

Nature Preserve Plan

Alpena Township

Alpena County



Prepared by: Nature Preserve Committee
July of 2008



ALPENA TOWNSHIP NATURE PRESERVE MANAGEMENT PLAN

Alpena Township, Alpena County, Michigan

Prepared by:

Alpena Township Nature Preserve Committee

Assisted by:

Northeast Michigan Council of Governments
121 East Mitchell Street
P. O. Box 457
Gaylord, Michigan 49735
www.nemcog.org

Michigan Natural Features Inventory
4th Floor Stevens T. Mason Building
530 W. Allegan St.
Lansing, MI 48933
<http://web4.msue.msu.edu/mnfi/>

Environmental Consulting and Technology, Inc.
2200 Commonwealth Blvd, Suite 300
Ann Arbor, Michigan 48105
<http://www.ectinc.com/>

The preparation of this plan was funded by:

This project was funded in part under the Coastal Zone Management Act of 1972, as amended, Office of Ocean and Coastal Resource Management, National Oceanic and Atmospheric Administration, U.S. Department of Commerce and the Michigan Coastal Management Program, Michigan Department of Environmental Quality. Additional funding support was provided by Alpena Township, Community Foundation for Northeast Michigan and Committee Members.

July 2008

ALPENA TOWNSHIP NATURE PRESERVE MANAGEMENT PLAN

Table of Contents

CHAPTER 1 - INTRODUCTION 1-1

CHAPTER 2 - EXISTING CONDITIONS 2-1

CHAPTER 3 - NATURAL FEATURES REPORT 3-1

CHAPTER 4 - GOALS AND OBJECTIVES 4-1

CHAPTER 5 - MANAGEMENT ZONES 5-1

CHAPTER 6 - RECOMMENDATIONS 6-1

APPENDIX A – TOWNSHIP BOARD MINUTES A-1

APPENDIX B – MNFI REPORTS B-1

LIST OF FIGURES

Figure 2.1 Sinkholes	2-2
Figure 2.2 Soils Map	2-3
Figure 2.3 Cover Type	2-5
Figure 2.4 Trails and Views Map	2-7
Figure 2.5 Area Land Use Map	2-8
Figure 3.1 Vegetation Map	3-5
Figure 5.1 Opportunities and Constraints Map	5-2
Figure 5.2 Management Zones Map	5-5
Figure 6.1 Overall Site Layout Map	6-6
Figure 6.2 Parking Lot Detail	6-7
Figure 6.3 Sinkhole Overlook Detail	6-8
Figure 6.4 Sinkhole Boardwalk Detail	6-9

LIST OF TABLES

Table 3.1: Rare Plant and Natural Communities	3-3
Table 3.2: Potential Rare and Plant Communities	3-4

Introduction

Background

Great Lakes coastal ecosystems are some of the most biologically rich landscapes in Michigan. In northeast Michigan, near shore land areas are post glacial lake plains, typified by water deposited sand and gravel overlaying limestone bedrock. Great Lakes marshes and bedrock shoals provide cover, feeding and spawning habitat for fish populations. Coastal ecosystems provide critical habitat for resident and migratory birds. Coastal zones are prime areas for a wide variety of outdoor recreation. Hunting, fishing, boating, paddle sports, birding and hiking are a few of the recreational activities pursued within coastal areas. Quality of the recreational experience is dependent upon the quality and condition of the natural resources. Healthy ecosystems are better places to hunt, fish and bird watch than degraded, exhausted environs.



Misery Bay was identified as an area of exceptionally high ecological values in the 1998 State of the Lakes Ecosystem Conference paper entitled Biodiversity Investment Areas, Near shore Terrestrial Ecosystems. The bay is one of only 20 such sites identified across the entire Great Lakes Region. One of the exceptional ecological features of Misery Bay is El Cajon Bay. The long narrow "boot shaped" bay contains a large sinkhole that is an outlet to an underground stream. Alpena Township purchased a 133 acre tract of land including 9,632 feet of Lake Huron shoreline along the south shore of El Cajon Bay. The property has karst geologic features, woodlands, conifer swamps, Great Lakes marsh and endangered plant species.



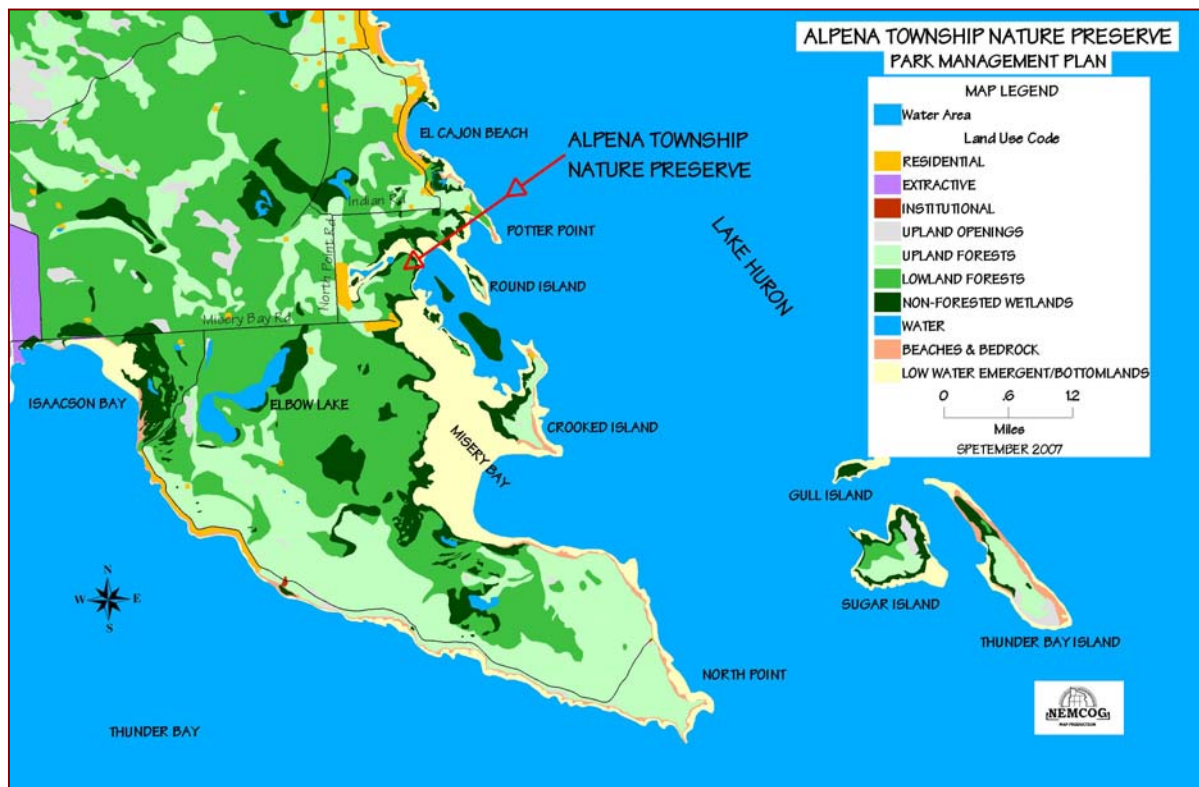
Alpena Township Nature Preserve

The Nature Conservancy played a key role facilitating the property acquisition, as well as providing some of the funding. A large part of the funding was provided by the Michigan Natural Resources Trust Fund and a Great Lakes Coastal Restoration Grant, provided through the Michigan Coastal Management Program, Michigan Department of Environmental Quality and the National Oceanic and Atmospheric Administration, U.S. Department of Commerce.

As part of the grant agreement Alpena Township was charged with providing long-term management that will protect conservation values of the property such as habitat for fish, wildlife, waterfowl and other birds, amphibians, insects and native plants. Secondly, the property must provide a place for passive recreation and access to Lake Huron for non-motorized watercraft such as canoes and kayaks. To fulfill these responsibilities, a community driven, science-based management plan needed to be completed, however, the Township did not have the staff and resources to complete such a plan on it's own. Additionally, key elements of the background studies, such as soils, plant and animal inventories, did not exist. Alpena Township sought the services of the Northeast Michigan Council of Governments (NEMCOG) to assist in securing grant funding and facilitate the development of a park management plan.

Location and Regional Setting

The Alpena Township Nature Preserve is located along the Lake Huron Coastline in eastern Alpena County. The property covers 133 acres including 9,632 feet of Lake Huron shoreline along the south shore of El Cajon Bay and is located in Section 15 of T.31N.-R.9E.



Alpena Township Nature Preserve

Plan Development

This project was funded in part under the Coastal Zone Management Act of 1972, as amended, Office of Ocean and Coastal Resource Management, National Oceanic and Atmospheric Administration, U.S. Department of Commerce and the Michigan Coastal Management Program, Michigan Department of Environmental Quality. In addition to matching money from its general fund, the Township received a supporting grant from the Community Foundation for Northeast Michigan.

The overall goal of the Alpena Township Nature Preserve Management Plan is to develop a resource friendly, management plan that will allow for recreational enjoyment, while protecting the natural resource integrity of the nature preserve. The effort documents existing conditions including soils, plant and wildlife communities, geology, water resources, views, recreation activities, existing trails and development. The Natural Resource Conservation Service completed a detailed soil survey on the un-mapped property. The Michigan Natural Features Inventory conducted rare plant and rare and/or high quality natural community surveys. This information was fed into the process with the end product being an opportunities and constraints map of the property.

To establish compatible uses and intensities of uses, the property was delineated into management zones. This approach used the State Parks and Recreation Division, Standard Management Zone Planning. *"Critical to the management planning process is the identification and delineation of "Management Zones". These are areas with defined characteristics and qualities, for which there are related user expectations, management guidance, and defined levels of development."* Management recommendations that address natural resources, recreation and education have been developed for each management zone. The plan includes sketches to more effectively convey the low-impact development concepts, and includes concept level design details. Preliminary cost estimates have been prepared for the development of the project areas. A licensed Landscape Architect from Environmental Consulting and Technology, Inc. was retained to assist in this task.

The completed draft plan was presented to and shared with the community during an open house. Community input helped refine the final plan. The plan was submitted to the Township Board for their approval.

Nature Preserve Committee

This plan was developed with the oversight of the Nature Preserve Committee. The committee served as an advisory group, meeting several times throughout plan development. The committee worked together to create a vision for the future of Nature Preserve. The following committee members participated in the planning effort: Kirk Kowalski, Don Beem, Elizabeth Littler, Marie Twite, John McConnell, Aubrey Golden and Norman Dutcher. Other interested parties attended meetings and participated in the process.

Existing Conditions

Water Resources

The 133-acre tract of land has over 9,600 feet of Lake Huron shoreline along Misery Bay and the south shore of El Cajon Bay. Shallow waters and a soft, unstable, gradually sloping lake bottom significantly limit opportunities for launching watercraft. Existing conditions warrant launching to hand carried canoes, kayaks and small boats. El Cajon Bay is very shallow and during periods of low lake level in Lake Huron, much of the bay consists of exposed bottomlands. Two small depressions, possible sinkholes remain wet during low water periods. The deep El Cajon sinkhole is an outlet of bedrock stream and provides a constant flow or discharge of water into the eastern section of the bay. The discharge water has extremely low oxygen content and high levels of chemicals such as sulfate and calcium that originate from the soluble bedrock aquifer.

"Flow in the bedrock aquifers of Northeast Michigan area is generally toward one of two different drainage routes. The most obvious of course is directly toward Lake Huron. The other is toward a cavernous system along a major fault line which in turn drains to Lake Huron. One can easily trace this system through a series of sinkholes and valleys from the Shoepac Lake area to Kelsey Lake and Sunken Lake to Misery Bay by Alpena. There are other faults and probably cavernous systems that branch off of the major system which also act as drains in their areas of influence. This influence is mostly limited to the ground water at the base of the drift deposits and may not have a significant effect on ground water flow closer to the surface." Ty Black

Geology

The property is located in a region influenced by limestone bedrock/karst geology. While no bedrock outcrops were noted on the property during field surveys, the bedrock is near the surface and influences drainage and vegetation. Limestone bedrock/karst geology

greatly influences the surface drainage in the region by impeding water percolation into the ground in some locations and by rapidly draining water through bedrock cracks at other sites. On the north side of the bay, bedrock cracks at the surface, called swallow holes, can drain large volumes of water into the limestone bedrock aquifers of cracks and porous stone. Water flowing through fractured bedrock will slowly dissolve the limestone, enlarging the network of cracks into subterranean channelways and caves. In some instances the rock above the cavern collapses forming sinkholes.

Karst geology features are prominent in and around El Cajon Bay. The bay itself may have been formed by the collapse of the bedrock foundation. Earth cracks are common around the bedrock north and west rim of the bay. A large sink hole in the bay is the outlet of an underground stream. Water discharge from the outlet empties into Lake Huron and, due to the constant flow and warmer temperature of water, the sinkhole never freezes over. When water levels in Lake Huron are high, the El Cajon sinkhole is submerged, but still visible on aerial photos. During low water levels like recent years, one can walk up to the edge of the sinkhole. The sinkhole discharge water has a different chemical composition than surface water of the bay and has a noticeable sulfur-like aroma. The photo below shows El Cajon Bay and the prominent sinkhole. Other sinkholes are located in Misery Bay and north in the Rock Port area.



Figure 2.1: Sinkholes

Soils

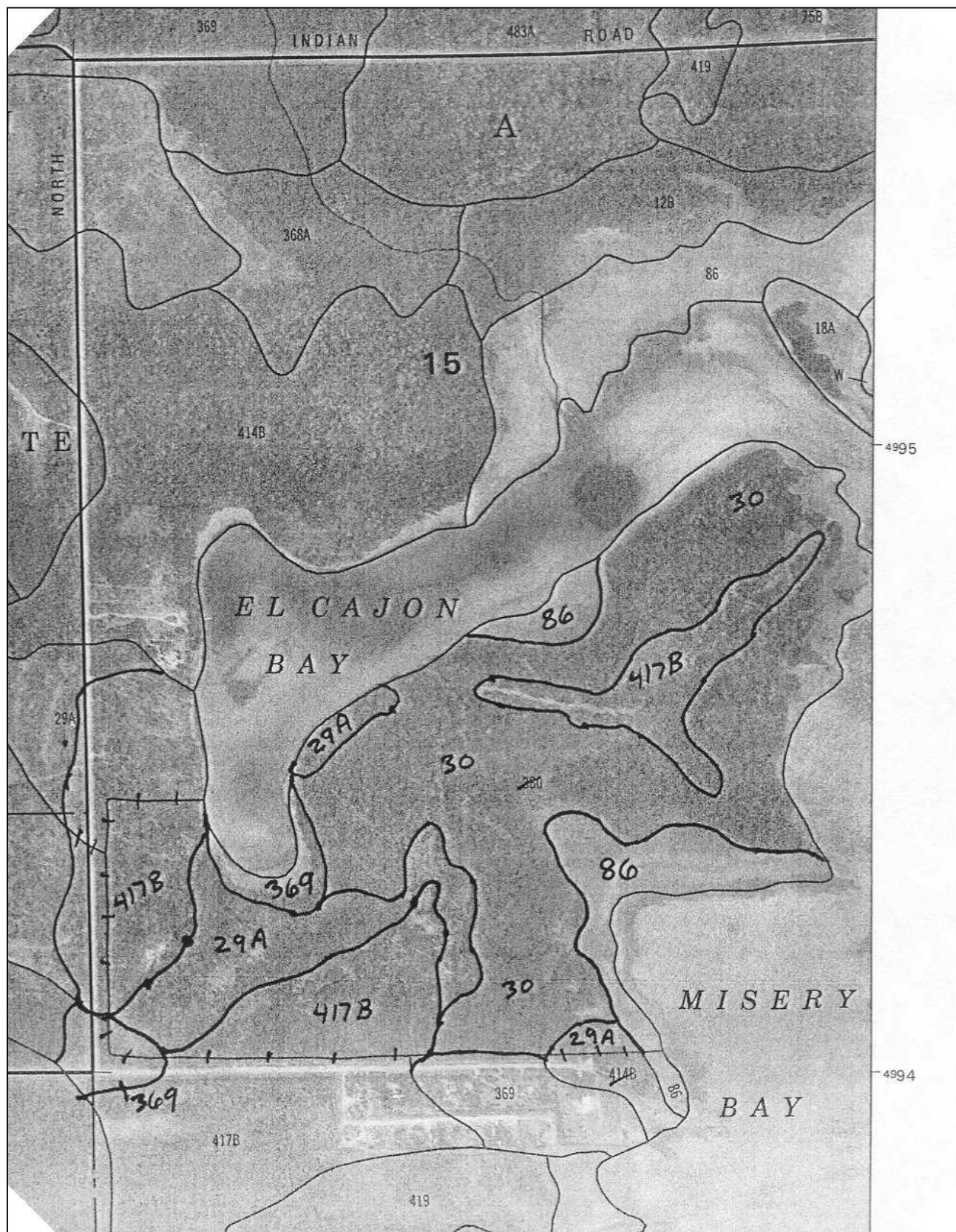
The Natural Resource Conservation Service (NRCS) completed a detailed soil survey in the fall of 2006. Figure 2.2 is a soil map of the property. According to the NRCS, Alpena gravelly sandy loam soils (417B) with 0 to 6 percent slope have good potential for recreational use. The soils are moderately well drained with a water table at 3 to 6 feet below the surface. The central access trail is primarily located on these soils. Battlefield sand (29A), 0-3 percent slope have good potential for recreational uses.

Most of the area is mapped as Wheatly muck (30), which has mucky gravelly sandy loam surface. These soils are classified as hydric and have limited potential for recreational uses such as trail development and picnic areas. The remaining soils are classified as hydric with a high water table and very limited potential for recreational development.

Listing of primary soil types, see following page for a copy of the soil map.

Map Unit

- 29A – Battlefield Sand, 0 to 3 percent slopes. somewhat poorly drained
- 30 – Wheatly Muck, hydric soils, seasonally high water table
- 86 – Histosols and Aquents, ponded, hydric soils, seasonally high water table
- 39 – Deford Muck, hydric soils, seasonally high water table
- 369 – , hydric soils, seasonally high water table
- 417B – Alpena Gravelly Sandy Loam, 0 to 6 percent. excessively drained



Alpena Township Nature Preserve

Cover Type Map

Area 1: Mixed trembling aspen, red maple, white birch, and balsam fir forest. Red oak, black ash, northern white cedar, white pine, red pine and white spruce also present. Aspen, white birch and balsam fir are mature, declining and dieing. In areas where larger overstory of trees are dieing, balsam fir regeneration is very thick. The forest is in transition from the dominant aspen and white birch to younger balsam fir and red maple forest. If no major disturbance occurs, aspen and white birch will become a minor species. Larger white pine trees can be found in the forest bordering El Cajon Bay.

Area 2: Mature northern white cedar forest with old growth trees over 100 years old. Soils are mostly organic and have a high water table. Dwarf lake iris is prolific in the eastern and northeastern parts of the property.

Northern White Cedar



Aspen-Fir

Area 3: Openings. There are several openings created by the pervious landowner. Dominant ground covers are grasses and bracken fern. Well-drained soils at some sites would allow for recreational uses such as vehicle parking, camping and picnic areas.

- A. Long narrow opening, potential for staging area/parking. There are a few small piles of construction debris and household appliances.
- B. Large opening located in the central part of the property. Several trail intersect in this long narrow opening. Opportunity for parking, picnic, and possibly primitive camping.

Alpena Township Nature Preserve

- C. Small opening adjacent to El Cajon Bay. Large white pine and northern white cedar trees, excellent view of the foot of El Cajon Bay. Opportunity for picnic area and benches.
- D. Small opening adjacent to El Cajon Bay. Large white pine trees, large boulders, offers an excellent view of central El Cajon Bay. Opportunity for picnic area and viewing benches. Provides access to shoreline of the bay.
- E. Opening at the tip of the point. Staging area for access to sinkhole and Misery Bay. Opportunity for parking, picnic area, and paddle sport access to the bays.



Openings

Area 4: Fens and marshes. High quality fens and narrow marshes are key natural features of the property. These areas provide habitat for rare plants and are very fragile. Foot traffic would have negative impacts to these sites.



Coastal Fen



Coastal Marsh

Area 5: Shoreline/beaches and exposed bottomlands (5A). Due to the fluctuating lake levels the width of these shoreline/beach areas and the depth to

water table is highly variable from year to year. Rocks and small boulders are common in the shoreline/beaches near the tree line. Exposed bottomlands are dominated by soft calcareous soils that are easily damaged by vehicle usage and intensive foot traffic. There is lingering evidence of ATV and truck traffic, particularly from the point to the El Cajon Bay sinkhole, can be found.

Area 6: El Cajon Bay and Sinkholes (6A). The depth of water and surface water area of the bay is closely related to the fluctuating levels of Lake Huron. During periods of low lake levels, much of the bay is exposed bottom lands. The sinkholes and flowing springs are a central feature of the shallow bay.



Shoreline



El Cajon Sinkhole Shoreline

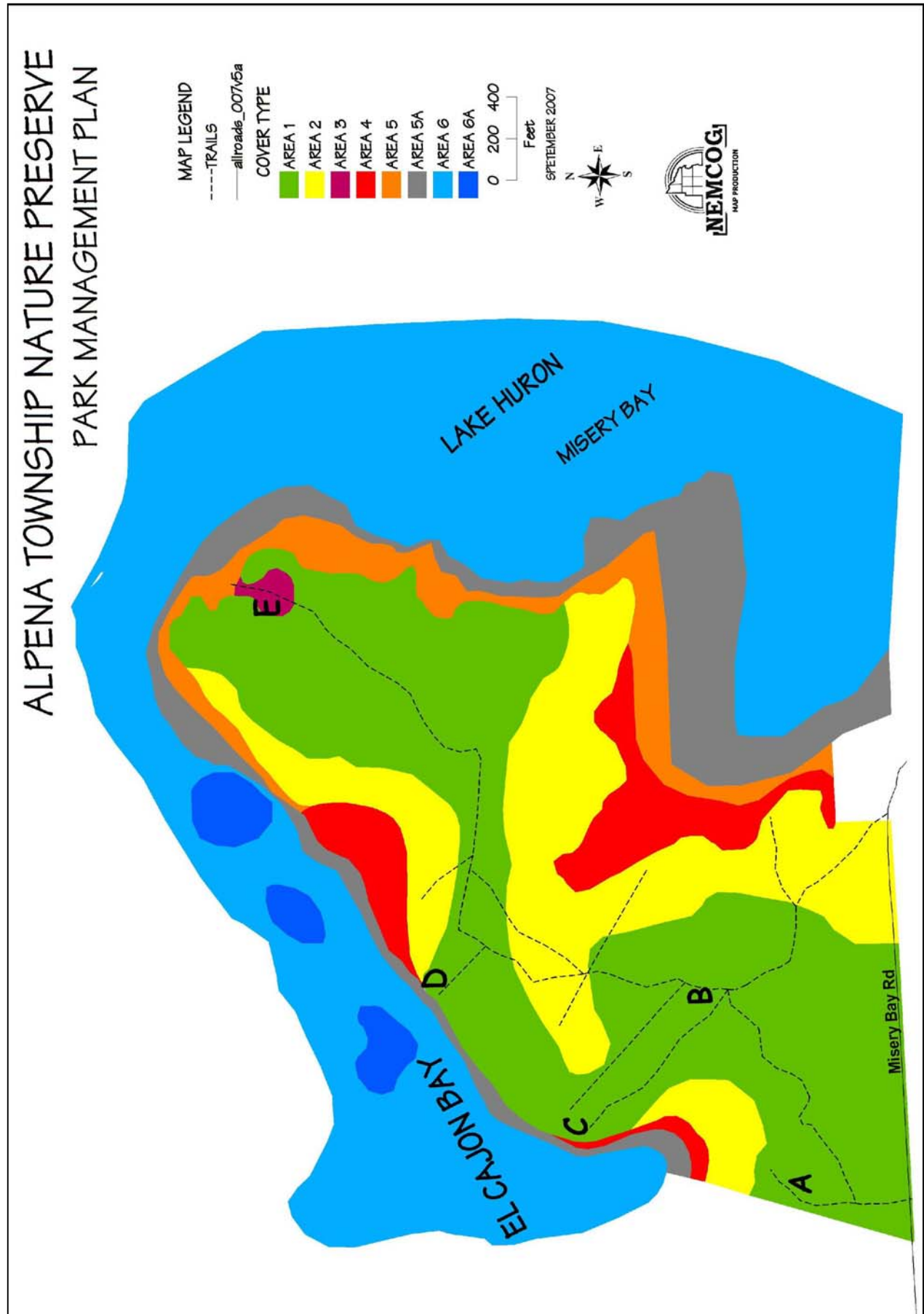


Figure 2.3: Cover Type Map

Trails and Openings

There is a network of trails on the property that was created by the previous landowner, see

Figure 2.4. The central trail enters the property on the southwest corner off Misery Bay Road meandering in a northeasterly direction with its terminus on the point at the outfall of El Cajon Bay. The central trail is located primarily on well-drained soils, and should accommodate traffic during dry periods. A second entrance into the property is located at the southeast corner. The first 600 feet runs through a cedar forest.

A high water table and the presence of Dwarf Lake Iris diminish the potential for making this trail a viable route for heavy recreational use. There are numerous side trails, cleared to access lots that had been subdivided prior to the Township acquiring the property. Three of these trails have potential for use by hikers. They provide access to El Cajon Bay and have small clearings at their terminus. These openings are labeled as C, D & E. Another side trail provides access to the Misery Bay Fen. The trail bed is wet in locations and covered with dwarf lake iris.



Views

The property offers the only mainland view of the Thunder Bay Island group from publicly owned land. There are several locations on the Nature Preserve that provide viewing sites of El Cajon Bay and Misery Bay (see **Figure 2.4**). Existing trails provide access to these sites. Signage, benches and minor improvements would enhance viewing sites.

Surrounding Land Use and Development

Land on the north side of El Cajon Bay is owned by the State of Michigan and is in a natural forested condition. The Forest Management Division is pursuing designation of old growth forest. The parcel east of the state land, including Potters Point, is under single ownership and has a one cabin. The west end of El Cajon Bay is subdivided into parcels approximately three acres in size. On the south side of Misery Bay Road, the land is privately owned and is a platted subdivision with lots approximately 100' x 150' in size. With the exception of the homes and cottages, the surrounding landscape is a mix of forest types, similar to the Nature Preserve. Lowland conifer forests with northern white cedar, balsam fir, black spruce and white spruce; lowland hardwoods with balsam poplar, trembling aspen, black ash, red maple, and balsam fir; upland forests with aspen, red maple, white birch, balsam fir, white pine and red oak are the typical forest types found in the area.

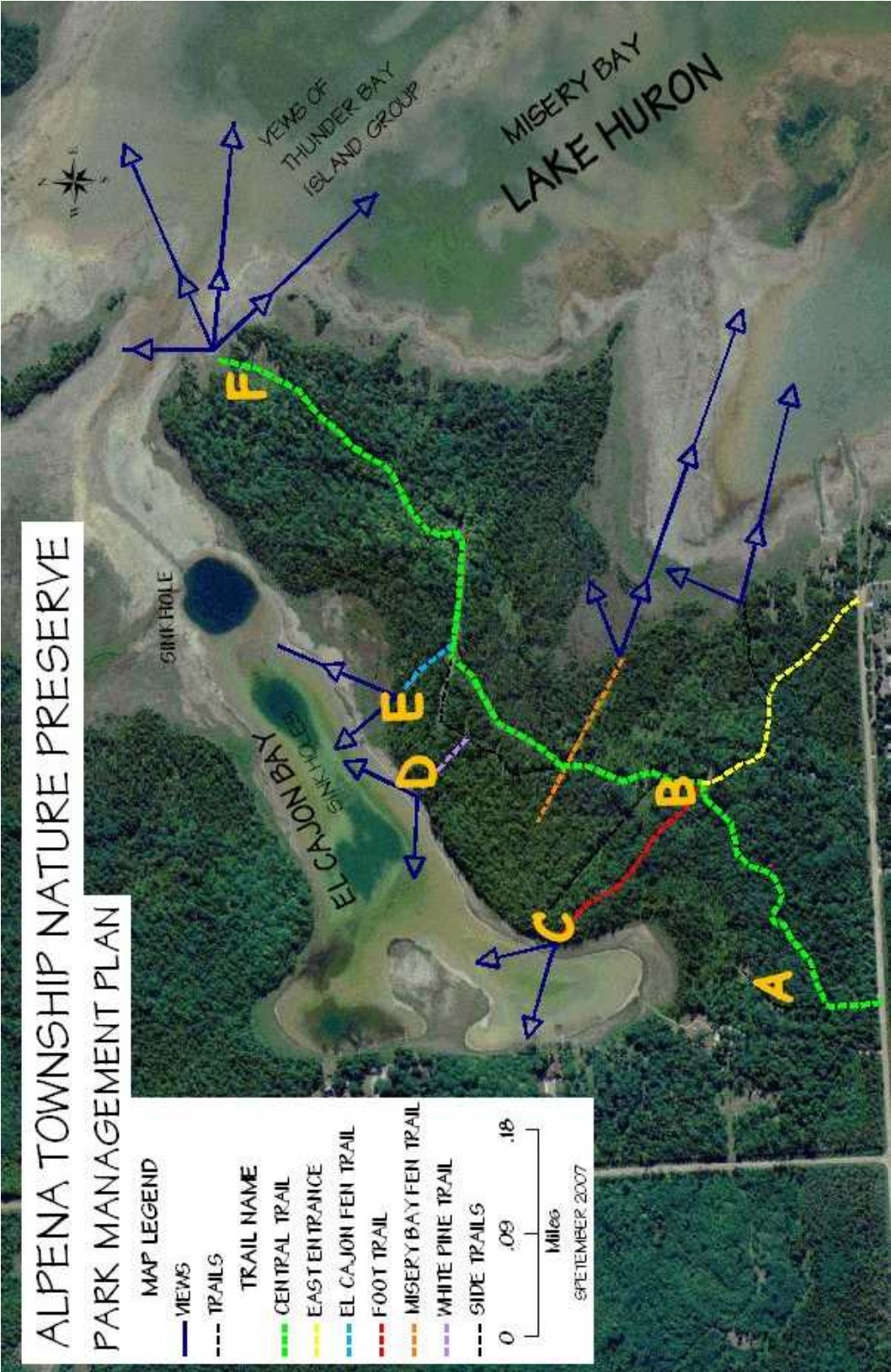


Figure 2.4: Trails and Views

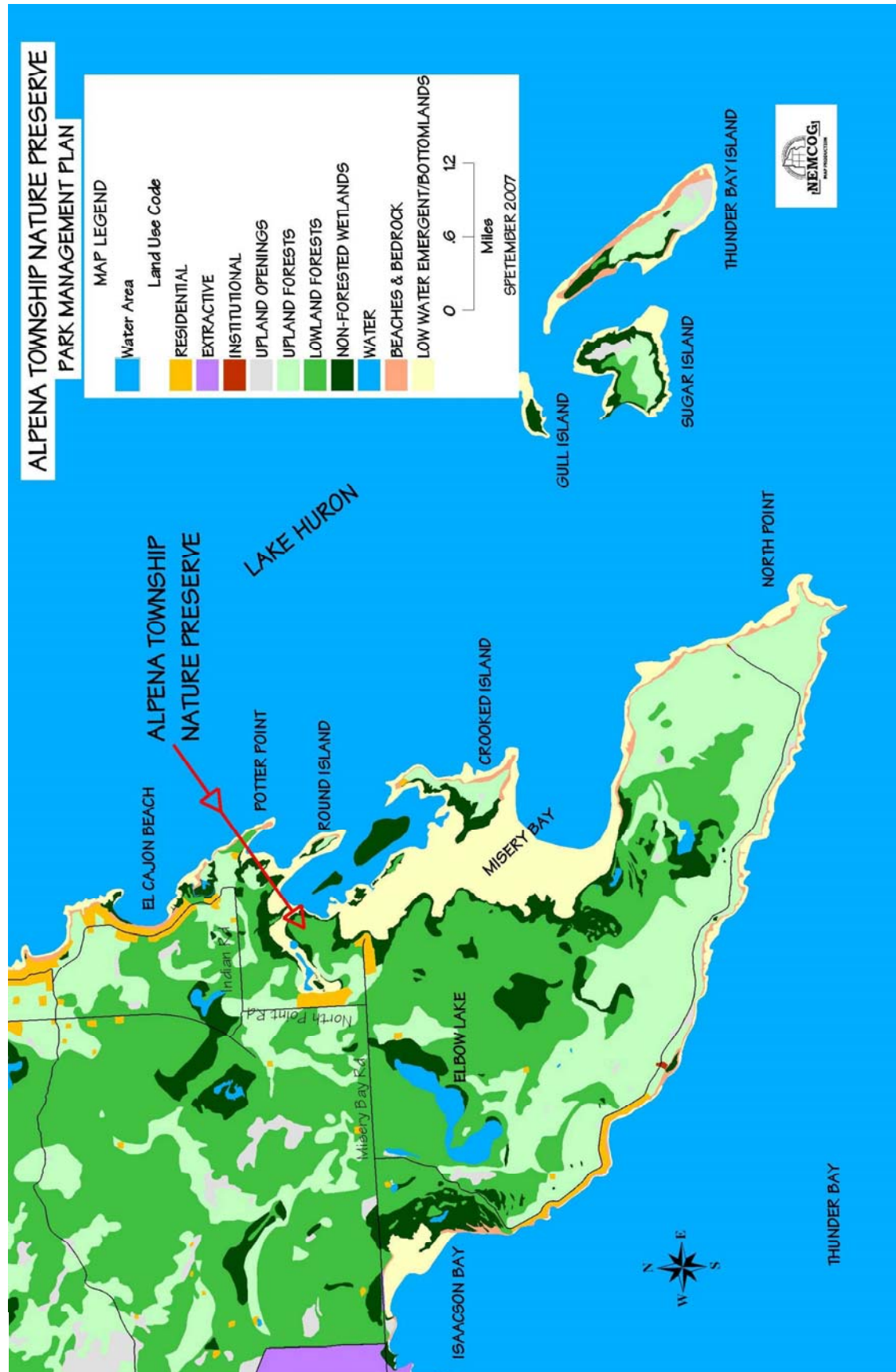
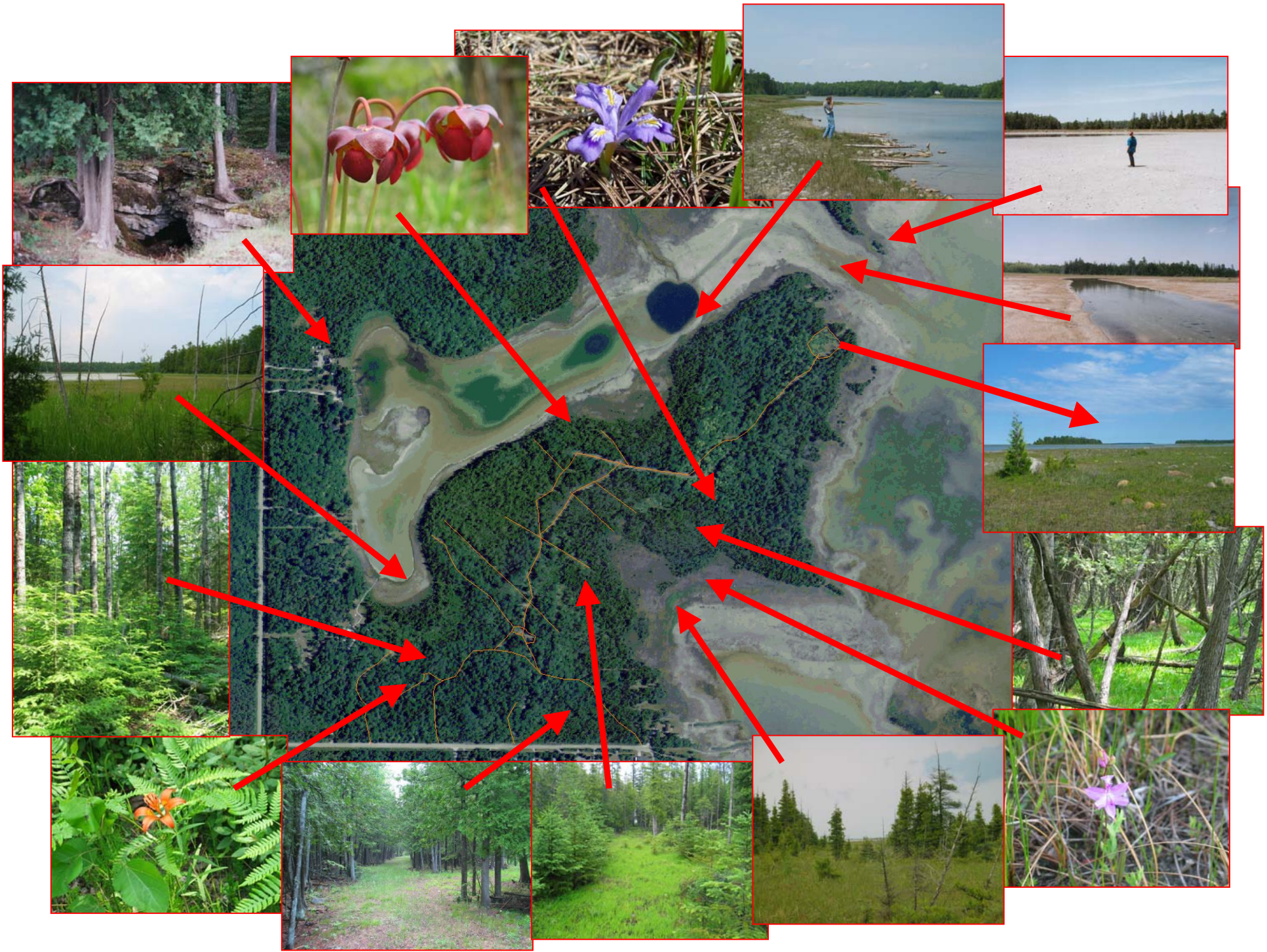


Figure 2.5: Land Use



Natural Features Report

Introduction

The primary objective of this project was to assist Alpena Township with the development of a science based management plan for a recently acquired 133 acre tract located along the southern shoreline of El Cajon Bay. The primary role of the Michigan Natural Features Inventory was to conduct surveys for rare plants and high quality natural communities, summarize the results, and provide recommendations for future management and protection strategies within the site boundaries.

Methods

Michigan Natural Features Inventory conducted rare plant and rare and/or high quality natural community surveys within the boundaries of the 133 acres park in Alpena Township from August 1-3, 2007. These surveys were completed by staff botanist M. Penskar. Prior to conducting the field inventory, the statewide natural heritage database was reviewed for previously identified element occurrences of rare species and high quality natural communities within and near the park. In addition to examining the comprehensive database, the MNFI Web-based Species Explorer was queried to develop a list of potential rare species to seek based on the natural communities known to occur in or near the park.

The park and local environs were examined via 1998 color infrared (CIR) aerial photos, USGS topographic maps, and also digital orthophotos displaying the MNFI data layers for known element occurrences. Botanical and natural community surveys were subsequently scheduled based on the results and the necessity of optimizing field work owing to the limited time and resources available for field studies. Due to the limited amount of field work, this study was not intended to be a comprehensive survey of plant species.

Other MNFI staff members were consulted for recommendations regarding particular natural features and specific survey sites familiar to them within the area. In addition, a meeting was held with Rick Deuell of NEMCOG immediately prior to field inventories. This resulted in the acquisition of additional aerial imagery and other information, including Mr. Deuell's personal knowledge of the site, which assisted significantly in directing the field efforts.

Field surveys were conducted primarily through meander searches within targeted habitats based on their potential to harbor rare plant species and comprise high quality natural communities. Initially, a traverse of the principal trails throughout the site was performed as a general reconnaissance and to confirm the presence of delineated community types. For the remainder of the study, meander searches were conducted throughout representative portions of the natural communities present, and when encountered, high quality communities were more systematically and intensively searched to document their quality and seek potential rare plant colonies.

A comprehensive vascular plant list was compiled for the park, recording plant species by natural community type, and photo documentation was obtained as needed throughout the survey area.

Alpena Township Nature Preserve

Where identified, data for rare plant populations or high quality natural community occurrences were recorded on the appropriate MNFI field forms. GPS equipment was used as necessary to record specific rare plant locations for subsequent mapping in the MNFI database. Additional field notes were recorded on local disturbance features (natural and artificial) and the presence of exotic plant species.

Following field surveys, rare plant and natural community data were reviewed, summarized and queued for processing into the MNFI statewide database. As part of the transcription and entry process, the occurrences will include mapped boundaries and a ranking indicating their relative quality and viability. Both rare plant and natural community occurrences will be given a rank (A-D) based on relative quality, condition, and landscape context. Plant lists, including a master plant list for the park, were entered and prepared via the Michigan Floristic Quality Assessment System (FQAS) (Herman et al. 2001). Digital photos were downloaded, examined, and annotated by community type and/or location for inclusion with the MNFI report.

General Site Description

The site is located in Alpena Township, Alpena County. The park is bordered by El Cajon Bay to the north, Lake Huron to the east, and Misery Bay Road to the south. The western boundary is a narrow strip in between El Cajon Bay and Misery Bay Road bordered by private land. Within the state ecoregional framework, the park is located in the southern portion of the Cheboygan sub-subsection (Albert 1995). The sub-subsection forms a narrow band of sandy lake plain along Lake Huron. Limestone bedrock is near the surface of almost the entire sub-subsection and exposed bedrock and cobble beach are common. Karst depressions are common in the southern part of the sub-subsection.

The interior of the park is comprised primarily of dry mesic forest, rich conifer swamp, and boreal forest with a few scattered openings and depressions. The shoreline consists of broad to narrow bands of coastal fen (some of these forming significant embayments) and cobble beach bordered by a mosaic of rich conifer swamp and boreal forest. A small pocket of limestone bedrock glade, a rare shoreline community imperiled in Michigan, was found in the southeast corner of the property.

Results

Field surveys resulted in the documentation of a new occurrence of the globally imperiled (G2) coastal fen (known formerly as northern fen) a new occurrence of the state special concern Indian plantain (*Cacalia plantaginea*), and an update of a well known occurrence of federal threatened and globally rare (G3) dwarf lake iris (*Iris lacustris*) (**Table 3.1**). A total of 149 plant species were recorded, composed of 128 native species and 21 non-native taxa, and



Alpena Township Nature Preserve



resulting in an overall Floristic Quality Index (FQI) of between 50 and 60 (55.4 with adventives included, 59.8 without adventives), indicating a high degree of natural area quality based on floristic composition (Herman et al. 2001). Of the relatively few exotic species identified, the most potentially problematic was the presence of individuals of glossy-leaved buckthorn (*Rhamnus frangula*) and autumn olive (*Elaeagnus umbellata*).

Table 3.1: Rare plant and natural community occurrences identified during Alpena Township Park surveys, with annotations of global and state element ranks.

Scientific Name	Common Name	Global Rank	State Rank	Federal Status	State Status
<i>Iris lacustris</i>	Dwarf lake iris	G3	S3	LT	T
<i>Cacalia plantaginea</i>	Indian plantain	G5	S3		SC
	Coastal fen	G2	S2		

Summary of Ecological Significance

The most significant features within the park are located along or near the Lake Huron shoreline. The coastal fen essentially extends the entire length of the shoreline, and contains the highest number of plant species in the park. Coastal fen is considered to be very rare throughout its range both globally and in Michigan. The portion of coastal fen located in the southernmost bay contains a population of Indian plantain (*Cacalia plantaginea*). Dwarf Lake Iris (*Iris lacustris*), federally listed as threatened, is common throughout the site, and locally abundant along the majority of shoreline, particularly in areas dominated by northern white cedar (*Thuja occidentalis*). Some of the more open areas in the coastal forests form a dense carpet of dwarf lake iris. A small pocket of limestone bedrock glade was found in the southeast corner of the property adjacent to coastal fen. Limestone bedrock glade is a very rare natural community in Michigan that is very sensitive to human disturbance. This community type is only found along the northern Lake Huron and Lake Michigan shorelines. Although this occurrence is probably too small to incorporate into the MNFI database, it is still a significant natural feature within the park.



In addition, shallow protected bays, particularly those bays adjacent to conifer forests along northern Lake Huron, can provide critical food sources for migratory songbirds in the form of aquatic midges. Midge adults emerge in early spring when bird migration is at its peak. With very few forage alternatives during that time period, migratory songbirds tend to concentrate along

Alpena Township Nature Preserve

these shoreline areas and forage on adult midges found in the coastal conifer forests, particularly northern white cedar trees (Smith, et al. 1998).

Lastly, it is important to note that this study was not intended to be a comprehensive rare plant and animal survey. As a result, there is potential for several rare plant and animal species to occur within the park that were not located during the botanical and natural community surveys (**Table 3.2**).

Table 3.2: Rare plants and animals that could potentially occur in Alpena Township Park

Scientific Name	Common Name	Global Rank	State Rank	Federal Status	State Status
<i>Adlumia fungosa</i>	climbing fumitory	G4	S3		SC
<i>Amerorchis rotundifolia</i>	round-leaved orchid	G5	S1		T
<i>Calypso bulbosa</i>	calypso	G5	S2		T
<i>Carex scirpoidea</i>	bulrush sedge	G5	S2		T
<i>Cypripedium arietinum</i>	ram's head orchid	G3	S3		SC
<i>Drosera anglica</i>	English sundew	G5	S3		SC
<i>Gymnocarpium robertianum</i>	limestone oak fern	G5	S2		T
<i>Mimulus michiganensis</i>	Michigan monkey-flower	G5T1	S1	LE	E
<i>Pinguicula vulgaris</i>	butterwort	G5	S3		SC
<i>Pterospora andromedea</i>	pinedrops	G5	S2		T
<i>Sistrurus catenatus</i>	eastern massasauga	G3G4	S3S4	C	SC
<i>Solidago houghtonii</i>	Houghton's goldenrod	G3	S3	LT	T
<i>Somatochlora hineana</i>	Hine's emerald dragonfly	G2G3	S1	LE	E
<i>Somatochlora incurvata</i>	incurvate emerald	G4	S1S2		SC

Evidence of Artificial Disturbance



trails have been cut through rich conifer swamp. Walking trails and cleared lines are found throughout the site and

All forested communities within the park boundary appear to have been logged at least once within the past 200 years.

Majority of trees on site are relatively small in diameter, and cut tree stumps are scattered throughout the forest patches. White cedar stumps are prevalent in areas where several



Alpena Township Nature Preserve

could act as pathways for the introduction and spread of exotic species from peripheral areas into the core of the site. Both glossy-leaved buckthorn and autumn olive were found in the park, and both could become a problem in the future without active management. Several common exotic plant species occur along forest edges, trails, and other openings, the most invasive consisting of such species as spotted knapweed (*Centaurea maculosa*), St. John's-wort (*Hypericum perforatum*), and white sweet clover (*Melilotus alba*), with common but generally less problematical species as wild carrot (*Daucus carota*), blue-grass (*Poa compressa*), and redtop (*Agrostis gigantea*).

Beyond the creation of roads and trails, additional artificial disturbance features include a few areas where construction materials have been deposited in the western region of the park, largely north to northeast of the gated entrance, and evidence of occasional off-road-vehicle (ORV) use along the shoreline. A few ORV tracks were observed during surveys along the south shore of El Cajon Bay, although this use appears to be fairly limited.

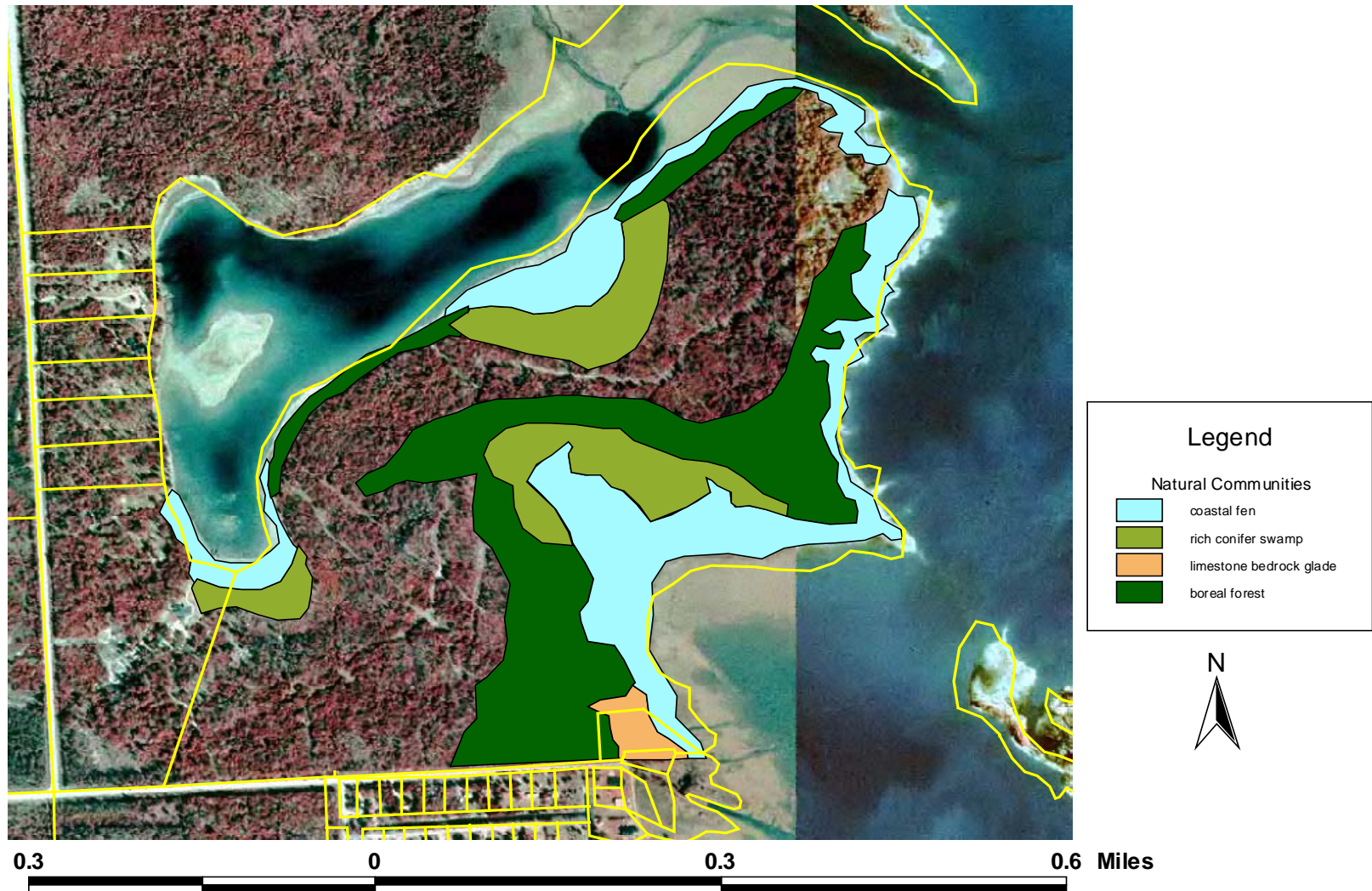
Management Recommendations

As mentioned above, the most significant features within the park are located along or near the Lake Huron shoreline: coastal fen, boreal forest, and rich conifer swamp. We strongly recommend that all shoreline communities, particularly the coastal fen and adjacent boreal and rich conifer forests are maintained as intact mosaics of natural communities. As a result, use of vehicles on beaches and bottomlands should be strictly prohibited. Another suggestion regarding vehicles, is to limit vehicular access beyond the proposed parking area just off the road. If it was decided that vehicles should go beyond the parking area, we suggest that vehicles should not be allowed past the point where the rich conifer swamp crosses the main pathway. Foot and bike traffic should primarily be limited to the existing trail that traverses the center of the park to minimize trampling of the fragile coastal fen environment. This could be accomplished by only maintaining the main trail, and allowing the other linear cut areas to revegetate through natural succession. Lastly, glossy-leaved buckthorn and autumn olive should be removed as quickly as possible, by cutting and herbiciding, before they become a bigger problem.

Literature Citations

- Albert, D. A. 1995. regional landscape ecosystems of Michigan, Minnesota, and Wisconsin; a working map and classification. Gen. Tech. Rep. NC-178. St Paul, MN: U.S. Department of Agriculture, Forest Service, North Central Forest Experiment Station. 250 p.
- Herman, K. D., L. A. Masters, M. R. Penskar, A. A. Reznichuk, G. S. Wilhelm, W. W. Brodovich, and K. P. Gardiner. 2001. Floristic Quality Assessment with Wetland Categories and Examples of Computer Applications for the State of Michigan – Revised, 2nd Edition. Michigan Department of Natural Resources, Wildlife, Natural Heritage Program. Lansing, MI. 19 pp. + Appendices.
- Smith, R. M., Hamas, M., Dallman, D., Ewert. 1998. Spatial variation in Foraging of the Black-Throated Green Warbler along the Shoreline of Northern Lake Huron. The Condor, Vol. 100, No. 3. pp. 478-484.

Alpena Township Park Vegetation Map



Goals and Objectives

Nature Preserve Goals and Objectives

Provide an opportunity for residents, tourists and future generations to experience the natural environment of coastal communities – plants and wildlife.

- Provide birding a site for people.
- Provide views to the Thunder Bay Island Group.
- Provide access to the many ecological communities and rare biological species.
- Provide a place for schools and individuals to study natural ecosystems, flora and fauna.
- Develop a nature study brochure and signage to feature the natural communities and flora.

Coordinate with existing activities to make the Nature Preserve part of a regional tourism package.

- The Preserve can be an attraction for tourism, and part of an eco-tourism/historic/outdoor recreation package that will draw people to the area.
- Work with organizations and efforts such as the Alpena Tourism and Convention Bureau, US-23 Heritage Route, Michigan State Parks, Huron Greenways, NOAA Maritime Heritage Center, Sunrise Side Tourism.

Protect natural communities, and rare flora and fauna.

- The property is home to a number of rare species and functions as an important migratory bird stop-over (neo-tropical birds, shorebirds and waterfowl). Public use should be allowed within reason with an emphasis on protecting the sensitive areas.
- To maintain ecosystem integrity, invasive species should be monitored and managed. Invasive species can become an issue during construction projects. Disturbed sites create a receptive seed bed; equipment and fill such as road gravel and top soil bring in the seed source. The monitoring program should be stepped up after any construction project.
- Periodically evaluate the threat of wildfires and develop a policy to address fighting wildfires.

Provide for a variety of outdoor recreational activities while protecting the fragile environment of the property.

- Provide access to Misery Bay for canoes and kayaks.
- Provide controlled access to sinkholes for diving and observation.
- Provide an area for the public to hunt.
- Provide off road parking.
- Provide a marked/signed trail system for people to hike the property and not get lost.
- Develop a brochure of the property that shows trail system, cover type, plant communities, sinkhole, parking, park rules, picnic areas, etc.
- Provide nature education for schools and individuals by placing signs, and developing a brochure.
- Establish a means to provide surveillance and policing of the park.
- Monitor and regulate usage so overuse and abuse of the land do not negatively impact the fragile communities on the property.
- The Township needs to be flexible with options and adjust management activities to address needs and concerns.

Alpena Township Nature Preserve

- Make sure management activities and recreational development on the property is covered by liability insurance.
- Ban the use of snowmobiles and ATV's on the property, including but not limited to along the shore and on the exposed bottomlands.
- Ban the use of motor vehicles along the shoreline and on the exposed bottomlands, particularly driving to the sinkholes.

Support the long term management of the park

- Establish a mechanism to provide long term funding for management and maintenance.
- Explore the possibility of setting up some endowment that can accept private funds and public funds earmarked for the preserve.
- Establish a mechanism for enforcing park rules.

Management Zones

Opportunities and Constraints

Based on information provided in previous chapters (soils, natural features surveys, existing vegetation, existing development) and committee discussions an opportunity and constraints map has been developed. This map will help guide the establishment of management zones and identification of potential projects. The property offers access to coastal resources, both terrestrial and aquatic. Opportunities include an existing trail system, access to El Cajon Bay sinkholes for diving and access to Misery Bay for kayaking and canoeing. Existing small openings with additional site development can be used for parking and picnic areas. Clearly the greatest opportunity is to provide a quiet natural place for hiking and exploration of intact coastal ecosystems that abound with natural beauty. The property also provides opportunities to view rare plants and animals. Constraints include extensive wetlands, high water table, mucky soils, rare plant communities, and extremely fragile coastal fens and shorelines. Due to the fragile nature of the property, snowmobile and ORV use would have detrimental impacts and should not be allowed on the preserve. Vehicle use should be restricted to existing trails and directed to parking areas. The challenge will be installing barriers to stop vehicles from driving to the point and onto beaches. Another major constraint is an organizational constraint; the Township does not have staff to oversee day-to-day operations and policing of the preserve. Vehicle access onto the preserve will have to be carefully monitored and management options may have to be altered depending upon how users treat the property. **Figure 5.1** is an opportunity and constraints map of the property.

Overall Approach to Property Management

The Nature Conservancy, Michigan Natural Resources Trust Fund and a Great Lakes Coastal Restoration Grant all contributed to making the purchase possible. As part of the grant agreement Alpena Township was charged with providing long-term management that will protect conservation values of the property such as habitat for fish, wildlife, waterfowl and other birds, amphibians, insects and native plants. Secondly, the property is to provide a place for passive recreation and access to Lake Huron for non-motorized watercraft such as canoes and kayaks. Access to coastal resources can be interpreted as both physical and visual access. Access does not mean complete access to everyone, for all possible uses, on every square foot of the property.

The primary purpose of the property is to provide low to moderate levels of natural resource related recreation (passive recreation) while protecting the native plant communities, rare plants and rare animals. Hunting/trapping and fishing are compatible uses. Timber harvest or vegetative management should be restricted to controlling invasive species and re-establish native systems. Exotic species will need to be monitored and removed. Snowmobiles and ORV's are NOT compatible with the overall purpose of the property and are not allowed anywhere on the property.

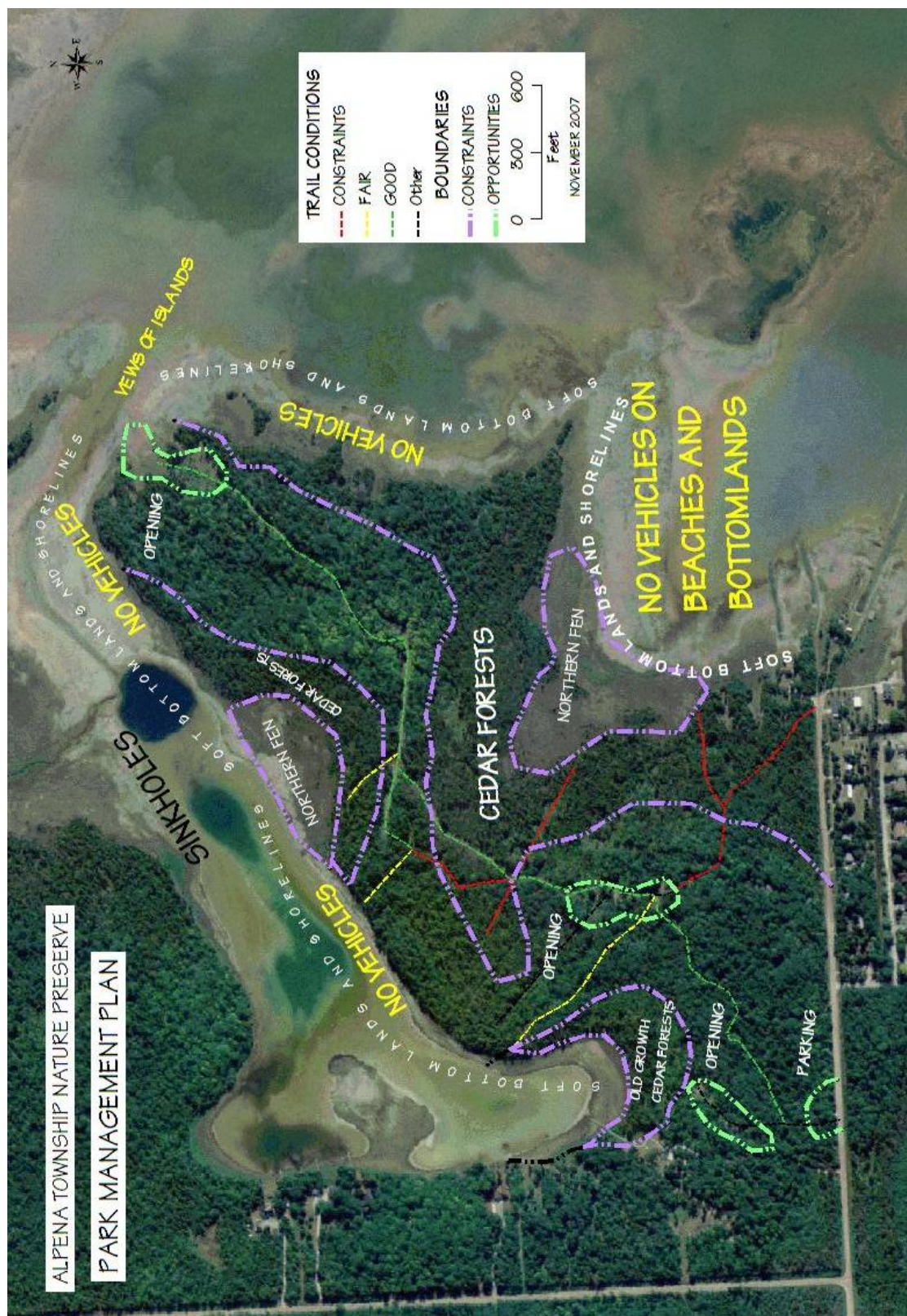


Figure 5.1: Opportunities and Constraints Map

Management Zones

An important step in the management planning process is the identification and delineation of Management Zones. The Nature Preserve Committee used an approach similar to the Michigan State Parks and National Park Service. Information provided in the background studies guided the committee's decision to designate three management zones on the property. Management zones are areas with defined characteristics and qualities for which there are related user expectations, management guidance and defined levels of development. **Figure 5.2** is a graphic from the Michigan Department of Natural Resources State Parks management zone planning approach.



Ecologically Sensitive Zone

The purpose of the ecologically sensitive zone is enhancement and protection of the native community and natural process over and above any other uses (including recreational) that might be contemplated. This zone restricts public use and development. The Ecologically Sensitive Zone is used when critical habitat must be protected, such as a coastal fen or where federally protected species are found, such as the Dwarf Lake Iris, the Lake Huron tansy or the piping plover. Native species and natural processes dominate and the overall character is pristine. Pre-European ecosystem components and processes should be maintained, restored and protected. Recreational activities such as hiking trails, picnic areas and observation points should be limited within these zones and in the case of the coastal fens restricted. One exception might be x-country skiing. Hunting/trapping/fishing and other low-impact dispersed recreational use can occur, however these usages should be monitored. Educational opportunities would typically be off-site for general public, with allowance for highly controlled access where appropriate and feasible for researchers/scientists. The zones would support ecological research and monitoring. Due to the sensitivity of sites, visitor use should be directed away from these zones. There will be no interpretation signage on-site; off-site interpretation will focus on the resource. The management focus should be protection for the resource. There should be no development except as needed for resource protection. There will be little evidence of human activity.

Scenic Zone

The Scenic Zone recognizes that there are aesthetic qualities to be preserved and protected. The Scenic Zones offer views of El Cajon Bay, Misery Bay and the Thunder Bay Island Group. The observation points are located along the shoreline and in existing open areas. Select removal of trees and shrubs to improve views would be acceptable. To keep the Native greenbelts intact, filtered views through shrubs and trees are preferred. This zone is only accessible by foot traffic

Alpena Township Nature Preserve

and other non-motorized activity. Low level of development to support visitor access, interpretive activities and sightseeing such as trails, small picnic areas and interpretive media would be acceptable. Interpretive signage could be placed at key viewing points, as well as benches, picnic tables and viewing platforms. All activities or developments in this zone must be compatible with the over-riding purpose of view quality. Development should blend with the natural environment. Site hardening such as boardwalks, barriers and fencing would be allowed to protect sensitive resources.

Natural Resource Recreation Zone

The character of the Natural Resource Recreation Zone is natural with minimal evidence of human impact while allowing for low to moderate levels of recreation use, and modifications of the landscape (i.e., trail development) to accommodate that use. There is still an emphasis on resource quality over recreation. This zone allows for increased use, including bicycle and equestrian, and modifications of the landscape (i.e., trail development) to accommodate that use. Exotic species should be removed. Protection of water quality should be a priority. Timber harvest and vegetative management, including controlled burns, can occur on a limited, short-term basis for habitat improvement. Moderate levels of recreation compatible with natural character of the zone are acceptable. Non-motorized outdoor activities are allowed and would include the following: hiking, backpacking, bicycling, canoeing, diving, kayaking, nature observation, cross-country skiing, snowshoeing, and hunting/trapping/fishing). Interpretive signage would be allowed at trailheads, on the trail and at overlooks. Low level of development is acceptable to support visitor access to outdoor activities: trails, trailhead parking, marked routes, and educational opportunities. Development would be unobtrusive and would blend with natural environment. Site hardening (i.e., boardwalks, fencing, pedestrian paths) may be necessary to protect sensitive resources. Clearly the overriding approach to this zone is to maintain its low-impact character, with an emphasis on natural resource quality.

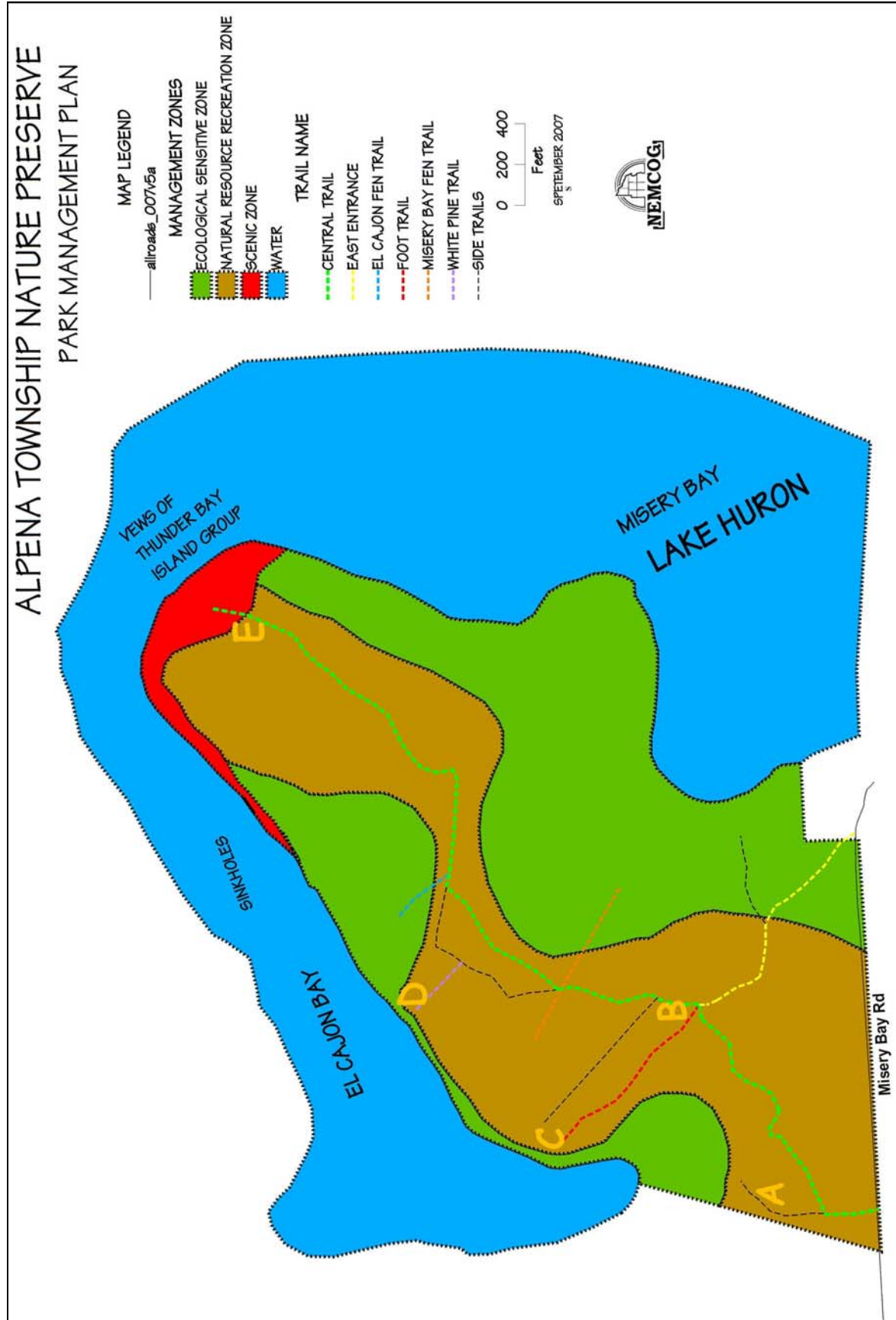


Figure 5.2: Management Zones Map

Management Recommendations

Recommendations

The underlying purpose of the Nature Preserve is to provide access to coastal resources while preserving those resources for future generations. These resources include both nearshore and terrestrial environs. The intent is to provide reasonable access while protecting the fragile nature of the property, which sometimes can be a balancing act. Reasonable access does not mean unlimited access for all types of recreation and use of motorized vehicles. Given constraints of the property, the Nature Preserve Planning Committee and Alpena Township has decided general access will be limited to foot traffic. The Township will investigate implementing a vendor subscription system for diving guides and other tour guides. This approach would support limited, controlled vehicle access. It is not the intention for the township to provide dedicated staff to manage or police the preserve. The approach will be low impact, wildlands recreation with a focus on nature study, hiking, and bird watching. All management activities should be guided by the goals and objectives of this plan

Long Term Resource Management

The property is home to a number of rare species and functions as an important migratory bird stop-over (neo-tropical birds, shorebirds and waterfowl). While the intention is to minimize impacts to flora and fauna by leaving the property in an undisturbed, natural state, the community will still have to monitor the property and in some case actively manage the natural systems. Public use should be allowed within reason with an emphasis on protecting sensitive areas.

- To maintain ecosystem integrity, invasive species should be monitored and managed. The Natural Features Inventory identified glossy-leaved buckthorn and autumn olive on the property. These plants should be removed as quickly as possible, by cutting and herbicides before they become a bigger problem. A volunteer group could be used to assist in monitoring and removal of invasive species. Timeline: 2008
- An ecological conditions site inspection should be completed every 3-5 years. The site inspection should cover the entire property and be completed by a resource professional with knowledge and experience in completing resource inventories. The inspection should document presence of invasive species, recreational impacts, forest condition and potential threats, and include management recommendations. Timeline: 2011
- The Alpena Township Board and/or the Nature Preserve Committee should evaluate the management plan every five years, or more often if needed, to evaluate management activities and recreational usage in the context of resource protection. If it is determined the Nature Preserve Management Plan should be amended, the Nature Preserve Committee will make those recommendations to the Township Board for their consideration and approval. Timeline: 2013

Trails

There is an existing network of trails developed by the previous owner. The Lake Huron View Trail enters the property from the southeast corner eventually ending at the point. The first several

Alpena Township Nature Preserve

hundred feet of the trail has populations of Dwarf Lake Iris. Therefore, this segment is able to accommodate foot traffic, but will not accommodate vehicular access. A trail runs from the southwest corner of the property in a northeasterly direction and connects to the main trail. This western trail has a gate at the property line and should function as a service drive for vehicular traffic. The service drive is in good condition and does not need any work. Several spurs stub off the main trail, ending at El Cajon Bay.

- Side trails identified for retention are in reasonable condition. Brushing out will be necessary within the next five years to keep the trails open. With increased foot traffic, there are several sites that will need mulching or possibly a short boardwalk. Trails ending at Openings C and D offer access and views of El Cajon Bay. *Timeline: 2010*
- To provide kayak access to Misery Bay, a short trail will need to be developed from the proposed parking lot to the water. Location of the trail should be sensitive to rare plants such as Dwarf Lake Iris. *Timeline: 2009*
- The trails will need to be mowed and brushed out every two to five years. *Timeline: 2012*
- The existing trail network does not offer any loop routes. Construction of a short trail connecting openings C and D would offer a short loop as well as views of El Cajon Bay. Construction of the connection trail is a long term priority and should be considered after higher priority projects are completed. *Timeline: 2013*

Nature Preserve Web Site

A cost effective means of providing information to the public is to use the internet.

- The Community should design a Nature Preserve Web Page. The management plan should be posted on the Community's web site. *Timeline: 2008*
- As educational materials are developed such as brochures, plant lists, park rules and maps, they should be posted on the Nature Preserve Web Page. *Timeline: 2009*

Nature Preserve Brochures

The Nature Preserve Committee has identified the need to develop two brochures for the Nature Preserve.

- Develop a brochure with a trail map, park rules and water access points. Basic information on special plants and animals should be included in this brochure. *Timeline: 2008*
- A separate nature study brochure should be developed. The brochure would provide information on rare plants and animals, plant communities, and cautions to protect fragile areas. Information on bloom times and bird watching should be included in the brochure. *Timeline: 2010*

Parking Lot

The lack of onsite parking, clearly limits use of the Nature Preserve. Visitors are required to park on the roadside, which has narrow shoulders, resulting unsafe conditions.

Alpena Township Nature Preserve

- Pursue acquisition of lots and easements on the south side of Misery Bay Road to construct a parking lot, to provide direct water access and to develop facilities related to the Nature Preserve. *Timeline: 2008-2009*
- Construct a gravel parking lot near the eastern entrance of the Nature Preserve. Location of the parking lot near the eastern entrance would support reasonable access to Lake Huron for paddle sports. The size is designed to accommodate four cars and one school bus. Placement of boulders will help define parking lot edges. It will be necessary to provide barriers at the walking trail entrances to prohibit vehicle access into the Preserve. It will be necessary to conduct site exams to assess presence of wetlands, and rare plants and animals. *Timeline: 2009-2010*
- A kiosk with nature preserve trails map and plant communities, rare plants and animals, geology and park rules should be erected at the parking lot. *Timeline: 2010*

Signage

Directional and informational signs will improve visitors experience at the Nature Preserve.

- Purchase and erect directional signs and information signs along the trails. *Timeline: 2009*
- Construct a kiosk at the parking lot nature preserve trails map and plant communities, rare plants and animals, geology and park rules. *Timeline: 2010*
- Construct a kiosk at the end of the point with information such as plants and communities, karst geology, sinkhole, Misery Bay, Thunder Bay Island Group. *Timeline: 2014*

El Cajon Board Walk and Sinkhole Overlook

The sinkhole in El Cajon Bay is a major focal point of the Preserve. To access the sinkhole, it is necessary to walk to the end of the point then follow the shoreline of El Cajon Bay. A boardwalk will provide more direct access to the sinkhole and protect shoreline resources from overuse. An observation platform will give visitors an elevated view of the sinkhole and bay. The boardwalk will enable divers to have better access to the sinkhole. *Timeline: 2012*

- The Township will need to seek grant funding for both design and construction phases of the boardwalk/overlook project. *Timeline: 2010*
- Conduct a site assessment to determine potential impacts to wetlands and rare plants and animals. *Timeline: 2011*
- Apply for all appropriate permits to the DEQ and Army Corps of Engineers to construct the boardwalk. *Timeline: 2011*
- Construction plans and detailed design for the boardwalk/overlook including construction costs will be developed. *Timeline: 2012*

Alpena Township Nature Preserve

Observation Tower

The point offers the only public views of the Thunder Bay Island Group. To improve visual access, the plan recommends construction of a viewing platform. *Timeline: 2018*

- The Township will need to seek grant funding for both design and construction phases of the boardwalk project. *Timeline: 2015*
- Conduct a site assessment to determine potential impacts to wetlands and rare plants and animals. *Timeline: 2016*
- Apply for all appropriate permits to the DEQ and Army Corps of Engineers to construct the boardwalk. *Timeline: 2016*
- Construction plans and detailed design for the boardwalk including construction costs will be developed. *Timeline: 2017*

Design Details

Alpena Township retained the services of ECT (Environmental Consulting & Technology, Inc.) to assist with developing low-impact development concepts and concept level design details. A field visit was conducted early winter to examine the property and identify opportunities and constraints. Based on analysis of existing conditions, planning goals, and management zones designations, new park facilities have been identified. **Figure 6.1** shows location of proposed park improvements, including trails, parking lot, and boardwalk and observation tower. **Figure 6.2** is the conceptual design of the parking facility. The parking lot is designed to accommodate four cars and one school bus. Landscaping will screen the parking lot from the road. **Figure 6.3** is a conceptual design of the El Cajon sinkhole overlook. The design includes a scuba staging area to provide diving access to the sinkhole. **Figure 6.4** presents the design of the El Cajon Bay boardwalk.

Alpena Township Nature Preserve

Preliminary cost estimates

Parking Lot

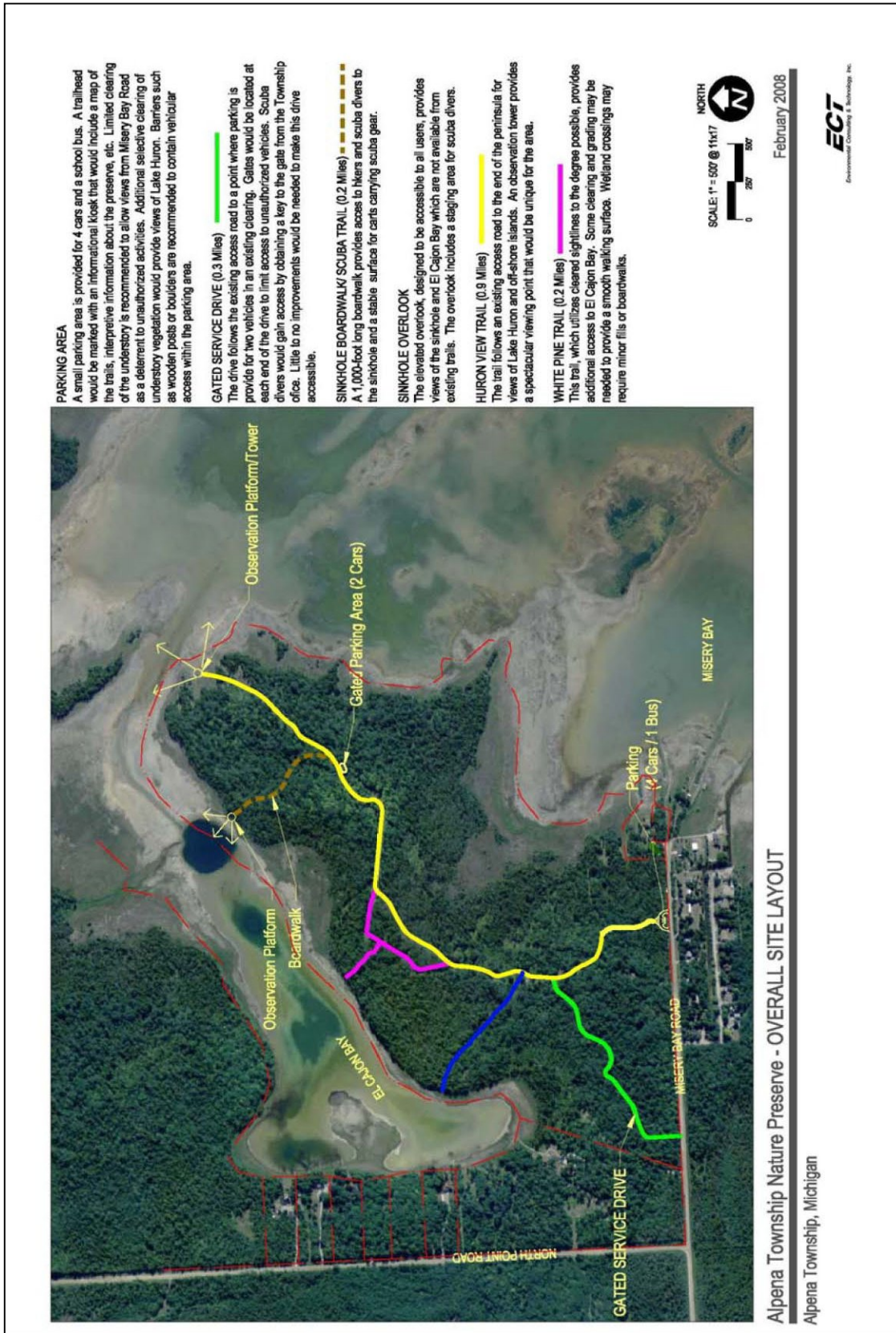
Construction (includes Kiosk and entrance sign)	\$26,500
Design Fees:	\$ 3,200
Wetland delineation, plant survey, permit applications	\$ 3,500
Construction Oversight:	\$ 1,900

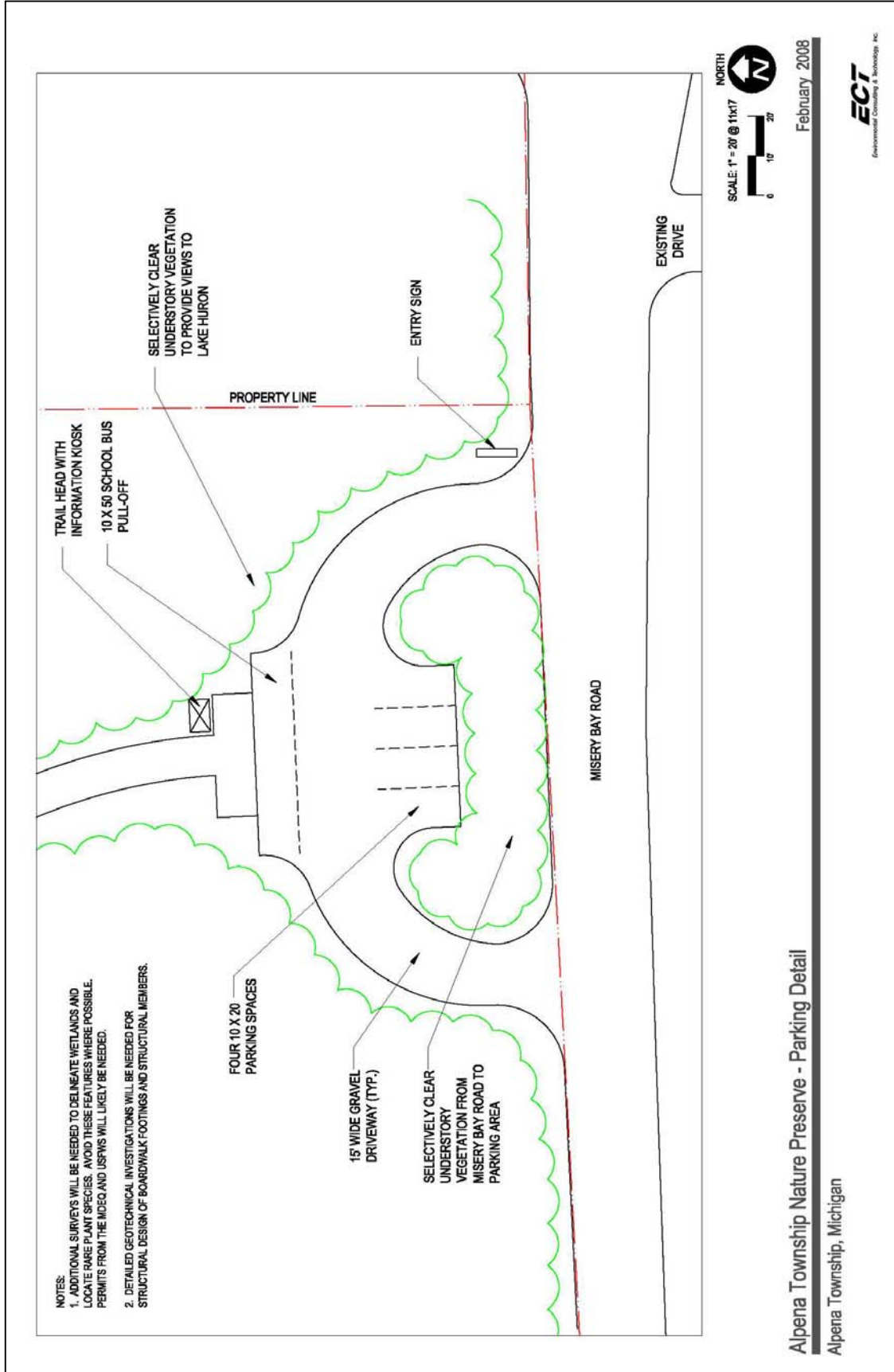
Signs

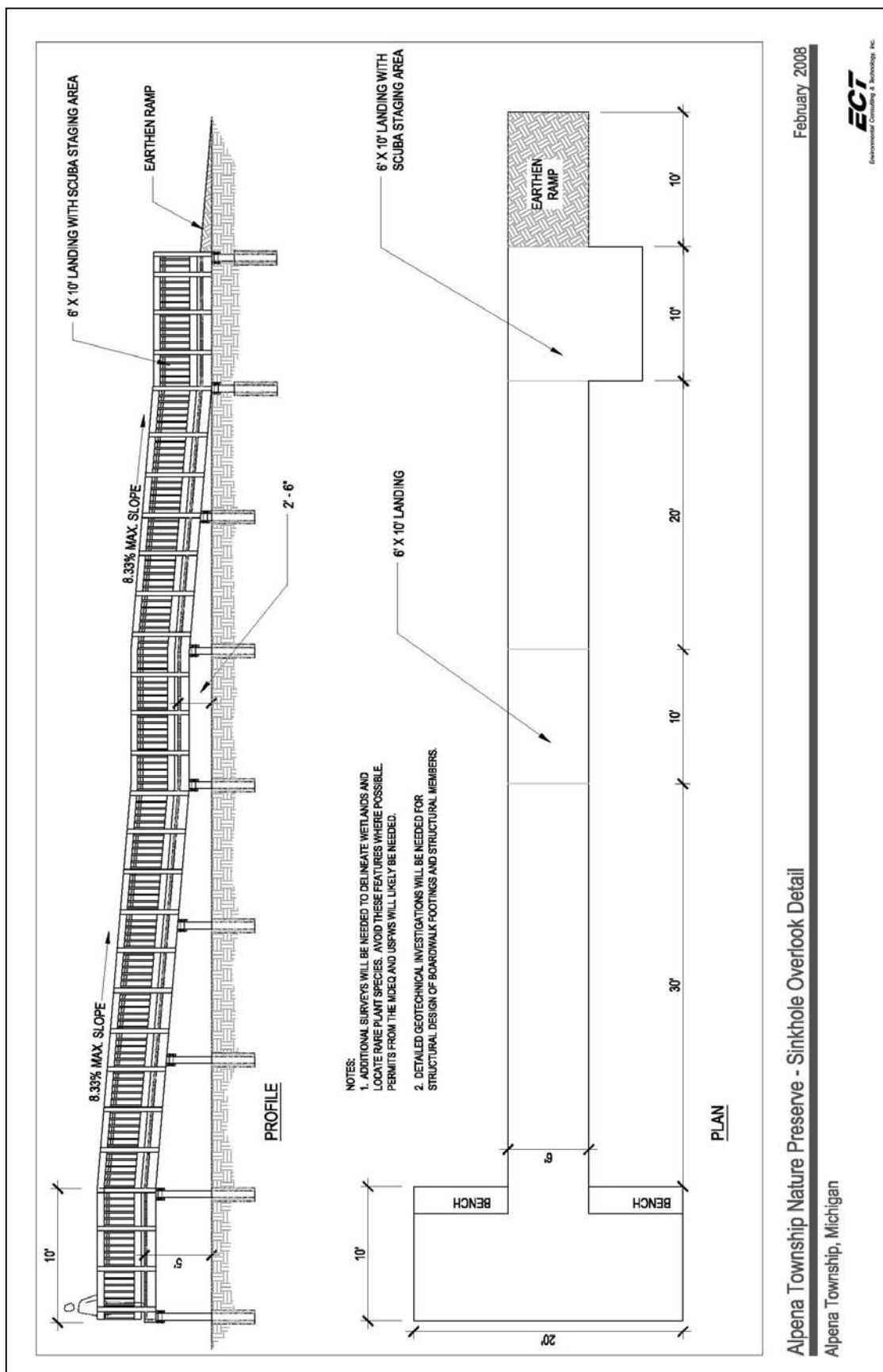
Trail signs (per sign includes post)	\$ 100
Informational signs (per sign includes post)	\$ 100

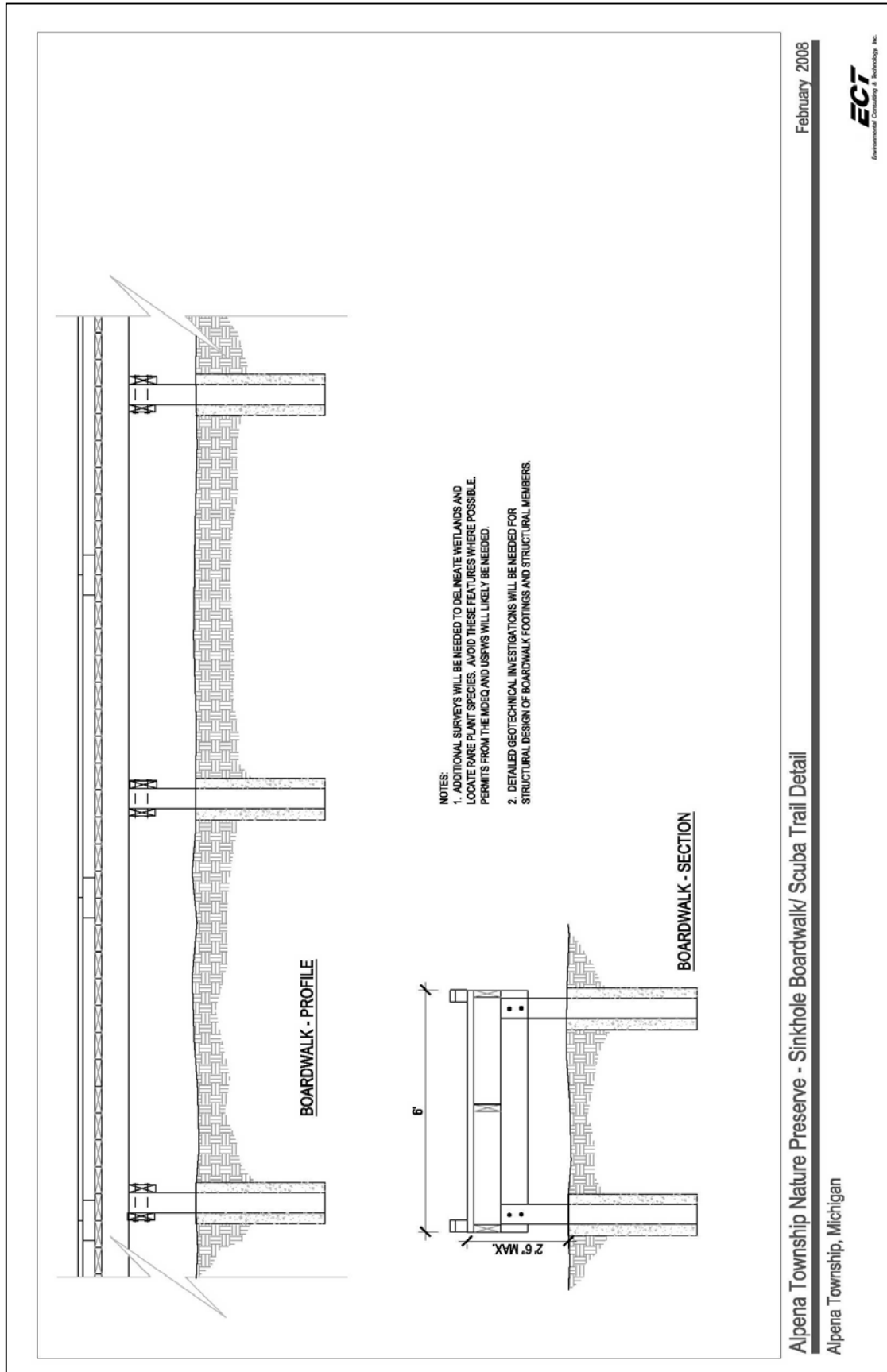
Brochures

Design (per brochure)	\$ 600
Printing (\$0.50 per brochure @ 1000 printed)	\$ 500









Appendix A

Township Board Minutes

REGULAR MEETING

July 7, 2008

The Alpena Township Board of Trustees met at 6:00 p.m. at the Alpena Township Offices, 4385 US-23 North, Alpena, Michigan. Purpose of the early session was to hear presentations by Emily Meyerson to talk about the Alpena to Cheboygan Rail-Trail Surfacing Project. Joseph Hefelee, City Manager of Onaway was also present and supportive of the trail. Owen Joynton of ACC was also going to give a presentation.

Presentation: Emily Meyerson showed the board maps of the proposed trail which will be 69.1 miles long, traversing three counties: Alpena County (11 miles), Presque Isle (33.7 miles) and Cheboygan (24.4 miles). The Michigan Department of Natural Resources and Michigan Department of Transportation are looking to install a hard packed lime-stone surface on the former railroad grade that links Alpena Township to the City of Cheboygan. The trail would be 10-foot wide with two-foot shoulders. The 69.1 mile long trail would cost approximately (\$45,000 per mile) at a total cost of \$3.1 million. Almost \$3 million of that cost would be federal grant money. Alpena Townships share of the cost would be approximately \$20,000. Construction of the project is set to begin in 2011. If the board decides to share in this project, they can budget \$5,000 per year for four years. City Manager of Onaway, Joseph Hefelee asked the board to adopt a resolution in support of the trail.

Resolution of Support (Alpena to Cheboygan Rail-Trail Surfacing Project): It was moved by Trustee Mischley, seconded by Trustee Fournier to adopt a Resolution of supporting the DNR efforts to pursue funding to construct a consistent, hard surface on the nearly 70-mile Rail-Trail extending from Alpena to Cheboygan. Resolution declared adopted by unanimous roll call vote. Yeas: Schuelke, Fournier, Twite, Mischley, Diamond, Dubey and Baker. Nays: None.

Attorney Florip arrived at 7:00 p.m.

Open Regular Meeting: Roll call found present: Supervisor Twite, Clerk Dubey, Treasurer Diamond and Trustees: Baker, Fournier, Mischley and Schuelke.

Adopt Agenda: It was moved by Treasurer Diamond, seconded by Trustee Baker to adopt the agenda presented in typed form and add the following items: Move item E from correspondence to item G Under Old Business. Move item D under correspondence to item 8 Under New Business as well as add Washington DC Conference, K&J Quote for roofing repairs, Leave of Absence request and update on air conditioning unit in back offices. Motion carried by unanimous vote.

Audience Participation: None.

Correspondence: It was moved by Clerk Dubey, seconded by Trustee Baker to receive and file the following correspondence: Alpena Township - Planning, Zoning and Appeals Minutes, Financial Report and Proposed Zoning Ordinance Amendment. Application for Temporary Authorization - Courtyard Restaurant, Alpena Intergovernmental Council - Minutes May 1, 2008, Notice of Intent to Establish Condominium - High Banks, Recycling Advisory Committee - Minutes - May 16, 2008, IRS - Mileage Increase Rates (\$.58.5), Alpena Chamber of Commerce - Appreciation Letter and FEMA - Flood Map Information. Motion carried by unanimous vote.

Minutes: It was moved by Trustee Schuelke, seconded by Trustee Fournier to approve the minutes of the Regular Meeting held on June 2nd, 2008, as presented in typed form. Motion carried by unanimous vote.

Alpena Township Nature Preserve Management Plan: Rick Duell of Northeast Michigan Council of Governments briefed the board on some restructuring which must occur before it is ready for the public's use. In the short-term there is a need for recreational development, signage and a parking facility. Long term goals are constructing a board walk for people to be able to view the sink hole, as well as give divers access. A lookout observation tower was also mentioned. Providing Kayakers direct access to the bay would also be beneficial to the area, from an economical standpoint. It was moved by Trustee Baker, seconded by Trustee Schuelke to adopt the Alpena Township Nature Preserve Management Plan as previously presented. Motion carried by unanimous roll call vote. Yeas: Fournier, Twite, Mischley, Diamond, Dubey, Baker and Schuelke. Nays: None.

House Removal (4534 US-23 North): It was moved by Trustee Fournier, seconded by Trustee Baker to advertise to sell and remove the home located at 4534 US-23 North, which the Township owns. Motion carried by unanimous roll call vote. Yeas: Twite, Mischley, Diamond, Dubey, Baker, Schuelke and Fournier. Nays: None.

Monaghan Point Road Maintenance: The board authorized the supervisor to obtain a price on brushing and graveling Monaghan Point Road. She will bring back information to the August 4th, 2008, Regular Meeting.

Name Road (Highbanks Drive): It was moved by Trustee Baker, seconded by Clerk Dubey to name the the road Highbanks Drive. Road is nearly at end of Lake Winyah before turn on right, goes toward river. Motion carried by unanimous vote.

Paintball Park Update: Attorney Florip briefed the board on the progress of the proposed park. He informed the board that the next step would be to adopt a resolution declaring the parcel of property as a Paintball Park as well as draft an Ordinance to regulate the park. Materials may be available for the next regular meeting.

Conditional Rezoning Ordinance: It was moved by Trustee Schuelke, seconded by Trustee Mischley to adopt Ordinance #105, an Ordinance to amend the zoning ordinance of the Township of Alpena, Alpena County, Michigan, know as Conditional Rezoning. Motion carried by unanimous roll call vote. Yeas: Mischley, Diamond, Dubey, Baker, Schuelke, Fournier and Twite. Nays: None.

AARC Approved Proposed 2009 M-PAC Operating Plan/Budget: It was moved by Trustee Baker, seconded by Trustee Schuelke to allow the supervisor to re-sign the pre-approved 2009 M-PAC Operating Plan and Budget. A couple of words were changed in the document. Motion carried by unanimous vote.

North Point Shores Road (Long Term Maintenance/Improvement Plan): Residents of North Point Shores Road, Kenneth Dragiewicz, Ronald Goodburne, Lorraine Shultz and Margo Dorn addressed the board. The residents wanted to set up a long term maintenance and improvement plan for this private road. At the present time the road has a special assessment district set up, where each owner of land pays a certain amount on their taxes for the maintenance and improvements which are done. The township collects the special assessment funds and in turn pays out of the account any bills which are submitted by the association. The group asked the board to designate someone from the board to contact Lafarge and find out the description of the established easement for road and how wide the right of way is. Attorney Florip explained to the group the difference between the Private Road Improvement and PA#188-1954. It was moved by Trustee Baker, seconded by Trustee Schuelke to allow the supervisor to check into the request of the group and report back to the board at its next meeting. Motion carried by unanimous roll call vote. Yeas: Dubey, Baker, Schuelke, Fournier, Twite, Mischley and Diamond. Nays: None.

Alpena Area Incubator Study: Laura Ingles addressed the board seeking funds in support of a Incubator Study to determine if the incubator is feasible. In addition to the study, Alpena Township will also be granted a seat on the Incubator Task Force. The project was started by ACC and NEMCOG as a opportunity to foster entrepreneurial growth in the Alpena area. NEMCOG obtained a \$25,000 USDA grant to conduct the study, but must raise \$9,000 in local matching funds. A total of \$7,100 has already been contributed, \$1,900 is still needed to complete the grant match requirement. It was moved by Trustee Baker, seconded by Trustee Schuelke to contribute \$750 toward the feasibility study. Motion carried by unanimous roll call vote. Yeas: Baker, Schuelke, Fournier, Twite, Mischley, Diamond and Dubey. Nays: None.

Tables and Chairs Policy: It was moved by Trustee Mischley, seconded by Trustee Fournier to establish a policy where no one borrows the tables and chairs owned by the township. Motion carried by majority vote. Yeas: Schuelke, Fournier, Twite, Mischley, Diamond and Dubey. Nays: Baker.

Building Permit Report (May and June Reports): 39 Permits issued, \$9704 in permit fees collected, grand total construction cost \$1,971,700, fees collected year to date \$15,916, total permits issued year to date 72, construction values year to date \$3,111,400.

Special Assessment/Ordinance Enforcement Seminary: It was moved by Trustee Mischley, seconded by Trustee Baker to allow Leslie Klimaszewski to attend a seminar in Gaylord

on July 17th, 2008, with the township paying registration fees of \$70.00, mileage and meals. Motion carried by unanimous roll call vote. Yeas: Fournier, Twite, Mischley, Diamond, Dubey, Baker and Schuelke. Nays: None.

Fire Run Report: The northside station had 44 runs and the southside station had 33 runs.

800 MHZ Radio: It was moved by Clerk Dubey, seconded by Trustee Baker to pay a yearly fee of \$200 for a 800 MHZ radio for the HazMat Team. Motion carried by unanimous roll call vote. Yeas: Twite, Mischley, Diamond, Dubey, Baker, Schuelke and Fournier. Nays: None.

Advertise for Openings: It was moved by Trustee Mischley, seconded by Trustee Fournier to advertise in the Alpena News for available openings in Alpena Township for paid on call firefighters/EMT/MFL positions. Motion carried by unanimous roll call vote. Yeas: Mischley, Diamond, Dubey, Baker, Schuelke, Fournier and Twite. Nays: None.

Leave of Absence: It was moved by Trustee Schuelke, seconded by Trustee Baker to grant Jeremy Jones a 3-month leave of absence. Motion carried by unanimous vote.

NATaT Conference (Washington DC): It was moved by Clerk Dubey, seconded by Trustee Baker to allow Twite and Fournier to attend the conference in Washington, DC. This is Alpena Townships turn to utilize \$500 from the MTA Local Chapter toward expenses. The supervisor will check on the costs involved. If the costs are reasonable they will attend. The township would pay the balance of all expenses. Motion carried by unanimous roll call vote. Yeas: Diamond, Dubey, Baker, Schuelke, Fournier, Twite and Mischley. Nays: None.

Roof Repair: It was moved by Trustee Mischley, seconded by Treasurer Diamond to authorize K&J Roofing and Siding, Inc. to fix the drain problem the township has when the ice backs up. Cost of project is \$12,950, 50% down and balance on completion. Motion carried by unanimous roll call vote. Yeas: Dubey, Baker, Schuelke, Fournier, Twite, Mischley and Diamond. Nays: None.

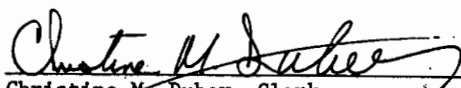
Air Conditioning Unit: The supervisor made the board aware that the air conditioning unit in the water department area of the township building had to be repaired. Cost of repairs will be \$1800.00.

Election Worker's Training Session Pay: It was moved by Treasurer Diamond, seconded by Trustee Baker to pay any worker who attends the training sessions July 15th, July 24th and July 25th, 2008. Workers get paid \$25.00 for session. Workers must be trained otherwise they cannot work any elections (State Law). Motion carried by unanimous roll call vote. Yeas: Baker, Schuelke, Fournier, Twite, Mischley, Diamond and Dubey. Nays: None.

Bills: It was moved by Trustee Baker, seconded by Treasurer Diamond to pay the bills presented. Motion carried by unanimous roll call vote. Yeas: Schuelke, Fournier, Twite, Mischley, Diamond, Dubey and Baker. Nays: None.

Presentation: Olin Joynton, ACC President showed slides depicting what ACC provides to the community. He asked the boards support of the millage request which will be on the August 5th, 2008, Primary Election ballot.

Adjourn: It was moved by Trustee Baker, seconded by Trustee Fournier that we do adjourn at 8:50 p.m. Motion carried by unanimous vote.


Christine M. Dubey, Clerk

Appendix B

Michigan Natural Features Plant List

Site: Alpena Twp Park - boreal forest
 Locale: boreal forest areas
 By: Mike Penskar
 File: q:\FQA\studies\Alpena Twp Park - boreal forest.inv

Site: Alpena Twp Park - boreal forest
 Locale: boreal forest areas
 By: Mike Penskar
 File: q:\FQA\studies\Alpena Twp Park - boreal forest.inv

FLORISTIC QUALITY DATA	Native	23	95.80%	Adventive	1	4.20%
23 NATIVE SPECIES	Tree	7	29.20%	Tree	0	0.00%
24 Total Species	Shrub	0	0.00%	Shrub	0	0.00%
4.7 NATIVE MEAN C	W-Vine	1	4.20%	W-Vine	0	0.00%
4.5 W/Adventives	H-Vine	0	0.00%	H-Vine	0	0.00%
22.3 NATIVE FQI	P-Forb	7	29.20%	P-Forb	1	4.20%
21.8 W/Adventives	B-Forb	0	0.00%	B-Forb	0	0.00%
1.4 NATIVE MEAN W	A-Forb	0	0.00%	A-Forb	0	0.00%
1.5 W/Adventives	P-Grass	1	4.20%	P-Grass	0	0.00%
AVG: Faculative (-)	A-Grass	0	0.00%	A-Grass	0	0.00%
	P-Sedge	4	16.70%	P-Sedge	0	0.00%
	A-Sedge	0	0.00%	A-Sedge	0	0.00%
	Fern	3	12.50%			

ACRONYM C	SCIENTIFIC NAME	W	WETNESS	PHYSIOGNOMY	COMMON NAME
ABIBAL	3 Abies balsamea	-3	FACW	Nt Tree	BALSAM FIR
ACTPAC	7 Actaea pachypoda	5	UPL	Nt P-Forb	DOLL'S EYES
ASTMAC	4 Aster macrophyllus	5	UPL	Nt P-Forb	BIG LEAVED ASTER
BETPAP	2 Betula papyrifera	2	FACU+	Nt Tree	PAPER BIRCH
BOTVIR	5 Botrychium virginianum	3	FACU	Nt Fern	RATTLESNAKE FERN
CXCONC	10 Carex concinna	2	FACU+	Nt P-Sedge	BEAUTY SEDGE
CXDEWE	3 Carex deweyana	4	FACU-	Nt P-Sedge	SEDGE
CXEBUR	7 Carex eburnea	4	FACU-	Nt P-Sedge	SEDGE
CXPEDU	5 Carex pedunculata	5	UPL	Nt P-Sedge	SEDGE
EPIHEL	0 EPIPACTIS HELLEBORINE	5	UPL	Ad P-Forb	HELLEBORINE
GYMDRY	5 Gymnocarpium dryopteris	0	FAC	Nt Fern	OAK FERN
IRILAC	9 Iris lacustris	0	FAC	Nt P-Forb	DWARF LAKE IRIS
MAICAC	4 Maianthemum canadense	0	FAC	Nt P-Forb	CANADA MAYFLOWER
PICGLA	3 Picea glauca	3	FACU	Nt Tree	WHITE SPRUCE
PICMAR	6 Picea mariana	-3	FACW	Nt Tree	BLACK SPRUCE
POLPAU	7 Polygala paucifolia	3	FACU	Nt P-Forb	GAY WINGS
POPGRA	4 Populus grandidentata	3	FACU	Nt Tree	BIG TOOTHED ASPEN
POPTRE	1 Populus tremuloides	0	FAC	Nt Tree	QUAKING ASPEN
PTEAQU	0 Pteridium aquilinum	3	FACU	Nt Fern	BRACKEN FERN
SCHPUP	5 Schizachne purpurascens	2	FACU+	Nt P-Grass	FALSE MELIC
SMISTE	5 Smilacina stellata	1	FAC-	Nt P-Forb	STARRY FALSE SOLOMON SEAL
THUOCC	4 Thuja occidentalis	-3	FACW	Nt Tree	ARBOR VITAE
TOXRAR	2 Toxicodendron radicans	-1	FAC+	Nt W-Vine	POISON IVY
VIOREN	6 Viola renifolia	-3	FACW	Nt P-Forb	KIDNEY LEAVED VIOLET

Site: Alpena Twp Park - northern fen
Locale: Northern fen areas
By: Mike Penskar
File: q:\FQA\studies\Alpena Twp Park - northern fen.inv

Site: Alpena Twp Park - northern fen
Locale: Northern fen areas
By: Mike Penskar
File: q:\FQA\studies\Alpena Twp Park - northern fen.inv

FLORISTIC QUALITY DATA	Native	74	97.40%	Adventive	2	2.60%
74 NATIVE SPECIES	Tree	8	10.50%	Tree	0	0.00%
76 Total Species	Shrub	9	11.80%	Shrub	0	0.00%
6.1 NATIVE MEAN C	W-Vine	0	0.00%	W-Vine	0	0.00%
5.9 W/Adventives	H-Vine	0	0.00%	H-Vine	0	0.00%
52.2 NATIVE FQI	P-Forb	35	46.10%	P-Forb	0	0.00%
51.5 W/Adventives	B-Forb	1	1.30%	B-Forb	0	0.00%
-2.5 NATIVE MEAN W	A-Forb	3	3.90%	A-Forb	0	0.00%
-2.4 W/Adventives	P-Grass	5	6.60%	P-Grass	2	2.60%
AVG: Fac. Wetland (-)	A-Grass	0	0.00%	A-Grass	0	0.00%
	P-Sedge	12	15.80%	P-Sedge	0	0.00%
	A-Sedge	0	0.00%	A-Sedge	0	0.00%
	Fern	1	1.30%			

ACRONYM	C	SCIENTIFIC NAME	W	WETNESS	PHYSIOGNOMY	COMMON NAME
ABIBAL	3	Abies balsamea	-3	FACW	Nt Tree	BALSAM FIR
AGRGIG	0	AGROSTIS GIGANTEA	0	FAC	Ad P-Grass	REDTOP
ANDSCO	5	Andropogon scoparius	3	FACU	Nt P-Grass	LITTLE BLUESTEM GRASS
ASTLAN	2	Aster lanceolatus	-3	FACW	Nt P-Forb	EASTERN LINED ASTER
ASTUMB	5	Aster umbellatus	-3	FACW	Nt P-Forb	TALL FLAT TOP WHITE ASTER
BETPAP	2	Betula papyrifera	2	FACU+	Nt Tree	PAPER BIRCH
CACPLA	10	Cacalia plantaginea	0	FAC	Nt P-Forb	TUBEROUS INDIAN PLANTAIN
CALCAN	3	Calamagrostis canadensis	-5	OBL	Nt P-Grass	BLUE JOINT GRASS
CALINE	8	Calamagrostis inexpansa	-4	FACW+	Nt P-Grass	BOG REEDGRASS
CALARK	10	Calamintha arkanisana	-3	FACW	Nt P-Forb	LOW CALAMINT
CXCAP1	9	Carex capillaris	-3	FACW	Nt P-Sedge	SEDGE
CXCONC	10	Carex concinna	2	FACU+	Nt P-Sedge	BEAUTY SEDGE
CXEBUR	7	Carex eburnea	4	FACU-	Nt P-Sedge	SEDGE
CXFLAV	4	Carex flava	-5	OBL	Nt P-Sedge	SEDGE
CXSTER	10	Carex sterilis	-5	OBL	Nt P-Sedge	SEDGE
CXSTRI	4	Carex stricta	-5	OBL	Nt P-Sedge	SEDGE
CXVIRI	4	Carex viridula	-5	OBL	Nt P-Sedge	SEDGE
CASCOC	8	Castilleja coccinea	0	FAC	Nt A-Forb	INDIAN PAINTBRUSH
CIRMUT	6	Cirsium muticum	-5	OBL	Nt B-Forb	SWAMP THISTLE
CLAMAR	10	Cladium mariscoides	-5	OBL	Nt P-Sedge	TWIG RUSH
COMUMB	5	Comandra umbellata	3	FACU	Nt P-Forb	BASTARD TOADFLAX
CYCAPU	5	Cypripedium calceolus var. pubescens	-1	FAC+	Nt P-Forb	LARGE YELLOW LADY'S SLIPPER
DESCES	9	Deschampsia cespitosa	-4	FACW+	Nt P-Grass	HAIR GRASS
EUPMAM	4	Eupatorium maculatum	-5	OBL	Nt P-Forb	JOE PYE WEED
EUPPER	4	Eupatorium perfoliatum	-4	FACW+	Nt P-Forb	COMMON BONESET
EUTGRA	3	Euthamia graminifolia	-2	FACW-	Nt P-Forb	GRASS LEAVED GOLDENROD
FRAVIR	2	Fragaria virginiana	1	FAC-	Nt P-Forb	WILD STRAWBERRY
GEOLIV	9	Geocaulon lividum	-2	FACW-	Nt P-Forb	GEOCAULON
HALDEF	7	Halenia deflexa	0	FAC	Nt A-Forb	SPURRED GENTIAN
HYPKAL	10	Hypericum kalmianum	-2	FACW-	Nt Shrub	KALM'S ST. JOHN'S WORT
IRILAC	9	Iris lacustris	0	FAC	Nt P-Forb	DWARF LAKE IRIS
IRIVER	5	Iris versicolor	-5	OBL	Nt P-Forb	WILD BLUE FLAG
JUNBAL	4	Juncus balticus	-5	OBL	Nt P-Forb	RUSH
JUNHOR	10	Juniperus horizontalis	1	FAC-	Nt Shrub	CREeping JUNIPER
LARLAR	5	Larix laricina	-3	FACW	Nt Tree	TAMARACK
LILPHI	10	Lilium philadelphicum	1	FAC-	Nt P-Forb	WOOD LILY
LOBKAL	10	Lobelia kalmii	-5	OBL	Nt P-Forb	BOG LOBELIA
LOBSIP	4	Lobelia siphilitica	-4	FACW+	Nt P-Forb	GREAT BLUE LOBELIA
MUHGLO	10	Muhlenbergia glomerata	-4	FACW+	Nt P-Grass	MARSH WILD TIMOTHY
MYRGAL	6	Myrica gale	-5	OBL	Nt Shrub	SWEET GALE
PARGLA	8	Parnassia glauca	-5	OBL	Nt P-Forb	GRASS OF PARNASSUS
PICGLA	3	Picea glauca	3	FACU	Nt Tree	WHITE SPRUCE
PICMAR	6	Picea mariana	-3	FACW	Nt Tree	BLACK SPRUCE
POACOM	0	POA COMPRESSA	2	FACU+	Ad P-Grass	CANADA BLUEGRASS
POPBAL	2	Populus balsamifera	-3	FACW	Nt Tree	BALSAM POPLAR
POPTRE	1	Populus tremuloides	0	FAC	Nt Tree	QUAKING ASPEN
POTANS	5	Potentilla anserina	-4	FACW+	Nt P-Forb	SILVERWEED
POTFRU	10	Potentilla fruticosa	-3	FACW	Nt Shrub	SHRUBBY CINQUEFOIL
PRIMIS	10	Primula mistassinica	-3	FACW	Nt P-Forb	DWARF CANADIAN PRIMROSE
PRUVUL	0	PRUNELLA VULGARIS	0	FAC	Nt P-Forb	LAWN PRUNELLA
RHYCAL	10	Rhynchospora capillacea	-5	OBL	Nt P-Sedge	BEAK RUSH
RUBSTR	2	Rubus strigosus	-2	FACW-	Nt Shrub	WILD RED RASPBERRY
RUDHIR	1	Rudbeckia hirta	3	FACU	Nt P-Forb	BLACK EYED SUSAN
SALCAN	9	Salix candida	-5	OBL	Nt Shrub	HOARY WILLOW
SALDIS	1	Salix discolor	-3	FACW	Nt Shrub	PUSSY WILLOW
SALPET	1	Salix petiolaris	-4	FACW+	Nt Shrub	SLENDER WILLOW
SARPUP	10	Sarracenia purpurea	-5	OBL	Nt P-Forb	PITCHER PLANT
SCHACU	5	Schoenoplectus acutus	-5	OBL	Nt P-Sedge	HARDSTEM BULRUSH
SCHPUN	5	Schoenoplectus pungens	-5	OBL	Nt P-Sedge	THREE SQUARE
SELECL	5	Selaginella eclipses	-4	FACW+	Nt Fern Ally	SELAGINELLA
SENPAU	3	Senecio pauperculus	-1	FAC+	Nt P-Forb	BALSAM RAGWORT
SHECAN	7	Shepherdia canadensis	5	UPL	Nt Shrub	SOAPBERRY
SOLGIG	3	Solidago gigantea	-3	FACW	Nt P-Forb	LATE GOLDENROD
SOLOHI	8	Solidago ohioensis	-5	OBL	Nt P-Forb	OHIO GOLDENROD
SOLPTA	6	Solidago ptarmicoides	5	UPL	Nt P-Forb	UPLAND WHITE GOLDENROD
SOLRUG	3	Solidago rugosa	-1	FAC+	Nt P-Forb	ROUGH GOLDENROD
SOLLUL	4	Solidago uliginosa	-5	OBL	Nt P-Forb	BOG GOLDENROD
SPICER	4	Spiranthes cernua	-2	FACW-	Nt P-Forb	NODDING LADIES' TRESSES
SPIROM	10	Spiranthes romanzoffiana	-4	FACW+	Nt P-Forb	HOODED LADIES' TRESSES
THUOCC	4	Thuja occidentalis	-3	FACW	Nt Tree	ARBOR VITAE
TOFGLU	10	Tofieldia glutinosa	-5	OBL	Nt P-Forb	FALSE ASPHODEL
TRICES	10	Trichophorum cespitosum	-5	OBL	Nt P-Sedge	BULRUSH
TRIMAR	8	Triglochin maritimum	-5	OBL	Nt P-Forb	COMMON BOG ARROW GRASS
UTRCOR	10	Utricularia cornuta	-5	OBL	Nt A-Forb	HORNED BLADDERWORT
VIONEP	8	Viola nephrophylla	-4	FACW+	Nt P-Forb	NORTHERN BOG VIOLET
VIOREN	6	Viola renifolia	-3	FACW	Nt P-Forb	KIDNEY LEAVED VIOLET

Site: Alpena Twp Park - rich conifer swamp
 Locale: cedar swamp areas
 By: Mike Penskar
 File: q:\FQA\studies\alpena Twp Park - rich conifer swamp.inv

Site: Alpena Twp Park - rich conifer swamp
 Locale: cedar swamp areas
 By: Mike Penskar
 File: q:\FQA\studies\alpena Twp Park - rich conifer swamp.inv

FLORISTIC QUALITY DATA	Native	52	100.00%	Adventive	0	0.00%
52 NATIVE SPECIES	Tree	11	21.20%	Tree	0	0.00%
52 Total Species	Shrub	4	7.70%	Shrub	0	0.00%
5.2 NATIVE MEAN C	W-Vine	1	1.90%	W-Vine	0	0.00%
5.2 W/Adventives	H-Vine	0	0.00%	H-Vine	0	0.00%
37.3 NATIVE FQI	P-Forb	23	44.20%	P-Forb	0	0.00%
37.3 W/Adventives	B-Forb	1	1.90%	B-Forb	0	0.00%
-0.5 NATIVE MEAN W	A-Forb	0	0.00%	A-Forb	0	0.00%
-0.5 W/Adventives	P-Grass	3	5.80%	P-Grass	0	0.00%
AVG: Faculative	A-Grass	0	0.00%	A-Grass	0	0.00%
	P-Sedge	7	13.50%	P-Sedge	0	0.00%
	A-Sedge	0	0.00%	A-Sedge	0	0.00%
	Fern	2	3.80%			

ACRONYM C	SCIENTIFIC NAME	W	WETNESS	PHYSIOGNOMY	COMMON NAME
ABIBAL	3 Abies balsamea	-3	FACW	Nt Tree	BALSAM FIR
ACERUB	1 Acer rubrum	0	FAC	Nt Tree	RED MAPLE
ACTPAC	7 Actaea pachypoda	5	UPL	Nt P-Forb	DOLL'S EYES
AQUCAN	5 Aquilegia canadensis	1	FAC-	Nt P-Forb	WILD COLUMBINE
ARCUVA	8 Arctostaphylos uva-ursi	5	UPL	Nt Shrub	BEARBERRY
ASTLAN	2 Aster lanceolatus	-3	FACW	Nt P-Forb	EASTERN LINED ASTER
ASTMAC	4 Aster macrophyllus	5	UPL	Nt P-Forb	BIG LEAVED ASTER
ASTUMB	5 Aster umbellatus	-3	FACW	Nt P-Forb	TALL FLAT TOP WHITE ASTER
BETPAP	2 Betula papyrifera	2	FACU+	Nt Tree	PAPER BIRCH
BOTVIR	5 Botrychium virginianum	3	FACU	Nt Fern	RATTLESNAKE FERN
CALCAN	3 Calamagrostis canadensis	-5	OBL	Nt P-Grass	BLUE JOINT GRASS
CALARK	10 Calamintha arkansana	-3	FACW	Nt P-Forb	LOW CALAMINT
CXCAPI	9 Carex capillaris	-3	FACW	Nt P-Sedge	SEDGE
CXCAST	6 Carex castanea	-4	FACW+	Nt P-Sedge	SEDGE
CXCONC	10 Carex concinna	2	FACU+	Nt P-Sedge	BEAUTY SEDGE
CXDEWE	3 Carex deweyana	4	FACU-	Nt P-Sedge	SEDGE
CXEBUR	7 Carex eburnea	4	FACU-	Nt P-Sedge	SEDGE
CXPEDU	5 Carex pedunculata	5	UPL	Nt P-Sedge	SEDGE
CXTRIS	9 Carex trisperma	-5	OBL	Nt P-Sedge	SEDGE
CIRMUT	6 Cirsium muticum	-5	OBL	Nt B-Forb	SWAMP THISTLE
COMUMB	5 Comandra umbellata	3	FACU	Nt P-Forb	BASTARD TOADFLAX
FESSUB	5 Festuca subverticillata	2	FACU+	Nt P-Grass	NODDING FESCUE
FRAAME	5 Fraxinus americana	3	FACU	Nt Tree	WHITE ASH
GYMDRY	5 Gymnocarpium dryopteris	0	FAC	Nt Fern	OAK FERN
IRILAC	9 Iris lacustris	0	FAC	Nt P-Forb	DWARF LAKE IRIS
IRIVER	5 Iris versicolor	-5	OBL	Nt P-Forb	WILD BLUE FLAG
JUNBAL	4 Juncus balticus	-5	OBL	Nt P-Forb	RUSH
LARLAR	5 Larix laricina	-3	FACW	Nt Tree	TAMARACK
LINBOR	6 Linnaea borealis	0	FAC	Nt P-Forb	TWINFLOWER
LITLAT	10 Lithospermum latifolium	5	UPL	Nt P-Forb	BROAD LEAVED PUCCOON
LOBKAL	10 Lobelia kalmii	-5	OBL	Nt P-Forb	BOG LOBELIA
PETPAL	10 Petasites palmatus	-3	FACW	Nt P-Forb	SWEET COLTSFOOT
PICGLA	3 Picea glauca	3	FACU	Nt Tree	WHITE SPRUCE
PICMAR	6 Picea mariana	-3	FACW	Nt Tree	BLACK SPRUCE
POLPAU	7 Polygala paucifolia	3	FACU	Nt P-Forb	GAY WINGS
POPBAL	2 Populus balsamifera	-3	FACW	Nt Tree	BALSAM POPLAR
POPGRA	4 Populus grandidentata	3	FACU	Nt Tree	BIG TOOTHED ASPEN
POPTRE	1 Populus tremuloides	0	FAC	Nt Tree	QUAKING ASPEN
POTFRU	10 Potentilla fruticosa	-3	FACW	Nt Shrub	SHRUBBY CINQUEFOIL
PYRROT	7 Pyrola rotundifolia	1	FAC-	Nt P-Forb	ROUND LEAVED PYROLA
SALDIS	1 Salix discolor	-3	FACW	Nt Shrub	PUSSY WILLOW
SALEXI	1 Salix exigua	-5	OBL	Nt Shrub	SANDBAR WILLOW
SCHPUP	5 Schizachne purpurascens	2	FACU+	Nt P-Grass	FALSE MELIC
SMISTE	5 Smilacina stellata	1	FAC-	Nt P-Forb	STARRY FALSE SOLOMON SEAL
SOLCAN	1 Solidago canadensis	3	FACU	Nt P-Forb	CANADA GOLDENROD
SOLGIG	3 Solidago gigantea	-3	FACW	Nt P-Forb	LATE GOLDENROD
SOLRUG	3 Solidago rugosa	-1	FAC+	Nt P-Forb	ROUGH GOLDENROD
SOLULI	4 Solidago uliginosa	-5	OBL	Nt P-Forb	BOG GOLDENROD
THUOCC	4 Thuja occidentalis	-3	FACW	Nt Tree	ARBOR VITAE
TOXRAR	2 Toxicodendron radicans	-1	FAC+	Nt W-Vine	POISON IVY
TRIBOR	5 Trientalis borealis	-1	FAC+	Nt P-Forb	STARFLOWER
VIOREN	6 Viola renifolia	-3	FACW	Nt P-Forb	KIDNEY LEAVED VIOLET

Site: Alpena Twp Park - dry mesic n. forest
Locale: Dry mesic n. forest areas
By: Mike Penskar
File: q:\FQA\studies\Alpena Twp Park - dry mesic northern forest.inv

Site: Alpena Twp Park - dry mesic n. forest
Locale: Dry mesic n. forest areas
By: Mike Penskar
File: q:\FQA\studies\Alpena Twp Park - dry mesic northern forest.inv

FLORISTIC QUALITY DATA	Native	63	80.80%	Adventive	15	19.20%
63 NATIVE SPECIES	Tree	10	12.80%	Tree	0	0.00%
78 Total Species	Shrub	10	12.80%	Shrub	1	1.30%
4.1 NATIVE MEAN C	W-Vine	0	0.00%	W-Vine	0	0.00%
3.3 W/Adventives	H-Vine	0	0.00%	H-Vine	0	0.00%
32.8 NATIVE FQI	P-Forb	27	34.60%	P-Forb	3	3.80%
29.4 W/Adventives	B-Forb	0	0.00%	B-Forb	5	6.40%
1 NATIVE MEAN W	A-Forb	2	2.60%	A-Forb	1	1.30%
1.4 W/Adventives	P-Grass	5	6.40%	P-Grass	5	6.40%
AVG: Faculative (-)	A-Grass	0	0.00%	A-Grass	0	0.00%
	P-Sedge	7	9.00%	P-Sedge	0	0.00%
	A-Sedge	0	0.00%	A-Sedge	0	0.00%
	Fern	2	2.60%			

ACRONYM C	SCIENTIFIC NAME	W	WETNESS	PHYSIOGNOMY	COMMON NAME
ABIBAL	3 Abies balsamea	-3	FACW	Nt Tree	BALSAM FIR
ACERUB	1 Acer rubrum	0	FAC	Nt Tree	RED MAPLE
ACHMIL	1 Achillea millefolium	3	FACU	Nt P-Forb	YARROW
AGRREP	0 AGROPYRON REPENS	3	FACU	Ad P-Grass	QUACK GRASS
AGRTRA	8 Agropyron trachycaulum	0	FAC	Nt P-Grass	SLENDER WHEAT GRASS
AGRGIG	0 AGROSTIS GIGANTEA	0	FAC	Ad P-Grass	REDTOP
ANAMAR	3 Anaphalis margaritacea	5	UPL	Nt P-Forb	PEARLY EVERLASTING
ANDSCO	5 Andropogon scoparius	3	FACU	Nt P-Grass	LITTLE BLUESTEM GRASS
AQUCAN	5 Aquilegia canadensis	1	FAC-	Nt P-Forb	WILD COLUMBINE
ARANUD	5 Aralia nudicaulis	3	FACU	Nt P-Forb	WILD SARSAPARILLA
ARCUVA	8 Arctostaphylos uva-ursi	5	UPL	Nt Shrub	BEARBERRY
ASTMAC	4 Aster macrophyllus	5	UPL	Nt P-Forb	BIG LEAVED ASTER
ASTUMB	5 Aster umbellatus	-3	FACW	Nt P-Forb	TALL FLAT TOP WHITE ASTER
BETPAP	2 Betula papyrifera	2	FACU+	Nt Tree	PAPER BIRCH
BRIMED	0 BRIZA MEDIA	0	FAC	Ad P-Grass	QUAKING GRASS
CALCAN	3 Calamagrostis canadensis	-5	OBL	Nt P-Grass	BLUE JOINT GRASS
CAMROT	6 Campanula rotundifolia	1	FAC-	Nt P-Forb	HAREBELL
CXCAPI	9 Carex capillaris	-3	FACW	Nt P-Sedge	SEDGE
CXCAST	6 Carex castanea	-4	FACW+	Nt P-Sedge	SEDGE
CXEBUR	7 Carex eburnea	4	FACU-	Nt P-Sedge	SEDGE
CXGRAN	2 Carex granularis	-4	FACW+	Nt P-Sedge	SEDGE
CXPEDU	5 Carex pedunculata	5	UPL	Nt P-Sedge	SEDGE
CVULP	1 Carex vulpinoidea	-5	OBL	Nt P-Sedge	SEDGE
CENMAU	0 CENTAUREA MACULOSA	5	UPL	Ad B-Forb	SPOTTED BLUET
CHRLEU	0 CHRYSANTHEMUM LEUCANTHEMUM	5	UPL	Ad P-Forb	OX EYE DAISY
CIRVUL	0 CIRSIUM VULGARE	4	FACU-	Ad B-Forb	BULL THISTLE
CLIVUL	3 Clinopodium vulgare	5	UPL	Nt P-Forb	WILD BASIL
CONCAN	0 Coryza canadensis	1	FAC-	Nt A-Forb	HORSEWEED
CORCAA	6 Cornus canadensis	0	FAC	Nt Shrub	BUNCHBERRY
CORRUG	6 Cornus rugosa	5	UPL	Nt Shrub	ROUND LEAVED DOGWOOD
CRYCAN	2 Cryptotaenia canadensis	0	FAC	Nt P-Forb	HONEWORT
DANSPI	4 Danthonia spicata	5	UPL	Nt P-Grass	POVERTY GRASS; OATGRASS
DAUCAR	0 DAUCUS CAROTA	5	UPL	Ad B-Forb	QUEEN ANNE'S LACE
DIELON	4 Diervilla lonicera	5	UPL	Nt Shrub	BUSH HONEYSUCKLE
ELAUMB	0 ELAEAGNUS UMBELLATA	3	FACU	Ad Shrub	AUTUMN OLIVE
EQUARV	0 Equisetum arvense	0	FAC	Nt Fern Ally	COMMON HORSETAIL
ERISTR	4 Erigeron strigosus	1	FAC-	Nt P-Forb	DAISY FLEABANE
EUPESU	0 EUPHORBIA ESULA	5	UPL	Ad P-Forb	LEAFY SPURGE
EUTGRA	3 Euthamia graminifolia	-2	FACW-	Nt P-Forb	GRASS LEAVED GOLDENROD
FRAAME	5 Fraxinus americana	3	FACU	Nt Tree	WHITE ASH
GEOLIV	9 Geocaulon lividum	-2	FACW-	Nt P-Forb	GEOCAULON
HALDEF	7 Halenia deflexa	0	FAC	Nt A-Forb	SPURRED GENTIAN
HYPPER	0 HYPERICUM PERFORATUM	5	UPL	Ad P-Forb	COMMON ST. JOHN'S WORT
IRILAC	9 Iris lacustris	0	FAC	Nt P-Forb	DWARF LAKE IRIS
JUNDUD	1 Juncus dudleyi	0	FAC	Nt P-Forb	DUDLEY'S RUSH
JUNHOR	10 Juniperus horizontalis	1	FAC-	Nt Shrub	CREeping JUNIPER
LINBOR	6 Linnaea borealis	0	FAC	Nt P-Forb	TWINFLOWER
LITLAT	10 Lithospermum latifolium	5	UPL	Nt P-Forb	BROAD LEAVED PUCCOON
LONCAN	5 Lonicera canadensis	3	FACU	Nt Shrub	AMERICAN FLY HONEYSUCKLE
LYCAME	2 Lycopodium americanus	-5	OBL	Nt P-Forb	COMMON WATER HOREHOUND
MAICAC	4 Maianthemum canadense	0	FAC	Nt P-Forb	CANADA MAYFLOWER
MELALB	0 MELILOTUS ALBA	3	FACU	Ad B-Forb	WHITE SWEET CLOVER
MITREP	5 Mitchella repens	2	FACU+	Nt P-Forb	PARTRIDGE BERRY
ORYASP	6 Oryzopsis asperifolia	5	UPL	Nt P-Grass	ROUGH LEAVED RICE GRASS
PHLPRA	0 PHLEUM PRATENSE	3	FACU	Ad P-Grass	TIMOTHY
PICGLA	3 Picea glauca	3	FACU	Nt Tree	WHITE SPRUCE
PINSTR	3 Pinus strobus	3	FACU	Nt Tree	WHITE PINE
POACOM	0 POA COMPRESSA	2	FACU+	Ad P-Grass	CANADA BLUEGRASS
POPBAL	2 Populus balsamifera	-3	FACW	Nt Tree	BALSAM POPLAR
POPGRA	4 Populus grandidentata	3	FACU	Nt Tree	BIG TOOTHED ASPEN
POPTRE	1 Populus tremuloides	0	FAC	Nt Tree	QUAKING ASPEN
PRUVUL	0 PRUNELLA VULGARIS	0	FAC	Nt P-Forb	LAWN PRUNELLA
PRUVIR	2 Prunus virginiana	1	FAC-	Nt Shrub	CHOKE CHERRY
PTEAQU	0 Pteridium aquilinum	3	FACU	Nt Fern	BRACKEN FERN
QUERUB	5 Quercus rubra	3	FACU	Nt Tree	RED OAK
RUBODO	6 Rubus odoratus	5	UPL	Nt Shrub	FLOWERING RASPBERRY
RUBPUB	4 Rubus pubescens	-4	FACW+	Nt P-Forb	DWARF RASPBERRY
RUBSTR	2 Rubus strigosus	-2	FACW-	Nt Shrub	WILD RED RASPBERRY
RUDHIR	1 Rudbeckia hirta	3	FACU	Nt P-Forb	BLACK EYED SUSAN
SCIATR	3 Scirpus atrovirens	-5	OBL	Nt P-Sedge	BULRUSH
SHECAN	7 Shepherdia canadensis	5	UPL	Nt Shrub	SOAPBERRY
SOLCAN	1 Solidago canadensis	3	FACU	Nt P-Forb	CANADA GOLDENROD
SOLNEM	2 Solidago nemoralis	5	UPL	Nt P-Forb	OLD FIELD GOLDENROD
SOLRUG	3 Solidago rugosa	-1	FAC+	Nt P-Forb	ROUGH GOLDENROD
STEMED	0 STELLARIA MEDIA	3	FACU	Ad A-Forb	COMMON CHICKWEED
TRIBOR	5 Trientalis borealis	-1	FAC+	Nt P-Forb	STARFLOWER
VERTHA	0 VERBASCUM THAPSUS	5	UPL	Ad B-Forb	COMMON MULLEIN
VIOREN	6 Viola renifolia	-3	FACW	Nt P-Forb	KIDNEY LEAVED VIOLET

Site: Alpena Township Park
 Locale: Alpena County
 Date: August 1-3 2007 20 hours
 By: Mike Penskar
 File: q:\FQA\studies\Alpena Twp Park-master list.inv

Notes: First day reconnaissance after meeting with Rick Duell on Wednesday August 1.
 Second day coverage of middle and western regions of park August 2.
 Third day coverage of eastern region (tip of peninsula and large northern fen) August 3.

FLORISTIC QUALITY DATA	Native	128	85.90%	Adventive	21	14.10%
128 NATIVE SPECIES	Tree	13	8.70%	Tree	0	0.00%
149 Total Species	Shrub	17	11.40%	Shrub	2	1.30%
5.3 NATIVE MEAN C	W-Vine	1	0.70%	W-Vine	0	0.00%
4.5 W/Adventives	H-Vine	0	0.00%	H-Vine	0	0.00%
59.8 NATIVE FQI	P-Forb	58	38.90%	P-Forb	7	4.70%
55.4 W/Adventives	B-Forb	1	0.70%	B-Forb	6	4.00%
-0.8 NATIVE MEAN W	A-Forb	4	2.70%	A-Forb	2	1.30%
-0.3 W/Adventives	P-Grass	10	6.70%	P-Grass	4	2.70%
AVG: Faculative (+)	A-Grass	0	0.00%	A-Grass	0	0.00%
	P-Sedge	19	12.80%	P-Sedge	0	0.00%
	A-Sedge	0	0.00%	A-Sedge	0	0.00%
	Fern	5	3.40%			

ACRONYM	C	SCIENTIFIC NAME	W	WETNESS	PHYSIOGNOMY	COMMON NAME
ABIBAL		3 Abies balsamea	-3	FACW	Nt Tree	BALSAM FIR
ACERUB		1 Acer rubrum	0	FAC	Nt Tree	RED MAPLE
ACHMIL		1 Achillea millefolium	3	FACU	Nt P-Forb	YARROW
ACTPAC		7 Actaea pachypoda	5	UPL	Nt P-Forb	DOLL'S EYES
AGRTRA		8 Agropyron trachycaulum	0	FAC	Nt P-Grass	SLENDER WHEAT GRASS
ARGGIG		0 AGROSTIS GIGANTEA	0	FAC	Ad P-Grass	REDTOP
ANAMAR		3 Anaphalis margaritacea	5	UPL	Nt P-Forb	PEARLY EVERLASTING
ANDSCO		5 Andropogon scoparius	3	FACU	Nt P-Grass	LITTLE BLUESTEM GRASS
AQUCAN		5 Aquilegia canadensis	1	FAC-	Nt P-Forb	WILD COLUMBINE
ARANUD		5 Aralia nudicaulis	3	FACU	Nt P-Forb	WILD SARSAPARILLA
ARCUVA		8 Arctostaphylos uva-ursi	5	UPL	Nt Shrub	BEARBERRY
ASTLAN		2 Aster lanceolatus	-3	FACW	Nt P-Forb	EASTERN LINED ASTER
ASTMAC		4 Aster macrophyllus	5	UPL	Nt P-Forb	BIG LEAVED ASTER
ASTUMB		5 Aster umbellatus	-3	FACW	Nt P-Forb	TALL FLAT TOP WHITE ASTER
BETPAP		2 Betula papyrifera	2	FACU+	Nt Tree	PAPER BIRCH
BOTVIR		5 Botrychium virginianum	3	FACU	Nt Fern	RATTLESNAKE FERN

BRIMED	0 BRIZA MEDIA	0 FAC	Ad P-Grass	QUAKING GRASS
CACPLA	10 Cacalia plantaginea	0 FAC	Nt P-Forb	TUBEROUS INDIAN PLANTAIN
CALCAN	3 Calamagrostis canadensis	-5 OBL	Nt P-Grass	BLUE JOINT GRASS
CALINE	8 Calamagrostis inexpansa	-4 FACW+	Nt P-Grass	BOG REEDGRASS
CALARK	10 Calamintha arkansana	-3 FACW	Nt P-Forb	LOW CALAMINT
CAMROT	6 Campanula rotundifolia	1 FAC-	Nt P-Forb	HAREBELL
CXCAPI	9 Carex capillaris	-3 FACW	Nt P-Sedge	SEDGE
CXCAST	6 Carex castanea	-4 FACW+	Nt P-Sedge	SEDGE
CXCONC	10 Carex concinna	2 FACU+	Nt P-Sedge	BEAUTY SEDGE
CXDEWE	3 Carex deweyana	4 FACU-	Nt P-Sedge	SEDGE
CXEBUR	7 Carex eburnea	4 FACU-	Nt P-Sedge	SEDGE
CXFLAV	4 Carex flava	-5 OBL	Nt P-Sedge	SEDGE
CXGRAN	2 Carex granularis	-4 FACW+	Nt P-Sedge	SEDGE
CXPEDU	5 Carex pedunculata	5 UPL	Nt P-Sedge	SEDGE
CXSTER	10 Carex sterilis	-5 OBL	Nt P-Sedge	SEDGE
CXSTRI	4 Carex stricta	-5 OBL	Nt P-Sedge	SEDGE
CXTRIS	9 Carex trisperma	-5 OBL	Nt P-Sedge	SEDGE
CXVIRI	4 Carex viridula	-5 OBL	Nt P-Sedge	SEDGE
CXVULP	1 Carex vulpinoidea	-5 OBL	Nt P-Sedge	SEDGE
CASCOC	8 Castilleja coccinea	0 FAC	Nt A-Forb	INDIAN PAINTBRUSH
CENMAU	0 CENTAUREA MACULOSA	5 UPL	Ad B-Forb	SPOTTED BLUET
CHRLEU	0 CHRYSANTHEMUM LEUCANTHEMUM	5 UPL	Ad P-Forb	OX EYE DAISY
CIRMUT	6 Cirsium muticum	-5 OBL	Nt B-Forb	SWAMP THISTLE
CIRVUL	0 CIRSIUM VULGARE	4 FACU-	Ad B-Forb	BULL THISTLE
CLAMAR	10 Cladium mariscoides	-5 OBL	Nt P-Sedge	TWIG RUSH
CLIVUL	3 Clinopodium vulgare	5 UPL	Nt P-Forb	WILD BASIL
COMUMB	5 Comandra umbellata	3 FACU	Nt P-Forb	BASTARD TOADFLAX
CONCAN	0 Conyza canadensis	1 FAC-	Nt A-Forb	HORSEWEED
CORCAA	6 Cornus canadensis	0 FAC	Nt Shrub	BUNCHBERRY
CORRUG	6 Cornus rugosa	5 UPL	Nt Shrub	ROUND LEAVED DOGWOOD
CRYCAN	2 Cryptotaenia canadensis	0 FAC	Nt P-Forb	HONEWORT
CYCAPU	5 Cypripedium calceolus var. pubescens	-1 FAC+	Nt P-Forb	LARGE YELLOW LADY'S SLIPPER
DANSPI	4 Danthonia spicata	5 UPL	Nt P-Grass	POVERTY GRASS; OATGRASS
DAUCAR	0 DAUCUS CAROTA	5 UPL	Ad B-Forb	QUEEN ANNE'S LACE
DESCES	9 Deschampsia cespitosa	-4 FACW+	Nt P-Grass	HAIR GRASS
DIELON	4 Diervilla lonicera	5 UPL	Nt Shrub	BUSH HONEYSUCKLE
ELAUMB	0 ELAEAGNUS UMBELLATA	3 FACU	Ad Shrub	AUTUMN OLIVE
EPIHEL	0 EPIPACTIS HELLEBORINE	5 UPL	Ad P-Forb	HELLEBORINE
EQUARV	0 Equisetum arvense	0 FAC	Nt Fern Ally	COMMON HORSETAIL
ERISTR	4 Erigeron strigosus	1 FAC-	Nt P-Forb	DAISY FLEABANE
EUPMAM	4 Eupatorium maculatum	-5 OBL	Nt P-Forb	JOE PYE WEED
EUPPER	4 Eupatorium perfoliatum	-4 FACW+	Nt P-Forb	COMMON BONESET
EUPESU	0 EUPHORBIA ESULA	5 UPL	Ad P-Forb	LEAFY SPURGE
EUTGRA	3 Euthamia graminifolia	-2 FACW-	Nt P-Forb	GRASS LEAVED GOLDENROD
FESSUB	5 Festuca subverticillata	2 FACU+	Nt P-Grass	NODDING FESCUE
FRAVIR	2 Fragaria virginiana	1 FAC-	Nt P-Forb	WILD STRAWBERRY

FRAAME	5 Fraxinus americana	3 FACU	Nt Tree	WHITE ASH
GEOLIV	9 Geocaulon lividum	-2 FACW-	Nt P-Forb	GEOCAULON
GYMDRY	5 Gymnocarpium dryopteris	0 FAC	Nt Fern	OAK FERN
HALDEF	7 Halenia deflexa	0 FAC	Nt A-Forb	SPURRED GENTIAN
HYPKAL	10 Hypericum kalmianum	-2 FACW-	Nt Shrub	KALM'S ST. JOHN'S WORT
HYPPER	0 HYPERICUM PERFORATUM	5 UPL	Ad P-Forb	COMMON ST. JOHN'S WORT
IRILAC	9 Iris lacustris	0 FAC	Nt P-Forb	DWARF LAKE IRIS
IRIVER	5 Iris versicolor	-5 OBL	Nt P-Forb	WILD BLUE FLAG
JUNBAL	4 Juncus balticus	-5 OBL	Nt P-Forb	RUSH
JUNDUD	1 Juncus dudleyi	0 FAC	Nt P-Forb	DUDLEY'S RUSH
JUNHOR	10 Juniperus horizontalis	1 FAC-	Nt Shrub	CREEPING JUNIPER
LARLAR	5 Larix laricina	-3 FACW	Nt Tree	TAMARACK
LILPHI	10 Lilium philadelphicum	1 FAC-	Nt P-Forb	WOOD LILY
LINBOR	6 Linnaea borealis	0 FAC	Nt P-Forb	TWINFLOWER
LITLAT	10 Lithospermum latifolium	5 UPL	Nt P-Forb	BROAD LEAVED PUCCOON
LOBKAL	10 Lobelia kalmii	-5 OBL	Nt P-Forb	BOG LOBELIA
LOBSIP	4 Lobelia siphilitica	-4 FACW+	Nt P-Forb	GREAT BLUE LOBELIA
LONCAN	5 Lonicera canadensis	3 FACU	Nt Shrub	AMERICAN FLY HONEYSUCKLE
LYCAME	2 Lycopus americanus	-5 OBL	Nt P-Forb	COMMON WATER HOREHOUND
MAICAC	4 Maianthemum canadense	0 FAC	Nt P-Forb	CANADA MAYFLOWER
MEDLUP	0 MEDICAGO LUPULINA	1 FAC-	Ad A-Forb	BLACK MEDICK
MELALB	0 MELILOTUS ALBA	3 FACU	Ad B-Forb	WHITE SWEET CLOVER
MENPIP	0 MENTHA PIPERITA	-5 OBL	Ad P-Forb	PEPPERMINT
MITREP	5 Mitchella repens	2 FACU+	Nt P-Forb	PARTRIDGE BERRY
MUHGLO	10 Muhlenbergia glomerata	-4 FACW+	Nt P-Grass	MARSH WILD TIMOTHY
MYRGAL	6 Myrica gale	-5 OBL	Nt Shrub	SWEET GALE
ORYASP	6 Oryzopsis asperifolia	5 UPL	Nt P-Grass	ROUGH LEAVED RICE GRASS
PARGLA	8 Parnassia glauca	-5 OBL	Nt P-Forb	GRASS OF PARNASSUS
PETPAL	10 Petasites palmatus	-3 FACW	Nt P-Forb	SWEET COLTSFOOT
PHLPRA	0 PHLEUM PRATENSE	3 FACU	Ad P-Grass	TIMOTHY
PICGLA	3 Picea glauca	3 FACU	Nt Tree	WHITE SPRUCE
PICMAR	6 Picea mariana	-3 FACW	Nt Tree	BLACK SPRUCE
PINSTR	3 Pinus strobus	3 FACU	Nt Tree	WHITE PINE
POACOM	0 POA COMPRESSA	2 FACU+	Ad P-Grass	CANADA BLUEGRASS
POLPAU	7 Polygala paucifolia	3 FACU	Nt P-Forb	GAY WINGS
POPBAL	2 Populus balsamifera	-3 FACW	Nt Tree	BALSAM POPLAR
POPGRA	4 Populus grandidentata	3 FACU	Nt Tree	BIG TOOTHED ASPEN
POPTRE	1 Populus tremuloides	0 FAC	Nt Tree	QUAKING ASPEN
POTANS	5 Potentilla anserina	-4 FACW+	Nt P-Forb	SILVERWEED
POTFRU	10 Potentilla fruticosa	-3 FACW	Nt Shrub	SHRUBBY CINQUEFOIL
PRIMIS	10 Primula mistassinica	-3 FACW	Nt P-Forb	DWARF CANADIAN PRIMROSE
PRUVUL	0 PRUNELLA VULGARIS	0 FAC	Nt P-Forb	LAWN PRUNELLA
PRUVIR	2 Prunus virginiana	1 FAC-	Nt Shrub	CHOKE CHERRY
PTEAQU	0 Pteridium aquilinum	3 FACU	Nt Fern	BRACKEN FERN
PYRROT	7 Pyrola rotundifolia	1 FAC-	Nt P-Forb	ROUND LEAVED PYROLA
QUERUB	5 Quercus rubra	3 FACU	Nt Tree	RED OAK

RHAFRA	0 RHAMNUS FRANGULA	-1 FAC+	Ad Shrub	GLOSSY BUCKTHORN
RHYCAL	10 Rhynchospora capillacea	-5 OBL	Nt P-Sedge	BEAK RUSH
RUBODO	6 Rubus odoratus	5 UPL	Nt Shrub	FLOWERING RASPBERRY
RUBPUB	4 Rubus pubescens	-4 FACW+	Nt P-Forb	DWARF RASPBERRY
RUBSTR	2 Rubus strigosus	-2 FACW-	Nt Shrub	WILD RED RASPBERRY
RUDHIR	1 Rudbeckia hirta	3 FACU	Nt P-Forb	BLACK EYED SUSAN
SALCAN	9 Salix candida	-5 OBL	Nt Shrub	HOARY WILLOW
SALDIS	1 Salix discolor	-3 FACW	Nt Shrub	PUSSY WILLOW
SALEXI	1 Salix exigua	-5 OBL	Nt Shrub	SANDBAR WILLOW
SALPET	1 Salix petiolaris	-4 FACW+	Nt Shrub	SLENDER WILLOW
SARPUP	10 Sarracenia purpurea	-5 OBL	Nt P-Forb	PITCHER PLANT
SCHPUP	5 Schizachne purpurascens	2 FACU+	Nt P-Grass	FALSE MELIC
SCHACU	5 Schoenoplectus acutus	-5 OBL	Nt P-Sedge	HARDSTEM BULRUSH
SCHPUN	5 Schoenoplectus pungens	-5 OBL	Nt P-Sedge	THREE SQUARE
SCIATR	3 Scirpus atrovirens	-5 OBL	Nt P-Sedge	BULRUSH
SELECL	5 Selaginella eclipses	-4 FACW+	Nt Fern Ally	SELAGINELLA
SENPAU	3 Senecio pauperculus	-1 FAC+	Nt P-Forb	BALSAM RAGWORT
SHECAN	7 Shepherdia canadensis	5 UPL	Nt Shrub	SOAPBERRY
SMISTE	5 Smilacina stellata	1 FAC-	Nt P-Forb	STARRY FALSE SOLOMON SEAL
SOLCAN	1 Solidago canadensis	3 FACU	Nt P-Forb	CANADA GOLDENROD
SOLNEM	2 Solidago nemoralis	5 UPL	Nt P-Forb	OLD FIELD GOLDENROD
SOLOHI	8 Solidago ohioensis	-5 OBL	Nt P-Forb	OHIO GOLDENROD
SOLPTA	6 Solidago ptarmicoides	5 UPL	Nt P-Forb	UPLAND WHITE GOLDENROD
SOLRUG	3 Solidago rugosa	-1 FAC+	Nt P-Forb	ROUGH GOLDENROD
SOLULI	4 Solidago uliginosa	-5 OBL	Nt P-Forb	BOG GOLDENROD
SONARV	0 SONCHUS ARVENSIS	1 FAC-	Ad P-Forb	PERENNIAL SOW THISTLE
SPICER	4 Spiranthes cernua	-2 FACW-	Nt P-Forb	NODDING LADIES' TRESSES
SPIROM	10 Spiranthes romanzoffiana	-4 FACW+	Nt P-Forb	HOODED LADIES' TRESSES
STEMED	0 STELLARIA MEDIA	3 FACU	Ad A-Forb	COMMON CHICKWEED
THUOCC	4 Thuja occidentalis	-3 FACW	Nt Tree	ARBOR VITAE
TOFGLU	10 Tofieldia glutinosa	-5 OBL	Nt P-Forb	FALSE ASPHODEL
TOXRAR	2 Toxicodendron radicans	-1 FAC+	Nt W-Vine	POISON IVY
TRADUB	0 TRAGOPOGON DUBIUS	5 UPL	Ad B-Forb	GOAT'S BEARD
TRICES	10 Trichophorum cespitosum	-5 OBL	Nt P-Sedge	BULRUSH
TRIBOR	5 Trientalis borealis	-1 FAC+	Nt P-Forb	STARFLOWER
TRIREF	0 TRIFOLIUM REPENS	2 FACU+	Ad P-Forb	WHITE CLOVER
TRIMAR	8 Triglochin maritimum	-5 OBL	Nt P-Forb	COMMON BOG ARROW GRASS
UTRCOR	10 Utricularia cornuta	-5 OBL	Nt A-Forb	HORNED BLADDERWORT
VERTHA	0 VERBASCUM THAPSUS	5 UPL	Ad B-Forb	COMMON MULLEIN
VIOADU	4 Viola adunca	1 FAC-	Nt P-Forb	SAND VIOLET
VIOREN	6 Viola renifolia	-3 FACW	Nt P-Forb	KIDNEY LEAVED VIOLET