



THE BINGHAM FARMS POST

Spring, 2016

Upcoming Village Elections

By now, everyone is pretty much aware that we have elections coming up in November.

While residents seem to be baraged every day with advertisements about the Presidential candidates, Bingham Farms will have its own local election for Village Council.

November elections are just over seven months away, anyone interested in entering our local elections needs to be aware of the filing dates in order to appear on that November ballot.

There are three Council seats up for election this November. Each candidate must file a Nomination Petition (requiring a minimum of 15 and no more than 20 voter eligible signatures). These petitions are due at Southfield Township by 4:00 p.m. on July 26, 2016. An affidavit of Identity also must be filed at the same time.

Qualifications to run for a Council seat are:

- Must be 25 years of age
- A citizen of the United States

A resident in the Village and An owner of real property.

The Village Council usually meets on the fourth Monday of the month at 7:30 p.m.. On occasion there may be a need to call a special Council meeting.

However, if you are not interested in running for a local office, perhaps you would consider becoming an election inspector. This would be just a one day commitment plus a training session.

Southfield Township, which runs all the elections, is always looking for good people to work at precincts during an election. While the day may be long, the benefit to your community is great.

Call Clerk Sharon Tischler at Southfield Twp. for more information. The number is 248.540.3420.



Living with Coyotes

The sightings of coyotes have increased over the past year and many residents are alarmed. They fear for their pets and their children.

Last fall, a seminar was held at the Franklin Community Church by Naturalist Educator Laurel Zoet. She talked about the history, the myths and the facts about one of North America's most **highly adaptable** animals.

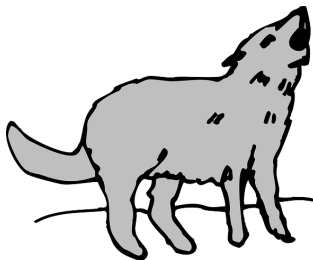
Coyote sightings have been reported in cities and suburbs throughout the United States. These sightings are becoming

more frequent as coyotes search for acceptable habitat in a more developed environment.

There are steps residents can take to protect their pets and children.

1. Do not leave dog or cat food outside. This is an attractive nuisance and will attract coyotes.
2. If you have small children or small pets, keep a vigilant eye on them.
3. Do not approach a coyote.

See Pages 5 & 6 for an in-depth look at this animal.



Large Item Pick Up Scheduled

Get ready. The Village's semi-annual, free, large item pick up is set for **Thursday, June 2nd**. All items should be at the street by 7:00 a.m. Large bulky items may be placed at the street the weekend before the pick up.

For new residents, the Village contracts with its rubbish contractor twice a year to haul away large items that normally are not included in the regular Thursday pick up.

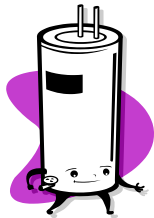
This includes sofas, washing machines and hot water heaters.

It does not mean that it's time to clean out all the rubbish stored in your home. In the past, residents who were moving out of their home figured they could put everything out at the street. One resident had boxes and rubbish lined all along the street and half way down the driveway.

Car Trucking has the authority to bypass homes that have an excessive amount of rubbish. If you are in need of a roll-off, call Car Trucking.

Should you have any questions, please feel free to contact the Village office or Car Trucking at 586.791.8480 to avoid any problems on the big day.

See Pg. 13 for more information.



VILLAGE COUNCIL MEETING DATES

April 25
May 23
June 27

All meetings start at 7:30 p.m.

Check Contractors Working in your Home

The Franklin - Bingham Farms Police Department has noted an increase in reported thefts allegedly conducted by workers who are completing jobs inside homes.

Recently there were investigated incidents where construction workers, maintenance personnel and domestic helpers have allegedly stolen property from inside the homes of Bingham Farms residents.

The Department would like to remind everyone that, before hiring a contractor, please check with your neighbors and the Better Business Bureau (<http://detroit.bbb.org>) for references. Also call the Southfield Building Dept. (248.796.4100) to make sure that the contractor is licensed, that he has pulled the proper permits and that the work is set up for the required inspections.

Note that in Bingham Farms, construction cannot begin before 7:00 AM and must stop at dusk.

Finally, take some simple actions to secure your valuables when workers are in your home; such as locking up jewelry, currency and other valuable items so that they are not visible and not easily stolen.



Library Notes

Bring the Baldwin Library home with you and enjoy access to downloadable ebooks, audiobooks, magazines, television shows, movies, music, and research databases with your BPL card. Learn a new language with Mango Languages. Keep track of stocks and investments with ValueLine and Morningstar. Learn new skills and software programs with lynda.com's thousands of professional video tutorials. To access these, visit www.baldwinlib.org and click on Research.

Baldwin also offers a wide variety of programs for all ages. On April 7, at 2:00 p.m., the Michigan Opera Theatre will present "How Nanita Learned to Make Flan." This children's opera will take place at The Community House. Then, on May 14 at 10:30 a.m., Dan the Creature Man will introduce children to his fascinating and diverse collection of animals.

Special programs for teens include a two part hair braiding series on April 14 and 21 at 7:00 p.m., a hands-on Bicycle Maintenance workshop on May 19 at 6:30 p.m., and a Henna Body Art session on May 26 at 7:00 p.m.

On April 6, at 7:00 p.m., Drew Lathin will talk about the beauty and value of using native plants in landscaping. Travel south and enjoy an Antarctic travelogue as Paul C. Daniels talks about his experience living at the U.S. Antarctic research station "South Pole" on April 23 at 3:00 p.m. Art lovers will enjoy Wendy Evans's lecture on the life of Annie Liebovitz on May 25 at 7:00 p.m.

Visit the Friends of the Library Spring Book Sale for great deals on books and media for all ages. The sale runs from Friday, April 29 (Member Preview Night) to Monday, May 2.

More details are available at www.baldwinlib.org/friends.

Watch Out for the Latest Scams

About this time every year, law enforcement agencies across the country receive several complaints involving tax fraud schemes. This is also true for the Franklin - Bingham Farms Police Department, as some of our village residents have fallen victim to various tax fraud schemes. These types of crime are relatively easy to commit and are low-risk for the perpetrators.

Virtually anyone with a Social Security number could become a victim. But criminals who commit tax refund fraud seem to focus more on the elderly, low-income families, students, patients at long-term health care facilities, and even the homeless. Perpetrators also target public figures like celebrities, athletes, CEOs, and politicians, as well as law enforcement, military, and government personnel.

Most of the time, the fraud scheme involves a perpetrator who fills out a federal tax return online with stolen identity information and phony wage and tax withholding figures, then informs the IRS how to provide the refund (a check mailed to a certain address, a direct deposit into a bank account he controls, or, more common these days, a deposit onto a debit card in his possession).

Typically, these schemes are committed by a lone individual; however, the FBI and IRS have conducted investigations into more sophisticated tax fraud schemes, where entire criminal organizations are involved. In the more complex cases, the criminal organizations have established roles and responsibilities for all of the perpetrators in their group. For example, some perpetrators may be tasked with stealing identity information, while others are assigned as tax preparers or runners.

Often, a victim will not even know that their identity has been stolen until they file their income tax return with the IRS. In reports that our police department have taken, the victims were

Cont'd on Pg. 3

**LARGE ITEM PICK UP
JUNE 2, 2016**

**ALL ITEMS TO THE
STREET BY
7:00 A.M.**

See Pg. 13 for details

Cont'd on Pg. 7

President's Letter

My family has lived in Bingham Farms for 23 years. We raised two sons, made some great friends, and enjoy walks with our dogs, Sasha and Ranger. They are twelve years old, brother and sister Huskies.

Why is Bingham Farms awesome? While I do not discount the natural beauty and low taxes, the beautiful homes and city water/city sewer, the answer is the people.

We have good neighbors. The Mobile Watch is an unpaid community organization that covers its costs with donations. Some of us make non-tax deductible contributions to the Franklin Police Officers' Association (we share police and fire with Franklin) which does kind things like help support fallen officer's families. When it appeared as though I was having a heart attack twenty years ago, a police officer was at my home examining me in under two minutes and there were more volunteer fire fighters in my driveway than I could count. When a child went missing in Beverly Hills a young officer personally walked through the woods behind the homes in my neighborhood as part of the search.

A lot of us volunteer our time to serve in municipal government. The Village operates with a minimal paid staff. The Village Clerk, Kathy

Hagaman, is a resident and does the work that most cities have multiple departments to handle the workload.

I was going to write about taxes but something happened today to remind me of what it means to live here. We are repainting the interior of our house. After all the years we've lived in the house, it needs the work. The painters like our dogs, and our dogs like the painters, but Huskies are escape artists. They can vault a five foot fence, dig under a fence that lacks additional ground protection (e.g., several feet of staked wire mesh inspected regularly), and open a gate that is not locked. Today they slipped out the front door with no one the wiser, each on a separate walkabout.

Fellow residents spotted them, used the information on their Southfield Dog Licenses and a vanity tag, and brought them home safely to us before I even knew they were missing. Sasha and Ranger are family, we love them, and we gratefully thank all of you for making Bingham Farms wonderful.

Sincerely,

Jeffrey D. Modell, Esq.
Village President

Voter Turnout High For March Primary

No one can say that voters in Franklin, Bingham Farms and Beverly Hills were not interested in the March 8th Presidential Primaries.

Southfield Township released some very interesting statistics.

- 6,021 voters cast their ballots, about 52% of registered voters.
- 1,644 absent voter ballots were issued with 1,513 returned or 92%
- There were 3,393 Republican voters
- There were 2,628 Democratic voters
- The above equates to 56% Republican voters to 44% Democratic

The total voter turnout of 52% was a substantial increase over voter turnout in 2012 when 31% of voters turned out to vote in a primary..

Mark your calendars as there will be another primary in August for voters to choose other federal state and local candidates.

The General Election will be held in November,

Scams Cont'd. from Pg. 2

notified that the IRS had already received tax returns in their name and they had provided refunds using our residents identifying information. The IRS has a process that they utilize to handle complaints of tax fraud, so please consult the following website should you find that you have become victim of this type of crime:

<http://www.irs.gov/uac/Taxpayer-Guide-to-Identity-Theft>

Finally, there are a few things you can do to help protect against identity theft. It should be noted that it is

nearly impossible to guard against all types of identity theft; however, there are some things you can do to minimize the risk.

1. Check your credit report on a regular basis to ensure that no additional credit cards, loans or other accounts have been established in your name.
2. Be sure to shred your sensitive documents, or find some other way to dispose of them so that they don't end up in the normal trash can.
3. Protect your Social Security Number and your Social Security Card. Don't give your Social Security Number to those who don't need it, and don't carry your card around in your wallet or purse.

4. Be particularly careful not to give out your Social Security Number and other information on websites and social media sites, unless absolutely necessary. It is widely known that identity thieves use the Internet to obtain personally identifiable information from victims. And, related to this, make sure your computer has up-to-date anti-virus software.

If you feel that you have been the victim of identity fraud, feel free to contact the Franklin - Bingham Farms Police Department at (248) 626-5444 and our officers will take a report to document the incident.

Franklin-Bingham Farms Police Keeping the Villages Safe

The Franklin Bingham Police Officers are regularly seen cruising the streets of Franklin and Bingham Farms.

A major question might be what else do they do.

Police Chief Dan Roberts recently released statistics regarding police activity in both Bingham Farms and Franklin in 2015.

1. **1866 tickets** were written (a 28% increase over 2014).

3. **3509 Calls for Service** (down 2% from 2014)

5. **157 misdemeanor arrests** were made, up 14%.

6. **14 Felony arrests were made**, up 75%.

There were 3 Residential Break-ins & Enterings in 2015, all in a condominium complex.



State Rep. Holds Coffee Hours

The new State Representative, for Bingham Farms, Jeremy Moss, has set coffee hours for residents to meet with him and his staff.

It's an informal setting so residents can ask questions about pending legislation, get more information on state government or offer ideas and solutions for matters facing our state or local community.

Rep. Moss will be holding a coffee hour from 5:30 - 7:00 p.m. on

April 27th

May 18th

June 15th

in the 3rd floor Boardroom of the Southfield Public Library located at 26300 Evergreen Rd.

Bingham Farms Fire Department Releases Year-End Stats

The Franklin Bingham Fire Department has released its 2015 annual response report.

Last year, the fire department responded to 463 incidents, down from a high of 577 in 2014.

Here's the breakdown by classification.

Fires - 9

EMS - 254

Hazardous Conditions - 52

False Alarms/Cancelled - 104

Others - 44

The Department is staffed with 2 full time crew, Fire Chief Tony Averbuch and Lt. Tim Adams. The remainder of the staff are volunteers who use their free time to make sure residents and building owners' property are fully covered when an emergency arises.



These volunteer firefighters are totally trained just like full time, paid firefighters. Their generosity is incredible.

Total personnel station time committed was 3,369 hours down from 4,450 hours last year.

The average response time was 4.35 minutes versus 4.37 minutes in 2014. Any changes from prior year can be attributed to what time of day the calls came in, whether there are simultaneous calls or firefighters are already on the scene of another call, etc.

The Department is always looking for people to volunteer. To find out more, please call **248.626.9862** or visit online at **www.fbfd.com**.

Voter Registration Deadlines For Upcoming

If you recently moved into the Village or you are a new voter, the time is now for registering to vote in the upcoming elections.

August Primary - register by July 5th

November Election - register by October 11th.

You may register at any Secretary of State office or at Southfield Twp. which is located at 18550 W. Thirteen Mile Rd.

Any questions, call Clerk Sharon Tischler at 248.540.3420.

Check the Rules Before Starting a Project

Before starting any project in your house or on your property, check with the Village first to see whether your project may need a permit or whether what you want to do is even allowed.

This quick call can save you time and money in the long run.

Some residents would like to put up a fence. The only fences allowed in the Village are to enclose a swimming pool and must be 4' in height.

Sheds need the approval of the Design Review Board. A permit must be pulled from the City of Southfield Building Dept. They are the Village's building inspectors.

Save yourself some time and money. Call the Village at 248.644.0044 before you start anything on the outside of your home.

Michigan Department of Natural Resources
Wildlife



Michigan Coyote Facts

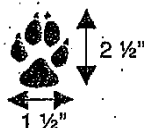
Where can you find coyotes in Michigan?

Coyotes are found throughout the state. They are most abundant in the Upper and northern Lower Peninsulas. Coyote numbers decrease in the central and southern portions of the Lower Peninsula. Coyotes have dispersed into southern Michigan without assistance from the DNR.

This member of the dog family is extremely adaptable and survives in virtually all habitat types common in Michigan. They are most abundant in areas where adequate food, cover, and water are available. Urban areas can also support coyotes. The size of a coyote's home range depends on the food and cover resources available and on the number of other coyotes in an area, but it generally averages between 8 and 12 square miles. Mated pairs and 4-7 recently born pups occupy the home range during the spring and summer seasons in Michigan.

How do I distinguish a coyote from other dog species?

Coyotes can be difficult to distinguish from a medium-sized German shepherd dog from a distance. There is wide variation in the coyote's color, but generally their upper body is yellowish gray, and the fur covering the throat and belly is white to cream color. The coyote's ears are pointed and stand erect, unlike the ears of domestic dogs that often droop. When observed running, coyotes carry their bushy, black-tipped tail below the level of their back. Wolves, which are found in Michigan's Upper Peninsula, are larger than coyotes and carry their tail in a horizontal position while running. The size and weight of coyotes are commonly overestimated, because their long fur masks a bone structure that is slither than that of most domestic dogs.



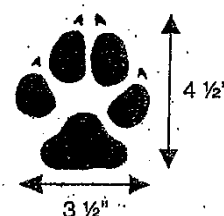
Coyote (*Canis latrans*)

Height: 18" maximum

Length: 4.3 feet maximum; 2.8 feet average

Weight: 25-45 pounds

Present range in Michigan: Statewide



Gray Wolf (*Canis lupus*)

Height: 30" average

Length: 4.5 feet to 6.5 feet

Weight: 50 to 100 pounds; average is 65

Present range in Michigan: Upper Peninsula

When are coyotes most likely to be seen?

People are most likely to see coyotes during their breeding period, which occurs in Michigan from mid-January into March. As fall approaches, pups begin dispersing from the den site to establish home ranges of their own. These young dispersing animals sometimes wander into urban areas. Coyotes are active day and night; however, peaks in activity occur at sunrise and sunset. Coyotes generally feed at night.

What is the life expectancy of a coyote?

Coyotes can often live six to eight years in the wild. Various forms of natural mortality include disease, predation, and starvation. However, hunting, trapping, and vehicle collisions are common causes of coyote mortality. Approximately 50-70% of juvenile coyotes do not reach adulthood. Annual adult mortality averages 30-50%. Coyotes can compensate for severe reductions in population numbers by breeding at younger ages and by having larger litters.

What do coyotes eat?

Coyotes are opportunistic and will eat almost anything available. Small mammals such as mice, voles, shrews, rabbits, hares, and squirrels are preferred foods. However, insects, fruits, berries, birds, frogs, snakes, plants, and seeds round out their diet. In areas with high deer numbers, carrion resulting from vehicle-deer collisions, natural causes, and crippling losses is an important source of food. In urban areas, coyotes are attracted to garbage, garden vegetables, and pet foods. They will also prey on unattended small dogs and cats, if opportunities exist. Some coyotes learn to kill smaller livestock, such as sheep, goats, calves, and poultry. Larger animals are almost always consumed as carrion.

Do coyotes present any danger to people?

Coyotes rarely attack humans. Bites from snakes, rodents, and domestic dogs are a far greater possibility than coyote bites, according to public health authorities. Coyotes that are fed become accustomed to people and present a human safety risk. People should never intentionally feed or attempt to tame coyotes. It is in the best interest of both coyotes and humans if coyotes retain their instinctive fear of people. The following important points can help minimize potential conflicts with coyotes:

- Never approach or touch a coyote
- Never intentionally feed a coyote
- Eliminate all outside food sources, especially pet foods
- Put garbage out the morning of pickup day
- Clear out wood and brush piles; they are good habitat for rats and mice and may attract coyotes
- Good husbandry practices, guard animals, and coyote control measures can help to protect livestock
- Do not allow pets to roam free when coyotes are present
 - Consider keeping pets indoors or accompany them outside

Who should I contact if I have coyote depredation problems?

The following agencies or businesses can be contacted for advice or assistance if coyote depredation becomes a problem:

United States Department of Agriculture, Wildlife Services
Michigan Department of Natural Resources
Animal Damage Control Businesses
County Animal Control Units

For additional information on coyotes, please visit our web site at www.michigan.gov/dnr, Wildlife Services web site at www.aphis.usda.gov/ws, or visit your local library.

Friends of the Rouge Upcoming Events

For thirty years Friends of the Rouge have been working to restore the Rouge River. These years of service have definitely paid off.

Fish are returning to the Rouge, a healthy wildlife is being established. This is no small feat.

Each year, the group sponsors a River Clean Up Day throughout the Rouge Watershed, which includes Bingham Farms.

As the Village has no public access to the Rouge River or its tributaries, Beverly Hills and Birmingham usually sponsor a Rouge River Day clean up and would most likely welcome the extra help.

This year it will take place on Saturday, May 21st. Check with each municipality for more particulars.

Another event the Friends sponsor is the Annual Bug Hunt, which will take place on April 16th. More information may be found at

www.therouge.org



Library News Cont. from Pg. 2

Be sure to sign up for this year's Summer Reading program. Join us for our Annual Summer Reading Open House on Friday, June 17 from 1 to 4:00 p.m.

Find more information about the Library and its programs at www.baldwinlib.org.

Vials of Life For Seniors

The Franklin Bingham Fire Department has put together a small plastic bottle, the contents of which will aid them to properly respond to a senior medical emergency.

The vial holds valuable medical information for a resident. It includes an information sheet and 2 personal profile sheets that hold critical information regarding medical history and current medications. Fill out the profile sheet, place the vial in the freezer and make sure it is easily visible when the freezer door is opened.

The vial also contains 2 display magnets that alert first responders that you have a Vial of Life completed. Place one magnet on your refrigerator door. Place the sticker adjacent to the a window by the front door.

The Vial of Life is available at the Village office. Stop by and pick one up.

These vials can shave off minutes for first responders trying to assess your medical situation in an emergency.



Having a Graduation Party - Play It Safe

Senior Prom and graduation are landmark events in most teenagers' lives. Though these two special moments symbolize both maturity and pending adulthood, parents must remember that when it comes to drinking, teens are still legally underage.

The Birmingham Bloomfield Community Coalition along with the other Oakland County coalitions are again launching the "Parents Who Host, Lose the Most: Don't be a party to underage drinking" public awareness campaign. It is designed to help parents consider the dangers of teenage drinking parties.

Simply stated: Parents who provide alcohol to their children's friends under any circumstances, even in their own homes, are breaking the law; parents who knowingly allow a person under 21 to remain in their home or on their property while consuming or possessing alcoholic beverages can be prosecuted; and parents can be sued if they give alcohol to anyone under 21 and they in turn hurt someone, hurt themselves or damage property.



Road Commission Construction in Full Swing

As most folks are aware, getting around this summer is not going to be easy. While most of the construction is outside the immediate Bingham Farms area, it's not going to be easy getting into Birmingham.

Big Beaver, from Woodward to Coolidge will be closed through the summer for utility, drainage and road improvements. Granted this road was in dire need of reconstruction. The number of flat tires would tell the



story due to the number of potholes in the roadway.

Further South, Fourteen Mile Road from Woodward to Coolidge will also be on the major road work list. Drivers will have to find alternate routes to Meijer's and the SOCRRA facility on Coolidge.

The best advice is to add extra time for your trips and avoid rush hour traffic.

The Fight Continues Against The West Nile Virus

It appears that Michigan, along with just about every other state continues to battle infected mosquitoes that cause West Nile Virus. While the numbers have decreased compared to last year, the problem remains.

In 2015 there were just 18 cases of human infections, 3 of those in Oakland County. This includes 2 deaths, one of which was in Oakland County.

The West Nile Virus is spread to humans when bitten by a mosquito that carries the virus.

It is important for every person to protect himself. The best defense is a good offense.

So take the following steps to lower your chances.

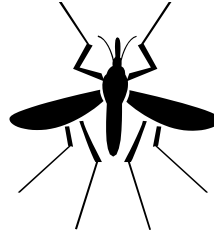
- ♦ **Reduce areas where mosquitoes breed,**
- ♦ **Repel to protect against mosquitoes, and**
- ♦ **Report potential mosquito breeding areas.**

Other measures that can reduce the risk of contracting the virus include:

- ♦ Repair all holes in windows and screens to keep mosquitoes out of your home.
- ♦ Empty water from mosquito breeding sites such as buckets, barrels, cans, old

tires, or similar sites.

- ♦ Avoid being outdoors when mosquitoes are most active (dawn and dusk).
- ♦ Wear light colored, long-sleeved shirts and long pants when outdoors.
- ♦ Apply insect repellents that contain the active ingredient DEET to exposed skin or clothing. Always follow the manufacturer's directions for use. Avoid applying repellent containing DEET on children less than two years of age.



Dead birds can also be an indicator of West Nile Virus infected mosquitoes are in the area. To report dead birds, call the Oakland County Health Division Hotline at 1.877.377.3641. Wear gloves to protect yourself from direct contact with the bird and dispose of it properly.

For updates on West Nile Virus, log on to:

www.michigan.gov/westnilevirus
or
www.oakgov.com.

Village Needs Help From Residents

The question on the minds of a number of residents is, who is littering the Village roadways? Unless one sees someone do it, it's impossible to track down the culprits.

So, what to do? This is one area where residents can help. When you are out and about, if you would pick up a few pieces of litter, it would be a great help. If everyone did this, the problem would be taken care of and the Village would look great.



If you should see someone toss anything, get a description of the vehicle and the license plate number. Call the police and relay the information.

The number for dispatch is 248.626.5444 and the police office is 248.626.9672.

Bits N Pieces

- Get email blasts from the Village office or the Police Department. Log on to the Village website, (www.binghamfarms.org) and click on the link "Stay Informed" at the bottom of the home page.
- Latex Paint is not a hazardous material. Use kitty litter to dry it up and dispose with regular trash.
- Village Tax Bills will be mailed out on June 30. They are due in the Village office by August 31st without penalty. **Postmarks are NOT accepted.**
- Have rubbish out at the street by 7:00 a.m. every Thursday morning.
- Fences are not allowed unless around a pool enclosure.
- Dog runs totaling no more than 250 sq. ft. and no more than 4-feet in height are allowed. Must get Council approval.

CELEBRATE
EARTH DAY
APRIL 22nd



**BINGHAM FARMS
RESIDENTS
FREE
HOUSEHOLD DOCUMENT
SHREDDING
AT
SOUTHFIELD TWP.
18550 W. 13 Mile Rd.
May 7, 2016
10:00 a.m. - 12:00 Noon**

Help Stop Illegal Dumping

Every year the Village picks up the tab to haul away debris dumped in the Village rights-of-way. It ranges from a truck full of old tires to wood chips to tree trunks.

If you see anything suspicious, such as a slow-moving, fully loaded truck, call police dispatch at **248.626.5444** immediately. Getting the license number or a description of the car or truck will help police track down the scofflaws.



If caught, the culprits face stiff fines, and must remove the debris or reimburse the Village for its costs to remove the materials.

HOW TO DISPOSE OF CFL & LED BULBS

Did you know that CFL & LED Light Bulbs contain hazardous materials? Did you know those burned out bulbs can be returned to mega stores such as Lowe's and Home Depot? And it's free disposal.

While the Village participates in a Household Hazardous Waste Program with SOCRRA (South Oakland Resource Recovery Authority) on Coolidge Highway, it costs the Village \$30 per car. Recently, a resident dropped off 3 of these bulbs. That's all. So the cost to the Village was \$30.



For economic reasons, please wait until you have a number of other products before dropping off light bulbs to SOCRRA.

Better yet, just bring them to a local Lowe's or Home Depot store and drop them in the recycling bin at any time and there is no charge.

Public Notice Noxious Weeds

It does not happen often, but there are times when property owners move away and the property is not maintained, especially mowing the grass. Grass that reaches a height of eight inches or more is considered a noxious weed.

Before the Village steps in to remove the violation, an annual notice is published in the Eccentric newspaper advising owners of the noxious weed ordinance. After the newspaper notice, the Village has the ability to act.

When an infraction occurs, a letter is sent to the property owner(s) giving them ten days to rectify the situation. If not resolved within that time period, the Village will contract with a landscape company to cut the lawn as many times as needed during the course of the season.

The notice reads:

"Pursuant to Section 95.36(A), the Village hereby publishes notice to property owners that noxious weeds existing on a property as of May 1, 2015 may be cut, mowed or removed by the Village, with the property owner charged with the Village's actual and administrative costs and expenses in doing so, as many times that calendar year as necessary to keep the property free from nox-

ious weeds.

Specifically, the Village will provide written notice to owners of property upon which noxious weeds exist, and to occupants and agents of said owners known to the Village: (i) to cut, mow or remove the noxious weeds within 10 days of the date of the notice, (ii) to thereafter maintain the property free from noxious weeds, (iii) that upon a failure or refusal to do so, that the Commissioner, by Village employees or contractors, will enter upon the property and perform the required cutting, mowing or removal, (iv) that payment of the Village's actual and administrative expenses incurred in cutting, mowing or removal is the responsibility of the property owners and is secured by a lien on the property, (v) that the existence of noxious weeds is a public nuisance and (vi) notice of any public nuisance hearing that may be scheduled before the Village Council under Section 95.08."



WANT TO BE INFORMED AND RECEIVE SPECIAL ALERTS?

**Register by way of the Village
website at:**

www.binghamfarms.org

Click on the "Stay Informed" link

**Receive warnings, water alerts,
police notices and more via
email.**

Sign up today.

STUDENTS, DO YOU NEED COMMUNITY

SERVICE HOURS?

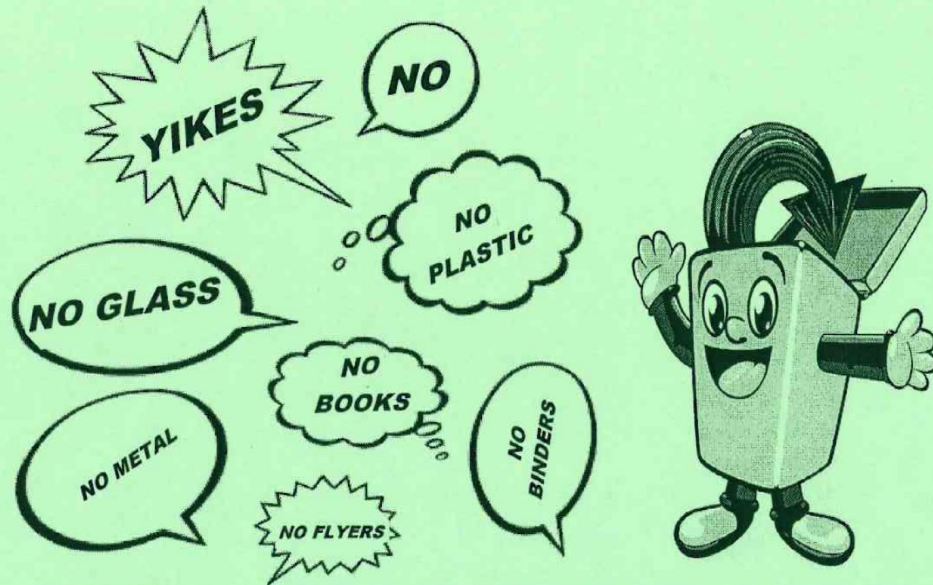
***We need volunteers to help pick
up trash along Village roads.***

Your hours, your schedule.

***Call the Village office for more
info.***

248.644.0044





SHRED- PAPER ONLY

PERSONAL, CONFIDENTIAL AND OR SENSITIVE
HOUSEHOLD DOCUMENTS ONLY
FOR FREE

SATURDAY, MAY 7, 2016
10 AM TO NOON

SOUTHFIELD TOWNSHIP PARKING LOT
18550 W. 13 MILE ROAD

WILL ACCEPT A MAXIMUM OF 3 STORAGE BOXES
PER HOUSEHOLD

GUIDELINES FOR DISPOSING OF LATEX PAINT

In response to questions regarding what to do with old latex paint, SOCRRA has developed a few simple guidelines. Latex paint is technically not a Household Hazardous Waste, but it is considered a liquid and therefore cannot be placed in with the trash. It must be turned into a solid. To do this, the paint must first be dried or hardened before it is disposed of in the trash, and the empty paint cans placed in the recycling bin. **Because oil-based paint contains dangerous solvents, it is important to remember that these procedures can only be used with latex paint.**

Natural Drying - With latex paint cans that are less than a quarter full, simply remove the lid and place the can in a well-ventilated area. The remaining paint should be dry within a few days. Once dry, the hardened paint can be chipped out and placed with the trash. The empty paint can, whether metal or plastic, should be placed in the recycling bin.



For paint cans that are more than a quarter full, you'll need:

Paint Hardener - You can pick up paint hardener at any local hardware or paint store. Once you have your paint hardener there are a few simple steps to follow:

1. Cover your work surface to protect it from paint splashes
2. Add a paint hardener to the can – read the directions on the packet to find out how much hardener you need to add. Typically one packet will harden up to 2/3rds of a gallon of paint.
3. Stir and mix thoroughly. After a few minutes, the paint will have a chunky, oatmeal-like texture.

You can now dispose of the dried paint in the trash. The empty paint can be placed in the recycling bin.

Kitty Litter - This common, household absorbent works well in removing the moisture from latex paint. How much kitty litter to add depends on the makeup and age of the latex paint. In most cases, start with a cup or two and add as needed. Stir thoroughly and after a short time, the paint will thicken. Dispose of the hardened material in the trash and recycle the empty paint cans.



Saw Dust, Mulch, Small Animal Bedding, & Sand – These are other common absorbents that can be used to thicken and solidify latex paint. Use them the same way you would use kitty litter. Remember to recycle empty paint cans **and lids** after disposing of the hardened paint.

Some general tips to consider before drying latex paint:

- To limit waste buy only what you need – ask at the paint stores, they are the experts!
- Store cans in a proper place, properly sealed, so the paint doesn't leak or dry out.
- Storing paint cans upside down can help keep paint fresh.
- Try to use all of the paint.
- Donate any leftover paint to local schools, churches or theatre groups.

From SOCRRA website

www.socrra.org

LARGE ITEM PICK UP REGULATIONS

Date: Thursday June 2, 2016

Time: All large items at street by 7:00 a.m.

Please Note: For the large item pick up ONLY, items such as couches, washing machines etc. may be placed at the curb as early as May 28.

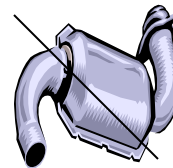
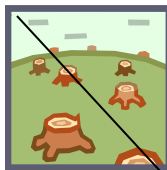
ACCEPTABLE ITEMS

- * Large appliances, furniture and hot water heaters
(Refrigerators & freezers must have Freon removed prior to pick up) (Doors must be removed)
- * Only small tree stumps
- * Brush and tree branches must be bundled and tied; the length may not exceed four feet
- * Rolls of carpet and linoleum must be tied together with the length not to exceed four feet
- * Disposal of construction materials is limited to one 32-gallon trash container



UNACCEPTABLE ITEMS

- * Large tree stumps
- * Hazardous waste
- * Automotive parts
- * Tires
- * Loose gravel
- * Large amounts of construction material & loose items



Car Trucking has the right to refuse to pick up excessive amounts of materials. If you have a large quantity of items, please call Car Trucking at **586.791.8480** and make special arrangements. Car Trucking does have dumpsters (roll-offs) available.

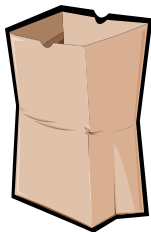
Compost season begins

Now that the snow has melted and spring is officially here, the weekly pick up of compost begins on April 7th and will run through the end of November.

Compost materials include leaves, grass, plants and small bushes.

All compost should be placed in **brown paper bags**. Compost placed in plastic bags will go in with the regular trash as the plastic does not disintegrate quickly.

Tree limbs and branches should be tied into bundles no more than 4' in length. Car Trucking will not pick up anything that is not tied.



VILLAGE COUNCIL MEETING DATES

April 25

May 23

June 27

All meetings start at 7:30 p.m.

Happenings Around Town

Birmingham

Farmer's Market - every Sunday May 1- October 23 9:00 am-3:00 pm. Municipal Lot 6 - North Old Woodward

Art Birmingham - May 7 & 8- Shain Park 10:00 a.m. - 5:00 p.m.

50th Birmingham Village Fair - June 2 - June 5 Shain Park

In the Park Summer Concerts - Wednesdays, June - August 7:00 p.m. Shain Park starting June 22nd Concert Hotline 248.530.1650

Movie Nite in Booth Park - June 24 - 7:30 p.m. Movie begins at dusk

Fireworks - Lincoln Hills Golf Course - July 3 Gates open at 7:00 pm. Rain date July 5.

Beverly Hills

Park Clean Up - May 14 at 10:00 a.m. - Rain Date May 21 10:00 a.m.

Memorial Day Parade & Carnival - May 30 Beverly Park - starts at 11:00 am.

Rouge River Day - May 21

Southfield Twp.

Free Household Shredding - May 7 - 10 am - Noon Parking Lot 18550 W. Thirteen Mile Rd.

What kind of Spring will it be?

The Farmer's Almanac came out with its spring forecast and it's calling for chilly and wet weather.

April

4th-7th. Rain sweeps through the Great Lakes

8th-11th. Thundery weather

12th-15th. Clearing

16th-19th. Turning chilly, unsettled

20th-23rd. Thunderstorms.

24th-27th. More storms.

28th-30th. Unsettled.



May

1st-3rd. Clearing Skies

4th-7th. Pleasant spring weather. Dry for Derby Day in Louisville

8th-11th. Scattered thunderstorms.

12th-15th. Mixed clouds and sun

16th-19th. Pleasant.

20th-23rd. Mixed sun & clouds

24th-27th. Warm temperatures.

28th-31st. Showers, could dampen the Indy 500

The Bingham Farms Post is published quarterly by the Village of Bingham Farms.

Editor: Kathryn Hagaman
clerk@binghamfarms.org

The next edition of the Post is scheduled for July 2016. Deadline for submission of articles is June 15, 2016.

All articles must be submitted in writing to the Village office. The editing of articles is left to the sole discretion of the staff.

Website: www.binghamfarms.org