



THE BINGHAM FARMS POST

Summer 2016

Village Elections Coming Up

Every two years, a certain number of seats on Village Council come up for a vote of the people. This year there are three seats that will be on the November ballot. These are for four-year terms. These are non-partisan elections.

One of our long-time serving residents, Dorothy Warren, has decided to not seek re-election. Dorothy has served in various capacities in the Village since 1996.

Incumbent Carl Grenadier has indicated he will seek another term on Council.

The Council meets monthly on the 4th Monday of the month. On occasion a special meeting may be called. Council members also sit as the Zoning Board of Appeals. The Appeals Board meets as needed.

To be placed on the ballot a



candidate must file a Nomination Petition with a minimum of 15 signatures and a maximum of 20 signatures of registered voters. The candidate must be a resident of the Village, a property owner and a registered voter. **Nominating Petitions must be filed with Southfield Township no later than 4:00 p.m. on July 26, 2016.** This is a firm date and there are no extensions allowed.

Village elections are now handled by the Township of Southfield. Nominating Petitions may be obtained either at the Village office or at Southfield Township, 18550 Thirteen Mile Rd., just west of Southfield Road.

If you would like more information relative to Council elections, feel free to give the Village office a call at 248.644.0044.

DTE Tree Trimming Anticipated

Every so many years, DTE contracts with a tree company to trim trees in various municipalities. They do this to keep electrical lines clear from overhanging branches and hopefully prevent power outages.

This fall, DTE has indicated tree trimmers will be in several parts of Bingham Farms. Much of the work will be done along Telegraph Rd. with some work on Thirteen & Fourteen Mile Roads.

In an effort to keep property owners informed, DTE will place door hangers on each home or office building that may be impacted.

DTE will be making every effort to provide property owners with the information of when the trimming will take place and if asked, show them the

extent of the trimming.

It's a difficult task. DTE wants to be aggressive in the process to prevent power outages. However, many property owners love the large trees in their yards.

It is suggested that any homeowner who receives information relative to tree trimming contact DTE with any questions or concerns. A phone number will be provided on the information card.



There's not much one can do once the tree trimming takes place, so take the time to contact DTE.

Election Inspectors Needed

On election day, a voter follows a process; they provide information to election inspectors who work at the precinct; they fill out the ballot and put the completed ballot into the ballot counter.

The entire process is dependent upon these election inspectors. Every election inspector is trained as to the procedures. Then they put in a very long day on election day, starting around 6:00 a.m. and finishing up about 9:00 p.m. or so.

It is a paid position: chairperson \$185 for the day and election inspectors at \$165 per day. Without these election workers, our election process would not work.

Southfield Township is looking for more election workers to work the August primaries and the November General Election.

The day is long, the pay adequate, but above all your participation in the process is priceless.

Call Sharon Tischler at Southfield Township for more information. 248.540.3420.



UPCOMING VILLAGE COUNCIL MEETINGS

7:30 p.m.

July 25
August 22
September 26



Next Finalizes Strategic Plan

The purpose of **Next** is to be a welcoming place that enriches the lives of our community. **Next** has seen significant growth over the past year as it has extended operating hours, increased the depth and breadth of programming, and is reaching more residents in need of supportive care than ever before.

Next recently embarked on a planning process that has identified three strategic initiatives for the next several years; continued growth, sustainable funding, and organizational alignment with four guiding principles clearly identified: to be a recognized leader in serving the 50+ community, deliver lifelong learning and wellness through comprehensive programming, be an integral part of the larger community, and provide exceptional customer service.

With a focused vision, strategic partners, strong Board leadership, and a passionate staff, **Next** is well positioned to meet the needs of the growing 50 plus population.

Next – Your Place for Travel

Next – Your Place to Stay Active and Connected has long been known as the place for anyone 50 or better to keep fit, unleash their creative spirit or delve into intellectual pursuits, but did you know that it is also where to go if you want a little adventure in your life? **Next**, always evolving to meet the growing interests of its members, and the 50 and better community as a whole, recently hired a dedicated travel coordinator to provide opportunities for people to be tourists in their own backyard or head out across the country. Travel Coordinator, Renee Pompei said, “A recent study by AARP showed that the number one regret of Baby Boomers is they did not travel more. We have a whole slate of trips coming up that are affordable and hassle-free. We take care of all the boring details of travel to allow our guests to just relax and have fun.”

Some of **Next's** exciting destinations include **Stratford Ontario**, **A Tour of the Maine Coast**, and the always popular **Grand Getaway to Mackinac Island**. There are plenty of great day trips as well, including a **Guided Tour of Eastern Market**, an **Ann Arbor Adventure**, and the fun and friendly **Lunch Bunch** traveling to a new and interesting local restaurant once a month. So, whether you want to stick close to home, or cross the country, **Next** has something just for you. To see a full listing of everything **Next** has to offer, please go to www.BirminghamNext.org or stop by **Next** at 2121 Midvale in Birmingham.



State Fireworks Law

As the 4th of July approaches, here are some reminders about the sale and use of fireworks in Michigan:

The Michigan Fireworks Safety Act *permits* the sale and use of flying and exploding fireworks. The Act requires that *licensed* vendors are required to verify that all purchasers of the exploding and flying fireworks are at least 18 years of age; however, there is no age restriction on the user of the fireworks.

Some of the fireworks that are now legal under the Michigan Fireworks Safety Act include Roman candles, firecrackers, bottle and sky rockets, missile type rockets, aerial spinners, reloadable shell devices and singe tub devices with raptor.



Some fireworks remain illegal and cannot be sold or used in Michigan, including Cherry Bombs and M-80's. In addition, fireworks cannot be used on public property (schools, roadways, etc.), and the user of fireworks cannot be under the influence of intoxicants.

State law allows fireworks to be used any time, day or night, the day before a national holiday, the day of a national holiday, and the day after the holiday. The Village prohibits excessive noise after 11:00 p.m.

If you plan to light fireworks during the holiday season, have a charged garden hose or some other water supply nearby just in case there's an accidental small fire.

If you have any complaints about fireworks displays, call the police department at the non-emergency number 248-626-5444.

Have a safe holiday.

The President's Corner

Jeffrey D. Modell Esq.

The Village of Bingham Farms is run by its President, constituting the executive branch, our lean professional staff, the Village Council who debate and make both legislative and major operational decisions in public meetings, two Boards and a Commission.

Both the President and the Trustees of the Council are elected positions with interim appointments for vacancies. The Village Clerk, Village Treasurer, Planning Commission and the Design Review Board members are appointed by the Council. The Trustees and President also sit on the Zoning Board of Appeals. Our Clerk does the work municipalities generally divide into two jobs (and employees). Only the professional staff (i.e., the Clerk, Treasurer and our part-time office worker) are paid and compensation is NOT at the high end of the peer group range.

Trustees are expected to attend most of the meetings, serve on a sub-committee (e.g., Police Liaison, Fire Commission, Roads), and may also be asked to sit as the Council representative for a Board or Commission or third-party organization providing services to the Village such as the South Oakland County Water Authority.

Our volunteer work is frequently repetitive, often boring, requires preparation for each meeting, and may involve judging the line between the interests of the Village as set forth in its ordi-

nances bounded by state law and a resident.

The Village is both blessed and inhibited by its overall affluence. High property values reduce the pool of young families joining the Village. As a consequence many of our volunteers are older so we face constant attrition.

Some residents have no issues paying the current property taxes and would be willing to pay more for improved roads, staffing and sometimes even litigation but others (who moved in when the property was more affordable) are stretched just to continue living here. The State has put a crimp in our funding by phasing out the business personal property tax and imposing restrictions that reduce property taxes when values fall but do not allow us to timely restore them when values recover. The limited kitty of funds must be spread among competing interests and there may situations whereby some residents will disapprove of Council's determination of their best use.

With that introduction and full disclosure, I am asking for volunteers to keep Bingham Farms running. Generally residents start out as an appointee to get their feet wet, but there is nothing stopping a resident from running for elected office.

Thank you for your consideration.

Fire Dept. Annual Meeting Set

Every resident in Bingham Farms is invited to attend the Franklin/Bingham Farms Volunteer Fire Dept. Annual Meeting.

It's set for Monday, August 1st at 8:00 p.m. at the Fire Department, located at 32707 Franklin Road, right next to the gas station.

It might be the perfect time to explore downtown Franklin too.



Water Rates On the Rise

The good news is that Southeast Michigan residents are doing a great job in reducing their water usage.

The bad news is the cost of water is going up because our water rates are based upon pre-established water sales.

So, no matter how we conserve, if the amount of water purchased from Detroit Water and Sewerage doesn't equal the contract amounts, a shortfall exists.

So, beginning July 1, 2016, Bingham Farms residents will see a 6% increase in water rates from last year.

On the sewer side, the increase will be a whopping 12% to cover operational and maintenance costs.

There are a few homes in Bingham Farms that still use well water. They are assessed a flat rate quarterly sewer charge of \$116.95 up from \$104.15 last year.

***SIGN UP FOR
VILLAGE EMAIL BLASTS
Go to
www.binghamfarms.org
Click on
Stay Informed icon***



NOTICE OF CLOSE OF REGISTRATION
FOR PRIMARY ELECTION TO BE HELD ON
TUESDAY, AUGUST 2, 2016 FOR
TOWNSHIP OF SOUTHFIELD

To the qualified electors of the Township of Southfield, County of Oakland, State of Michigan.

NOTICE IS HEREBY GIVEN THAT THE TOWNSHIP OF SOUTHFIELD WILL BE OPEN:

FROM 8:30 A.M. TO 5:00 P.M. - MONDAY - FRIDAY
LAST DAY TO REGISTER - TUESDAY, JULY 5, 2016
18550 W. 13 MILE ROAD, SOUTHFIELD TWP., MI

FOR THE PURPOSE OF RECEIVING APPLICATIONS FOR THE REGISTRATION OF THE
QUALIFIED ELECTORS IN SAID TOWNSHIP NOT ALREADY REGISTERED.

If you are not currently registered to vote or need to register at a new address, you may do so at the
following locations and times:

In Person:

- County Elections Division, 1200 N. Telegraph Rd., Pontiac, MI 48341, Monday – Friday, 8:00 am – 4:30 pm.
- Secretary of State Branch Offices.
- At specified agencies for clients receiving services through Family Independence Agency, the Department of Community Health, Michigan Jobs Commission and some offices of the Commission for the Blind.
- At military recruitment offices for persons who are enlisting.

By Mail:

- Voter Registration Application - Mail to the election official as directed on the application by the close of registration deadline.

Note: Persons registering by mail are required to vote in person unless they have previously voted in person in the state or are at least 60 years of age or are handicapped.

THE AUGUST 2, 2016 PRIMARY ELECTION WILL BE CONDUCTED IN ALL VOTING
PRECINCTS OF THE TOWNSHIP OF SOUTHFIELD, FOR THE PURPOSE OF NOMINATING
CANDIDATES OF ALL PARTICIPATING PARTIES FOR THE FOLLOWING OFFICES:

CONGRESSIONAL	Representative in Congress
LEGISLATIVE	State Representative
COUNTY	County Executive, Prosecuting Attorney, Sheriff, Clerk/Register of Deeds, Treasurer, Water Resources Commissioner, County Commissioner
JUDICIAL	Judge of District Court - 46 th District- Incumbent Position
LOCAL	Supervisor, Clerk, Treasurer and 4- Trustee Positions



Two Organizations Set to Solicit in Village

Please take note that two non-profit groups are set to canvass Bingham Farms. The first is a group of young people from the Michigan Conference of Seventh Day Adventists doing "door-to-door missionary work" in the months of July and August.

They will be asking to place Christian literature in each home that will accept it and enable residents to give a donation to help further their missionary training.

In July, The Fund for the Public Interest will be canvassing to inform residents of the efforts of Environment Michigan to curtail the precipitous decline of the bee population.

Non-profits, such as these, are protected by the First Amendment. However, they are subject to soliciting during reasonable times and under reasonable restrictions. They must obey any "No Solicitation" signs visible from the main door of a private residence.

As required by Village ordinance, both organizations have registered with the Village and the police department. As such, they have fulfilled all the requirements necessary to "solicit" in the Village.

Officers Recognized For Exemplary Work

Four police officers and two police staff of the Franklin/Bingham Farms Police Dept. were recently recognized for diligent police over the past year.

Officer Jim Herschfeld was recognized for his thoroughness, self-initiation and dedication to duty for spotting a stolen vehicle parked in a Bingham Farms office parking lot on Telegraph. He immediately contacted the jurisdiction was looking for it.

Sgt. Dyjewski, D/Sgt. Bastianelli, Officer Berry and Reserve Officer Vogrin were recognized for exceptional teamwork in dealing with a potential volatile situation during a routine traffic stop on Telegraph Rd. that involved guns and drugs.

Officer Jenkins, Officer Forton, Detective/Sergeant Bastianelli were recognized for their thorough and comprehensive investigative actions for a theft involving a landscape employee.

Police Clerk Michele Melekian's quick thinking helped a man in severe diabetic shock who had entered the police station looking for help.

Police Clerks Melekian & Susan Schultz were recognized for their efforts in updating policies and procedures relating to the LIEN system.

Thank you!

Kindly Pick Up After Your Dog

This is somewhat embarrassing to write. One of the major complaints in the Village involve dog owners who do not pick up after their dog.

Some dog owners leave their dog poop wherever...on someone's lawn, even on the road.

There are others who do carry doggie bags and place the droppings in the bag. They even tie it off. But then, they will leave it on someone else's property. Better yet, if it's garbage pick up day, they just deposit it in a readily available empty trash can, so that property owner can either dispose of it or leave it in the trash can until the following week.

Some residents have taken an aggressive stance to ward off the ignominious droppings. By posting signs on their trash cans. They've attached signs similar to what's below.



GOING ON VACATION?

Fill out a House Check Form. A sample is found in this newsletter. The form also is available online at

binghamfarms.org. Click on the Forms link.

When filled out drop it off at the Franklin Bingham Farms Police Station, located at 32325 Franklin Rd. in downtown Franklin.

This is important information for our police to know as they do routine patrols of the Village.

Keep Your Lawn Healthy

Your lawn so far has survived a very dry spring. Now take steps to keep the lawn healthy by following these fertilizer tips.

- **Mulch** your grass clippings. Let short clips fall back on the lawn. Clippings are a source of nitrogen.
- **Cut high.** Leave 3 inches on the grass blade after cutting. Tall grass promotes root growth and shades out weeds.
- **Rake** compost into the lawn. Rake 1/2 inch of compost into an

established lawn to build soil fertility.

- **Water the lawn** to minimize stress. A green lawn in Michigan needs .5 to 1.5 inches of water per week. Don't soak your lawn; watering should not produce puddles. Lawn dormancy is a natural response to drought. However, some water may be necessary during an extended drought of more than a month.

Bits n Pieces

Garbage Pick Up

- Regular garbage pick up is scheduled for Thursdays.
- Have garbage out by 7:00 a.m. on Thursdays or after 7:00 p.m. Wednesday evening.
- Questions - call Car Trucking at 586.791.8480



Grass mowing

- It's best in the summer to keep your grass at 3" as this prevents it from drying out.
- Do not let grass/weeds get to 8" or more as this will cause the Village to issue a violation.

Construction Work

- Construction should not begin before 7:00 a.m. and should stop by dusk. Construction equipment should not start before 7:00 a.m.



Contractor Signs

- Do not allow any contractor doing work on your property to put up their signs. This is considered advertising and is prohibited by Village ordinance.

Tree Removal

- If you are taking down more than three trees, call the Village office to check whether a permit is needed. The village has a Tree and Woodlands Protection Ordinance.



Summer Storms

- If the power goes out, call DTE **800.477.4747**. Call, even if your neighbor has already called it in. It helps DTE estimate how many customers are out of power.



Baldwin Library Summer Programs

Readers of all ages are welcome to join in the fun with BPL's Summer Reading Program. Sign up online at www.baldwinlib.org/summer-reading, read books to win prizes, then join us for our Finale events in August. Children will enjoy the finale party with Baffling Bill the Magician on August 15 at 10:30 a.m. Teens will wrap up the program with a Chocolate Olympics Finale Party on Thursday, August 11 at 6:30 p.m. Jody Trierweiler from "Live in the D" will host the Adult Summer Reading Finale on August 10 at 7:00 p.m.

Baldwin offers a wide variety of programs for all ages from birth to adult. Children are invited to Fancy Nancy All Grown Up on July 14 at 10:30 a.m., Paleo Joe's Dinosaur Day on July 19 at 2:00 p.m., and the annual Stuffed Animal Sleepover on July 25 at 6:30 p.m. Special programs for teens include a Jedi Academy Workshop with Ring of Steel Action Theatre and Stunt Troupe on July 21 at 7:00 p.m., a National Teen Library Lock-In from 6:30 p.m. to 10:00 p.m. on July 29, and an afternoon of Quidditch with the University of Michigan Quidditch Team on July 30 at 2:00 p.m. On July 24 at 2:00 p.m., enjoy our Music Explorers Society series with the Fleur de Lys String Ensemble. Visit www.baldwinlib.org for a complete list of events.

Beginning in September, Baldwin Public Library's Adult Services area will be under construction. The renovation will increase efficiency, update infrastructure, improve circulation and wayfinding, add study and collaboration spaces, improve acoustics, update carpeting and fixtures, honor and elevate the historic 1927 building, and bring in more light with windows. The Library will remain open throughout the renovation and visitors will still be able to access new books, DVDs & Blu-Rays, though some of the permanent collection will be in storage. The renovation is expected to last six months.

A Senior Must Have

They are called Vial of Life. The vials contain pertinent medical information to which emergency personnel can have immediate access.



The vial contains a medical sheet that identifies medical history and current medications. Fold the sheets and place them in the vial. Seal the vial and place it in your freezer, making sure the vial remains easily visible when the freezer door is opened.

Place a magnet on your refrigerator door and place the sticker adjacent to the entrance door of your home.

When emergency personnel see the stickers, they know you have a vial of life in your freezer and can immediately access the information.

The Village office has a supply of vials, so stop in and pick one up.

Have any questions? Call the Village office at 248.644.0044.

When To Pull A Permit?

It's great to see all the activity in the Village with people working on landscaping, or making changes to the exterior of their home. So, when are permits necessary and what work needs Village approval.

New homes and additions need Village approval before getting a permit. Any significant changes to the exterior of a home may also require Village approval.



Before undertaking any exterior projects, give the Village office a call 248.644.0044. It could save you time and money.



FRANKLIN – BINGHAM FARMS POLICE DEPARTMENT

32311 Franklin Road
Franklin, Michigan 48025
PHONE NUMBER: (248) 626-9672 (non-emergency)
Emergency 911
Dispatch (248) 626-5444

HOUSE CHECK FORM

Fax Number: (248) 538-5450

DATE TAKEN: _____

NAME	ADDRESS	
PHONE () -	LEAVING	RETURNING
CAN BE REACHED AT:		PHONE () -

ALARM: YES ____ NO ____	TYPE: SILENT ____ AUDIBLE ____ OTHER ____
ALARM COMPANY: _____ PHONE () -	

MAIL / NEWSPAPER STOPPED: YES ____ NO ____ LAWN / SNOW CARED FOR: YES ____ NO ____

CAR IN DRIVEWAY: YES ____ NO ____ If yes, what kind? _____

TIMED LIGHTS: YES ____ NO ____ AREA: _____

WILL ANYONE HAVE ACCESS? YES ____ NO ____ If yes, WHO, WHEN? _____

NEIGHBORS WATCHING HOME:	NAME
	ADDRESS
	PHONE () -
OTHER INFORMATION:	

Each resident shall be advised of the following: The best deterrents for burglaries are trustworthy neighbors who will report any suspicious activity to the police and a good burglar alarm system. If, for any reason, the resident returns early or extends his / her stay, the resident is to let the Franklin – Bingham Farms Police Department know immediately.

TIME / DATE CHECKED	OFFICER (S)	REMARKS
1.		
2.		
3.		
4.		
5.		
6.		

ALARM REGISTRATION FORM

Franklin Police Department

32311 Franklin Road

Franklin, MI 48025

Phone (248) 626-9672 Fax (248) 538-5450

Alarm System User

Business Name (if applicable): _____

First Name: _____ Last Name: _____

Address: _____ City: _____ State: _____ Zip Code: _____

Suite: _____ Other Alarm Site Information: _____

Phone: _____ Alt.: _____ Email: _____

Alarm Panel Location: _____

Alarm Type: Panic _____ Break-In _____ Fire _____ Audible _____ Silent _____

Billing Information (If different from above)

Business Name (if applicable): _____

First Name: _____ Last Name: _____ Title (check): __ Mr. __ Mrs. __ Ms.

Alarm Company

Business Name: _____

Address: _____ City: _____ State: _____ Zip Code: _____

Phone: _____ Fax: _____ Contact Person: _____

Job Title: _____ Email: _____

Monitoring Company (If different from above)

Business Name: _____

Address: _____ City: _____ State: _____ Zip Code: _____

Phone: _____ Fax: _____ Contact Person: _____

Job Title: _____ Email: _____

Emergency Contact Information

	Name	Relation	Phone	Alternate Phone
1.	_____	_____	_____	_____
2.	_____	_____	_____	_____
3.	_____	_____	_____	_____

Village Balances Its Budget Once Again

The Village Council recently approved a balanced Fiscal Year 2016/2017 Budget and was able to maintain the 8.4 mill rate.

This was accomplished with just a minor increase in property tax revenue, up and some savings in public safety.

The taxable value of properties in the Village this fiscal year is \$162,299,000, an increase of just 2.3% over last year. This is less than the taxable value of properties in FY 2002-2003.

Given the constraints of both the Headlee Amendment and Proposal A, both controlling the annual increases in property taxes, the Village probably will

never recover from the real estate recession of 2008.

This is the result of these two amendments combined with the bottom dropping out of the real estate market in 2009. Local municipalities are searching for other means to keep current levels of service. For Bingham Farms, that is through its millage rate.

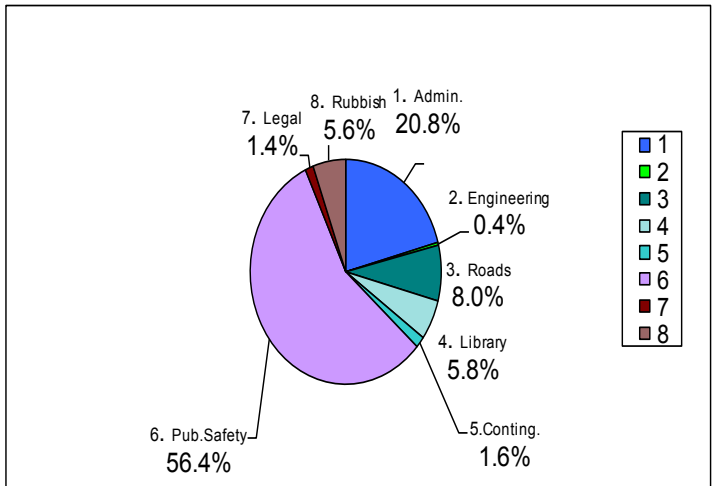
People believe that when a property is sold, it is uncapped and the municipality benefits. But that's not correct as that gain is spread across all the taxpayers. The taxpayers benefit ; the Village does not.

The only time the Village sees

a bump is when a new home is built and only then does that assessed value become an addition to the tax base.

Adding up the impact and restrictions with Headlee and Proposal A, the loss of statutory state revenue sharing and the significant reduction in property values; hence the reason the Village must rely on its millage rates to provide necessary, quality services to its residents.

1 Administrative	381,747
2 Engineering	7,500
3 Appropriations-Road Imprvmnts.	147,017
4 Library	106,211
5 Contingency	30,000
6 Public Safety	1,037,431
7 Legal	25,500
8 Rubbish	102,007
	\$1,837,413



Budget Highlights

The Village Budget for FY 2016-2017 is \$1,837,413, comparable to last year's budget. This is due to the fact that the Franklin/Bingham police department saw the retirements of its long-serving police officers and filled the openings with new officers starting at lower salaries.

As the graph depicts, 56% of the budget goes to public safety, which includes the purchase of services from the Franklin Police Dept. and the Franklin/Bingham Fire Dept.

The Village also purchases

library services from the Birmingham Baldwin Library. The cost this year is \$106,211, up \$5,000 from last year.

Administrative expenses are \$381,747, up \$17,500. This category includes costs for office rent, rubbish collection, planning, salaries, etc.

As indicated before, the major increase in the Budget (17%) is for roads. In the recent past, the Village has concentrated on road maintenance projects. However, some of the roads now will need major reconstruction and the Village is beginning to estab-

lish funding for these projects to avoid financing them

**BINGHAM FARMS
VILLAGE TAX
Due without penalty by
August 31, 2016**

**SOUTHFIELD TWP. SUMMER
TAX
Due without penalty by
September 14, 2016**

Keep Fighting the West Nile Virus This Summer

It seems that the battle against West Nile Virus is unending. Now there's concern over the Zika Virus.

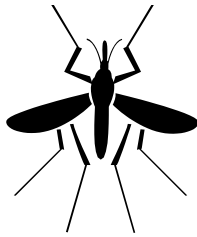
First, West Nile Virus continues to be a significant factor, especially in southeastern Michigan.

Last year, Michigan documented 18 cases of human infections and 2 deaths. All but 4 were in southeast Michigan.

There were 3 cases in Oakland County

For most people the virus is just a slight nuisance. Many don't even realize they've been infected. It's another story for older adults and very young children. The virus could cause major problems.

The Oakland County Health Department believes that the low numbers of human infections is directly related to the prevention methods people are



taking. The best advice — keep doing what you are doing.

- ♦ Reduce areas where mosquitoes breed,
- ♦ Repel to protect against mosquitoes, and
- ♦ Report potential mosquito breeding areas.

Other measures that can reduce the risk of contracting the virus include:

- ♦ Repair all holes in windows and screens to keep mosquitoes out of your home.
- ♦ Empty water from mosquito breeding sites such as buckets, barrels, cans, old tires etc.
- ♦ Avoid being outdoors when mosquitoes are most active (dawn and dusk).
- ♦ Wear light colored, long-sleeved shirts and long pants when outdoors.
- ♦ Apply insect repellants that contain the active ingredient DEET to

exposed skin or clothing. Always follow the manufacturer's directions for use. (Avoid applying repellent containing DEET on children less than two years of age.)

The state and the county still monitor the situation by recording the number of dead birds. This often is an indicator that the bird was infected.

If you find a dead bird, report your finding to the Oakland County Health Division Hotline at 1-877-377-3641. Then, properly dispose of the bird and wear gloves to protect yourself from direct contact.

At this point, no Zika virus infections have been reported in Michigan.

For updates on West Nile Virus, log on to the state or county website at:

www.michigan.gov/westnilevirus

or

www.oakgov.com.

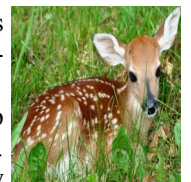
Don't Feed the Deer

Cute to look at, but not when they're feasting on your hostas and other flowers. The Village receives complaints constantly, but there's not much the Village can do. Because we are in a populated area, it is not safe to cull the growing herds.

Making matters worse, some neighbors are actually feeding the deer. That is not a recommended activity for several reasons.

- Deer need to keep their foraging skills. This is how they survive.
- Having food out for them just draws more deer into the area.

There are a few products on the market that might detract the deer from eating your plants, products like Liquid Fence or Deer Off among others. One of the drawbacks for these products is that one has to rotate with different spray products because deer and rabbits will get used to the scent.



How to Safely Dispose of Household Hazardous Waste

It's convenient, easy and available all year long. Best yet, **NO APPOINTMENT NEEDED.** Bingham Farms' residents can drop off their household hazardous waste products at the SOCRRA facility on Coolidge Highway in Royal Oak.

The contract between the Village and SOCRRA also allows residents to drop off electronic equipment, such as televisions (no consoles) and computer equipment.



Put the items in your car, drive to the facility, drive up to the little building in the back. Just show proof of residency (driver's license will do). The SOCRRA staff will do the rest. They will remove all the items from your vehicle.

The whole experience should

take less than an hour and that's door to door.

Should you have any questions regarding acceptable materials, call SOCRRA at **248.288.5153** or visit their website at www.socrra.org.

Remember the contract covers just household hazardous waste and electronics. It does **not** cover business hazardous waste. Federal and state environmental laws prohibit the facility from accepting this type of waste.

Businesses may call the Environmental Recycling Group at 734.437.9650 to receive information for proper disposal. They are located at 13040 Merriman, Ste. 299, in Livonia.

Cable TV Problems?

Having problems with your Comcast or AT&T TV service or have a question about your bill?

COMCAST 1-800-266-2278

Local Office 248-549-2100

Local office located at 4500 Delemere Blvd., Royal Oak (south off 14 Mile Rd., east of Coolidge)

AT&T 1-800-288-2020

Birmingham Area Cable Board Complaint Line:

248.336.9445

TAXES ARE DUE

BINGHAM FARMS VILLAGE TAX

**Due without penalty by
August 31, 2016**

SOUTHFIELD TWP. SUMMER TAX

**Due without penalty by
September 14, 2016**

Upcoming Events

Birmingham

In The Park Concerts - 7 p.m. Shain Park Every Wednesday—June - August

Farmer's Market - Municipal Parking Lot #6 Old Woodward, (south of Maple) every Sunday 9 a.m. - 2:00 p.m. thru October

Fireworks - July 3 Lincoln Hills Golf Course - Rain date 7/5

Family Movie Night - Booth Park 7:30 p.m. Jul 15 & Aug. 12

Day on the Town - downtown July 23 9:00 a.m.—7:00 p.m.

Street Art Fair - Sept. 17 & 18

Franklin

Farmers Market on the Green Sundays 11:00 a.m. - 3:00 p.m.

Music on the Green - downtown Franklin— evenings
July 13, July 20 & July 24 at 7:00 p.m. weather permitting

Movies on the Green - downtown Franklin - 8:30 p.m.
July 27, Aug. 3 & Aug. 10

Labor Day Parade - downtown Franklin - Sept. 5

Cider Mill - Open from Sept. 4 - Nov. 26

General

Woodward Dream Cruise - August 20
www.woodwarddreamcruise.com

**SIGN UP TODAY FOR
EMAIL BLASTS**

**LOG ON TO
www.binghamfarms.org**

**Click on the Stay Informed icon
at the bottom of the Homepage**

The Bingham Farms Post is published quarterly by the Village of Bingham Farms.
Editor: Kathryn Hagaman
clerk@binghamfarms.org
248.644.0044

The next edition of the Post is scheduled for October, 2016. Deadline for submission of articles is September 15, 2016.

All articles must be submitted in writing to the Village office. The editing of articles is left to the sole discretion of the staff.
Website: www.binghamfarms.org