



# THE BINGHAM FARMS POST

Winter, 2016

## Winter Maintenance Reminders

So, this winter has gotten off to a pretty slow start, that's putting it mildly. Pun intended.

However, each year the Village encounters the same problem with just a few residents who hire contractors to plow the snow from their driveways. The plow companies just push the snow across the road and dump it on a neighbor's property.

Here are the rules for winter 2016.

### State & County Roads

This year, we'll just have to wait to see what Mother Nature blows our way. No matter what, the Road Commission will be ready.

The Road Commission plows many of the state highways, like Telegraph, for the State of Michigan, along with its own County roads such as Thirteen & Fourteen Mile Roads.

Due to declining revenues, staff-

ing within the Road Commission has dwindled so part time help will be used. If wicked weather occurs in a back-to-back storm, it may take awhile to clear the roads.

Drivers are asked to use caution at all times. If there are new drivers in your family, it's advisable to take them out when snow is on the roads so they get used to changing conditions.

### Village Roads

As in past years, the Village contracts with Johnson Landscaping for snow removal services. Once two inches of snow has accumulated on the roads, the plows are called out.

If conditions warrant, extra work is authorized. The decision to

**Cont'd on Page 4**



## And Then It Was Gone

For years, the building at 30900 Telegraph Rd. sat empty, deteriorating every day. No one has occupied the building since 2007.

Finally, after entering legal proceedings, the building is coming down.

The process is taking longer than scheduled. Demolition workers started up the equipment on Tuesday, morning December 22, 2015. The bricks were salvaged to be used on another project somewhere beyond Bingham Farms.

The process to bring the building down was long and tedious.

Back in July, the Village, with the help of the Southfield Building Dept., was able to obtain a search warrant to enter the building to assess its overall condition. With the results of that warrant, the Village obtained from the 46th District Court an order to take the building down. The owner went to Circuit Court and obtained a stay. However, the Judge

**Cont'd. on Pg. 3**



## Simple Recycling Coming to Bingham Farms

Simple Recycling is an Ohio based company that takes your unwanted clothing and home goods and finds alternative sources for them so they do not end up in a landfill.

According to statistics, 85% of all clothing ends up in the landfill, only 15% gets recycled or donated. The EPA estimates that 68 lbs./person of clothing are thrown away each year.

Simple Recycling finds alternative sources for recycling these items. And they do it curbside.

Here's how it works. In the next few weeks all residents will receive a brochure in the mail. It will give you basic information on the pro-

gram and how it works. Shortly thereafter, you will receive another mailer, this time with green recycling bags.

On our normal Thursday garbage pick

up, a Simple Recycling truck will come through the Village and pick up any green recycling

bags that are left at curbside. These green bags should be placed on the other side of your driveway, separated



from your regular trash and recycling bins.

When the driver picks up the green bag(s), he will leave a new one for future use.

So where do these items end up? First, they are taken to regular non-profit stores such as the Salvation Army or other non-profits. From that point, the remaining materials are taken to a warehouse where they are once again separated; some of what remains is sent to 3rd world countries, the remainder to a landfill.

Rather than 10% of materials going to a landfill, it's reduced to 2-3%.

**Cont'd on Page 3**

## Operation Medicine Cabinet Available at the Franklin Police Dept.

Not sure how to dispose of unused prescription pills? Here's a pretty easy way to get rid of them and not by flushing them down the drain.

The Oakland County Sheriff's Office is proud to sponsor [Operation Medicine Cabinet™](#) (OMC). OMC was launched at the Oakland County Sheriff's Office in July of 2009. It provides citizens a venue to properly dispose of their expired and/or unused prescriptions anonymously at several different locations around Oakland County.

The newest location is right in our backyard. The Franklin Bingham Police Dept. has just become another official location for this program.



All you have to do is bring in your unused or expired medicines to the police department. No sharpies though.

A police officer will count the pills left in the prescription bottles, put the pills in a sealed bag and return the bottles back to you.

Then you just drop them off in the depository in the lobby.

That's it. No questions asked. No names placed on the pill bags that are deposited.

It's quick and it eliminates some of the ingredients in those prescription drugs from entering our water system.

The Police Department is located at 32325 Franklin Road, between 13 & 14 Mile Roads. Office hours are 9:00 a.m. - 5:00 p.m., Monday through Friday. For more information call 248.626.9672

## Library Notes

The Baldwin Library is the scene of new offerings not only in events, but physical additions.

First, there is now a curbside book return drop off box on the west side of Bates, that's the side facing the park. Since it is a 2-way street, the drop box is located on the passenger side. The Library is testing this concept for a year to see how it works out for its patrons.

The Library is also seeking bids for the renovation of the adult section of the library.

Of course, there are the new events scheduled for the new year.

### Community Coloring - An All Ages Event!

*Wednesday, January 6 at 7 p.m.*

Coloring is fun for everyone! Join us for a relaxing evening of coloring and conversation. We'll provide the coloring books and colored pencils, you provide the chit chat.

### SAT Practice Exam

*Saturday, January 16 at 1:30 p.m.*

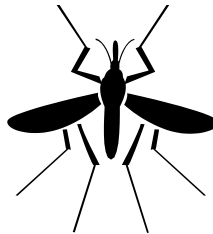
Getting ready to take the new/redesigned SAT? Come take a practice test! The test is free and no school will see the scores. It takes 3 hours to complete. Students should bring a calculator. Water and a snack will be provided.

**Cont'd on Pg. 4**

## WEST NILE VIRUS INFECTIONS SAW AN UPTICK IN 2015

Looks like the impact of West Nile Virus was less severe this year. There were 18 human cases reported, down significantly from the 33 cases last year. In Oakland County there were 3 cases reported. But don't raise the victory flag so quickly. The virus is still around. There were 25 dead bird infections confirmed in the State.

These results show that precautionary measures are working as people try to avoid mosquito bites.



Most people infected with West Nile do not show any symptoms. However, symptoms may appear anywhere from 3 to 14 days after being bitten. Twenty percent however, have flu-like symptoms, including fever, fatigue, headache and muscle or joint pain. Less than 1% of those infected become severely ill.

The Oakland County Health Dept. reiterates that prevention is the best method to combat the virus. Specifically,

- ♦ Reduce areas where mosquitoes breed,
- ♦ Repel to protect against mosquitoes,
- ♦ Report potential mosquito breeding areas.
- ♦ Repair all holes in windows and screens to keep mosquitoes out of your home.
- ♦ Empty water from mosquito breeding sites such as buckets, barrels, cans, old tires, or similar sites.
- ♦ Avoid being outdoors when mosquitoes are most active (dawn and dusk).
- ♦ Wear light colored, long-sleeved shirts and long pants when outdoors.
- ♦ Apply insect repellents that contain the active ingredient DEET to exposed skin or clothing. Always follow the manufacturer's directions for use. (Avoid applying repellent containing DEET to children less than two years of age.)

For updates on West Nile Virus, log on to the state or county website at:  
[www.michigan.gov/westnilevirus](http://www.michigan.gov/westnilevirus)  
 or  
[www.oakgov.com](http://www.oakgov.com)

## **THE PRESIDENT'S CORNER**

### **JEFFREY D. MODEL, ESQ.**

#### Fix The Roads!

This winter has been mild with minimal need for snow plowing or salting (and we pay by the plow). That's the good news. The bad news is we still need to remedy damage from prior winters and normal aging.

The Village has been working with our contract engineer, Tom Meszler, to develop a strategy to take care of our roads. Beside our annual maintenance, the Village is looking to put together a timeline whereby our roads are systematically upgraded. The typical life span of an asphalt road is 15 years, plus or minus depending upon traffic volume and weather related events. Here's a quick look at what's coming up and when. Our Fiscal Year ("FY") ends on June 30, 2016.

Road Reconstruction (Major Work) -

Bingham Rd. - FY 2019-2020 - \$350,000  
- estimated

Bristol Ln. - FY 2021-2022 - \$250,000  
- estimated

These roads carry the most traffic, especially Bingham Rd. Both also need base repair work, an estimated cost of about \$56,000) that cannot wait until the total milling overlay. The dollars involved are quite significant relative to our cash flow.

The Village is in the process of budgeting for these major projects but our ability to accumulate a fully adequate dedicated reserve is constrained by state law which prefers to see the cost borne by the later users rather than those who wore the roads down. The ancillary costs of issuing bonds are so high that it makes no sense to even consider them for these projects so we need to pay for these roads through taxes.

There is one other road in the Village that is also in need of serious repair and that is Timber Trail. It has

limited traffic. The latest cost estimate for its resurfacing is around \$300,000. Timber Trail was originally intended to be an unpaved temporary construction road. It was not built to our normal standards and has major drainage issues. Further, resurfacing will require the removal of many of the trees that line both sides of this road. We need to come up with a viable long-term solution but for now Council plans on continuing to patch Timber Trail. The Village is also looking into new paving materials such as porous pavement that might eliminate the need to lose a great many trees.

The Village is in good financial shape and with prudent future spending and saving, and a modicum of luck avoiding major unplanned expenses, we are on track to finance the major road projects.

As we enter 2016 the Village Staff and I wish everyone a healthy, happy New Year.

#### **VILLAGE COUNCIL MEETINGS 2015**

**January 25  
February 22  
March 28**

Meetings begin at 7:30 p.m.

**CHECK OUT  
THE  
VILLAGE WEBSITE  
FOR ALL THE NEWS  
[www.binghamfarms.org](http://www.binghamfarms.org)**

#### **Building Demolition Cont'd from Pg. 1**

ordered that 24 hour security be placed on the premises to secure the site.. Shortly after, a slew of negotiations occurred between a number of parties and the owner agreed to take down the building at his own expense.

So what's going to go up? Incredibly another developer approached the Village to construct a new building for DaVita Dialysis.

**SIGN UP FOR  
EMAIL BLASTS  
[www.binghamfarms.org](http://www.binghamfarms.org)  
Click on STAY INFORMED  
at bottom of Home Page**

#### **Simple Recycling Cont. from Pg. 1**

Better yet, this program is offered free of charge to residents. And there is no cost to the Village. In fact, the Village will receive \$20/ton for the items collected in the Village.

This is a win-win for everyone. The Village has entered into a 4-year contract with Simple Recycling. Here's to a successful program.

## CHANGE YOUR CLOCKS CHANGE YOUR BATTERIES

This may seem premature but consider this a heads up that come Spring clocks will move forward. Come **March 8th**, we give back that extra hour of sleep gained in the fall.

Turn your clocks ahead one hour on Sunday. Or as many do, turn them back before you go to bed on Saturday night. Daylight Savings Time begins at 2:00 a.m. Sunday morning. It always falls on the second Sunday of March.

On the positive side, the time change means that warmer weather is soon to arrive.

Remember, while changing your clocks, change the batteries in your smoke detectors and carbon monoxide detectors too.

Be proactive. Take a few minutes to make sure all your detectors are working. It might not just save your house, it may also save YOU.



## Winter Travel Tips

Get ready for another unpredictable Michigan winter: icy windshields and roads, cold feet, runny noses, and kids turning pale for lack of exposure to the sun.

Here are a few tips and reminders to survive the cold.

1. Have your furnace checked to make sure it is clean and safe. Make certain that your carbon monoxide (CO) detectors are functioning. If you have a fireplace, check the chimney to make sure that it is not blocked or in need of the services of a chimneysweep.
2. Have good tires and good wiper blades on your vehicle.
3. Keep the gas tank full.
4. Keep extra clothing in the car - parka, boots, gloves, and a blanket.
5. Take your cell phone with you.
6. Carry a bag of sand, rock salt, or kitty litter in the trunk in case it's needed for traction.
7. Keep a snow shovel in the car. Better to have it and not need it than need it and not have it.

Drive with extra care, allowing extra time to get to your destination. Enjoy a safe and beautiful Michigan winter!

From the F.B.F.D

## Library Notes

(Cont'd from Pg. 2)

### Introduction to Mindfulness Based Stress Reduction, with Linda Oxford

Saturday, January 23 at 2 p.m.

Learn how to face, understand and work with stress, pain, and the challenges of the 21<sup>st</sup> century, in a healthy and productive way. Explore how the ancient practice of Mindfulness meditation can restore balance and reduce stress in your life.

### Χορός Ας! A Celebration of Greek Folk Dancing

Monday, February 8 at 7 p.m.

Learn all about Greek folk dancing and its traditional costumes and jewelry with the KYKLOS Hellenic Society.

### Love Stories from the Underground Railroad with Dr. Roy Finkbine

Tuesday, February 9 at 7 p.m.

Most individuals who ran away from slavery were single young men fleeing bondage alone or in pairs. Learn about three couples who also escaped along the Underground Railroad and were motivated by the desire to be married and raise families in freedom.

Find more information about the Library and its programs on our website at [www.baldwinlib.org](http://www.baldwinlib.org).

## Winter Maintenance Cont. from Page 1

salt the roads is based on the assessment of the police department taking into consideration current weather as well as local forecasts.

### Private Driveways

Residents have responsibilities too. Village ordinance, as well as state law, prohibits the plowing of snow across a road and dumping it on your neighbor's property. Most residents have instructed their snow removal contractors to abide by the law.

Plowing snow across a roadway leaves what are called "snow rows". These deposits create a safety problem for motorists and pedestrians and make it more difficult for the Village contractor to properly clear the streets.

The Village is not alone enforcing this state law. The Road Commission for Oakland County (RCOC) has encountered similar prob-



lems. There have been times that roads had to be plowed a second time because excess snow was left on the roads by a private contractor, thus delaying snow removal in other areas.

Property owners can be ticketed and fined for violating this ordinance. This is the last thing the Village wants to do is ticket a property owner.

Safety is our primary concern. Help out. Have your snow plow contractor help out too by keeping your snow on your property.



## And It All Came Tumbling Down



## And Coming Soon at 30900 Telegraph Rd. DaVita Dialysis

While the Village was entangled in litigation to get the Depository torn down, out of nowhere came a developer with a proposal to erect a new building to take the place of the old one.

The developer even had a long term tenant ready to fill the space.

In order for this proposal to come to fruition, a number of variances were needed to replace the existing building, which had a number of variances itself.

So simultaneously with the demolition proceedings, the Village ap-

proved a site plan for a 5400 sq. ft. building to replace the 6700 sq. ft. Depository.

The Zoning Board of Appeals also granted the needed variances, especially the 55' rear yard setback variance. The existing building was right on the lot line.

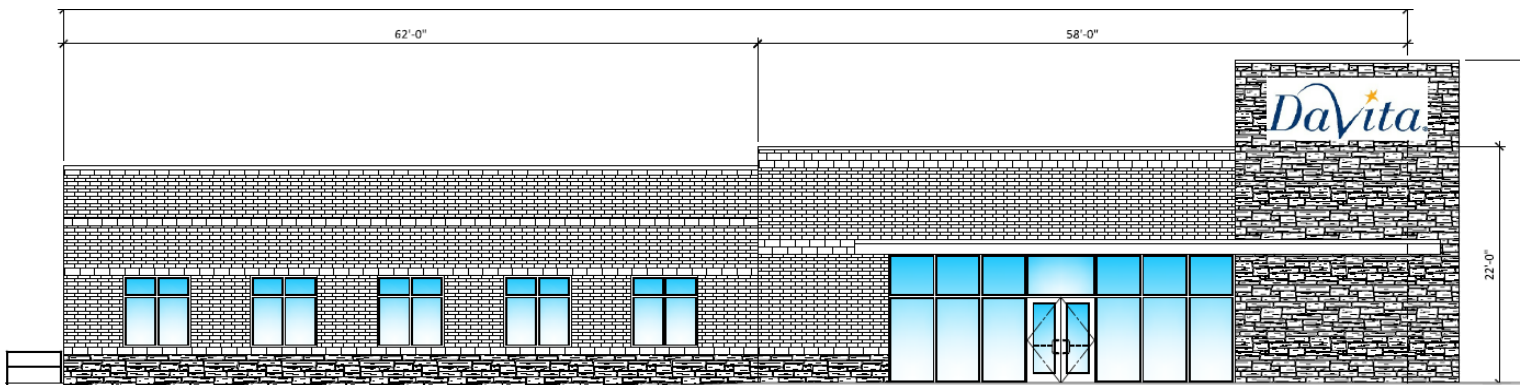
The Design Review Board approved the building design and materials. The developer was open to a number of suggestions for materials as the building sits on a dominant location. At the main intersection of the

Village.

This site is a difficult one. Back in the early 1980s, a lot split occurred that created this .46 acre site. The original tenant was a bank. A future addition created room for The Depository.

Further improvements will be made to correct drainage and provide additional landscaping.

A new lighting plans and signage still require approval.



## GUIDELINES FOR DISPOSING OF LATEX PAINT

---

In an effort to help residents dispose of those half empty paint cans and limit the number of cans dropped off at SOCRRA, please note **latex paint is NOT a Household Hazardous Waste**. It may be discarded on the regular Thursday rubbish pick up. However, because latex paint is considered a liquid, it must be dried first to turn it into a solid. ***Because oil-based paint contains dangerous solvents, it is important to remember that these procedures can only be used with latex paint.***

Here are the recommended options:

**Natural Drying** - With paint cans that are less than a quarter full, simply remove the lid and place the can in a well-ventilated area. The remaining paint should be dry within a few days. Once dry, the hardened paint can be chipped out and placed with the trash. The empty paint can, whether metal or plastic, should be placed in the recycling bin.

**For paint cans that are more than a quarter full, you'll need:**

**Paint Hardener** - You can pick up paint hardener at any local hardware or paint store. Once you have your paint hardener, there are a few simple steps to follow:

1. Cover your work surface to protect it from paint splashes
2. Add a paint hardener to the can – read the directions on the packet to find out how much hardener you need to add. Typically one packet will harden up to 2/3rds of a gallon of paint.
3. Stir and mix thoroughly. After a few minutes, the paint will have a chunky, oatmeal-like texture



You can now dispose of the dried paint in the trash. The empty paint can be placed in the recycling bin.

**Kitty litter** - This common, household absorbent works well in removing the moisture from latex paint. How much kitty litter to add depends on the makeup and age of the latex paint. In most cases, start with a cup or two and add as needed. Stir thoroughly and after a short time, the paint will thicken. Dispose of the hardened material in the trash and recycle the empty paint cans.



**Saw Dust, Mulch, Small Animal Bedding, & Sand** – These are other common absorbents that can be used to thicken and solidify latex paint. Use them the same way you would use kitty litter. Remember to recycle empty paint cans **and lids** after disposing of the hardened paint.

Some general tips to consider before drying latex paint:

- To limit waste buy only what you need – ask at the paint stores, they are the experts!
- Store cans in a proper place, properly sealed, so the paint doesn't leak or dry out.
- Storing paint cans upside down can help keep paint fresh.
- Try to use all of the paint.
- Donate any leftover paint to local schools, churches or theatre groups.

## Common Complaints From Village Residents

There are three common complaints the Village hears.

1. Barking Dogs - Did you know the Village has an ordinance that prohibits incessant barking. Not everyone loves dogs and even those that do can get annoyed with constant barking.

Sometimes a simple phone call to the offending party can resolve the problem. If not, call Animal Control at 248.540.3420. If they are not open, give our police dispatch a call at 248.626.5444. Our police officers are pretty good at finding the errant dog.



2. Speeding - The complaints soared when Lahser Road was closed between 13 & 14 Mile Roads. Our police officers were working hard to keep infractions down. And the increase in tickets issued showed that effort.



But what was most interesting are the number of residents who are stopped for speeding or running the stop signs. Let's be safe. Keep the speed to 25 and obey the stop signs.

3. Deer - Yes, the deer herd has increased over the past five years. And yes, they eat our flowers and vegetables. They're especially fond of hostas.

Unfortunately, there's not much that can be done. Trying to cull the herd may have only a temporary effect. Plus, the Village does not allow hunting. The risk to our residents is too great.



## HAPPENINGS AROUND TOWN

### JANUARY

#### Birmingham

Birmingham Restaurant Week - Jan. 25-29

Village Players - "Vanya & Sonia & Masha & Spike" Jan. 15-18, Jan. 22-24 & Jan. 29-31 248.644.2075

### FEBRUARY

#### Birmingham

Restaurant Week - Birmingham Feb. 1-5

Birmingham Concert Band - "Earth Wind & Fire" 3:00 p.m. Feb. 21 - Lutheran Church of the Redeemer

### MARCH

#### Birmingham

"To Kill a Mockingbird?" at the Village Playhouse Mar. 4-6 Mar. 11-3 & Mar. 18-20 248.644.2075

### EMERGENCY PHONE NUMBERS

<b>Police &amp; Fire</b>	<b>9-1-1</b>
<b>Police (dispatch)</b>	<b>248.626.5444</b>
<b>Police (office)</b>	<b>248.626.9672</b>
<b>Fire (office)</b>	<b>248.626.9862</b>
<b>DTE (electric)</b>	<b>1.800.477.4747</b>
<b>Consumers (gas)</b>	<b>1.800.477.5050</b>

The Bingham Farms Post is published quarterly by the Village of Bingham Farms.

Editor: Kathryn Hagaman  
clerk@binghamfarms.org

The next edition of the Post is scheduled for April 2016. Deadline for submission of articles is March 15, 2016.

All articles must be submitted in writing to the Village office. The editing of articles is the sole discretion of the Village staff.  
Website: [www.binghamfarms.org](http://www.binghamfarms.org)