



# THE BINGHAM FARMS POST

Spring, 2017

## Single Stream Recycling On The Way

Beginning in August 2017, the Village will begin a new recycling program that should be easier for residents to use yet increase the amount residents recycle.

All Village recycling is sent to the SOCRRA facility (Southeastern Oakland County Resource Recovery) facility on Coolidge Highway in Troy. SOCRRA over that past year has been working on converting that facility into what is known as a Single Stream facility.

This means that the sorting will be done mechanically at one location. There will no longer be a need for residents to sort their recycling nor for the recycling folks to sort recycling material at the street.

Additionally, the sanitation trucks have been retrofitted so that they can automatically pick up the recycling can and not have to get out of the truck.

There's more. The new recycling carts will have wheels. And they have a 65-gallon capacity. This means residents will simply roll out the carts to

the street, wait til they're emptied and then roll them back to their storage area. How simple can it be?

The cost of the recycling cart will be \$42. At this point in time, the Village Council intends to roll that cost into its 2018 Fiscal Year Budget. It is not known at this point what impact this one-time added cost will have on the Budget.

A few other items to note. While Single Stream Recycling will make it much easier to recycle, there is a requirement that containers **MUST** be rinsed. Also, there may be a tendency to mix up regular food items and put those in the recycling carts. This is prohibited. The sorting equipment cannot sort food products out of



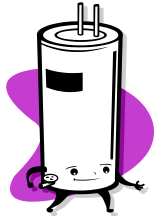
**Cont. on Pg. 5**

## Large Item Pick Up Scheduled

Get ready. The Village's semi-annual, free, large item pick up is set for **Thursday, June 8th**. All items should be at the street by 7:00 a.m. Large bulky items may be placed at the street the weekend before the pick up.

For new residents, twice a year, the Village offers a large item pick up at no charge. This is a time to dispose of large items that normally are not included in the regular Thursday pick up.

This includes sofas, washing machines and hot water heaters.



It does NOT mean that it's time to clean out all the rubbish stored in your home. In the past, residents who were moving out of their home figured they could put everything out at the street. One resident had boxes and rubbish lined all along the street and half way down the driveway.

Car Trucking has the authority to bypass homes that have an excessive amount of items at the street. If you are in need of a roll-off, call Car Trucking.

Should you have any questions, please feel free to contact the Village office or Car Trucking at 586.791.8480 to avoid any problems on the big day.

See Pg. 11 for more information.

## RESIDENT SURVEY COMING

Coming soon is a Village wide survey to get the pulse of the community. How's the Village doing? What can we do to foster Bingham Farms as a great place to live?

At its February Council meeting, the trustees agreed the survey would be a good way to get feedback from its residents.

The survey will be disseminated via the Village's email blast system and will also be available on the Village website.

The survey is short and should take just a few minutes to complete.

The process for return of the survey is still under development.

Residents will be notified via email blast when the survey is ready to go.

Any questions, please feel free to give the Village office a call at 248.644.0044.



## VILLAGE COUNCIL MEETING DATES

**April 24**  
**May 22**  
**June 26**

**All meetings start at 7:30 p.m.**

## Check Contractors Working in your Home

This is normally the time of year that residents look at sprucing up their homes, both inside and out. This is a wonderful idea.

However, one should take a few precautions before selecting a contractor. There have been times when construction workers, maintenance personnel and domestic helpers have taken advantage of certain opportunities and removed items from a residence.

The Police Department would like to remind everyone that, before hiring a contractor, please check with your neighbors and the Better Business Bureau (<http://detroit.bbb.org>) for references.

Also call the Southfield Building Dept. (248.796.4100) to make sure that the contractor is licensed, that he has pulled the proper permits and that the work is set up for the required inspections.

Note that in Bingham Farms, construction cannot begin before 7:00 AM and must stop at dusk.

Finally, take some simple actions to secure your valuables when workers are in your home; such as locking up jewelry, currency and other valuable items so that they are not visible and not easily stolen.



## Library Notes

Baldwin Library offers a wide variety of programs for all ages from birth to adult.

Children are invited to participate in weekly story times and book clubs, and to participate in Poetry in Motion on Saturday, April 8 at 10:30 a.m.

Special programs for teens include a Henna Body Art program on Thursday, April 13 at 7:00 p.m., and a celebration of International Tabletop Game Day on Saturday, April 29 from 1:30 to 4:30 p.m.

Adults are invited to gather ideas for planting spring porch pots on Wednesday, April 19 at 7:00 p.m., hear about the life of Mary Cassatt on Tuesday, April 25 at 7:00 p.m., and learn about Healthy Couponing on Thursday, May 18 at 7:00 p.m.

Visit the Friends of the Library Spring Book Sale for great deals on books and media for all ages. The sale runs from Friday, May 5 (Member Preview Night) to Monday, May 8.

Be sure to sign up for this year's Summer Reading program. Join us for our Annual Summer Reading Open House on Friday, June 16 from 1 to 4:00 p.m.

Find more information about the Library and its programs at [www.baldwinlib.org](http://www.baldwinlib.org).

## Library Renovation Update

After months of construction work, the Library is excited to unveil its new Adult Services area this June. Visit the Library on **Sunday, June 11 from 12:30-2:30 p.m. for the Grand Opening** of the new Adult Services department. Enjoy refreshments and tours of the new spaces; representatives from the Library Board will participate in the grand-opening ribbon cutting ceremony at 1:00 p.m., and hear the Fleur de Lys String Ensemble play at 2:00 p.m.

Here's what has been happening:

- ♦ Framing and installation of glass windows is expected to be complete at the end of March.
- ♦ Framing and electrical work in the ceiling has been completed. Drywall installation is in progress. The new ceilings are higher than before and include many coffers to feature the unique architecture of Gunnar Birkerts's original design.
- ♦ The north wall of the book return sorting room has been removed. A glass wall will be installed to allow people to view the book sorter in action while inside the Library.
- ♦ The new computer lab and makerspace are nearing completion and will be opened to the public at the beginning of April. Glass walls, lighting, and carpeting will be installed later this month.
- ♦ In mid-April, construction on the new Claudia E. Ireland Reading Room in the Grand Hall will begin. Ms. Ireland was a longtime supporter and Board member of the Friends of the Baldwin Public Library. Two rooms connected to the Grand Hall will be combined into one large reading room that will house biographies, poetry, and anthologies. This room will have a seating area for visitors.

For current updates on the project, please visit [www.baldwinlib.org/renovation](http://www.baldwinlib.org/renovation) or sign up to receive our periodic email updates.



## President's Letter

We see them patrolling the streets and at times, they may have a car stopped, probably for a moving violation. But how much do you really know about the Franklin Bingham Farms Police Department? I put a few questions to our Police Chief Dan Roberts. What follows is Part 1 of a series describing our Police Department.

### 1. What is the make-up of our Police Department?

The Franklin – Bingham Farms Police Department is staffed with ten (10) Full Time police officers, including the Chief of Police. In addition, we currently have two paid Part Time officers who are fully sworn and meet all State of Michigan law enforcement certification requirements.

The police department also uses the services of eight (8) Reserve Police Officers who *volunteer* their time. They always work side by side with paid law enforcement staff. Our Reserve Officers have a diverse background; some are engineers, some are retired police officers, some run private businesses, etc. We are very proud of our volunteer Reserve Corps, as they are of great assistance during major special events and other times throughout the year when the

regular officers need more assistance in handling law enforcement duties.

### 2. What are the challenges to finding Qualified Police Officers?

Over the past ten years, economic benefits for Police Officers nationally have been cut dramatically, making it hard to attract qualified individuals into the law enforcement profession, so we feel proud to have been able so far to attract such high quality staff.

Like many police agencies in the State of Michigan, our department requires officers to have at least two years of college before they can apply for a position. In addition, the candidates must have completed a state certified police academy before they can apply for one of our Police Officer positions.

The State of Michigan, through the Michigan Commission on Law Enforcement Standards (MCOLES), strongly regulates the minimum training standards that all officers must have. MCOLES also requires annual proficiency exams in such areas as the law, use of

deadly force, and firearms qualifications, just to name a few.

Our department has an aggressive in-service training program and we send all of our officers to advanced coursework in a myriad of law enforcement and national security disciplines.

The Village Council certainly agrees with the Chief regarding the professional caliber of our police officers and appreciate all they do.

More on our police department in future newsletters.

Jeffrey D. Modell, Esq.  
Village President



### CHECK OUT THE NEW POLICE DEPARTMENT FACEBOOK PAGE



<https://www.facebook.com/franklinbinghampd/>

## KEY STATS FROM POLICE ANNUAL REPORT

ACTIVITY	FRANKLIN	BINGHAM	SAD/OTHER	TOTAL
Calls for Service	1930	1035	411/81	3457
Traffic Citations	389	1629	33	2051
Traffic Accidents	85	99	30	214
Written Reports	217	337	70	624
Part A	15	12	1	28
<b>Totals</b>	<b>2636</b>	<b>3112</b>	<b>626</b>	<b>6374</b>

**Part A Complaints** —more serious matters

**SAD** is in Bingham Farms Business District only



## Is There Speeding on Bingham Rd.?

Of course there are drivers who exceed the speed limit. But not as many as one would think.

Recently, a resident came to a Village Council meeting to register his complaint. Council discussed the issue with the Police Chief, who was in attendance, as to ways to objectively define the problem.

The Chief borrowed radar equipment from another municipality, which recorded traffic speeds during a one-week period in February. The equipment was affixed to a speed limit sign northbound on Bingham Road.



The results were most revealing.

# of cars counted	480	
Cars travelling		
Under 35 mph	470*	98%
Between 35 & 45 mph	10	2%

\*Of those cars in the under 35 mph category, 300 drivers or 64% were travelling under 25 mph.

The Police Chief reported that these numbers do not indicate a speeding problem. Of course, there are a few drivers exceeding the speed limit, but that number is not excessive.

It is difficult for pedestrians to adequately judge vehicle speeds because there is a major difference with the walker's speed and a vehicle speed. Often it will appear cars are going faster than they actually are.

Police will continue periodic enforcement on speeding and stop sign infractions on major roads in the Village.

**LARGE ITEM PICK UP  
JUNE 8, 2017**

**ALL ITEMS TO THE  
STREET BY  
7:00 A.M.**

**See Pg. 9 for details**



**Have you seen Next, Your Place to Stay Active & Connected, lately?**

Join more than 1500 members at a warm and inviting center that offers programs, classes, travel and one-of-a-kind opportunities to help keep anyone 50 and better active and connected.

Located at 2121 Midvale Road in Birmingham, Next serves the Villages of Bingham Farms, Beverly Hills, Franklin, and the City of Birmingham.

Now with evening and Saturdays hours, Next offers more programming than ever before: art classes from beginner to advanced, fitness offerings for every level, and unique programs from music to cooking.

In addition, every Thursday evening at 6:00 pm Next hosts an exciting and informative lecture on a wide range of topics. We have hosted professors from U of M, Oakland University, Wayne State, and MSU and also enjoyed speakers from outside the world of academics such as religious scholars, historians, judges and journalists to name but a few.

Coming this spring, Nolan Finley from the Detroit News, and Zoe Clark with Rick Pluta from National Public Radio's, "It's Just Politics", among many others.

With a strong commitment to community, Next has partnerships with several local organizations such as the Birmingham Public Schools, the Baldwin Library and the Principal Shopping District and brings collaborative programs to our members including inter-generational activities, book clubs and technology training.

Next also has a comprehensive Support Service Department that offers the loan of home medical equipment, transportation, nutritional support, information and referrals and much more!

At Next, we are here to help you, your neighbors or your parents age

**Cont'd on Pg. 6**

## A Bit of Bingham Farms History

In the beginning, the State of Michigan was sectioned into townships which encompassed 6 square miles. Bingham Farms, Beverly Hills, Franklin as well as the City of Southfield were part of what then comprised Southfield Township.

Residents in the various sections of the Township took a liking to their particular area, its topography and believed it was important to retain their identity.

Quickly, a few residents in each section of the Township filed to become separate Villages.

On October 4, 1955 the Village of Bingham Farms was born, officially approved by the residents living in the Village. Ninety-nine voters turned out to approve the Charter.

The residents were intent on preserving the simple, rural way of life and the character of the Village.

## Check the Rules Before Starting a Project

Before starting any project in your house or on your property, check with the Village first to see whether your project may need a permit or whether what you want to do is even allowed.

This quick call can save you time and money in the long run.

Some residents would like to put up a fence. The only fences allowed in the Village are to enclose a swimming pool and must be 4' in height.

Sheds too need the approval of the Design Review Board. A permit must be pulled from the City of Southfield Building Dept. They are the Village's building inspectors.

Save yourself some time and money. Call the Village at 248.644.0044 before you start anything on the outside of your home.

## Rouge in the News

Friends of the Rouge is involved in many types of environmental projects that benefit everyone in Southeast Michigan.

Right now, they are keeping a close eye on future funding for projects like the Great Lakes Restoration Initiative. They have been involved in various programs funded by federal grants.

Another concern is talk about selling the Warren Woods Golf Course, in Dearborn Heights, to a residential developer. It runs along the Middle Rouge River and Hines Drive. The concern is on the environmental impact and loss of public space.

Friends of the Rouge has disseminated a recent United States Geological Survey of eight rivers in the Great Lakes Basin. Human viruses were found at the highest concentrations in the Rouge, Clinton and Milwaukee Rivers. All three rivers had greater than 25 percent urban influence and more than 2900 people per square kilometer.

More information can be found at [www.therouge.org](http://www.therouge.org).



## New Recycling Carts Cont. from Pg. 1

the processing line

No hazardous waste items or electronics are to be placed in the recycling bins.

More information will be coming as the rollout nears.

## Vials of Life For Seniors

The Franklin Bingham Fire Department has put together a small plastic bottle, the contents of which will aid them to properly respond to a senior medical emergency.

The vial holds valuable medical information for a resident. It includes an information sheet and 2 personal profile sheets that hold critical information regarding medical history and current medications. Fill out the profile sheet, place the vial in the freezer and make sure it is easily visible when the freezer door is opened.

The vial also contains 2 display magnets that alert first responders that you have a Vial of Life completed. Place one magnet on your refrigerator door. Place the sticker adjacent to the window by the front door.

The Vial of Life is available at the Village office. Stop by and pick one up.

These vials can shave off minutes for first responders trying to assess your medical situation in an emergency.



## Get Ready for More Local Road Construction in Near-by Communities

As most folks are aware, summertime means construction-time. While most of the construction is outside the immediate Bingham Farms area, it's not going to be easy getting around Birmingham.

Over the next several years, the City of Birmingham will invest in the City's infrastructure by addressing the needs in the downtown Central Business District with water system, sewer system and streetscape upgrades. This year efforts



## Having a Graduation Party - Play It Safe

Senior Prom and graduation are landmark events in most teenagers' lives. Though these two special moments symbolize both maturity and pending adulthood, parents must remember that when it comes to drinking, teens are still legally underage.

The Birmingham Bloomfield Community Coalition along with other Oakland County coalitions are again launching the "Parents Who Host, Lose the Most: Don't be a party to underage drinking" public awareness campaign. It is designed to help parents consider the dangers of teenage drinking parties.

Simply stated: parents who provide alcohol to their children's friends under any circumstances, even in their own homes, are breaking the law; parents who knowingly allow a person under 21 to remain in their home or on their property while consuming or possessing alcoholic beverages can be prosecuted; and parents can be sued if they give alcohol to anyone under 21 and they in turn hurt someone, hurt themselves or damage property.



will focus on the Central Business District (portion from Oakland north of Maple to Brown south of Maple) into larger areas involving both Old Woodward and Maple. Learn more about the project scope and design at

[www.bhamgov.org/downtowninfrastructure](http://www.bhamgov.org/downtowninfrastructure).

Meanwhile, a major road project in Southfield and Beverly Hills begins on Evergreen Rd. from 11 Mile to 13 Mile. It includes the intersection at 13 Mile Rd. The orange barrels are already in place.

The best advice is to add extra time for your trips and avoid rush hour traffic.

## ***The Fight Continues Against The West Nile Virus***

The final numbers of human cases for West Nile Virus are in. The numbers show there is still a chronic problem. In fact, the number of cases in Michigan increased.

Overall in Michigan, 43 cases of human infection were reported with 3 deaths. In Oakland County there were 9 cases, up from 3 in 2015. This includes 2 people who died as a result.

The West Nile Virus is spread to humans when bitten by a mosquito that carries the virus.

There is no vaccine for West Nile Virus, so the best defense remains a good offense. It is important for every person to protect himself.

So take the following steps to lower your chances of infection.

- ♦ **Reduce areas where mosquitoes breed,**
- ♦ **Repel to protect against mosquitoes, and**
- ♦ **Report potential mosquito breeding areas.**

Other measures that can reduce the risk of contracting the virus include:

- ♦ Repair all holes in windows and screens to keep mosquitoes out of your home.
- ♦ Empty water from mosquito breeding

sites such as buckets, barrels, cans, old tires, or similar sites.

- ♦ Avoid being outdoors when mosquitoes are most active (dawn and dusk).

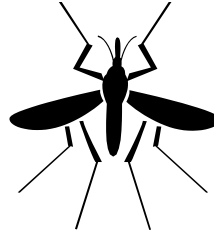
- ♦ Wear light colored, long-sleeved shirts and long pants when outdoors.

- ♦ Apply insect repellants that contain the active ingredient DEET to exposed skin or clothing. Always follow the manufacturer's directions for use. Avoid applying repellent containing DEET on children less than two years of age.

Dead birds can also be an indicator of West Nile Virus infected mosquitoes are in the area. To report dead birds, call the Oakland County Health Division Hotline at 1.877.377.3641. Wear gloves to protect yourself from direct contact with the bird and dispose of it properly.

For updates on West Nile Virus, log on to:

[www.michigan.gov/westnilevirus](http://www.michigan.gov/westnilevirus)  
or  
[www.oakgov.com](http://www.oakgov.com).



## ***Village Needs Help From Residents***

The question on the minds of a number of residents is, who is littering the Village roadways? Unless one sees someone do it, it's impossible to track down the culprits.

So, what to do? This is an area where residents can easily help. When you are out and about, if you would pick up a few pieces of litter, it would be a great help. If everyone did this, the problem would be taken care of and the Village would look great.



If you should see someone toss anything, get a description of the vehicle and the license plate number. Call the police and relay the information.

The number for dispatch is 248.626.5444 and the police office is 248.626.9672.

## ***Bits N Pieces***

- Get email blasts from the Village office or the Police Department. Log on to the Village website, ([www.binghamfarms.org](http://www.binghamfarms.org)) and click on the link "Stay Informed" at the bottom of the home page.
- Latex Paint is not a hazardous material. Use kitty litter to dry it up and dispose with regular trash.
- Village Tax Bills will be mailed out on June 30. They are due in the Village office by August 31st without penalty. **Postmarks are NOT accepted.**
- Have rubbish out at the street by 7:00 a.m. every Thursday morning.
- Fences are not allowed unless around a pool enclosure.
- Dog runs totaling no more than 250 sq. ft. and no more than 4-feet in height are allowed. Must get Council approval.



**CELEBRATE  
EARTH DAY  
APRIL 22nd**

## ***Next Cont'd from Pg. 4***

safely at home where there is comfort and familiarity.

Take a look at all Next has to offer on the newly designed web site [www.BirminghamNext.org](http://www.BirminghamNext.org) or stop in for a tour. You will quickly see why more than 1500 members say Next is a great place to belong!

## ***Help Stop Illegal Dumping***

Every year the Village picks up the tab to haul away debris dumped in the Village rights-of-way. It ranges from a truck full of old tires to wood chips to tree trunks.

If you see anything suspicious, such as a slow-moving, fully loaded truck, call police dispatch at **248.626.5444** immediately. Getting the license number or a description of the car or truck will help police track down the scofflaws.

If caught, the culprits face stiff fines, and must remove the debris or reimburse the Village for its costs to remove the materials.



## ***HOW TO DISPOSE OF CFL & LED BULBS***

Did you know that CFL & LED Light Bulbs contain hazardous materials? Did you know those burned out bulbs can be returned to mega stores such as Lowe's and Home Depot? And it's free disposal.

While the Village participates in a Household Hazardous Waste Program with SOCRRA (South Oakland Resource Recovery Authority) on Coolidge Highway, it costs the Village \$30 per car. Recently, a resident dropped off 3 of these bulbs. That's all. So the cost to the Village was \$30.

For economic reasons, please wait until you have a number of other products before dropping off light bulbs to SOCRRA.

Better yet, just bring them to a local Lowe's or Home Depot store and drop them in the recycling bin at any time and there is no charge.



## ***Public Notice Noxious Weeds***

It does not happen often, but there are times when property owners move away and the property is not maintained, especially mowing the grass. Grass that reaches a height of eight inches or more is considered a noxious weed.

Before the Village steps in to remove the violation, an annual notice is published in the Eccentric newspaper advising owners of the noxious weed ordinance. After the newspaper notice, the Village has the ability to act.

When an infraction occurs, a letter is sent to the property owner(s) giving them ten days to rectify the situation. If not resolved within that time period, the Village will contract with a landscape company to cut the lawn as many times as needed during the course of the season.

The notice reads:

"Pursuant to Section 95.36(A), the Village hereby publishes notice to property owners that noxious weeds existing on a property as of May 1, 2015 may be cut, mowed or removed by the Village, with the property owner charged with the Village's actual and administrative costs and expenses in doing so, as many times that calendar year as necessary to keep the property free from nox-

ious weeds.

Specifically, the Village will provide written notice to owners of property upon which noxious weeds exist, and to occupants and agents of said owners known to the Village: (i) to cut, mow or remove the noxious weeds within 10 days of the date of the notice, (ii) to thereafter maintain the property free from noxious weeds, (iii) that upon a failure or refusal to do so, that the Commissioner, by Village employees or contractors, will enter upon the property and perform the required cutting, mowing or removal, (iv) that payment of the Village's actual and administrative expenses incurred in cutting, mowing or removal is the responsibility of the property owners and is secured by a lien on the property, (v) that the existence of noxious weeds is a public nuisance and (vi) notice of any public nuisance hearing that may be scheduled before the Village Council under Section 95.08."



### **WANT TO BE INFORMED AND RECEIVE SPECIAL ALERTS?**

**Register by way of the Village  
website at:**

**[www.binghamfarms.org](http://www.binghamfarms.org)**

**Click on the "Stay Informed" link**

**Receive warnings, water alerts,  
police notices and more via  
email.**

**Sign up today.**

### ***STUDENTS, DO YOU NEED COMMUNITY***

#### ***SERVICE HOURS?***

***We need volunteers to help pick  
up trash along Village roads.***

**Your hours, your schedule.**

***Call the Village office for more  
info.***

**248.644.0044**



**REQUEST TO BE ADDED TO THE  
PERMANENT ABSENTEE LIST**

Due to recent challenges to Michigan election laws, the Clerk's Office needs to have a written request if you wish to be added to the Permanent Absentee Voter List. Please check the box below and return the form to the Clerk's Office in one of the following ways:

FAX request to the Clerk's Office at 248-540-3427

MAIL request to the Clerk's Office at:

Sharon Tischler, Southfield Township Clerk  
18550 W. 13 Mile Road  
Southfield Township, MI 48025-5262

☐

YES, please add my name to your Permanent Absentee Voter List. I understand that I will automatically receive an Absentee Ballot Application prior to each upcoming election until such time that I should request to have my name removed. I understand that on the application I will be required to check a reason for requesting a ballot. I further understand that if I choose to be on the permanent list, and I automatically receive an application for an Absentee Ballot, that *I could still vote in person at the polls simply by not returning my absentee application for processing.*

-----

Signature

Date: MM/DD/YY

Please Print Name

Phone Number

Street Number

City

State/Zip Code



**SOUTHFIELD TOWNSHIP**  
**ELECTION WORKERS**  
**NEEDED**

**PAID POSITION**

**\$165-\$185**



**"INTERESTED"**

**APPLICATIONS AVAILABLE**

*Applications available front page, middle column under third heading down Election Information, second paragraph  
click on Election Information and go to the bottom of the page.*

**Questions call: (248) 540-3420**

## GUIDELINES FOR DISPOSING OF LATEX PAINT

In response to questions regarding what to do with old latex paint, SOCRRA has developed a few simple guidelines. Latex paint is technically not a Household Hazardous Waste, but it is considered a liquid and therefore cannot be placed in with the trash. It must be turned into a solid. To do this, the paint must first be dried or hardened before it is disposed of in the trash, and the empty paint cans placed in the recycling bin. **Because oil-based paint contains dangerous solvents, it is important to remember that these procedures can only be used with latex paint.**

**Natural Drying** - With latex paint cans that are less than a quarter full, simply remove the lid and place the can in a well-ventilated area. The remaining paint should be dry within a few days. Once dry, the hardened paint can be chipped out and placed with the trash. The empty paint can, whether metal or plastic, should be placed in the recycling bin.



### For paint cans that are more than a quarter full, you'll need:

**Paint Hardener** - You can pick up paint hardener at any local hardware or paint store. Once you have your paint hardener there are a few simple steps to follow:

1. Cover your work surface to protect it from paint splashes
2. Add a paint hardener to the can – read the directions on the packet to find out how much hardener you need to add. Typically one packet will harden up to 2/3rds of a gallon of paint.
3. Stir and mix thoroughly. After a few minutes, the paint will have a chunky, oatmeal-like texture.

You can now dispose of the dried paint in the trash. The empty paint can be placed in the recycling bin.

**Kitty Litter** - This common, household absorbent works well in removing the moisture from latex paint. How much kitty litter to add depends on the makeup and age of the latex paint. In most cases, start with a cup or two and add as needed. Stir thoroughly and after a short time, the paint will thicken. Dispose of the hardened material in the trash and recycle the empty paint cans.



**Saw Dust, Mulch, Small Animal Bedding, & Sand** – These are other common absorbents that can be used to thicken and solidify latex paint. Use them the same way you would use kitty litter. Remember to recycle empty paint cans **and lids** after disposing of the hardened paint.

Some general tips to consider before drying latex paint:

- To limit waste buy only what you need – ask at the paint stores, they are the experts!
- Store cans in a proper place, properly sealed, so the paint doesn't leak or dry out.
- Storing paint cans upside down can help keep paint fresh.
- Try to use all of the paint.
- Donate any leftover paint to local schools, churches or theatre groups.

From SOCRRA website

[www.socrra.org](http://www.socrra.org)

## ***LARGE ITEM PICK UP REGULATIONS***

**Date:** Thursday June 8, 2017

**Time:** All large items at street by 7:00 a.m.

**Please Note: For the large item pick up ONLY**, items such as couches, washing machines etc. may be placed at the curb as early as May 29.

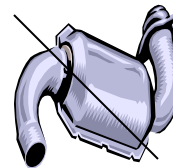
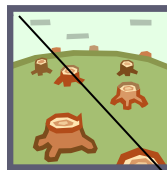
### **ACCEPTABLE ITEMS**

- \* Large appliances, furniture and hot water heaters  
(Refrigerators & freezers must have Freon removed prior to pick up) (Doors must be removed)
- \* Only small tree stumps
- \* Brush and tree branches must be bundled and tied; the length may not exceed four feet
- \* Rolls of carpet and linoleum must be tied together with the length not to exceed four feet
- \* Disposal of construction materials is limited to one 32-gallon trash container



### **UNACCEPTABLE ITEMS**

- \* Large tree stumps
- \* Hazardous waste
- \* Automotive parts
- \* Tires
- \* Loose gravel
- \* Large amounts of construction material & loose items



Car Trucking has the right to refuse to pick up excessive amounts of materials. If you have a large quantity of items, please call Car Trucking at **586.791.8480** and make special arrangements. Car Trucking does have dumpsters (roll-offs) available.

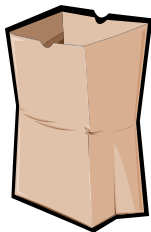
## Compost season begins

Now that the snow has melted and spring is officially here, the weekly pick up of compost begins on April 6th and will run through the end of November.

Compost materials include leaves, grass, plants and small bushes.

All compost should be placed in **brown paper bags**. Compost placed in plastic bags will go in with the regular trash as the plastic does not disintegrate quickly.

Tree limbs and branches should be tied into bundles no more than 4' in length. Car Trucking will not pick up anything that is not tied.



### VILLAGE COUNCIL MEETING DATES

**April 24**

**May 22**

**June 26**

**All meetings start at 7:30 p.m.**

## Happenings Around Town

### Birmingham

**Farmer's Market** - every Sunday May 7- October 29 9:00 am-2:00 pm. Municipal Lot 6 - North Old Woodward

**Art Birmingham** - May 13 & 14- Shain Park 10:00 a.m. - 6:00 p.m.

**54th Birmingham Village Fair**— June 1 - June 4 Streets surrounding Shain Park

**In the Park Summer Concerts** - Wednesdays, June 21 - August 16 7:00 p.m. Shain Park Concert Hotline 248.530.1650

**Movie Nite in Booth Park** - June 23 - 7:30 p.m. Movie begins at dusk

**Fireworks** - Lincoln Hills Golf Course - July 3 Gates open at 7:00 pm. Rain date July 5.

### Beverly Hills

**36th annual Memorial Day Parade & Carnival** - May 29 Beverly Park - starts at 11:00 am.

**Rouge River Day** - May 20

## What kind of Spring will it be?

The Farmer's Almanac came out with its spring forecast and it's calling for chilly and wet weather.

### April

**1st—3rd** Thunderstorm

**4th-7th.** Fair Skies

**8th-11th.** Unsettled

**12th-15th.** Squally

**16th-19th.** Sunny

**20th-23rd.** Showers

**24th-27th.** Storms.

**28th-30th.** Unsettled.



### May

**1st-3rd.** Sunny

**4th-7th.** Hopefully dry for Derby Day in Louisville

**8th-11th.** Heavy Rains

**12th-15th.** Mixed clouds and sun

**16th-19th.** Showers

**20th-23rd.** Fair

**24th-27th.** Squally.

**28th-31st.** Increasing clouds, dry for Indy 500

The Bingham Farms Post is published quarterly by the Village of Bingham Farms.

Editor: Kathryn Hagaman  
clerk@binghamfarms.org

The next edition of the Post is scheduled for July 2017. Deadline for submission of articles is June 15, 2017.

All articles must be submitted in writing to the Village office. The editing of articles is left to the sole discretion of the staff.

Website: [www.binghamfarms.org](http://www.binghamfarms.org)