



THE BINGHAM FARMS POST

Summer 2017

New Recycling Program Coming Soon

Recycling is getting easier. Soon, residents will be able to put all their recycling materials into one cart. That means newspapers, glass, cans and bottles can all go into one bin.

This Single Stream Recycling Program is set to launch in Bingham Farms in mid-September. It is the direct result of improvements SOCRRA (South Oakland County Resource Recovery Authority) is making to their facility in Royal Oak.

All the recycling will be dumped onto a conveyor belt and then automatically sorted into different areas.

Residents will also get brand new recycling carts. The good news is that this cart will hold everything and it's on wheels so it can be easily rolled out to the curb.

A word of caution. Do not put any food, junk, liquids or other non-recyclable materials in this cart. That's for your regular trash can. This might take a bit of an adjustment.

For the first couple of weeks, the drivers of the recycling trucks will be inspecting the carts prior to collecting them to make sure there are no prohibited items in the cart. If there are, the cart will not be picked up and a note will be left indicating what the problem is.

These 65-gallon carts hold more than three times Bingham Farms' current bin system. The cart measurements are

- 24" wide,
- 27" front to back and
- 41.5" tall.

Compare this to the SOCCRRA one bin which holds 18 gallons. They measure

- 23" wide,
- 16" front to back and
- 14.25 inches tall.

So the new carts are basically the same width but they are bigger front to back and taller.

If you're planning to keep the recycling cart in the garage, do a little measuring to make sure you can fit the



carts inside. You may have to rearrange some things.

Another plus is that residents will not be charged for the first cart. Bingham Farms received a grant from the MDEQ and the Recycling Partnership to cover the costs of the new carts. Costs have been based on one cart per household.

Replacement carts or additional carts will be at the expense of the resident. The estimated cost for the cart is \$45.

Check the SOCCRRA website for more information. There's a great FAQs sheet on the SOCCRRA website. Copy the link below to read all about the new system.

http://socrra.org/documents/Mixed_Recycling/Cart%20FAQ.pdf

Remember, sometimes it takes a bit of time to get used to something new. The Village asks that you try it and you just might really like it.

Village Survey Results

The results of the Village's Resident Survey are in. The overall conclusion is that the majority of residents, over 90%, are satisfied with the level and quality of services provided, from police, fire, trash removal and administrative staff.

Trustee Templeton reported the results to the Village Council at their June meeting and there will be a follow up discussion at their July 24th meeting. He indicated this was a successful endeavor. In total, 126 residents responded to the online survey which was sent via email blast and posted on the Village's website.

The Council invites residents to come to a Council meeting if there are any topics they would like to address.

The survey asked respondents to rate statements on a scale of 1-5; 5 being the highest rating (excellent), 1 being the lowest (poor). The survey also provided an opportunity for respondents to enter comments to go along with their ratings and many did so.

See Page 4 for a summary of questions and responses. All the comments will be posted on the Village website at

binghamfarms.org

Cont'd. on Pg. 4

**UPCOMING VILLAGE
COUNCIL MEETINGS
7:30 p.m.**

**July 24
August 28
September 25**



Next is your place for anyone 50 and better looking for a place to learn something new, discover a passion or meet friends. In addition, **Next** has a comprehensive Support Service Department. Call for more information: 248 203-5270.

Next is Moving Temporarily

From June 22st through August 21st Next is temporarily residing at Beverly Elementary School while the school district is doing some much needed infrastructure work on the Midvale building. Beverly School is located 18305 Beverly Road, right alongside the beautiful Beverly Park. It will be an exciting summer filled with new programming! Visit the Next website to stay up to date on all upcoming events. www.BirminghamNext.org

SAVE THE DATE: Boomer Summit - Saturday morning, October 14 Boomer Summit will bring hundreds of people together for meaningful presentations that matter most to Baby Boomers and beyond. Among the informative speakers are television host Chuck Gaidica who himself has "rewired" his retirement and Kerry Hannon, a nationally recognized expert on careers, personal finance, and business. Join us for raffle prizes, videos and personal stories for a high-energy, fast paced morning. *Thank you to the Jeffares Group for being the Premier Sponsor of this year's Boomer Summit.*

A Senior Must Have

They are called Vial of Life. The vials contain pertinent medical information to which emergency personnel can have immediate access.

The vial contains a medical sheet that identifies medical history and current medications. Fold the sheets and place them in the vial. Seal the vial and place it in your freezer, making sure the vial remains easily visible when the freezer door is opened.

Place a magnet on your refrigerator door and place the sticker adjacent to the entrance door of your home.

When emergency personnel see the stickers, they know you have a vial of life in your freezer and can immediately access the information.

The Village office has a supply of vials, so stop in and pick one up.

Have any questions? Call the Village office at 248.644.0044.



State Fireworks Law

With more municipalities veering away from fireworks celebrations, some folks may increase their private celebrations. The State changed its fireworks regulations over the years, so here are some reminders about the sale and use of fireworks in Michigan:

The Michigan Fireworks Safety Act *permits* the sale and use of flying and exploding fireworks. The Act requires that *licensed* vendors verify that all purchasers of the exploding and flying fireworks are at least 18 years of age; however, there is no age restriction on the user of the fireworks.

Some of the fireworks that are now legal under the Michigan Fireworks Safety Act include Roman candles, firecrackers, bottle and sky rockets, missile type rockets, aerial spinners, reloadable shell devices and singe tub devices with report.



Other fireworks remain illegal and cannot be sold or used in Michigan, including Cherry Bombs and M-80's. In addition, fireworks cannot be used on public property (schools, roadways, etc.), and the user of fireworks cannot be under the influence of intoxicants.

State law allows fireworks to be used any time, day or night, the day before a national holiday, the day of a national holiday, and the day after the holiday. **The Village prohibits excessive noise after 11:00 p.m.**

If you plan to light fireworks during the holiday season, have a charged garden hose or some other water supply nearby just in case there's an accidental small fire.

If you have any complaints about fireworks displays, call the police department at the non-emergency number 248-626-5444. Bingham Farms has been fortunate that residents have been considerate of their neighbors. Thank you.

Have a safe holiday.

The President's Letter

This President's Letter is a continuation of an in-depth conversation with Chief Roberts about the Franklin Bingham Farms Police Department.

What are the most frequent police activities?

Traditionally, the number one call for service involves residential and commercial burglary alarms. Almost all the time (99%), those are false alarms, but our officers will respond promptly to each alarm activation to ensure that the home or business is secure.

Our officers also focus greatly on traffic enforcement. Last year (2016), the officers handled 213 motor vehicle accident reports, with the vast majority of those accidents occurring on Telegraph Road in Bingham Farms. The officers also wrote 2,051 traffic violations last year, and made well over 200 misdemeanor arrests for such offenses as driving under the influence and driving while license suspended.

The police department also handles investigations of all types, including residential/commercial burglaries, larcenies of all types, and stolen automobiles. Last year was one of the lowest crime years in the history of the Bingham Farms Special Assessment District (SAD), which encompasses the commercial businesses on Telegraph Road. Only 13 felony incidents were reported in the SAD in 2016, compared to 111 in 1996, and 126 incidents in 1986.

A detailed summary of all criminal activity in our jurisdiction can be found in the Franklin – Bingham Farms

Police Department's Annual Report on the website.

What three steps would do the most to make citizens safer?

One of the major complaints the officers have relates to residents who have burglary alarms but fail to activate them when they leave their home. Burglary alarms are effective and efficient tools to deter break-ins and theft. The police department would much rather respond to an occasional false alarm call rather than having to investigate a burglary, but we still find that residents sometimes don't set their alarms for fear of accidental activation.

It should also be noted that the department has a robust house check program. All residents are encouraged to notify the police station when they leave town for a lengthy period so that the officers can conduct periodic checks of their residences.

The department also recommends the use of video surveillance cameras, both at our residential areas and in the commercial districts. Video surveillance cameras act as both a deterrent and they also are of great assistance in solving crimes when they occur.

Both of the villages we serve have exceptional mobile watch organizations, which are comprised of residents who volunteer their time to be extra eyes and ears on the streets. Our mobile watch organizations have been instrumental in reporting suspicious

activity to the police department, which has resulted in immediate response by the officers. We encourage ALL residents to be vigilant and report suspicious persons and/or activities in the village to the police department.

In summary, our officers keep busy with traffic enforcement. Speeding cars is one of the major complaints that is received from Bingham Farms residents. Unfortunately, the officers often stop residents for speeding and stop sign violations within the Village. Because there are many pedestrians on the Bingham Farms roads, and not many sidewalks, the police department encourages all motorists to slow down and use due care and caution on our roads.

More to come in future editions of the Village newsletter.

Jeffrey D. Modell, Esq.
Village President

Water Rates On the Rise

The Oakland County water Resources Commissioner (WRC) has set the water and sewer rates for Bingham Farms residents. These rates include the cost to purchase water from the Southeast Oakland County Water Authority, the cost for WRC to operate and maintain the water supply system and establish a major maintenance reserve.

So, beginning July 1, 2017, Bingham Farms residents will see just a 2% increase to \$26.17 per Mcf., a 6% increase from last year.

On the sewer side, the increase will be a just under 10% to \$25.65 per Mcf to cover operational and maintenance costs.

For homes still on well water, the flat rate quarterly sewer charge will be \$128.25, up from \$116.95 last year.



Fire Dept. Annual Meeting Set

Every resident in Bingham Farms is invited to attend the Franklin/Bingham Farms Volunteer Fire Dept. Annual Meeting.

It's set for Monday, July 17 at 7:30 p.m. at the Fire Department, located at 32707 Franklin Road, right next to the gas station.

It might be the perfect time to explore downtown Franklin too.



Community Survey Results

Rating Scale:

5 - Excellent 4 - Very good 3 - Good 2 - Not Good 1 - Poor

Percentages (%)

Category	5	4	3	2	1
Administrative Services	50	31	12	4	3
Trash Collection	74	16	2	6	2
Recycling Services	63	22	8	3	4
Police Service	82	8	2	1	5
Fire Safety Service	80	13	2	1	5
Ordinances are clear, concise...	32	35	21	8	5
Feel Safe Living in BF	64	21	10	4	2
BF is great place to live	67	21	3	6	3
BF s great place to raise a family	63	18	3	3	3
Overall appearance of BF	42	40	10	3	6
Efforts to inform residents about important issues	62	26	3	7	2
Efforts to residents' concerns into consideration on important issues	37	40	15	3	5
Opportunities to meet with Village officials & participate in discussion of issues	37	40	15	3	5

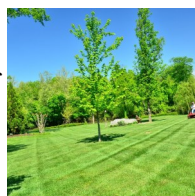
The entire survey with comments are available on the Village website at binghamfarms.org

Keep Your Lawn Healthy

Your lawn so far has survived a very dry spring. Now take steps to keep the lawn healthy by following these fertilizer tips.

- **Mulch** your grass clippings. Let short clips fall back on the lawn. Clippings are a source of nitrogen.
- **Cut high.** Leave 3 inches on the grass blade after cutting. Tall grass promotes root growth and shades out weeds.
- **Rake** compost into the lawn. Rake 1/2 inch of compost into an established lawn to build soil fertility.

- **Water the lawn** to minimize stress. A green lawn in Michigan needs .5 to 1.5 inches of water per week. Don't soak your lawn; watering should not produce puddles. Lawn dormancy is a natural response to drought. However, some water may be necessary during an extended drought of more than a month.



When To Pull A Permit?

It's great to see all the activity in the Village with people working on landscaping, or making changes to the exterior of their home. So, when are permits necessary and what work needs Village approval.

New homes and additions need Village approval before getting a permit. Any significant changes to the exterior of a home may also require Village approval.

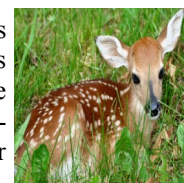
Before undertaking any exterior projects, give the Village office a call 248.644.0044. It could save you both time and money.



Don't Feed the Deer

Cute to look at, but not when they're feasting on your hostas and other flowers. The Village receives complaints constantly, but there's not much the Village can do. Because we are in a populated area, it is not safe to cull the growing herds.

Making matters worse, some neighbors are actually feeding the deer. That is not a recommended activity for several reasons.



- Deer need to keep their foraging skills. This is how they survive.
- Having food out for them just draws more deer into the area.

There are a few products on the market that might detract the deer from eating your plants, products like Liquid Fence or Deer Off among others. One of the drawbacks for these products is that one has to rotate with different spray products because deer and rabbits will get used to the scent.

Birmingham Cancels Fireworks

So long Fourth of July Fireworks. Citing the increase in costs and public safety concerns, the City of Birmingham has cancelled its popular Fourth of July Fireworks Celebration at Lincoln Hills Golf Course.

The City indicated that the crowds have grown exponentially over the last several years as fewer municipi-



palities offer a fireworks program. The number of people attending surpasses the ability of the local police departments to provide adequate security. Both Birmingham and Beverly Hills provided police officers, many on overtime. But the crowds were just too big.

The uptick in attendance at the fireworks was quite evident in recent years. Even seating outside the golf course became crowded.

It's sad to see such a fun activity no longer available to future generations. It's understandable though. Safety has to be the primary goal for events that bring in so many people.

Thank you Birmingham and Beverly Hills for all your events over the years.

**CHECK OUT THE NEW
POLICE DEPARTMENT
FACEBOOK PAGE**



Officers Recognized For Exemplary Work

Six police officers and a police staff member were recently recognized for diligent police work over the past year.

Officer Justin Wells was recognized for help in locating and talking down a suicidal female, eventually talking her into going to Beaumont Hospital for treatment. He stayed on the phone with her until she walked into the hospital.

Officer Jeff Gorski attempted to make a routine traffic stop when the subject sped off down Telegraph Rd. Due to heavy traffic, the suspect fled on foot. By providing a detailed description of the suspect, the Southfield Police Dept. was able to apprehend the suspect.

Officers Jim Hirschfeld and Thomas Goodroe responded to a resident in Bingham Farms at the request of the Southfield Police Department to check for an individual known to have recently committed a felony Home Invasion. Staying in the area where the suspect lived, the parents of the suspect were encouraged to get their son to turn himself in.

Officers Jeff Gorski, Lt. Brian Crane & D/Sgt. Mike Bastianelli were recognized for their quick action responding to a burglary in progress in Franklin. Conducting an extensive search of the neighborhood, the identification of several teenagers, who were present at a home near the burglary was obtained, and through investigative interviews, one of the teenagers admitted to the burglary. In total 8 teenagers eventually confessed to their involvement.

Police Clerk Susan Schultz was recognized for her efforts in compiling a training manual to help newly hired clerks and for providing hands-on training.

These commendations show the skill and expertise of all the officers in the Franklin Bingham Farms Police Department.

Kindly Pick Up After Your Dog

This is somewhat embarrassing to write. One of the major complaints in the Village involve dog owners who do not pick up after their dog.

Some dog owners leave their dog poop wherever...on someone's lawn, even on the road.. How about right in front of a mailbox.

There are others who do carry doggie bags and place the droppings in the bag. They even tie it off. But then, they will leave it on someone else's property.

Better yet, if it's garbage pick up day, they just deposit it in a readily available empty trash can, so that the property owner can either dispose of it or leave it in the trash can until the following week.

Be a good neighbor and take your dog's droppings with you.



Rules for Cutting Down Trees

In an effort to protect the significant forestation in the Village, a Trees & Woodlands Protection Ordinance was enacted more than 10 years ago.

No more than three regulated trees may be removed from a site within a two year period without first obtaining a tree removal permit from the Village office.

No tree removal permit may be issued for an activity that results in the removal of more than 20% of the



Cont'd on Pg. 9

Beverly Park Sets UP Story Book Trail

Beverly Park adds a unique feature to its nature trail. Now your kids can enjoy both reading picture books and walking at the same time.

The Story Book Trail is made up of eighteen signs spread along the main walking trail. Each sign features two pages of a storybook. To read the entire book, families walk the .4 mile between the first and last post.

The book begins close to the first tee of the disc golf course.



The program is a joint effort of the Beverly Hills Parks and Recreation Board and Youth Services at the Baldwin Library.

A variety of books have been selected to highlight seasons and holidays throughout the year that are geared toward preschool and elementary aged children. Throughout the season, new books will periodically be added..

So just keep coming back to see what's new.

Youth Group Set to Solicit in Village

Please take note that a group of young people from the Michigan Conference of Seventh Day Adventists will be doing "door-to-door missionary work" in the months of July and August.

They will be asking to place Christian literature in each home that will accept it and enable residents to give a donation to help further their missionary training.

Religious organizations are protected by the First Amendment. However, they are subject to reasonable restrictions and must solicit during the day. They must obey any "No Solicitation" signs visible from the main door of a private residence.

As required by Village ordinance, the Michigan Conference of Seventh Day Adventists have fulfilled all the requirements necessary to "solicit" in the Village.

Bingham Farms Elementary Students Win Huge Math Award

Students at Bingham Farms Elementary School competed with over 6,800 peers from 250 schools to emerge as National 2017 First Place Gold Math Pentathlon champions. The team shares the honor with a school in Texas, both showcasing their skills in problem solving, computational, spatial-geometric and scientific-logical reasoning.

"It really does take a village to nurture this many pentathletes to success," said Stacey Broomfield, Bingham Farms Elementary School Math Pentathlon coordinator and teacher. "This win is a result of the Bingham Farms family village working together to help students have fun while learning math. From the bottom of my heart, I would like to thank the entire community."

The team had 95 participating students this year with 61 entering the competition. They were supported by the Bingham Farms Elementary School PTA, teachers and staff, fellow Birmingham Public Schools student volunteers, parents and Bingham Farms Elementary Principal Russ Facione.

"This was a fabulous finish for our hard working, dedicated math pentathletes," said Facione. "Our students are proud and excited to be national champions. We are so proud of their commitment and performance at the national level."



Woody Debris Management on the River

Municipalities for decades have been working on cleaning up the Rouge River and its tributaries. This was done with municipal funding and millions of dollars of grants.

That program has been very successful.

Unfortunately there are not similar programs for that portion of the waterway that flows through private property. There are no grants at this point available to assist homeowners in removing debris from that portion of the river that runs through their property.



It means the cost of clean up is borne by that particular property owner.

The best recommendation that can be offered is for the property owner to contact a local tree removal company to see if they handle this type of work.

Plus there are other requirements imposed by the MDEQ (Michigan Dept. of Environmental Quality).

Local governments have no authority to regulate these waterways which are known as waterways of the state. The sole entity that does have this authority is the MDEQ.

There are a few ways property owners can prevent pollutants to enter the water way.

- ♦ Do not fertilize plants or lawn near water source
- ♦ Preserve a "Buffer strip" of at least 10-feet of dense, preferably natural vegetation to grow along the water's edge and stream bank. This allows pollutant to filter out and the bank to stabilize.
- ♦ Never mow to the edge of a stream bank or pond. Leave a buffer of at least several feet for root development.
- ♦ Never mow grass shorter than 2.5 inches. The height allows for larger and deeper root system, a strong defense against weeds and drought.

SIGN UP FOR VILLAGE EMAIL BLASTS

Go to

www.binghamfarms.org

Click on

Stay Informed icon

Bits n Pieces

Garbage Pick Up

- Regular garbage pick up is scheduled for Thursdays.
- Have garbage out by 7:00 a.m. on Thursdays or after 7:00 p.m. Wednesday evening.
- Questions - call Car Trucking at 586.791.8480



Grass mowing

- It's best in the summer to keep your grass at 3" as this prevents it from drying out.
- Do not let grass/weeds get to 8" or more as this will cause the Village to issue a violation.

Construction Work

- Construction should not begin before 7:00 a.m. and should stop by dusk. Construction equipment should not start before 7:00 a.m.



Contractor Signs

- Do not allow any contractor doing work on your property to put up their signs. This is considered advertising and is prohibited by Village ordinance.

Tree Removal

- If you are taking down more than three trees, call the Village office to check whether a permit is needed. The village has a Tree and Woodlands Protection Ordinance.



Summer Storms

- If the power goes out, call DTE **800.477.4747**. Call, even if your neighbor has already called it in. It helps DTE estimate how many customers are out of power.

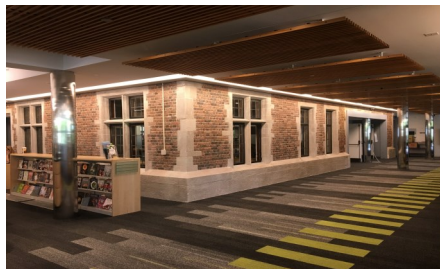


Baldwin Library Adult Wing Opens

If you have not yet visited the newly renovated Adult Services area at the Baldwin Library, stop by to walk around the beautiful light-filled space. The renovation was unveiled to the public with a grand opening ribbon cutting ceremony on June 11.

The new space features:

- Light throughout coming from newly installed windows and energy-efficient LED lights
- New furniture, carpeting, and paint
- Quiet group study rooms
- Ample seating equipped with outlets and USB charging ports
- Updated public computers
- A new reading room, the Claudia E. Ireland Room, located just off the Grand Hall
- Nods to the original 1927 building with exposed brick, tile, and windows



Baldwin Library Summer Programs

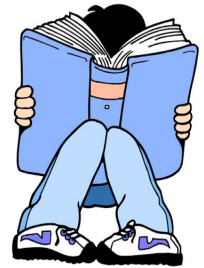
Readers of all ages are welcome to join in the fun with BPL's Summer Reading Program. Sign up online at www.baldwinlib.org/summer-reading

Read books to win prizes, then join us for our Finale events in August.

Children will enjoy the finale party with Baffling Bill the Magician on Monday, August 14 at 10:30 a.m.

Teens will wrap up the program with an End of Summer Reading Party with DIY ice cream sandwiches on Thursday, August 11 at 7:00 p.m. For adults, Chef Jake Williams will host a Salsa Cook Off on Tuesday, August 8 at 7:00 p.m.

This summer, the Library is running a special program series, The 1967 Detroit Riot: 50 Years Later. On Monday, July 10 at 7:00 p.m., U of D Mercy Architecture Professor will talk about the history and mystery of buildings in Detroit. The Detroit Historical Museum will be collecting oral history reports from the 1967 riot on Friday, August 4 from 9:30 a.m. to 4:30 p.m. On Sunday, August 13 at 2:00 p.m. watch the documentary, American Revolutionary: the Evolution of Grace Lee Boggs.



**UPCOMING VILLAGE
COUNCIL MEETINGS**
7:30 p.m.

**July 24
August 28
September 25**

Village Balances Its Budget Once Again

The Village Council recently approved a balanced Fiscal Year 2017/2018 Budget in the amount of \$1,903,499 and was able to maintain the 8.4 mill rate.

This was accomplished with just receiving a minor increase in property tax revenue, and some savings in public safety.

The total taxable value of properties in the Village this fiscal year is \$167,066,000, an increase of just 2.9% over last year, attributed to three new homes added to the tax roll in 2016. This is less than the taxable value of properties in 2001.

Given the constraints of both the Headlee Amendment and Proposal A, both controlling the annual increases in property taxes, the Village probably will never recover from the real estate recession of 2008.

This is the result of these two amendments combined with the bottom dropping out of the real estate market in 2009.

Local municipalities are searching for other means to keep current levels of service. For Bingham Farms, that is through its millage rate.

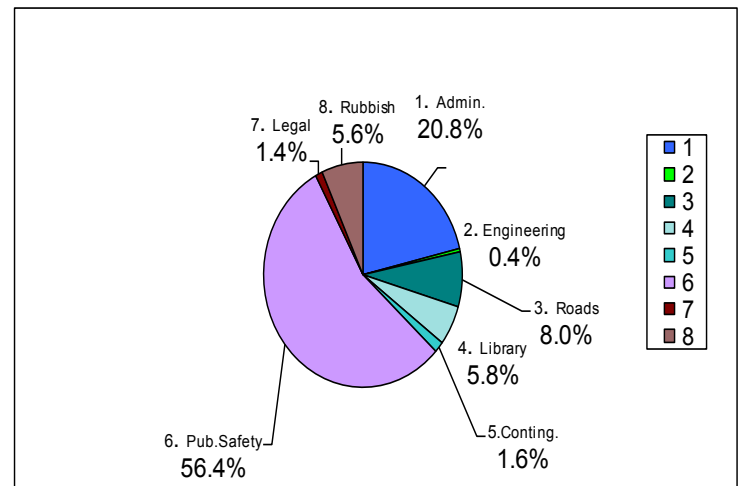
People believe that when a property is sold, it is uncapped and the

municipality benefits. But that's not correct as that gain is spread across all the taxpayers. The taxpayers benefit; the Village does not.

The only time the Village sees a bump is when a new home is built and only then does that assessed value become an addition to the tax base.

Adding up the impact and restrictions with Headlee and Proposal A, the loss of statutory state revenue sharing and the significant reduction in property values; hence the reason the Village must rely on its millage rates to provide necessary, quality services to its residents.

1 Administrative	\$404,574
2 Engineering	9,000
3 Appropriations-Road Imprvmts.	150,000
4 Library	109,025
5 Contingency	30,000
6 Public Safety	1,050,644
7 Legal	22,000
8 Rubbish	128,256
	<u>\$1,903,499</u>



Budget Highlights

The Village Budget for FY 2017-2018 is \$1,903,499, a 3.6% increase compared to last year's budget.

There were two major categories with significant increases; Baldwin Library is up 3% and rubbish is up 25% due to the Village's up front payment of the new recycling carts.

Police and Fire are up 1 and 2% respectively per contracts.

As the graph depicts, 56% of the budget goes to public safety, which includes the purchase of services from the Franklin Police Dept. and the Frank-

lin/Bingham Fire Dept.

The Village also purchases library services from the Birmingham Baldwin Library. The cost this year is \$109,025.

Administrative expenses are \$404,574, up \$22,827. This category includes costs for office rent, rubbish collection, planning, salaries, benefits etc.

In the recent past, the Village has concentrated on road maintenance projects. However, some of the roads now will need major reconstruction

and the Village is beginning to establish funding for these projects to avoid financing them.

**BINGHAM FARMS
VILLAGE TAX
Due without penalty by
August 31, 2017**

**SOUTHFIELD TWP. SUMMER
TAX
Due without penalty by
September 14, 2017**

Keep Fighting the West Nile Virus This Summer

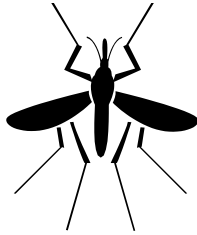
It seems that the battle against West Nile Virus continues. Now concerns have been raised over the Zika Virus.

First, West Nile Virus continues to be a significant factor, especially in southeastern Michigan.

Last year, Michigan documented 18 cases of human infections and 2 deaths. All but 4 were of these cases were in southeast Michigan; 3 in Oakland County

For most people the virus is just a slight nuisance. Many don't even realize they've been infected. It's another story for older adults and very young children. The virus could cause major problems.

The Oakland County Health Department believes that the low numbers of human infections is directly related to the prevention methods people are taking. The best advice — keep doing



what you are doing.

- ♦ Reduce areas where mosquitoes breed,
- ♦ Repel to protect against mosquitoes, and
- ♦ Report potential mosquito breeding areas.

Other measures that can reduce the risk of contracting the virus include:

- ♦ Repair all holes in windows and screens to keep mosquitoes out of your home.
- ♦ Empty water from mosquito breeding sites such as buckets, barrels, cans, old tires etc.
- ♦ Avoid being outdoors when mosquitoes are most active (dawn and dusk).
- ♦ Wear light colored, long-sleeved shirts and long pants when outdoors.
- ♦ Apply insect repellants that contain the active ingredient DEET to exposed skin or clothing. Always

follow the manufacturer's directions for use. (Avoid applying repellent containing DEET on children less than two years of age.)

The state and the county still monitor the situation by recording the number of dead birds. This often is an indicator that the bird was infected.

If you find a dead bird, report your finding to the Oakland County Health Division Hotline at 1-877-377-3641. Then, properly dispose of the bird and wear gloves to protect yourself from direct contact.

At this point, no Zika virus infections have been reported in Michigan.

For updates on West Nile Virus, log on to the state or county website at:

www.michigan.gov/westnilevirus

or

www.oakgov.com.

How to Safely Dispose of Household Hazardous Waste

It's convenient, easy and available all year long. Best yet, **NO APPOINTMENT NEEDED.** Bingham Farms' residents can drop off their household hazardous waste products at the SOCRRA facility on Coolidge Highway in Royal Oak.

The contract between the Village and SOCRRA also allows residents to drop off electronic equipment, such as televisions (no consoles) and computer equipment.

Put the items in your car, drive to the facility, drive up to the little building in the back. Just show proof of residency (driver's license will do). The SOCRRA staff will do the rest. They will remove all the items from your vehicle.



cle.

The whole experience should take less than an hour and that's door to door.

Should you have any questions regarding acceptable materials, call SOCRRA at **248.288.5153** or visit their website at www.socrra.org.

Remember the contract covers just household hazardous waste and electronics. It does **not** cover business hazardous waste. Federal and state environmental laws prohibit the facility from accepting this type of waste.

Businesses may call the Environmental Recycling Group at 734.437.9650 to receive information for proper disposal. They are located at 13040 Merriman, Ste. 299, in Livonia.

Cutting Down Trees Cont'd from Pg. 5

regulated trees on a site, unless a tree replacement plan is submitted and approved.

This does not apply to dead, dying or diseased trees.

However, it is strongly recommended that anyone taking down any trees call the Village to inform us of the project, the # of trees involved etc. This will prevent unnecessary follow up by the Village.

Additionally, dead trees on private property can become an issue especially if they are located in an area where they are a danger to the public or adjoining property. These should be removed. Otherwise, the Village may notify the property owner to remove said trees.

If they are not removed, the property owner is subject to a civil infractions ticket.

A simple call to the Village office makes the process much easier for everyone.

Bingham Farms

Meet your new mixed recycling cart

Now, recycling is just as easy as taking out the trash!

Your new cart holds over three times as many recyclables as your current bin. The cart has wheels and an attached lid, making it easier to recycle more – which means less trash to the landfill.



QUESTIONS? SOCRRA.ORG • 248.288.5150



This project was funded in part through a grant from the Michigan Department of Environmental Quality and The Recycling Partnership



Put these recyclables in the cart

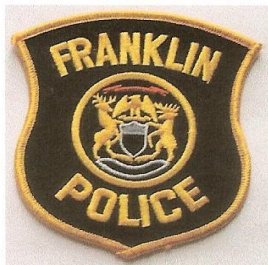
Recycling is just as easy as taking out the trash!



Paper	Cartons	Metal	Glass	Plastic
Newspaper Junk Mail Cardboard Magazines	Milk Cartons Juice Boxes	Empty Cans Aerosol Cans	Bottles Jars All Colors	Bottles Jugs Containers

Take these recyclables to the SOCRRA drop-off center

Styrofoam	Scrap Metal	Paint & Chemicals	Plastic Bags	Electronics	

**FRANKLIN – BINGHAM FARMS POLICE DEPARTMENT**

32311 Franklin Road

Franklin, Michigan 48025

PHONE NUMBER: (248) 626-9672 (non-emergency)

Emergency 911

Dispatch (248) 626-5444

HOUSE CHECK FORM

Fax Number: (248) 538-5450

DATE TAKEN: _____

NAME	ADDRESS	
PHONE () -	LEAVING	RETURNING
CAN BE REACHED AT:		PHONE () -

ALARM: YES ____ NO ____	TYPE: SILENT ____ AUDIBLE ____ OTHER ____
ALARM COMPANY: _____ PHONE () -	

MAIL / NEWSPAPER STOPPED: YES ____ NO ____ LAWN / SNOW CARED FOR: YES ____ NO ____

CAR IN DRIVEWAY: YES ____ NO ____ If yes, what kind? _____

TIMED LIGHTS: YES ____ NO ____ AREA: _____

WILL ANYONE HAVE ACCESS? YES ____ NO ____ If yes, WHO, WHEN? _____

NEIGHBORS WATCHING HOME:	NAME
	ADDRESS
	PHONE () -
OTHER INFORMATION:	

Each resident shall be advised of the following: The best deterrents for burglaries are trustworthy neighbors who will report any suspicious activity to the police and a good burglar alarm system. If, for any reason, the resident returns early or extends his / her stay, the resident is to let the Franklin – Bingham Farms Police Department know immediately.

TIME / DATE CHECKED	OFFICER (S)	REMARKS
1.		
2.		
3.		
4.		
5.		
6.		

ALARM REGISTRATION FORM

Franklin Police Department
32311 Franklin Road
Franklin, MI 48025
Phone (248) 626-9672 Fax (248) 538-5450

Alarm System User

Business Name (if applicable): _____

First Name: _____ Last Name: _____

Address: _____ City: _____ State: _____ Zip Code: _____

Suite: _____ Other Alarm Site Information: _____

Phone: _____ Alt.: _____ Email: _____

Alarm Panel Location: _____

Alarm Type: Panic _____ Break-In _____ Fire _____ Audible _____ Silent _____

Billing Information (If different from above)

Business Name (if applicable): _____

First Name: _____ Last Name: _____ Title (check): ☐ Mr. ☐ Mrs. ☐ Ms.

Alarm Company

Business Name: _____

Address: _____ City: _____ State: _____ Zip Code: _____

Phone: _____ Fax: _____ Contact Person: _____

Job Title: _____ Email: _____

Monitoring Company (If different from above)

Business Name: _____

Address: _____ City: _____ State: _____ Zip Code: _____

Phone: _____ Fax: _____ Contact Person: _____

Job Title: _____ Email: _____

Emergency Contact Information

	Name	Relation	Phone	Alternate Phone
1.	_____	_____	_____	_____
2.	_____	_____	_____	_____
3.	_____	_____	_____	_____

Cable TV Problems?

Having problems with your Comcast or AT&T TV service or have a question about your bill?

COMCAST 1-800-266-2278

Local Office 248-549-2100

Local office located at 1981 W. Maple (Walmart Shopping Center), Troy, MI

AT&T 1-800-288-2020

Birmingham Area Cable Board Complaint Line:

248.336.9445

GOING ON VACATION?

Fill out a House Check Form. A sample is found in this newsletter. The form also is available online at

binghamfarms.org.

Click on the Forms link.

When filled out, drop it off at the Franklin Bingham Farms Police Station, located at 32325 Franklin Rd. in downtown Franklin.

This is important information for our police to know as they do routine patrols of the Village.

TAXES ARE DUE

BINGHAM FARMS VILLAGE TAX

**Due without penalty by
August 31, 2017**

SOUTHFIELD TWP. SUMMER TAX

**Due without penalty by
September 14, 2017**

Upcoming Events

Birmingham

In The Park Concerts - 7 p.m. Shain Park Every Wednesday—
June - August

Farmer's Market - Municipal Parking Lot #6 Old Woodward,
(south of Maple) every Sunday 9 a.m. - 2:00 p.m. thru October

Family Movie Night - Booth Park 7:30 p.m. Jul 14 & Aug. 11

Day on the Town - downtown July 22 9:00 a.m.— 7:00 p.m.

Street Art Fair - Sept. 17 & 18

Franklin

Farmers Market on the Green Sundays 11:00 a.m. - 3:00 p.m.

Music on the Green - downtown Franklin— evenings
July 12 & July 26 at 7:00 p.m. weather permitting

Movies on the Green - downtown Franklin - 8:30 p.m.
July 26, Aug. 2 & Aug. 9

Labor Day Parade - downtown Franklin - Sept. 4

Cider Mill - Open from Sept. 4 - Nov. 26

General

Woodward Dream Cruise - August 20
www.woodwarddreamcruise.com

SIGN UP TODAY FOR EMAIL BLASTS

**LOG ON TO
www.binghamfarms.org**

**Click on the Stay Informed icon
at the bottom of the Homepage**

The Bingham Farms Post is published quarterly by the Village of Bingham Farms.

Editor: Kathryn Hagaman

clerk@binghamfarms.org

248.644.0044

Office Hours: M-F 9:00 a.m. - 4:00 p.m.

The next edition of the Post is scheduled for October, 2017. Deadline for submission of articles is September 15, 2017.

All articles must be submitted in writing to the Village office. The editing of articles is left to the sole discretion of the staff.

Website: www.binghamfarms.org