

# Boone County Historical Society



July–August 2013

## 2013 PROGRAMS & EXHIBITS

### 7 pm Thurs., July 18 Our Annual “Out-and-About” at the Gathering House in Florence Nature Park.

*Our guest speaker will be recently-retired Florence Police Chief Tom Szurlinski. The Chief has seen a lot of changes in the City of Florence over just the last couple of decades! Enjoy the refreshments and the ambiance of the Gathering House and the surrounding meadows and woods.*

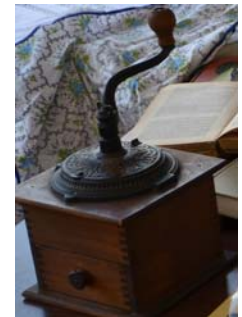
7pm Thurs., Sept. 19,  
at the Main Library:  
**Judy Clabes**, former owner of *The Boone County Recorder*, speaks about her experiences in the newspaper business, as well as her current endeavors as President and Founder of the KY Philanthropy Initiative and President/CEO of Judith Clabes Associates, a consulting firm.

## BOONE COUNTY HERITAGE DAY 10AM–3PM SATURDAY, JULY 13 HISTORICAL SOCIETY MUSEUM

Antique and vintage cars, old-time farm equipment, household items like your Great Grandmother used will be displayed in and around the Museum on Boone County Heritage Day, Saturday, July 13.



This event, coupled with the Historic Burlington Business Association’s Chalk Fest, is sure to appeal to the whole family. (photos from 2012)



There will also be music, food by Tousey House, art displays by Boone County Visual Arts Association, live alpacas and spinning demonstrations, and lots more.



***Very Important:*** *If you would be willing to loan items for the exhibit, please call Virginia Lainhart 689-7240, Pat Yannarella 835-2435, or Betsy Conrad 371-5882. We need to know ahead of time what you would be willing to loan so we can plan the display spaces and arrange to receive the items in time. Thank you.*

### Additional 2013 Programs and Exhibits . . .

**Sat., Nov. 9:** Museum Exhibit honoring *Boone County’s Veterans*.

**Thurs., Nov. 21:** *Bank on Boone County*. Retired Boone County bankers reminisce about their experiences.

**Sat., Dec. 7:** *Boone County Christmas*. Museum exhibit of antique toys, dolls, trains, in conjunction with Historic Burlington’s Christmas events.



Master of Ceremonies Bruce Ferguson notes that the Old Union Road, just a few yards away from the new Historic Marker, is the actual trail that CSA General John Hunt Morgan traveled on horseback.



NKU Regents Professor of History James A. Ramage delivers the dedication address. One guest commented, "Dr. Ramage certainly makes history come alive!"

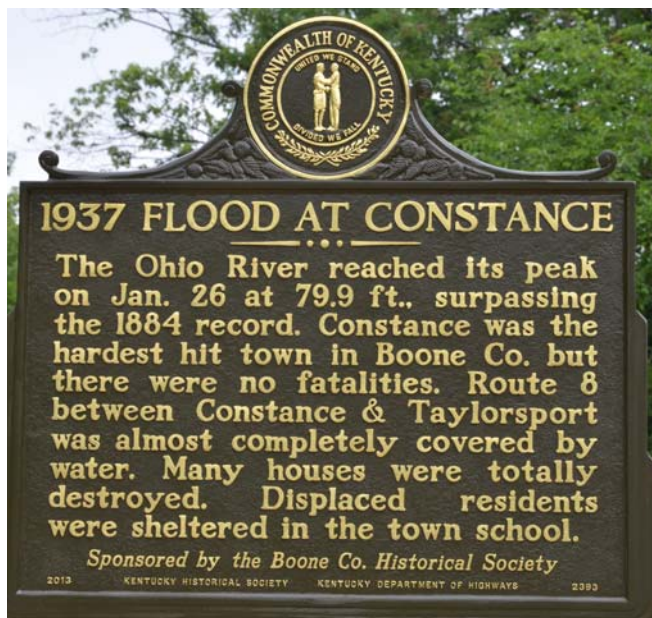
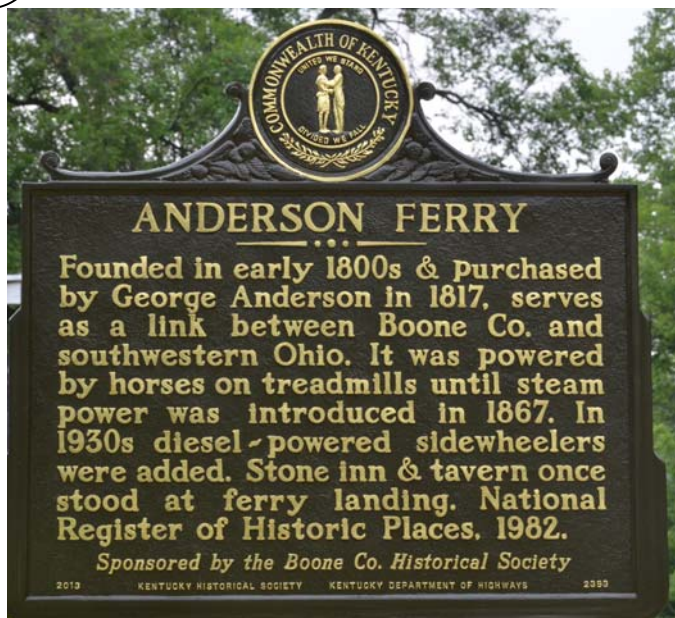


Unveiling the marker: Union Mayor Don Kirby, BCHS Vice President Virginia Lainhart, Boardmembers Katie Presnell, Pat Yannarella, and Betty Poole.



More than fifty folks attended the dedication ceremony on Sunday, June 9, 2013.





Boone County's own singer-songwriter and artist Keith Howard presented his newest song, "The Anderson Ferry," as part of his musical program.



Keith Howard presented this painting of the Anderson Ferry to the Boone County Historical Society as a gift for the Museum.



Over 100 folks gathered for the dedication ceremony on Sunday, June 23, 2013. The tent furnished by Paul Anderson provided some relief from the



Paul Anderson presented BCHS the old bell from Boone No. 5 for the Museum.



Unveiling the marker: Yvonne Edwards, Ferry owner Paul Anderson, Keith Howard, and Master of Ceremonies Michael Rouse.

# BOONE COUNTY HISTORICAL SOCIETY



P.O. BOX 23  
FLORENCE, KY 41022-0023



**Website:** boonecountykyhistory.org

Newsletter Editor: Betsy R. Conrad  
brconrad@fuse.net



## ABOUT THE BOONE COUNTY HISTORICAL SOCIETY

The **mission** of the Boone County Historical Society is to develop awareness and promote appreciation of the history of Boone County, Kentucky.

The Boone County Historical Society provides program meetings at 7pm on the third Thursday evenings of January, March, May, July, September and November.

Meetings (except for July) are held at the Boone County Public Library, Main Library, 1786 Burlington Pike, Burlington, Kentucky. July “out-and-about” meetings are held at various locations around the County.

The Society hosts a number of exhibits at the BCHS Museum (*see page 3*) each year. Most items for these exhibits are borrowed on a temporary basis from our members and friends, and do not belong to the Society. We greatly appreciate being entrusted with these loaned items that relate to our exhibits.

Items in our permanent collection have been donated by individuals and families who desire to share with others items of historical significance to Boone County. Their generosity is gratefully appreciated.

Annual membership fee is \$15 per household, due every January. This covers the cost of printing and mailing our newsletters. Checks, payable to the Boone County Historical Society, can be mailed to the Boone County Historical Society, P.O. Box 23, Florence, KY 41022-0023.

The Boone County Historical Society has received a 501(c)(3) tax-exempt status — all gifts to the Society are tax deductible.

All programs and exhibits are free and open to the public.

Boone County Historical Society expresses appreciation to the Boone

County Judge/Executive and Fiscal Court Commissioners for permission to use the Old County Clerk’s Office as a repository for items of historical significance to Boone County’s heritage.

Directions: I-71/75 Exit 181 (KY 18 Burlington Pk). Proceed westbound 4.6 miles, turn right at the first traffic signal (Bullittsville-Burlington Road aka Garrard St.); turn left into the Boone County Administration Building parking lot. The Museum is the small white brick building marked “County Court Clerk’s Office...1853.” The street address is 2965 Gallatin Street, Burlington, KY 41005.

Officers and Boardmembers:

President: Betsy R. Conrad  
Vice President: Virginia Lainhart  
Secretary: Pat Yannarella  
Treasurer: Steve Conrad  
Board Members: Katie Presnell  
Betty Poole  
Wilma McMillian