

Boone County Historical Society



May, 2018

UPCOMING EVENTS

Sat., 10-2, July 7, 2018:

Boone Co. Heritage Day —

vintage autos, motorcycles, antique farm tools, old-time cooking utensils, music, food, Boone County Visual Artists and Chalkfest, in parking lot surrounding the Boone County Admin. Bldg. & BCHS Museum.

July 19, 2018: BCHS “Out and About” at the Museum in Big Bone Lick State Historic Site. Tour the air-conditioned museum and check out the new exhibits!

Sept. 20, 2018: BCHS meeting with speaker TBA.

Nov. 15, 2018: BCHS meeting with speaker **Ron Buckley** and his extensive archaeological research on **Absolom Graves**.

Fri., Dec. 7: Christmas Tree Lighting event — including Santa Claus, display of old time Christmas toys and trains in the Ferguson Community Center.

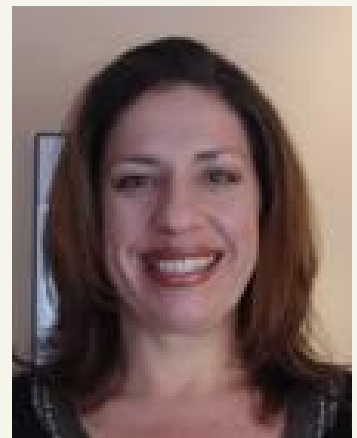
Historian Hillary Delaney presents: **Civil War’s U.S. African-American Troops from Boone County, KY . . .**

**7 pm Thursday, May
17, 2018**

**Boone County Public
Library, Burlington**

Hillary Delaney, a Boone County native, returned to her childhood home after living in Richmond, Virginia, where she had settled after attending college. Her love for history, writing and research was a natural fit for her position in the Local History Department at BCPL.

Since joining the department in 2013, a large part of her research work has been dedicated to documenting Underground Railroad history in Boone County, and identifying enslaved African Americans for a genealogy database.



In addition to genealogy assistance, programs and display development, Hillary regularly publishes articles on Boone County history, both in the BCPL monthly newsletter, and in a variety of other print and online publications.

The meeting is free and open to the public. Please invite your friends and family members to attend this fascinating presentation.

Something more Hillary Delaney's been working on:

"On September 29th, 2018, a memorial site and marker for a Revolutionary War patriot named Daniel Goff will be dedicated. Goff, who lived first in Campbell County, then in Boone County where he is believed to have lived out his days, was buried in the Marshall family cemetery on Gunpowder Road.

"What makes this dedication unique is that Goff is unusual among our patriots. He was one of five brothers who served in the Virginia Line, all born to free African American parents in Cumberland County, Virginia. Goff came to our area with David Leitch (of Leitch's Station) and went on to work for James Taylor in Newport for many years. Taylor encouraged Goff to apply for a pension, and gave an affidavit on his behalf.

"The timing of this project is great, as the National Liberty Memorial (honoring African Americans in the Revolutionary War) is set to be in place in 2019!"

Hillary's research has now become part of an application for a DAR marker as well as a VA marker, and she's begun an application for a KHS marker — all of these to be placed somewhere near the intersection of Gunpowder and Mt. Zion Road!

She'll provide more updates at the May 17th meeting!

UPCOMING COMMUNITY EVENTS

Friends of Big Bone: June 28 – Business meeting at 6pm at Scheben Library, program at 7pm. **Jeannine Kreinbrink** will present a program on the Native Americans of the Big Bone Lick Valley. ***The audience is encouraged to bring their Native American artifacts for identification by archaeologists.***

City of Florence Memorial Day Parade & Program: Bring the kids with their flags to see military units, Boone County Sheriff and Florence PD units, horses and riders, floats by local organizations, a massive band made up of musicians from all four of the County's High Schools, and much more, proceeding from Boone County High to Florence Government Center, Monday, May 28, 10 am to Noon, followed by Patriotic Program at the Veterans Memorial off Ewing Blvd.

WHEN CAN WE RE-OCCUPY OUR MUSEUM? Assistant County Administrator **Matthew Webster** has advised that the only remaining issue to the Boone County Historical Society's move-in to the little museum is the door and lock. It seems as though the door may be beyond restoration due to wood rot, and they want to install a new and more secure lock. At least all the file cabinets and their contents have been removed. We look forward to celebrating Heritage Day there.

Just a little hint regarding 2019's Northern Kentucky History Day—plans are to hold the event at Kenton County Library's newest facility in Erlanger!

WOVEN COTTON THROWS AVAILABLE



BCHS has already sold nearly all of the woven cotton throws ordered in December. The throws feature images of Boone County's notable sites. The price is \$45 each; all proceeds are dedicated to the acquisition of more historic markers for Boone County. Our partnership agreement with BCPL precludes us from selling them at the Library, or you may contact any BCHS Officer or Board Member to order one — or more!

HISTORIC MARKERS ERECTED BY BOONE CO. HISTORICAL SOCIETY

BCHS's signature project has been to erect Historical Highway Markers in Boone County. To date, we have posted nine markers. The tenth one, **John Uri Lloyd/Stringtown on the Pike**, will be erected this spring in Crossroads Point Plaza (corner of Main Street/Dixie/Turfway — site now under construction). The cost of that marker is being shared by the City of Florence.

- 2012: Bullittsburg Baptist Church
- 2012: Hopeful Lutheran Church
- 2013: Anderson Ferry
- 2013: John Hunt Morgan
- 2014: Dinsmore Homestead
- 2014: Craig's Camp/Burlington
- 2015: Lewis Loder/Petersburg Distillery
- 2015: Dr. George Speri Sperti
- 2017: CCC Camp in Walton

The historic marker commemorating the Civil War's "**Skirmish at Florence**" that had been standing at the southwest corner of U.S. 25/127 since 1962, was destroyed January 1st as the result of a traffic collision. Florence Police advised us that morning that they had moved the damaged parts to the grass nearby. We contacted KY Highway Dept. to rescue the pieces for repairs, after which they advised it was too damaged for the foundry to repair. Ky. Historical Society, legal owner of the markers, is in the process of seeking damages from the at-fault driver.

THE BCHS MUSEUM, TEMPORARILY CLOSED DURING RESTORATION

Boone County Historical Society expresses appreciation to the Boone County Judge/Executive and Fiscal Court Commissioners for permission to use the Old County Clerk's Office as a repository for items of historical significance to Boone County's heritage.

Directions: I-71/75 Exit 181 (KY 18 Burlington Pk). Pro-

ceed westbound 4.6 miles, turn right at the first traffic signal (Bullittsville-Burlington Road aka Garrard St.); turn left into the Boone County Administration Building parking lot. The Museum is the small white brick building marked "County Court Clerk's Office...1853" The street address is 2965 Gallatin Street, Burlington, KY 41005.



Artwork by Pattie Purnell

BOONE COUNTY HISTORICAL SOCIETY



P.O. BOX 23
FLORENCE, KY 41022-0023

Website: boonecountykyhistory.org

Newsletter Editor: Betsy R. Conrad
brconrad@fuse.net

ABOUT THE BOONE COUNTY HISTORICAL SOCIETY

The **mission** of the Boone County Historical Society is to develop awareness and promote appreciation of the history of Boone County, Kentucky. We are fortunate to partner with the Boone County Public Library.

The Boone County Historical Society provides program meetings at 7pm on the third Thursday evenings of January, March, May, July, September and November.

Meetings (except for July) are held at the Boone County Public Library, Main Library, 1786 Burlington Pike, Burlington, Kentucky. July "out-and-about" meetings are held at various locations around the County.

The Society hosts a number of exhibits at the BCHS Museum (*see page 3*) each year. Most items for these exhibits are borrowed on a temporary basis from our members and friends, and do not belong to the Society. We greatly appreciate being entrusted with these loaned items that relate to our exhibits.

Items in our permanent collection have been donated by individuals and families who desire to share with others items of historical significance to Boone County. Their generosity is gratefully appreciated.

Annual membership fee is \$15 per household, due every January. This covers the cost of printing and mailing our newsletters. Checks, payable to the Boone County Historical Society, can be mailed to the Boone County Historical Society, P.O. Box 23, Florence, KY 41022-0023.

The Boone County Historical Society has received a 501(c)(3) tax-exempt status — all gifts to the Society are tax deductible.

All programs and exhibits are free and open to the public.

Boone County Historical Society expresses appreciation to the Boone County Judge/Executive and Fiscal Court Commissioners for permission to use the Old County Clerk's Office as a re-

pository for items of historical significance to Boone County's heritage.

Directions: I-71/75 Exit 181 (KY 18 Burlington Pk). Proceed westbound 4.6 miles, turn right at the first traffic signal (Bullittsville-Burlington Road aka Garrard St.); turn left into the Boone County Administration Building parking lot. The Museum is the small white brick building marked "County Court Clerk's Office...1853." The street address is 2965 Gallatin Street, Burlington, KY 41005.

Officers and Boardmembers:

President: Betsy R. Conrad
Vice President: Thomas Schiffer
Secretary: Pat Yannarella
Treasurer: Steve Conrad
Board Members: Betty Poole
Ron Buckley
Brent Johansen
Carol Schiffer
Kathy Meyers