



# Boone County Historical Society

May—June, 2019

## **2019 MEETINGS & EVENTS**

*Note CHANGE of date/time:*

Stringtown on the Pike/  
John Uri Lloyd Historic  
Marker Dedication Cere-  
mony, 4:30 pm Tuesday,  
May 7, 2019 at 211 Main  
Street in Florence.

Sat., July 6, 2019: **Boone  
Co. Heritage Day / Chalk  
Fest.** Vintage autos, boat, an-  
tique farm tools, old-time  
cooking utensils, music,  
food, in Admin. Bldg. parking  
lot and in the BCHS Museum.

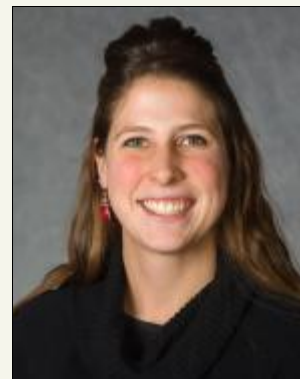
July 18, 2019: Annual “Out  
and About” at Rabbit Hash  
with Terrie Markesbery and  
Bobbi Layne Keyser.

Sept. 19, 2019: Paul Ander-  
son, Anderson Ferry —  
how Ohio river has changed  
and is expected to change.

Nov. 21, 2019: First Farm  
Inn’s owner Jen Warner.

Fri., Dec. 6: Boone County’s  
annual **Christmas Tree  
Lighting event!** Ferguson  
Community Center.

**Michelle Simon to speak  
about farming in Boone  
County...how it has  
changed and will  
change... 7pm Thursday,  
May 16, BCPL Burlington**



Michelle Simon is the Extension Agent for Agriculture and Natural Resources in Boone County. We are eager to hear her explain how farming in Boone County has changed in recent years, and how it might change even more with global warming.

**The City of Florence and  
The Boone County Historical Society  
cordially invite you to attend the  
Dedication Ceremony for the  
Kentucky Historic Marker  
commemorating  
John Uri Lloyd and Stringtown on the Pike  
4:30 p.m. Tuesday, May 7, 2019  
Crossroads Point Plaza  
211 Main Street (across from Post Office)  
Rain location Florence Government Center**

## 2019 KENTUCKY BORDERLANDS CONFERENCE HOSTED BY BCPL

**BUS TOUR** 10am-2pm Thurs., June 20, Rabbit Hash to Rising Sun, cost \$40, Main Library, Burlington. The 4-hour tour highlights Underground Railroad stories of neighboring river towns, Rabbit Hash, KY and Rising Sun, IN. Includes stops in Historic Rabbit Hash and Rising Sun, and a ferry boat ride along an Underground Railroad river crossing. Boxed lunch included in \$40 served at the Ohio County Historical Museum in Rising Sun.

**Evening Reception** 6:30pm—8:30pm Thursday, June 20, Boone County Historic Courthouse, Burlington. Free to Conference Registrants. Trina Robinson will discuss her exploration into her family's enslaved ancestry in Kentucky, their migration to Chicago, and how she's processed what she has learned through film, video and events throughout the country. Ms. Robinson will screen her 3-minute short film *The Call* and will share the story behind the film. Light refreshments served.

**KENTUCKY BORDERLANDS WORKSHOP** 9am-4pm Friday, June 21, Main Library, Burlington. Cost \$25, + \$10 boxed lunch option...A day of presentations reflecting on Kentucky's Underground Railroad and enslavement history. The purpose of the day is to open lines of communication regarding UGRR and enslavement within the larger community and come up with a cohesive plan about how Kentucky discusses UGRR issues in the past. Conference attendees have an opportunity to view *Through Darkness to Light: Photographs Along the Underground Railroad* exhibit which "features beautifully dramatic color photographs, ephemera, and narratives that together tell the story of the Underground Railroad."

Register: <https://boone.libnet.info/event/1141254>. Make checks payable to Boone County Public Library, mail to BCPL, 1786 Burlington Pike, Burlington, KY 41005 Call BCPL at 859/342-2665 x 8134, or email [localhistory@bcpl.org](mailto:localhistory@bcpl.org)

## UPCOMING COMMUNITY EVENTS

**Behringer-Crawford Museum** is celebrating *50 years of Duveneck* with special events and exhibits through September 29. Visit [bcmuseum.org](http://bcmuseum.org) for more info.

**Dinsmore Homestead** is planning the annual **Derby Day Party, 3-7pm Saturday, May 4**, under the big party tent in the front yard. Fabulous food, terrific music, cash bar, silent auction, men's and ladies' hat contests, tours of the homestead, and so much more. Tickets available — 586-6117 or website [dinsmorefarm.org](http://dinsmorefarm.org).

**Community Activities Fair — Boone County Historical Society** will again participate in the annual **Community Activities Fair** at the Farmers' Market (next to Extension Center), **9am-1pm, Saturday, May 11 (rain or shine)**. Want to volunteer to assist by taking a turn staffing our table? Call Betsy 371-5882 or email [brconrad@fuse.net](mailto:brconrad@fuse.net).

**Big Bone Lick State Historic Site's BioBlitz** Saturday, May 18, 7am-4pm. Celebrate the biodiversity of NKY. Naturalist guides will lead groups on multiple excursions throughout the day to identify different organisms. Free & Open to public. Info: 859/384-3522 or [amelia\\_hulth@ky.gov](mailto:amelia_hulth@ky.gov)

**Dinsmore Homestead 's Summer Tea...1-3pm** Saturday, June 1, Come, join us for tea and home-made summer foods served on the back porch of the historic homestead. Reservations limited, \$30 each. Contact Marea West 859/689-1584 or [marea-west@fuse.net](mailto:marea-west@fuse.net).

**Boone County Farm Tour** will be held **Saturday, June 22**, from 10am—3pm. Save the date and go to [Facebook.com/BooneCountyFarmTour](https://Facebook.com/BooneCountyFarmTour) for more information.

**Friends of Big Bone mtg: 7pm Thurs., June 27, BCPL-Scheben**, Program: Discussion of *The Sixth Extinction* by Elizabeth Kobert.

## PAT YANNARELLA AND VIRGINIA KOHL TO RECEIVE PRESERVATION AWARDS

**Pat Yannarella**, our BCHS Treasurer, has been chosen to receive Boone County Historic Preservation Review Board's **2019 Preservation Volunteer Award** for her dedication to BCHS etc.. *AND ...* BCHS member **Virginia Kohl** has been chosen to receive the Review Board's **2019 Preservation Advocacy Award** for her dedication to Florence history and particularly Main Street's history, etc.

Both awards will be presented at the **2019 Boone County Historic Preservation Awards Reception, 6 to 7:30 pm Thursday, May 9, in the Ferguson Room, Ferguson Community Center at the Historic Boone County Courthouse, 2988 Washington Street, Burlington, KY 41005.**

BCHS members are invited to attend the event which will include light refreshments, but you ***must RSVP by Friday, May 3,*** via phone 859/341-2111, via email [mbecher@boonecountky.org](mailto:mbecher@boonecountky.org); via facebook [www.facebook.com/BCHPRB/](https://www.facebook.com/BCHPRB/) or via <https://www.facebook.com/events/821307548233277/>.

## BOONE COUNTY'S NON-PROFIT ORGANIZATIONS FOCUS ON PRESERVATION AND CONSERVATION

In the interest of protecting historic resources in Boone County, representatives of several organizations have begun meeting to listen, consider, and discuss what can be done to maintain and further the County's historical and conservation integrity. Updates will be forthcoming as this new concept is further developed.

## COOPER HIGH SCHOOL'S FELICITY ENGLAND WINS U.S. HISTORY AWARD IN DOUG LOGAN'S CLASS

Cooper H.S. Social Studies teacher Doug Logan (also a member of our Historical Society), asked Betsy and Steve to judge his students' posters for a project. The students each selected a person who had served in the military, either present or past, relative or not, and create a poster depicting that individual. The posters had to conform with certain requirements he had established. While a number of students won a 1-year BCHS membership, **Felicity England** was the overall winner. *Congratulations, Felicity!*

## THE BCHS MUSEUM

Boone County Historical Society expresses appreciation to the Boone County Judge/Executive and Fiscal Court Commissioners for permission to use the Old County Clerk's Office as a repository for items of historical significance to Boone County's heritage.

Directions: I-71/75 Exit 181 (KY 18 Burlington Pk). Proceed westbound 4.6 miles, turn

right at the first traffic signal (Bullittsville-Burlington Road aka Garrard St.); turn left into the Boone County Administration Building parking lot. The Museum is the small white brick building marked "County Court Clerk's Office...1853" The street address is 2965 Gallatin Street, Burlington, KY 41005.



Artwork by Pattie Purnell

# BOONE COUNTY HISTORICAL SOCIETY

P.O. BOX 23  
FLORENCE, KY 41022-0023

**Daniel Boone Day at Kentucky  
History Center in Frankfort:**  
Saturday, June 1, 10am to 4pm.  
This year marks the 250th anniversary of Daniel Boone's famous trek into Kentucky, and the 227th anniversary of Kentucky statehood!



**Website:** [boonecountykyhistory.org](http://boonecountykyhistory.org)

Newsletter Editor: Betsy R. Conrad  
[brconrad@fuse.net](mailto:brconrad@fuse.net)

## ABOUT THE BOONE COUNTY HISTORICAL SOCIETY

The **mission** of the Boone County Historical Society is to develop awareness and promote appreciation of the history of Boone County, Kentucky. We are fortunate to partner with the Boone County Public Library.

The Boone County Historical Society provides program meetings at 7pm on the third Thursday evenings of January, March, May, July, September and November.

Meetings (except for July) are held at the Boone County Public Library, Main Library, 1786 Burlington Pike, Burlington, Kentucky. July "out-and-about" meetings are held at various locations around the County.

The Society hosts a number of exhibits at the BCHS Museum (*see page 3*) each year. Most items for these exhibits are borrowed on a temporary basis from our members and friends, and do not belong to the Society. We greatly appreciate being entrusted with these loaned items that relate to our exhibits.

Items in our permanent collection have been donated by individuals and families who desire to share with others items of historical significance to Boone County. Their generosity is gratefully appreciated.

**Annual membership fee is \$15 per household, due every January.** This covers the cost of printing and mailing our newsletters. Checks, payable to the Boone County Historical Society, can be mailed to the Boone County Historical Society, P.O. Box 23, Florence, KY 41022-0023.

The Boone County Historical Society has received a 501(c)(3) tax-exempt status — all gifts to the Society are tax deductible.

**All programs and exhibits are free and open to the public.**

Boone County Historical Society expresses appreciation to the Boone County Judge/Executive and Fiscal Court Commissioners for permission to use the Old County Clerk's Office as a repository for items of historical significance to Boone County's heritage.

pository for items of historical significance to Boone County's heritage.

Directions: I-71/75 Exit 181 (KY 18 Burlington Pk). Proceed westbound 4.6 miles, turn right at the first traffic signal (Bullittsville-Burlington Road aka Garrard St.); turn left into the Boone County Administration Building parking lot. The Museum is the small white brick building marked "County Court Clerk's Office...1853." The street address is 2965 Gallatin Street, Burlington, KY 41005.

### Officers and Boardmembers:

President:	Betsy R. Conrad
Vice President:	Thomas Schiffer
Secretary:	Pat Yannarella
Treasurer:	Steve Conrad
Board Members:	Betty Poole
	Ron Buckley
	Brent Johansen
	Carol Schiffer
	Kathy Meyers