

Boone County Historical Society



November—December 2021

2022 MEETINGS & EVENTS

All meetings at the Boone County Public Library will start at 6:30 pm

No January 2022 meeting

Thursday, March 17, 2022:
Bridget Striker will present a program on the Boone County Borderlands Archive and History Center. The meeting will include the election of officers & directors and by-law changes.

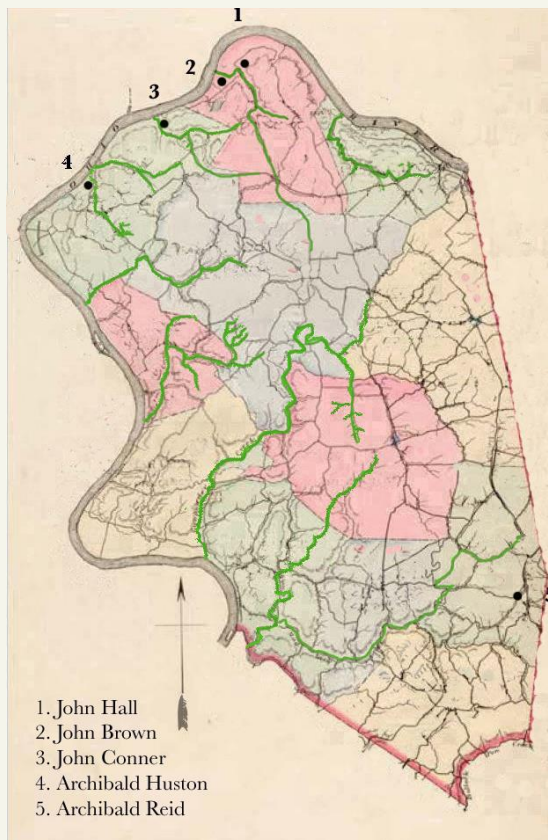
Thursday, May 19, 2022:
Bob Schrage & Dave Schroeder will introduce their book on Lost Northern Kentucky.

Thursday, July 21, 2022:
The annual "Out and About" TBA

Thursday, September 15, 2022: Joetta Prost will present Universalist Churches: Complex History before and after the Civil War.

DR. RICHARD CRISLER TO SPEAK AT OUR NOVEMBER 18 MEETING AT 6:30 PM.

Dr. Crisler will talk about his research on the earliest history of Boone County and the period before 1798 when it was part of Campbell



County. The presentation will talk about the parts of the county that were first settled. The earliest roads that were created and the development of additional roads. He shows the first five judges that were appointed and where they lived. He also

shows the tax records of the early settlers including how many horses and slaves were taxed.

New Kentucky Historical Highway Marker Unveiled

On behalf of the Boone County Fiscal Court and the Preservation Review Board, this new Highway Marker was recently unveiled. It commemorates the old Boone County courthouse. The highway marker for *From Craigs Camp to Burlington* was relocated in the new Burlington Commons Park across the street.



Viewing Historical Society Presentations

We would like to remind you that past presentations of Historical Society meetings are maintained on the Boone County Public Library website. Here are the steps you can take to get to these presentations:

In your Internet browser, login to WWW.BCPL.org

Towards the top of the library home page in the banner is the link to Local History; click on "Local History"

Towards the bottom of the Local History page, on the left, is Boone County Historical Society Lectures. Click on the link called "Browse the lectures on YouTube"

On the right side of this page is the listing of video presentations that you can view.

There are over 150 video clips on this website. Some presentations had to be divided into several parts but they are all there to view.

Here are just some examples of presentations you can view from your computer:

Boone County Music Makers

History of Anderson Ferry

Lost River Towns of Boone County

History of Gaines Tavern

History of the Green Line bus route and CVG.

Christmas Tree Lighting Events

Burlington

This year, the Parks department will have a Christmas Tree lighting event on Saturday, December 4th between 4:00 and 7:00 pm at the newly completed Burlington Commons which is located across Burlington Pike from the Boone County Administration building. Refreshments including snacks and hot Cocoa will be served.



New Burlington Commons Park

Florence

The City of Florence will have their annual Christmas Tree lighting event on Tuesday, December 7 between 6:00 and 8:00 pm at the Florence Government Center located at 8100 Ewing Boulevard in Florence. Refreshments will be served.

THE BCHS MUSEUM

Boone County Historical Society expresses appreciation to the Boone County Judge/Executive and Fiscal Court Commissioners for permission to use the Old County Clerk's Office as a repository for items of historical significance to Boone County's heritage.

Directions: I-71/75 Exit 181 (KY 18 Burlington Pk). Proceed west-bound 4.6 miles, turn right at the first traffic signal (Bullittsville-

Burlington Road aka Garrard St.); turn left into the Boone County Administration Building parking lot. The Museum is the small white brick building marked "County Court Clerk's Office...1853" The street address is 2965 Gallatin Street, Burlington, KY 41005.



Artwork by Pattie Purnell

BOONE COUNTY HISTORICAL SOCIETY

P.O. BOX 23
FLORENCE, KY 41022-0023



Website: boonecountykyhistory.org

Newsletter Editor: Stephen D. Conrad
sdconrad@fuse.net

ABOUT THE BOONE COUNTY HISTORICAL SOCIETY

The **mission** of the Boone County Historical Society is to develop awareness and promote appreciation of the history of Boone County, Kentucky. We are fortunate to partner with the Boone County Public Library.

The Boone County Historical Society provides program meetings at 7pm on the third Thursday evenings of March, May, July, September and November.

Meetings (except for July) are held at the Boone County Public Library, Main Library, 1786 Burlington Pike, Burlington, Kentucky. July "out-and-about" meetings are held at various locations around the County.

The Society hosts a number of exhibits at the BCHS Museum (*see page 3*) each year. Most items for these exhibits are borrowed on a temporary basis from our members and friends, and do not belong to the Society. We greatly appreciate being entrusted with these loaned items that relate to our exhibits.

Items in our permanent collection have been donated by individuals and families who desire to share with others items of historical significance to Boone County. Their generosity is gratefully appreciated.

Annual membership fee is \$15 per household, due every March. This covers the cost of printing and mailing our newsletters. Checks, payable to the Boone County Historical Society, can be mailed to the Boone County Historical Society, P.O. Box 23, Florence, KY 41022-0023.

The Boone County Historical Society has received a 501(c)(3) tax-exempt status — all gifts to the Society are tax deductible.

All programs and exhibits are free and open to the public.

Boone County Historical Society expresses appreciation to the Boone County Judge/Executive and Fiscal Court Commissioners for permission to use the Old County Clerk's Office as a re-

pository for items of historical significance to Boone County's heritage.

Directions: I-71/75 Exit 181 (KY 18 Burlington Pk). Proceed westbound 4.6 miles, turn right at the first traffic signal (Bullittsville-Burlington Road aka Garrard St.); turn left into the Boone County Administration Building parking lot. The Museum is the small white brick building marked "County Court Clerk's Office...1853." The street address is 2965 Gallatin Street, Burlington, KY 41005.

Officers and Boardmembers:

President:	Hillary Delaney
Vice President:	Thomas Schiffer
Secretary:	Pat Yannarella
Treasurer:	Steve Conrad
Board Members:	Ron Buckley
	Brent Johansen
	Carol Schiffer
	Ginny Kohl