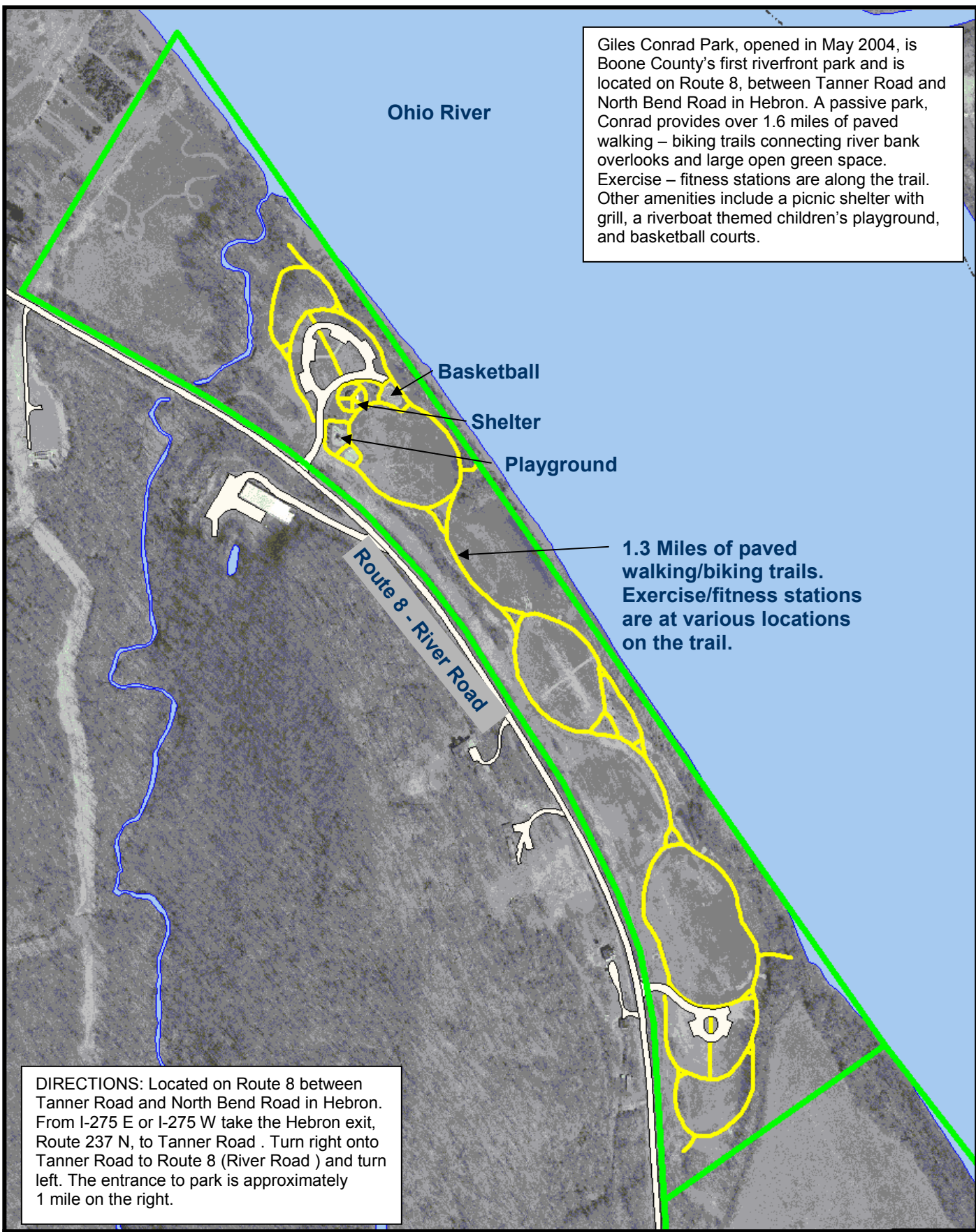


Giles Conrad Park, opened in May 2004, is Boone County's first riverfront park and is located on Route 8, between Tanner Road and North Bend Road in Hebron. A passive park, Conrad provides over 1.6 miles of paved walking – biking trails connecting river bank overlooks and large open green space. Exercise – fitness stations are along the trail. Other amenities include a picnic shelter with grill, a riverboat themed children's playground, and basketball courts.



Ohio River

Basketball

Shelter

Playground

Route 8 - River Road

1.3 Miles of paved walking/biking trails. Exercise/fitness stations are at various locations on the trail.

DIRECTIONS: Located on Route 8 between Tanner Road and North Bend Road in Hebron. From I-275 E or I-275 W take the Hebron exit, Route 237 N, to Tanner Road . Turn right onto Tanner Road to Route 8 (River Road) and turn left. The entrance to park is approximately 1 mile on the right.



Giles Conrad Park 7500 River Rd, Hebron, KY 41048
Boone County Parks & Recreation 859-334-2117

