

**ATTENTION:**

- There is no cell phone coverage.
- Do not hike alone.
- These trails are NOT paved.
- Let someone know you're going to this park before you leave.
- Wear appropriate hiking attire.
- Do not go off the trail if at all possible.
- This park is closed during hunting season.

Middle Creek merged with the Camargo Hunt property and is now 230 acres of natural woodland, wild flowers and wildlife. It has 8.489 miles of unpaved trails for hiking and horseback riding. A picnic area is available at the beginning of the trails just off the parking area.

**Middle Creek Trails**

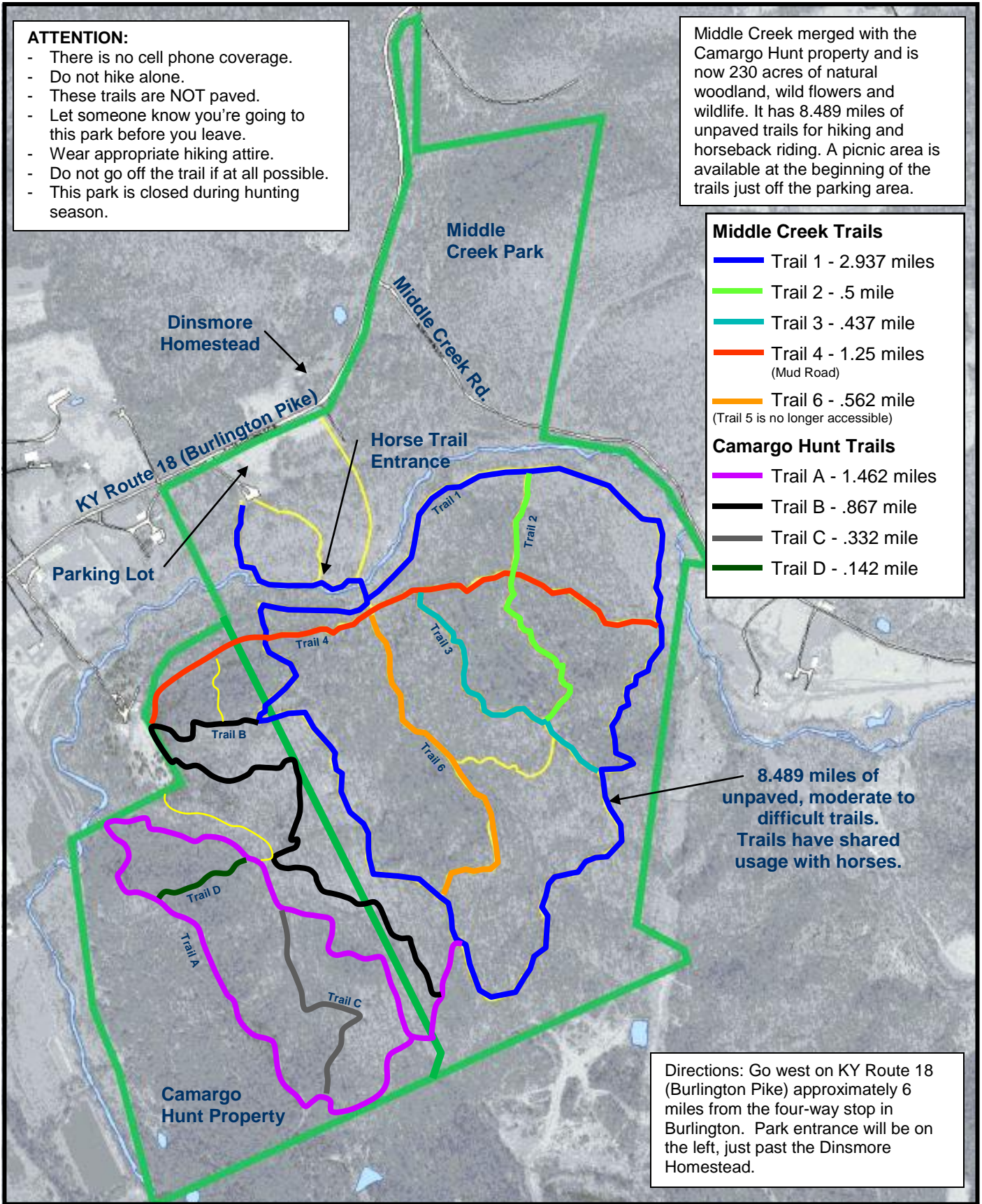
- Trail 1 - 2.937 miles
- Trail 2 - .5 mile
- Trail 3 - .437 mile
- Trail 4 - 1.25 miles (Mud Road)
- Trail 6 - .562 mile (Trail 5 is no longer accessible)

**Camargo Hunt Trails**

- Trail A - 1.462 miles
- Trail B - .867 mile
- Trail C - .332 mile
- Trail D - .142 mile

8.489 miles of unpaved, moderate to difficult trails. Trails have shared usage with horses.

Directions: Go west on KY Route 18 (Burlington Pike) approximately 6 miles from the four-way stop in Burlington. Park entrance will be on the left, just past the Dinsmore Homestead.



# Middle Creek Park

35501 Middlecreek Road, Burlington, KY 41005

**Boone County Parks & Recreation** 859-334-2117



North