
CHAPTER 10

TRANSPORTATION IMPROVEMENTS

Industrial Road

Currently, Industrial Road is being widened from 2 lanes to 5 lanes to benefit the employers in the Northern Kentucky Industrial Park. Construction is underway to the intersection of U.S. 25. The widening of Industrial Road will also benefit patrons of the Champion Window Field by allowing for more traffic movements and capacity. The design of the improved Industrial Road is included in this document.

U.S. 42

Several changes to U.S. 42 were identified. The first proposed change involves redesigning the existing Fantasy Frontier Drive to right turn in and out near the existing BP gas station. In addition, it is recommended that the westbound left turn lane crossover be removed to avoid potential turning conflicts. A second change includes making an existing curb-cut serving the Quality Inn & Suites and Dunkin Donuts a right-turn in and right-turn out due to the projected increase in traffic using Freedom Way.

Tanners Lane

A recommended improvement is to realign Tanners Lane with the existing road network leading back to the existing office buildings and the former Moore's Nautilus building. Further, the realignment will allow some extension of the road network to serve the existing residential properties located along Ewing Boulevard. These properties may redevelop into office uses. The new alignment will better serve the existing office properties.

I-75 / U.S. 42 Interchange

The updated *Boone County Transportation Plan* recommends the reconfiguration of the I-75/U.S. 42 Interchange to provide for a more direct connection between I-75 and Industrial Road to the Northern Kentucky Industrial Park. It would remove truck and auto traffic from the heavily congested section of U.S. 42 - the heart of the *Central Florence Strategic Plan*. The project would also include a recommendation to re-align the northbound entrance and exit ramps.

Possible Road Realignments - Industrial Road Vicinity

www.boonecountygis.com



Copyright 2008 Boone County GIS. Reproduction by any means without the express permission of the Boone County Planning Commission is prohibited.

Data used to create this map were compiled from sources that comply with National Map Accuracy Standards. Boone County GIS extends no warranty with respect to the accuracy or content of the information provided by this map. This map should be used for general planning purposes only.



Map Created: 06/18/2008

0 100 200 400 600 800 Feet

1 inch equals 200 feet

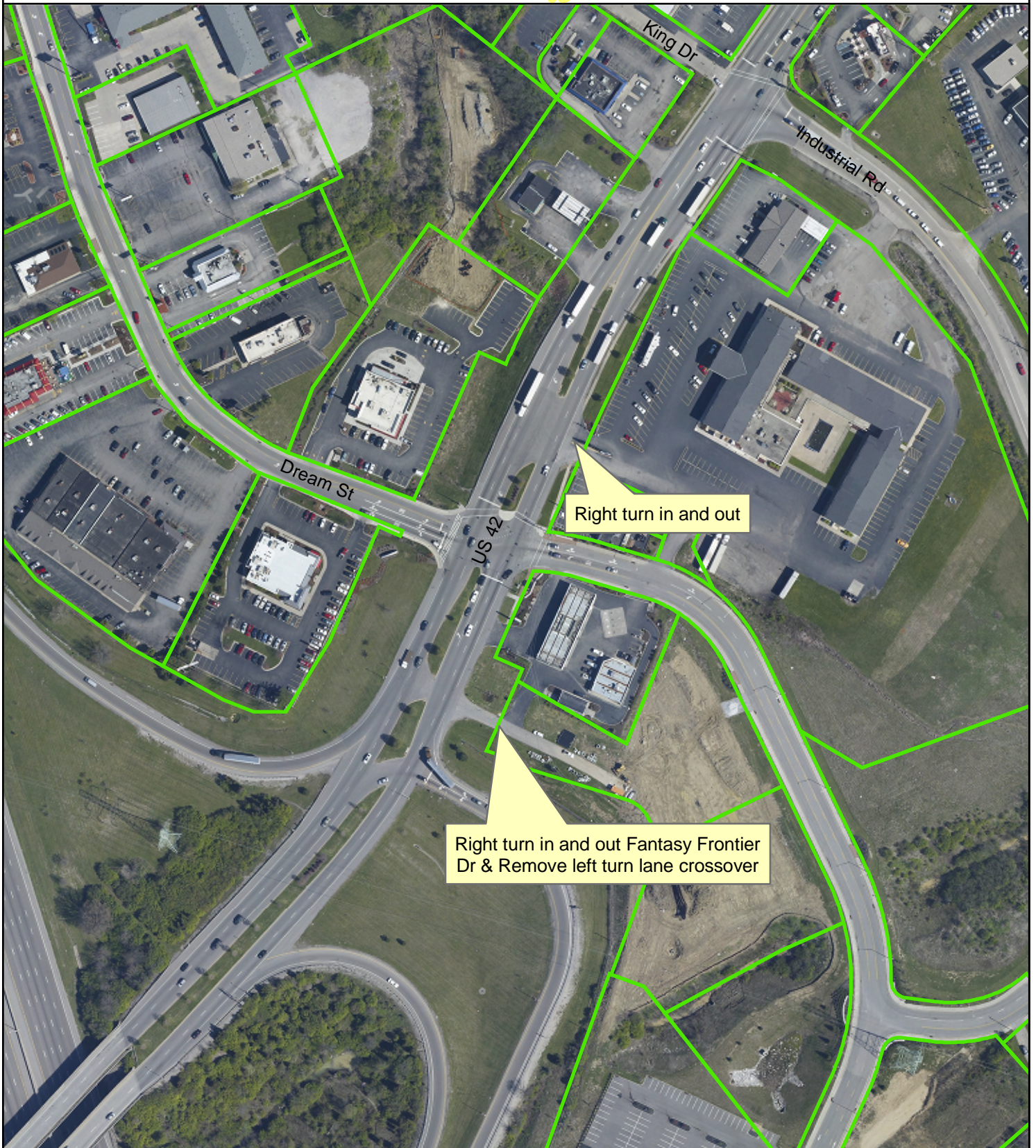


Boone County GIS - Putting Northern Kentucky on the Map

Page: 10.2

US 42 Proposed Improvements

www.boonecountygis.com



Copyright 2008 Boone County GIS. Reproduction by any means without the express permission of the Boone County Planning Commission is prohibited.

Data used to create this map were compiled from sources that comply with National Map Accuracy Standards. Boone County GIS extends no warranty with respect to the accuracy or content of the information provided by this map. This map should be used for general planning purposes only.



0 100 200 400 600 800 Feet

1 inch equals 200 feet



Boone County GIS - Putting Northern Kentucky on the Map

Page: 10.3

Map Created: 06/18/2008

Tanners Ln / Ewing Blvd Possible Realignment #1

www.boonecountygis.com



Copyright 2008 Boone County GIS. Reproduction by any means without the express permission of the Boone County Planning Commission is prohibited.

Data used to create this map were compiled from sources that comply with National Map Accuracy Standards. Boone County GIS extends no warranty with respect to the accuracy or content of the information provided by this map. This map should be used for general planning purposes only.



Map Created: 06/18/2008

0 100 200 400 600 800 Feet

1 inch equals 200 feet



Boone County GIS - Putting Northern Kentucky on the Map

Page: 10.4

Tanners Ln / Ewing Blvd Possible Realignment #2

www.boonecountygis.com



Copyright 2008 Boone County GIS. Reproduction by any means without the express permission of the Boone County Planning Commission is prohibited.

Data used to create this map were compiled from sources that comply with National Map Accuracy Standards. Boone County GIS extends no warranty with respect to the accuracy or content of the information provided by this map. This map should be used for general planning purposes only.



Map Created: 06/18/2008

0 100 200 400 600 800 Feet

1 inch equals 200 feet

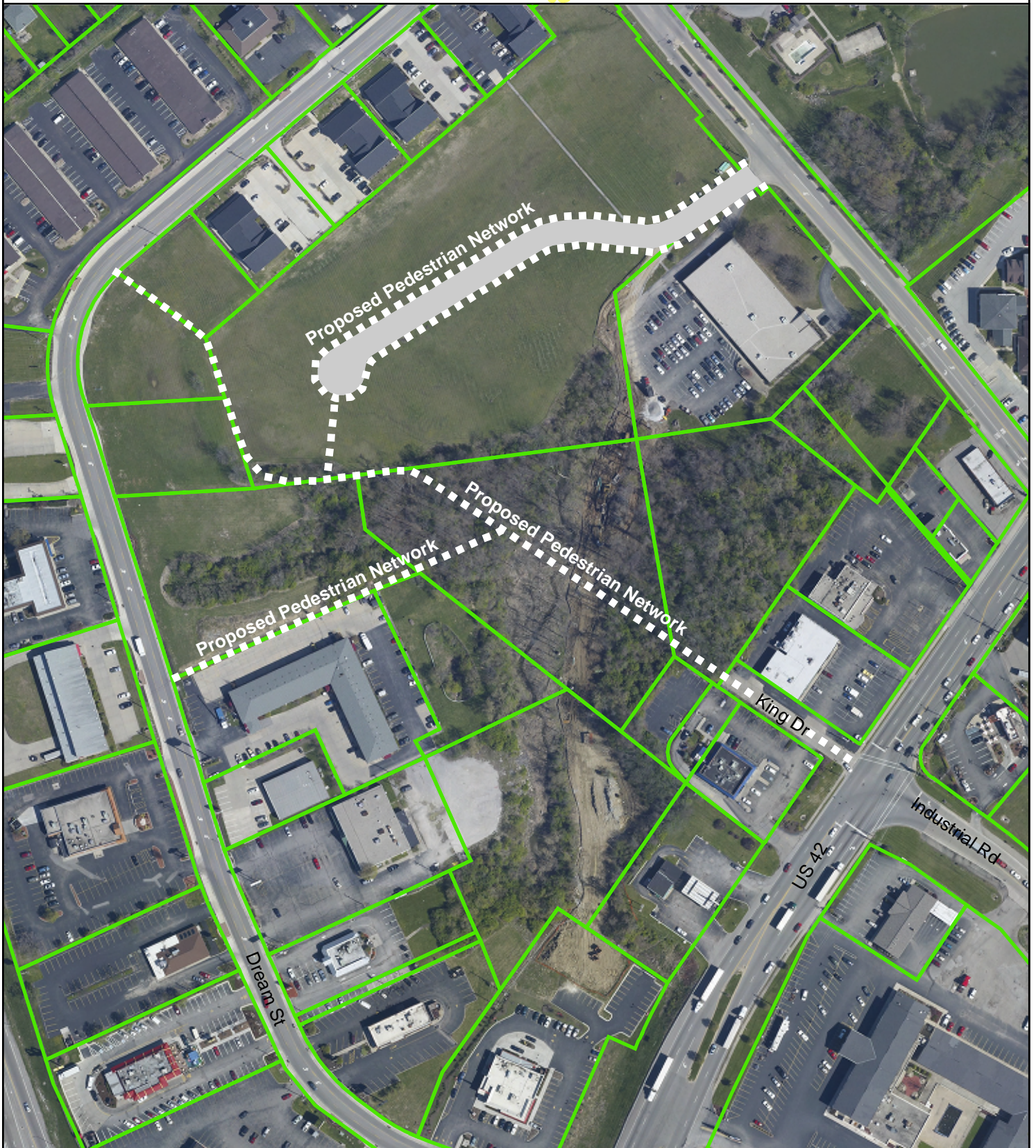


Boone County GIS - Putting Northern Kentucky on the Map

Page: 10.5

Dream St / US 42 Pedestrian Network Link

www.boonecountygis.com



Copyright 2008 Boone County GIS. Reproduction by any means without the express permission of the Boone County Planning Commission is prohibited.

Data used to create this map were compiled from sources that comply with National Map Accuracy Standards. Boone County GIS extends no warranty with respect to the accuracy or content of the information provided by this map. This map should be used for general planning purposes only.



0 100 200 400 600 800 Feet

1 inch equals 200 feet



Boone County GIS - Putting Northern Kentucky on the Map

Page: 10.6

Map Created: 06/18/2008