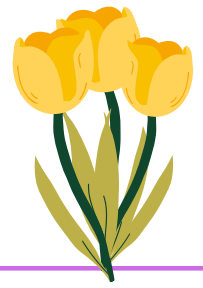


APRIL 2023

BRADBURY NEWS



"Preserving Rural Tranquility"



Spring Community Clean-Up



Don't miss the City of Bradbury's bi-annual Community Clean-Up! Burrtec will be collecting non-hazardous waste. Please bring your Burrtec trash bill for proof of residency.

Thursday, April 13th: 8 a.m. - 5 p.m.

Friday, April 14th: 8 a.m. - 5 p.m.

*Saturday, April 15th: 8 a.m. - 2 p.m.

*On Saturday, April 15th, as part of the Clean-Up, there will also be a Shred Event and Compost Giveaway!

For more information, please call Burrtec at (626) 932-1558.

Drop-Off Locations:

- City Hall (E-Waste accepted at this location)
- Corner of Deodar Lane & Bliss Canyon Road
- Corner of Mount Olive & Gardi Street (E-Waste accepted at this location)

Acceptable Items:

Furniture: Chairs, Couches, Mattresses, Tables

Appliances: Dishwashers, Refrigerators, Stoves, Washers/Dryers, Water Heaters

Others: Bundles of lumber/tree branches

(48" max length), Toys, Electronic Waste (Collection of Electronic Waste will be located at City Hall and at Mount Olive & Gardi St.)

MAYOR

Bruce Lathrop, District 4

Bruce.Lathrop@CityofBradbury.org

MAYOR PRO-TEM

Rick Barakat, District 3

Rick.Barakat@CityofBradbury.org

COUNCIL

Dick Hale, District 1

Dick.Hale@CityofBradbury.org

Montgomery Lewis, District 2

Monte.Lewis@CityofBradbury.org

Elizabeth Bruny, District 5

EBruny@CityofBradbury.org

Quote of the Month:

"Spring is the time of year when it is summer in the sun and winter in the shade."

-Charles Dickens



SEE SOMETHING? SAY SOMETHING!



As residents of Bradbury, there are a few steps you can take to help reduce burglaries in your neighborhood:

1. Know your neighbors and neighborhood. If you know your neighbors, it is easier to note suspicious activity.
2. Know the vehicles your neighbors drive. Take note of any vehicle you don't recognize.
3. When you leave your home: leave lights on at night, close your curtains/blinds, and do what you can to make it look like someone is home.
4. Install an alarm and cameras. Once they are installed, make sure to keep them on at all times. If you would like tips for security camera placement, our Community Services Officer is available Thursday - Saturdays. If you are interested, please call City Hall (626) 358-3218 or email cityhall@cityofbradbury.org

If you see any suspicious activity, people, or cars you are not familiar with, please report it by contacting the Los Angeles Sheriff's Department- Temple Station at (626) 285-7171. If there is an emergency, please dial 911. Remember if you see something, say something!

Living with Wildlife



One of the treats of living in Bradbury is the fact that wild animals are our neighbors. The goal is to live in harmony with the variety of wildlife that lives in Bradbury, including Black Bears. If a bear approaches you, it is your responsibility to move away and maintain a safe distance. Here are some tips to 'bear-proof' your home from the National Park Service:

- Garbage problems can be solved with the purchase and correct use of a bear-proof garbage container.
- Wait to put trash out until the morning of collection day.
- Don't leave trash, groceries or animal feed in your car.
- Keep garbage cans clean and deodorize them with bleach or ammonia.
- Harvest fruit off trees as soon as it is ripe, and promptly collect fruit that falls.
- Avoid using bird feeders. They are a powerful attractant.
- Don't leave any scented products outside, even non-food items such as suntan lotion, insect repellent, soap or candles.
- Keep barbecue grills clean.
- Keep pet food and pets inside.
- Securely block access to potential hibernation sites such as crawl spaces under decks and buildings.
- Keep doors and windows closed and locked. Scents can lure bears inside.
- Remove all food from homes and cabins that will be unoccupied for an extended period of time.

If you would like specific tips on how to fortify your property from wildlife, our Community Services Officer is available from Thursday - Saturday. The City's CSO is a former animal control officer and has experience with standard procedures around wildlife. If you are interested, please call City Hall (626) 358-3218 or email cityhall@cityofbradbury.org. For wildlife concerns, contact Department of Fish and Wildlife South Coast Region at (858) 467-4201.

Explore the Duarte Unified School District!



DUSD is a wonderful option for the youth of Bradbury. Did you know, there are over 41 students from Bradbury in attendance across the 9 schools in the district? With a variety of programs and progressive initiatives designed specifically with learning in mind, DUSD guides its students on the road to success. A few of the District's offerings include:

- Model Preschool Programs for children ages 3-4 years at three locations
- Arts and sciences education in partnership with industry leaders including CSArts-SGV & City of Hope
- The only Early College Dual Enrollment-Degree Bearing Grade 9-12 program in the region and more!

As a Bradbury resident, if you are interested in learning more about Duarte Unified School District schools you are welcome to arrange a tour of any of the DUSD schools. For more information, please visit: <http://www.come2duarteusd.com/>

City Council Highlights

The following actions were taken at the March City Council meeting:

- *Presentation from the Los Angeles County Fire Department regarding brush clearance inspections.*
- *Approval to remove the option of virtual attendance for all public meetings.*

The next City Council meeting will take place at City Hall on April 18, 2023 at 7 p.m.

HHW/E-WASTE COLLECTION

All residents of Los Angeles County may utilize temporary, one-day collection events throughout the County to properly dispose of HHW/E-Waste FREE of charge. Events are from 9 a.m. to 3 p.m. (unless otherwise noted). Rain or shine, collection events will be held as scheduled below:

- **04/15/23- CITY OF SANTA CLARITA @ 9 A.M.**
26455 ROCKWELL CANYON ROAD
- **05/06/23- CITY OF IRWINDALE @ 9 AM**
160 LONGDEN AVE

Got Leftover Paint? Recycle it!

Did you know oil-based paint and latex-based paint waste is hazardous? Make sure to dispose of your paint safely! Below is a list of local places you can recycle your leftover paint:

- Acrylatex Coatings and Recycling
1001 W Kirkwall Road, Azusa, CA
- Montage Paint
600 W Route 66 Ste 101, Glendora, CA
- Dunn-Edwards
630 S Grand Ave Ste 01-103, Glendora, CA
- Dunn-Edwards
3897 E Colorado Blvd, Pasadena, CA

For any other questions about disposing of paint, please call 1-888-CLEANLA.

BRADBURY CALENDAR

First Friday Closure

Friday, April 7, 2023

Public Safety Committee Meeting

Thursday, April 13, 2023

Spring Community Clean-Up

Thursday, April 13 - Saturday, April 15

City Council Meeting

Tuesday, April 18, 2023

Planning Commission Meeting

Wednesday, April 19, 2023

April 2023



Sunday	Monday	Tuesday	Wednesday	Thursday	Friday	Saturday
						1
2	3	4	5	6	7 <i>City Hall Closed</i>	8
9	10	11	12	13 <i>Public Safety Committee Meeting</i>	14 <i>Spring Community Clean-Up</i>	15 <i>Spring Community Clean-Up</i>
16	17	18 <i>City Council Meeting</i>	19 <i>Planning Commission Meeting</i>	20	21	22
23 30	24	25	26	27	28	29



Bradbury City Hall
600 Winston St
Bradbury, CA 91008
Phone: 626-358-3218
Fax: 626-303-5154
E-mail: cityhall@cityofbradbury.org

City Hall Hours
Monday through Friday,
8:30 a.m. to 5:00 p.m.

Building Department Hours
Tuesday through Thursday
8:30 a.m. to 11:00 a.m.

Staff

Kevin Kearney, City Manager
Sophia Musa, Management Analyst
Claudia Saldana, City Clerk
Diane Jensen, Assistant City Clerk
Cary Reisman, City Attorney
Mark Handler, Building Inspector
David Gilbertson, City Engineer
Jim Kasama, City Planner
Suresh Malkani, Finance Director

Planning Commission

Chair Chelsea Halbmam, District 5
Vice-Chair Darlene Kuba, District 3
Frank Hernandez, District 1
Melodie Szymkowski, District 2
Robert Jones, District 4

City Treasurer

Laurie Stiver