

MAYOR

Montgomery Lewis, District 2
Monte.Lewis@CityofBradbury.org

MAYOR PRO-TEM

Elizabeth Bruny, District 5
EBruny@CityofBradbury.org

COUNCIL

Dick Hale, District 1
Dick.Hale@CityofBradbury.org

Rick Barakat, District 3
Rick.Barakat@CityofBradbury.org

Bruce Lathrop, District 4
Bruce.Lathrop@CityofBradbury.org

Quote of the Month

*"What is Christmas?
It is tenderness for the
past, courage for the
present, hope for the
future."*

~ Agnes M. Pharo



Bradbury News

"Preserving Rural Tranquility"

December 2020

Santa's Speedway Christmas Lights Drive-Thru

Typically home to weekly racing events from NASCAR to the All-Star Showdown, Irwindale Speedway has something special this holiday season! Santa's Speedway Christmas Lights Drive-Thru is a truly one-of-a-kind, special event. This spectacular show of lights lets everyone celebrate safely during the COVID-19 Pandemic, while still taking part in the magic of Christmas.



From November 25 through January 20, the Speedway will be transformed into a magical display of lights and holiday attractions, including a record-setting Christmas Tree of lights that towers at over 110 feet. Highlights of this magical display of lights include: Santa's Village, Giant Sized Holiday Treats, Christmas Under the Sea, Camping Christmas Land, and Christmas Wonderland. Located at 500 Speedway Drive in Irwindale, it's sure to be a lot of fun for everyone!

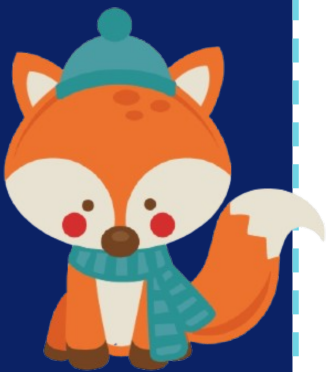
For more information, and to purchase tickets, please visit:
<https://www.santasspeedway.com> or call (626) 240-1173.



Christmas Tree Recycling

Burrtec will collect and recycle Christmas Trees from single-family residences. Please place your trees at the curbside during the 2-week period of December 26 - January 29 on your trash collection day. Also remember to remove all ornaments/decorations, tree stands of any kind, tinsel, nails, plastic containers, and lights. Flocked trees cannot be accepted. Trees taller than 4 feet must be cut in half.

Should you have any questions, or for more information, please call: 800-325-9417.

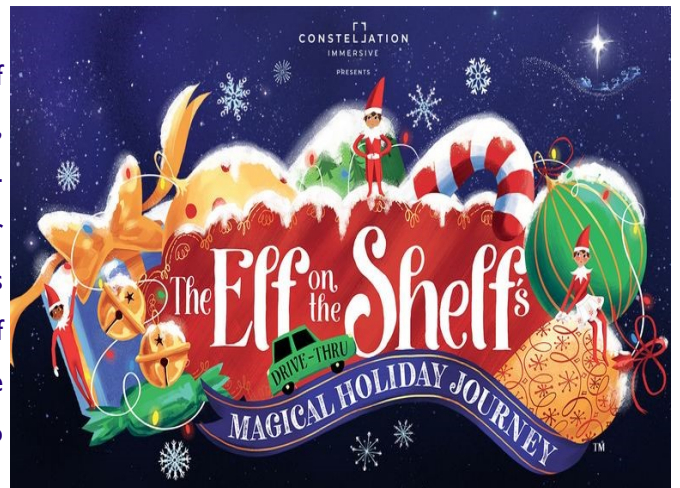
BRADBURY
NEWS

Elf on the Shelf

With rosy cheeks, a bright smile and definitely knows-too-much eyes, the Elf on the Shelf is a Christmas staple in homes across the country. And, like many holiday events this year, the Elf on the Shelf is headed for the drive-thru!

Running through January 3, 2020, The Elf on the Shelf's Magical Holiday Journey, lets you roll up to the Fairplex in Pomona before magically shrinking down to elf-size and embarking on an elf-sized quest to fix Santa's sleigh. With easy-to-follow narration and music available via a smartphone app, it's sure to be a one-of-a-kind experience.

Featuring a dazzling display of Christmas lights, and live actors, you'll be treated to delightfully-committed elves measuring your car's Christmas spirit, juggling pins or balancing on a tightrope of oversized lights. There's even one who will accept your letter to Santa!



Spread out on the mostly flat Fairplex in Pomona, the Elf on the Shelf made the charming decision to route most of its drive-thru on the wooded roads of the hills behind the flower pavilion. There you'll find a tree canopy of string lights, flurries of snow, and a village of elves replete with glittery décor. Also featured are the toy repair workshops, gingerbread villages, and a tractor pulling a train.

Buying tickets in advance is recommended, as guests are scheduled by sessions and should arrive 15 minutes before your expected entrance time.

To purchase tickets, please visit: <https://fairplex.com>.



BRADBURY
NEWS



Spark of Love Toy Drive

Holidays are often the time of giving and receiving. Whether it's gifts, a homecooked meal, or simply the company of those you love, we all have something to be grateful for this holiday season. This year, as part of the annual "Spark of Love Toy Drive," we ask you to join ABC7, Southern California Firefighters, and Toys for Tots in the largest community toy drive in the nation.

The annual "Spark of Love Toy Drive" which is sponsored by Subaru, Toys for Tots, ABC7, and others, has begun with the start of the holiday season. Fire departments all over Southern California are taking part. While in past years, fire stations have been open for drop-offs, COVID-19 safety protocols prevent fire stations from collecting toys in the traditional manner this year. However, giving to the "Spark of Love Toy Drive" has also never been easier. Over the past two and a half decades, the "Spark of Love Toy Drive" has successfully collected more than nine million toys!

Due to the COVID-19 pandemic and devastating wildfires, community partners anticipate that this year's requests for toys will be greater than ever. To help meet this historic demand and, to ensure that deserving kids receive some holiday joy, "Spark of Love Toy Drive" is going online — transitioning to an all-virtual effort by partnering with **myregistry.com**.

Thanks to the all-virtual transition, donating to the "Spark of Love Toy Drive" is safe, quick, and convenient through the Spark of Love Toy Gift Registry. Here's how:

- 1) Buy a toy at myregistry.com/giftlist/sparkoflove, or
- 2) Text to Give: Text "SPARK" to 24365, or
- 3) Donate online by going to supportlafd.kindful.com to make a donation via credit card.

Toys will be sent to the Spark of Love Toy Central at the Los Angeles City Fire Department where they will be sanitized, sorted and distributed evenly to Los Angeles, San Bernardino, Orange, Ventura and Riverside counties. All proceeds will go to buying toys or sports equipment for the children and teens in need.

For more information about the Spark of Love Toy Drive, and a list of sponsors, please visit: www.abc7.com.

BRADBURY
NEWS

Winter Safety Tips

The holiday season is a time of joy and family, filled with wonderfully decorated trees and houses draped in twinkling lights. Unfortunately, every year, fire departments get called out to house fires caused by dry trees and holiday lights.

Here are some helpful tips from the Los Angeles County Fire Department for keeping you, your family, and your home safe during the holidays.

Holiday Lights

- Always maintain holiday lights. Every year, before putting them up, check for frayed wires, bare spots, gaps in the insulation, cracked or broken sockets, and excessive kinking or wear.
- Unless the directions specify otherwise, do not link more than three strands of lights.
- Check the wires periodically; they should not be warm to the touch.
- Do not leave holiday lights on unattended.

Holiday Decorations

- Use only non-flammable or fire-retardant decorations.
- Decorations should always be hung away from heat sources.
- Ensure that your tree and decorations are not blocking any exits.
- Never place wrapping paper in the fireplace.

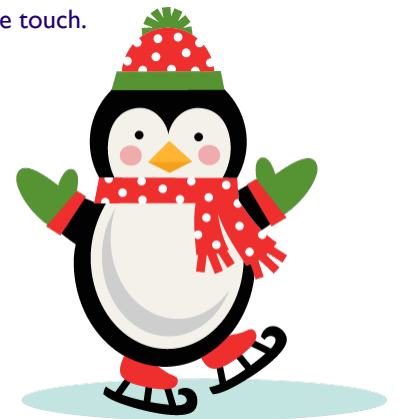
Christmas Tree Safety

- If you're using an artificial tree, check for a statement/label specifying that it is fire-resistant.
- If you're using a real tree, be sure to check it for freshness: needles are green, hard to remove from branches, do not break when bent, and a tree trunk that is sticky with resin.
- Always place trees away from radiators and heat sources, and use a sturdy, water-holding stand.
- Use thin guy-wires to secure large trees to the wall and/or ceiling.

Candle Care

- Never leave a burning candle unattended. Consider battery-operated candles as an alternative.
- Never place lit candles on a tree. Place them in a stable candle holder.
- Keep candles at least 12 inches away from all flammable material, decorations and wrapping paper.
- Make sure to keep lit candles away from children, and in an area where they cannot be knocked or blown over.

Discover more safety tips by visiting: fire.lacounty.gov.



Animal of the Month



Reindeer are perhaps the most iconic of Christmas animals. They pull Santa's sleigh, have red noses, names, and fly. Here are some fascinating facts you may not have known: 1) In North America, reindeer are also

called caribou. 2) Both males and females grow antlers. 3) Some migrate over 3,000 miles a year—more than any other land mammal. 4) Reindeer have been herded by several Arctic and Subarctic peoples. 5) The name “reindeer” is of Norse origin (from the old Norse word “hreinn” for deer) and has nothing to do with the reins of a sled. 6) The name “caribou” comes to us through the Mi'kmaq “qalipu,” meaning “snow shoveler.” Visit: <http://blog.nwf.org> for more facts!

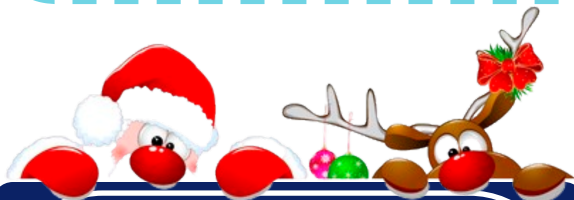
HHW/E-WASTE

Royal Oak Middle School
Saturday, December 5, 2020
9:00 a.m. to 3:00 p.m.
303 Glendora Avenue
Covina, CA 91724

Brackett Field
Saturday, December 19, 2020
9:00 a.m. to 3:00 p.m.
Fairplex Drive & West McKinley Avenue
La Verne, CA 91750



Between Thanksgiving and New Year's Day the U.S. Postal Service delivers an estimated 910 million packages — in addition to almost 15 billion pieces of mail.



Storm Water Pollution—All Drains Lead to the Ocean

The storm drain system is a network of gutters, inlets, underground pipes, and concrete channels that run throughout the City. All storm drains eventually drain into the ocean. Any pollutants in the storm water harm the delicate aquatic ecosystem. Please report illegal dumping of substances into the storm drains to the City at 626-358-3218 or to L.A. County Public Works at 800-303-0003.



City Council Highlights

The City Council took the following actions on, **Tuesday, November 17:**

- 1) Reviewed and approved Administrative Policy No. 20-01: Identification Card Policy — which creates regulations for ID cards for the City Council, Public Safety Committee Members, and employees.
- 2) Final Acceptance of the Winston Avenue Sewer Improvement Project.
- 3) Discussed Use of CalRecycle Funds — Per the discussion at the October 2020 meeting, the City reached out to the City of Monrovia, which proposed the purchase of two (2) water bottle-fill drinking fountains for the fire-impacted Canyon Park and/or the Camp Trask area.

Meeting agendas are posted at the City Hall entrance gate. The December 15, 2020 agenda will be available on the City's website by 5:00 p.m. on Friday, December 11th. To view upcoming agendas and prior City Council meeting minutes, please visit <http://cityofbradbury.org/city-hall/city-council/agendas-minutes>.

CALENDAR

Planning Commission Meeting

Wednesday, December 2

Hanukkah Begins/Ends

Thursday, December 10 to

Friday, December 18

City Council Meeting

Tuesday, December 15

City Hall Closed - Christmas Eve

Thursday, December 24

City Hall Closed - Christmas Day

Friday, December 25

City Hall Closed - Winter Break

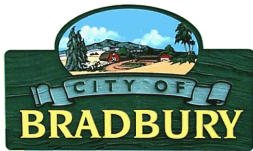
Saturday, December 26, 2020 to

Friday, January 1 2021



DECEMBER 2020

Sun	Mon	Tue	Wed	Thu	Fri	Sat
		1	2 PLANNING COMMISSION MEETING	3	4	5
6	7	8	9	10 HANUKKAH BEGINS	11	12
13	14	15 CITY COUNCIL MEETING	16	17	18 HANUKKAH ENDS	19
20	21	22	23	24 CHRISTMAS EVE	25 CHRISTMAS DAY	26
27	28 CITY HALL CLOSED	29 CITY HALL CLOSED	30	31		



Bradbury News

600 Winston Ave

Bradbury, CA 91008

Phone: 626-358-3218

Fax: 626-303-5154

E-mail: cityhall@cityofbradbury.org

City Hall Hours

Monday through Friday,

8:30 a.m. to 5:00 p.m.

Building Department Hours

Tuesday through Thursday

8:30 a.m. to 11:00 a.m.

Planning Department Hours

Tuesday and Wednesday

8:30 a.m. to 11:00 a.m.

STAFF

- Kevin Kearney, City Manager
- Claudia Saldana, City Clerk
- Cary Reisman, City Attorney
- Steve Bailey, Building Inspector
- David Gilbertson, City Engineer
- Jim Kasama, City Planner
- Lisa Bailey, Finance Director
- Mina Kasama, Management Analyst

PLANNING COMMISSION

- Chairperson Frank Hernandez, District 1
- Vice-Chair Robert Jones, District 4
- Bill Novodor, District 2
- Darlene Kuba, District 3
- Chelsea Hunt, District 5

CITY TREASURER

- Laurie Stiver

From all of us at City Hall,

Merry Christmas, Happy Holidays,

and a Happy New Year!

