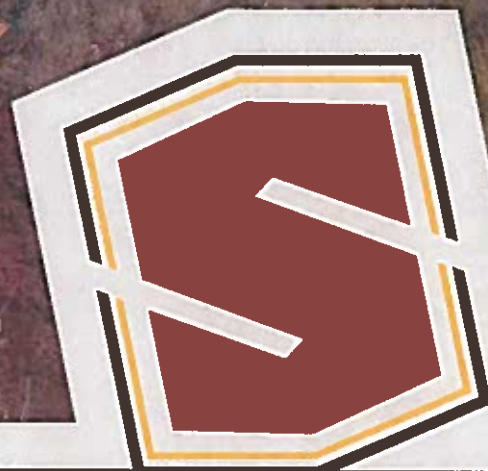


**CARBONDALE PARKS & RECREATION COMMISSION
REGULAR MEETING
WEDNESDAY, May 9th, 2018 7:00 P.M.
Carbondale Town Hall**

<u>TIME*</u>			<u>ITEM</u>	<u>DESIRED OUTCOME</u>
7:00		1.	Roll Call	
7:05		2.	Approval of April 11, 2018 Minutes	INFORMATIONAL
7:10		3.	Items from Citizens Present Not on the Agenda	INFORMATIONAL
7:20		4.	Red Hill Trails Report- Eric Proposal Review Timeline	INFORMATION DISCUSSION (Attachment A)
7:30		5.	Appointment of Alternate Parks & Recreation Position	INFORMATION DISCUSSION DECISION (Attachment B)
7:40		6.	Sub-committee report- Friends of Carbondale Parks & Recreation Aquatic Facility Advisory Committee -Next steps	INFORMATION DISCUSSION
8:30		7.	Report & Updates: Staff & Commission Members <ul style="list-style-type: none"> • Eric Brendlinger, Parks & Recreation Director • Jessi Rochel, Recreation center and Program Manager • Parks & Recreation Commissioners • Erica Sparhawk, Trustee Liaison 	INFORMATION
9:00		8.	Adjournment*	*Please note: Times are approximate

Attachment A

PROJECT: RED HILL TRAILS PROJECT
TOWN OF CARBONDALE, COLORADO
April 16th, 2018



PREPARED FOR: Eric Brendlinger
Parks & Recreation Director

PREPARED BY: David Barnett, VP Operations
Ph: 970-364-3842
david.barnett@singletracktrails.com

SINGLETRACK
TRAILS

PROJECT PROPOSAL

Red Hill Trails Project



April 16th, 2018
Eric Brendlinger
Parks & Recreation Director
Town of Carbondale
511 Colorado Avenue
Carbondale, CO 81623

Mr. Brendlinger,

Singletrack Trails is privileged to submit this proposal to provide professional services for Town of Carbondale Red Hill Trails Project. Singletrack Trails, Inc. offers comprehensive trail assessment, design, construction and maintenance services. As such, it is our opinion that by teaming with DHM Design that we can couple exceptional professional public outreach and graphic design for the success of the Red Hill Trails Project.

Why Partner with Singletrack Trails and DHM Design?

Building more smiles per mile – it's the ethos of everything Singletrack Trails does. A good trail experience engages the user, providing a fun and soul satisfying connection with the outdoors. And good trail experiences make for more vibrant communities that value recreation and the health benefits of playing outside.

Productive partnerships are where great outdoor experiences are born. Our team is fortunate to partner with government agency land managers and private property owners who value the importance of getting people outside. We provide the recreational conduit to healthier living and stronger communities; communities that see the benefit of getting residents off the couch and out the front door into nature.

Our partner on the Red Hill Trail Project, DHM Design, is skilled in outreach facilitation and graphic presentations, adding significant value to the public process. Their ability to produce compelling and descriptive graphics on the spot brings visual meaning to the discussion and keeps the planning and design process accessible and engaging for all participants. Celebrating 20 years in Carbondale this year, DHM has deep local knowledge and is directly vested in this project. They have active and collaborative relationships with the key stakeholders. DHM's history of public and recreation work in the Roaring Fork Valley, commitment to environmentally sensitive interventions, and track record of service to Carbondale and the valley through volunteerism and participation in community development and land/water advocacy non-profits uniquely positions them to support this project.

The information contained within this proposal is true and complete to the best of my knowledge.

Sincerely,

David Barnett
VP Operations, Singletrack Trails
Grand Junction, Colorado

PROJECT PROPOSAL

About Singletrack Trails



SERVICES:

- Project Management
- Trail Planning
- Trail Construction
- Trail Assessment
- Conceptual Design
- Inventory Mapping
- Volunteer and Youth Corps Coordination
- Trail System Branding and Marketing
- Maps & Signage

THE COMPANY:

The mission of Singletrack Trails is partnering with government agency land managers and private landowners to create meaningful outdoor experiences through durable shared-use trail construction, natural resource protection and volunteer education.

Driven by the desire to protect natural resources while providing better trail experiences for folks recreating outdoors, Singletrack Trails, Inc. was established in 2004. Since its founding, Singletrack Trails has been involved with the layout and construction of more than 300 miles of sustainable, shared-use trails across the United States. An active member of the Professional TrailBuilders Association, Singletrack Trails is a leader in the Rocky Mountain Region for shared-use trail planning, design, construction and the development of bicycle skills training parks.

Based in Winter Park, Colorado, Singletrack Trails credits its success to the productive partnerships developed with federal land management agencies including the Bureau of Land Management, the U.S. Forest Service and state, county and local governments. Singletrack Trails also has several beneficial partnerships with private property owners. Through these partnerships, Singletrack Trails has received numerous industry accolades and referrals, maintaining a high level of client retention.

Singletrack Trails employs a dedicated team of trail builders and specialists with decades of cumulative experience as conservation corps and volunteer crew leaders. Because of their love for trails and the outdoors, Singletrack Trails staff understands how to build memorable trail experiences. As a result, our staff creates what they would want to experience themselves; a reflection of their dedication to trails and their love for the outdoors.



ABOUT DHM DESIGN

DHM Design is a story of innovation and growth.

Established in 1975, we are an internationally recognized leader in landscape architecture, land planning, urban design and ecological planning. Our experience embraces a diverse portfolio of planning and design projects:

- National Park Service
- Resorts and Communities
- Historic and Civic Facilities
- Parks, Open Space, and Greenways
- Ecological Restoration
- Mixed-use Developments
- Urban Transportation Systems
- Private Estates and Rural Properties

DHM is employee-owned.

With a staff of 55+, we have 4 office locations:
3 in Colorado: Denver, Carbondale, Durango
1 in Bozeman, Montana.

Organized around teams in various areas of expertise, we are able to draw on each other's talents and skills to offer integrated, place-based design.

We advocate a collaborative design process, working hand-in-hand with our clients, their communities and the design team to turn ideas into reality.

Skilled in facilitation and graphic presentations, DHM adds significant value to the public process. Our ability to produce compelling and descriptive graphics on the spot brings visual meaning to the discussion and keeps the planning and design process accessible and engaging for all participants.

We are stewards of the land and that philosophy is reflected in every project we design. Our skillful integration of ecological planning and design creates practical and intuitive solutions to the frequent ecological challenges of our work.

We understand the nuances of creating real places and engaging the people who use them.

Our calling is to create balance between form and function, vision and budget, desire and need. Our holistic approach incorporates all elements, including programming, site characteristics, culture and history, engineering, drainage, and environmental factors in order to create a balanced site plan. We excel at achieving project goals while satisfying diverse interests and creating places that fit within the larger context of environment and community.

We understand the power of place and our responsibility as landscape architects to positively impact people with our designs.

Our belief in community and place-based design has allowed us to grow a portfolio of significant projects that are rooted in both social and environmental sustainability. Through our dedication to creating community, we have gained valuable experience with site master planning, transportation planning, and facilitation of public involvement in the design process.

DHM DESIGN
www.dhmdesign.com

PROJECT PROPOSAL

Red Hill Trails Project

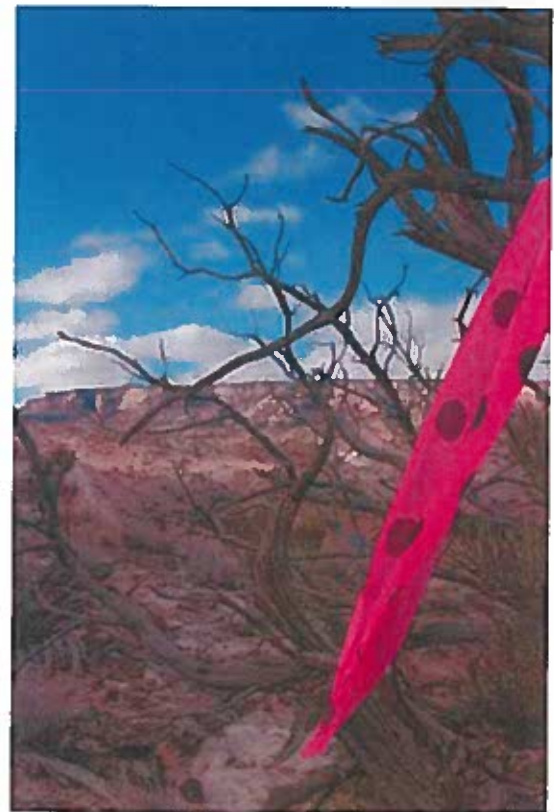


PROJECT INTRODUCTION

The development of a professionally designed trails to guide the construction of durable trails and associated recreational assets at Red Hill Special Recreation Management Area is an important opportunity that provides a well-conceived outdoor recreation facility that will highlight Carbondale and the surrounding area. Specifically, the outcomes of this project will create a safe local recreational destination, eliminating potential user conflict, while protecting natural and cultural resources.

Our team understands the complexities of working in diverse range of moisture levels, vegetation cover, slopes, and ground conditions, as well as a broad spectrum of community involvement scenarios. Additionally, representatives from both organizations were in attendance of the pre-bid walk-through. Our involvement in this project offers the following benefits:

- **Region familiarity** - We understand the culture of mountain communities and small towns. Having staff based in numerous Colorado mountain and western slope towns, we live the values and share the perspective of resident diversity and visitors. Our team has worked extensively within the area- DHM Design has staffed an office in Carbondale for 20-years, and Singletrack Trails currently has a trail crew operating in South Canyon for the City of Glenwood Springs.
- **Partner familiarity** - Experience developing recreation projects with Town of Carbondale, AVL, RFMBA, Garfield County, BLM, and Pitkin County Open Space Trails.
- **Sustainability** - We understand how to work in sensitive natural environments and with challenging terrain. Our design work is grounded in the principals of ecological understanding of a site and developing design solutions that are responsive and sustainable.
- **Understanding of the Trail Corridor** - Singletrack Trails is familiar with IMBA and BLM building standards and understands how corridors will incorporate with the associated goals of Carbondale.
- **Construction Estimation** - As a member of the Professional Trail Builders Association, Singletrack Trails has intricate cost comparison analysis knowledge, allowing Singletrack Trails to more accurately estimate construction costs for Red Hill Trails Project.



PROJECT PROPOSAL

Red Hill Trails Project



PROJECT APPROACH

Our project team has broad experience in creating trails to fit our client's specifications. Whether that entails family use hiking trails, classic singletrack, or challenging bike-focused trails, we seek to realize a client's vision. We are avid users of our local and regional trails. Team members serve on local trails councils and public lands advocacy organizations; we are passionate about trails, access to and stewardship of public lands. As professional trail builders, we collaborate closely with our clients to assure a unique and diverse product, mingling rustic hand-built ribbons of dirt with machine-constructed flow lines to optimize a property's recreation potential while highlighting and protecting its natural features.

Project Kickoff Meeting

Achieving the project vision will be best accomplished through a project kick-off meeting, including: initial detailed field assessment of the terrain and review of the Red Hill Trails Project area with stakeholders and decision makers. With the project vision and understanding of the property's opportunities and constraints, our project team can start to construct the new trail with an optimized process to maximize daily production and create a phenomenal product.



Initial Field Assessment

Our team assesses project areas from landscape-level to site-specific perspectives. Gathering available geospatial data, including topography, hydrology, soils, and natural heritage information, allows the team to frame the property from an ecological functions and values standpoint.

Detailed facility inventory, including physically hiking the project site and its relationship to adjacent trail connections, and collecting data on existing trail conditions (maintenance needs, relocation potential, physical sustainability metrics for different trail uses, and general management and restoration of natural systems and facilities), allows the team to frame the property's recreational infrastructure capacity in a manner which least impacts important ecological and cultural features while highlighting values of the Red Hill SRMA.

Field assessment activities will be completed in conjunction with the kickoff meeting and public outreach dates, ensuring team connectivity and maximizing productivity throughout the design process.

PROJECT PROPOSAL

Red Hill Trails Project



Trail Corridor Assessment & Draft Conceptual Design

After the initial site assessment, the planning team will continue work on the field design, assessing and flagging trail corridors as needed for potential site specific analysis. From there, a trail design and management document will be developed with preliminary specifications for each trail and feature, cost estimates, recommended construction methods, problem area solutions, impact avoidance measures, and confirmation of necessary permits. GPS data collected for trail tread alignment and additional project features will be submitted as GIS shapefiles, as well as GPX and KMZ files. All documents and files will be delivered via electronic methods only.

Our team will develop Trail Management Objectives (TMOs), design specifications, construction notes and maintenance plans that guide phased redevelopment of existing trail systems and/or development of new trail systems. Complementing the draft plan, the specification development planning documentation will help to better define final product and provide for quality control during development and closure operations. Additionally, this documentation will:

- Increase sustainability of the facilities and restructure maintenance needs by defining desired elements within the redeveloped trail product for all trail elements, including corridor dimensions, trail tread width, average and maximum gradient, tread roughness, and additional trail features
- Define expected outcomes for construction and long term maintenance activities
- Provide baseline project prioritization, focusing on a planned phased approach that optimizes improvements for the project while keeping existing routes open for public use
- Provide trail corridor design layouts with estimated distances, grades, intersection locations, usage, difficulty ratings and directional recommendations

Building on previous project vision and concurrent field assessment activities, our team will begin to design a high-quality pedestrian trail connection to Mushroom Rock, and alternative multi-use trail connections from the proposed future trailhead location, away from the county road, to the existing trailhead. This portion of the project will include:

- Creation of conceptual design maps and terrain visualizations for public outreach presentation designed to vet sketch concepts of alternative trail corridors, connections to adjacent SRMA areas, layouts of intersections and the inclusion of additional trailside viewpoints, resting areas and/or user passing zones.



PROJECT PROPOSAL

Red Hill Trails Project



Public Stakeholder Outreach

A public and stakeholder outreach process is important for any trail improvement project like this one; for the Red Hill project it is particularly necessary for a number of reasons, and two of those reasons stand out: It's an iconic landmark and asset for Carbondale: With direct adjacency to town and close access, Red Hill is Carbondale's recreation "back yard;" residents feel a sense of ownership and have a great deal of pride for the quality and environment of the trails. The public created this opportunity: AVL T and their partners generated a significant amount of energy in raising funds – including public donations – to secure the property for permanent, improved access to the trails. Project stakeholders and the public-at-large are engaged and motivated to see this project through.



For outreach we will leverage local media, including PSA's on KDNK and print ads in the Sopris Sun. We will also provide digital media (pdf flyers) to distribute to stakeholders and for Town staff to push out through social media. We have included the option to set up and maintain a project web site; for this project the value of a web site is in having a single place to look for announcements and draft maps. Given the short timeframe to execute the public process ahead of the first volunteer trail-building effort, we are not recommending web-based surveys or open comment periods via the web site. With our local presence we are also able to deliver and/or post flyers in Carbondale, and assume that we will rely on Town staff to distribute the digital flyers to other community organizations (Rotary, Carbondale Chamber of Commerce, etc).

For public process, our team agrees with the three meetings proposed in the RFP, and we have some ideas about how to engage the public in fun and meaningful ways. We assume that the public outreach will need to be completed before the Mushroom Rock hiking trail project in early July. We've outlined our thoughts below and look forward to working with the town and stakeholders to refine or adjust the outreach process to most effectively meet the project goals. We also recognize that to meet the project timeline – targeting a hard deadline of the early July volunteer trail construction day sponsored by RFOV – we will need to begin formatting and advertising the open houses immediately upon notice to proceed.

PROJECT PROPOSAL

Red Hill Trails Project



Open House 1: For the first meeting, we propose setting up a station on site. This meeting would likely be held in late May, and would be a combination of open-house style presentation boards and intercept survey. We could station an easy-up tent on the upper bench of the property, near the likely location of the temporary trailhead a few hundred feet above the cattle guard. The intent is to directly engage with the core demographic – the trail users – to talk about the extents of the property, likely future locations of the county road and parking, and discuss initial alternatives for trail number and alignment(s).

Open House 2: We propose the second meeting coincide with the June First Friday. An option is to use DHM's office on the 300 block of Main Street as a gallery for an open house, with information advertising the location at the 4th Street Plaza. This effort would target the public-at-large, and trail users not on site during the first meeting.

Open House 3: Also in early June we would hold an open house for the Hispanic and Latino population. We recognize that for this effort to be successful, we must be targeted and thoughtful. We have contacted the Valley Settlement Project and they are excited to work with us to determine the right outreach methods, time, location, and format for this open house. Upon notice to proceed we will schedule a meeting with representatives of the Valley Settlement Project and Town staff to initiate this process.

In addition to the three open house meetings, we have included attendance at the morning coffee station on 4th and Main each day of Bonedale Bike Week. With DHM's office half a block away, we can easily provide staff from 7:30 to 8:15 each morning of that event to talk to members of the public. We can also provide collateral for the other activities of Bike Week and are happy to discuss how best to piggyback on the energy of that week-long event. At the completion of the open house series we will develop a memo and supporting graphics summarizing the outreach and public feedback. This will be presented to Town staff and the stakeholders for evaluation and final direction for the trails plan.

Trail Design Specification & Documentation

After we have received direction from the Town regarding the preferred trail alignment(s) we will develop the implementation documentation for the trails. This documentation will include GIS mapping of the trail alignment(s), typical detailing of trail sections, and specific/specialty details for unique trail circumstances. This package of documents will be used to verify the final design, seek recommendation for approval from Town boards, and ultimately approval by the Trustees. Per the information provided during the pre-proposal meeting we assume that the Trustees will accept the recommendation of the Parks and Recreation Commission and of the Bike, Pedestrian, and Trails Commission.

Town of Carbondale Public Process Strategy

Awareness | Engagement | Feedback

We have successfully facilitated public meetings ranging from large to small for mountain towns across the West. We will work with the Town of Carbondale, community and stakeholders to develop creative strategies to reach, understand, and incorporate their wishes for the Red Hill Trails Project.

Setting the Stage for Dialog

With offices in Carbondale, Denver and Durango, DHM Design serves mountain communities and the specific needs of their residents from a deep understanding of their perspectives, expectations and measures of success. Mountain communities tend to be highly engaged and informed about potential development in their area. They care deeply and want their concerns to be understood as projects move through the decision-making process. Our job is to let them know we are listening and guide the conversations toward a balance of priorities that achieve multiple goals.

What does the Carbondale Community Care About?

As a small mountain town that offers hiking, biking, recreation, wildlife experiences, and scenic enjoyments - the community wants to protect and celebrate the Red Hill Trails Project as multiuse property that brings the community together and is inviting to tourist that connects people to each other and to the natural environment. We understand from initial conversations that people are interested in creating momentum for the project - not just a plan that sits on the shelf. Our team is dedicated to working with the Town, stakeholders and individual community members to make sure we identify A) who should be involved in the public process and B) how best to engage them. The diagram below shows a preliminary look at the organizations in and around Carbondale that we will review together before the outreach process begins:

Potential User Groups

- Hikers
- Bikers
- Runners
- Horseback Riders
- Dog Lovers
- Local Adjacent Businesses



Build Awareness

Engage the Public

Creative Outreach

People are busy. Engagement activities are more effective if they are done where the community members themselves reside. We could possibly use the local recreation center, active summer events and other town-focused forums to get the word out about the project and ways to be involved. There are a variety of tools we recommend for this project, such as:

Pop Up Outreach activities reach out to the community in non-conventional ways and establish a strong connection between the "everyday" and the Red Hill Trails Project. The goal is to foster a dialogue in the community and stakeholders in a format that is informal, fun and engaging. These kinds of innovative outreach efforts are much more likely to reach underserved community members and get a broad spectrum of ideas onto the drawing board.

Chalkboards located at key spots in the community with questions intended to spark a dialogue.



Intercept Surveys gather meaningful input from a broader array of residents outside of the traditional workshop process. We can work with you to design questionnaires to solicit feedback and target key locations for survey boxes, QR codes or staffed booths as the budget allows.

Build Awareness

We will work hand in hand with the Town to define the community and engage the citizens, interest groups, merchants, land owners and stakeholders to let them know this plan is in the works and how to get involved.

- Postcards* / direct mail (Touch Campaign)
- Flyers* at local events
- Posters* at community gathering points
- Municipal newsletters
- Include flyers* in utility bills
- Articles in local papers

**Artwork prepared by DHM for Town to copy and distribute*

Thinking Beyond Open Houses

Event-based Participation encourages attendance from all walks of life in the planning process, especially by families. We will work with the Town to design events that gather knowledge and perspectives while also presenting enjoyable activities such as entertainment, food, and activities. For example, in the Town of Silverthorne, we created local Ice Cream Social nights, where for the cost of a few gallons of ice cream, we were able to create a forum to chat with families about their goals and vision for their neighborhood park.



"Walkshops" are moving conversations, educated and stimulated by looking around. Typically on foot or bike, walkshops allow community members and planners to better understand the project together and to discuss site opportunities. We can create these to be low-tech and ADA accessible, using presentation boards and viewing stations for gathering feedback at a more personal level.

Take the Discussion Online

Project Websites can be specifically designed to engage the public, post the latest information, updates to the project and distribute a calendar of events. They create possibilities to receive input from the community beyond the typical public meetings and allows for discussions to take place in a secure and controlled environment. We can integrate **surveys** online to capture feedback beyond the public meeting forums.



Social Media

The project team will provide content for the Town to post to its social media channels (i.e., Facebook and Twitter) to provide announcements regarding pop-up events and public forums.

Incorporate Feedback

Stakeholder Meetings

The level of participation varies for each project, but having early involvement in the process paves the way for a successful outcome. Working in collaboration with stakeholders and the Town we are able to offer concept alternatives, accept commentary, anticipate controversy and build a final plan that meets the goals of the community. The most important part about this phase of the public process is to make sure the public has an opportunity to speak, and that they know we have heard what they said. To that end, we employ a tiered system of feedback to open the channels of communication for everybody and ensure an inclusive process. Working with the Town staff, we synthesize the data from public meetings and comment opportunities. Through a careful analysis, we look for trends, develop a list of key issues and organize the feedback into workable solutions.



Incorporating Feedback

We review public comments, analyze and look for trends to develop a list of key issues and organize the feedback into workable solutions. We publicize the results so the community knows what we heard and that we are listening. This is done through the use of a project web site and a report out at subsequent meetings that illustrate how we will incorporate specific community feedback into the plan. The Town's public relations and the media can also help to inspire excitement and promote opportunities of the project.



True consensus is often difficult to achieve but the goal of a successful public involvement process is to create informed consent so that each person involved feels they are a valued part of the process.

PROJECT PROPOSAL

Our Construction Process



NEPA PROCESS

Our team understands that we may need to proceed with a NEPA process for planning associated with the trails improvements. Based on our understanding of the work that may trigger this effort we have developed a series of assumptions for the possible NEPA process. The scope of work outlined below will be accomplished by DHM in-house staff and performed out of our Carbondale office, except for the archeological review and documentation (if required by the BLM); our team has partnerships with experts in this skill set and will submit that team member for town review if that work is necessary. As a part of the NEPA scope of work we will meet with the BLM, with Town staff, to evaluate the project requirements. We will be able to confirm or revise our approach at that time. We have used a similar process for a recent regional trail project in Eagle County (ECOS Trail System extension). We assume that the size and scope is appropriate for a Categorical Exclusion (Cat-Ex) and that a full EA / EIS will not be necessary. As a part of the Categorical Exclusion process we have included scope allowances for: literature/desktop review and analysis; botanical/T&E field analysis; archaeological field analysis and reporting. This information will be formatted and published - with required text, mapping, and supporting documentation - for submittal to the BLM.



WAYFINDING AND INTERPRETIVE SIGNAGE

Per the pre-proposal site visit, the long-term intent is to improve the county road and parking at the bottom of the hill, and that this work will also include wayfinding signage, interpretive information, and maps. We have included as an optional service the initial graphic design of the sign families for Red Hill. This package of products will set the design standards for future trail signage, and may also be used for wayfinding along existing trails and at a temporary trailhead. We assume that final sign design will be developed after the trails plan is complete and will be guided by this signage "family" concept package.

PROJECT PROPOSAL

Our Construction Process



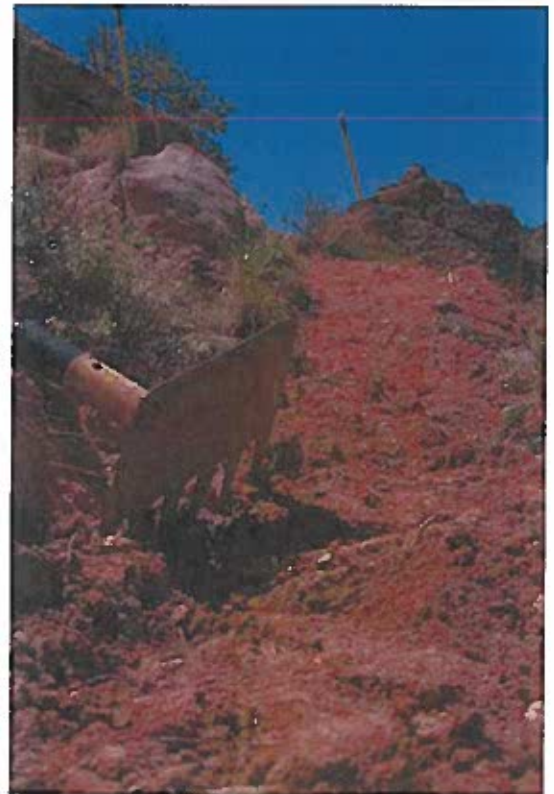
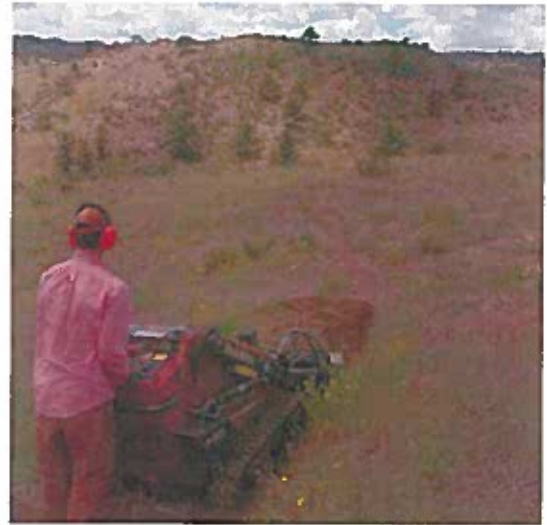
CONSTRUCTION PROCESS

Trails are an essential facility for the management of recreationists and protection of natural resources. Durable pathways that highlight the native landscape provide visitors a minimally impacting and enjoyable recreation experience. Unfortunately, the vast majority of trails have not met sustainability benchmarks, which led Greg Mazu to found Singletrack Trails, Inc. Improving the outdoor recreation experiences while minimizing impacts to the land is constant in the company's trail construction resume.

Singletrack Trails is known for their "light touch" on the land by employing the minimum tool rule (the least impactful machine for the job at hand). While larger machinery may move more soil at a faster rate, it can also create substantial fill slopes that impact trailside vegetation. Our construction process was developed using smaller machinery and hand tools, to efficiently construct, while fully compacting and stabilizing the day's work before moving forward; this process results in a natural surface trail that is not subject to erosion during and immediately following the construction process.

Singletrack Trails is adamant about retaining the minimal construction footprint. Minimally impacting trails are created through a stepwise progression during the construction phase. Essential facets of this construction process that ensure long-term sustainability include:

- Retention of seed-bearing organic matter for re-stabilization
- Micro-adjustments of trail alignments to avoid trees and roots
- Management of natural drainage patterns with rolling contour construction
- Utilization of natural, on-site rock materials for hardening moist areas while maintaining natural soil chemistry



PROJECT PROPOSAL

Our Construction Process

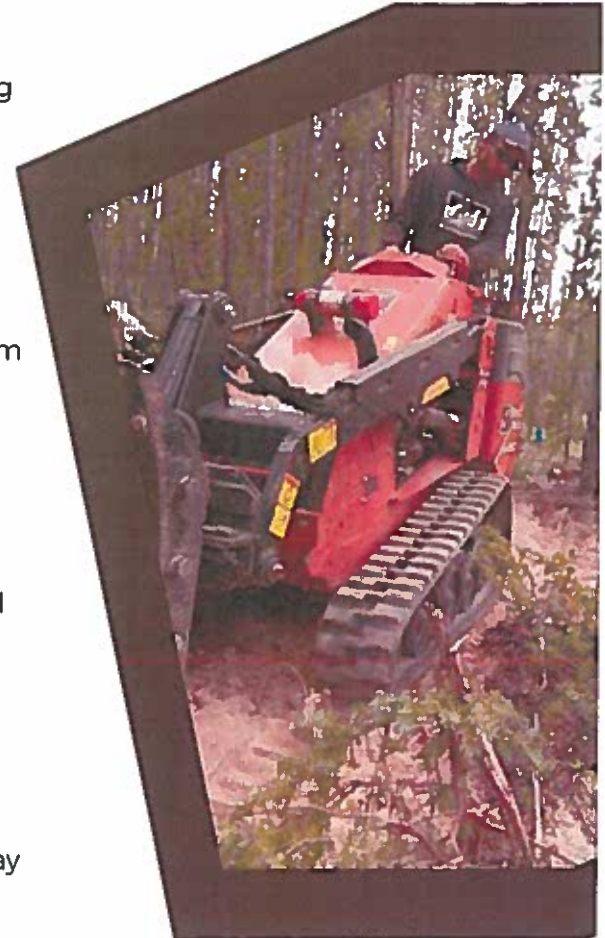


Contractor Equipment

Singletrack Trails proposes to use the following machines during the construction of this trail project:

- **Kubota U-17 Mini-excavator**
- **Ditch Witch SK650/850 Compact Track Loader**
- **Canycom Compact Rubber Track Equipment Carrier**

Singletrack Trails owns all machines listed by specific model number and will provide experienced operators with a minimum of 250 machine hours of operation.



BEST MANAGEMENT PRACTICES

Singletrack Trails will adhere here to the following best management practices. Upon request, Singletrack Trails will provide our Health and Safety Plan, Emergency procedures, and other related documents.

Site Access

- The job site will be accessed via vehicle or hiking through approved access points
- Vehicles will be parked in approved locations, not in the way of existing trail traffic.

Mechanized Equipment Impacts

All track marks will be raked smooth. Affected area will be finished to have a nature shape, e.g., spoil piles rounded, smoothed and cleared of significant brush, blade edges blended. Scaring of trees is to be avoided. Separate access routes may only be created and used with prior written permission. Any approved access route will be retired and reclaimed back to its original condition upon project.

PROJECT PROPOSAL

Our Construction Process



Fire Prevention

Fire prevention is an important part of protecting employees, company assets, and the project site. Fire hazards must be controlled to prevent unsafe conditions. Once a potential hazard is recognized, it must be eliminated or controlled in a timely manner. The following fire prevention requirements must be met for each site:

- A conspicuously located, 5lb fire extinguisher for everywhere more than 5-gallons of flammable liquids or gas are stored
- Generators and internal combustion engines located away from combustibile materials
- Site free from accumulation of combustibile materials or weeds
- No obstructions or combustibile materials piled in the exits
- No more than 25-gallons of combustibile liquids stored on site
- Fire extinguishers located with each machine
- Fire extinguishers in the immediate vicinity where welding, cutting or heating is being done
- Spark arrestor installed on each machine



Machine Refueling

Machine refueling will be made with portable 5-gallon fuel containers that will be transported to the worksite on as-needed-basis, as well as:

- No more than 5 gallons per machine will be stored on site in between fueling
- Fuel will be contained in containers free of leaks and punctures
- Fire extinguishers will be located in the immediate vicinity
- Fuel spill kits will be located in the immediate vicinity

PROJECT PROPOSAL

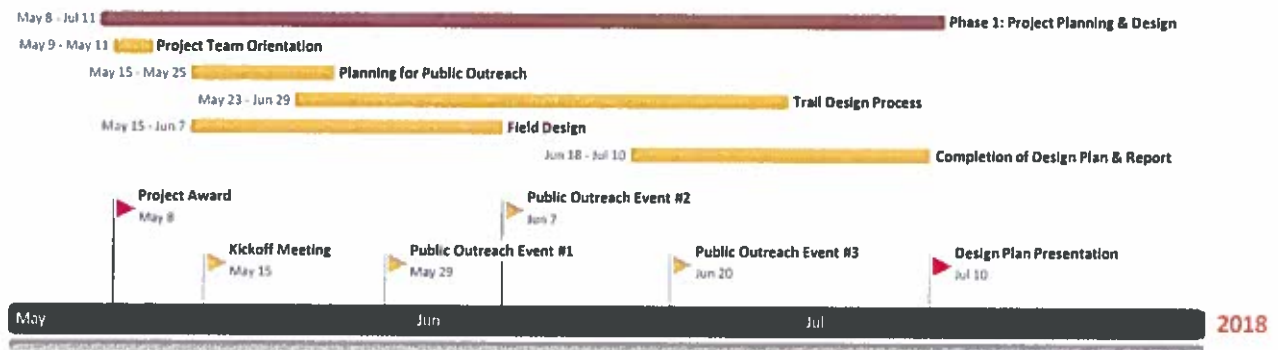
Red Hill Trails Project



PROJECT TIMELINE

Our team understands that it is the intent of Town of Carbondale to initially complete community outreach and the design phase of the project. Upon the approval of the design plan by the Board of Trustees, Roaring Fork Outdoor Volunteers will conduct the construction of the Mushroom Rock pedestrian trail connection through previously scheduled event dates provided with the RFP.

After necessary permits with both the Town of Carbondale and BLM have been obtained, our team can then create a timeline for the construction, rerouting, and associated closures of the Blue Ribbon and Three Gulch trails; a timeline that will be mutually beneficial to all parties while balancing team efficiency. The construction phase of the project will be completed using a combination of machines and hand work to create trails that each has a distinct style. To complete the anticipated work load, Singletrack Trails will plan to schedule one crew, totaling four crew members.



PROJECT COST ESTIMATE

The following cost estimate for the Red Hill Trails Project covers community outreach and design specification portions of the project scope only. After the trail design specification has been completed and approved, an accurate cost for trail construction can be delivered. At this time it is anticipated that construction costs will be in the range of \$5 to \$8 per linear foot.

PROJECT PROPOSAL

Red Hill Trails Project



PROJECT COST ESTIMATE

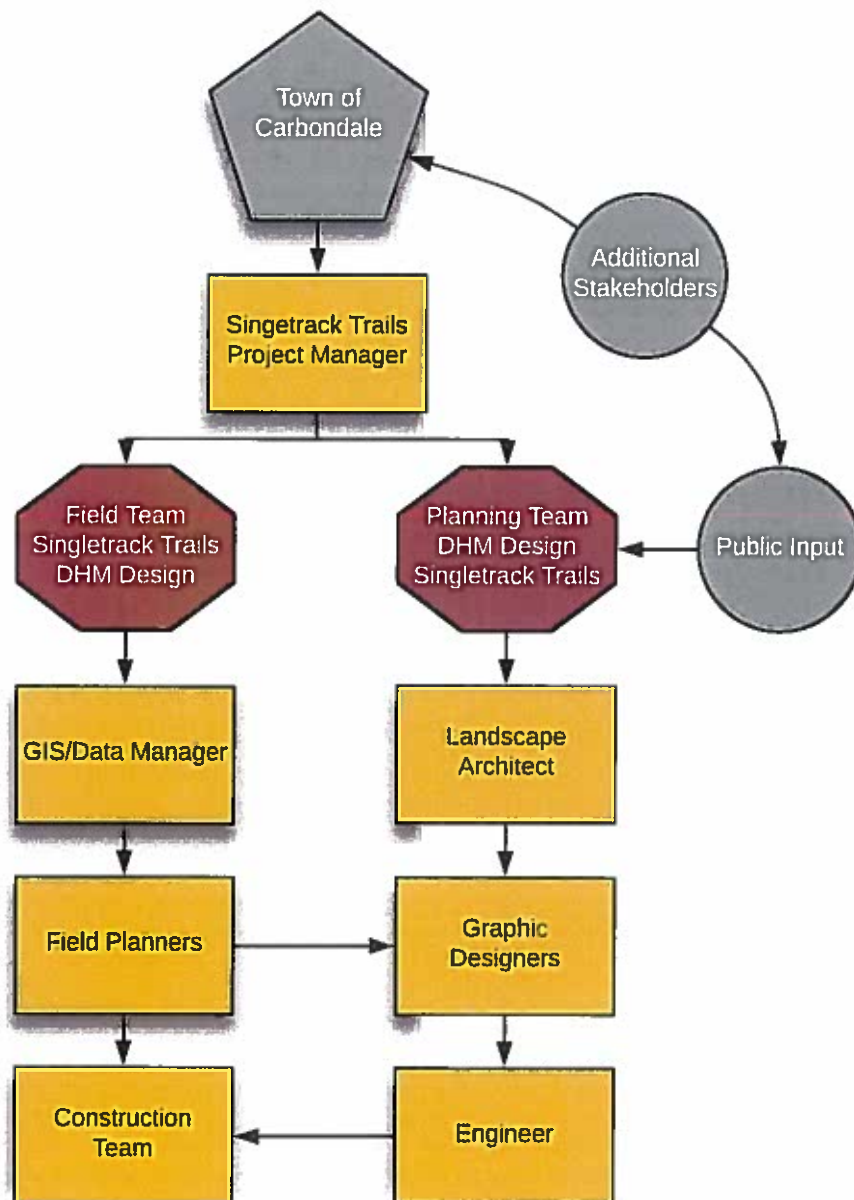
Red Hill Trails Development	DHM Design			Singletrack Trails				HOURS	SUB TOTAL FEE
	Principal/Project Manager/Ecology Principal	Associate Landscape Architect	Graphic Designer	Project Manager	GIS Data Manager	Field Layout Staff	Engineer		
Hourly Rates	\$170	\$105	\$80	\$125	\$95	\$65	\$95		
Proposed Scope and Professional Fees									
Phase 1: Design and Public Process									
Kick-off Meeting and site visit/detailed site evaluation	6	4		2	4			16	
Review of existing documents, set up of base maps, analysis of field evaluation	4	16			20	100		140	
Trail Flagging									
Preparation of products for open house series - character graphics, analysis map of area, alternate alignments with pros/cons, trail feature imagery	8	48			40			96	
Staff/stakeholder meet pre-open house series	2	2		2	2			8	
Public Open House Series (total of three); allowance for staffing at Bonedale Bike Week, logistics, Valley Settlement coordination	12	24		8	16			60	
Open House findings summary and preferred trails plan. Draft technical documents	4	40		4					
Review of draft plan with Town staff and stakeholders	2	4		4					
Edits to final plan	4	24			20				
Present final plan to stakeholders, commissions, staff	4	8		4	8			24	
Trustee approval of final plans	2								
Hours Subtotal	48	170	0	24	110	100	0	344	
Cost Subtotal	\$ 8,160.00	\$ 17,850.00	\$ -	\$ 3,000.00	\$ 10,450.00	\$ 6,500.00	\$ -		\$45,960.00
Phase 2: Plan revisions, draft technical documents									
Site visits during construction (allowance)	4	16						20	
Final review of trails installation / closeout with town	4	8						12	
								0	
								0	
Hours Subtotal	8	24	0	0	0	0	0	32	
Cost Subtotal	\$ 1,360.00	\$ 2,520.00	\$ -	\$ -	\$ -	\$ -	\$ -		\$3,880.00
PROJECT LABOR TOTAL	56	194	0	24	110	100	0	376	\$ 49,840.00
Team Expenses									
Travel expenses allowance									\$1,500.00
Printing allowance									\$750.00
Expenses Total									\$2,250.00
Optional Services									
NEPA Categorical Exclusion: preparation of documentation	16	80						96	\$11,120.00
Management of submittal of NEPA application (if not directly managed by Town Staff)	1	16						17	\$1,850.00
Project Web Site Set-up, Uploading Files and Nominal Maintenance. Note: does not include community feedback via web interface (e.g. surveys, download and distillation of comments, etc). Could direct comments to Town staff if they want that		8							\$840.00
Wayfinding/Interpretive signage concept / sign family design. Services include site plan diagram identifying proposed locations for wayfinding interpretive signage, concept draft sign artwork template, conceptual sign detail sketch(es), revision to sign family design, final conceptual sign package			40						\$3,200.00
Subtotal	17	104	40	0	0	0	0	113	\$17,010.00

PROJECT PROPOSAL

Red Hill Trails Project



PROJECT ORGANIZATIONAL CHART



PROJECT PROPOSAL

Red Hill Trails Project



APPENDIX A

Warranty

The Services shall be performed in accordance with generally accepted industry principles and practices, consistent with the level of care and skill ordinarily practiced by reputable members of the profession providing similar services under similar circumstances. Singletrack Trails warrants that: (i) for a period of one year commencing upon Client's Acceptance (the "Warranty Period"), the trails furnished under this Agreement shall (a) be free from material defects and (b) shall operate and conform to specifications, or other descriptions that the Parties have agreed to in writing, provided, however, that the forgoing warranty shall not apply to damage caused by erosion or excessive use. If a breach of warranty should occur during the respective warranty period, Singletrack Trails shall repair the trails to conform to the agreed upon Specifications. The foregoing shall be Client's exclusive remedy and Foster's entire liability for breach of this warranty. EXCEPT AS SET FORTH HEREIN, SINGLETRACK TRAILS MAKES NO OTHER REPRESENTATION, GUARANTEE, OR WARRANTY, EXPRESS OR IMPLIED, IN FACT OR BY LAW, WHETHER OF MERCHANTABILITY, FITNESS FOR ANY PARTICULAR PURPOSE OR OTHERWISE.

Red Hill Trails Project.

The undersigned hereby affirms that (1) he/she is a duly authorized agent of the Contractor, (2) he/she has read all terms and conditions and technical specifications which were made available in conjunction with this solicitation and fully understands and accepts them unless specific variations have been expressly listed in his/her offer, (3) that the offer is being submitted on behalf of the Contractor in accordance with any terms and conditions set forth in this document, and (4) that the Contractor will accept any awards made to it as a result of the offer submitted herein until July 13, 2018. Please return this with your proposal.

PRINT OR TYPE YOUR INFORMATION

Name of Company: Singletrack Trails, Inc. Fax: _____

Address: PO Box 1888 City/State: Fraser, CO Zip: 80442

Contact Person: David Barnett Title: V.P. Operations Phone: (970) 364-3842

Authorized Representative's Signature: David Barnett Phone: _____

Date: 04/16/2018

Email Address: david.barnett@singletracktrails.com

PROJECT PROPOSAL

Red Hill Trails Project



APPENDIX B

SINGLETRACK TRAILS, INC.

Team Resumes

Relative Project Work

DHM DESIGN

Team Resumes

Services

Relative Project Work

GREG MAZU

Chief Encouragement Officer, Project Management



EXPERIENCE:

Singletrack Trails, 2004 to Present
Owner/President

Founded and established Singletrack Trails, Inc. in 2004, driven by a desire to protect natural resources, provide better trail experiences, and encourage people to use trails and exercise more regularly. Managed and led the company through a period of growth across multiple service sectors, employing his extensive experience in:

- Trail system master planning and construction logistics
- Field surveying and GPS/GIS mapping of trail corridors
- Trail assessment and maintenance planning
- Management of large groups of volunteers and service corps
- Creation of marketing materials for distribution at conferences



Lory State Park, Fort Collins, CO, 2003-2004

Trail Coordinator

- Managed the construction schedule and converted hiking-only trails to a shared-use, non-motorized standard
- Completed a revision of the park's trail master plan
- Coordinated the construction process of the Corral Center Mountain Bike Park, the first such endeavor in a state park
- Supervised Larimer County Youth Conservation Corps and AmeriCorps National Civilian Conservation Corps crews during construction project

PERSONAL SUMMARY:

Greg Mazu has seen trails from all angles. After years of hiking and biking he became a dedicated volunteer that organized trail stewardship events and actively sought out training to enhance his effectiveness in that role. Turning his passion into a profession, as the trails coordinator for Lory State Park near Fort Collins, CO.

PROFESSIONAL ACTIVITIES:

Professional Trailbuilders Association, Active member of the association since 2008, providing assistance on committees in marketing product and strategy development.

Following these significant improvements to both the trails and volunteer stewardship program at the park, he moved along to found Singletrack Trails, where has successfully taken on the management of large scale, natural surface trail construction projects across the United States of America. He is experienced with local conditions across the country, as Mazu has ridden or hiked in 33 different states.

PROFESSIONAL PRESENTATIONS:

- **"GPS and GIS Tools and Techniques for Trailbuilders"**
Professional TrailBuilders Association 2012
- **"GPS and GIS Tools and Techniques for Design, Assessment and Management"** Professional TrailBuilders Association 2013
- **"Collaborating with Youth Corps and Agencies"**
Professional TrailBuilders Association 2016
- **"Stimulus of Trails"**
Professional TrailBuilders Association 2017

DAVID BARNETT

V.P. Operations, Project Manager, Geologist & GIS Guru



EDUCATION & CERTIFICATIONS:

Professional GIS Certificate - Metropolitan State University, Denver, Colo
Bachelor of Science, Geology - Fort Lewis College, Durango, Colo
Certified Professional Geologist (CPG #11924) - AIPG
CompTia Security+ - Vendor-neutral IT security administration
UAS Remote Pilot 3942211 - Federal Aviation Administration

PROFESSIONAL EXPERIENCE:

Singletrack trails - V.P. Operations & GIS Analyst, 2017 to Present

Recreational trail planning and design. Using available data collected from either public sources or fieldwork, create GIS projects, spatial databases, and terrain models for recreational trail design and construction. Customize GPS data collectors for spatial inventory and assessment projects.

MtnCarto - GIS Analyst & Geologist, 2001 to Present

Provide adaptive, effective and focused geospatial micro-service integrations and solutions to include business process analysis, geographic information science data compilation and analysis, project change management, front-end web mapping application development, technical illustration, process documentation and support. Technical components have included: field data collection, terrain and geologic modeling, UAV aerial surveys, database management, data compilation, surface and subsurface geologic mapping and mineral assessment research.

VOLUNTEER EXPERIENCE:

Colorado Plateau Mountain Bike Trail Association (COPMOBA)

Crew leader, trail designer, GIS data manager, and field mapper

Volunteers for Outdoor Colorado (VOC)

Crew Leader and volunteer trail builder

RECENT PROJECTS:

S-Bar Ranch, Idaho - Conceptual Trail Design

GIS conceptual design using available terrain, hydrology and geology data; field flagging and ground proofing of 14-miles of trail corridor.

Silver Cliff, Colorado - UAV Aerial Mapping and Terrain Modeling

Conducted UAV flight missions to collect aerial imagery for 380-acre project; generated digital terrain model for the creation of topography and orthophotomosaic.

SUMMARY:

Over 25 years applied experience within information technology, geographic information science and geology, contributing to successful projects through results driven process improvement, change management, implementation of modern technologies, strong communication skills, professional customer support and ongoing career development. Core values which permeate my work include quality, dependability, focus, reliability, ethics, morals, teamwork and respect.

PROFESSIONAL AFFILIATIONS:

American Institute of Professional Geologists (AIPG)

Geological Society of America

Grand Junction Geological Society

GIS Colorado

BILL TAYLOR

Project Engineer



EDUCATION & CERTIFICATIONS:

BS, Civil Engineering - Colorado State University, Fort Collins, CO
Construction Drafting Technology - Albuquerque Technical-Vocational Inst.
Professional Engineer Licensure - Colorado 32205
Association of State Floodplain Managers (ASFPM) CFM US-04-01232
Certified Storm Water Management Plan (SWMP) Administrator #00093

PROFESSIONAL EXPERIENCE:

Singletrack Trails - Grand Junction, Colorado 2018 -

President, Project Engineer and Manager

- Project manager and lead design engineer for trail, transportation, site development and stormwater drainage projects.

SGM, Inc. - Grand Junction, Colorado 2015 - 2018

Senior Engineer

- Project manager and lead design engineer for transportation, site development and stormwater drainage projects.
- Managed complex transportation projects involving multiple federal agencies, CDOT and local stakeholders.
- Coordinated projects for NEPA processes and permitting with BLM, CDOT and FHWA in alignments containing threatened and endangered species (T&E) critical habitat.
- Performed floodplain modeling and scour analysis for bridge structures and transportation facilities.

Mesa County Public Works, Mesa County, CO 2003 - 2015

Senior Engineer

RECENT TRAIL DESIGN PROJECTS:

As a Mesa County Trails Engineer, Bill was involved with planning, design and construction for several sections of the Colorado Riverfront Trail:

Kokopelli Section 2016 - 2018 Fruita, CO. Bill served as the Project Manager, trail designer, and environmental and agency permitting coordinator for this 2.15 miles of trail.

Nature Center & Ron & Kathleen Arnett Section Sections 2008 - 2011

Clifton, CO. Provided design support of the trail east of SH 141, plus additional trail connection to the river bridge on Clifton Sanitation District property.

SUMMARY:

As a civil engineer consultant bringing over 27 years of experience in roadway, highway, hydrological, hydraulics and municipal infrastructure improvements, Bill has been exposed to a wide range of projects involving a variety of engineering disciplines. This experience includes design of pedestrian and bicycle transportation facilities, and floodplain analysis and stormwater system design. His most recent experience includes: Kokopelli Section of the Colorado Riverfront Trail, the Fruita mountain bike trails, Red Canyon and Limekiln Pedestrian Bridge Projects.

PROFESSIONAL AFFILIATIONS:

American Society of Civil Engineers (ASCE)

Colorado Association of Floodplain Managers (CASFM)

Association of State Floodplain Managers (ASFPM)

JAMES FLATTEN

Chief Trail Crew Supervisor



EXPERIENCE:

Singletrack Trails

2007 to Present

Responsible for ensuring safe and timely project implementation in accordance with company policies and contract scope of work

- Worked closely with clients to understand project goals
- Managed the day-to-day operations of the crew
- Attended project meetings with client and assisting in the implementation of meeting objectives
- Ensured daily production meet contract specifications

PROJECT EXPERIENCE:

Powderhorn Ski Area Bike Park Construction, 2015

- Chief field construction designer for the first lift serve bike trails
- Managed construction implementation

Whiterock Conservancy Trail System, 2014-2015

- Lead site supervisor to implement 20 miles of new trail
- Coordinated work flow with in-house crews and subcontractors

Glendo State Park Trail System Construction, 2010-2014

- Coordinated crews during multi-year project
- Project leveraged machine and hand crews

Warner Mountain Bike Trail System, 2013

- Contributed to final trail design on multiple trail segments
- Lead crew supervisor during project implementation

Granby Ranch Mountain Bike Portfolio, 2012-2015

- Chief machine operator for bike park trail segments
- Successfully implemented well rounded cross country trail segments

Fruita-Grand Junction Mountain Bike Portfolio, 2007-2013

- Lead trail crew member during project implementation
- Chief jump creator for Lunch Loop Bike Park

PERSONAL SUMMARY

James Flatten joined the Singletrack Trails crew in 2007. As the Chief Trail Supervisor, he is now responsible to ensure that projects are completed on time and exceed expectations. His career as a dirt shaper was packed into prominence as the Lead Course Designer and Chief Builder for the Ranchstyle Mountain Bike Festival near Grand Junction, Colorado. The event under James' tutelage of sculpting became a Silver Level Freeride Mountain Bike Tour event in 2010.

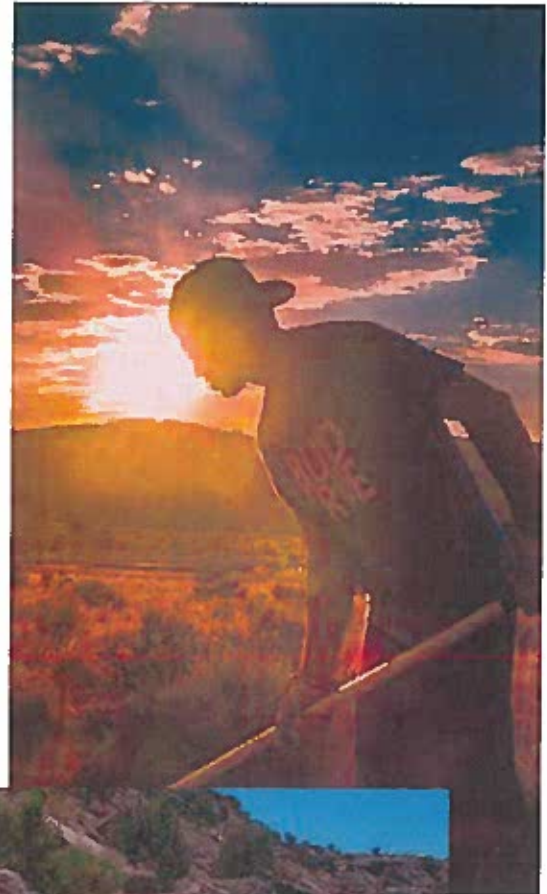
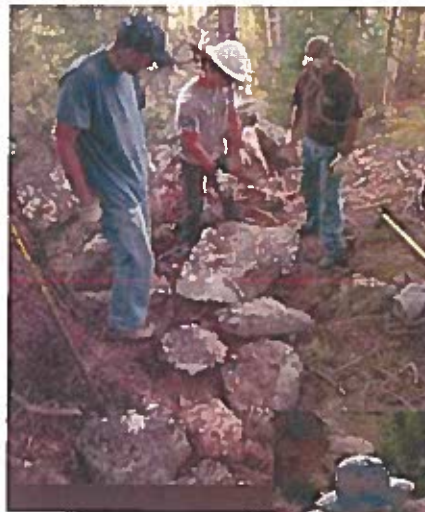
Knowing how to build competition courses for the 1% of mountain bikers and extrapolating that knowledge to build dirt jumps, pump tracks, and rhythm trails for the 95% is James' specialty. He has been adding the "free" to freeride trails since 2002. With James on the project in charge of dirt shaping, everyone will be happy.

OUR CREW



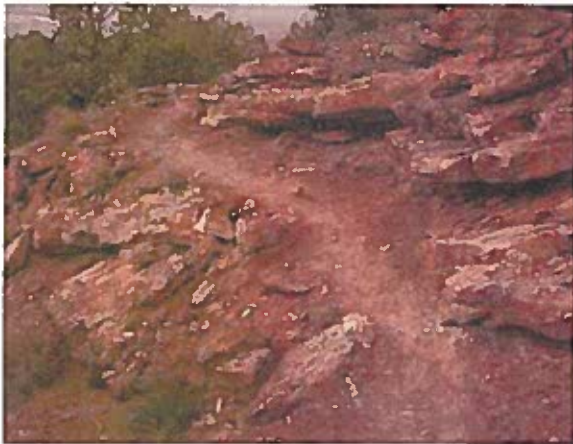
THE SINGLETRACK TRAILS CREW

The Singletrack Trails construction crew is composed of passionate trail users and dedicated mountain bikers. The crew works for Singletrack Trails in order to feed their addiction to providing smiles to the trail users that come down the path later on. Many of the crew members began their experience in trail work as members of conservation corps and volunteers. The crew members take pride in the work they leave behind and always strive to create a desirable trail experience.



PROJECT REFERENCE

GRAND JUNCTION • FRUITA, COLORADO



PROJECT BRIEF: Grand Junction and Fruita, Colorado

Dates:

2007 - Present

References:

Jen Taylor - Former COPMOBA Board Member
(970) 250-9682 | jen.taylor@mountainkhakis.com

Ture Nycum - Parks & Recreation Director | City of Fruita
(970) 858-0360 | tnycum@fruita.org

Mike Jones - BLM Recreation Planner
(970) 244-3000 | mdjones@blm.gov

HIGHLIGHTS:

Advocacy Outreach, Volunteer Support, and BLM project coordination

Tabeguache - Lunch Loops Trails

- High Noon
- Pre-Nup
- Gunny Loop
- Gunconnector
- Ali-Ali Loop
- Raven's Ridge
- Free Lunch
- Lunch Line
- Pucker Up

North Fruita Desert - 18 Road Trails

- PBR
- Mo' Joes
- Zip Off

McInnis Canyons - Mack Ridge Trails

- Hawkeye
- Wrangler
- Steve's Loop
- Lower Moore Fun

Singletrack Trails has been fortunate to have worked in the Grand Valley of Colorado since 2007. The work in the Grand Valley is the foundation of the growth of Singletrack Trails. The Grand Valley trails have served as a model for partnership, advocacy and superior riding experiences, drawing national and international users while creating amazing close-in daily rides for local residents.

Working for Bicycle Colorado as the prime trail building contractor, Singletrack Trails coordinated with the Bureau of Land Management (BLM) and the Colorado Plateau Mountain Bike Trail Association (COPMOBA) to implement the shared-use, non-motorized portions of the Bangs Canyon Trail Plan, better known as the Lunch Loops. Singletrack Trails planned and implemented with local riders the first official freeride trail on BLM land in the country. In addition, Singletrack Trails provided combined staff labor and volunteer support to complete 15 miles of trail re-routes in the Lunch Loop area.

Singletrack Trails was a key factor in the construction of two bicycle skill parks in the City of Grand Junction and the City of Fruita. Each two acre park features dirt jumps, a pumptrack, and skill features to challenge any bicycle rider.

Partnering with the City of Fruita and COPMOBA, Singletrack Trails planned and assisted the first trail expansion of the North Fruita Desert Mountain Bike Area, 18 Road. The six miles of flagging were approved by the BLM and implemented by volunteers from COPMOBA and staff of Singletrack Trails paid for with funding from the City of Fruita. The crown jewel of this part of the project was PBR Trail, a linear 2 mile pumptrack that was completed in time for the 2012 Fruita Fat Tire Festival.

PROJECT REFERENCE

STAUNTON STATE PARK, COLORADO



PROJECT BRIEF: Staunton State Park, Colorado

Dates:

2016

References:

Stuart Watada - Colorado Parks and Wildlife, Northeast Region
(303) 291-7178 | Stuart.watada@state.co.us

PROJECT HIGHLIGHTS:

Staunton State Park is one of the most recent Colorado State Parks to come on line for public use. Located near Conifer, CO, this state park will provide trail based recreation and camping for park users. In combination with the Buffalo Creek trail system in nearby Pine, CO, Staunton State Park provides a mini-regional trail destination for the Denver Front Range.

Working with Colorado Parks and Wildlife, Singletrack Trails and Grandview Landscaping of Golden, CO completed 8 miles of new trail construction. In addition to the trail construction, the Phase 2 contract included the installation of two pre-fabricated glue-lam bridges and 25 walk-in campsites with tent pads, bear boxes, and picnic tables.

The underlying intent of the Phase 2 Trail Construction project was to provide trail users with better trail connectivity, more singletrack trail (less than 48" wide) opportunities, and the development of loop opportunities in remote areas of the park. The Phase 2 project delivered a completed project that was met with immediate accolades from Front Range trail users and in increase in daily users.

- 8-miles of new trail constructed
- 2 pre-fabricated glue laminated bridges installed
- 25 walk-in campsites with amenities created

PROJECT REFERENCE

CITY OF COLORADO SPRINGS



PROJECT BRIEF: Colorado Springs

Dates:

2015 - Present

References:

David Deitmeyer - Colorado Springs Parks, Recreation, and Cultural Services
719-585-6533 | ddeitmeyer@springsgov.com

The City of Colorado Springs has a variety of urban and forest trails within their system, many which were established from social trails or completed prior to establishment of the modern trail design and construction methods. The City contracted with Singletrack Trails to analyze existing social trails and other damaged routes, and to develop maintainable new corridor alignments and trail routes. Improvements to these trails will help to create a better user experience and decrease overall maintenance needs.

More recently, Singletrack Trails has been contracted to build new trail in conjunction with the City of Colorado Springs and Medicine Wheel Trail Advocates on the southern slopes of Pikes Peak. This trail will be a non-motorized multi-use trail for advanced to intermediate mountain bikers, hikers, and equestrians.

Singletrack Trails will continue to build new trail and maintain others during the 2018 project season.

HIGHLIGHTS:

Ute Valley Park, Eastern Loop Trail (2015)

- 1.5-miles new trail construction
- Volunteer support for additional 2000-feet of new trail construction
- Social trail closures
- Additional trail maintenance

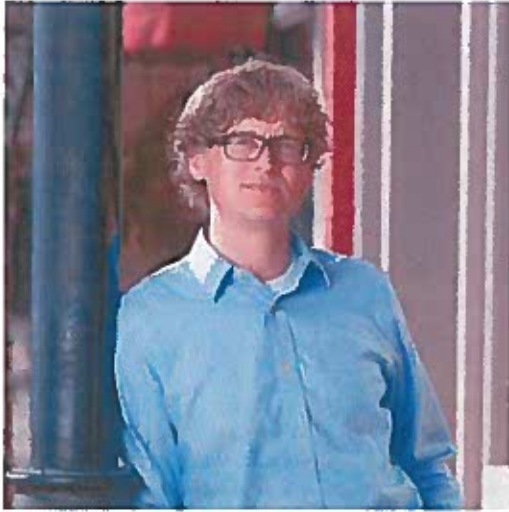
Red Rock Canyon Open Space (2016)

- Repair of 11,000-feet of damaged trail

Lake Moraine Trail Construction (2017-18)

- 4-miles of new trail construction
- Custom new bridges built on-site





DHM DESIGN

JASON JAYNES

Principal | Studio Manager | Professional Landscape Architect (CO, WY, OR)

Jason has been involved in a broad range of projects, including trail planning, feasibility and visual analysis, and public process planning, and public presentations and has an extensive history of public work in the greater Roaring Fork valley. Jason has been directly involved in numerous LEED Certified and sustainably focused projects in the region. He believes that the components of environmental stewardship, functionality and human comfort are inextricable from the design process and the ultimate, lasting quality of a built project.

ABOUT

EDUCATION

B.S. in Landscape Architecture
Kansas State University, 2000

CERTIFICATIONS

Professional Landscape Architect
Colorado | Wyoming | Oregon

AREAS OF EXPERTISE

Trails And Greenways
Public Process
Visualization
Alignment Review
Amenity Design & Detailing
Residential Design
Civic & Municipal
Project Management

CONTACT

jjaynes@dhmdesign.com
970.963.6520
www.dhmdesign.com

NOTABLE WORK

Breckenridge Vail Resorts Mountain Improvements | Breckenridge, CO

The Breckenridge Summer Special Uses project was designed to enhance on-mountain summer access and amenities for a diverse range of users. DHM worked hand-in-hand with Vail Resorts Development Company, Breckenridge Mountain planning staff, the contracting team and US Forest Service staff to create a holistic plan that integrates multiple recreation amenities while maintaining the ecological experience of the site and supporting USFS goals for public education and interaction with the natural environment on public lands. The project included planning, design, and logistics for improvements spanning three peaks at the ski area, with improvements ranging from canopy tours, ziplines, a climbing wall and an observation tower to trailheads, interpretive nodes, primitive footpaths and singletrack mountain bike trails. Using the Record of Decision of the NEPA process, the team developed construction management and access plans, project staging and phasing, off-site visibility analysis, overall master plans, technical site plans, and illustrative graphics used to describe the intent of the finished improvements.

Pitkin County On-Call Services - Ecological | Pitkin County, CO

Since 2014, DHM has been on call to provide high quality ecological services to Pitkin County. Our project team includes professionals with expertise in project management; plant ecology; wildlife biology; wetlands delineation, mitigation and permitting; stream hydrology; ecological restoration; soil science; resource management; project design; Geographic Information Systems (GIS); community forestry and arboriculture; agricultural property assessments; and NEPA compliance.

Aspen Valley Ranch | Aspen, CO

Aspen Valley Ranch is a 1,359 acre property located in Pitkin County, Colorado. DHM analyzed and mapped vegetative zones throughout this expansive private ranch holding. The analysis informed the creation of a management plan to help mitigate against invasive weeds and support the growth of favored species. The areas were analyzed, noxious and nuisance species type and distribution were mapped and a detailed implementation plan with a schedule was developed to assist ranch management in noxious control efforts. According to the Colorado Parks and Wildlife species activity data, Aspen Valley Ranch provides significant habitat potential for several charismatic game species including: elk, mule deer, black bear, bald eagle, and mountain lion (Colorado Parks and Wildlife, 2015). For the purpose of developing a weed management plan for the property, a broad classification was used to define and map "vegetation zones". DHM continues to monitor and evaluate noxious vegetation control efforts on the property.

Carbondale Recreation Center | Carbondale, CO

Certified LEED Platinum 2009

ASLA 2009 Merit Award for Design

ASLA 2009 Land Stewardship Award for Design

The landscape around the Town Rec Center building, Town Hall, and parking lot has been transformed into a community garden demonstrating irrigation specific landscape zones and stormwater management. Signage describing the different systems and plant communities reinforce the educational component of the garden. DHM provided site plans & details, garden design, GOCO grant assistance, and LEED point assistance.

JASON JAYNES

Principal | Studio Manager | Professional Landscape Architect (CO, WY, OR)

RECENT PROJECTS

Parks & Recreation

Crown Mountain Park; El Jebel, CO
Carbondale Gateway Park; Carbondale, CO
Aspen Golf Clubhouse; Aspen, CO
Truscott Tennis Courts; Aspen, CO
Aspen Recreation Center; Aspen, CO
North Face Park; Carbondale, CO
Steamboat Springs Community Center; Steamboat Springs, CO

LEED Certification, 2008

Wingate Park; Grand Junction, CO
Rocky Mountain National Park Amphitheater; Estes Park, CO
Orchard Mesa Park; Grand Junction, CO
Rio Grand Trail Head; Basalt, CO
Glassier Open Space Planning; Roaring Fork Valley, CO
Aspen Bike Park Feasibility Study; Aspen, CO
CDOW Outdoor Discovery Center and Regional Division Office;
Gunnison, CO

Carbondale Community and Recreation Center;
Carbondale, CO

LEED Platinum Certification 2009

CCASLA Merit Award for Design 2009

CCASLA Land Stewardship Award for Design 2009

Campus

Aspen Valley Hospital Master Plan; Aspen, CO

LEED Certification, 2012

Aspen Community Campus; Aspen, CO

CCASLA Merit Award for Design 1999, 2008

CCASLA Land Stewardship Award 1999

Carbondale Middle School; Carbondale, CO

Basalt High School; Basalt, CO

Carbondale Community School; Carbondale, CO

Cultural

Carbondale Comprehensive Plan; Carbondale, CO

Columbine Memorial; Littleton, CO

CCASLA Merit Award for Planning and Urban Design 2003

Aspen Civic Center Master Plan; Aspen, CO

Camp Hale Master Plan; Leadville, CO

World War II Memorial and Park; Jersey City, NJ

Freedom Park Competition; Pretoria, South Africa

Gunnison County Courthouse; Gunnison, CO

Residential Planning

Burlingame Ranch Affordable Housing; Aspen, CO

ASLA Award of Honor in Analysis and Planning 2005

Truscott Affordable Housing; Aspen, CO

River Valley Ranch Streetscape; Carbondale, CO

River Valley Ranch Design Review Board; Carbondale, CO

Top of Mill; Aspen, CO

Bella Vista; Silt, CO

Residential

Missouri Heights Residence; Carbondale, CO

Grayhead Residence; Telluride, CO

Wheeler Residence; Aspen, CO

River Valley Ranch Residence; Carbondale, CO

River Valley Ranch Water Feature; Carbondale, CO

South Aspen Street Townhomes; Aspen, CO

Starwood Residence; Aspen, CO

Woody Creek Residence; Aspen, CO

Burlingame Ranch Single Family Residence; Aspen, CO

DRCL Ranch Guest House; Aspen, CO

Resort

Lift One Lodge; Aspen, CO

Lodge at Aspen Mountain; Aspen, CO

Breckenridge Summer Use Planning; Breckenridge, CO

Urban, Transportation, & Streetscape

Mill Street; Aspen, CO

Neale Avenue Improvements; Aspen, CO

Park and Brown Improvements; Aspen, CO

Downtown Montrose Plan; Montrose, CO

Town of Frisco Streetscape and Wayfinding; Frisco, CO

Portland Light Rail Vision; Portland, OR

Basalt Ave Highway 82 Underpass; Basalt, CO

Telluride Four Corners Mixed Use Development; Aspen, CO

Rural & Ranch

Aspen Valley Ranch; Aspen, CO

Miller Farm; Boulder, UT

Rocky Mountain Biological Laboratory; Gothic, CO



DHM DESIGN

STEPHEN ELLSPERMAN

Principal | Director of Ecological Planning

Stephen has 25 years of experience in all aspects of natural resource management, permitting, and planning. From park and open space management to wetland design and construction, Stephen's work is permeated by his deep connection to ecological relationships. He is passionate about the protection and understanding of native ecosystems and strives to harmonize project planning with ecological conditions and future opportunities. Stephen's ability to translate the ecological processes at work within each project is an invaluable resource that enriches both the design and the client's attitude towards environmental awareness.

ABOUT

EDUCATION

B.S. in Natural Resource Management
Colorado State University, 1991

BOARD COMMITMENTS

Roaring Fork Conservancy
2000-Present
Eagle County Regional Planning Commission
2012-2014
Aspen Center for Environmental Studies
Rock Bottom Ranch Council
2011-Present
Eagle County Open Space Board
2006-2009, 2011-2012
Pitkin County Open Space and Trails Management Plan
Advisory Committee, 2013-2015

AREAS OF EXPERTISE

Due Diligence
Permitting
Mitigation and Restoration
Restoration Design and Revegetation
Wetland Restoration & Construction
Stormwater Management
Wildlife Habitat
Natural Resource Master Planning
River System Restoration & Planning
Ecological Restoration
Reclamation
Open Space Planning & Management
Trails System Planning & Implementation
Community Forestry

CONTACT

sellsperman@dhmdesign.com
970.963.6520
www.dhmdesign.com

NOTABLE WORK

Lazy Glen Trail and Open Space | Pitkin County, CO

DHM is currently working on the On-Call Ecological Team for Pitkin County, assisting with a number of ecological projects. Notably in those projects in 2017, we assisted with the ecological assessment and trail planning through Lazy Glen Open Space, which included working with community of Lazy Glen - a mobile home community directly adjacent, with bilingual trail interpretive signage and layout. We also completed agricultural assessments and agricultural assessments on Sky Mountain Park in the Pitkin County Open Space Program.

Eagle Valley Trail System Biological Evaluation | Eagle County, CO

DHM provided analysis and determination of effects of the proposed action of completing four sections of the Eagle Valley Trail from Eagle-Vail to Dowd Junction. The Eagle Valley Trail System currently has 19 miles of uncompleted trail, completion of these trail sections would connect existing sections of the Eagle Valley Trail System. This biological evaluation will examine the natural environmental resources that could be affected by the proposed action including effects to wildlife, threatened and endangered species including plants, and wetland areas located within and surrounding the project area.

Breckenridge Vail Resorts Mountain Improvements | Breckenridge, CO

The Breckenridge Summer Special Uses project was designed to enhance on-mountain summer access and amenities for a diverse range of users. DHM worked hand-in-hand with Vail Resorts Development Company, Breckenridge Mountain planning staff, the contracting team and US Forest Service staff to create a holistic plan that integrates multiple recreation amenities while maintaining the ecological experience of the site and supporting USFS goals for public education and interaction with the natural environment on public lands. The project included planning, design, and logistics for improvements spanning three peaks at the ski area, with improvements ranging from canopy tours, ziplines, a climbing wall and an observation tower to trailheads, interpretive nodes, primitive footpaths and singletrack mountain bike trails. Using the Record of Decision of the NEPA process, the team developed construction management and access plans, project staging and phasing, off-site visibility analysis, overall master plans, technical site plans, and illustrative graphics used to describe the intent of the finished improvements.

STEPHEN ELLSPERMAN

Principal | Director of Ecological Planning

RECENT PROJECTS

Open Space Planning & Management

Platte Farm Open Space; Denver, CO
Moore Open Space; Aspen, CO
Crown Mountain Park Master Plan; El Jebel, CO
Little Ajax Open Space; Aspen, CO
Marolt / Thomas Open Space; Aspen, CO
Smuggler Mountain Open Space; Pitkin County, CO

Trails System Planning & Implementation

Crystal Valley Trail; Marble, CO
Crested Butte Trails Master Plan; Crested Butte, CO

Ecological Restoration

Rock Bottom Ranch Corona Creek Restoration; Eagle County, CO
Miles Property; Redstone, CO
Weber Creek Ranch; Mancos, CO
Ziegler-Snowmass Divide CE Restoration; Snowmass, CO
Americus Ranch; Bozeman, MT

Natural Resource Master Planning

Sky Mountain Open Space; Snowmass, CO
*Certificate of Excellence for Management Planning
Colorado Wildlife Society 2012*
Rocky Mountain Institute; Basalt, CO
Windriver Ranch; El Jebel, CO
City of Aspen Noxious Vegetation Master Plan; Aspen, CO
River Valley Ranch Natural Resources Master Plan;
Carbondale, CO
Blue Creek Ranch; Carbondale, CO
Midland Park Open Space; Basalt, CO
Basalt Bluffs; Basalt, CO
Cerise Ranch; Garfield County, CO
Cozy Point Ranch; Pitkin County, CO
Pokorny Development; Basalt, CO
4 Diamond Ranch; Wilsall, MT
Junebug Farm; Eagle County, CO
Bear Wallow Ranch; New Castle, CO

River System Restoration & Planning

Basalt River Restoration; Basalt, CO
2016 CASFM Honor Award
Old Pond Park; Basalt, CO
Flying Fish Project; Basalt, CO
Bear Dance Ranch; Eagle County, CO
James H Smith Open Space; Aspen, CO
Mills Property; Pitkin County, CO
South Platte River Restoration; Larimer County, CO
Porcupine Ranch Stream Restoration; Castle Valley, UT

Rural

Ucross Foundation & Ranch; Sheridan, WY
*ASLA Colorado President's Award of Excellence in Planning 2011
ASLA Colorado Land Stewardship Award 2011*
Wildhorse Ranch; Harney County, OR
*ASLA Award of Honor in Analysis and Planning 2007
ASLA Oregon Award of Excellence 2008*
Clear W Ranch; Pitkin County, CO
Frying Pan Canyon Ranch; Eagle County, CO
Moon Run Ranch; Old Snowmass, CO
Bear Ridge Ranch; Old Snowmass, CO
BelleJack Blue Ranch; Woody Creek, CO
Double L Ranch; Durango, CO
Sutey Ranch & Crystal River Ranch; Roaring Fork Valley, CO
Evans Ranch; Telluride, CO

Reclamation

10th Mountain Hut System; Leadville, CO
Henry Stein Park; Pitkin County, CO
Aspen Mass Restoration Project; Aspen, CO
Little Ajax; Aspen, CO
Yellowstone Basin Ranch; West Yellowstone, MT

Residential

Wheeler Ranch; Watson Divide, CO
Blackie Residence & Ranch; Snowmass, CO
Skyline Residence; Kiev, Ukraine
Ducote Residence; Aspen, CO
76 Placer Lane; Aspen, CO
Knollwood Forestry; Basalt, CO

***Stephen's Previous Experience:**

Director of Parks and Open Space, City of Aspen

Stephen was previously the Director of an extensive system of lands, natural resources, and recreational facilities in the community of Aspen. He managed an extensive system of natural resources, open space, forestry, trails, recreation resources, parks facilities, wildlife resources, visitor information facilities, visitor information programs, trails systems, cross-country trails systems, outdoor recreation facilities and programs, athletic facilities, commercial core facilities, cultural facilities and resources, public information, capital construction and improvements programs, and facilities management.



DHM DESIGN

CHRIS BRANDT

Associate | Professional Landscape Architect (CO)

As a landscape architect, Chris has substantial experience in design, in-depth construction detailing, and hand drawn graphics. A native Oregonian transplanted to Colorado, his professional interests gravitate towards the sustainable use of water and the thoughtful inclusion of rainwater as a design amenity. His knowledge of materials paired with a strong understanding of construction methods has contributed to a richly diverse group of built environments.

ABOUT

EDUCATION

B. of Landscape Architecture
University of Oregon, 1997

REGISTRATIONS

Professional Landscape Architect | Colorado

BOARDS

Red Hill Council; Carbondale, CO
Board Member, Trail Work Crew Leader

RECENT PROJECTS

Hallam Bluff Private Residence; Aspen, CO
Aspen Club; Aspen, CO
Telluride Transfer Southwest Corner; Telluride, CO
Loop PDX; Portland OR
4 Diamond Ranch; Wilsall, MT
Basalt River Restoration; Basalt, CO
Moonlight Basin Lodge; Big Sky, MT
Orchard Mesa Detention Pond; Grand Junction, CO
Aspen Valley Ranch; Aspen, CO
Little Woody Creek Residence; Woody Creek, CO
June Bug Ranch; Eagle County, CO
Snake River Club; Jackson, WY
Cabot Cliffs; Inverness, Nova Scotia, Canada
Roaring Fork Club; Roaring Fork Valley, CO

VOLUNTEER WORK

Red Hill Council; Carbondale, CO
Board Member, Trail Repair Crew
COPMOBA; Fruita, CO
Trail Construction – Mack Ridge re-route
Carbondale Bike Park; Carbondale, CO
Design Consultation and Planning, coordination
Bonedale Bike Week; Carbondale, CO
Planning Committee member
Turkey Day Cyclocross Race; Carbondale, CO
Race Organizer, Course Designer, Skills Clinic Instructor

CONTACT

cbrandt@dhmdesign.com
970.963.6520
www.dhmdesign.com

NOTABLE WORK

Little Woody Creek Private Residence | Woody Creek, CO

DHM developed plans for this family ranch of 128 acres, located in the upper reaches of the narrow Little Woody Creek Valley in Pitkin County, Colorado. Our planning efforts include ecological and site analysis, as well as the remodel of three existing dwellings, siting of a new house, driveway, barns, and outbuildings within the context of an existing hay meadow and along an existing stream. Utilizing a sensitive design approach, DHM has carefully limited development to envelopes adjacent to existing agricultural zones, avoiding stream setback zones while maximizing views of the Elk Mountains. Nestled against adjacent National Forest Service lands, the uppermost portion of the property will be kept undisturbed to preserve the site's rich ecosystem and habitat value while creating opportunity for wildlife viewing.

Aspen Valley Ranch | Aspen, CO

Aspen Valley Ranch is a 1,359 acre property located in Pitkin County, Colorado. DHM analyzed and mapped vegetative zones throughout this expansive private ranch holding. The analysis informed the creation of a management plan to help mitigate against invasive weeds and support the growth of favored species. The areas were analyzed, noxious and nuisance species type and distribution were mapped and a detailed implementation plan with a schedule was developed to assist ranch management in noxious control efforts. According to the Colorado Parks and Wildlife species activity data, Aspen Valley Ranch provides significant habitat potential for several charismatic game species including: elk, mule deer, black bear, bald eagle, and mountain lion (Colorado Parks and Wildlife, 2015). For the purpose of developing a weed management plan for the property, a broad classification was used to define and map "vegetation zones". DHM continues to monitor and evaluate noxious vegetation control efforts on the property.

Pitkin County On-Call Services - Ecological | Pitkin County, CO

Since 2014, DHM has been on call to provide high quality ecological services to Pitkin County. Our project team includes professionals with expertise in project management; plant ecology; wildlife biology; wetlands delineation, mitigation and permitting; stream hydrology; ecological restoration; soil science; resource management; project design; Geographic Information Systems (GIS); community forestry and arboriculture; agricultural property assessments; and NEPA compliance.



DHM DESIGN

KEN ABEL

Environmental Graphic Designer

Ken joined DHM in 2011 with exceptional graphic expertise. With his degree in Computer Imaging and background in graphic design and print production, Ken is able to design wayfinding signage, interpretive displays, identity and branding material, master plan reports, advertisements, brochures and many other graphic design materials for any type of project. Ken has successfully designed wayfinding and interpretive displays for small and large outdoor public spaces throughout the front range with outstanding results that set DHM apart from the competition.

ABOUT

EDUCATION

B. Fine Arts, Emphasis: Computer Imaging,
Metropolitan State University of Denver, 2007

AWARDS

Colorado Chapter of Society for Marketing
Professional Services (SMPS)
- Marketing Identity, 2013
- Website, 2014
Governor's Award for Downtown Excellence
Best Professional Service In Action Award, 2013
- GOCO Grant Toolkit

RECENT PROJECTS

Astoria Hot Springs Public Outreach & Website;
Hoback, WY
Aurora Sports Park Wayfinding and Monument
Signage; Aurora, CO
Cahill All-Abilities Park Interpretive Signage;
Denver, CO
Ewing Mesa Multi Event Center Website;
Durango, CO
Heritage Trail Interpretive Signage; Thornton, CO
Johnson-Habitat Park Interpretive Signage;
Denver, CO
NPS National Long Range Transportation Plan;
Nationwide
NPS Sequoia & Kings Canyon Strategic Portfolio Plan;
Tulare County, CA
River Run Park Interpretive Signage; Denver, CO
Snake River Sporting Club Wayfinding; Jackson, WY
Solstice Entry Monument and Wayfinding;
Littleton, CO
Walk.Bike.Fit Multi-Modal Active Transportation Plan;
Commerce City, CO
West End Wayfinding and Website; Montrose, CO

CONTACT

kabel@dhmdesign.com
303.892.5566
www.dhmdesign.com

NOTABLE WORK

West End Wayfinding | Montrose County, CO

DHM Design was retained by Region 10 Economic Development and Planning to complete a Wayfinding Plan for the West End of Montrose County Colorado. The area has been hit by closures to long-standing industry and the economy is expected to be impacted. DHM worked with a stakeholder group to determine the key attractions in the area. There are hundreds of miles of trails and significant historical sites that the West End wants to promote to help attract tourism. Conceptual monument and wayfinding signs were developed to accentuate each site's character.

Aurora Sports Park Wayfinding and Entry Monument | Aurora, CO

DHM Design was asked to create new signage, wayfinding, and monumentation of the nationally recognized Aurora Sports Park. The new signage and wayfinding system revamps the complex's field identity system which achieves two goals: it allows for future expansions without needed to recreate the signage and wayfinding system in the future; and creates a more user friendly and understandable way for visitors to find individual fields which ultimately improves pedestrian safety.

Johnson-Habitat Park Interpretive Signage | Denver, CO

DHM Design worked closely with the Denver Department of Parks and Recreation (DPR) and South Platte River Environmental Education (SPREE) to prepare signage concepts that interpret, educate, call to action and provide guidance and direction for a number of natural resources and activities within Denver's premier outdoor environmental education park.

Grant Frontier Park Interpretive Signage | Denver, CO

Because of the success at Johnson-Habitat Park, the City of Denver asked DHM to create new interpretive signage at Grant Frontier Park. Grant Frontier is a historic site with a rich, albeit brief history on early Denver settlement. DHM is currently developing nine interpretive signs which are split into three themed nodes; one focused on cultural history, one focused on the South Platte River, and the last focused on the native plants and animals. Additionally, there will be many site details added to park that promote interactivity and exploration.

Cahill All-Abilities Park Interpretive Signage | Cheyenne, WY

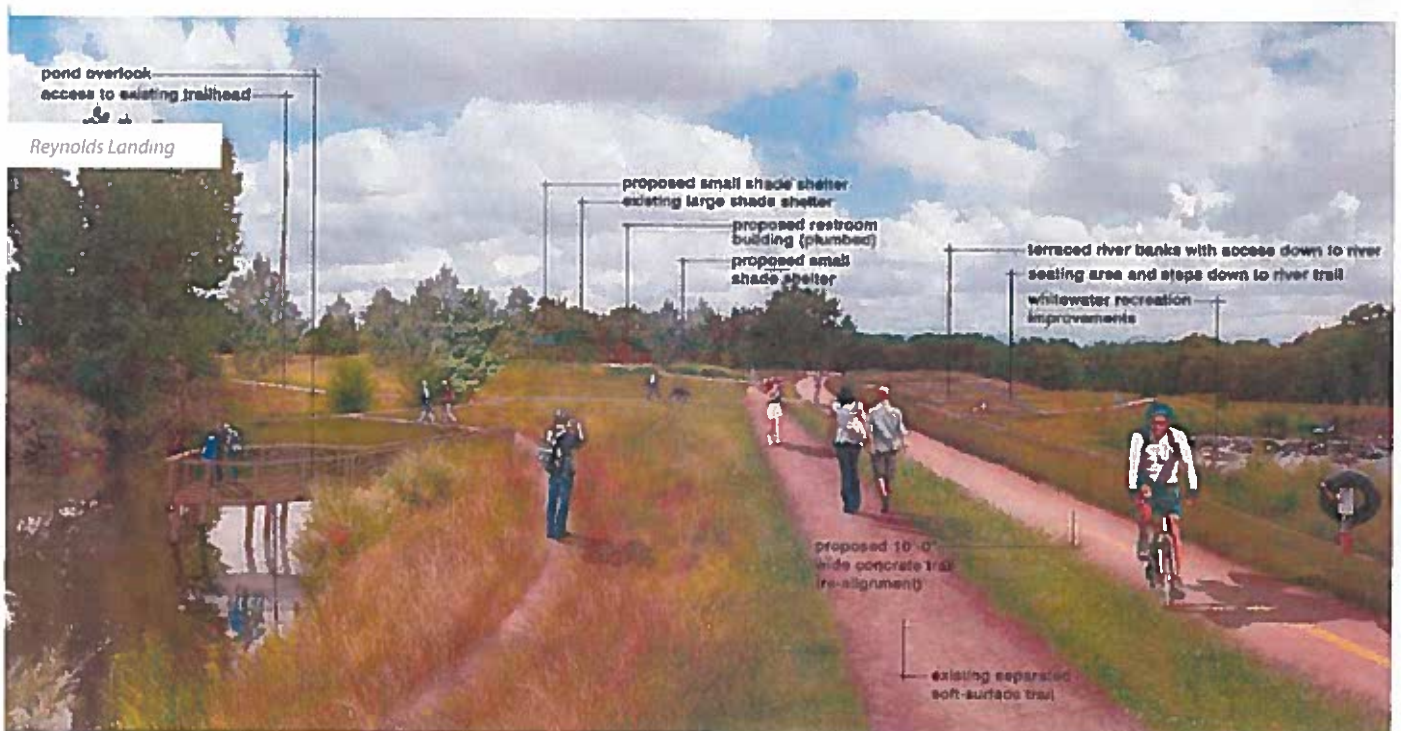
The City of Cheyenne reached out to DHM Design to assist with the Master Planning of the Cahill Park All-Abilities Park. Through the process, DHM staff met with City Staff, Library Staff and Project Stakeholders to gain an understanding of needs for the project and how to potentially tie it into the Library's early literacy program. Through the process, DHM Design came up with an "Exploration of Historical Travel" through the Cheyenne area theme. With this theme, we were able to incorporate numerous educational pieces for playground users of all ages and abilities, educational looped trail and iconic educational nodes along the trail.

TRAILS, OPEN SPACE, GREENWAYS

Trails, open space, and greenways not only provide recreation opportunities, but connect neighborhoods and provide safe alternative transportation options. We believe any worthy plan must be structured around a high quality vision. This calls for a combination of sensitivity to the site and the community as well as innovation and practicality. Our team has extensive experience in the planning and implementation of award-winning trail and greenway plans with the technical design knowledge of how the trail is to be built.

Many of the Trails and greenways that we enjoy today are part of the National Trails System. Since its inception in 1968, over 1,000 national recreation trails have been created across the country. Countless more trails have been created with the help of other organizations, such as the Greenway Foundation, American Trails, and the Rails to Trails Conservancy, which all contribute to an impressive network of trails in urban, rural, and wild areas.

In many cases, the creation of greenways has effectively reduced local greenhouse gas emissions, decreased air pollution, and reclaimed previously polluted urban rivers and tributaries. Businesses, municipalities, and nonprofits are joining forces to restore these priceless urban corridors and the result is energized communities, increased property values, and healthier people.



RECENT PROJECTS

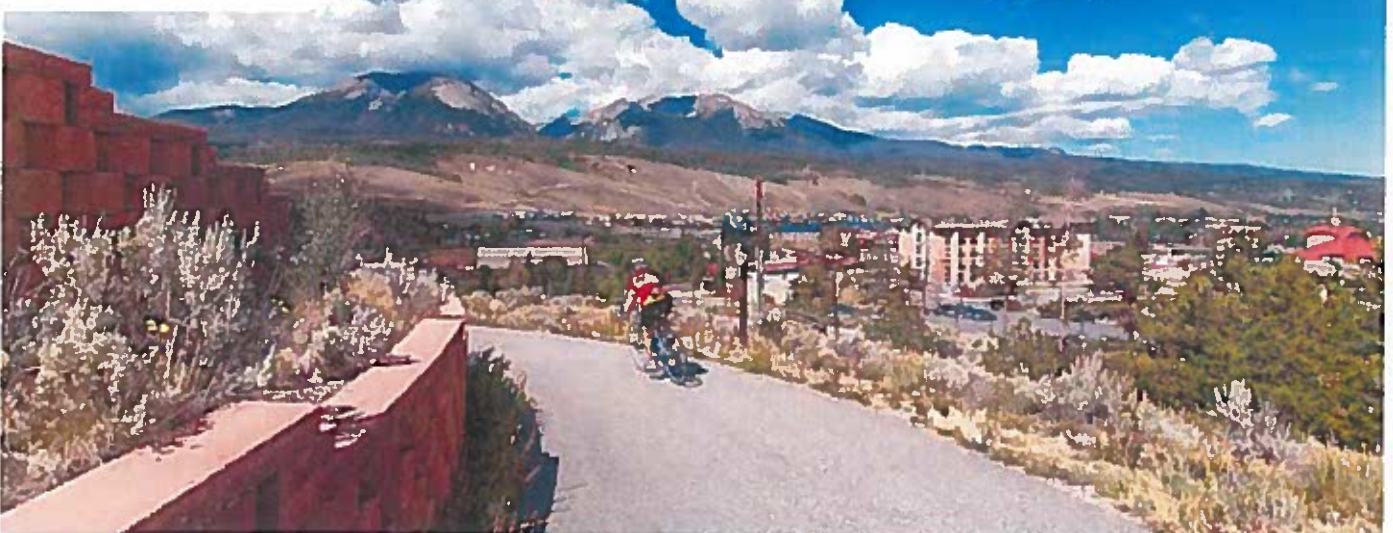
Adams County Open Space 88th Ave.; Adams County, CO
Animas River Trail - Various Sections; Durango, CO
Arkansas River Trail, Florence; Florence, CO
Bear Creek Trail and Greenway; Morrison, CO
Blue River Trail Segment 6; Silverthorne, CO
Carbondale/Crested Butte Trail; Carbondale, CO
Centennial Trail; Centennial, CO
Cortez to Mancos Trails; Cortez & Mancos, CO
Crystal Valley Trail Wetlands; Pitkin County, CO
Delta County Trails Recreation Master Plan; Delta, CO
Durango River Access Sites; Durango, CO
ECOS Trails Project; Eagle County, CO
Elaine T. Valente Open Space; Adams County, CO
Fremont Trails, Opens Space, & River Master Plan; Fremont County, CO
Grange Hall Creek Trail; Northglenn, CO

Ignacio Parks, Open Space, and Trails Master Plan; Ignacio, CO
Mancos Trails Master Plan; Mancos, CO
Milliken Trails Master Plan; Milliken, CO
Morrison Trails Plan; Morrison, CO
Northern Range Loop Trail; Commerce City, CO
Paths to Mesa Verde; Mesa Verde, CO
Silverthorne Parks, Trails and Open Space; Silverthorne, CO
Three Springs POST Master Plan; Durango, CO
Town to Lakes Trails Master Plan; Archuleta County, CO
Uncompahgre Riverway Master Plan; Montrose, CO
Victor Parks & Trails Master Plan; Victor, CO
Three Springs POST Master Plan; Durango, CO
Town to Lakes Trails Master Plan; Archuleta County, CO
Uncompahgre Riverway Master Plan; Montrose, CO
Victor Parks & Trails Master Plan; Victor, CO

Sand Creek Trail and Greenway



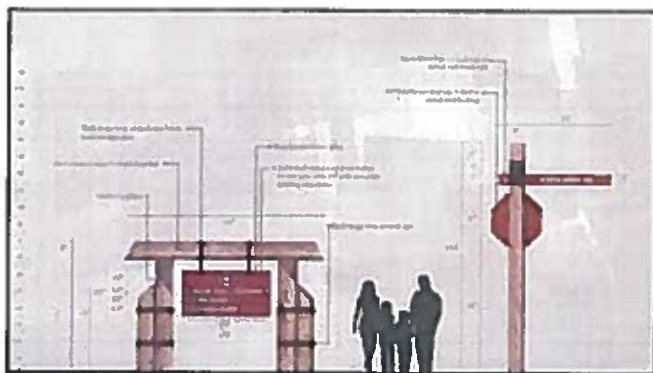
Silverthorne Trails Master Plan



WAYFINDING SYSTEMS

A wayfinding package fits the visitor within the space and addresses identity, wayfinding, fit and finish, furnishings, interpretation, community awareness, context and aesthetics. We are a group of landscape architects, ecologists and graphic designers who work together to connect people to place. Through a collaborative design process, we communicate stories, educate visitors, activate space and orient newcomers for the purpose of both navigation, discovery and safety. DHM and our team understands how to work within existing sites that:

- creates a distinct identity
- defines a sense of place
- inspires community pride
- distinguishes the various character districts
- identifies neighborhoods with pride
- can be affordable to build and maintain
- can help with wayfinding and interpretation
- creates a sense of comfort and familiarity
- expresses the local culture, history, ecology and flavor



Arrabelle Village Wayfinding
 Aurora Sports Park Monumentation and Wayfinding
 Bear Creek Greenway
 Big Dry Creek Wayfinding
 Blue River Trail
 Breckenridge Peak 7 and 8
 Carbondale Wayfinding
 Commerce City Gateway
 Eagle Ranch Wayfinding
 Frisco Wayfinding
 Gateway Wayfinding
 Jefferson County Fairgrounds Signs
 Lake County Wayfinding
 Moonlight Basing Monumentation and Wayfinding
 Northern Range Streetscape Design Guidelines
 Ouray Wayfinding
 Pioneer Park Wayfinding
 Razorback Greenway Wayfinding
 Reunion Monuments
 Ridgway Wayfinding
 Rifle Wayfinding
 Sand Creek Greenway
 Second Creek Wayfinding
 Silverthorne Streetscape
 Snake River Monumentation and Wayfinding
 Solstice Wayfinding Conceptual Design
 Spanish Peaks Monumentation and Wayfinding
 Town of Eagle Wayfinding
 Victor Wayfinding
 Village at Centennial Retail Center
 West End Wayfinding



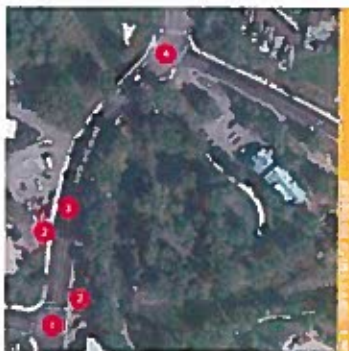
DHM DESIGN

PEDESTRIAN AND BICYCLE FACILITIES

Trails, greenways and pedestrian facilities not only provide recreation opportunities, but connect neighborhoods and provide safe alternative transportation options. We believe any worthy plan must be structured around a high quality vision. This calls for a combination of sensitivity to the site and the community as well as innovation and practicality. Our team has extensive experience in the planning and implementation of award-winning trail and greenway plans with the technical design knowledge of how the trail is to be built.

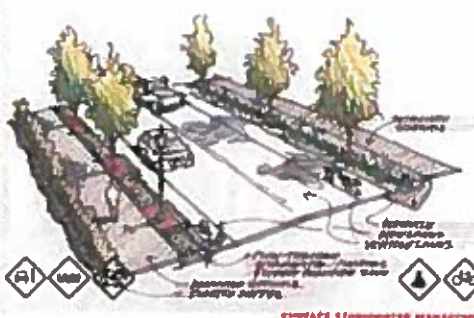
DHM has a long and successful relationship with CDOT, from the early days of the company where we worked on several I-25 Interchanges in the Denver Tech Center to our current day standing as a qualified vendor with the agency. Whether CDOT is our primary client or they are the funding source for transportation projects, DHM understands how to work with the agency and meet their standards of design and planning as we move from concept through construction.

Ridgway Pedestrian and Streetscape Plan
Uncompahgre Riverway Master Plan
Paths to Mesa Verde
Town-to-Lakes Master Plan
Mill Street - Aspen
Basalt Underpass
7th Avenue Planning - Bozeman
Walk-Bike-Fit Master Plan - Commerce City
Prairieways Action Plan
Littleton Community Trail
Wolf River Greenway
Neale Avenue Improvements and Trailhead
ECOS Trail Project - Eagle
Highway 133
Cottonwood Pass Roadway Improvements
Bear Tooth Highway



EXISTING CONDITIONS & ACTIONS

- 1 **INTERSECTION**
Intersection of proposed trail with existing road. This intersection will be a key location for trailhead information and signage. The intersection will be a key location for trailhead information and signage.
- 2 **PARKING LOT/ROAD CUTS INTERCEPT SIDEWALK**
Proposed trail will be located on the side of the road. This location will be a key location for trailhead information and signage. The intersection will be a key location for trailhead information and signage.
- 3 **TWO WIDE TRAVEL LANES**
Proposed trail will be located on the side of the road. This location will be a key location for trailhead information and signage. The intersection will be a key location for trailhead information and signage.
- 4 **REGIONAL TRAIL INTERSECTION**
Proposed trail will be located on the side of the road. This location will be a key location for trailhead information and signage. The intersection will be a key location for trailhead information and signage.



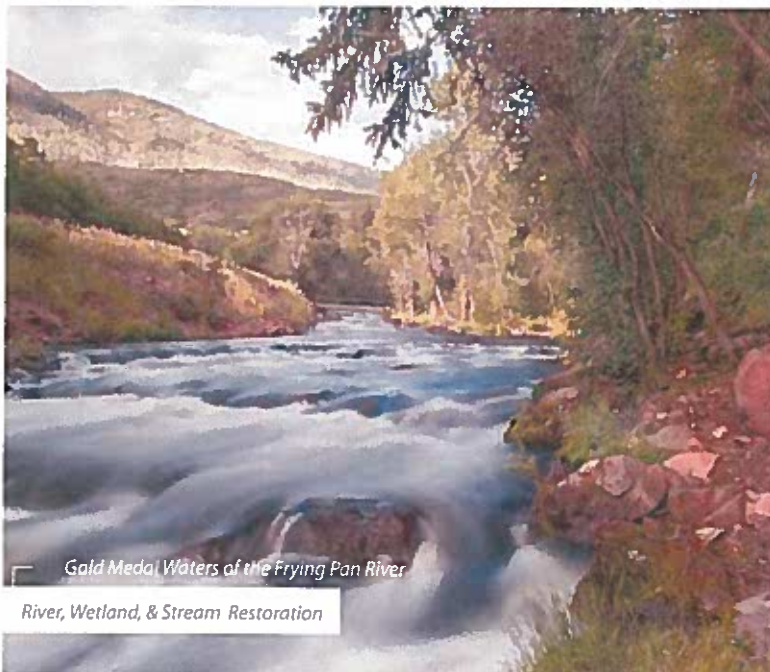
ECOLOGICAL SERVICES

Planning | Analysis | Restoration

DHM Design is passionate about enhancing the interconnection between natural systems and human development and is dedicated to protecting the integrity of the land and ecosystem in every aspect of the planning and design processes.

The DHM Design Team has spent 40 years developing an important understanding of how connections and relationships to the natural environment can be communicated through master planning processes. DHM Design is unique in that it offers in house solutions that emphasize ecological planning and natural resource management in every aspect of the planning and design processes. Our ecological team members are not outside consultants, but principals within our firm and work carefully with our design staff on all aspects of our projects. Our approach to natural area master planning is to first understand the resource carefully with dedicated analysis of the ecological components of a site. All decisions must come from this careful understanding, and through this process, sustainable and creative opportunities emerge.

DHM Design considers ecological planning the true intersection of landscape architecture, planning, and ecological services. We make a commitment to include ecological planning into how we approach all projects, from large-scale private ranches to small urban parks. These are not considered external services, but rather integrated into each of our projects. We pride ourselves in discovering unique ecological opportunities that connect landscape architecture and our design approach with the greater natural world around us.



Gold Medal Waters of the Frying Pan River

River, Wetland, & Stream Restoration

OVERALL SERVICES

- Due Diligence, Permitting, Mitigation & Restoration
- High Level Restoration Design
- Restoration Ecology

WATER RESOURCES

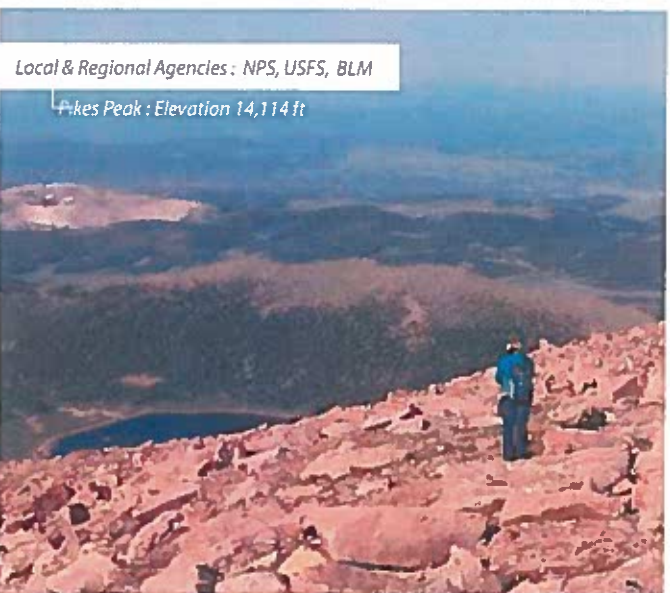
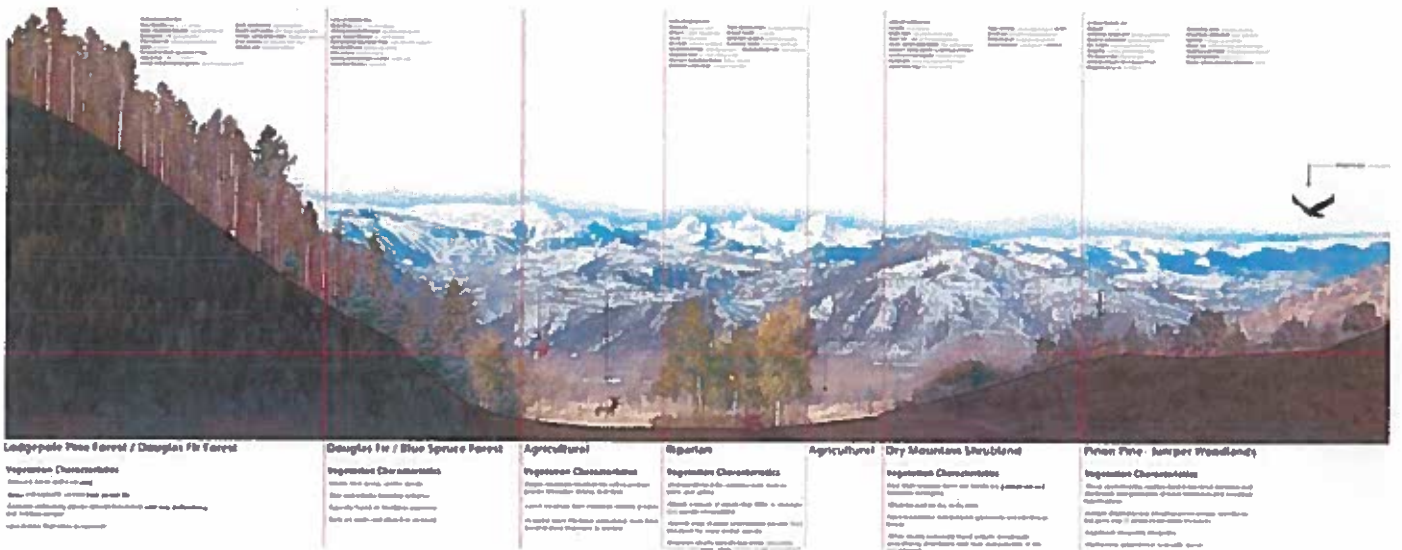
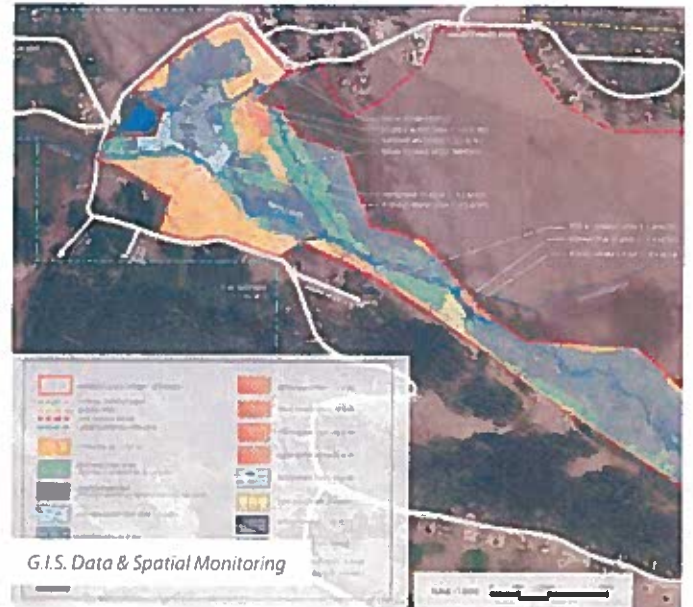
- Clean Water Act Section 404 Permitting
- Wetland Delineation & Wetland Crossing Permit (USACOE Wetland Delineation)
- Stream Permitting
- National Pollutant Discharge Elimination System (NPDES) Permit Applications
- Stormwater Pollution Prevention Plans (SWPPPs)

COMPLIANCE, PERMITTING, & PLANNING

- Visual Resource Analysis
- Erosion Sediment Control General Permits
- Threatened & Endangered Species Surveys (ESA)
- National Environmental Policy Act (NEPA)
- Phase I Environmental Site Assessments
- Environmental Inspections
- State, Federal & Local Permitting (Documentation Preparation & Submittal)
- Environmental Constraints Analysis
- Overall Site Planning & Resource Avoidance
- Public Outreach, Involvement & Education
- Mitigation Planning
- GIS Planning, Monitoring & Decision Support Tools
- Revegetation Plans

DETAILED SERVICES

- Endangered Species Act Compliance (Section 7 Consultations, Threatened & Endangered Species Surveys)
- Habitat Conservation Plans (HCPs)
- Biological Assessments & Evaluations
- Pre-Construction Avian Surveys & Nest Relocation
- Ecological Assessments & Restoration Design
- Construction Administration
- Watershed Management Plans (WMP)
- Invasive Species Management (Noxious Vegetation Management Plans)
- Forestry & Forest Restoration Plans
- Fire Hazard Analysis & Management Plans
- Grazing Plans & Agricultural Management Plans
- Conservation Banking & Wetland Mitigation Banking
- Candidate Conservation Agreements/With Assurances (CCAs)
- Special Area Management Plans (SAMPs)
- Integrated Natural Resources Management Plans (INRMPs)
- Maintenance Management Plans
- Forest Health Management Plans
- Arboricultural Studies & Reports
- Tree Mitigation Studies & Reports
- River/Flood Restoration Analysis & Plans
- Native Landscape Management Protocol
- Sustainability Responsive Park Development Plans
- Habitat For Birdwatching, Fishing, & Hunting



DHM DESIGN

FUNDING SOURCES

DHM and our partners have helped raise millions of dollars for projects around the country from recreation to education, memorials to streetscapes. We understand the complexities of pulling from multiple funding sources in an increasingly competitive environment. Through the decades, we have assisted municipalities to write and win grants, entice corporate sponsors, build relationships with private foundations and build grass roots fund-raising efforts through effective communication and planning from the earliest stages of a project. The more we know about the vision, the better we can incorporate fundable elements into the design. Through the years, we have amassed a database of hundreds of public and private grant sources, their eligibility criteria and purpose, deadlines and key contacts. A site's location, rural or urban population, and the project program can determine grant funding opportunities that defray costs of both planning and capital construction improvements. Additionally, the fact that funds have already been allocated for a project puts the client in a position to leverage that capital into additional funding. Often, the biggest challenge is in identifying funding opportunities (beyond some of the more well-known sources), distilling the list of sources down to those that really may apply, and identifying which of those grants are worth pursuing at all. Our knowledge of the grant process, ability to assist with writing and visualization all contribute to a robust funding strategy that goes beyond design and gets projects built.

SERVICES

Funding Strategy
Writing Assistance
Cost Estimation
Video Production

Grant Research
Master Planning
Visualization
Sponsor Identification



DHM assisted the City of Denver with a successful GoCo grant application that funded multiple river parks along the South Platte River.

COLORADO GRANT PROGRAMS

Arapahoe County Open Space
BEST Grant Program
Colorado Brownfields Foundation
Colorado Department of Agriculture
Colorado Department of Local Affairs
Colorado Department of Public Health and Environment
Colorado Health Foundation
Colorado Office of Economic Development
Colorado Parks and Wildlife
Conservation Trust Fund
Corporate Programs
Department of Natural Resources
Department of Transportation
Fishing is Fun
Great Outdoors Colorado
History Colorado
Jefferson County Open Space
Private Foundations

NATIONAL GRANT PROGRAMS

AgStar Fund for Rural America
Bike Park Initiative
Bureau of Land Management
Centers for Disease Control and Prevention
Department of Commerce Economic Development Administration
Department of Housing and Urban Development
Department of Interior Fish and Wildlife
Energy/Mineral Impact Fund
Environmental Protection Agency
Federal Transit Administration
Internal Revenue Service
National Endowment for the Arts
National Energy Technology Laboratory
National Inclusion Project
National Institute of Health
National Resources Conservation District
National Science Foundation
Rural Business Enterprise Grants
Rural Community Assistance Corporation
Safe Routes to School
The Daniels Fund
Tribal Wildlife Grant
US Soccer Foundation
USDA Forest Service
USDA Natural Resource Conservation Service
Wildlife and Sport Fish Restoration Program

FUNDABLE PROJECT ELEMENTS:

Recreation
Interpretation
Education
Restoration
Public Access
Specialized Programming (Biking, Trails, Fishing, OHV, Soccer, etc.)
Energy Efficiency
Public Art
Wildlife Protection
Environmental Cleanup
Public Transportation

GOCO GRANT STRATEGY

Great Outdoors Colorado (GOCO) was established in 1992 as a granting entity dedicated to improving and creating recreational parks and open spaces in Colorado through the investment of state lottery proceeds. Our experience with the GOCO process can give clients strategy and materials that support strong grant applications. Over the years the LPOR grant program has become increasingly popular and more competitive – a trend we expect will continue. A compelling strategy includes strong letters of individual and community support, high levels of youth engagement, and a master plan that builds one success off the next. As partners in the funding process, we work with stakeholders to build fundable elements into the plan, creating a compelling argument for new or additional financial assistance to get projects off the ground. Additionally, Colorado lottery revenues support the Conservation Trust Fund (CTF) through the Colorado Department of Local Affairs. CTF funding is available to local parks and recreation providers (i.e., towns, cities, counties, special districts) to provide funding for open space and land acquisition, equipment purchases, facility development, park maintenance, and for the renovation and restoration of local facilities. Best of all, CTF funding can be used to meet the matching requirement for certain funding programs.

COLORADO DEPARTMENT OF LOCAL AFFAIRS MAIN STREET PROGRAM

The Colorado Main Street® Program works throughout Colorado to help local governments and downtown organizations focus on asset-based economic development and historic preservation. DHM Design is in the pool of qualified firms eligible to assist with community needs for participating Main Street communities and to the Colorado Main Street Program as a whole.

Eligible Main Street consulting services include:

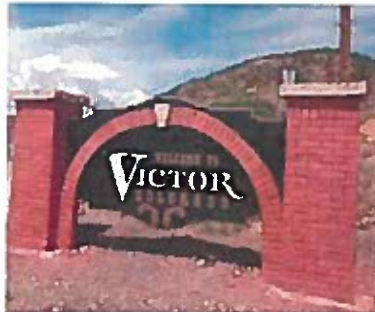
- Assess community parking, signage, and streetscaping including development of design options.
- Training on the basics of the Main Street point of Design, building improvement incentives, and historic preservation topics
- Facilitate local landmarking and development of local government areas.
- Assess buildings, districts, cultural resource and historic inventory surveys including for local, state, and national significance.
- Provide guidance on land use codes, building codes, ordinances, and historic district design standards and guidelines.
- Assist building/business owners with building assessments, project development and follow up including: historic preservation means and methods, signage, facade design, building entrance design, and cost estimates.
- Facilitate the creation of downtown maintenance plans, graphics and incorporation of sustainability and conservation in design.
- Develop community brands including logos and taglines.
- Generate community/program marketing strategies and tools for implementation such as websites, brochures, banners, and social media.

ELIGIBLE LOCAL GOVERNMENTS, PARKS AND OUTDOOR RECREATION PROJECTS:

Athletic field/court and track and field facilities
Playgrounds
Skate parks/rinks
Trails within local parks
Outdoor swimming pools
Environmental education facilities
Outdoor classrooms and natural areas
Disc golf courses
Whitewater parks
Fishing piers and boat docks
Outdoor amenities located at fairgrounds
Infrastructure (irrigation, sprinkler systems, drainage pipes, parking lots, lighting)
Amenities (restrooms, drinking fountains, benches, picnic tables, pavilions, etc.)
Expenses associated with on-the-ground project management

DOLA FINANCIAL ASSISTANCE PROGRAMS

Colorado Main Street
Energy/Mineral Impact Assistance Fund
Conservation Trust Fund
Direct Distribution
Community Development Block Grant
Limited Gaming Impact Grant
Marijuana Grant Programs
Rural Economic Development Initiative
Federal Lands Coordination
Administrative Grant



DHM developed new signage concepts funded by DOLA for a memorable West entry into the city of Victor, Colorado.

Our approach to providing a Maintenance Management Plan is to work collaboratively with the stakeholder team to understand what information contained within a plan will best serve the property and those that will provide the important maintenance activities. We feel strongly that the most helpful management plans are specific to the needs of the maintenance team in order to ensure the correct resources are allocated in the appropriate sectors. DHM will not only work with a client to develop an appropriate plan, we are also dedicated to the long-term implementation of it, including adapting plans to the needs of the maintenance team and client.

Our team engages staff who are responsible for maintenance early and often in the planning process. We review current maintenance practices and staff resources and deliver a maintenance and management plan as part of the project design. By setting specific maintenance goals and standards for levels of service, we develop necessary maintenance programs that fit with each site. When assigning maintenance levels, we give higher priority to places where use is significant. Programs are executed using the most efficient combination of resources, which are controlled and evaluated in relation to the desired level of service. Our team can also furnish cost data from which budgets can be built into future years. In addition to cost tracking of general maintenance levels, specific activities may be tracked to aid in the preparation of contract estimates or to compare in-house costs to contract costs for certain activities. We also work with clients to develop a system of work reporting and evaluation so that continual analysis can be done to improve the maintenance systems we put in place.

MAINTENANCE ELEMENTS

- Disease and Insect Control
- Snow and Ice
- Lighting
- Surfaces
- Repairs
- Inspection
- Floral Planting
- Restrooms
- Special Amenities
- Turf Care
- Fertilization
- Irrigation
- Litter Control
- Pruning

[illegible]

DHM DESIGN

3D VISUALIZATION

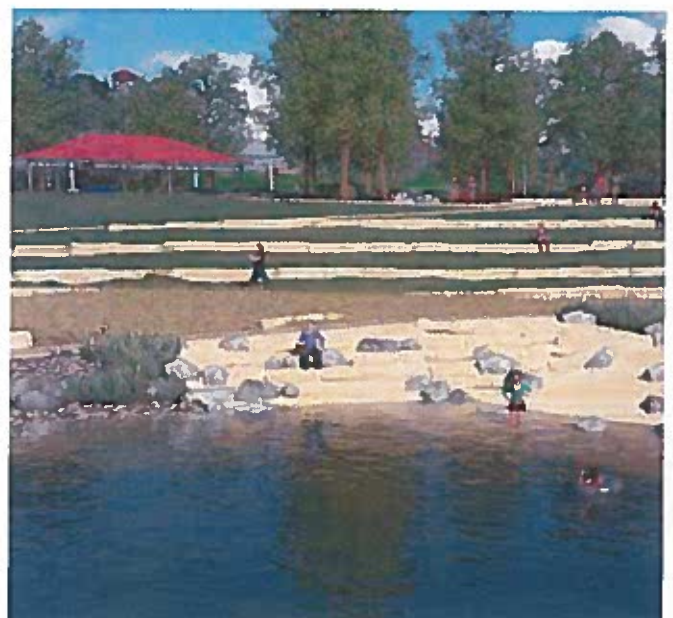
We believe communication is a critical design tool. More than a pretty picture, graphic visualizations are integral to the ongoing conversations that lead to wellconceived and artfully delivered projects. DHM uses 3D Modeling for design, design review, presentations and marketing across a broad spectrum of project types. Using a suite of rendering tools, we transform the vision of a project into still images or videos with varying level of detail for a publishable, transportable end product that puts the visitor on site in a virtual world. This service is different from other planning and design tools because it integrates design into the modeling process. Clients can make adjustments on the fly with minimal cost impacts. Additionally, our 360 technology offers a way to virtually stand on site and pan through the world with the lens of a computer, tablet or smart phone. In the end, we provide a design tool that morphs into a presentation and marketing tool, revolutionizing the way public and private projects come to life.

TOOLS

Sketchup
Lumion
3D Studio Max

PRODUCTS

3D Models
Animations
360 Views
Virtual Reality
Augmented Reality
Planning Models
Vision Casting
Building Massing
Presentation Materials



DHM DESIGN

DELTA COUNTY RECREATION MASTER TRAILS PLAN

Delta County, Colorado

Delta County determined that a comprehensive Recreation Master Trails Plan was essential for developing clear goals and objectives that will act as a guiding document for the Board of County Commissioners. Knowing that additional land and funds may be needed for existing operations as well as future trails, recreation facilities and development of infrastructure, this plan will help prioritize these needs and guide future efforts.

The team is working to inventory and evaluate the current trail systems and look for opportunities to create new connections. They will prioritize and establish a framework for improvements and links to existing trails, identify funding sources for phased implementation of new trail locations and existing trail maintenance. All of this will ultimately create a community-driven plan for success.

CLIENT

The County of Delta, Colorado

PROJECT TEAM

DHM Design
SGM Engineering, Consulting, Surveying
RPI Consulting

PROJECT DATA

GoCo Grant Funded Project
County-wide Trails Network

SERVICES

Recreational Planning
Natural Resource Assessment
Public Outreach
Project Website
Graphic Design

STATUS

In Progress



DHM DESIGN

FRISCO PENINSULA

Frisco, Colorado

DHM assembled and managed a team of talented consultants to provide planning and design services for the summer/winter recreation facilities master plan at the Town of Frisco's Peninsula Recreation Area. The planning process included a series of Town Council, staff and public meetings to define a program for current and future improvements. DHM prepared financial analysis for construction costs, yearly staffing and maintenance costs, and projections for revenue generated by the proposed 'pay-for-use' activities.

Although several previous master planning efforts had failed to garner public support, DHM was able to win support through an extensive outreach program using detailed illustrations of the proposed improvements in public meetings and websites. The master plan and the proposed first phase of the project were approved and funded by Town Council, and DHM's team was retained to provide bid and construction documentation.

The first phase includes a BMX/mountain bike park, a tubing hill/jib park with magic carpet lift and snow making system, day lodge, a new entry road into the park, visitor parking lots and associated infrastructure.

CLIENT

Town of Frisco

PROJECT TEAM

DHM Design
OZ Architecture
PEAK Engineering
Beaudin Ganze
Felsburg Holt & Ullveig

PROJECT DATA

Tubing Hill/Jib Park
BMX/Mountain Bike Park
Ice Skating Rink
Skateboard Park
Day Lodge
Magic Carpet Lift
200 Car Parking Lots
XC Skiing
Bike Trails

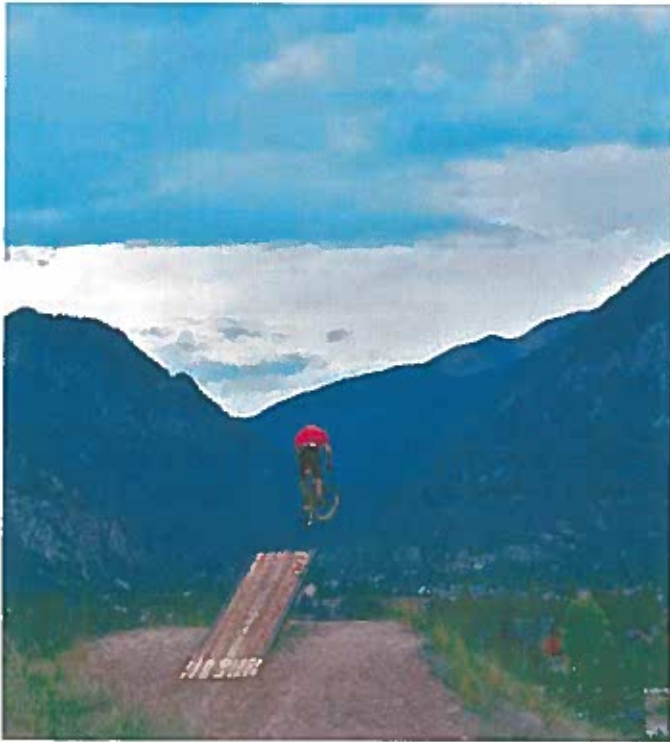
SERVICES

Recreation Area Master Planning
Landscape Architecture
Project Management

STATUS

Completed





BRECKENRIDGE VAIL RESORTS MOUNTAIN IMPROVEMENTS

Breckenridge, Colorado

The Breckenridge Summer Special Uses project was designed to enhance on-mountain summer access and amenities for a diverse range of users. DHM worked hand-in-hand with Vail Resorts Development Company, Breckenridge Mountain planning staff, the contracting team and US Forest Service staff to create a holistic plan that integrates multiple recreation amenities while maintaining the ecological experience of the site and supporting USFS goals for public education and interaction with the natural environment on public lands.

The project included planning, design, and logistics for improvements spanning three peaks at the ski area, with improvements ranging from canopy tours, ziplines, a climbing wall and an observation tower to trailheads, interpretive nodes, primitive footpaths and singletrack mountain bike trails. Using the Record of Decision of the NEPA process, the team developed construction management and access plans, project staging and phasing, off-site visibility analysis, overall master plans, technical site plans, and illustrative graphics used to describe the intent of the finished improvements.

CLIENT

Vail Resorts

PROJECT TEAM

DHM Design
Vail Resorts Development Company
Vail/Summit Mountain Planning Staff
U.S. Forest Service
Hyder Construction

PROJECT DATA

Ore Bucket Canopy Tour
Zip Line
Overlook Tower
Climbing Wall
Hiking and Mountain Biking Trails

SERVICES

Ranch Master Planning
Ecological Site Analysis and Design
NEPA ROD Analysis and Application
Landscape Architecture
Graphic Design
Construction Administration and
Documentation
Sensitive Species

STATUS

In Progress



DHM DESIGN

SILVERTHORNE TRAILS MASTER PLAN

Silverthorne, Colorado

DHM Design, along with The Greenway Team authored an ambitious master plan for Parks, Trails and Open Space for the mountain resort town of Silverthorne, Colorado. The plan sets out to continue the vision of Silverthorne as a distinctive mountain community over the next decade by creating a town defined by a pedestrian scale - a network of easily accessible trails. By preserving attributes such as scenic vistas, community gathering spaces, places of cultural and artistic expression, places of spiritual renewal and a high quality park and recreation system sufficiently, the plan sufficiently meets the needs of residents.

CLIENT

Town of Silverthorne

PROJECT TEAM

DHM Design
The Greenway Team

PROJECT DATA

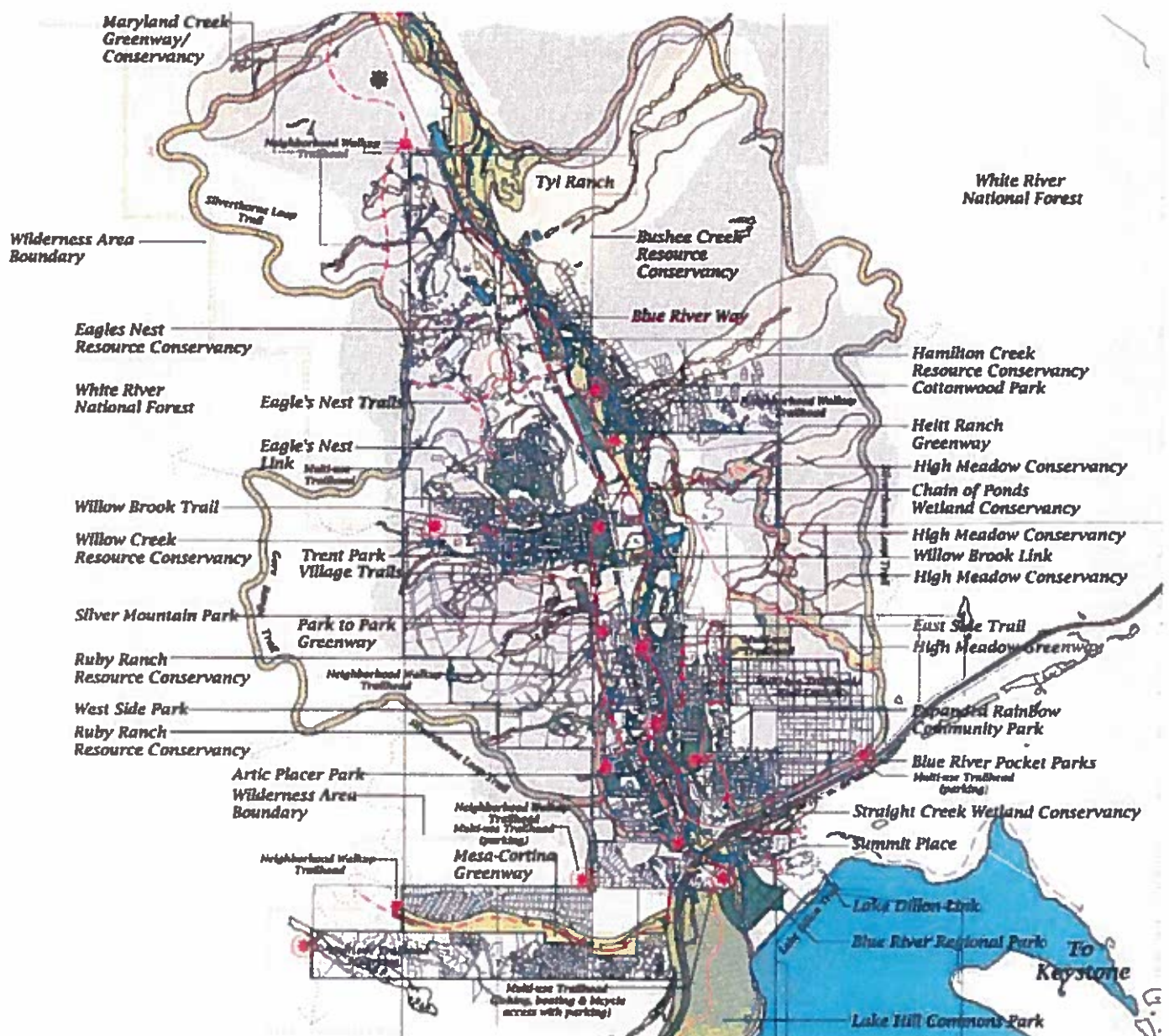
Parks, Open Space and Trails

SERVICES

Master Plan Development
Construction Documents
Construction Management

STATUS

Completed





CONTACT INFORMATION

Singletrack Trails



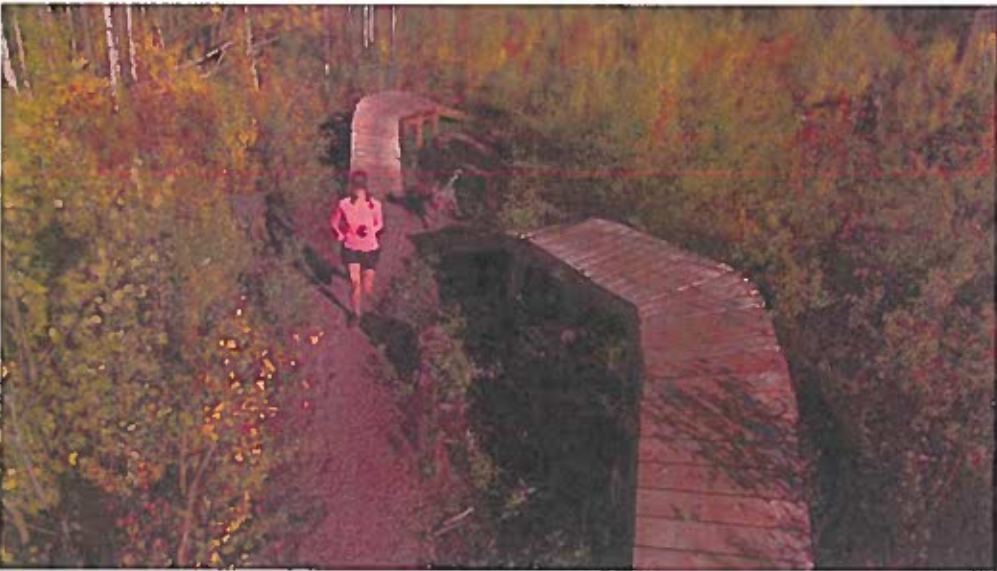
SINGLETRACK TRAILS

PO Box 1888
Fraser, CO 80442
970-364-3842
info@singletracktrails.com

SOCIAL MEDIA

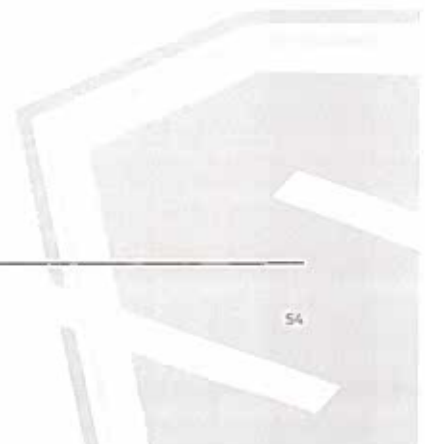
 [Facebook @singletracktrails](https://www.facebook.com/singletracktrails)

 [Instagram @singletracktrails](https://www.instagram.com/singletracktrails)



WEBSITE

singletracktrails.com



Attachment B

TOWN OF CARBONDALE

APPLICATION FOR APPOINTMENT OR REAPPOINTMENT TO TOWN ADVISORY BOARDS AND COMMISSIONS

THIS IS AN APPLICATION FOR APPOINTMENT ☒ REAPPOINTMENT ☐

NAME OF APPLICANT: Rose Rossello

MAILING ADDRESS: _____

STREET ADDRESS OF RESIDENCE: 653 Grace Dr. Carbondale

TELEPHONE: (Work) 923-8299 (Home) 309-6622 preferred

OTHER PHONE: _____ E-MAIL: happy m to rose@gmail.com

INDICATE WHERE YOU WOULD LIKE YOUR AGENDAS AND INFORMATIONAL
MATERIALS DELIVERED:

(If you are seeking reappointment, it is only necessary to fill in your name and those
informational items which have changed since you were last appointed.)

BOARD OR COMMISSION FOR WHICH (RE) APPOINTMENT IS SOUGHT:

Parks and Recreation Commission

NEW APPOINTMENT ONLY:

Describe any special knowledge, abilities, background or interests which you feel will provide a
positive contribution to the goals and purposes of the board or commission for which you are
seeking appointment. (Attach resume if desired or use an extra sheet of paper if necessary.)

Signature

Date

CONGRATULATIONS! The _____ has
appointed you to the _____ by official
action taken on _____. Your term will expire _____.

We greatly appreciate your interest and participation in the municipal government
process.

Mayor and Board of Trustees
Town of Carbondale

ROSE ROSSELLO

653 GRACE DRIVE, CARBONDALE, CO 81623
PHONE 1 (970) 309-6622 • E-MAIL HAPPYMINROSE@GMAIL.COM

Dear Parks and Recreation Commission,

I am a 3rd generation valley local and am committed to improving, promoting and engaging in all this valley has to offer. When I heard about an open space on the commission, I was excited because this position is for me!!

Together with my husband, I am a proud homeowner in downtown Carbondale. As such, I am personally vested in the parks and recreation in our town. I am very active with my 2 young children and am always going to the pool, the rec center, town events and any one of our MANY amazing parks. I feel blessed to be in a town with so many different parks and events for my family. I'm eager to be a part of the planning.

In 1993, my passion for community started when both of my parents suffered from brain damage at the same time. I watched my community come together to help my family. I discovered my passion for life and how I can use my enthusiasm as a tool to help others. I did 2 years with AmeriCorps and was on the original board that started Habitat for Humanity here in the valley.

I have been pursuing a career in child care and have been very successful. I am currently the Director of a child care program in Snowmass. Managing classrooms and teachers for years, I have developed exceptional organizational skills and have mastered the ability to budget and fundraise. I have also helped coordinate volunteers and delegate on site efforts at the 5 Point Film Festival in Carbondale since its start.

I am eager to join the efforts as a Parks and Recreation Commission Member and feel it is a perfect way to continue my passion for our town and our valley. I look forward to speaking with you soon :-)

Best Regards,
Rose Rossello

ROSE ROSSELLO

PERSONAL STATEMENT

I was born and raised in the Roaring Fork Valley, Colorado. I have been involved in volunteering and community outreach my whole life. I feel I am blessed with a true love for life and the world around me.

EMPLOYMENT

Westin Snowmass Kids Club, Snowmass, CO

KIDS CLUB DIRECTOR & GUEST SERVICES SUPERVISOR

Head Start Preschool, Carbondale, CO

DIRECTOR/LEAD TEACHER

Bristlecone Sports, Basalt, CO

LEAD SALES ASSOCIATE

Green Drake, Basalt, CO

HOTEL MANAGER

Express Yourself, Basalt, CO

BOUTIQUE MANAGER/SALES/DESIGN

Toy Shack, Basalt, CO

STORE MANAGER

AmeriCorps, Steamboat Springs, CO

HEALTHY LIFESTYLES MENTOR

AmeriCorps, Continental Divide, CO

TRAIL CREW LEADER & MENTOR

EDUCATION

1986-Current	Colorado Mountain College	Roaring Fork Valley, CO
2000-2002	University of Northern Colorado	Greeley, CO
1998-2000	E.F. International Language schools	Quito, Ecuador & Munich, Germany
1987-2000	Aspen School District	Aspen, CO

SKILLS AND EXPERIENCE

- Accomplished at Event Planning and Promotion
- Consistently Positive and Energetic Attitude
- Excellent Communication
- Technical Knowledge
- Genuinely Friendly
- Aptitude for Problem Solving
- Exceptional at Multitasking
- Analytical Professionalism
- Management & Scheduling Expertise
- Budgeting Rock Star

TOWN OF CARBONDALE

APPLICATION FOR APPOINTMENT OR REAPPOINTMENT TO TOWN ADVISORY BOARDS AND COMMISSIONS

THIS IS AN APPLICATION FOR APPOINTMENT ☒ REAPPOINTMENT ☐

NAME OF APPLICANT: Ben M. Johnston
MAILING ADDRESS: 4156 Crystal Bridge Dr., Carbondale, CO 81623
STREET ADDRESS OF RESIDENCE: 4156 Crystal Bridge Dr. Carbondale, CO 81623
TELEPHONE: (Work) 970-928-5484 (Home) 816-289-1322
OTHER PHONE: _____ E-MAIL: ben@balkamhagreen.com

INDICATE WHERE YOU WOULD LIKE YOUR AGENDAS AND INFORMATIONAL MATERIALS DELIVERED:

My home address or email

(If you are seeking reappointment, it is only necessary to fill in your name and those informational items which have changed since you were last appointed.)

BOARD OR COMMISSION FOR WHICH (RE) APPOINTMENT IS SOUGHT:

Parks & Recreation Commission

NEW APPOINTMENT ONLY:

Describe any special knowledge, abilities, background or interests which you feel will provide a positive contribution to the goals and purposes of the board or commission for which you are seeking appointment. (Attach resume if desired or use an extra sheet of paper if necessary.)

Please see my resume attached. I have been a practicing attorney for almost a decade. Throughout that time, I have served on numerous boards, commissions, and committees. I enjoy serving my community. Through my experience, I believe I have much to contribute.

Signature

Date

8/2/17

CONGRATULATIONS! The _____ has appointed you to the _____ by official action taken on _____. Your term will expire _____.

We greatly appreciate your interest and participation in the municipal government process.

Mayor and Board of Trustees
Town of Carbondale

BENJAMIN M. JOHNSTON

4156 Crystal Bridge Dr.
Carbondale, CO 81623

Mobile: (816) 289-1322
ben@balcombgreen.com

EDUCATION

- The University of Missouri-Columbia, School of Law, Juris Doctorate** (2005-2008)
- Dean's List (2006-2008)
 - Law Review, Associate Editor (*see website for publications*) (2007-2008)
- William Jewell College, B.S., Business Administration** (2001-2005)
- Dean's List (2002-2005)
 - Varsity Football, Team Captain (2004)
 - Harlaxton College – Study abroad program in Grantham, England (Spring 2004)

WORK HISTORY

- Balcomb & Green, P.C., Attorney** (2015-Present)
- Managed all types of litigation from initial complaint through discovery, depositions, motion practice, trials, settlements, and appeals.
 - Guided clients through various transactional matters, including real estate transactions, mergers and acquisitions, and corporate formation.
- Shook, Hardy & Bacon LLP, Attorney** (2011-2015)
- Counseled corporate and individual clients through complex civil litigation in federal and state courts across the country, with an emphasis on high-exposure commercial and products liability disputes.
 - Drafted legal filings, including class certification briefing, dispositive motions, pre-trial motions, jury instructions, post-trial motions, and appellate briefing.
- Supreme Court of Missouri, Judicial Clerk for Chief Justice William Ray Price, Jr.** (2010-2011)
- Assisted in preparing the Chief Justice's majority, concurring and dissenting opinions.
 - Performed initial merits analysis of applications for transfer, writs of mandamus, writs of prohibition, and writs of habeas corpus.
- Circuit Attorney's Office for the City of St. Louis, Special Assistant Circuit Attorney** (2010)
- Prosecuted bench trials, preliminary hearings, civil commitment hearings, arraignments, and second-chaired multiple jury trials on behalf of the State.
- Hunton & Williams LLP, Attorney** (New York, NY; 2006-2009)
- Counseled Fortune 10 companies and their boards of directors regarding filing and disclosure obligations under U.S. securities laws, compliance with New York Stock Exchange and SEC regulations, and corporate governance matters.
 - Advised issuers and underwriters in connection with, and coordinated the closings of, over \$14.25 billion in aggregate foreign and domestic public debt issuances, contributing to a capital markets practice honored by Thomson Reuters in 16 relevant categories (3rd in US IPOs and Global IPOs by US issuers).

Admitted to Practice law in: Colorado, New York, Missouri, U.S. District Court for the Western District of Missouri, and U.S. Courts of Appeals for the Fourth Circuit.

CIVIC ENGAGEMENT AND ASSOCIATIONS

- 9th Dist. of Co. Bar Association, Vice-President** (2015-Present)
- Colorado Bar Association, YLD Executive Council** (2015-Present)
- The American Bar Association, Co-chair of Consumer Litigation Subcommittee** (2014-Present)
- Roaring Fork Young Professional Association, Member** (2015-Present)
- Roaring Fork Leadership Academy, Board Member** (2015-Present)
- The Missouri Bar, Vice-Chair of Tort law committee** (2010-2011)
- AmeriCorps, Education Department Teacher** (2009-2010)
- Big Brothers Big Sisters, Big Impact Group** (2007-2015)

HONORS

- Super Lawyers' Rising Star** (2015-Present)
- Corporate America Legal Elite** (2015)
- National Trial Lawyers' Top 40 under 40** (2015-Present)

PUBLICATIONS

Author of various publications. Please see website for exhaustive list.