

# Carbondale Tree Board EAB Informational & Planning Meeting

July 20<sup>th</sup>, 2023

Town Hall



## THE DENVER POST

Monday, July 17, 2023

\$3.00

FACEBOOK.COM/DENVERPOST

TWITTER.COM/DENVERPOST

High: 98 Low: 70 » A14

denverpost.com

COLORADO



KELSEY BRUNNER — SPECIAL TO THE DENVER POST

Town arborist Carl Meinecke measures the diameter of an ash tree in a residential neighborhood in Carbondale on June 12. Meinecke was collecting data to update the inventory of ash trees in public rights of way and parks.

## Emerald ash borer now hits the Western Slope

Evidence of the tree-devouring beetle was found in Carbondale in June

By John Aguilar  
jaguilar@denverpost.com

this month by state officials, is the first sign that the borer has migrated to Colorado's Western Slope, most likely by hitching a ride on firewood transported



CLIMATE CHANGE

## Disaster proof homes sought

Geodesic domes, other resilient designs are gaining new attention

By Christopher Flavelle  
The New York Times

John duSaint, a retired ware engineer, recently bought property near Bishop, Calif., in a rugged valley east of the Sierra Nevada. The area is at risk of wildfires, severe daytime heat and high winds — and heavy winter snowfall.

But duSaint isn't worried. He's planning to live in a

The 29-foot structure is coated with aluminum paint, which reflects heat and is also fire-resistant. Because the dome has less surface area than a rectangular house, it is easier to insulate against the cold. And it can withstand high winds and heavy snow.

PRESIDENCY

## Trump, are working to increase office's power

By Jonathan Swan, Charlie Savage and Maggie Haberman  
The New York Times

Donald Trump and his

# Meeting Goals

- Provide information about EAB for various boards, commissions, the public, and surrounding communities
- Provide the opportunity for Q&A after presentations
- Presenters include
  - Carl Meinecke – Town Arborist – Carbondale
  - Melissa Schreiner – Entomologist – CSU Extension
  - Chris Beiser – Town Arborist – Basalt
- Future meetings will focus on
  - Reviewing recommendations from various boards, commissions, and the public
  - Landing on a management plan that meets our communities' values
  - Presentation of proposed EAB Management Plan to the Board of Trustees
  - Approval of a Management Plan by Trustees



# EAB Initial Detection

---

Carl Meinecke – Town  
Arborist

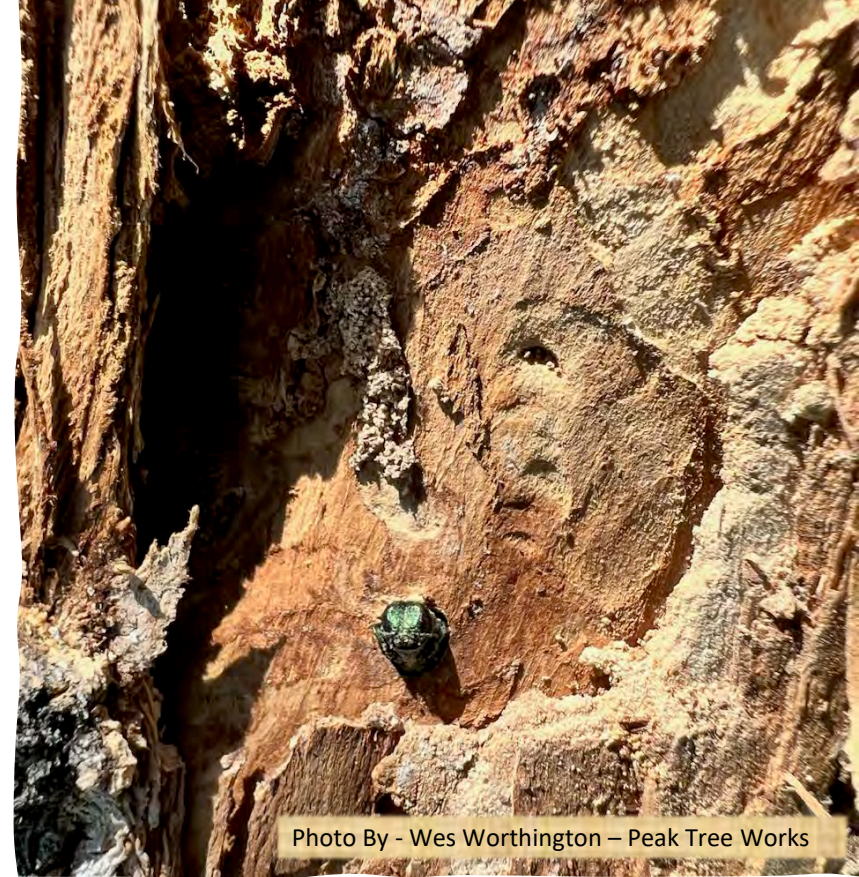


Photo By - Wes Worthington – Peak Tree Works





# Area 1

- Alerted to dead trees in front of the post office.
- I found d-shaped exit holes.
- Maybe I'm just seeing things
- Suspicious





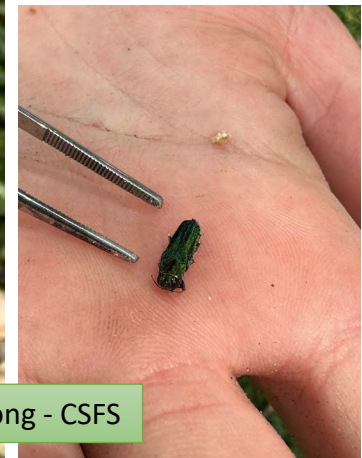
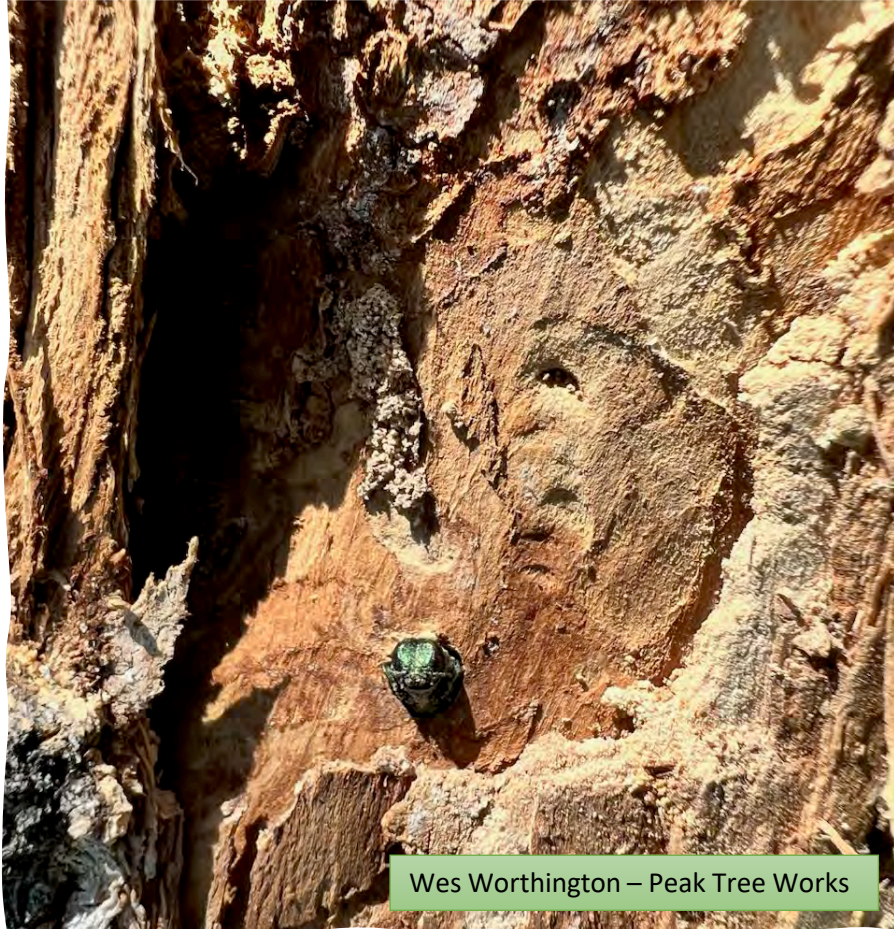
# Area 2

- Climbed a tree in the ROW that showed significant decline from last year and took a sample for further inspection to the shop.
- Found d-shaped exit holes and s-shaped galleries.
- This started a chain of communications to confirm or deny the presence of EAB in Carbondale.





# EAB Pictures



# Chain of Events and Actions

- Initially detected on June 15<sup>th</sup>
- Confirmed on June 16<sup>th</sup> by Colorado State University
- Press Release on June 20<sup>th</sup>
- Initiated the creation of the Roaring Fork & Beyond EAB Group and met via Zoom on June 29<sup>th</sup>.
  - Made up of municipal arborist in the valley, local tree companies, and the state
- Key initial actions agreed upon from the meeting.
  - Don't transport firewood, burn and collect on site
  - Limit movement of infected material between May – August
  - South Canyon & Pitkin County landfills are designated disposal points
  - All suspected EAB infections should be reported to local municipal arborist

# Current Actions

- Creating a map of infected areas to be available to the public.
- Creating a more specific map for tree professionals as it moves from public and private properties.
- Gathering data on current public ash trees to update the diameter, general condition, treatability, presence of EAB, and declaration as a High Value Ash.
- Create opportunities for various boards, commissions, and the public to learn and ask questions about EAB and provide input for management planning.



# Current Actions Cont.

- Education to the public and contractors.
- Create a management plan that reflects our communities' values and the management of EAB in Carbondale.
- Purchasing a chipper to help process material.

symptoms such as sparse tree canopy, lost limbs. You may notice only partially defoliated leaves stay small all season.

Look for:

• Lack of new branches just above area of infestation. Growth from bottom of the tree look abnormally thriving.

• Shavings of bark from branches; may be littered with bark.

• Bark may expose "S" shaped patterns on the inner wood.

• "J" shaped exit holes on the bark where adults have emerged.



Signs of adult beetle

## LOCAL GOVERNMENT ACTIONS

The Arborists of Roaring Fork Valley are working together to monitor and reduce the spread of EAB locally. Each town's response and resources offered to homeowners may differ; however, the following guidelines are encouraged throughout the Valley:



Canopy dieback on infested Ash

- Movement of ash logs for firewood is prohibited. Please burn on site only and obey all fire restrictions in place.
- During **May thru August**, the movement of Ash chips and logs is prohibited including movement for disposal.
- South Canyon and Pitkin County landfills are approved disposal points for infested chips/logs (during non-flight months).
- All suspected EAB infestations should be reported to your local Municipal Arborist.



Bark scraped away to reveal the "S" shaped feeding gallery in the wood

## WHAT YOU CAN DO

Tracking the spread of EAB is a community effort! The most important measure you can take is to report your privately owned Ash tree if you suspect your tree is infested. Please reach out to your local Municipal Arborist or an ISA Certified Arborist immediately for identification. **PLEASE DO NOT WAIT TO REPORT SUSPICIOUS TREES!**

If you have a healthy Ash tree on your property, it is critical to keep it healthy through recommended care and maintenance guidelines. This will improve response to EAB and mitigate the impact of pests. Several preventative treatments are available. Use the QR code on the flyer or reach out to an ISA Certified Arborist to learn your treatment options.

# Ash Trees in Carbondale Public Spaces

- Roughly 10% of our public tree canopy at around 400 trees
  - Park Trees
  - Trees in the ROW or Street Trees
- Some areas were densely planted with ash trees
  - Main & 4<sup>th</sup> plus the Plaza
  - Stretches along the ROW in River Valley Ranch (RVR)



What is a High Value Ash  
Tree?

# High Value Ash Trees

- All trees provide value in their cycle of life from seedlings to decomposition.
- The complex interaction of ash trees in our urban environment plus the emergence of EAB forces us to make declarations about the value of ash trees.
- Therefore, characteristics of a High Value Ash tree must be agreed upon when deciding what specific trees to focus our management on.
- Trees that are not treated will eventually die from EAB over a period of 2-4 years.



# High Value Ash – Characteristics

- Good Condition & Vigorously Growing
- Good overall Structure
- Receiving Consistent Irrigation
- Enhance the Landscape
- Valuable to the Owner
- Location and size of tree favorable for treatment options
- No large trunk wounds from mowers, weed whackers, or vehicles
  - Good intact bark is imperative for trunk injections
- 60% live crown and no more than 40% effected by EAB

# Not High Value – Characteristics

- Unhealthy, not vigorously growing each year
- Unfavorable tree Structure
- Planted in poor sites or are not as important to the landscape
- Causing sight line or public safety issues
- Don't receive consistent irrigation
- Suppressed by surrounding trees
- Showing many outward signs of EAB or other insect infestations
- Large trunk wounds present
- More than 40% crown effected by EAB





---

## High Value?

- Good Condition
- Consistent Irrigation
- Enhances the landscape
- Valuable to Sopris Parks
- No signs of EAB yet
- Yes High Value





---

## High Value?

- Less favorable tree structure
- Receives consistent irrigation
- Suppressed by surrounding trees
- No signs of EAB yet
- Not High Value



---

## High Value?

- 60% live crown and no more than 40% effected by EAB
- ?





---

## Not High Value

- Poor site
- Likely not getting good irrigation
- Water is needed for chemical uptake into the tree







## Street Tree Issues

- General decline over the years
- Tree Gates have been slowly beginning to girdle some trees over the course of many years
- Leaf scorch



# Some Aspects to Consider

- What trees to focus management on?
- Are all trees treatable?
- Cost of various management actions
- Risk of using insecticides
- Short vs Long term management
- EAB's effect on Carbondale & the Surrounding Communities
- What have other towns done?
- What do we know is effective management?
- Can we stop EAB?
- What can homeowners do to Help?



Photo By – Kamie Long - CSFS