

**CARBONDALE PARKS & RECREATION COMMISSION
REGULAR MEETING
WEDNESDAY, July 13, 2022 7:00 P.M.
Carbondale Town Hall Trustee Chambers**

<u>TIME*</u>			<u>ITEM</u>	<u>DESIRED OUTCOME</u>
7:00		1.	Roll Call	
7:05		2.	Approval of June 8, 2022 Minutes	INFORMATIONAL
7:10		3.	Items from Citizens Present Not on the Agenda	
7:20		4.	Review / debrief of park assessment tool	INFORMATION (Attachment A)
7:40		5.	4th Street Plaza Park Preliminary visioning, discussion, and ranking of visions	INFORMATION DISCUSSION DECISION (Attachment B)
7:55		6.	Draft 5- year Capital Improvement Plan	INFORMATION DISCUSSION (Attachment C)
8:10		7.	Aquatics Facility Master Plan -Next Steps Timeline for bond underwriters Aspen Community Foundation	INFORMATION (Attachment D)
8:20		8.	Nominations for Officers 2023	INFORMATION DISCUSSION DECISION (Attachment E)
8:35		10.	Report & Updates: Staff & Commission Members <ul style="list-style-type: none"> Eric Brendlinger, Parks & Recreation Director Budget Priority Goals worksheets 30/60/90 Day Outlook Jessi Rochel, Rec Center Manager Parks & Recreation Commissioners Luis Yllanes, Trustee Liaison 	INFORMATION (Attachment F)

9:00		10.	Adjournment*	*Please note: Times are approximate
------	--	-----	--------------	-------------------------------------

Town parks assessment tool park selection

<u>Park #</u>	<u>P& R, Staff or Volunteer</u>	<u>Park Name</u>
1	Hollis	Bonnie Fisher Park
2	John Williams	Carbondale Nature Park
3		Centennial Sundial Park
4	Less Keary	Colorado Meadows Park
5		Gateway RV and River Park
6		Gateway Park
7	Susan	Gianinetti Park
8	John Williams	Glassier Park
9	y	Gus Darien Riding Arena + Ice Rink
10	Susan	Hendrick Dog Park
11	Susan	Hendrick Park
12	Hollis	Ramey-Harvey Park
13	y	Keator Grove Park
14	Drew	Miner's Memorial Park
15	John Williams	Jail & Cabin History Park
16	Eric	North Face Park
17	Eric	Nuche Park
18	Misha	Orchard Park
19	x	Recreation & Community Center/Promenade Park
20	x	Crystal River Riverfront Parks
21	Susan	Sopris Park
22	Hollis	Stairway Park
23	Eric	The Plaza/Park at 4th and Main Street
24	John Williams	Thompson Park
25	susan	Triangle Park

Modified DRAFT Assessment Tool

WORKING DRAFT 6/3/2022

Glassier Park

Park Name/Park Purpose/Amenities Present	YES (check in box if Park does have)	NO (check in box if Park does not have)	What is the level of priority of need if applicable? (1 - immediate, 2 - short-term, 3 - long-term)	Responses to questions (write in any comments/suggestions)
(Fill in name of park for this assessment)				
(Fill in purpose of this park)				off-leash dog park, horse shoes
(Fill in general description of park)				
(Describe general condition / visible improvements needed)				Sand pit improvement, sidewalks/crosswalk
General				
Access				
Nearby streets have signage with directions to park		✓		
Presence of bike racks		✓		
ADA parking quantities meet Town code		✓		
Accessible spots are clearly marked with surface paint and signage		✓		
Loading/Drop-off area is curbside or has a single short curb				
Direct and clear barrier-free route from parking lot to outdoor space and its amenities	✓			
Sidewalks connect park to the surrounding area for walkability		✓		
Presence of a bus stop near park				
Covered or shaded seating area near loading zone/drop-off area	✓			Trees
Parking has sufficient lighting for facilities open past dark	✓			street parking
All light sources are baffled so lighting is focused down on walking path (Dark Sky compliant)	✓			
Restrooms				
Open and usable year-round	✓	✓		Next door @ Jail Cabin Park
If no permanent bathroom present or not open year-round, portable toilets are provided year-round	✓			
If no permanent bathroom present or not open year-round, portable toilets are provided seasonally	✓			
If portable toilets are provided, they are sited properly for accessibility (from parking areas, free of step to get in/out, etc.)	✓			
Large enough to accommodate wheelchairs and walkers (minimum 60 inches)				Unsure - check w/ Jail Cabin Park
Has ADA stalls (# of stalls)				Quantity:
Door to facility is easily operable (i.e. not too heavy, easy to use handle, clear space at door swing)				
Stall doors are easily operable (i.e. self-closing hinges, easy to use handles and locks, clear space at door swing)				
Has toilets to accommodate young children				
Has non-slip flooring				
Restroom is visibly regularly maintained/cleaned				
At least one child changing table present				
Presence of a family bathroom				
Presence of a non-gender bathroom				
Stalls have hooks to hang a cane or bags				
Presence of a height-adjustable changing table that can accommodate adult weight				
Hand washing/sanitizing area present and accessible				
Drinking Fountains				
Presence of seasonal working water fountains and/or bottle filling stations		✓		
Fountain/filling station is universally accessible (children, wheelchairs, etc.)		✓		
Well drained/no water pooling around fixture		N/A		
Easily operable		N/A		
Water source for dogs	✓			Ditch
Trash Receptacles				
Presence of wildlife resistant trash receptacles throughout the park (# of receptacles?)	✓			Quantity: 1
Presence of recyclable receptacles throughout the park (# of receptacles?)	✓			Quantity: 1

Glassier

Trash is visibly regularly maintained/picked up	✓		
Dog waste bags are provided	✓		
Dog pots are provided	✓		Quantity: 1
Are any trash, recyclable, or dog waste pots needed? If so, where?	✓		Response: One @ either end might be helpful
SEATING			
Benches	← confusing to then have separate category		
Presence of benches or seating throughout	✓		3
How many benches are in park?			Quantity: 3
Seating is accessible by firm path		✓	All grass
Presence of a clear ground space that is 36 by 48 inches and adjacent to one end of each bench for wheelchair users	✓		Clear but grass
Seating has appropriate sized backs and armrests to provide support and facilitate getting up		✓	Picnic benches only
How many feet between benches along main paths?	Unknown		Response: Tables are always in different spot
Surface material of bench does not retain excessive heat and is free of splinters	✓		Response: Plastic covered metal
What type of material is the bench surface?	✓		
Seating is provided in sun and shade	✓		
Are more benches needed in this park? (size of park versus seating options provided seem adequate?)		✓	
Picnic Tables	— see above		
How many picnic tables are available?			Quantity:
Picnic tables are accessible by firm paths			
The park has at least one wheelchair accessible picnic table			
There are tables available with multiple wheelchair accessible spaces			
Constructed of heat resistant and splinter resistant material			
What type of materials is the table constructed of?			Response:
Shade / Covering Provided			
Are more picnic tables needed in this park? (size of park versus table options provided seem adequate?)			
Landscaping			
Additional Features			
Presence of flat grassy open area for low-impact exercise	✓		
Ground surface is maintained to reduce tripping hazards (i.e. grass areas are properly maintained and healthy)	✓	✓	lots of protruding roots
Irrigation is in maintained order	✓		
Park has designated quiet or low-activity areas		✓	
Presence and maintenance of art/sculptures	✓		has been the same for many years
Trees and Vegetation			
The parks are nicely vegetated and maintained where appropriate to support shade, habitat diversity, heat island cooling, stormwater management, etc.	✓		
Presence of canopy trees that provide shade	✓		
There is diversity in the tree species of the park	✓		
Vegetation provides habitat opportunities for the town's diverse wildlife populations	✓		
Plants in high activity areas are non-toxic and non-injurious such as not having thorns	✓		
Landscaping is attractive and well maintained	✓	✓	Very simple
Native and drought resistant plants support pollinators and wildlife	✓		
Does this park lend itself to the addition of more trees?		✓	
Community Gardens			
Presence of well-maintained garden beds and pathways		✓	
Signage near garden includes rules, instructions and plot rental information		N/A	
Gardening area has seating both in sun and shade			
Garden has easy to access water source and is accessible for wheelchairs			
Garden has an easy to access shed with gardening tools and materials			
Garden beds are accessible by a firm pathway			
Raised garden beds are at varying heights from ground to accommodate seated and standup gardening			
Paths			
Sidewalks			
Sidewalks/Pathways are free of cracks and potholes	N/A		None present

Combine

Combine

Glassier

Sidewalks/Pathways are free of ground level obstructions and tripping hazards: roots, pebbles, leaves, sticks, seeds, etc.				
Sidewalk / Pathway surfacing is of a firm material				
Free of overhead obstructions such as tree branches				
Sidewalk / Pathway is a minimum of 3 feet wide				
Sidewalk / Pathway exceeds 3 feet in width				
How wide is the sidewalk / pathway?				Response:
Surface is non-slip				
Park has a continuous pathway that loops and does not lead to dead-ends				
Presence of quarter-mile distance markers				
Both firm and soft surface options are offered				
Stairs & Inclines				
Are stairs present in this park?		✓		
Stair risers are consistent in height				
Is the height of the stair riser comfortable? If not, how high is it?				Response:
Handrails / guardrails are provided for any stairs, ramps, and inclines				
Handrails are comfortable (temperature, grip, etc.). If no, why not?				Response:
If stairs are present, a ramp is also available as an option for traversing inclines				
Are stairs needed in this park? If so, where?				Response:
Nature Trails				
Users are able to experience nature on a trail with a reasonable grade	✓	✓		not on a trail but w/in park
Users are able to experience nature on a hard surfaced trail		✓		
At least one trail is specifically designed to be accessible		✓		
Free of excessive debris such as loose sticks or rocks		N/A		
Is maintained and free of erosion or divots				
Is a minimum of 3 feet wide				
Trail is constructed of crushed rock or packed dirt rather than uncrushed gravel or round rocks				
Amenities and Features				
Playgrounds				
Playground is friendly for 0-5 year olds				None
Playground is friendly for 5-12 year olds				
Multi-generational activities are present				
Restroom is in close proximity	✓			
Good sightlines from benches				
Surfacing material is at a proper and adequate depth				
Shade is present within the playground				
Accessible activities are present				
Playground is approachable from parking via an accessible path				
Exercise Stations				
Park lends itself to having exercise station	✓			
Presence of exercise stations			✓	
Exercise stations have soft surface in case of falls		N/A		
Equipment is easily accessible from a path		N/A		
Instructions with visuals accompany each piece of exercise equipment		N/A		
Has low-impact exercise machines		N/A		
Dog Parks				
Dog rules are posted in park	✓			
Dog agility features are present			✓	
Water Areas (boat launch/ponds/ditches/river front)				
Presence and healthy maintenance of water features/water sources	✓			
Universal access to water provided	✓			
Benches present			✓	
Accessible fishing area provided (Fishing is Fun)			✓	
Fishing access allowed			✓	
Signage present for rules/regulations/warnings			✓	
Boat Launch / watercraft access			✓	
Other General Amenities				
Presence of specialized recreation facilities for older adults (i.e. pickleball courts, exercise equipment, etc.)			✓	
Presence of space for group gatherings	✓			

6/4/2015

What additional amenities would this park benefit from?	✓		Response: Bench by water, dog features,
Quiet calm areas can be found in park	✓		exercise equipment (2)
Navigation			
Signage and Wayfinding			
A map of the park's layout is provided at the entrance	✓		
Rules and regulations are posted	✓	✓	Only for dogs, not park generally
Interpretive signs are present in the park		✓	
Wayfinding signs pointing to important locations (i.e. restrooms, features) are present throughout the park, especially where paths cross		✓	
Visible "Park Identification Sign" with the park name to mark entrances	✓		
Park is clearly defined as a "Town of Carbondale" park open to all	✓	✓	Has seal on sign
Are more park signs needed? If so, what kind and where?	✓		Response: Horseshoe area,
All park signage is legible (readable font characters and size)	✓		
High contrast between characters and the background color	✓		
Signage is consistent throughout the park	✓	✓	
Signage is universal through graphics and visuals	✓		
Signage is distinct from its surrounding environment such as not having a green sign amidst greenery		✓	Shrub is blocking sign approaching from North
Educational signs such as plant labels and those with historical information are provided throughout the park		✓	
Bi-lingual signs are offered		✓	
All signs have a braille offering or accompaniment (separate signs with braille at ground-level)		✓	
Maps (either paper or permanent) are provided at several locations throughout the park		✓	
A map of the park's layout is available online for visitors to view or print prior to visiting the park		✓	Google maps does not have park
Parking areas, restrooms, and major site features and amenities are clearly identified in mapping		✓	
Online information is consistent with onsite signage		✓	More online
Contact information for park management and maintenance is posted both at the park and online		✓	Not @ park
Information on park rentals are identified and signed with current rental information		✓	
Operations and Maintenance			
Maintenance			
Park does not have excessive litter or animal droppings	✓		
Park does not have graffiti	✓		
Has a posted process for park users to make maintenance requests		✓	
Safety			
Park has open design and sightlines throughout	✓		
Park hours are posted at all entrances		✓	
Park is free of high walls (8-10 feet) or other obstructions that block visibility	✓		
Shrubbery is well-maintained to prevent people from hiding in them		✓	what does this mean? Higher density?
If a park is open after dusk, sufficient pathway lighting is provided to navigate		✓	

Notes:

- More space for comments, open-ended answers
- Measure of how many people could use park at once
- Very small category for rating sports amenities (fields, courts, sand courts)
- Ability to combine lines i.e. Family bathroom, changing table

Modified DRAFT Assessment Tool

WORKING DRAFT 6/3/2022

Ramen. Harvey

Park Name/Park Purpose/Amenities Present	YES (check in box if Park does have)	NO (check in box if Park does not have)	What is the level of priority of need if applicable? (1 - immediate, 2 - short-term, 3 - long-term)	Responses to questions (write in any comments/suggestions)
(Fill in name of park for this assessment)				
(Fill in purpose of this park) Passive Park				
(Fill in general description of park) 1/2 acre pocket park				
(Describe general condition / visible improvements needed) Good				
General				
Access				
Nearby streets have signage with directions to park		X		
Presence of bike racks		X		
ADA parking quantities meet Town code		X		
Accessible spots are clearly marked with surface paint and signage		X		
Loading/Drop-off area is curbless or has a single short curb		X		
Direct and clear barrier-free route from parking lot to outdoor space and its amenities		X		
Sidewalks connect park to the surrounding area for walkability	✓			
Presence of a bus stop near park		X		
Covered or shaded seating area near loading zone/drop-off area	✓			
Parking has sufficient lighting for facilities open past dark		X		
All light sources are baffled so lighting is focused down on walking path (Dark Sky compliant)		X		
Restrooms				
Open and usable year-round		X		
If no permanent bathroom present or not open year-round, portable toilets are provided year-round		X		
If no permanent bathroom present or not open year-round, portable toilets are provided seasonally		X		
If portable toilets are provided, they are sited properly for accessibility (from parking areas, free of step to get in/out, etc.)		X		
Large enough to accommodate wheelchairs and walkers (minimum 60 inches)		X		
Has ADA stalls (# of stalls)		X		Quantity:
Door to facility is easily operable (i.e. not too heavy, easy to use handle, clear space at door swing)		X		
Stall doors are easily operable (i.e. self-closing hinges, easy to use handles and locks, clear space at door swing)		X		
Has toilets to accommodate young children		X		
Has non-slip flooring		X		
Restroom is visibly regularly maintained/cleaned		X		
At least one child changing table present		X		
Presence of a family bathroom		X		
Presence of a non-gender bathroom		X		
Stalls have hooks to hang a cane or bags		X		
Presence of a height-adjustable changing table that can accommodate adult weight		X		
Hand washing/sanitizing area present and accessible		X		
Drinking Fountains				
Presence of seasonal working water fountains and/or bottle filling stations		X		
Fountain/filling station is universally accessible (children, wheelchairs, etc.)		X		
Well drained/no water pooling around fixture		X		
Easily operable		X		
Water source for dogs		X		
Trash Receptacles				
Presence of wildlife resistant trash receptacles throughout the park (# of receptacles?)	✓			Quantity:
Presence of recyclable receptacles throughout the park (# of receptacles?)	✓			Quantity:

Ramsey / Harvey

Sidewalks/Pathways are free of ground level obstructions and tripping hazards: roots, pebbles, leaves, sticks, seeds, etc.	✓			
Sidewalk / Pathway surfacing is of a firm material	✓			
Free of overhead obstructions such as tree branches	✓			
Sidewalk / Pathway is a minimum of 3 feet wide	✓			
Sidewalk / Pathway exceeds 3 feet in width	35' ✓			
How wide is the sidewalk / pathway?	35' ✓			Response:
Surface is non-slip	✓			
Park has a continuous pathway that loops and does not lead to dead-ends		✓		
Presence of quarter-mile distance markers		✓		
Both firm and soft surface options are offered		✓		
Stairs & Inclines N/A				
Are stairs present in this park?				
Stair risers are consistent in height				
Is the height of the stair riser comfortable? If not, how high is it?				Response:
Handrails / guardrails are provided for any stairs, ramps, and inclines				
Handrails are comfortable (temperature, grip, etc.). If no, why not?				Response:
If stairs are present, a ramp is also available as an option for traversing inclines				
Are stairs needed in this park? If so, where?				Response:
Nature Trails N/A				
Users are able to experience nature on a trail with a reasonable grade				
Users are able to experience nature on a hard surfaced trail				
At least one trail is specifically designed to be accessible				
Free of excessive debris such as loose sticks or rocks				
Is maintained and free of erosion or divots				
Is a minimum of 3 feet wide				
Trail is constructed of crushed rock or packed dirt rather than uncrushed gravel or round rocks				
Amenities and Features				
Playgrounds N/A				
Playground is friendly for 0-5 year olds				
Playground is friendly for 5-12 year olds				
Multi-generational activities are present				
Restroom is in close proximity				
Good sightlines from benches				
Surfacing material is at a proper and adequate depth				
Shade is present within the playground				
Accessible activities are present				
Playground is approachable from parking via an accessible path				
Exercise Stations N/A				
Park lends itself to having exercise station				
Presence of exercise stations				
Exercise stations have soft surface in case of falls				
Equipment is easily accessible from a path				
Instructions with visuals accompany each piece of exercise equipment				
Has low-impact exercise machines				
Dog Parks N/A				
Dog rules are posted in park				
Dog agility features are present				
Water Areas (boat launch/ponds/ditches/river front) N/A				
Presence and healthy maintenance of water features/water sources				
Universal access to water provided				
Benches present				
Accessible fishing area provided (Fishing is Fun)				
Fishing access allowed				
Signage present for rules/regulations/warnings				
Boat Launch / watercraft access				
Other General Amenities N/A				
Presence of specialized recreation facilities for older adults (i.e. pickleball courts, exercise equipment, etc.)				
Presence of space for group gatherings				

Raney/Harvey

Water Fountain

What additional amenities would this park benefit from?	Water Fountain				Response:
Quiet calm areas can be found in park	✓				
Navigation					
Signage and Wayfinding					
A map of the park's layout is provided at the entrance		✓			
Rules and regulations are posted		✓			
Interpretive signs are present in the park		✓			
Wayfinding signs pointing to important locations (i.e. restrooms, features) are present throughout the park, especially where paths cross		✓			
Visible "Park Identification Sign" with the park name to mark entrances	✓				
Park is clearly defined as a "Town of Carbondale" park open to all	✓				
Are more park signs needed? If so, what kind and where?	✓				Response:
All park signage is legible (readable font characters and size)	✓				So people can find from
High contrast between characters and the background color	✓				main
Signage is consistent throughout the park	✓				through
Signage is universal through graphics and visuals	✓				sign
Signage is distinct from its surrounding environment such as not having a green sign amidst greenery	✓				
Educational signs such as plant labels and those with historical information are provided throughout the park		✓			
Bi-lingual signs are offered		✓			
All signs have a braille offering or accompaniment (separate signs with braille at ground-level)		✓			
Maps (either paper or permanent) are provided at several locations throughout the park		✓			
A map of the park's layout is available online for visitors to view or print prior to visiting the park		✓			
Parking areas, restrooms, and major site features and amenities are clearly identified in mapping		✓			
Online information is consistent with onsite signage		✓			
Contact information for park management and maintenance is posted both at the park and online		✓			
Information on park rentals are identified and signed with current rental information		✓			
Operations and Maintenance					
Maintenance					
Park does not have excessive litter or animal droppings		✓			
Park does not have graffiti		✓			
Has a posted process for park users to make maintenance requests		✓			
Safety					
Park has open design and sightlines throughout		✓			
Park hours are posted at all entrances		✓			
Park is free of high walls (8-10 feet) or other obstructions that block visibility	✓				
Shrubbery is well-maintained to prevent people from hiding in them	✓				
If a park is open after dusk, sufficient pathway lighting is provided to navigate	NA				

Modified DRAFT Assessment Tool

WORKING DRAFT 6/3/2022

2/1/2022 33 MINUTES
HOLLIS

Park Name/Park Purpose/Amenities Present	YES (check in box if Park does have)	NO (check in box if Park does not have)	What is the level of priority if need it applicable? (1 - immediate, 2 - short-term, 3 - long-term)	Response to questions (write in any comments/suggestions)
(Fill in name of park for this assessment)				
STAIRCASE				
(Fill in purpose of this park)				
PASSIVE RIVER ACCESS "NATURAL" PARK				
(Fill in general description of park)				
GOOD - SHORE EROSION HAPPENING				
(Describe general condition / visible improvements needed)				
General				
Access				
Nearby streets have signage with directions to park				
Presence of bike racks				
ADA parking quantities meet Town code				
Accessible spots are clearly marked with surface paint and signage				
Loading/Drop-off area is curbside or has a single short curb				
Direct and clear barrier-free route from parking lot to outdoor space and its amenities				
Sidewalks connect park to the surrounding area for walkability				
Presence of a bus stop near park				
Covered or shaded seating area near loading zone/drop-off area				
Parking has sufficient lighting for facilities open past dark				
All light sources are baffled so lighting is focused down on walking path (Dark Sky compliant)				
Restrooms				
Open and usable year-round				
If no permanent bathroom present or not open year-round, portable toilets are provided year-round				
If no permanent bathroom present or not open year-round, portable toilets are provided seasonally				
If portable toilets are provided, they are sited properly for accessibility (from parking areas, free of step to get in/out, etc.)				
Large enough to accommodate wheelchairs and walkers (minimum 60 inches)				
Has ADA stalls (# of stalls)				
Door to facility is easily operable (i.e. not too heavy, easy to use handle, clear space at door swing)				
Stall doors are easily operable (i.e. self-closing hinges, easy to use handles and locks, clear space at door swing)				
Has toilets to accommodate young children				
Has non-slip flooring				
Restroom is visibly regularly maintained/cleaned				
At least one child changing table present				
Presence of a family bathroom				
Presence of a non-gender bathroom				
Stalls have hooks to hang a cane or bags				
Presence of a height-adjustable changing table that can accommodate adult weight				
Hand washing/sanitizing area present and accessible				
Drinking Fountains				
Presence of seasonal working water fountains and/or bottle filling stations				
Fountain/filling station is universally accessible (children, wheelchairs, etc.)				
Well drained/no water pooling around fixture				
Easily operable				
Water source for dogs				
Trash Receptacles				
Presence of wildlife resistant trash receptacles throughout the park (# of receptacles?)				
Presence of recyclable receptacles throughout the park (# of receptacles?)				

AT TOP OF STAIRS
PARKING

DEFINITELY LENDS ITSELF TO BRAT

NA - NOT AN ADA ACCESSIBLE PARK

NO PARKING LOT LIMITED STREET

NO RESTROOMS OR PORTA POTTIES

RIVER

Staircase

Trash is visibly regularly maintained/picked up				
Dog waste bags are provided				
Dog pots are provided				
Are any trash, recyclable, or dog waste pots needed? If so, where?	✓	✓		THERE SHOULD BE - PEOPLE WALK DOGS HERE Response: TOP OF STAIRS OR BOTTOM OF STAIRS

SEATING

Benches

Presence of benches or seating throughout		✓	1	
How many benches are in park?				Quantity: 0
Seating is accessible by firm path				
Presence of a clear ground space that is 36 by 48 inches and adjacent to one end of each bench for wheelchair users	NA	✓		
Seating has appropriate sized backs and armrests to provide support and facilitate getting up				
How many feet between benches along main paths?				Response:
Surface material of bench does not retain excessive heat and is free of splinters				
What type of material is the bench surface?				Response:
Seating is provided in sun and shade				
Are more benches needed in this park? (size of park versus seating options provided seem adequate?)	✓			CONSIDER BENCHES NEAR RIVER

Picnic Tables

How many picnic tables are available?	✓			Quantity: 1
Picnic tables are accessible by firm paths		✓		
The park has at least one wheelchair accessible picnic table		✓		THIS IS NOT A WHEELCHAIR ACCESSIBLE PARK
There are tables available with multiple wheelchair accessible spaces		✓		
Constructed of heat resistant and splinter resistant material	✓			
What type of materials is the table constructed of?				Response: METAL IN SHADE
Shade / Covering Provided	✓			UNDER TREE
Are more picnic tables needed in this park? (size of park versus table options provided seem adequate?)				MAYBE 1 MORE

Landscaping

Additional Features

Presence of flat grassy open area for low-impact exercise		✓		NOT PURPOSE OF THIS PARK
Ground surface is maintained to reduce tripping hazards (i.e. grass areas are properly maintained and healthy)	NA			
Irrigation is in maintained order				
Park has designated quiet or low-activity areas				
Presence and maintenance of art/sculptures				NO BUT COULD CREATE MORE PLACES FOR READING, DRAWING ETC
Trees and Vegetation				
The parks are nicely vegetated and maintained where appropriate to support shade, habitat diversity, heat island cooling, stormwater management, etc.				NATURAL VEGETATION
Presence of canopy trees that provide shade	✓			SOMEWHAT
There is diversity in the tree species of the park				
Vegetation provides habitat opportunities for the town's diverse wildlife populations	✓			
Plants in high activity areas are non-toxic and non-injurious such as not having thorns	✓			SEEMS TO BE - NOT SURE IF POISON IVY OFF PATH AREA?
Landscaping is attractive and well maintained				SOMEWHAT - NATURAL
Native and drought resistant plants support pollinators and wildlife	?	?		
Does this park lend itself to the addition of more trees?	?	?		

Community Gardens

Presence of well-maintained garden beds and pathways	NA	NA		
Signage near garden includes rules, instructions and plot rental information				
Gardening area has seating both in sun and shade				
Garden has easy to access water source and is accessible for wheelchairs				
Garden has an easy to access shed with gardening tools and materials				
Garden beds are accessible by a firm pathway				
Raised garden beds are at varying heights from ground to accommodate seated and standup gardening	✓	✓		

Paths

Sidewalks

Sidewalks/Pathways are free of cracks and potholes				PEBBLES FROM RECENT HEAVY RAINS SOME UNEVEN CONCRETE SIDEWALK ON APPROACH TO STAIRWAY
--	--	--	--	---

STAIRCASE

Sidewalks/Pathways are free of ground level obstructions and tripping hazards: roots, pebbles, leaves, sticks, seeds, etc.				
Sidewalk / Pathway surfacing is of a firm material				
Free of overhead obstructions such as tree branches				
Sidewalk / Pathway is a minimum of 3 feet wide				
Sidewalk / Pathway exceeds 3 feet in width				
How wide is the sidewalk / pathway?				Response:
Surface is non-slip				
Park has a continuous pathway that loops and does not lead to dead-ends				
Presence of quarter-mile distance markers				
Both firm and soft surface options are offered				
Stairs & Inclines				
Are stairs present in this park?	✓			
Stair risers are consistent in height	✓			YES BUT SEEM CLOSER THAN "NORMAL"
Is the height of the stair riser comfortable? If not, how high is it?				Response: ↓ ↓ ↓ ↓ ↓
Handrails / guardrails are provided for any stairs, ramps, and inclines	✓			
Handrails are comfortable (temperature, grip, etc.). If no, why not?		✓		Response: GETS HOT IN SUN
If stairs are present, a ramp is also available as an option for traversing inclines		✓		
Are stairs needed in this park? If so, where?		✓		Response:
Nature Trails				
Users are able to experience nature on a trail with a reasonable grade	✓			
Users are able to experience nature on a hard surfaced trail		✓		
At least one trail is specifically designed to be accessible		✓		
Free of excessive debris such as loose sticks or rocks	✓			MORE LIKE A HIKING TRAIL
Is maintained and free of erosion or divots				THERE ARE UNEVEN SPOTS & SOME HOLES
Is a minimum of 3 feet wide		✓		
Trail is constructed of crushed rock or packed dirt rather than uncrushed gravel or round rocks		✓		
Amenities and Features				
	NA	NA		
Playgrounds				
Playground is friendly for 0-5 year olds				
Playground is friendly for 5-12 year olds				
Multi-generational activities are present				
Restroom is in close proximity				
Good sightlines from benches				
Surfacing material is at a proper and adequate depth				
Shade is present within the playground				
Accessible activities are present				
Playground is approachable from parking via an accessible path				
Exercise Stations				
Park lends itself to having exercise station				
Presence of exercise stations				
Exercise stations have soft surface in case of falls				
Equipment is easily accessible from a path				
Instructions with visuals accompany each piece of exercise equipment				
Has low-impact exercise machines				
Dog Parks				
Dog rules are posted in park				
Dog agility features are present	NA	NA		
Water Areas (boat launch/ponds/ditches/river front)				
Presence and healthy maintenance of water features/water sources		✓		NOT APPROPRIATE FOR ADA ACCESS
Universal access to water provided		✓		
Benches present		✓		
Accessible fishing area provided (Fishing Is Fun)	✓			ACCESS AVAILABLE BUT COULD MAKE MORE OFFICIAL SPOTS
Fishing access allowed		✓		
Signage present for rules/regulations/warnings		✓		
Boat Launch / watercraft access		✓		NOT APPROPRIATE FOR BOATING/TABLE BOARD
Other General Amenities				
Presence of specialized recreation facilities for older adults (i.e. pickleball courts, exercise equipment, etc.)		✓		
Presence of space for group gatherings	✓			SMALL GROUP

Staircase

What additional amenities would this park benefit from?				Response: MORE OFFICIAL SEATING + RIVER ACCESS POINTS
Quiet calm areas can be found in park	✓			BIRDWATCHING SERENE ACTIVITIES
Navigation				
Signage and Wayfinding				
A map of the park's layout is provided at the entrance		✓		
Rules and regulations are posted		✓		
Interpretive signs are present in the park		✓		
Wayfinding signs pointing to important locations (i.e. restrooms, features) are present throughout the park, especially where paths cross		UX		
Visible "Park Identification Sign" with the park name to mark entrances		✓		
Park is clearly defined as a "Town of Carbondale" park open to all		✓		
Are more park signs needed? If so, what kind and where?		NA		Response: YES IF WE WANT TO DESIGNATE THIS AS AN OFFICIAL PARK WHICH IT IS - SHOULD HAVE CONSISTANT SIGNAGE
All park signage is legible (readable font characters and size)		NA		
High contrast between characters and the background color		NA		
Signage is consistent throughout the park		NA		
Signage is universal through graphics and visuals		NA		
Signage is distinct from its surrounding environment such as not having a green sign amidst greenery		NA		
Educational signs such as plant labels and those with historical information are provided throughout the park		NA		
Bi-lingual signs are offered		NA		
All signs have a braille offering or accompaniment (separate signs with braille at ground-level)		NA		
Maps (either paper or permanent) are provided at several locations throughout the park		NA		
A map of the park's layout is available online for visitors to view or print prior to visiting the park		NA		
Parking areas, restrooms, and major site features and amenities are clearly identified in mapping		NA		
Online information is consistent with onsite signage		NA		
Contact information for park management and maintenance is posted both at the park and online		NA		
Information on park rentals are identified and signed with current rental information		NA		
Operations and Maintenance				
Maintenance				
Park does not have excessive litter or animal droppings				NOT EXCESSIVE BUT DOG POOP PRESENT
Park does not have graffiti	✓			NO GRAFFITI
Has a posted process for park users to make maintenance requests		✓		
Safety				
Park has open design and sightlines throughout		✓		
Park hours are posted at all entrances		✓		
Park is free of high walls (8-10 feet) or other obstructions that block visibility	✓			NO WALLS
Shrubbery is well-maintained to prevent people from hiding in them		✓		NATURAL LANDSCAPE
If a park is open after dusk, sufficient pathway lighting is provided to navigate		✓		

BETTER WAY TO STATE "IS THERE GRAFFITI?"
 WONDER IF THIS WOULD BE A CANDIDATE FOR
 HELP FROM RFGV - WERP w/ EROSION,
 RIVER ACCESS, ~~SW~~ CREEK CROSSING,
 OFFICIAL PATH LENGTH, ETC

Modified DRAFT Assessment Tool

WORKING DRAFT 6/3/2022

Park Name/Park Purpose/Amenities Present	YES (check in box if Park does have)	NO (check in box if Park does not have)	What is the level of priority of need if applicable? (1 - immediate, 2 - short-term, 3 - long-term)	Responses to questions (write in any comments/suggestions)
(Fill in name of park for this assessment)				
Colorado Meadows				
(Fill in purpose of this park)				
1/2 playground				
(Fill in general description of park)				
Dated				
(Describe general condition / visible improvements needed)				
General				
Access				
Nearby streets have signage with directions to park			✓	
Presence of bike racks			✓	
ADA parking quantities meet Town code			✓	
Accessible spots are clearly marked with surface paint and signage			✓	
Loading/Drop-off area is curbside or has a single short curb	✓			
Direct and clear barrier-free route from parking lot to outdoor space and its amenities	✓			
Sidewalks connect park to the surrounding area for walkability			✓	
Presence of a bus stop near park				
Covered or shaded seating area near loading zone/drop-off area	✓			
Parking has sufficient lighting for facilities open past dark			✓	
All light sources are baffled so lighting is focused down on walking path (Dark Sky compliant)			✓	
Restrooms				
N/A				
Open and usable year-round				
If no permanent bathroom present or not open year-round, portable toilets are provided year-round				
If no permanent bathroom present or not open year-round, portable toilets are provided seasonally				
If portable toilets are provided, they are sited properly for accessibility (from parking areas, free of step to get in/out, etc.)				
Large enough to accommodate wheelchairs and walkers (minimum 60 inches)				
Has ADA stalls (# of stalls)				Quantity:
Door to facility is easily operable (i.e. not too heavy, easy to use handle, clear space at door swing)				
Stall doors are easily operable (i.e. self-closing hinges, easy to use handles and locks, clear space at door swing)				
Has toilets to accommodate young children				
Has non-slip flooring				
Restroom is visibly regularly maintained/cleaned				
At least one child changing table present				
Presence of a family bathroom				
Presence of a non-gender bathroom				
Stalls have hooks to hang a cane or bags				
Presence of a height-adjustable changing table that can accommodate adult weight				
Hand washing/sanitizing area present and accessible				
Drinking Fountains				
Presence of seasonal working water fountains and/or bottle filling stations	✓			
Fountain/filling station is universally accessible (children, wheelchairs, etc.)			✓	
Well drained/no water pooling around fixture			✓	
Easily operable			✓	
Water source for dogs			✓	
Trash Receptacles				
Presence of wildlife resistant trash receptacles throughout the park (# of receptacles?)	✓			Quantity:
Presence of recyclable receptacles throughout the park (# of receptacles?)	✓			Quantity:

Broken not providing H2O

Colorado Meadows

Trash is visibly regularly maintained/picked up	✓		
Dog waste bags are provided			
Dog pots are provided	N/A		No Dog Park
Are any trash, recyclable, or dog waste pots needed? If so, where?			Quantity: Response:
SEATING			
Benches			
Presence of benches or seating throughout	✓		
How many benches are in park?	✓		Quantity:
Seating is accessible by firm path	✓		
Presence of a clear ground space that is 36 by 48 inches and adjacent to one end of each bench for wheelchair users	✓		
Seating has appropriate sized backs and armrests to provide support and facilitate getting up	✓		
How many feet between benches along main paths?			Response: none
Surface material of bench does not retain excessive heat and is free of splinters	✓		
What type of material is the bench surface?	✓		Response: steel
Seating is provided in sun and shade	✓		
Are more benches needed in this park? (size of park versus seating options provided seem adequate?)			Yes move benches around
Picnic Tables			
How many picnic tables are available?	2		Quantity:
Picnic tables are accessible by firm paths	✓		
The park has at least one wheelchair accessible picnic table	✓		
There are tables available with multiple wheelchair accessible spaces	✓		
Constructed of heat resistant and splinter resistant material	✓		
What type of materials is the table constructed of?	✓		Response: steel
Shade / Covering Provided	✓		
Are more picnic tables needed in this park? (size of park versus table options provided seem adequate?)	✓		Add 1-2
Landscaping			
Additional Features			
Presence of flat grassy open area for low-impact exercise	✓		
Ground surface is maintained to reduce tripping hazards (i.e. grass areas are properly maintained and healthy)	✓		
Irrigation is in maintained order	✓		
Park has designated quiet or low-activity areas	✓		
Presence and maintenance of art/sculptures	✓		
Trees and Vegetation			
The parks are nicely vegetated and maintained where appropriate to support shade, habitat diversity, heat island cooling, stormwater management, etc.	✓		
Presence of canopy trees that provide shade	✓		
There is diversity in the tree species of the park	✓		
Vegetation provides habitat opportunities for the town's diverse wildlife populations			no vegetation other than trees
Plants in high activity areas are non-toxic and non-injurious such as not having thorns	N/A		
Landscaping is attractive and well maintained	N/A		
Native and drought resistant plants support pollinators and wildlife	N/A		
Does this park lend itself to the addition of more trees?	no		
Community Gardens			
Presence of well-maintained garden beds and pathways	N/A		
Signage near garden includes rules, instructions and plot rental information			
Gardening area has seating both in sun and shade			
Garden has easy to access water source and is accessible for wheelchairs			
Garden has an easy to access shed with gardening tools and materials			
Garden beds are accessible by a firm pathway			
Raised garden beds are at varying heights from ground to accommodate seated and standup gardening			
Paths			
N/A			
Sidewalks			
Sidewalks/Pathways are free of cracks and potholes			

Colorado Meadows

Sidewalks/Pathways are free of ground level obstructions and tripping hazards: roots, pebbles, leaves, sticks, seeds, etc.	N/A		
Sidewalk / Pathway surfacing is of a firm material			
Free of overhead obstructions such as tree branches			
Sidewalk / Pathway is a minimum of 3 feet wide			
Sidewalk / Pathway exceeds 3 feet in width			
How wide is the sidewalk / pathway?			Response:
Surface is non-slip			
Park has a continuous pathway that loops and does not lead to dead-ends			
Presence of quarter-mile distance markers			
Both firm and soft surface options are offered			
Stairs & Inclines	N/A		
Are stairs present in this park?			
Stair risers are consistent in height			
Is the height of the stair riser comfortable? If not, how high is it?			Response:
Handrails / guardrails are provided for any stairs, ramps, and inclines			
Handrails are comfortable (temperature, grip, etc.). If no, why not?			Response:
If stairs are present, a ramp is also available as an option for traversing inclines			
Are stairs needed in this park? If so, where?			Response:
Nature Trails	N/A		
Users are able to experience nature on a trail with a reasonable grade			
Users are able to experience nature on a hard surfaced trail			
At least one trail is specifically designed to be accessible			
Free of excessive debris such as loose sticks or rocks			
Is maintained and free of erosion or divots			
Is a minimum of 3 feet wide			
Trail is constructed of crushed rock or packed dirt rather than uncrushed gravel or round rocks			
Amenities and Features			
Playgrounds			
Playground is friendly for 0-5 year olds	✓		
Playground is friendly for 5-12 year olds	✓		
Multi-generational activities are present	✓	✓	
Restroom is in close proximity	✓	✓	NO RESTROOM
Good sightlines from benches	✓	✓	
Surfacing material is at a proper and adequate depth	✓	✓	
Shade is present within the playground	✓	✓	
Accessible activities are present	✓	✓	
Playground is approachable from parking via an accessible path	✓	✓	
Exercise Stations	N/A		
Park lends itself to having exercise station			
Presence of exercise stations			
Exercise stations have soft surface in case of falls			
Equipment is easily accessible from a path			
Instructions with visuals accompany each piece of exercise equipment			
Has low-impact exercise machines			
Dog Parks	N/A		
Dog rules are posted in park			
Dog agility features are present			
Water Areas (boat launch/ponds/ditches/river front)	N/A		
Presence and healthy maintenance of water features/water sources			
Universal access to water provided			
Benches present			
Accessible fishing area provided (Fishing is Fun)			
Fishing access allowed			
Signage present for rules/regulations/warnings			
Boat Launch / watercraft access			
Other General Amenities			
Presence of specialized recreation facilities for older adults (i.e. pickleball courts, exercise equipment, etc.)		✓	
Presence of space for group gatherings		✓	

Colorado Meadows

What additional amenities would this park benefit from?				Response:
Quiet calm areas can be found in park	✓			
Navigation				
Signage and Wayfinding				
A map of the park's layout is provided at the entrance		✓	✓	
Rules and regulations are posted	✓		✓	
Interpretive signs are present in the park			✓	
Wayfinding signs pointing to important locations (i.e. restrooms, features) are present throughout the park, especially where paths cross			✓	
Visible "Park Identification Sign" with the park name to mark entrances	✓			
Park is clearly defined as a "Town of Carbondale" park open to all	✓			
Are more park signs needed? If so, what kind and where?	✓			Response: other entrance on mesa Verde
All park signage is legible (readable font characters and size)	✓			
High contrast between characters and the background color	✓			
Signage is consistent throughout the park	✓			
Signage is universal through graphics and visuals	✓			
Signage is distinct from its surrounding environment such as not having a green sign amidst greenery	✓			
Educational signs such as plant labels and those with historical information are provided throughout the park			✓	
Bi-lingual signs are offered			✓	
All signs have a braille offering or accompaniment (separate signs with braille at ground-level)			✓	
Maps (either paper or permanent) are provided at several locations throughout the park			✓	
A map of the park's layout is available online for visitors to view or print prior to visiting the park	?			
Parking areas, restrooms, and major site features and amenities are clearly identified in mapping			✓	
Online information is consistent with onsite signage			✓	
Contact information for park management and maintenance is posted both at the park and online			✓	
Information on park rentals are identified and signed with current rental information			✓	
Operations and Maintenance				
Maintenance				
Park does not have excessive litter or animal droppings	✓		✓	
Park does not have graffiti	✓		✓	
Has a posted process for park users to make maintenance requests			✓	
Safety				
Park has open design and sightlines throughout			✓	
Park hours are posted at all entrances			✓	
Park is free of high walls (8-10 feet) or other obstructions that block visibility	✓		✓	
Shrubbery is well-maintained to prevent people from hiding in them	✓		✓	
If a park is open after dusk, sufficient pathway lighting is provided to navigate			✓	

Modified DRAFT Assessment Tool

WORKING DRAFT 6/3/2022

2 parks / one form

Susan Phea
6/24/2022

Park Name/Park Purpose/Amenities Present	YES (check in box if Park does have)	NO (check in box if Park does not have)	What is the level of priority of need if applicable? (1 - immediate, 2 - short-term, 3 - long-term)	Responses to questions (write in any comments/suggestions)
Henrick Ranch Park				
Park Name/Park Purpose/Amenities Present				
(Fill in name of park for this assessment)				
soccer & playground				
(Fill in purpose of this park)				
open fields, audience risers, playground				
(Fill in general description of park)				
well maintained				
(Describe general condition / visible improvements needed)				
General				
Access				
Nearby streets have signage with directions to park		X		
Presence of bike racks		X		
ADA parking quantities meet Town code		X		
Accessible spots are clearly marked with surface paint and signage		X		
Loading/Drop-off area is curbside or has a single short curb		X		
Direct and clear barrier-free route from parking lot to outdoor space and its amenities	X			
Sidewalks connect park to the surrounding area for walkability	X			
Presence of a bus stop near park		X		
Covered or shaded seating area near loading zone/drop-off area		X		
Parking has sufficient lighting for facilities open past dark		X		
All light sources are baffled so lighting is focused down on walking path (Dark Sky compliant)		X		
Restrooms				
Open and usable year-round	?			
If no permanent bathroom present or not open year-round, portable toilets are provided year-round				
If no permanent bathroom present or not open year-round, portable toilets are provided seasonally	?			
If portable toilets are provided, they are sited properly for accessibility (from parking areas, free of step to get in/out, etc.)				
Large enough to accommodate wheelchairs and walkers (minimum 60 inches)		X		
Has ADA stalls (# of stalls)	X			Quantity:
Door to facility is easily operable (i.e. not too heavy, easy to use handle, clear space at door swing)		X		men's v hard to open
Stall doors are easily operable (i.e. self-closing hinges, easy to use handles and locks, clear space at door swing)		X		none, ok
Has toilets to accommodate young children		X		
Has non-slip flooring	X			
Restroom is visibly regularly maintained/cleaned	X			
At least one child changing table present		X		
Presence of a family bathroom		X		
Presence of a non-gender bathroom		X		
Stalls have hooks to hang a cane or bags		X		
Presence of a height-adjustable changing table that can accommodate adult weight		X		
Hand washing/sanitizing area present and accessible	X			
Drinking Fountains				
Presence of seasonal working water fountains and/or bottle filling stations	X			
Fountain/filling station is universally accessible (children, wheelchairs, etc.)	X			
Well drained/no water pooling around fixture		X		leaking
Easily operable	X			
Water source for dogs		X		
Trash Receptacles				
Presence of wildlife resistant trash receptacles throughout the park (# of receptacles?)	X			Quantity:
Presence of recyclable receptacles throughout the park (# of receptacles?)		X		Quantity:

Hendrick Park Dog Park

Trash is visibly regularly maintained/picked up	X			
Dog waste bags are provided				no dogs
Dog pots are provided				Quantity:
Are any trash, recyclable, or dog waste pots needed? If so, where?				Response:
SEATING				
Benches				
Presence of benches or seating throughout	X			none w/ arms
How many benches are in park?	2			Quantity: add benches w/ arms by stadium risers
Seating is accessible by firm path		X		
Presence of a clear ground space that is 36 by 48 inches and adjacent to one end of each bench for wheelchair users		X		
Seating has appropriate sized backs and armrests to provide support and facilitate getting up		X		
How many feet between benches along main paths?				Response:
Surface material of bench does not retain excessive heat and is free of splinters	X			
What type of material is the bench surface?				Response:
Seating is provided in sun and shade				
Are more benches needed in this park? (size of park versus seating options provided seem adequate?)				
Picnic Tables				
How many picnic tables are available?	2			Quantity:
Picnic tables are accessible by firm paths		X		
The park has at least one wheelchair accessible picnic table		X		
There are tables available with multiple wheelchair accessible spaces		X		
Constructed of heat resistant and splinter resistant material	X			
What type of materials is the table constructed of?				Response:
Shade / Covering Provided	X			limited
Are more picnic tables needed in this park? (size of park versus table options provided seem adequate?)		X		
Landscaping				
Additional Features				
Presence of flat grassy open area for low-impact exercise	X			
Ground surface is maintained to reduce tripping hazards (i.e. grass areas are properly maintained and healthy)	X			
Irrigation is in maintained order	X			
Park has designated quiet or low-activity areas	X			
Presence and maintenance of art/sculptures		X		
Trees and Vegetation				
The parks are nicely vegetated and maintained where appropriate to support shade, habitat diversity, heat island cooling, stormwater management, etc.	X			
Presence of canopy trees that provide shade	X			need more near playground
There is diversity in the tree species of the park	X			
Vegetation provides habitat opportunities for the town's diverse wildlife populations		X		
Plants in high activity areas are non-toxic and non-injurious such as not having thorns	X			
Landscaping is attractive and well maintained	X			
Native and drought resistant plants support pollinators and wildlife		X		
Does this park lend itself to the addition of more trees?	X			
Community Gardens				
Presence of well-maintained garden beds and pathways				
Signage near garden includes rules, instructions and plot rental information				
Gardening area has seating both in sun and shade				
Garden has easy to access water source and is accessible for wheelchairs				
Garden has an easy to access shed with gardening tools and materials				
Garden beds are accessible by a firm pathway				
Raised garden beds are at varying heights from ground to accommodate seated and standup gardening				
Paths				
Sidewalks				
Sidewalks/Pathways are free of cracks and potholes	X			rough but ok

Hendrick Ranch Dog Park

Sidewalks/Pathways are free of ground level obstructions and tripping hazards: roots, pebbles, leaves, sticks, seeds, etc.	X		
Sidewalk / Pathway surfacing is of a firm material	X		
Free of overhead obstructions such as tree branches	X		
Sidewalk / Pathway is a minimum of 3 feet wide	X		
Sidewalk / Pathway exceeds 3 feet in width		X	
How wide is the sidewalk / pathway?			Response:
Surface is non-slip	X		
Park has a continuous pathway that loops and does not lead to dead-ends		X	
Presence of quarter-mile distance markers		X	
Both firm and soft surface options are offered		X	
Stairs & Inclines			
Are stairs present in this park?		X	
Stair risers are consistent in height			
Is the height of the stair riser comfortable? If not, how high is it?			Response:
Handrails / guardrails are provided for any stairs, ramps, and inclines			
Handrails are comfortable (temperature, grip, etc.). If no, why not?			Response:
If stairs are present, a ramp is also available as an option for traversing inclines			
Are stairs needed in this park? If so, where?			Response:
Nature Trails			
Users are able to experience nature on a trail with a reasonable grade			
Users are able to experience nature on a hard surfaced trail			
At least one trail is specifically designed to be accessible			
Free of excessive debris such as loose sticks or rocks			
Is maintained and free of erosion or divots			
Is a minimum of 3 feet wide			
Trail is constructed of crushed rock or packed dirt rather than uncrushed gravel or round rocks			
Amenities and Features			
Playgrounds			
Playground is friendly for 0-5 year olds	X		
Playground is friendly for 5-12 year olds	X		
Multi-generational activities are present			
Restroom is in close proximity			
Good sightlines from benches	X		
Surfacing material is at a proper and adequate depth	X		
Shade is present within the playground	X		needs more
Accessible activities are present			
Playground is approachable from parking via an accessible path			
Exercise Stations			
Park lends itself to having exercise station	X		
Presence of exercise stations			
Exercise stations have soft surface in case of falls			
Equipment is easily accessible from a path			
Instructions with visuals accompany each piece of exercise equipment			
Has low-impact exercise machines			
Dog Parks			
Dog rules are posted in park	X		
Dog agility features are present	X		
Water Areas (boat launch/ponds/ditches/river front)			
Presence and healthy maintenance of water features/water sources			
Universal access to water provided			
Benches present			
Accessible fishing area provided (Fishing is Fun)			
Fishing access allowed			
Signage present for rules/regulations/warnings			
Boat Launch / watercraft access			
Other General Amenities			
Presence of specialized recreation facilities for older adults (i.e. pickleball courts, exercise equipment, etc.)			
Presence of space for group gatherings			

residential

(see back previous page)

need another dog park

"sweetest spot in date"

too far from entrance, no hours?
fountain works,

Hendrick Park Day Park

What additional amenities would this park benefit from?				Response: accessible seating
Quiet calm areas can be found in park				shading over part of seating
Navigation				
Signage and Wayfinding				
A map of the park's layout is provided at the entrance		X		
Rules and regulations are posted	X			
Interpretive signs are present in the park		X		
Wayfinding signs pointing to important locations (i.e. restrooms, features) are present throughout the park, especially where paths cross		X		
Visible "Park Identification Sign" with the park name to mark entrances	X			
Park is clearly defined as a "Town of Carbondale" park open to all	X			
Are more park signs needed? If so, what kind and where?				Response:
All park signage is legible (readable font characters and size)				
High contrast between characters and the background color	X			
Signage is consistent throughout the park	X			
Signage is universal through graphics and visuals		X		
Signage is distinct from its surrounding environment such as not having a green sign amidst greenery	X			
Educational signs such as plant labels and those with historical information are provided throughout the park		X		
Bi-lingual signs are offered		X		
All signs have a braille offering or accompaniment (separate signs with braille at ground-level)		X		
Maps (either paper or permanent) are provided at several locations throughout the park		X		
A map of the park's layout is available online for visitors to view or print prior to visiting the park		X		
Parking areas, restrooms, and major site features and amenities are clearly identified in mapping		X		
Online information is consistent with onsite signage				
Contact information for park management and maintenance is posted both at the park and online		X		
Information on park rentals are identified and signed with current rental information		X		
Operations and Maintenance				
Maintenance				
Park does not have excessive litter or animal droppings	X			
Park does not have graffiti	X			
Has a posted process for park users to make maintenance requests		X		
Safety				
Park has open design and sightlines throughout	X			
Park hours are posted at all entrances	X			
Park is free of high walls (8-10 feet) or other obstructions that block visibility	X			
Shrubbery is well-maintained to prevent people from hiding in them	X			
If a park is open after dusk, sufficient pathway lighting is provided to navigate				



TOWN OF CARBONDALE
511 COLORADO AVENUE
CARBONDALE, CO 81623

Parks & Recreation Commission Agenda Memorandum

Item No: 5

Meeting Date: September 13, 2017

TITLE: 4th Street Plaza Park preliminary visioning, discussion, and ranking of visions

SUBMITTING: Parks & Recreation Department

ATTACHMENT: Parking Easement Exhibit Map
Estimate from Bell Mt. Golf and Grass for artificial turf.
Map of property square footage

PURPOSE: Visioning exercise to brainstorm future uses of the 4th street park parcel.

BACKGROUND: This property, which was donated to the Town of Carbondale, is approximately 10,000 sq feet minus the parking easement of 1,600 sq feet which leaves 8,400 sq feet of park space. The usable area, leaving the existing trees and planting to the north and west is approximately 6,250 square feet with a perimeter of 323 feet. This area is a multiuse park and serves as a concert venue, special event location for events like Cowboy Up and the Family Block Party and the summer farmers market location. This location is used almost every First Friday, including the winter month where we construct a seasonal ice rink and hold events such as Light Up Carbondale, the Family Skate Party and Dia de Los Muertos.

DISCUSSION: We have three options with this new park

1. Revamp the existing irrigation system, which uses domestic and treated water, and keep it as a turf park.
2. Hardscape the area to mirror the 4th street Plaza, which is directly to the west across 4th street.
3. Investigate an artificial turf solution.

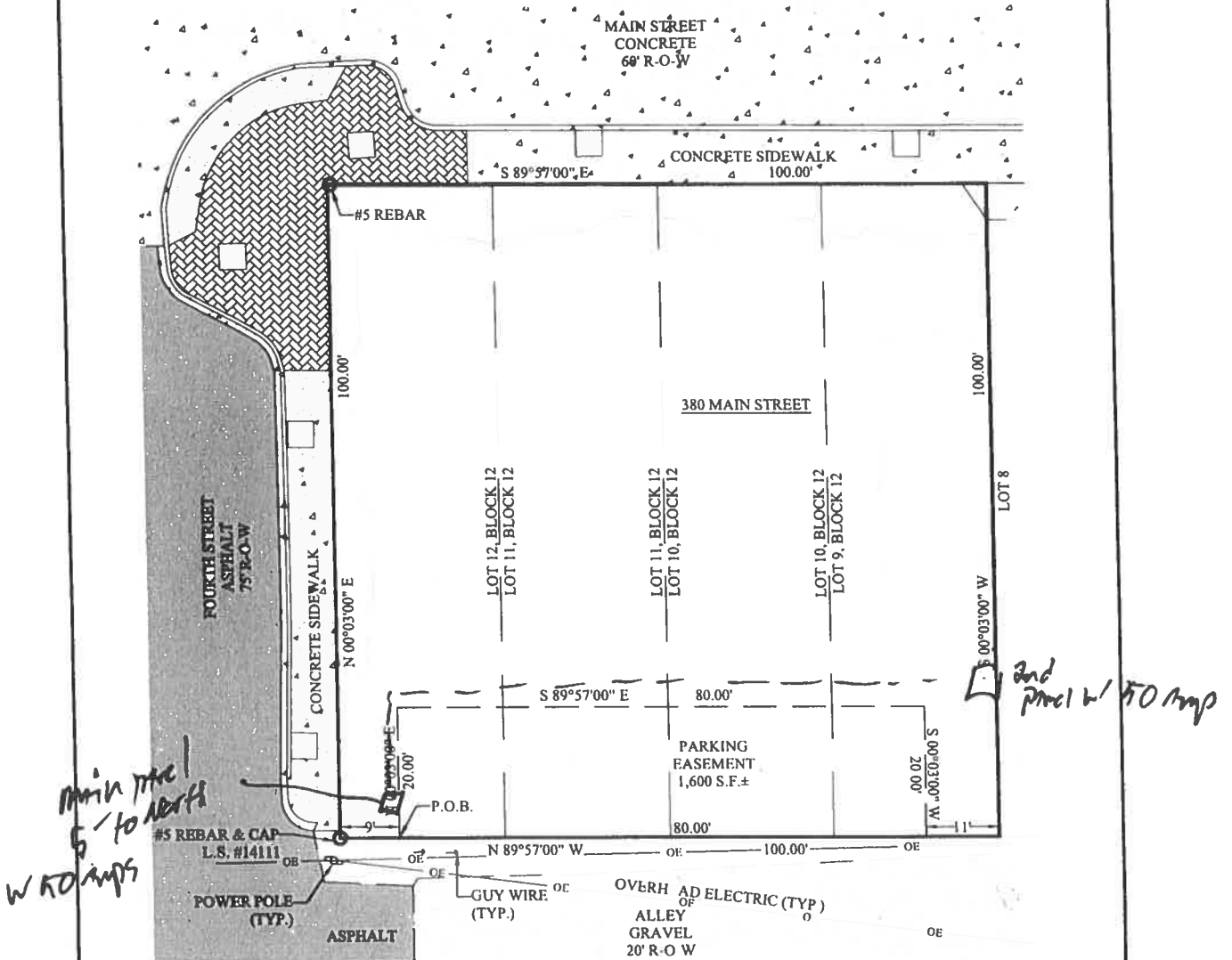
RECOMMENDATION:

1. Option one is the least expensive in the short run, but will require ongoing maintenance aeration, fertilization, reseeding and weekly mowing, so could be the most expensive in the long run.
2. Option two would be a very expensive investment and would not be as inviting of a space to listen to concerts and live performances or special events. This is a water wise and low maintenance option.
3. Option three is a large initial investment, but would be very inviting and comfortable surface that is water wise and another low maintenance option.

Prepared By: Eric Brendlinger, Parks & Recreation Director

PARKING EASEMENT EXHIBIT

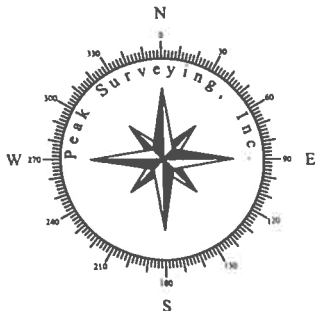
LOTS 9 - 12, BLOCK 12, ORIGINAL TOWNSITE OF CARBONDALE
ACCORDING TO THE PLAT RECORDED DECEMBER 17, 1887 AS RECEPTION NO. 5889
TOWN OF CARBONDALE, COUNTY OF GARFIELD, STATE OF COLORADO



PROPERTY DESCRIPTION

A STRIP OF LAND SITUATED IN LOTS 9-12, BLOCK 12, ORIGINAL TOWNSITE OF CARBONDALE ACCORDING TO THE PLAT RECORDED DECEMBER 17, 1887 AS RECEPTION NO. 5889, TOWN OF CARBONDALE, COUNTY OF GARFIELD, STATE OF COLORADO, SAID STRIP BEING MORE PARTICULARLY DESCRIBED AS FOLLOWS:

COMMENCING AT THE SOUTHWEST CORNER OF SAID LOT 12, BLOCK 12, A NO. 5 REBAR AND CAP P.L.S. NO. 14111 FOUND IN PLACE; THENCE S89°57'00"E ALONG THE SOUTHERLY BOUNDARY OF SAID BLOCK 12 A DISTANCE OF 9.00 FEET TO THE POINT OF BEGINNING; THENCE LEAVING SAID SOUTHERLY BOUNDARY N00°03'00"E A DISTANCE OF 20.00 FEET; THENCE S89°57'00"E A DISTANCE OF 80.00 FEET; THENCE S00°03'00"W A DISTANCE OF 20.00 FEET TO A POINT ON SAID SOUTHERLY BOUNDARY; THENCE N89°57'00"W ALONG SAID SOUTHERLY BOUNDARY A DISTANCE OF 80.00 FEET TO THE POINT OF BEGINNING, SAID STRIP CONTAINING 1,600 SQUARE FEET MORE OR LESS.



Drawn By	NO.	Date	Revision	By
FRN				
Checked By				
FRN				
Date				
DEC. 30, 2021				
Computer File				
064-EM				

TOWN OF CARBONDALE PUBLIC WORKS
TOWN OF CARBONDALE, COLORADO
PARKING EASEMENT
EXHIBIT A
LOTS 9-12, BLOCK 12

Project NO.
17084
1 OF 1



Date: June 29, 2022

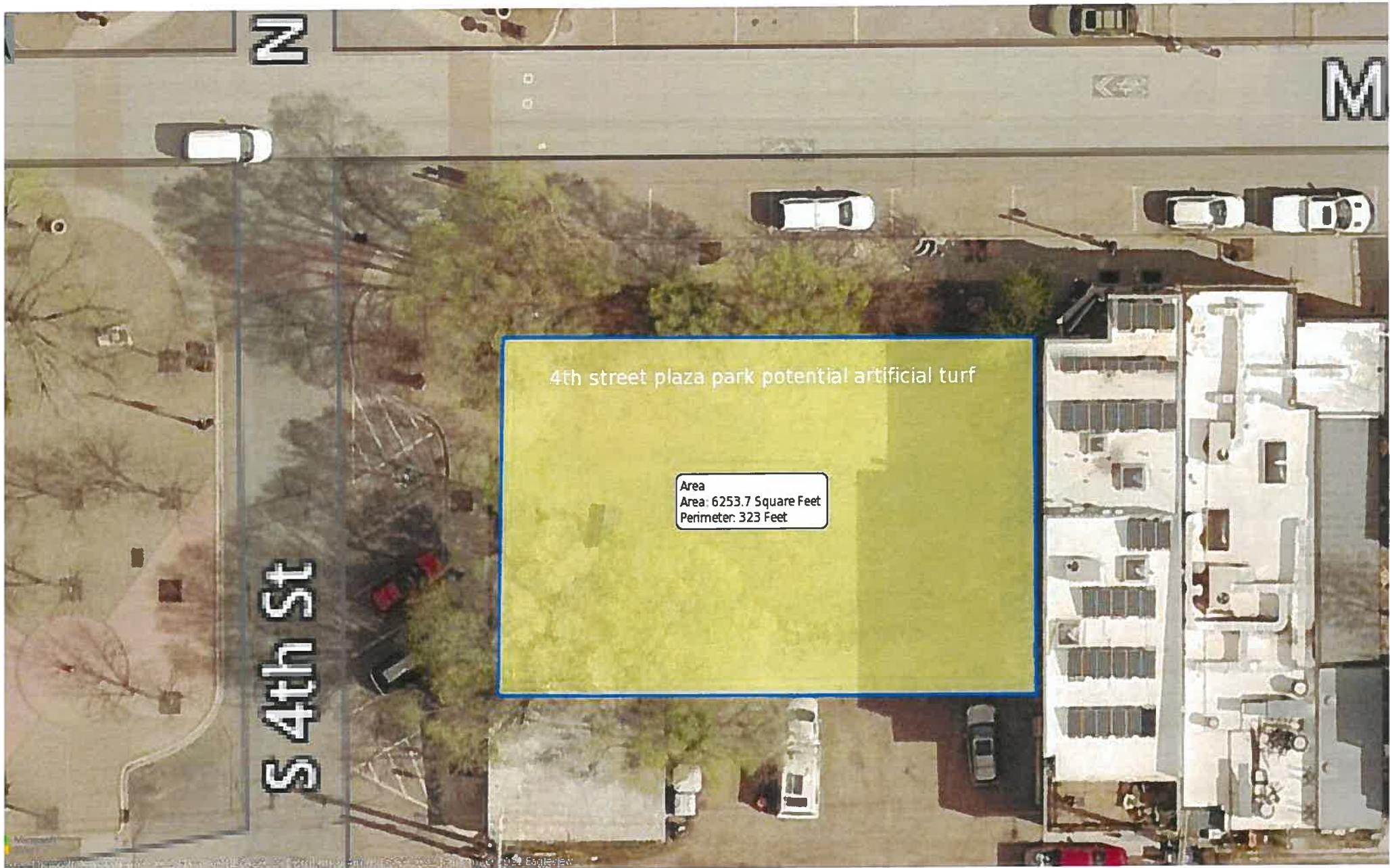
Estimate #: 1A

SOUTHWEST GREENS WESTERN CO

Ship to: SOUTHWEST GREENS WESTERN COLORADO
CARBONDALE, CO 81623

Make all checks payable to Southwest Greens Western CO
Thank you for your business!
PO Box 3279 ASPEN, CO 81612

4th Street Plaza park square rootage



Parks and Recreation Department and Open Space 2023-2027 Capital Improvement Plan		2022	2023	2024	2025	2026	2027
Parks							
Renovate Pool & Bath House	GOCO Community Impact Grant and Bonding		\$4,700,000	\$3,300,000			
Bear Proof Park Trash & Recycle Containers	Conservation Trust Fund	\$6,000	\$6,000	\$6,000			
Park Playground Equipment Replace/Retrofit	Colorado Meadows RSUT Grants			\$90,000			
Park Playground Equipment Replace/Retrofit	Hendricks RSUT	\$102,155					
Park Playground Equipment Replace/Retrofit	Sopris RSUT and potential grants					\$150,000	
Park Playground Youth Art Park Rio Grand	GOCO Mini-Grant	\$35,000					
Improvements at Bonnie Fischer Park	Bread Oven Solar, power, storage						\$35,000
4th Street Plaza Park event space retrofit	(artificial turf, hardscape or irrigated turf)		\$90,000				
Crystal River Front Park (ADA access ramp and outdoor classroom Fishing is Fun Grant)			\$30,000				
Crystal River Front Park (River restoration Fishing is Fun Grant)			\$50,000				
Crystal River Front Park (river/ park restoration work , CWCB Grant and/or Colorado River District for \$100k)			\$1,000,000				
Crystal River Front Park (AVLT lead on GOCO Resilient Communitys Grant)			\$55,000				
Thompson Park & History Park Improvements	(Permaculture and Park signage / groundswork)				\$25,000		
North Face Bike Park re-design and maintenance needs		\$20,000	\$15,000				
Park Bathroom Improvements	North Face Park/Gianinetti Park RSUT and grants			\$125,000		\$125,000	
Skateboard Park, Tennis & Pickleball Lighting Project (GOCO Community Impact grant)							\$360,000
Trail Improvements (Red Hill Trailhead picnic shelter/ landscaping)		\$20,000					
Trail Improvements (Red Hill Trailhead picnic shelter/ landscaping) AVLT GOCO Resilient Grant		\$55,000					
Trail Improvements (Red Hill B-line retrofit and new bike only trail creation AVLT Endowment)		\$30,000	\$15,000				
Nuche Park Improvements (CPW trail grant, RFOV trail work, plantings, dedication sign, picnic shade shelter)					\$125,000		
Gateway RV Park Irrigation System						\$45,000	\$25,000
Gateway RV Park Bathhouse roof		\$16,000					
VFD Pump and redesign for South Highway 133 corridor Irrigation System		\$80,000					

Total Capital Outlay

Potential Grant Funding
Grant Funded %

\$364,155	\$5,961,000	\$ 3,415,000	\$150,000	\$320,000	\$420,000
\$90,000	\$2,000,000	\$125,000	\$45,000	\$60,000	\$250,000
24%	33%	3%	30%	18%	59%
	bond + grants	bond + grants			

CARRY OVER FROM 2022 BUDGET

Grant accepted

Grant Requested

Grant Denied

TOWN of CARBONDALE, COLORADO
Parks and Recreation Sales and Use Tax Revenue Bonds, Series 2022

Timetable of Events as of June 10, 2022

June							July							August							September						
S	M	T	W	T	F	S	S	M	T	W	T	F	S	S	M	T	W	T	F	S	S	M	T	W	T	F	S
			1	2	3	4						1	2		1	2	3	4	5	6				1	2	3	
5	6	7	8	9	10	11	3	4	5	6	7	8	9	7	8	9	10	11	12	13	4	5	6	7	8	9	10
12	13	14	15	16	17	18	10	11	12	13	14	15	16	14	15	16	17	18	19	20	11	12	13	14	15	16	17
19	20	21	22	23	24	25	17	18	19	20	21	22	23	21	22	23	24	25	26	27	18	19	20	21	22	23	24
26	27	28	29	30			24	25	26	27	28	29	30	28	29	30	31				25	26	27	28	29	30	
							31																				

= Market Holidays
 = FOMC Meeting Dates

<u>DATE</u>	<u>EVENT</u>
June 1	First Draft of Bond Documents sent to working group
June 8	Questionnaire for POS sent to Town by Butler Snow
June 27	Information request for POS returned by Town to Butler Snow
July 6	First draft of POS circulated
July 13	Drafting Session – full Working Group
July 19	Revised drafts of all documents circulated to Working Group Send documents to Rating Agency
July 21	Authorizing Ordinance and Documents submitted for Board Packets
July 26	Regular Meeting of Board of Trustees Approval of Ordinance
August 5	Ordinance Published in Weekly Paper by this date
August 11/12	Conference Call with Rating Agency
August 24	Rating results received
August 26	Municipal Bond Insurance Bids Due (if needed)
August 29	Due Diligence Call
September 1	Final Comments / Sign off on POS
September 4	Ordinance Effective by this Date
September 6	POS Posted
September 13	Pricing of Bonds
September 27	Closing and Delivery of Proceeds



Town of Carbondale, Colorado Next Steps for Request for Proposals for Underwriting Consulting Services

Introduction and Overview

In August 2021, the Town of Carbondale, Colorado (the "Town") distributed a Request for Proposal for Underwriting Consulting Services to assist in the Town's planning for a potential debt issuance for a new aquatic facility. The Town received responses but did not select a firm at that time and instead decided to focus on first receiving voter approval for a bond issuance. In April 2022, the Town placed on the ballot and successfully passed a debt question for the issuance of up to \$8 million of bonds to be repaid with the Town's existing recreation sales and use tax revenues. The Town has been working with Butler Snow LLP as Bond and Disclosure Counsel and Hilltop Securities Inc. as Municipal Advisor to begin drafting financing documents with the expectation to present an Authorizing Ordinance for approval at the Board of Trustee's meeting on July 26, 2022.

The Town is now revisiting its original request for underwriting services with the intent to select a firm in anticipation of selling bonds in mid-September. The Town will be conducting interviews with the firms that responded to the original RFP.

The 2022 Bonds

The Town anticipates issuing \$8 million of Recreation Sales and Use Tax Revenue Bonds, Series 2022 (the "2022 Bonds") as approved at the 2022 Election. The 2022 Bonds will be issued on parity with the Town's outstanding Recreation Sales and Use Tax Revenue Refunding Note, Series 2018 (the "2018 Note") which is currently outstanding in the principal amount of \$586,200. The outstanding payments for the 2018 Note are included in Appendix A.

The 2022 Bonds will be issued with interest payments on June 1 and December 1, beginning on December 1, 2022. The 2022 Bonds will have principal payments on December 1 each year with a final maturity in 2047. The 2022 Bonds must be structured to meet the Additional Parity Indebtedness requirement of 1.50x from the 2018 Note based on 2021 audited revenues of \$1,046,051.

The Town is currently targeting a pricing date for the 2022 Bonds of September 3, 2022 with a closing shortly thereafter on September 27, 2022.

Submission of Presentation for Interviews

The Town is seeking to select an underwriter to serve as sole manager on the issuance of the 2022 Bonds. Firms should submit a presentation to the Town by the deadline stated herein. Firms will then be expected to discuss their materials during a 30-minute presentation to Town staff on July 22, 2022. The interviews will be scheduled for 45 minutes to allow for 15 minutes of questions throughout the presentation.

The Town will take into consideration the firm's specific experience with Colorado issuers and the relevant experience of the public finance and underwriting professionals as submitted in the firm's

original proposal from August 2021 as well as information presented during these interviews. The Town expects to select the firm which it believes will best meet its overall expectations for the proposed financing and will not necessarily select the firm with the lowest proposed underwriting spread.

Please submit your presentation in PDF format via e-mail no later than 5:00 pm (MT) on July 21, 2022, to Renae Gustine at rgustine@carbondaleco.net. <mailto:dhart@cherrycreekschools.org>

In addition, please e-mail a copy of the presentation and address any information requests or questions about the selection process to the Town's Municipal Advisor using the contact information below.

Jason Simmons
Mattie Prodanovic

jason.simmons@hilltopsecurities.com
mattie.prodanovic@hilltopsecurities.com

Tentative Schedule of Events

July 8	Interview Questions & Format Distributed
July 21	Presentations delivered to the Town
July 22	Virtual Interviews
July 26	Underwriter Selected

Required Response Items

Please provide responses to these items in the general sequence presented. The Town discourages the use of boilerplate language and exhibits and encourages each proposing firm to prioritize its responses according to its sense of relevance and importance of the information. Each firm will only have 30 minutes to cover the material submitted in the presentation.

1. Briefly introduce your firm and the professionals who will work with the Town on the transaction. Identify the underwriting or trading desk personnel who will be responsible for pricing this issue and provide brief descriptions of their relevant experience.
2. The Town does not currently have a rating for the anticipated bonds. Please discuss your thoughts on the following items:
 - i. Important credit characteristics for discussions with the rating analysts;
 - ii. Need for a debt service reserve fund; and
 - iii. Value of municipal bond insurance.
3. Provide your firm's pricing scale and spread to MMD for the suggested structure based on market rates as of July 19, 2022. In your response, please include and discuss at least two comparable transactions, preferably for relevant Colorado issuers.
4. Provide a proposed fee for a \$8 million issuance of recreation sales and use tax revenue bonds with a 25-year repayment term. Please indicate whether you anticipate retaining underwriter's counsel, and, if so, what related costs the Town would be expected to absorb. Please identify any other cost reimbursements you would expect to submit for payment by the Town.

Appendix A

Year	Principal	Interest	Total
2022	\$190,100	\$16,121	\$206,221
2023	195,400	10,893	206,293
2024	200,700	5,519	206,219
Total	\$586,200	\$32,533	\$618,733



Parks & Recreation Commission Chair & Vice-Chair Role and Responsibilities

The Commission Chair:

- Is responsible for ensuring that the Commission is operating in accordance with Town Code, any set policies, and procedures, and for ensuring the ongoing integrity of the Commission's processes.
- Endeavors to build consensus and teamwork within the Commission; encourages an atmosphere of openness and trust and strives to maintain a cohesive group without losing diversity of opinion and independent points of view.
- Collaborates with the Parks and Recreation Director in setting meeting and work session agendas and maintaining the Master Calendar and the Commission Resource Guide.
- Presides over all Commission meetings and work sessions. Sets the tone of the meetings and how the Commission will conduct business, maintaining a sense of respect and decorum in Commission operations. Helps the public and guests to feel welcome at meetings. Keeps discussions orderly, focused, efficient, impersonal, and fair. Strives to start and end meetings on time.
- Works closely with the Parks and Recreation Director and assists in facilitating communications amongst the commission members as well as securing commission member participation in tasks and special projects. When appropriate follows up with commission members on those tasks and projects.
- Meets with commission members as needed to collaborate on projects, listen to thoughts, ideas and concerns, answer questions, and provide general guidance.
- Attends Trustee meetings as needed to represent the Commission. When designated, represents the Commission at other public meetings, signs correspondence on behalf of the Commission and acts as a spokesperson.
- Collaborates with the Parks and Recreation Director and provides support as appropriate, to keep an overview and to monitor the implementation of Town Parks and Recreation priorities as outlined by: decisions made at official meetings, the Master Plan, the Capital Improvement Plan, and the Annual Budget.
- Provides constructive feedback to the Parks and Recreation Director.
- Promotes open Commission positions and encourage commission members to do the same.

The Commission Vice-Chair:

- Supports the Commission Chair and the Parks and Recreation Director when needed.
- Ideally the Vice-Chair is the future leader of the Commission and prepares to assume the position of Commission Chair by working closely with the Chair and Parks and Recreation Director to gain knowledge, history, understanding, and experience.
- Assists the Commission Chair in the execution of his/her duties and collaborates with the Chair to help the Commission operate effectively and efficiently. Fulfills the Commission Chair's duties when the Chair is absent, or the position becomes vacant.
- Assists the Parks and Recreation Director and Commission Chair in facilitating communications among the Commission.
- Serves as the contact person if a complaint is to be made about the chairperson. Complaints would then be taken to the Parks and Recreation Director to collaborate on how best to handle the situation.
- Collaborates with the Chair to advise and provide wise counsel.

Qualities of a Good Chair and Vice-Chair:

- A strong team player who is willing to listen, analyze, think clearly and creatively, speak on point to issues, complete tasks in a timely manner and work well with people individually and in a group.
- Well organized; prepared for the meetings and familiar with issues on the agenda. Respects other people's time, staying focused and running efficient meetings.
- Follows through on assignments and completes tasks on time.
- Familiar with the Town Code as it relates to the Parks and Recreation Commission as well as Commission operations and procedures, potential conflicts of interest and Sunshine Laws. Being willing to seek advice when uncertain.
- Serves as a model of leadership and inspires public confidence in Town government. Acts and speaks with honesty and integrity.
- A good listener and communicator; exhibits impartiality, tact, and diplomacy with a sensitivity of and tolerance toward differing views. Maintains a sense of humor.
- Enthusiastically and positively supports the goals and objectives of the Parks and Recreation Department and the Town of Carbondale. Does not do anything contrary to established policies and programs adopted by the Trustees.



TOC Parks & Recreation Department's Budget Priorities & Projects

Project Number	Budget Year	What	Who (Staff /subcontracted)	Expenditures General Fund, RSUT, Grant	Priority Ranking
1.		New Bathrooms			
2.		Signage Master Plan			
3.		Nature Playground			
4.		Focus on Diversity, Equity and Inclusion			
5.		Highlight the gateways into town aesthetically - declare what Carbondale is and when you are in			
6.		Pool!!!!			
7.		Streamline online presence / communication for parks/trails/events as relates to Department			
8.		Diverse playscapes / one playground that is a true attraction			
9.					
10.					

NOTES:

HOLLIS

TOC Parks & Recreation Department's Budget Priorities & Projects

Project Number	Budget Year	What	Who (Staff /subcontracted)	Expenditures General Fund, RSUT, Grant	Priority Ranking
1.		Bike & Pedestrian Network - finish connections			
2.		Park Assessment Tool			
3.		Fundraise - Foundation - Gift Catalog - Grants			
4.		Rebuild Bathrooms			
5.		Adopt a Park Program?			
6.		Nature Park Plan			
7.					
8.					
9.					
10.					

NOTES:

Fire Mitigation
 Community Gardens - add more - Raised Beds - wheelchair access
 Trail ID - E-Board Plot Program?
 Stairway Park Fire Mitigation
 Mines Park Accessibility
 North Face Park - add restrooms, etc?
 Youth Teen Programming
 Senior Programming } Partner, expand communications - Locations (Parks?)

Susan Rhea
6/27/2022

TOC Parks & Recreation Department's Budget Priorities & Projects

Project Number	Budget Year	What	Who (Staff /subcontracted)	Expenditures General Fund, RSUT, Grant	Priority Ranking
1.		Gianetti park bathroom upgrade			
2.		Nature Park - protect sensitive pond area			
3.		Riverfront - short term, fix stairway to "ramp"			
4.		Pool ReDesign for energy efficiency, net-zero			
5.		Signage at Triangle Park public access!			
6.		Replace bathroom doors at all parks for easier access			
7.		Bike & ped safety crossings on 133			
8.		Improve signage at parks, universal design, "dawn to dusk" instead of 6-10			
9.		Improve web online info about park features & accessibility			
10.		Prioritize accessible/ADA improvements at Gianetti			

NOTES:

public comments -
 addition large dog park like Hendricks needed. It is over used.
 Pamey-Harvey Park - Crystal Meadows residents miss glider & features at gathering places. Well loved park.
 Hendrick Dog Park - additional shaded seating needed.

Eric

TOC Parks & Recreation Department's Budget Priorities & Projects

Project Number	Budget Year	What	Who (Staff /subcontracted)	Expenditures General Fund, RSUT, Grant	Priority Ranking
1.	2023-24	Pool Project	sub	Pend-RSUT	1
2.	2022-23	CRRP - Crystal River Restoration Project	staff/subs	Grants	2
3.	2022-23	Red Hill Trailhead + Trail Maintenance + Landscaping	staff/volunteer	Grant, GF	3
4.	2022	Sopris Park sidewalk/Drinking fountains	pro build subs	endowment GF	4
5.	2022	Greenwood Plauduck Playground	sub	RSUT	5
6.	2022	Raney-Harvey Park Improvements	staff	GF	6
7.	2022	Youth Art Park w/ Garberville Arts	Grant sub	Grant	7
8.	2022	Gatunay RV Park have Rest	sub	GF	8
9.	2022	Highway 133 Irrigation Project	sub	GF	9
10.	2022-23	CIWMP -	staff + subs		10

white space defined

Yellow

NOTES:

- ① Expanding Penetev Garden ADA access - Raised Beds community garden opportunities
- ② updating inventory of parks
- ③ Restrooms Improvements + protecting them from vandalism, ADA Accessible
- ④ Engage outside groups for partnerships
- ⑤ Connectivity - parks + the public

In Progress	Carbondale P & R Outstanding Projects	7/13/2022	Funding source or amount	Completed	30 days	60 days	90 days
Need to check on status							
2022 New projects							
*delayed final design/ permits	GOCO Resilient Communities AVLT Red Hill Shade Shelter & landscaping		Grant \$55,000	GOCO Contract & Resoution	Contracting and construction	Contracting and construction	Completion
	Red Hill B-Line Trail Improvements and C-line alternate bike trail.	AVLT Maintenance Endowment		Trail open	completed	no probuild needed	
	Crystal River Restoration and Weaver Ditch Efficiency Project		Grant Funded	Fully Funded	construction delayed due to high bid	potential year delay	fundraising
	GOCO Resilient Communities AVLT ADA Access/ classroom		grant \$55,000	GOCO Contract &Resoution	coonstruktion delayed due to high bid	potential year delay	grant extension
	Fishing is Fun Grant Crystal River Project. CPW 2020 ADA access/classroom		Grant \$30,000	processed	construction delayed due to high bid	potential year delay	grant extension
	Fishing is Fun Grant Crystal River Project. CPW 2021 In-channel improvemen		Grant \$50,000	processed	construction delayed due to high bid	potential year delay	grant extension
	*no staff training		2022 Budget	BOT 2022 Plan Approved	Contracted Natural Land managers	Implement Plan	Implement Plan
	CIWMP- Approval for 2022 weed mitigation strategies		2022 Budget	RVR & Orchard spinner floors	Hendricks, Sopris and Gianinetti	vinyl coating on exposed metal	summer maintenance project
	*delayed production/ delivery		2022 Budget	purchased side walls and banners	Create fee waiver guidelines	summer use	Summer Use
	Mobile Stage 3 trained used 8 times in 2021		2022 budget	voter approved	schedule bond release dates	Hire Owners Rep and Bond Underwriters	RFP for engineering and design work
	Aquatics Facility Bond Process	Hilltop Securities	hired council & bond finance	Test sections wood chips donated	Test Pea gravel in mud under wood chips	Wood Ship project	wood chip project
	Nature Park-loop pathway improvements	trail maintenance techniques	surplus EWF from 2021	Town Staff request to GM	experiment in Triangle and Orchard	report	report
	RVR Park Weed Management - can/will they adopt Town weed plan		Orchard & Triangle Park	RFP closed 5 proposals	contracted with A to Z Recreation	ordering and demo	construction
	Hendricks Playground Replacement	Burke bid \$82,604	2022 Budget	equipment arrived	bid accepted for new concrete pads	fall project August/Sept	fall project August/Sept
	Sopris Park	Water Fountain replacements	ordered	research	subcontract graphic artist	produce	marketing and advertise
	Dogs in park story map		2022 Budget	VFD Pump installed and plugged in	Functional	process VFD rebate	Functional
	Miners Park Irrigation Retrofit to ditch water		2022 parks CIP budget	rfp and bids-no bids by due date	re advertise	re open bid in August	award bid and contract fall project
	Highway 133 South Irrigation replacement project		2022 Parks CIP budget	extension to Sept 2022	RFP for contractor phase 1	Summer Project	Summer Project
	Youth Art Park Rio Gande with Carbondale Arts		\$35k GOCO Grant Extension	Grant not awarded	contractcting for LED Gym retrofit	summer project scheduled	summer project completion
	Replace Rec Center Skylights and LED Gym retrofit		2022 Rec budget & FMLD Mini	budgeted	fall project if needed	Schedule and contract the work	
	Replace Pool Chemtrol distribution unit		2022 Pool Budget	Feb P & R Meeting	use for 2023 budgeting	use for 2023 budgeting	budgeting for 2023
	Updated Highlighted Chart of Master Plan		na	New town park paperwork	bear proof trash cans & install signage	install solar irrigation controllers	install picnic table and
	Ramey-Harvey Park Improvements		2022 budgeted	Title work complete?	demo shed for parking easement	Research improvements	Budget for improvements 2023
	4th Street Plaza Park Imrovements		Not budgeted				
* affected by covid-19	Orchard Park Playground Replacement Project		Construction completed	Completion Winter 2021			
	Aquatics Facility Master Plan		completed	GOCO Grant closeout			
	Nuche Park - Parking & Signage		Fence Permit and approval	fence completion			
	Miners Park Volleyball Border Project		net sleeves, lines, grass seed	Completed			
	Triangle Park Tennis Courts crack repair		completed with final fix	open			
	Batting Cage at Bill Hanks		construction complete	Inspected install signage	shut down store for winter in shed		
	*delayed fundraising		Old Fence Removed & contract	Construction and completed			
	*delayed bidding		Street Crew				
	Fence at White Hill (Hillcrest) Cemetery received bid Taylor Fencing		conservation Trust Fund	2 in triangle, 2 in Thompson	Timing TBD but before Bald Eagle Closure	Construction	Bald Eagle Closure Dec 1
	Nuche Park Parking Lot improvements	Grade and Road base	Demeters Garden/Access road	public outreach /sign production	arrived and placed	done	done
	Bear Proof Trash and Recycling Cans		2022 rv park budget	Contracted w/Lassiter phase 4	Signs Installed send letters to homeowners	Enforcement	Enforcement
	Bonnie Fisher Park signage and enforcement		2022 budget	RFP with Proposals	work complete sites 15-19	completed	completed by May
	Electric Work at RV Park		2022 Rec budget	project completed	Kiosk signage completed and installed	done	
	Red Hill Signage for completed kiosk		2021 budget partial	replaced , waiting to test	installed	test in spring when waer back on	functioning
	North Face Bike Park Jump line capping		2022 parks budget	equipment purchased	Use	use	use assesment
	Replace pool water heater at Pool		2022 rv park budget	project completed	completed	completed by May 6th	completed
	Electrification of mow equipment		2022 budget	Fence Completed	contract for survey and plot layout	work concluded	work concludes
	High Speed Radio WiFi Internet at Gateway RV Park				completed	no probuild needed	
	Hillcrest Cemetery						
	Red Hill C-line alternate bike trail.	AVLT Maintenance Endowment		Trail open			
Grants not awarded 2022	FMLD Rec Center Gym LED Lighting Retrofit	FMLD Mini-Grant		submitted	not awarded		