



EL CAMPO PUBLIC WORKS PARKS MASTER PLAN

2021-2031

A comprehensive plan to address the needs of a growing community.
This Parks Master Plan continues the work from past master plan manuals in addressing old needs coupled with new needs and technological advancements. The purpose of this plan is to incorporate community research with common sense applications. To create an extraordinary quality of life, you must create a vision that is not only obtainable,
but that is sustainable.

Kevin Thompson CFM Director of Public Works

kthompson@cityofelcampo.org

City of El Campo Parks Master Plan 2021- 2031

City of El Campo Parks Master Plan 2021- 2031

Table of Contents:

- 1) Introduction
- 2) Demographics
- 3) Park Metrics
- 4) Performance reviews

City of El Campo Parks Master Plan 2021- 2031

Introduction:

Parks and recreation master planning is a comprehensive process that provides guidance and policy direction to local government decision makers. The planning process, which engages stakeholders and garners public input, provides a foundation for understanding and responding to the parks and recreation needs of a community. The process involves strategically examining a community's vision; existing community services, facilities, and resources; and assessing future needs concerning parks, recreation, open space, and greenways.

Master plans allow a local government to assess current and future recreational needs, evaluate feasible options, develop a strategic action plan, and budget for long-term or phased-in development and improvements. Master plans lay out an organizational framework for improving parks and recreation facilities, programs, and services to better serve the public. The master plan shapes the delivery of local government parks and recreation services, programs, and activities in a manner that is consistent with a local government's comprehensive plan and policy agenda.

Preparing parks and recreation master plans can provide a foundation for economic development, building healthy communities, and to provide a unique sense of place. It is important for local government leaders to understand the relationship between community parks and recreation services, economic development, and quality of life.

The master planning process enables local governments to assess recreation needs and interests of community members. It enables decision makers to prioritize resource allocation, decisions for new facilities and rehabilitation projects, programs, and services in a manner that is fiscally responsible.

Master plans can provide a foundation for:

- Building credibility, support, and consensus from community members and stakeholders
- Informing citizens about a park's needs and its community assets
- Identifying capital improvement goals that are needed to assess fiscal requirements and fundraising needs
- Guiding critical decisions about parks and recreation facilities, infrastructure, programs, and services
- Developing recommendations and an implementation strategy

A successful master plan will transform a community's vision into tangible plans to create outstanding recreation opportunities, well-maintained facilities, and a customer-focused and responsive park system.

The Parks Recreation & Community Services Board (PRCSB) has been enlisted to advise and make recommendations to the city council. The board is comprised of a diverse group of citizen volunteers that represent various community members and interests.

City of El Campo Parks Master Plan 2021- 2031

The El Campo Public Works Department has compiled this plan by researching existing conditions, conducted site inventories, utilized map data and traffic data to address accessibility and useability of existing parks and make recommendations on acquiring park land and recreation facilities. Past studies and Master plan data that identified needs are considered in this plan.

Demographics:

El Campo Texas is the largest incorporated city in Wharton County. The 2010 census showed a population of 11,602 and is situated at the crossroads of Hwy 59/69 and State Hwy 71. El Campo city limits encompasses 9.05 square miles with an Extra Territorial Jurisdiction (ETJ) of 24.16 square miles. El Campo is the commercial center of Wharton County. Race and ethnicity characteristics are comprised of 47.0% Hispanic, 41.6% white, 10.4% black or African American, 0.2% American Indian or Alaskan, 0.5% Asian and < .01% other mixed races. 3,875 households and a median income of \$45,413

Incorporated in 1905 as a municipal government. It has a manager/ council form of government with 105 employees in City Hall, Fire, EMS, Public Safety and Public Works. Within the Public Works Structure falls the park system maintenance and operation. Public Works Consists of 6 divisions: Administration, Utilities, Streets and Drainage, Vehicle Maintenance, Facilities Maintenance and Parks.

Under the Director of Public Works, The Parks Division consists of 6 employees to maintain the Grounds and landscape of 122.8 public recreation acres, including the El Campo Civic Center, El Campo Aquatic Center, City hall and Greenspace, and 8 parks: Evans Park, Alamo Park, City Park, Willie Bell Memorial Park, Legacy Park at Legacy Fields, Rotary Park, Friendship Park and ECHA Delta St Park. Facilities Maintenance is tasked with maintaining the Public Building Structures.

El Campo Public Works goal is to Individualize the park system and build on the previous comprehensive plans, concentrate efforts on each park to bring it up to the park vision. The Goal of the park system is to increase security, lighting upgrades, address the traffic issues and create small restorative areas inside each major park that create mini- parks inside of the major community parks by installing benches and small landscaped areas along the wooded areas and walking trails. Enhance the smaller neighborhood parks and mini parks with “zen” type landscape areas. Restroom upgrades are needed in many of the parks. Some will need to be constructed for more community use. Drinking Fountains were installed in 2014 and need repair or replacement. Additional covered picnic areas need to be installed in many of the parks. Traffic Counts will show the frequency of visitations to each major park.

A community survey completed in 2010 identified the wants and needs of El Campo citizens. This survey expressed the need of an additional park on the west side of El Campo. In 2015 the Park at Legacy fields was opened to the public. It contains some of the survey results for an inclusive park for visitors of all ages, a pond for a natural feel and a place for softball/baseball tournaments and ADA accessible playground. The survey also discovered most major parks (Legacy, Friendship, Rotary and Willie Bell) users utilize the walking paths and covered picnic

City of El Campo Parks Master Plan 2021- 2031

tables. Field sports such as Soccer and softball/baseball are the next common use and then for special events such as BBQ benefits, holiday events and fundraisers. Neighborhood and mini parks (Alamo, Evans, City Park and Delta) are frequented by family events such as birthday parties and reunions. Other Venues such as the El Campo Aquatic Center, El Campo Civic Center and City Hall Greenspace are in the Parks Division for Maintenance but have autonomous operation.



Park Metrics:

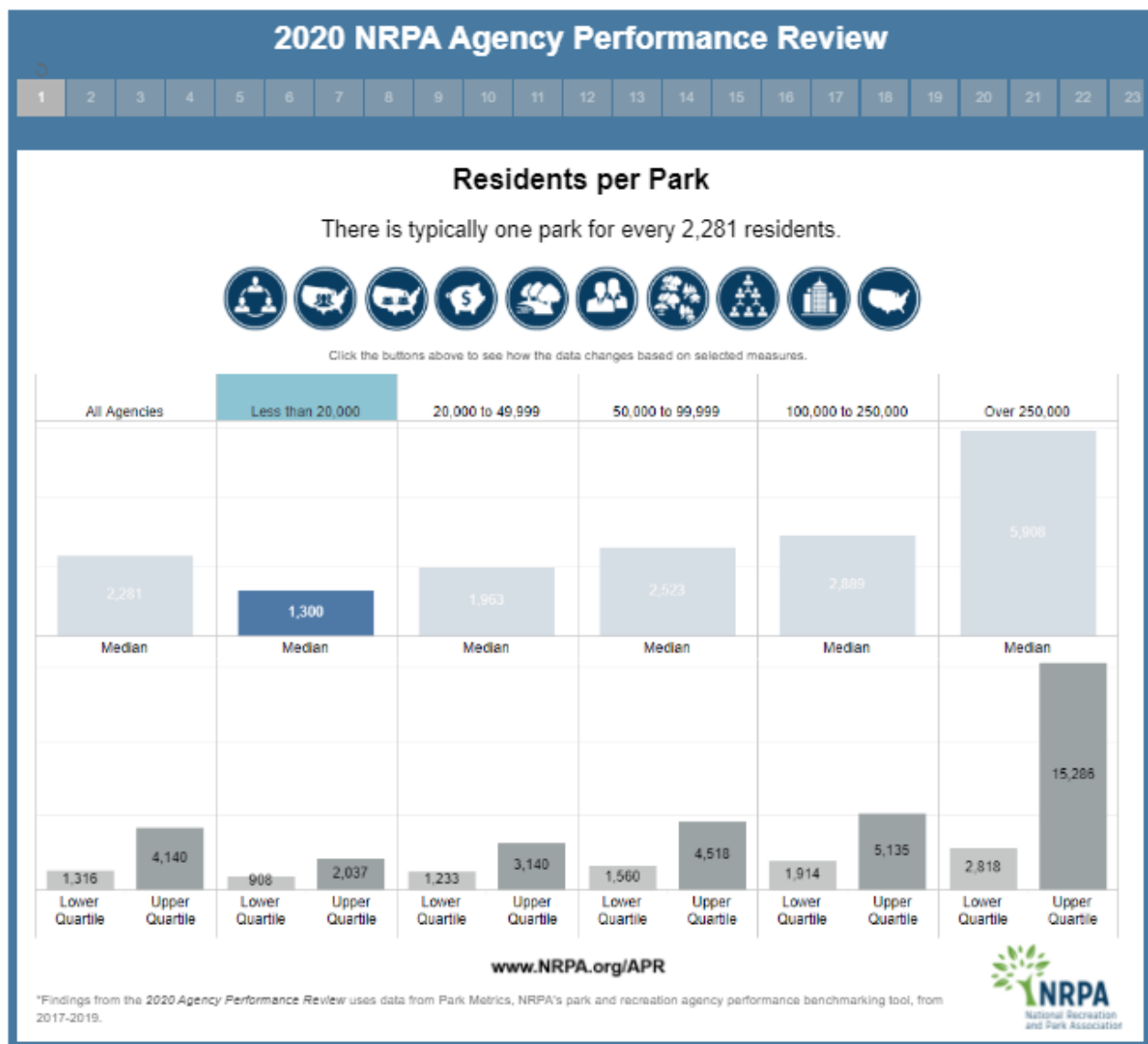
In 2019, NRPA Park metrics has replaced the Park Areas and Facilities Standards and is based on the approach of a typical park system. Communities vary greatly by size, needs and desires; so too should their park and recreation agencies' offerings. The average community should have at least 9.9 acres of parkland per 1,000 residents or one park for every 2,281 residents served. But park and recreation agencies are as diverse as the communities that they serve. Therefore, we need benchmark data to identify the best practices best to serve our community.

City of El Campo Parks Master Plan 2021- 2031

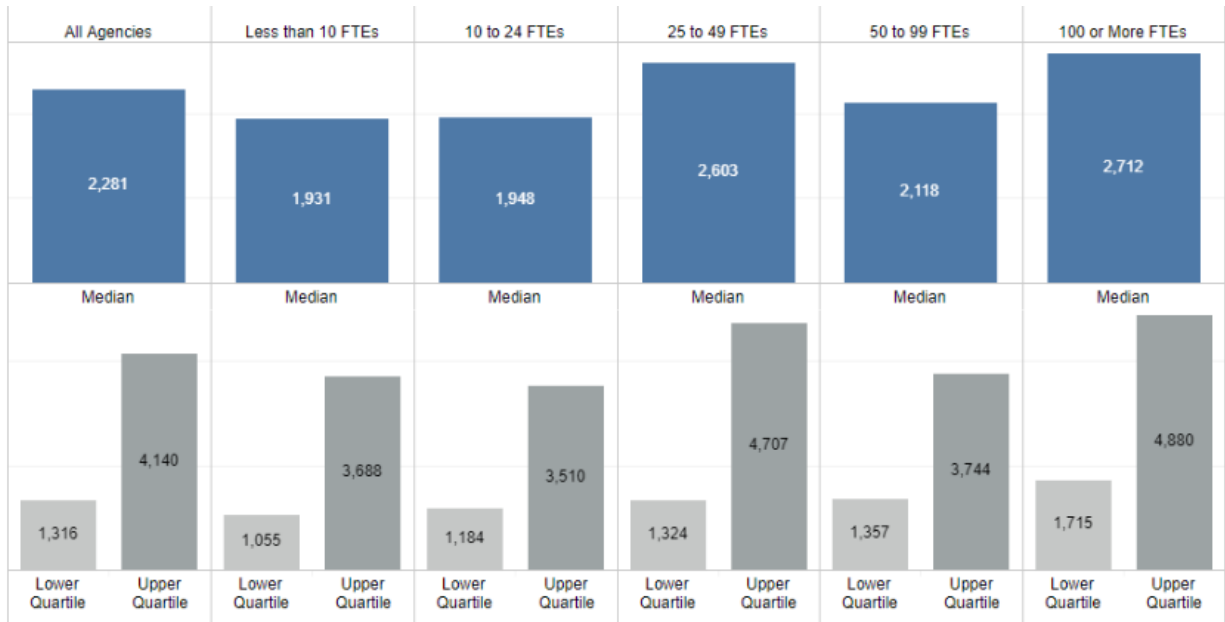
Performance Reviews:

The following performance reviews are typical and include findings based on population, budget and geographic location. El Campo's population density and budget specifies 1 park per 1,300 residents or 8.9 parks for our community.

The El Campo Park system consists of parks and recreation centers ranging in size from ½ acre to a 60 acre master planned park, El Campo Aquatic Center and El Campo Civic Center. Comprised of 5 community parks , 1 neighborhood park (ECHA), 2 mini parks (Alamo and Evans), 1 open/greenspace and 2 facilities. Parks and recreation has become an even more fundamental part of our daily life. It will be even more imperative that we ensure equitable access to these cherished spaces and programs in the months and years to come. The El Campo Public Works Parks Division Operation and Maintenance policy was developed by the Department of Public Works in 2020 to address the maintenance aspects of the parks and recreation facilities to include the needs of all visited amenities.



City of El Campo Parks Master Plan 2021- 2031



www.NRPA.org/APR

*Findings from the 2020 Agency Performance Review uses data from Park Metrics, NRPA's park and recreation agency performance benchmarking tool, from 2017-2019.



The Budget and FTE (Full Time Equivalents) personnel also will dictate the feasible maintenance aspects of parks. The more parkland, the more FTE that are needed to maintain the quality-of-service citizens will enjoy. Parks that are not taken care of are detrimental to community engagement and will lead to low park usage.

There is a nationwide average of 8.1 FTE per 10,000 population. At 11,602 El Campo would need 9.3 FTE's to sustain this average.

We currently have 6 FTE's in the Parks Division to cover 122.8 acres of Groundskeeping and landscaping and a budget of \$391,618.00 (the National average is \$941,966) and an additional 34.265 acres of city owned maintenance responsibility for a total of 158.575 acres.

City of El Campo Parks Master Plan 2021- 2031

2020 NRPA Agency Performance Review Key Findings



Agencies that ban the use of tobacco products at parks and facilities

76%

Full-Time Equivalent Employees (FTES) Per 10,000 Residents:

8.1



Operating Expenditures Per Capita:

\$81.19/year

Manages **11.0** miles of walking, hiking, running and biking trails



88%

of park and recreation agencies offer themed special events to the public



54%

of park and recreation agencies deliver STEM programming to children and young adults



Residents Per Park:

2,281



Revenue-to-Operating Expenditures:

25.9%



82% of Adults surveyed agree, parks and recreation are considered an essential local government service to its community. During the early covid-19 pandemic, 96% of agencies kept parks and trails open and throughout the pandemic 86% kept the parks open for safe, socially distanced activities, Including El Campo Public Works. Fair and just access to high quality park and recreation infrastructure is essential to creating healthy, resilient, and economically vibrant communities that is obtainable and sustainable.

City of El Campo Parks Master Plan 2021- 2031

Community Surveys

The 2010 community Survey also took into consideration the needs and wants for the Parks system. The top results were:

- Increasing the Walking Trail system and expanding to other parks and non-park areas.
- Increase the number and diverse playground structures. 2015, 2017, 2020.
- Create unique recreational amenities such as Skatepark (2018), Disc Golf, Fishing pond (2015) and mini golf.
- Developing natural and environment restorative areas.
- Create a park Amphitheatre for community use.
- Develop special events to engage the public.
- Develop a maintenance and operations manual to address parks maintenance. (2020)
- Make Wi-Fi and internet available at city parks.
- Create a Dog Park area within a park system.

In the past decade, a new park has been built, 3 park playgrounds have been ADA upgraded, a skatepark has been added, and engagement programs like food truck night, Catfish Kid fish tournaments, Movie night in the park and Farmer's market have seen success.

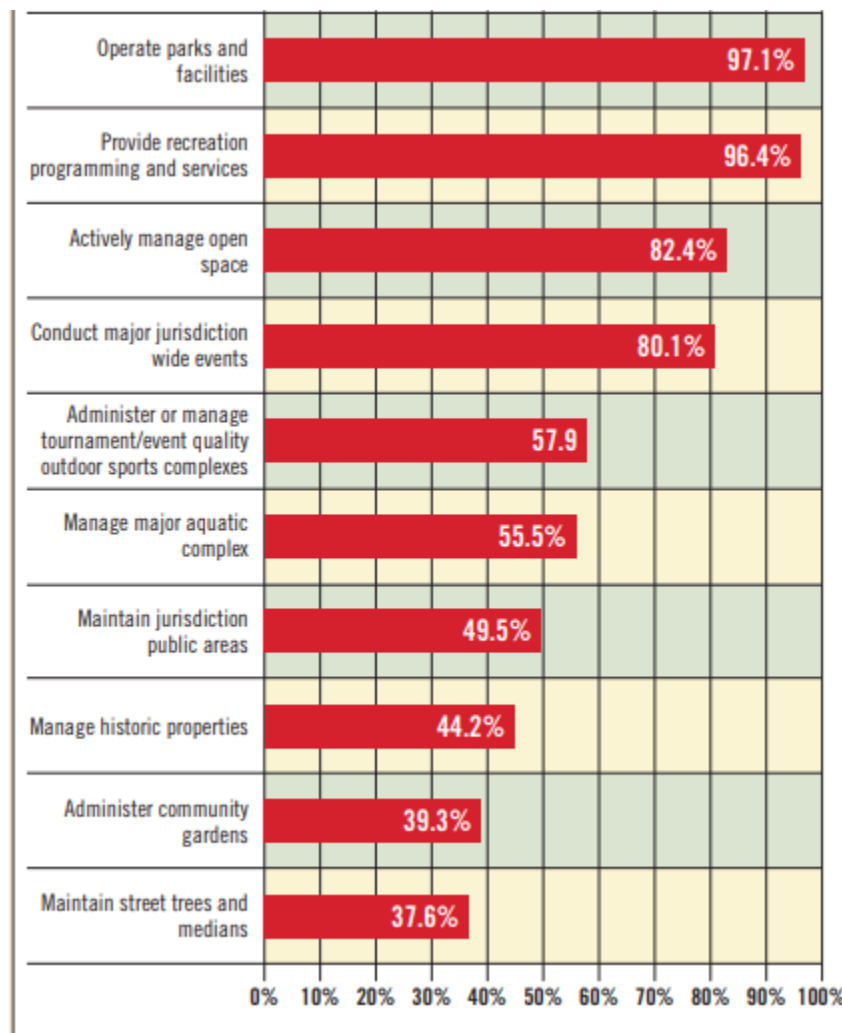


City of El Campo Parks Master Plan 2021- 2031

El Campo Public Works is building on past directives and adding new ones. Including Developing a Public Works Parks Management and Operations Manual in 2020.

Thriving parks and park programs depend on public consensus. Consensus that park land is valuable enough to preserve and maintain for public use- and that the array of services park agencies provide is essential to the common good. Most Americans, when surveyed, express positive feelings about parks and all that they represent. Historically, however, parks and recreation professionals have had few concrete, performance-related facts, and industry standards to offer the public. The profession must be armed with data-data that show in hours, participants, acres, dollars, and cents the value that parks, and recreation agencies offer at every jurisdictional level. Traditionally, parks and recreation agencies have been defined by their dual roles of managing parks and running recreational facilities and programs. While department profiles indicate that those continue to be the two most common roles for park agencies, responses also reflected a wide range of typical duties, including caring for and conserving open spaces, managing major sports or aquatic complexes, assisting in historic preservation, and overseeing community gardens. See Table 1.

Table 1. Parks Division responsibilities nation wide.



City of El Campo Parks Master Plan 2021- 2031

El Campo Public Works Parks

The El Campo Public Works Parks Division (ECPW PD) oversees 7 park sites and 4 service facilities, along with El Campo Housing Authorities Delta St. Park with a total of 124.31 acres, this total does not include all city owned Facilities, only facilities frequented by the public for recreational use. Based on the 2020 inventory, the ECPW PD Park Matrix reflects the current inventory of parks, their acreage, classification, and amenities: as shown in Table 2. The City of El Campo currently is providing 10.71 acres/1,000 population, which meets the NRPA recommendation of 6.25-10.0 acres/1,000 population. However, the Public Facilities Maintenance acres as well as the City right of way maintenances of these sites are not included in the overall acreage inventory, the new total is 158.575 acres. As shown in Table 3.

Each ECPW PD Team Member is responsible for 26.42 acres per week. NRPA Median average is 11-15.5 acres per employee. See Table 4.

NRPA survey has shown that a city of our population, budget and acreage should have an average of 7-9 employees in the parks division. Table 5.

Table 2. Public recreation facilities

Location/Description	Acreage	Classification	Baseball/ softball/ soccer/ volleyball	Basketball I Courts	Tennis Courts	Pavilions	Playgrounds	Walking Trail miles	Fitness stations	Picnic Tables / benches	Water Fountains	Column2
Evans Park	1.4	Mini	N	N	N	Y	N	N	N	Y	N	
Alamo Park (all)	1.899	Mini	N	N	N	Y	Y	N	N	Y	N	
Second Street Park	3.55	Neighborhood	Y	Y	Y	N	Y	N	N	Y	N	
Friendship Park	25.99	Community	Y	N	Y	Y	Y	0.89	Y	Y	Y	
Willie Bell Park	15.37	Community	Y	Y	N	Y	Y	0.25	N	Y	Y	
Legacy Park	55.7	Community	Y	Y	N	N	Y	NA	N	Y	Y	
Rotary Park	13.219	Community	Y	N	N	Y	Y	0.55	Y	Y	Y	
City Hall	0.35	facility	NA	NA	NA	NA	NA	NA	NA	Y	Y	
Civic Center	0.821	facility	NA	NA	NA	NA	NA	NA	NA	Y	Y	
OPSB Green Space	0.69	facility	NA	NA	NA	NA	N	NA	NA	Y	N	
Aquatic Center	3.22	facility	NA	NA	NA	NA	Y	NA	Y	Y	Y	
Delta St Park ECHA	2.1	Housing Authority		Y								
Total Park land Acreage	124.31											

Figure 3. Other maintenance duties.

Animal Shelter	0.068
Stockyard (Jackson and S Wharton)	0.75
City Entrance: US 59 and US 71	10.154
City Entrance: US 59 and FM 960	6.125
City Entrance: US 59 and W Bus 59S Hwy	4.873
Total Time	
Ave G & Jackson *	0.503
Landfill	10
Olivia St Lift Station	0.287
Sandy Corner Lift Station	0.127
West Norris Lift Station	0.679
Lilly St Lift Station	0.3706
	158.57

City of El Campo Parks Master Plan 2021- 2031

Table 4. Full time employees needed for maintenance and operations.

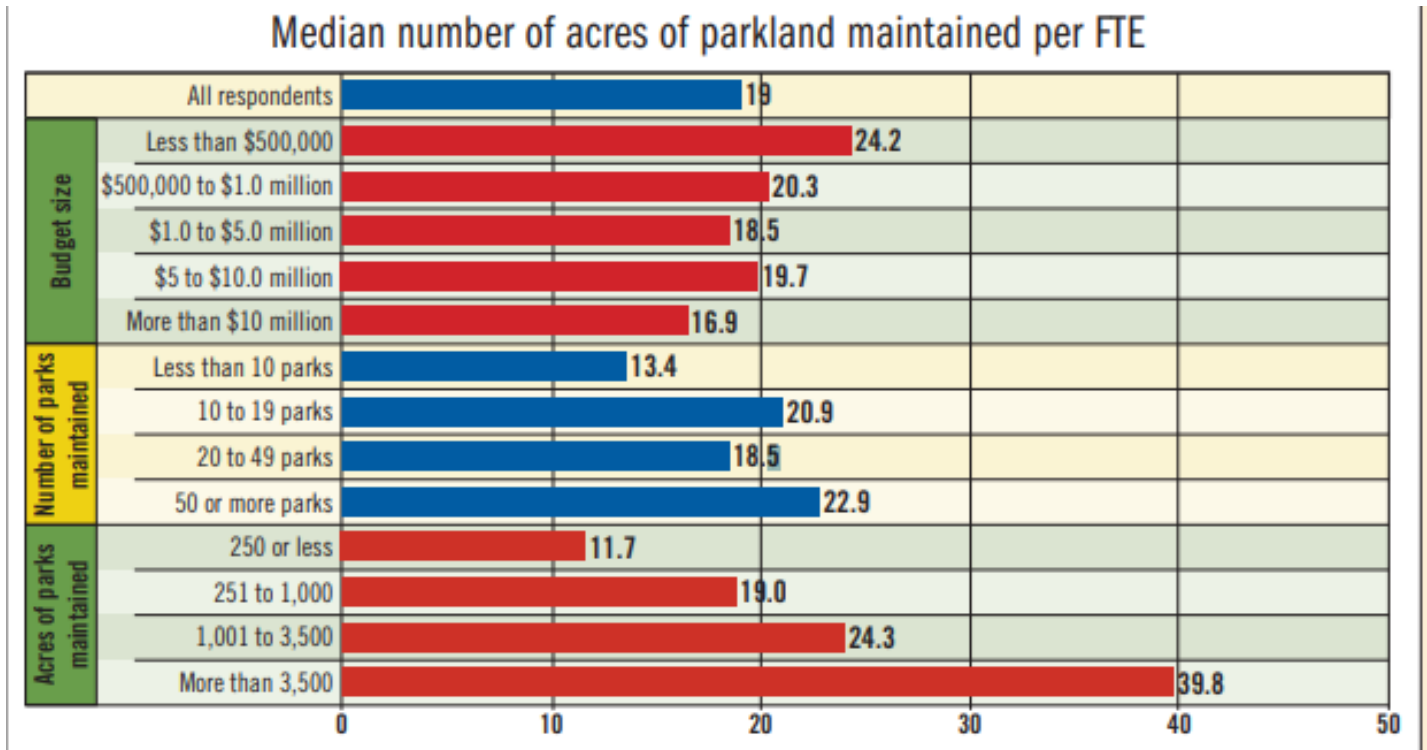
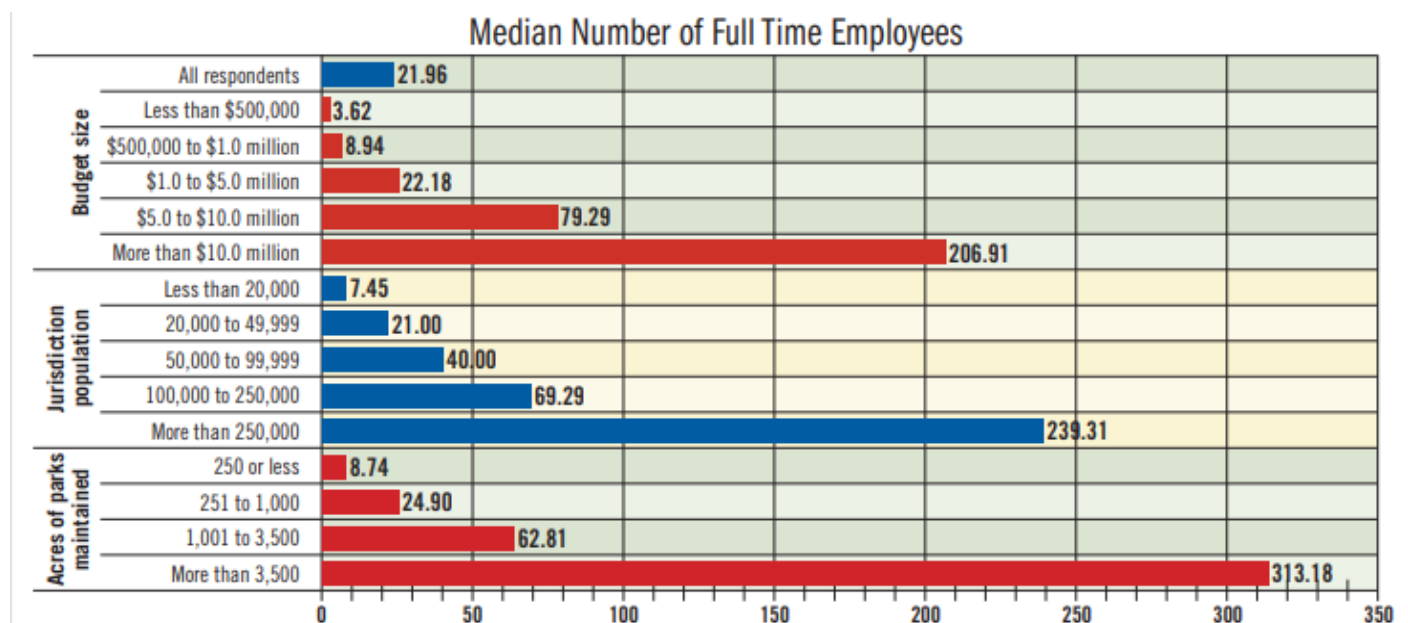


Table 5. Median number of FTE needed by budget, population, and acreage

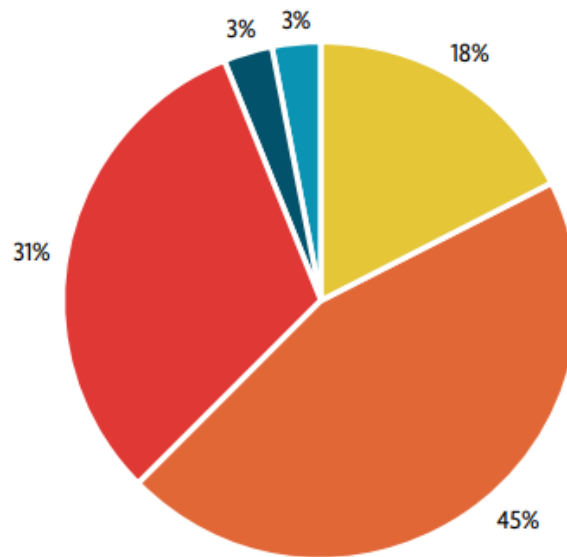


City of El Campo Parks Master Plan 2021- 2031

Recreation Dynamics

These dynamics, outlined here, represent both opportunities and challenges for the field of parks and recreation—and, in some cases, they create sharp conflicts with accepted practices. A prioritized action plan is the basis for the City of El Campo Parks Master plan to address parks use, operations and facilities.

45%	Operations/Maintenance
31%	Programming
18%	Administration
3%	Capital Development
3%	Other



City of El Campo Parks Master Plan 2021- 2031

El Campo Park System.

Classification of Parks

NRPA states “A park system, at a minimum, should be composed of a ‘core’ system of park lands, with a total of 6.25 to 10.5 acres of developed open space per 1,000 population.” In addition, as a means of organizing the open space facilities, the park sites are classified according to a NRPA hierarchy that provides for a comprehensive system of interrelated parks. These NRPA guidelines and definitions serve as a good baseline for determining a minimum standard for park; however, they are refined to address the needs of the users of the El Campo Park System.

Mini Park The smallest type of park, mini parks are mainly designed to serve a concentrated population or a specific age group or function, but they can serve persons of all ages located in the immediate area. Another term “pocket park” has also been used to identify mini parks in recent years. They are designed for a ¼-mile radius of service and are 1.5 acres or less in size. The park is generally a walk-to type park, meaning no parking facilities for automobiles are normally found. Their primary purpose is to provide recreation to residents where major roads do not have to be crossed. The amenities provided can center on play apparatus for young children; however, some include passive activities for adults and seniors depending on the needs of the surrounding neighborhood. Other amenities typically include gazebos, benches, scenic overlooks, picnic tables, and ornamental landscaping. Mini park service levels are 0.25 to 0.5 acres per thousand residents.

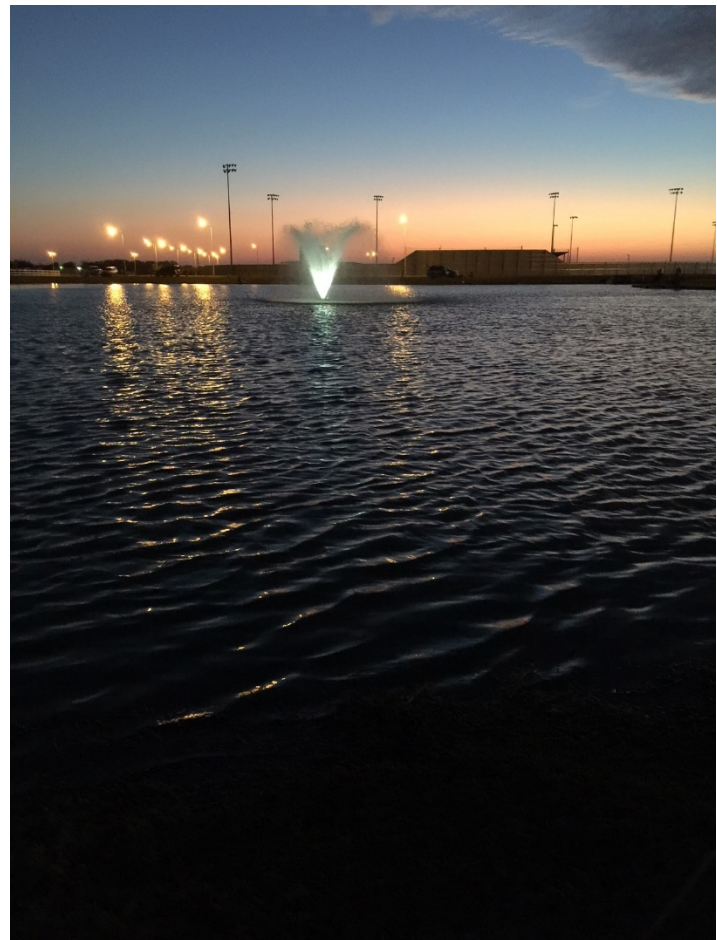
Neighborhood Park Neighborhood parks form the foundation of the park district and serve as the recreational and social focus of the neighborhood. They generally range in size from 5 to 10 acres; however, due to the available land within the park district as well as the amenities provided sites as small as two acres in size can be appropriate for a neighborhood park. Neighborhood parks are designed for a ¼ to ½ mile radius of service. Concentrated intense recreation activities are common in these parks and they are usually designed within a limited amount of space. These parks serve residents in a variety of age groups. The park should be easily accessible, and access should be uninterrupted by major roads or other barriers. Typically, neighborhood parks do not provide off street parking; however, parking is usually necessary due to the scope of activities and size. Neighborhood park service levels are 1.0 to 2.0 acres per thousand people.

Community Park Community parks are diverse in nature, serving a broader purpose than the neighborhood or mini parks. They are larger than neighborhood parks and are intended to serve several neighborhoods. Community parks usually have both day and evening activities which can result in lighted fields and amenities. Community parks include a mix of active and passive activities and attract users of all ages. Large play structures, baseball diamonds, football fields, soccer fields, hiking trails, and swimming pools can all be part of a community park. The service area for such a facility can vary based upon the size and scope of activities offered; however, a park of this type may serve 50,000-80,000 people or 5-8 acres per 1,000 people. Community parks generally range in size from 15 to 50 acres. However, due to available land area, sites

City of El Campo Parks Master Plan 2021- 2031

over 10 acres in size can be appropriate to accommodate such activities. These parks are designed for a 1 to 3-mile radius of service and usually serve two or more neighborhoods. They are also easily accessible by multiple modes of transportation with on-site parking available.

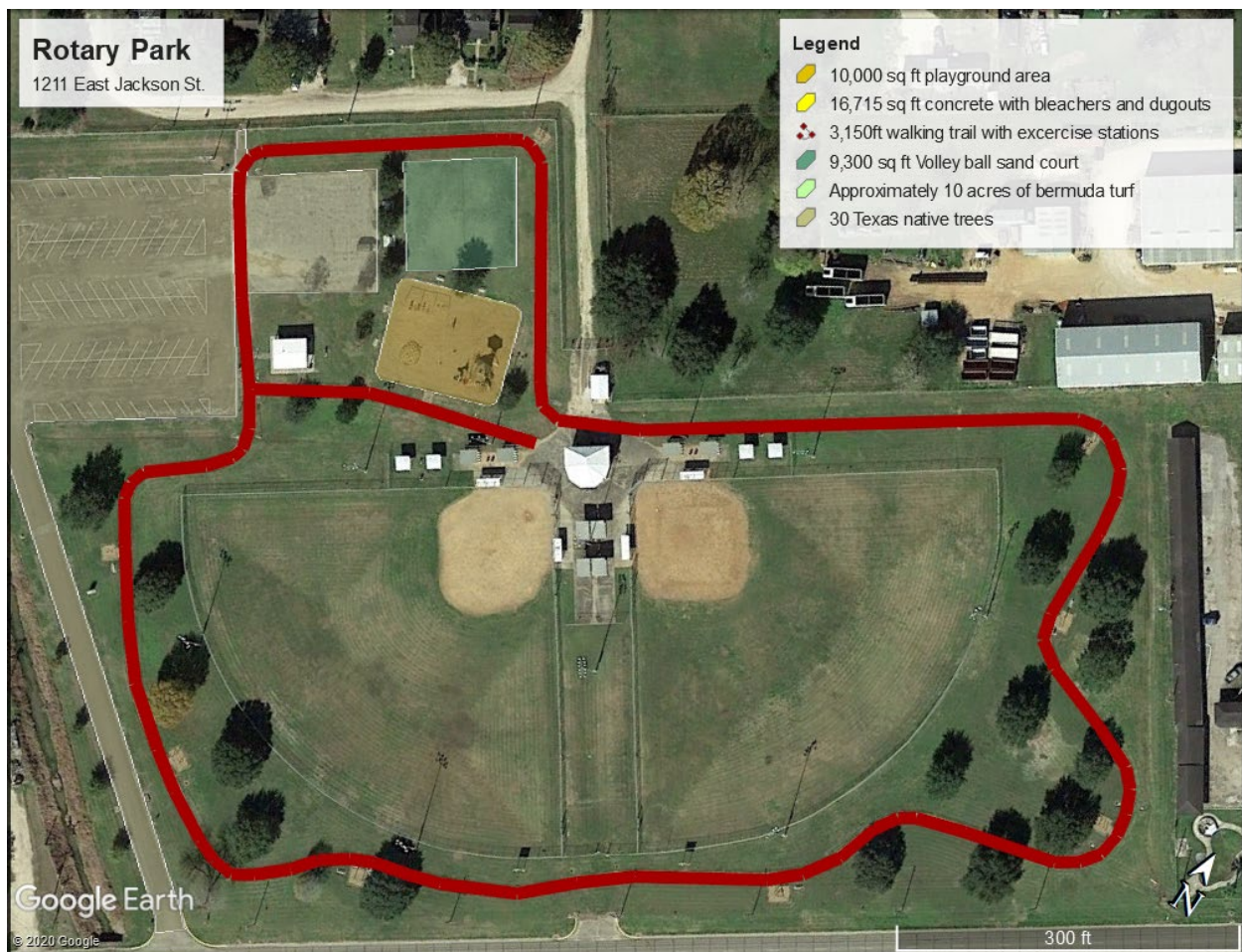
Community Parks: Willie Bell Memorial Park, Legacy Park at Legacy Fields, Rotary Park, Friendship Park **Mini parks:** Evans Park, Alamo Park. **Neighborhood parks:** Delta St. Park (ECHA), City Park. **Facilities:** El Campo Aquatic Center, El Campo Civic Center. **Open space:** City Hall Greenspace.



City of El Campo Parks Master Plan 2021- 2031

Park Inventory:

Rotary park- 1211 E. Jackson, Community Park built in 1992, Two (2) lighted softball fields with press box and concession stand, covered pavilion with picnic tables and restroom facilities. Two (2) lighted volleyball courts. One half mile jogging trail with exercise stations, playground equipment on 13.7 acres. Security cameras and walking trail lighting. Native Landscape along the Blue creek drainage and approximately 10 acres of Bermuda turf for the greenspace elements and softball fields. ADA Approved Engineered wood fiber on all playgrounds for inclusive play for all.



Action Plan: Update and add recreation equipment, renovate walking trail, update/renovate the exercise stations along walking trail, enhance security, update and repair concession and press box siding and windows. Create a native landscape plan for the playground area. Re-configure the sports recreation area to incorporate lawn games in place of unused and outdated amenities. Volleyball courts are rarely used. Tether ball court as an alternative. renovate and repair pavement areas. Make internet available. Traffic study for attendance and use.

City of El Campo Parks Master Plan 2021- 2031

Friendship Park- 1202 N. Wharton Community Park Having 25.9 acres of open space with a .80-mile walking/Jogging path and a 400 ft access path. (4,589 ft X 8 ft wide) 4,079 sq. yds of trail between Wharton Street and Training Field Road. Friendship Park was dedicated on September 25th, 1973 and construction was initiated in 1977 as a Bureau of Recreation Project. At approximately 26 acres, Friendship Park is one of the largest parks in El Campo, the field space of native Bermuda grasses, St. Augustine grass and indigenous field grass is in highly utilized for soccer and baseball practices and field games. It includes 22 BBQ pits 34 covered picnic tables, playground with ADA engineered wood fiber, 2 pavilions with electricity, M/W bathrooms, 2 volleyball courts, 4 tennis court, skatepark, lighted jogging/walking path, 2 drinking water fountains and open play areas.



Action Plan: Update and renovate the restrooms. Restroom Structure needs attention, possibly replacement. Update and expand recreational equipment, install shade structures, and rest areas on exposed areas along the walking trail and for open space use, create a plan to utilize the skatepark structure, Reuse tennis court as Pickle Ball alternative Update the landscaping to include restorative areas for patrons to enjoy. Enhance Security by adding cameras, Wi-Fi, Reclaim and restore the walking trail and parking areas. Perform a traffic study to provide a census of attendance.

City of El Campo Parks Master Plan 2021- 2031

The Park at Legacy Fields – 303 West Loop. Community Park. El Campo's newest park. 26.25 acres of park land with a 3.4-acre section playground and a 3.5-acre pond amenity of the 60-acre Master Plan tract, is a handicap accessible playground in El Campo, TX. The park contains all the traditional park elements including picnic benches, swings, and restrooms. Designed upon an agricultural theme to honor the importance of agriculture in the El Campo area with a Kiddy Coral for 2-5-year-old, a custom maze and an ADA accessible area for 5-12-year-old. The custom maze features consist of a board walk, swing bridge, truck tires, traverse wall, and rope climbing. Another unique feature are hay bale climbers which were designed and built specifically for this park.



Action Plan: Design and implement a walking trail around the park and pond using a walking bridge design, design and implement an outdoor Amphitheatre for community use, install a boardwalk around the pond, Install shade structures and benches for open spaces and walking areas. Add security cameras. Wi-Fi Add electrical network for lighting to entrance, walkways, and signs. Create restorative areas along the pond area for family use. Tree and landscape inventory. Perform a traffic study to provide a census of attendance.

Willie Bell Memorial Park- 720 west second St. Community Park Dedicated and renamed in 1985 to Honor Willie Bell, a local baseball legend. The 14.5-acre park is in a residential neighborhood located on the south side of El Campo. The Park is used for Field Sports, Soccer and Baseball and has a covered lighted Basketball Court. Other amenities include a playground with 1,175ft walking trail, a volleyball court and a 1,250 Sq Ft event pavilion. Concrete picnic tables and restrooms. Improvements to the park have been identified in the Comprehensive plan for El Campo to address the existing and future needs of the community.



19

City of El Campo Parks Master Plan 2021- 2031

Alamo Park- 226 West First street. Mini Park 1.96-acre park with playground and pavilion. Park usage for downtown festivities and benefit BBQ drives. Site of the prairie days annual event.



Action Plan: install irrigation system improvements, new benches, improve sidewalks around the park. Lighting upgrades. Security Cameras and Wi-Fi, Tree, and landscape inventory

City of El Campo Parks Master Plan 2021- 2031

Evans Park- 100 E. Monserrate Mini Park 1.4 acres of wooded site. 1,170 square foot covered lighted pavilion, a small covered sitting area, decorative water fountain, decorative pole lights and meandering walkways for downtown visitors. Site of Downtown events. Food Truck diner night, Christmas wonderland display, Block events.



Action Plan: Lighting upgrades, update and repair central Fountain and install more benches for restorative areas. A Need for Bathrooms to enhance the events and add value to downtown visitors. Maintain the wooden structures. Security Cameras, Wi-Fi, Speaker system for Music year-round. Tree and landscape inventory.

City of El Campo Parks Master Plan 2021- 2031

City Park. Acquired in 1975 as a Bureau of Recreation project-606 West Second St. A 3.5-acre small community park with an open-air Basketball court, small playground area with a bench, asphalt paved parking areas.



Action Plan: pavement update. Install shade structure. Add more benches and tables with covered shade structures. Tree inventory and traffic study

City of El Campo Parks Master Plan 2021- 2031

City Facilities- El Campo Aquatic Center, El Campo Civic Center and City Hall Greenspace.

CH Greenspace 303 East Jackson. Developed at the former Police station/Fire Station 29,500 Sq Ft of open space. Bermuda Turf and Texas native Plants landscape area.



Action Plan: Create landscaping plans on all city owned facilities, Wi-Fi and Security Cameras install benches for employees and visitors.



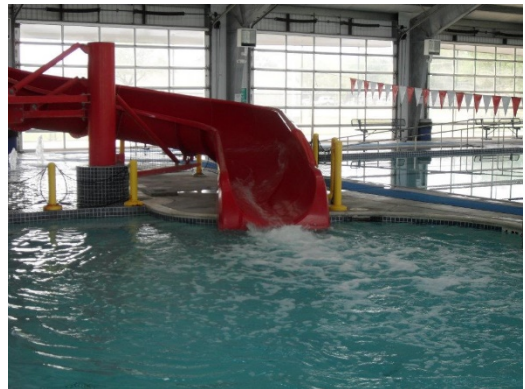
Landscape plan 2019

Action Plan: *Create more restorative areas for visitors including shade structures, Wi-Fi, and seating.*

City of El Campo Parks Master Plan 2021- 2031

El Campo Aquatic Center- 2613 Blossom Meyer.

The El Campo Aquatic Center Facility, opened in January 2005, is a large indoor facility with three heated bodies of water: 2 full time employees and 30 part time lifeguards during summer months. An average of 200 attendees per day during summer months, a majority from out of town. An 8-lane by 25-yard lap pool, 20-person spa and a leisure pool that includes an 85-foot water slide, mushroom and dump bucket, water sprays and floating pads. Because it is open six days a week and is the only public swimming facility in El Campo, it is highly utilized year-round for both recreational and competitive swimming. El Campo High School, El Campo Red Wave summer swim team and Special Olympics host swim meets at the ECAC. The facility also offers water aerobics classes, and the El Campo Memorial Hospital physical therapy department uses the leisure pool for patients with aqua therapy prescriptions from their physician. ECAC is also the practice facilities for Columbus High School, Wharton High School, National Guard, and Splashway.



Action Plan: Create Landscape Plan and exterior bench seating. Consider expanding to allow more room for parties and swim meets. Build exterior splash pad for parties and residents. Security cameras installation. Parking lot exterior lighting upgrades

City of El Campo Parks Master Plan 2021- 2031



El Campo Civic Center- 2350 N. Mechanic – The El Campo Civic Center Facility contains over 40,000 square feet of indoor space. The Civic Center features five rooms plus a commercial kitchen available for rent for events, meetings, weddings, showers, and more.

Action Plan: *Landscape planning and Exterior Seating. Pavement Maintenance, parking lot Lighting upgrade and Maintenance, outdoor patio upgrades, exterior painting, More security cameras.*

City of El Campo Parks Master Plan 2021- 2031



Delta Street Park: 1303 Delta St. a 3.65-acre park on El Campo Housing Authority property. A neighborhood park with a backstop, 2 basketball courts and 2 football field goals. Owned entirely by the housing authority. Not part of a city acquisition or required to be city property.

City of El Campo Parks Master Plan 2021- 2031

Prioritized Action Plan

These action plan findings are the basis of developing a vision statement that charts the general course of the plan, identifies assets that need to be maintained, what needs to be changed, and how the plan will be accomplished and sets forth a series of goals, objectives, and recommendations to implement the vision.

The prioritized action plan describes priorities related to new or upgrades to existing:

- **Facilities** – including parks, open space system, greenways, recreation and community special-use facilities, or active transportation infrastructure (e.g., trail systems, bikeways, or shared-use paths)
- **Recreation programs** – such as recreation activities, classes, fitness and wellness programs and equipment, special events, and/or community festivals
- **Management and operations** – including implications for staffing levels, service levels, budgeting, capital improvements, maintenance plans, and technology improvements.

The action plan includes a matrix that describes the programs/projects, location, cost estimates, funding strategies and potential sources of funding, and year(s) of implementation. In addition, the action plan provides a timeline, and strategic initiatives for the next five years. Best management practices are used for managing and operational, and for instituting performance measurement programs.

This master plan is designed to serve as a decision-making tool for local government officials to help set priorities for implementation and to provide a high level of parks and recreation services. The City of El Campo Parks, Recreation and Community Services Board should be involved in the master planning process and has a major role in advancing the plan for adoption.

The general cost estimates developed as part of the prioritized action plan will help identify capital expenditures. Council should consider preparing a capital budget either as part of the annual operating budget or a separate process.

Personell additions, training, certification and equipment are essential to continued success. The parks division is in need of a Certified Playground Safety Inspector (CPSI) to make sure the safety of park patrons are ensured. Additional responsibilities need additional personell to help take care of the assets of our parks. These are part of the Action plan.

City of El Campo Parks Master Plan 2021- 2031

Action Plan Summary for the 2021-2031 Master plan

Friendship Park: Update and renovate the restrooms. Restroom Structure needs attention, possibly replacement. Update and expand recreational equipment, install shade structures, and rest areas on exposed areas along the walking trail and for open space use, create a plan to utilize the skatepark structure, Update the landscaping to include restorative areas for patrons to enjoy. Enhance Security by adding cameras, Wi-Fi. Reclaim and restore the walking trail and parking areas. Dog Park Area, Transform Tennis Courts to Pickle Ball Courts, Disc Golf areas Perform a traffic study to provide a census of attendance.

Legacy Park: Design and implement a walking trail around the park and pond using a walking bridge design, design and implement an outdoor Amphitheatre for community use, install a boardwalk around the pond, Install shade structures and benches for open spaces and walking areas. Add security cameras and Wi-Fi. Add electrical network for lighting to entrance, walkways, and signs. Create restorative areas along the pond area for family use. Tree and landscape inventory. Dog Park area Perform a traffic study to provide a census of attendance.

Willie Bell Memorial Park: Renovate restrooms, update playground equipment, stabilize and pave parking lot and entrance road, update and lengthen the walking trail, add lighting along the walking trails. Install shade structures for the open space recreation areas. Include more benches and restorative mini-park areas. Security cameras and Wi-Fi, Disc Golf alternative. Dog park area Tree and Landscape inventory. Perform a traffic study to provide a census of attendance.

Rotary Park: Update and add recreation equipment, renovate walking trail, update/renovate the exercise stations along walking trail, enhance security, update and repair concession and press box siding and windows. Security and Wi-Fi. Create a native landscape plan for the playground area. Re-configure the sports recreation area to incorporate lawn games in place of unused and outdated amenities. Volleyball courts are rarely used. renovate and repair pavement areas. Traffic study for attendance and use.

Alamo Park: install irrigation system improvements, new benches, improve sidewalks around the park. Lighting upgrades. Security Cameras Wi-Fi. Tree and landscape inventory

Evans Park: Lighting upgrades, update and repair central Fountain and install more benches for restorative areas. A Need for Bathrooms to enhance the events and add value to downtown visitors. Maintain the wooden structures. Security Cameras Wi-Fi and Speakers for year-round music during events. Tree and landscape inventory.

City Park: pavement update. Install shade structure. Add more benches and tables with covered shade structures. Tree inventory and traffic study

Aquatic Center: Create Landscape Plan and exterior bench seating. Consider expanding to allow more room for parties and swim meets. Exterior splash pad for parties and residents.

Civic Center: Landscape planning and Exterior Seating. Pavement Maintenance, parking lot Lighting upgrade Maintenance, outdoor patio upgrades, exterior painting More security cameras

City Hall Greenspace: Create more restorative areas for visitors including shade structures Wi-Fi and seating.

Delta St Park: Housing Authority Property. Not part of a city acquisition or required to be city property.

CPSI: certified playground safety inspector.

Increase staff to 7 The typical parks and recreation division has an average of 8.1 Full Time Employees on staff for each 10,000 residents served in the community.

City of El Campo Parks Master Plan 2021- 2031

Community responses

Recreation Facilities:

Community resources have made suggestions of adding a splash pad, disc golf, pickle ball courts and a dog park area. More gathering areas, pavilions, and BBQ/ Grilling pits.

Event areas:

An Amphitheatre at legacy pond for community theatre and events like concerts and movie night, a completed walking trail and a boardwalk around the existing pond with benches and a walking bridge over the narrow end of the pond with direct access to the playground and parking lot. Expanding the walking trail at Willie Bell Memorial Park. Add large pavilions at major parks to serve as event centers. Addition of restroom facilities in the Evans park area to add value to the special events held there.

Service Additions:

A Comprehensive Landscape plan and tree inventory to direct staff on care and pruning schedules to incorporate into the 2020 operations and maintenance manual for Parks Division. Adding groundskeeping staff to the division and a Certified Playground Safety Inspector. Build on collaborative and co-production to service delivery for special events and recreation opportunities. Make Wi-Fi Available to park users. Create restorative areas and mini parks inside of existing parks. Look for property to use as mini parks in neighborhoods underserved or located away from parks systems. Replace water fountains with ADA sanitary bottle fillers and pet watering bowl fixtures.

Operations and maintenance, programming and administration are the main responsibilities of park and recreation workers.



City of El Campo Parks Master Plan 2021- 2031

Capital Improvement Objectives plans



Legacy Park is our newest park. The interest in this park is the highest. The annual Kidfish and seasonal baseball/softball tournaments create large gatherings. Some of the recommendations and additions are:

A 12,000 sq ft Amphitheater to bring school plays, movies in the park, places to hold public venues and concerts. Lighting and electrical to accentuate the beautiful back ground and park amenities. Estimated costs are around \$225,000 for construction, drainage, electrical and Earthen work. Extending the lighting and electrical have been needed.

A 75ft x 8 ft walk bridge to span the lagoon area of the legacy pond. \$125,000

Boardwalk to replace the small unusable/unsafe area with 1,100 ft of 5ft wide exterior recycled wood product . \$50,000 estimated construction cost.

A 1.1 mile walking/hiking trail to encompass the perimeter of the park. Solar lighting to light the way \$120,000.00 estimated at \$17-\$21/ft for a 6ft wide trail. Solar lighting TBD but about \$500/fixture

CIP projects together should be between \$650K and \$800K

The parking lot and entrances constitute 39,000sq yds of pavement to be maintained. Built in 2013 HMAC is best maintained with Slurry seal, micro surfacing and HA5 High density mineral bond @ a cost of \$3.75-\$4.55/SY the cost to maintain is between \$145,000 and \$180,000 for a life of 10-15 years.

City of El Campo Parks Master Plan 2021- 2031

Willie Bell Memorial Park is one the most utilized parks in El Campo. With 9.01 acres this community park is a large park. It hosts many celebrations, birthday parties, sports events, and reunions. Some of the recommendations and additions are:

Expanded walking trail: A ½ mile 8ft wide walking trail addition at a cost of \$52,000.

Add new shade structures and Picnic tables: 3- Shade structures and tables are \$5,200 each \$15,600.

Cost of improvements to Willie Bell Memorial Park = Estimated \$67,600.00

New restrooms: The Restrooms at Willie Bell are functional, but in outdated and in rundown condition. Remodeling the cinder block structure would be costly for a small improvement. Recommend replacement. Cost TBD

