

# The City of Horace

---

Looking ahead at 2023



**“HORIZONS EXPAND HERE”**



# What does that mean?

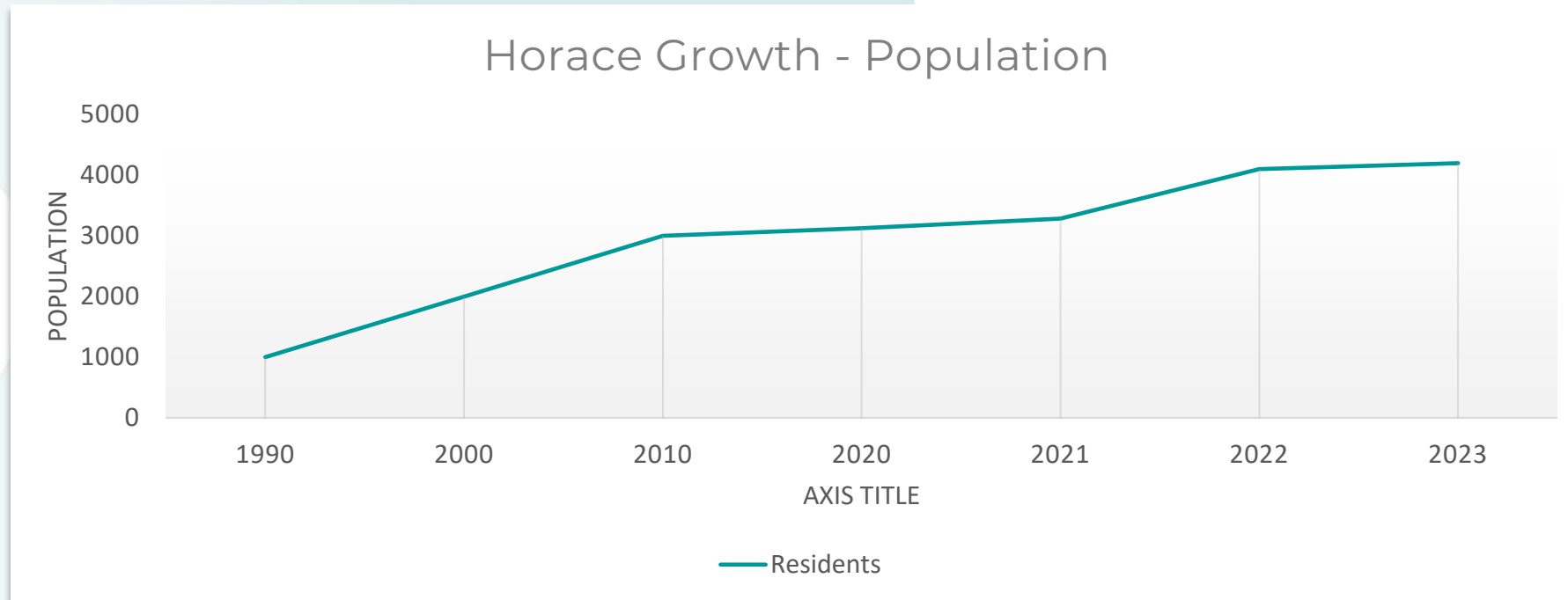
- Residents in Horace
  - Homebuilders
- Partners in transforming the Cit



# GROWTH



# Unprecedented growth and expected to rise



259% growth rate since 2000

Population of 4,200 in 2023



# Investing in Future Growth



# Infrastructure Developments

## Improvement Districts added in 2022:

- Arrowwood Third Addition
- Chestnut Drive and Ironwood Drive Rehabilitation (Planned Improvement District 2022-10)
- Cub Creek 2<sup>nd</sup> Addition (Improvement District 2022-11)
- Lost River 7<sup>th</sup> Addition (Improvement District 2022-2)
- Maple Lakes Addition Phase II (Improvement District 2022-5)
- Southdale Farms 4<sup>th</sup> Addition (Improvement District 2022-6)
- Southdale Farms 5<sup>th</sup> Addition (Improvement District 2022-7)



# Infrastructure Developments, continued

## Improvement Districts in 2023:

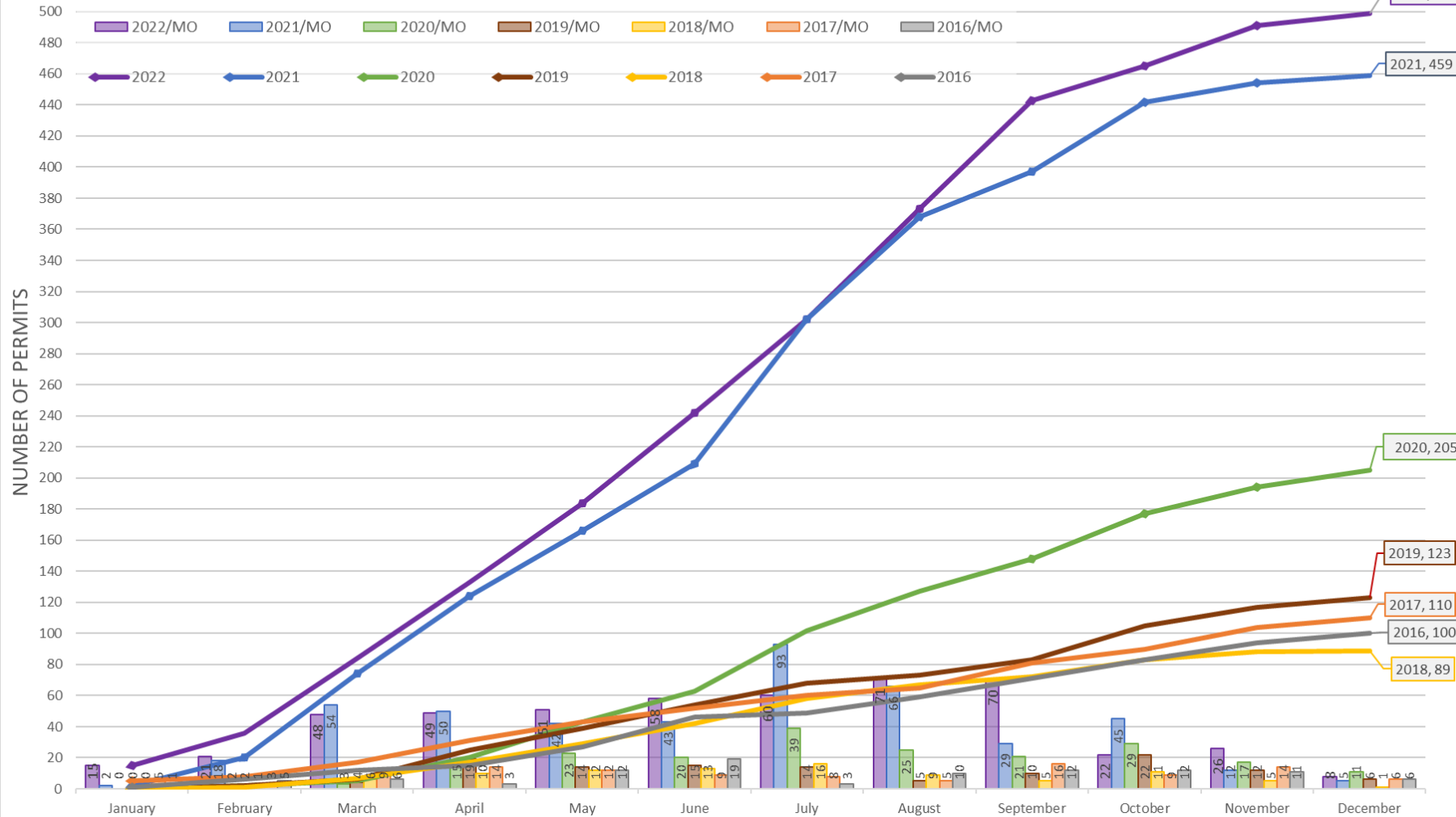
- 63<sup>rd</sup> Street (Improvement District 2022-9)
- 66<sup>th</sup> Street (Improvement District 2022-8)
- Cub Creek 2
- Deer Creek Estates Addition / Deer Creek Estates 2<sup>nd</sup> Addition
- River's Edge 2<sup>nd</sup> Addition
- Visto Addition – Industrial Drive and Frontage Road  
(Street Improvement District No. 2022-1)
- Wall Ave East – Sheyenne River to Cass Co. Hwy 17
- Wall Ave West – Sheyenne Diversion to Sheyenne River
- Willow Grove Addition
- *More to come...*







## December Year-to-Date Permit Total



# Building Permits Issued

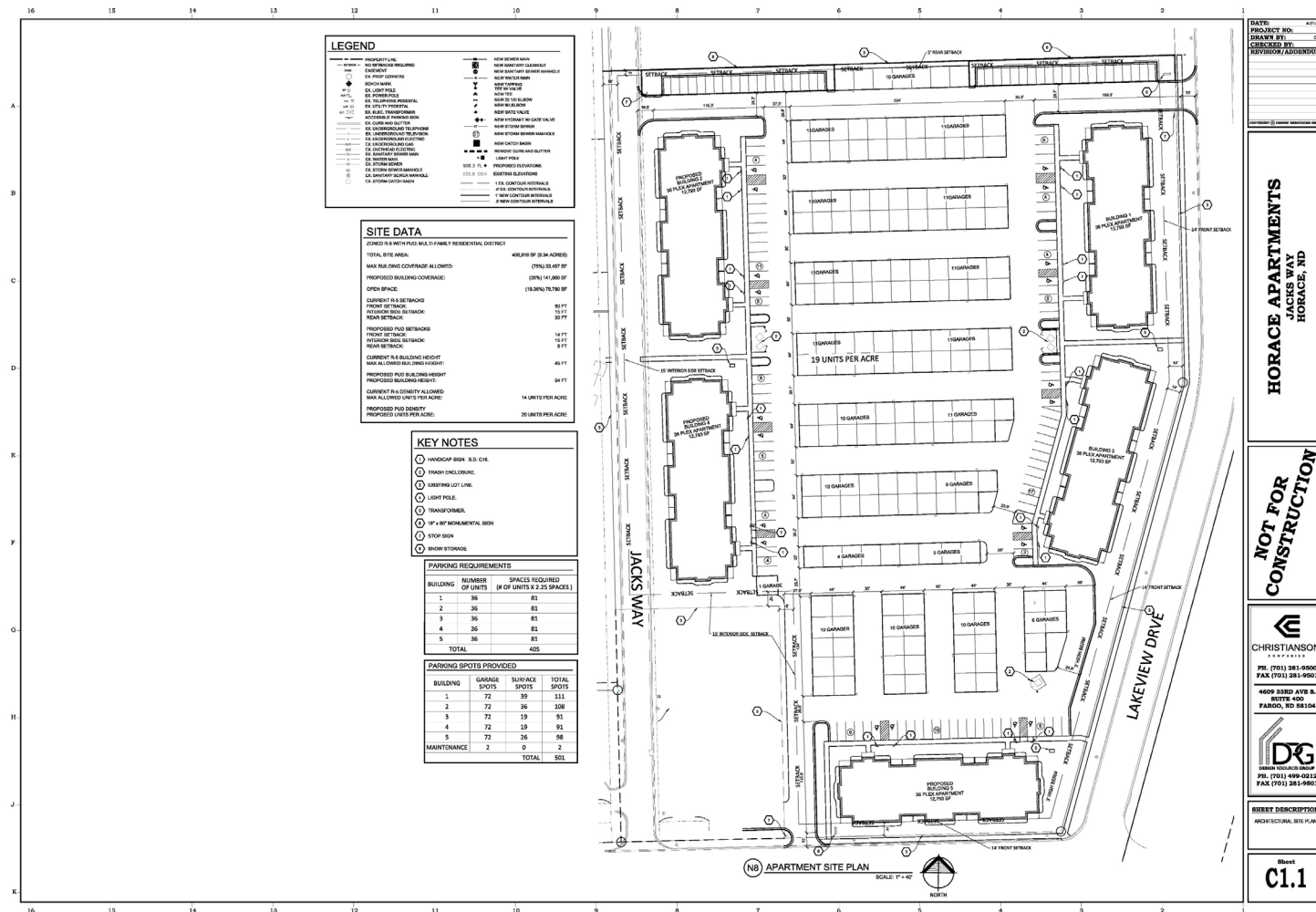


# New Businesses in 2022

- You Betcha
- Dairy Queen
- Sanford Health
- Medicine Shoppe
- ReadiTech
- *Upcoming: Headquarters Restaurant & Bar*



# Living in Horace



# 2023 Priorities







# Tree Program





# Connection to Cass Rural Water



Horace  
150  
YEARS  
1873-2023  
HORIZONS EXPAND HERE



Wall Avenue





# Horace: 150 Years



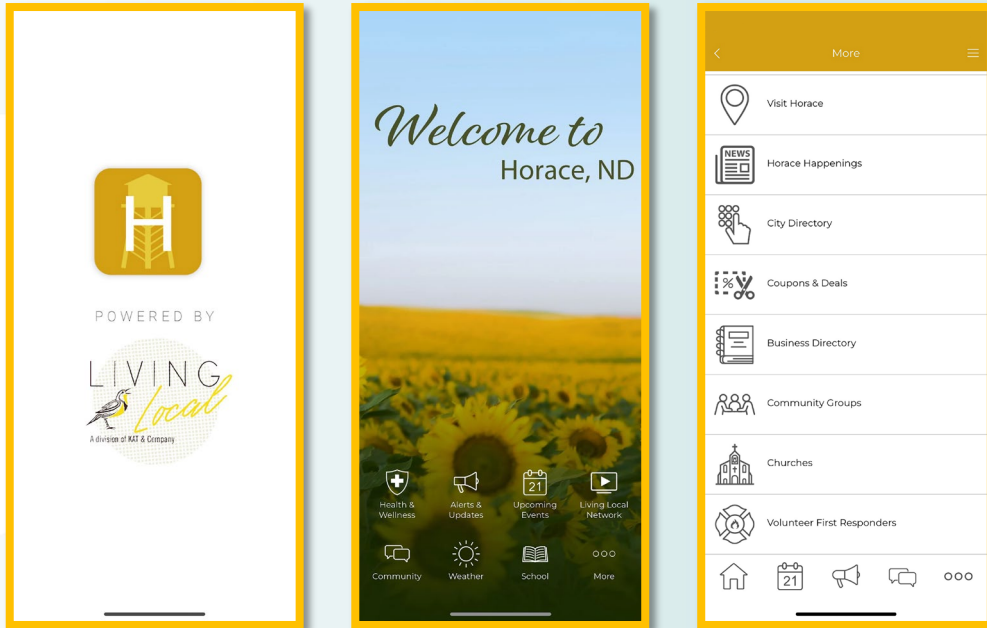
- Horace will celebrate its 150<sup>th</sup> birthday in 2023, better known as a *sesquicentennial*
- The event will take place on August 17-20
- The event will coincide with our annual Bean Days event



*Main Street, 1910*



# Connecting with our Community



Search for “Horace, ND”  
in your app store

The City of Horace has partnered with **LIVING Local**, a KAT & Company Bismarck-based developer to bring our growing community together.

[Apple App Store](#)  
[Google Play](#)



# Expand your horizons in Horace.

Find the possibilities of more, the opportunities of being better than expected, and a place to call home.



**OPPORTUNITIES ARE ENDLESS**

