

NO.	DATE	ISSUE/REVISION	APP.

PROJECT NAME:

SHEET NAME:  
SANITARY SEWER  
STANDARD DETAILS

DATE:  
SEPTEMBER 2022

CREATED BY:  
CITY OF EDINBURG ENGINEERING DEPARTMENT

DRAWING SCALE: N.T.S.

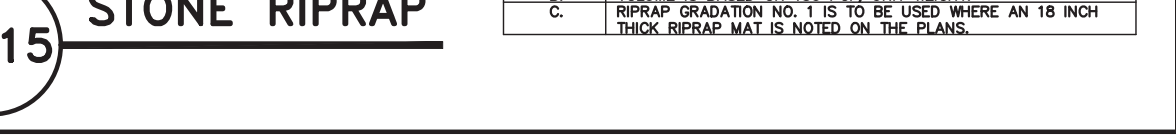
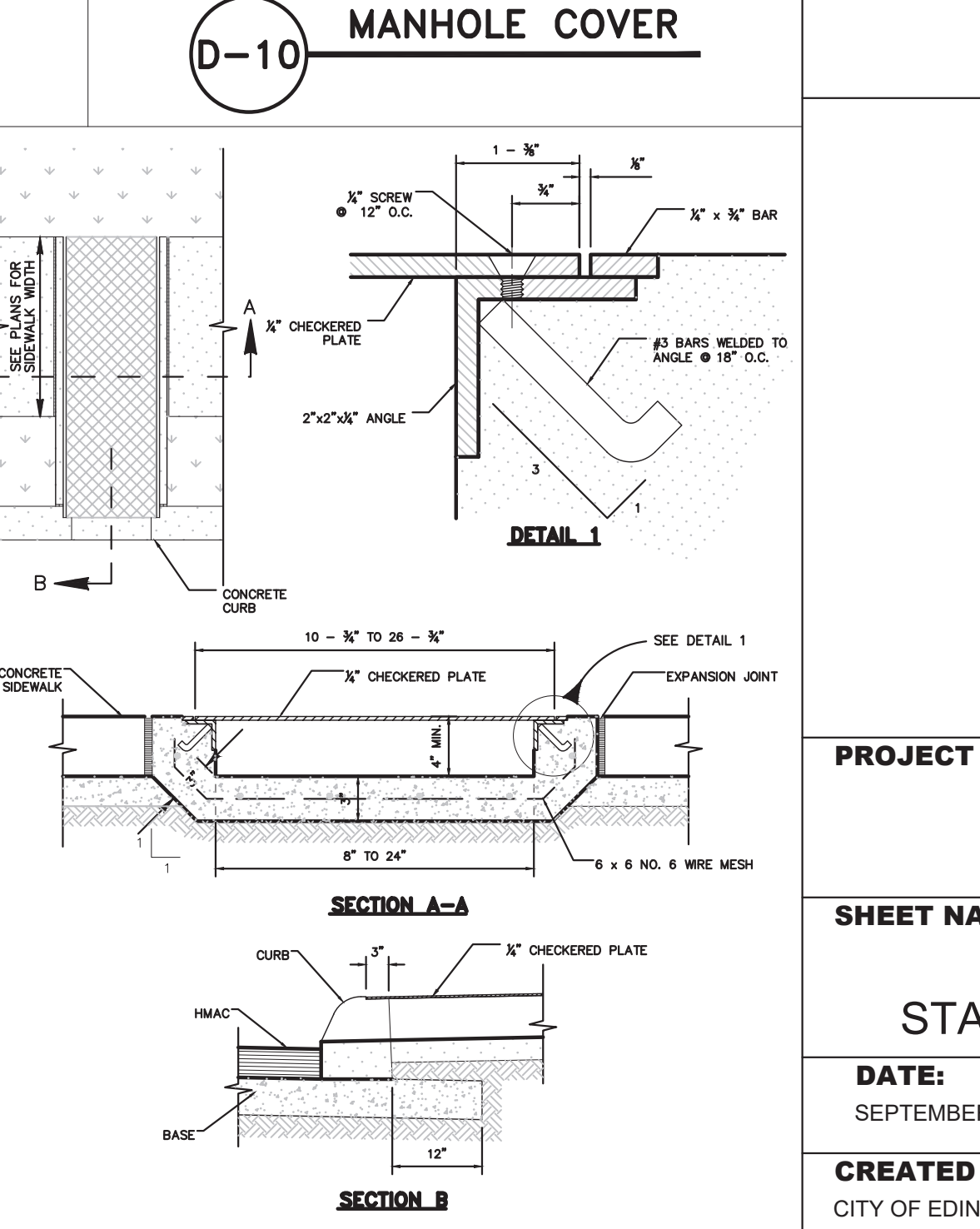
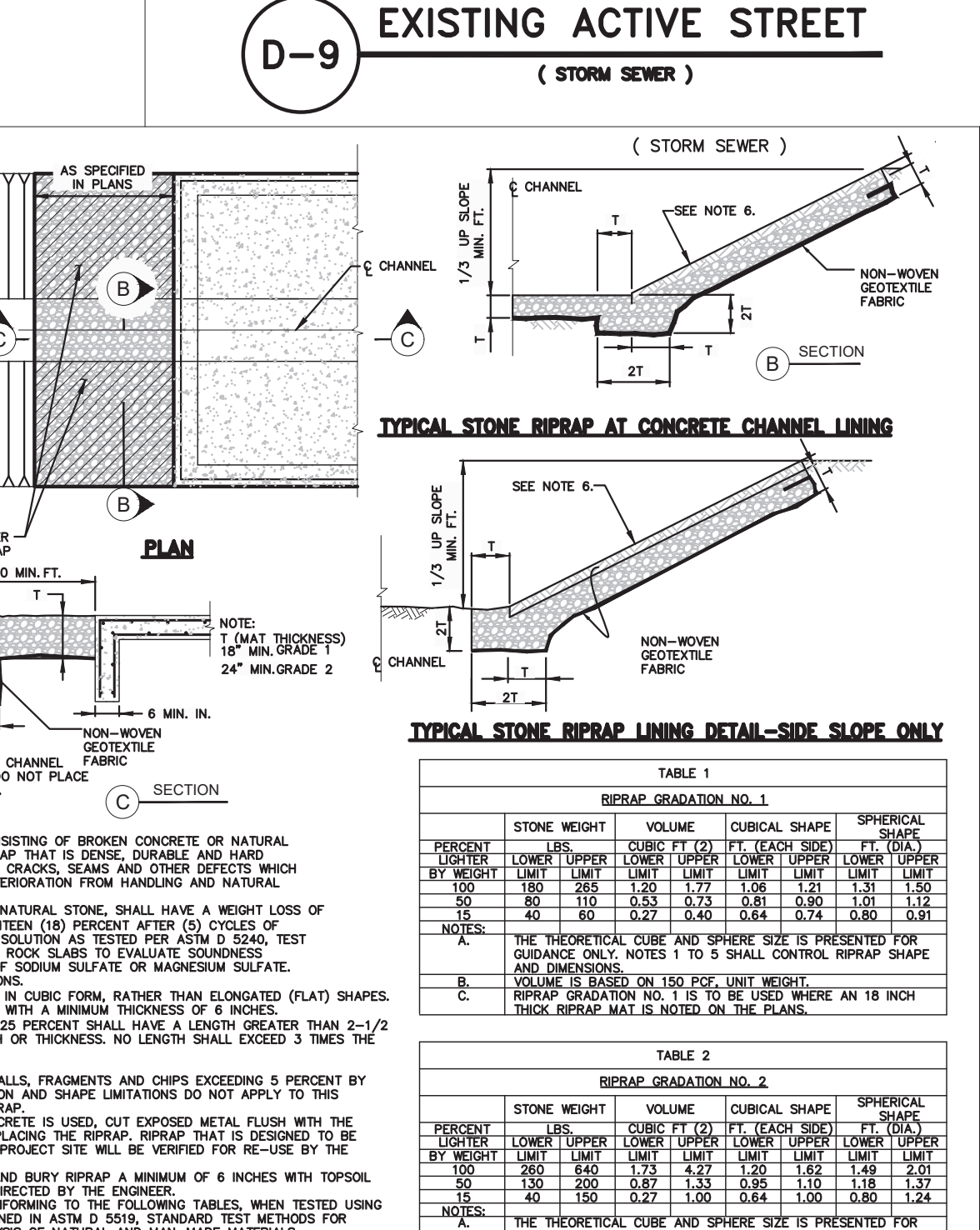
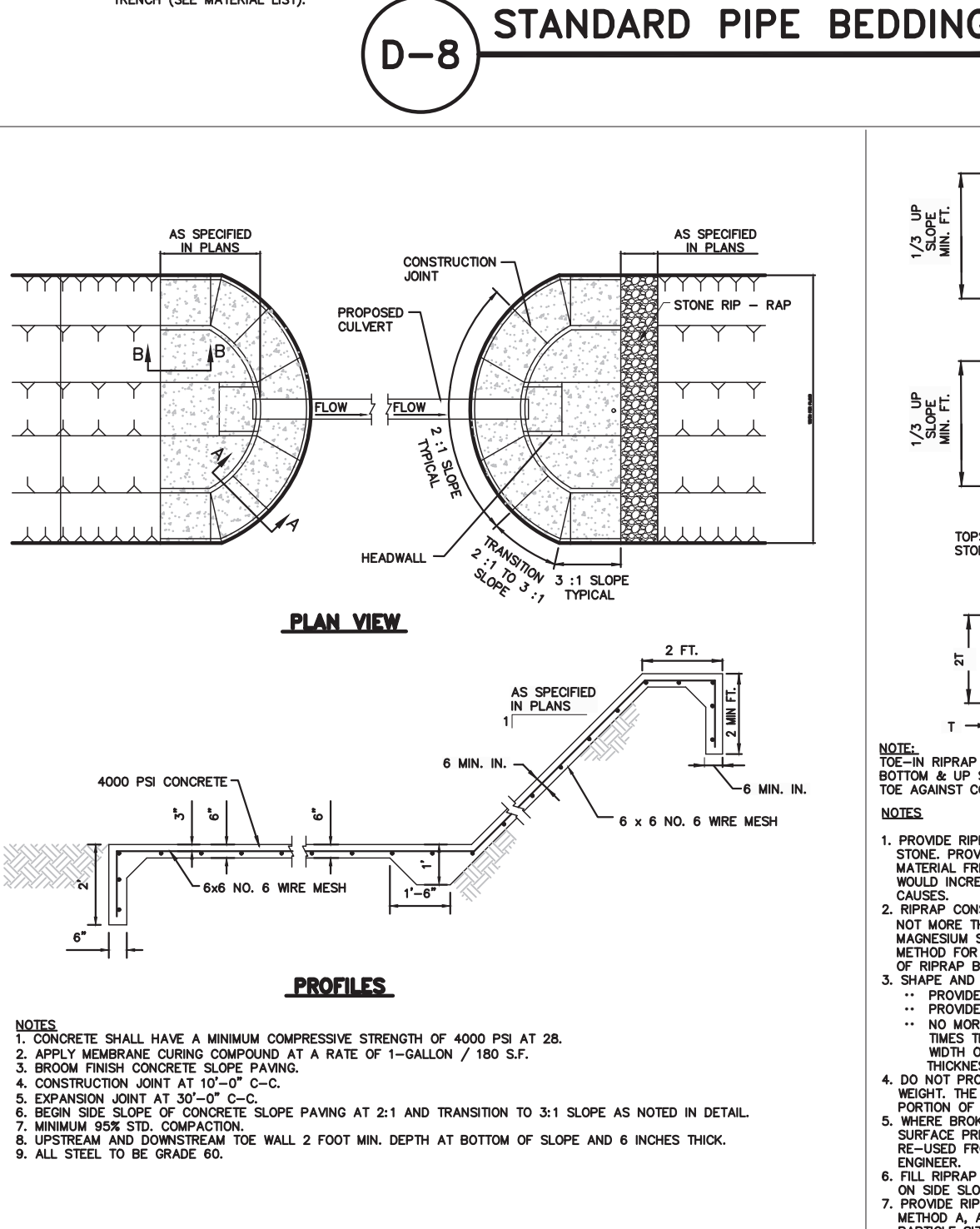
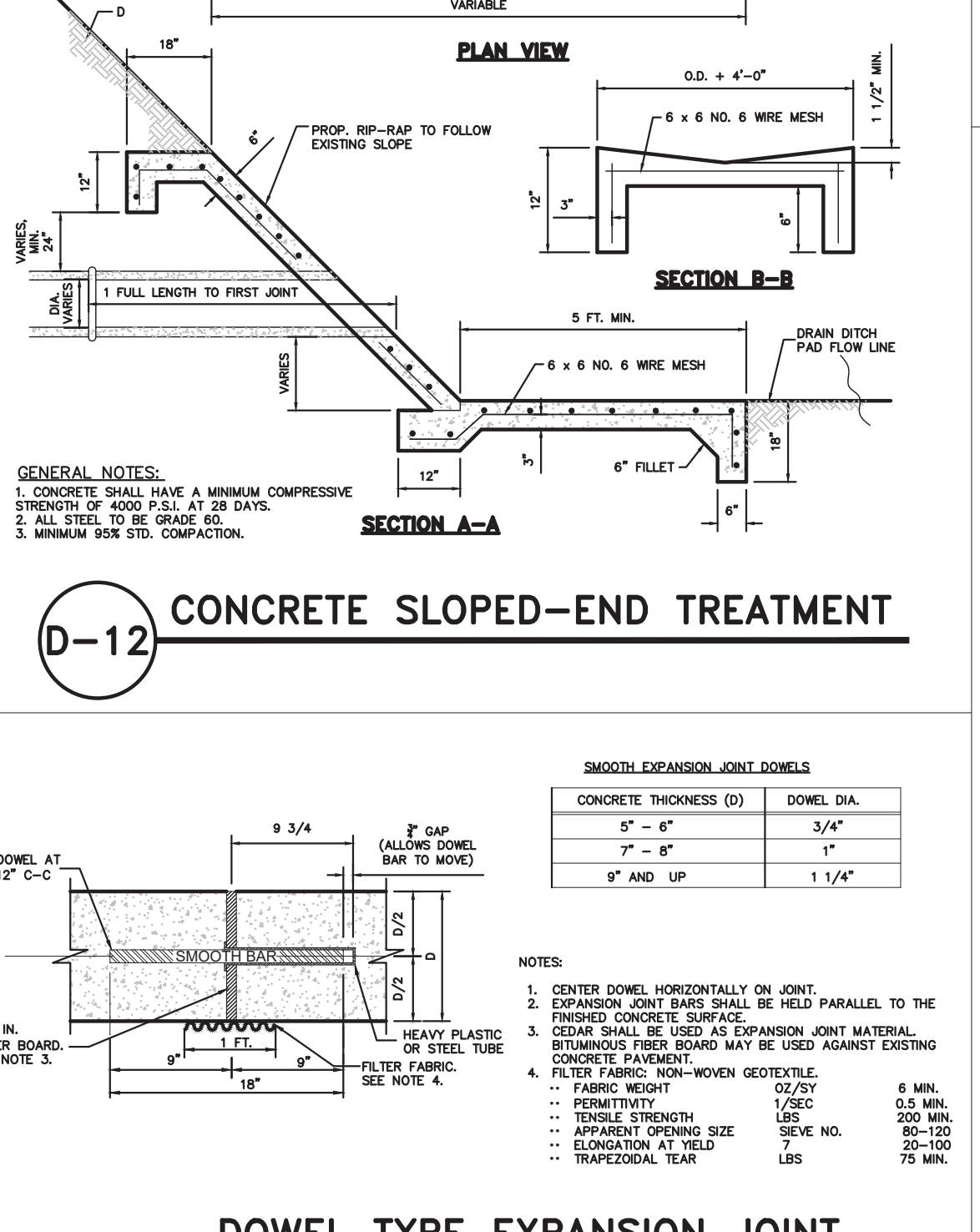
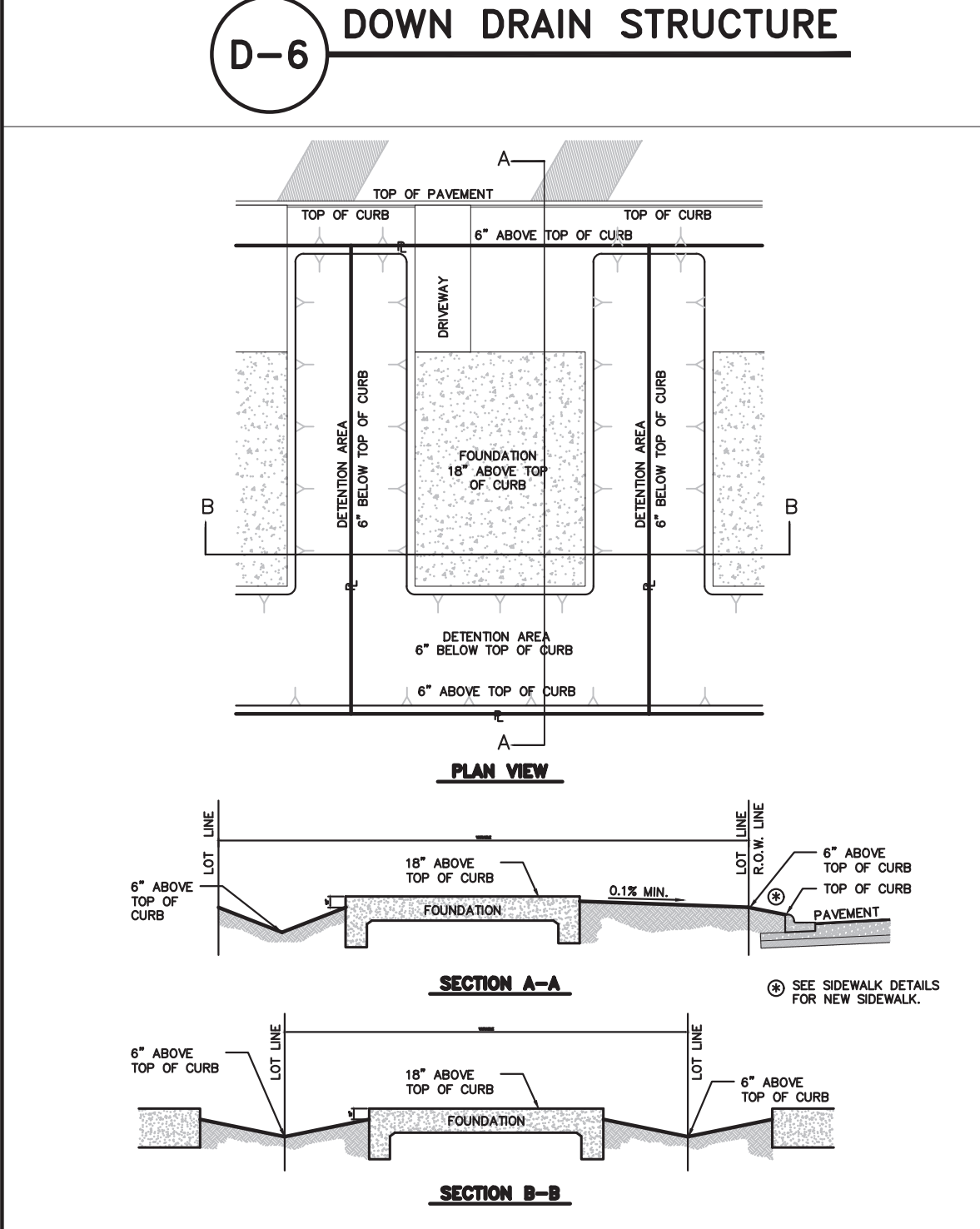
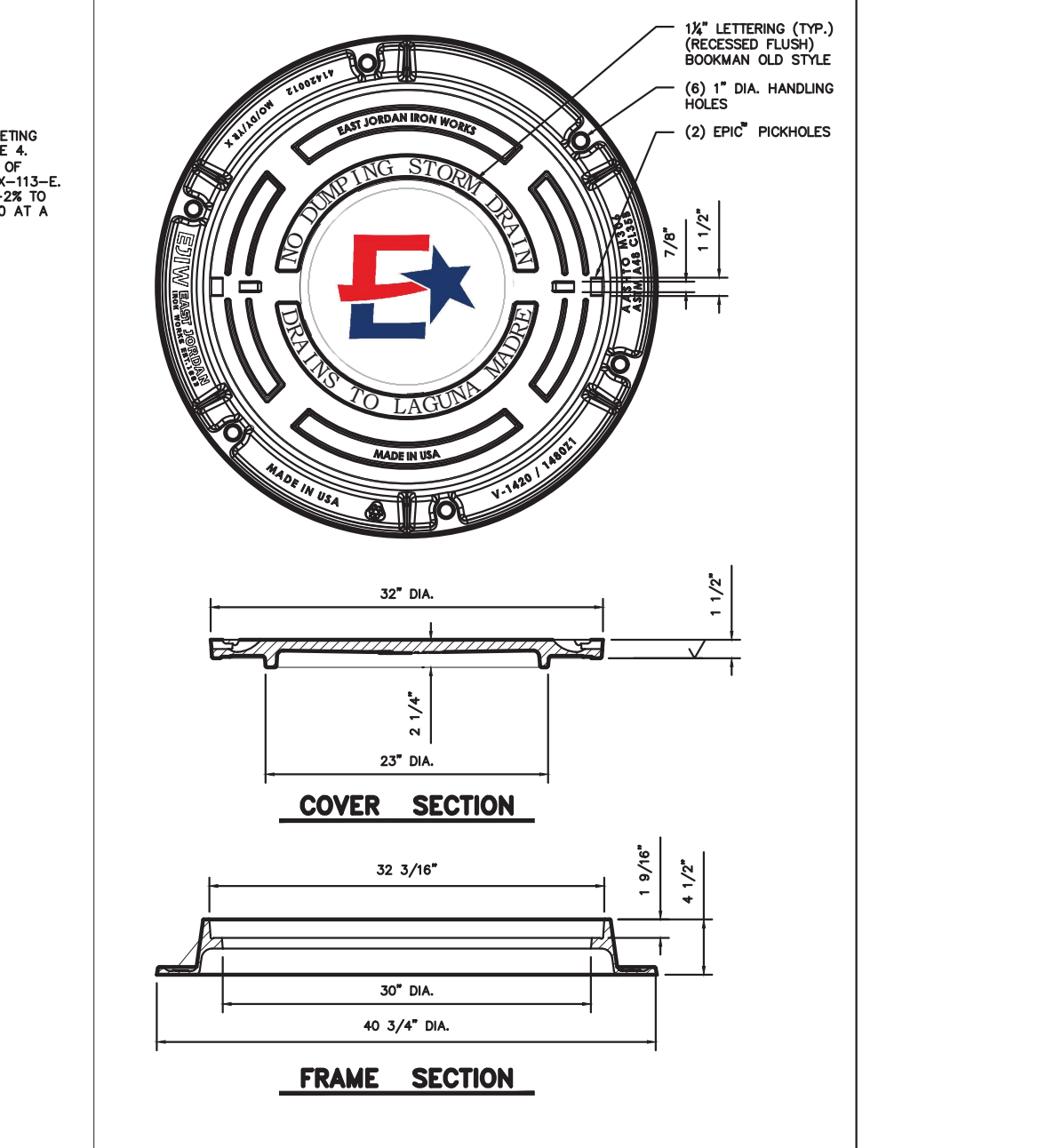
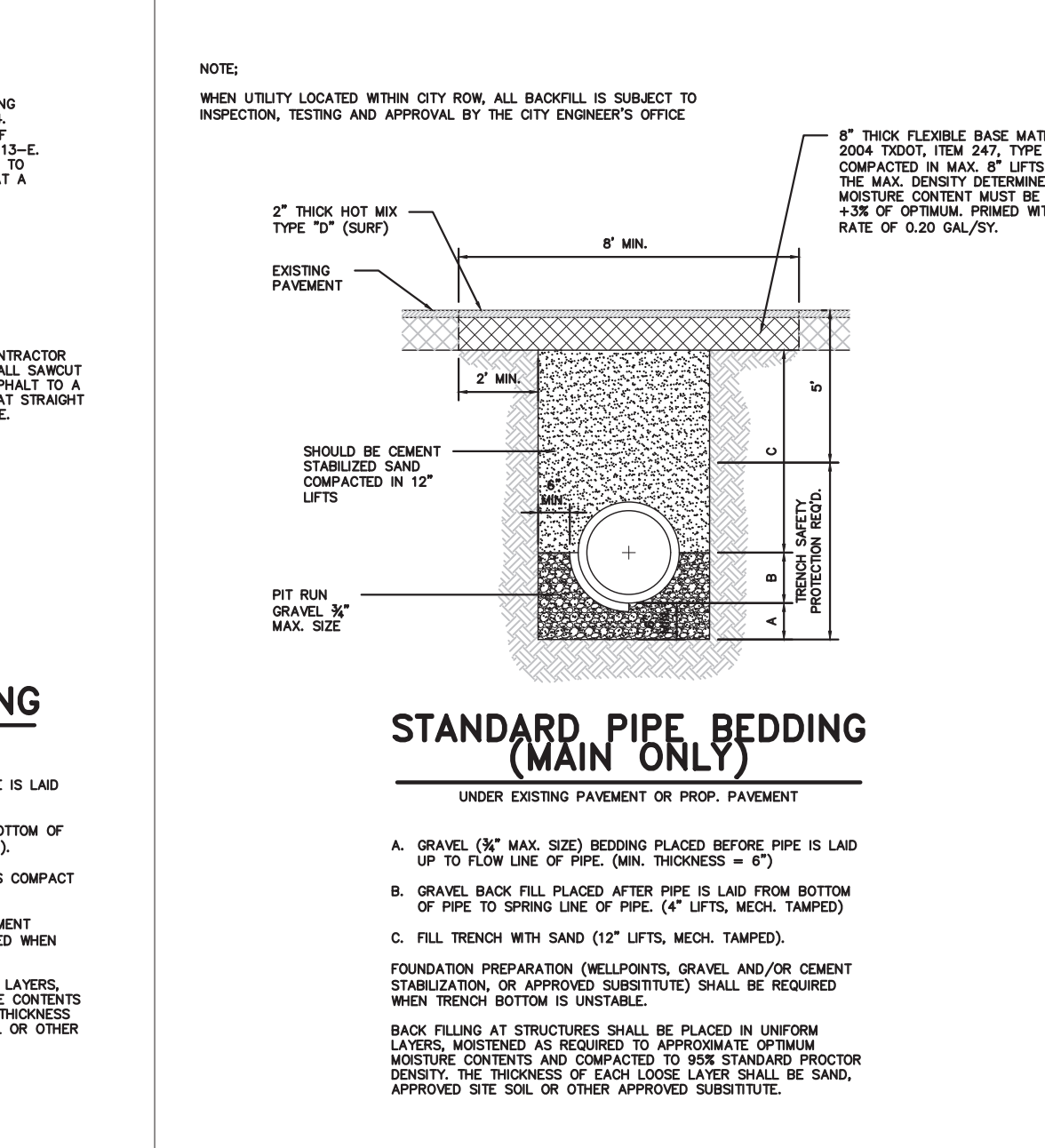
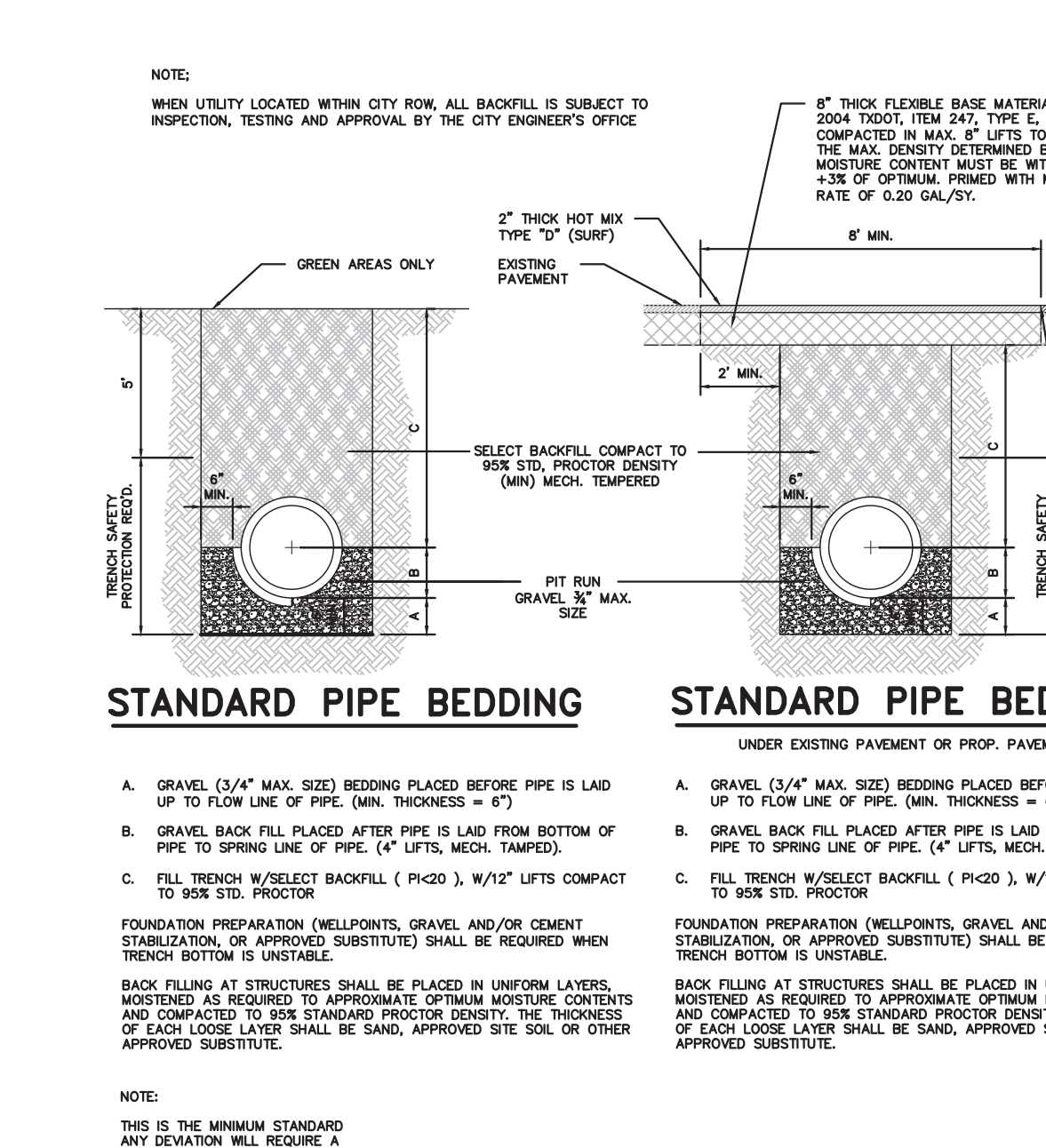
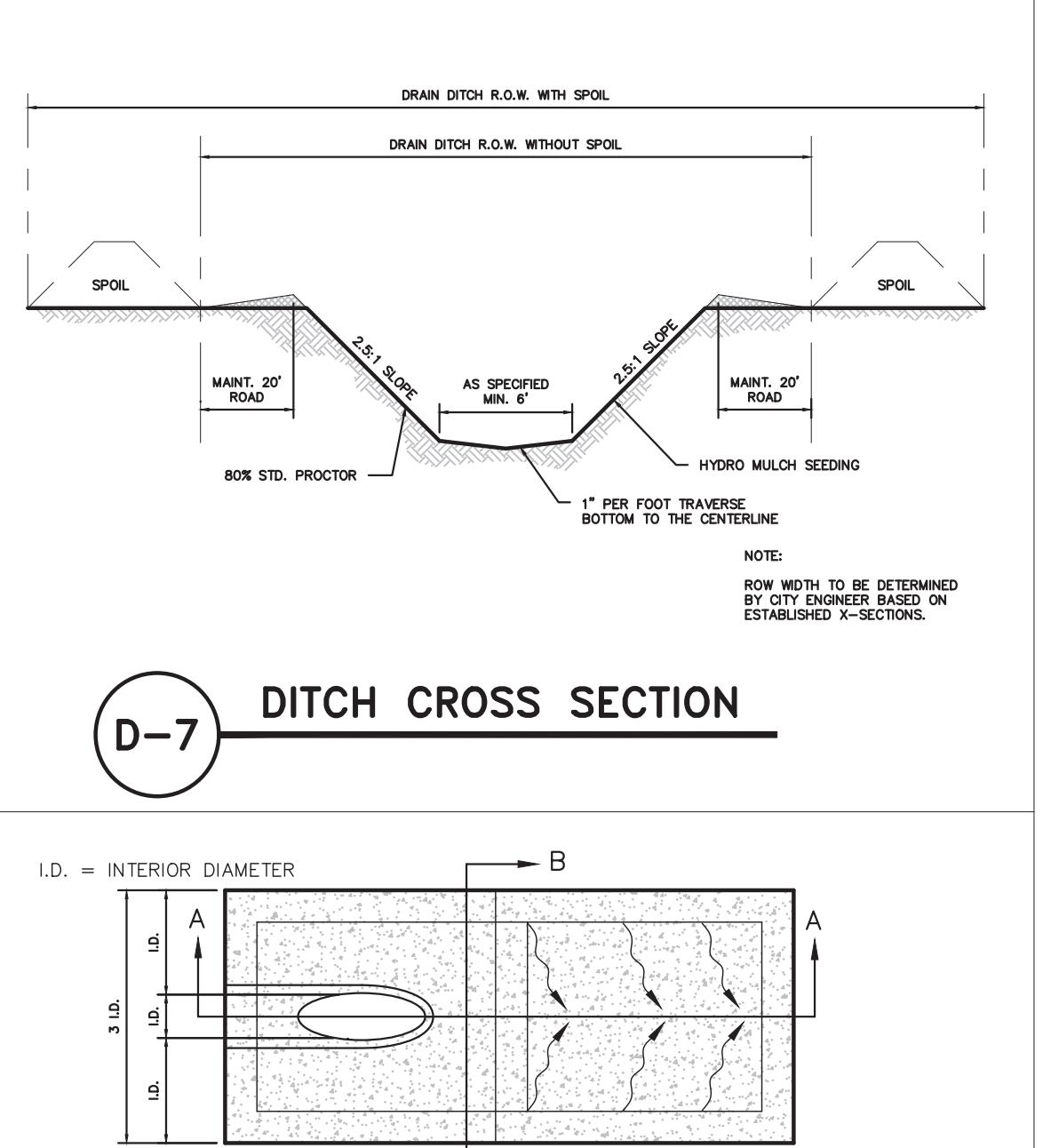
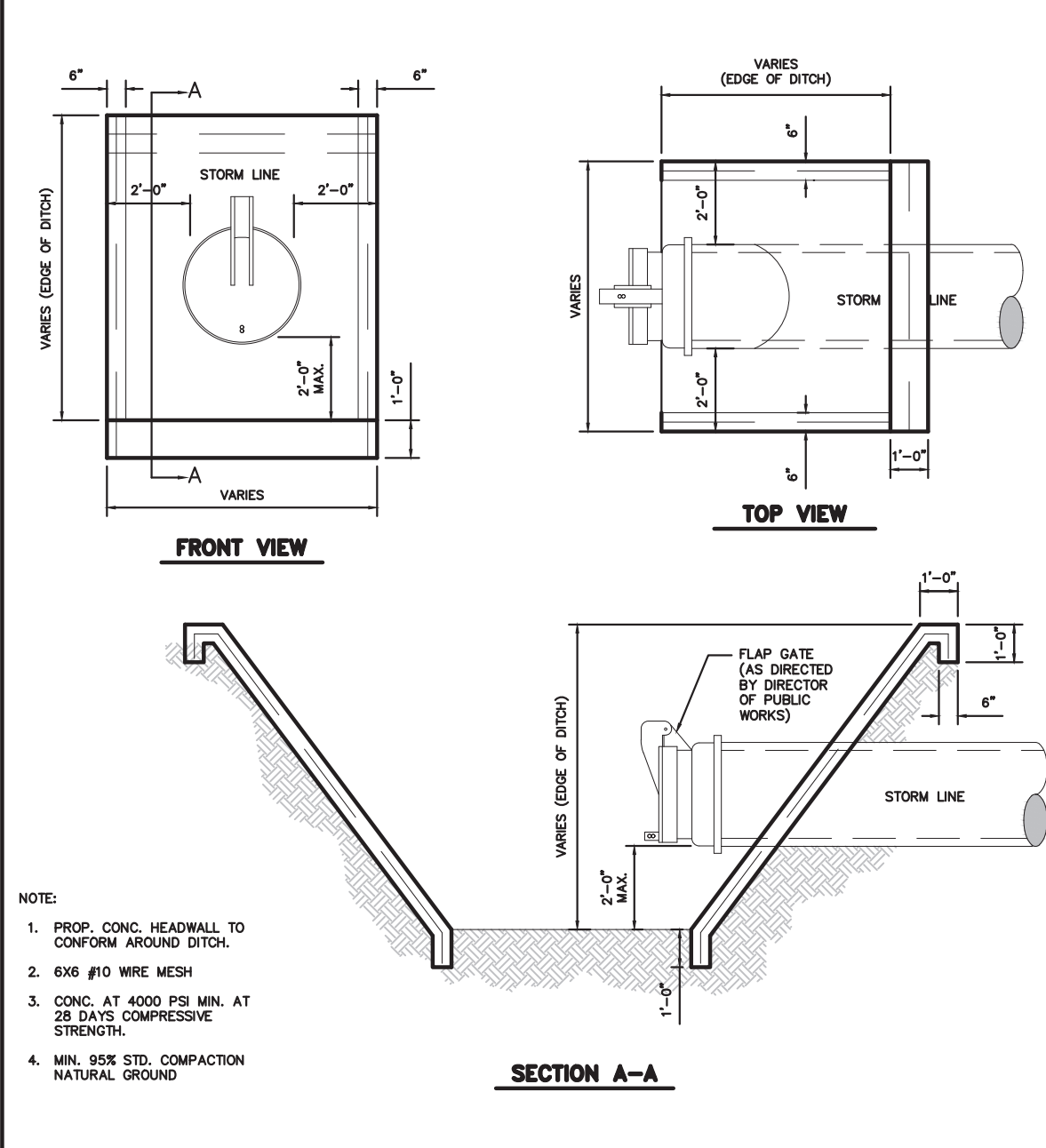
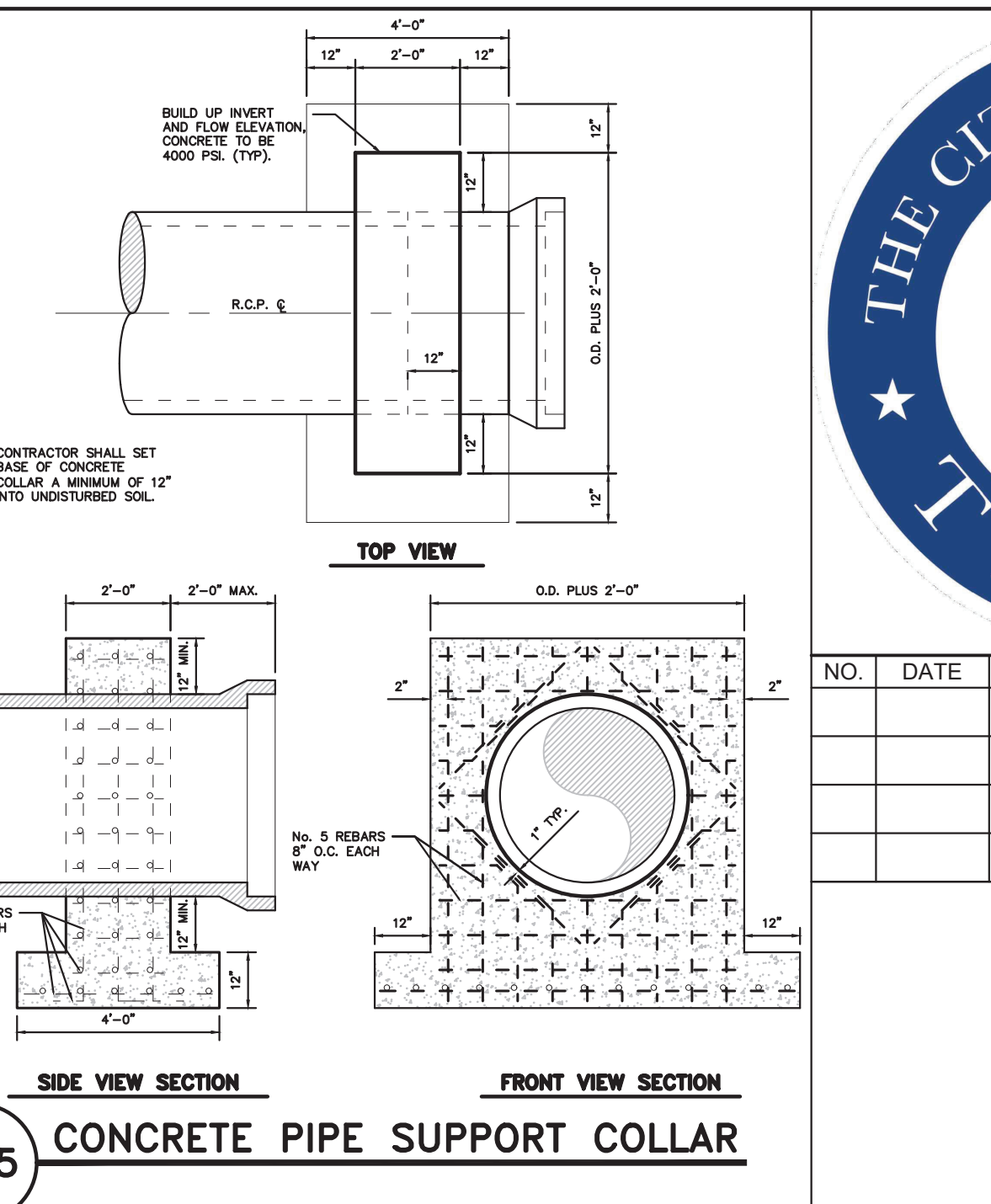
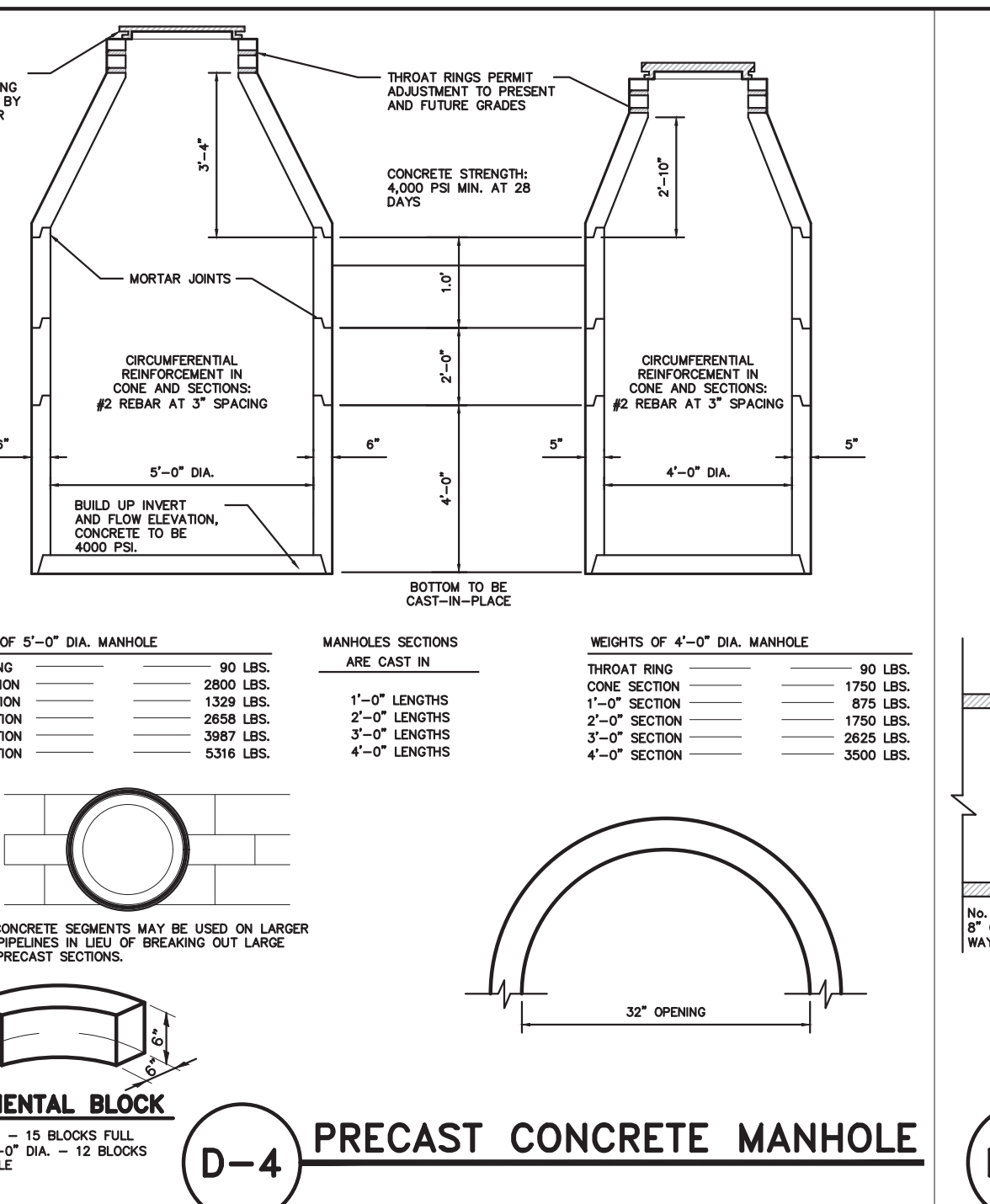
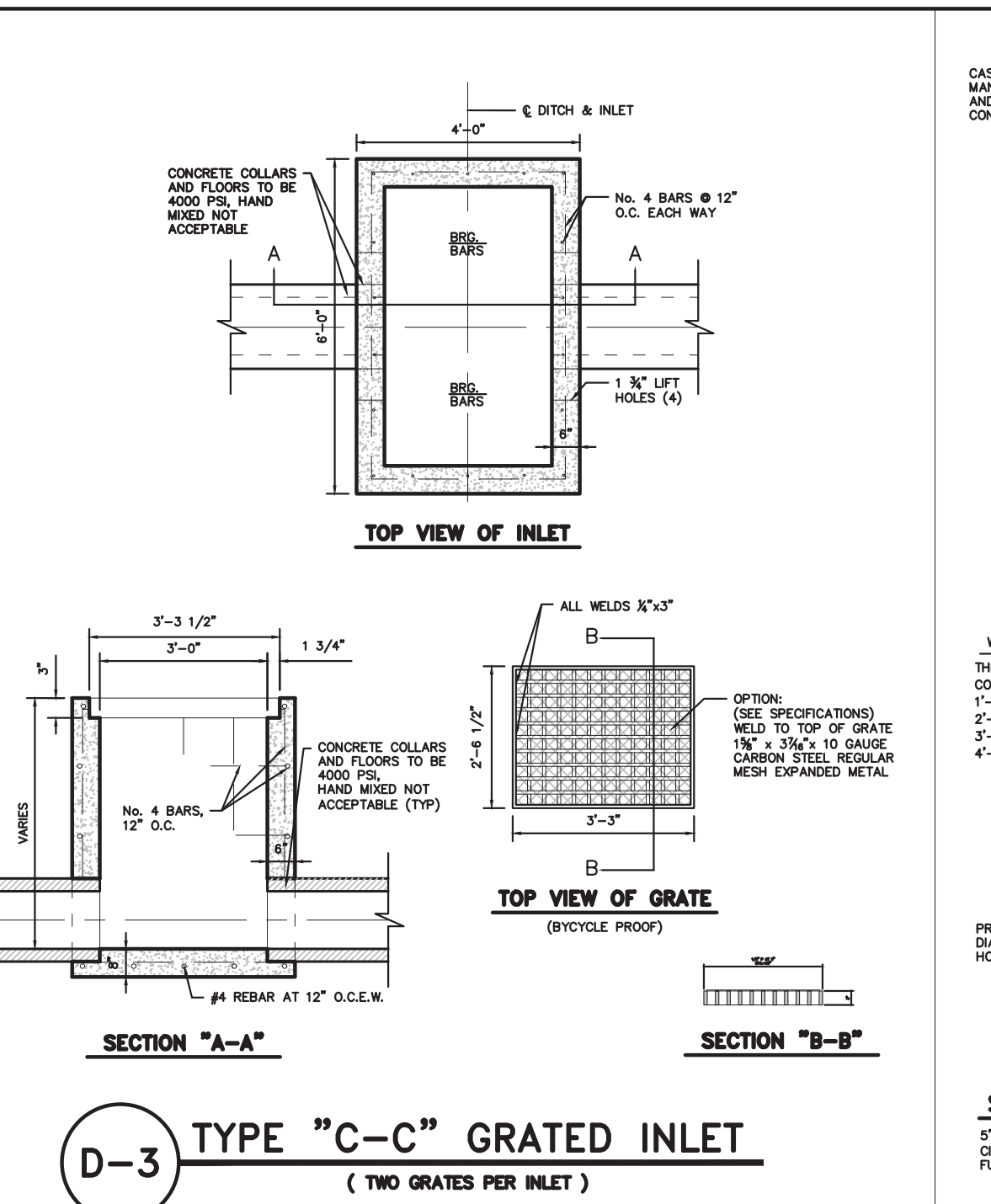
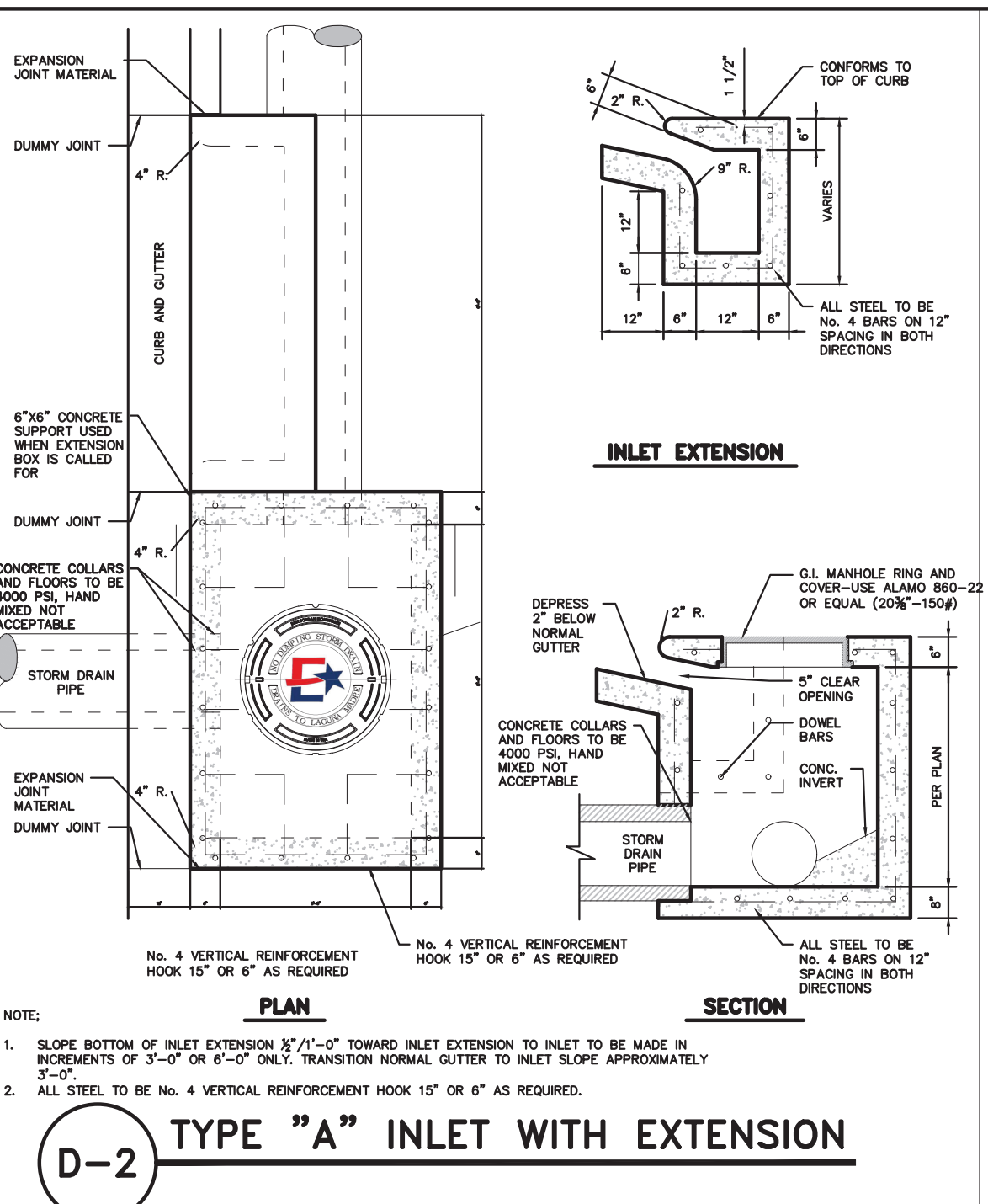
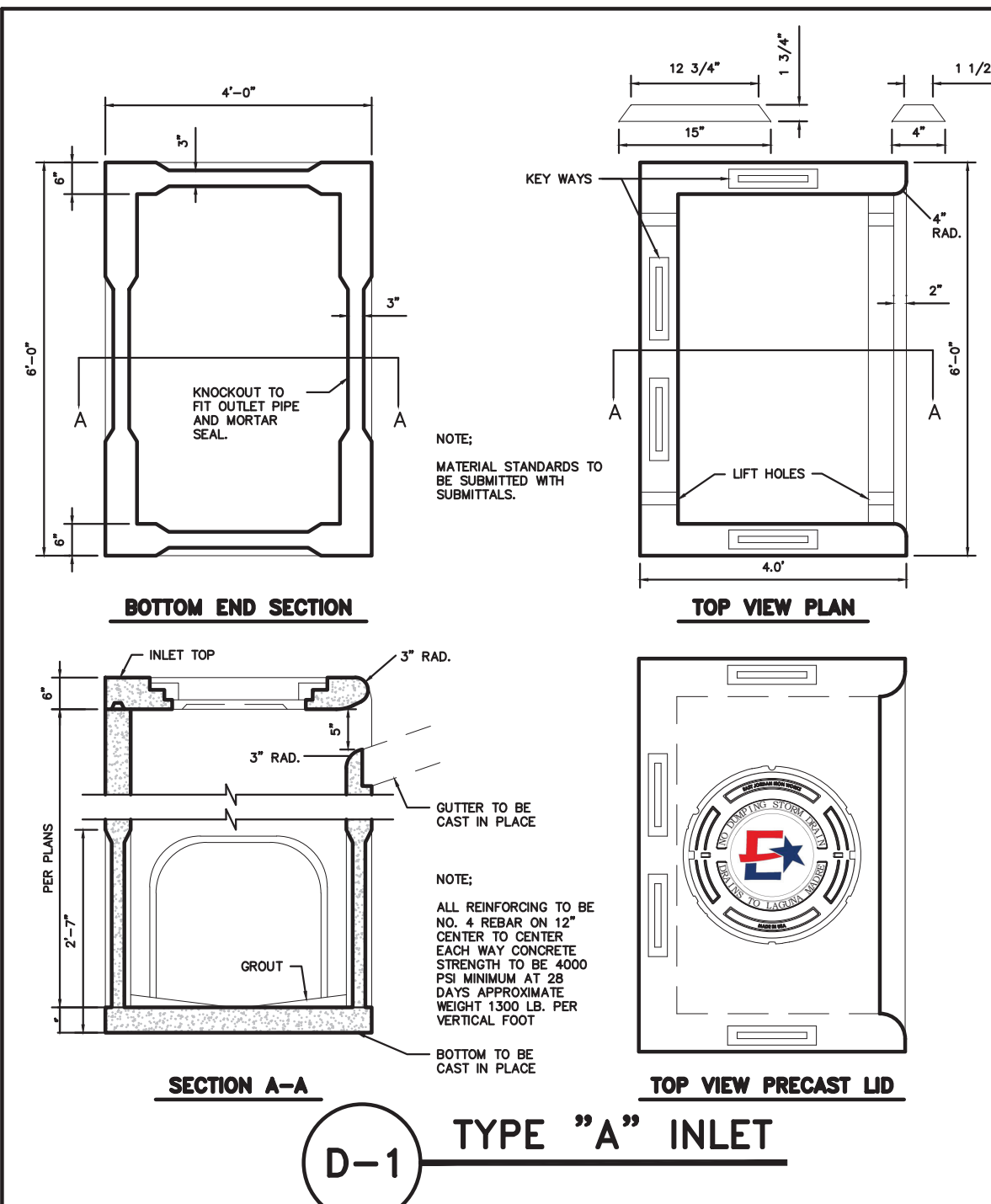
SHEET

OF









THE CITY OF EDINBURG  
TEXAS

NO.	DATE	ISSUE/REVISION	APP.

**PROJECT NAME:**

**SHEET NAME:** DRAINAGE STANDARD DETAILS

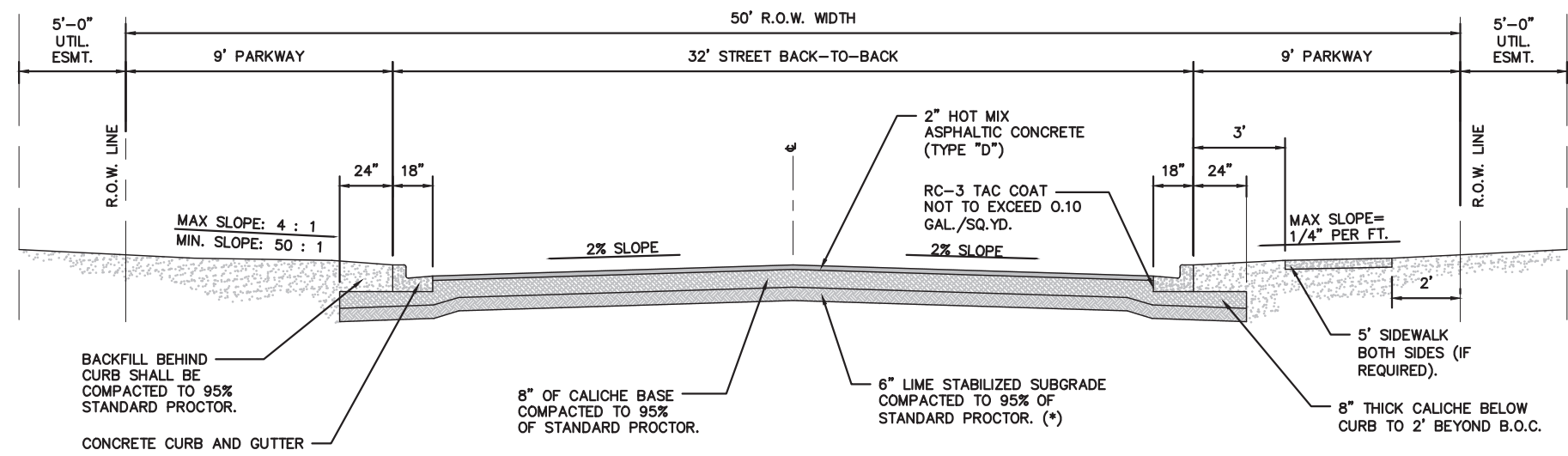
**DATE:** SEPTEMBER 2022

**CREATED BY:** CITY OF EDINBURG ENGINEERING DEPARTMENT

**DRAWING SCALE:** N.T.S.

**SHEET OF**





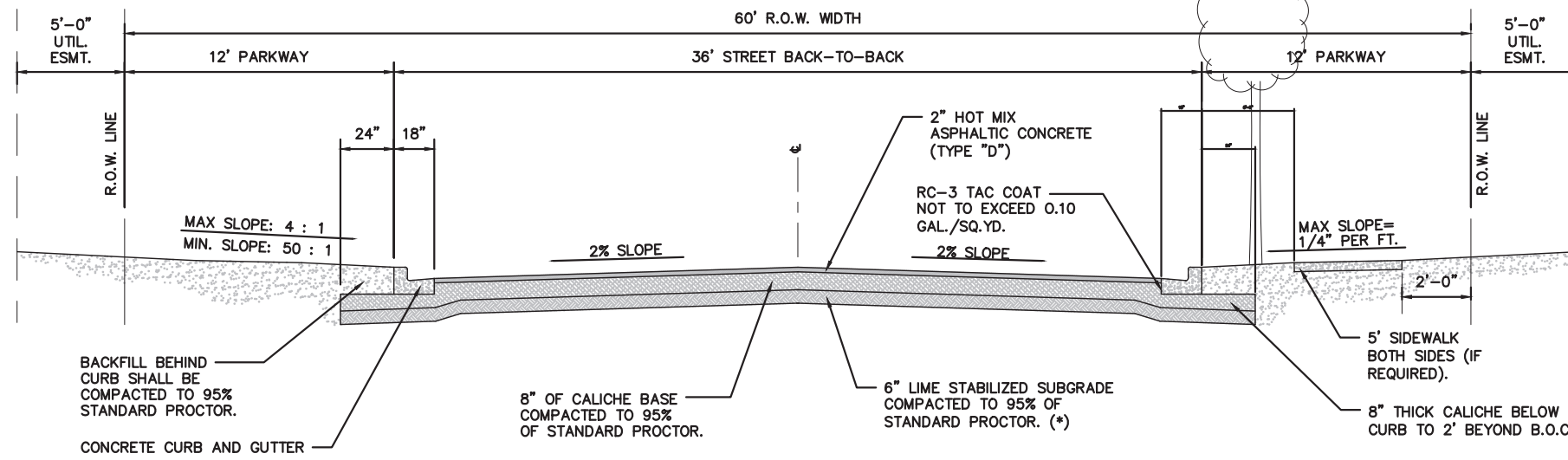
(\*) 2% LIME TREATMENT WILL BE REQUIRED UNLESS DETERMINED BY GEOTECHNICAL REPORT AT PROJECT DEVELOPMENT STAGE.

- NOTES:
1. IF AN ALTERNATIVE PAVEMENT SECTION IS REQUESTED, A PAVEMENT DESIGN ANALYSIS WILL BE REQUIRED FOR APPROVAL BY THE CITY ENGINEER
  2. FOR STREETS SERVING A SUBDIVISION WITH NO STREET TREES (LESS THAN 16 LOTS).

Retained on $\frac{3}{4}$ " Sieve	Percent Required
No. 2	0
No. 4	20 - 60
No. 10	40 - 75
No. 40	70 - 90
Max. P.C.	15
Max. Wet Bulb P.C.	15
Wet Bulb Mill Max Amount	50

### MINOR RESIDENTIAL STREET SECTION ( 32' BB - 50' R.O.W. ) - DETAIL

P-1



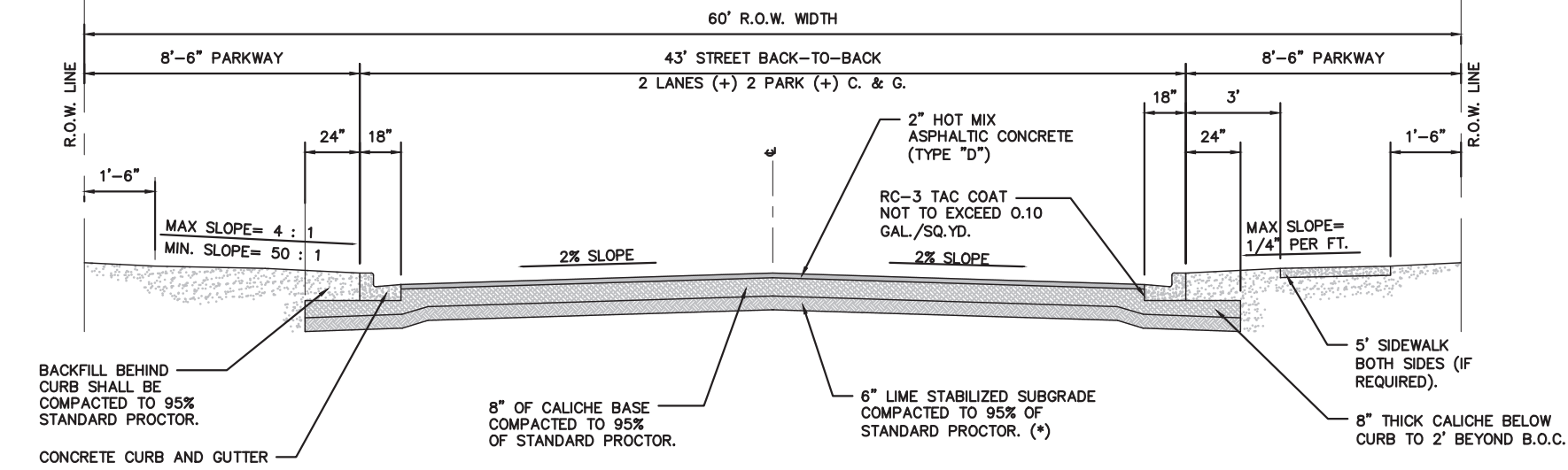
(\*) 2% LIME TREATMENT WILL BE REQUIRED UNLESS DETERMINED BY GEOTECHNICAL REPORT AT PROJECT DEVELOPMENT STAGE.

- NOTES:
1. IF AN ALTERNATIVE PAVEMENT SECTION IS REQUESTED, A PAVEMENT DESIGN ANALYSIS WILL BE REQUIRED FOR APPROVAL BY THE CITY ENGINEER
  2. FOR STREETS SERVING A SUBDIVISION WITH NO STREET TREES (LESS THAN 16 LOTS).

Retained on $\frac{3}{4}$ " Sieve	Percent Required
No. 2	0
No. 4	20 - 60
No. 10	40 - 75
No. 40	70 - 90
Max. P.C.	15
Max. Wet Bulb P.C.	15
Wet Bulb Mill Max Amount	50

### MINOR RESIDENTIAL STREET SECTION W/ STREET ( 36' BB - 60' R.O.W. ) - DETAIL

P-2



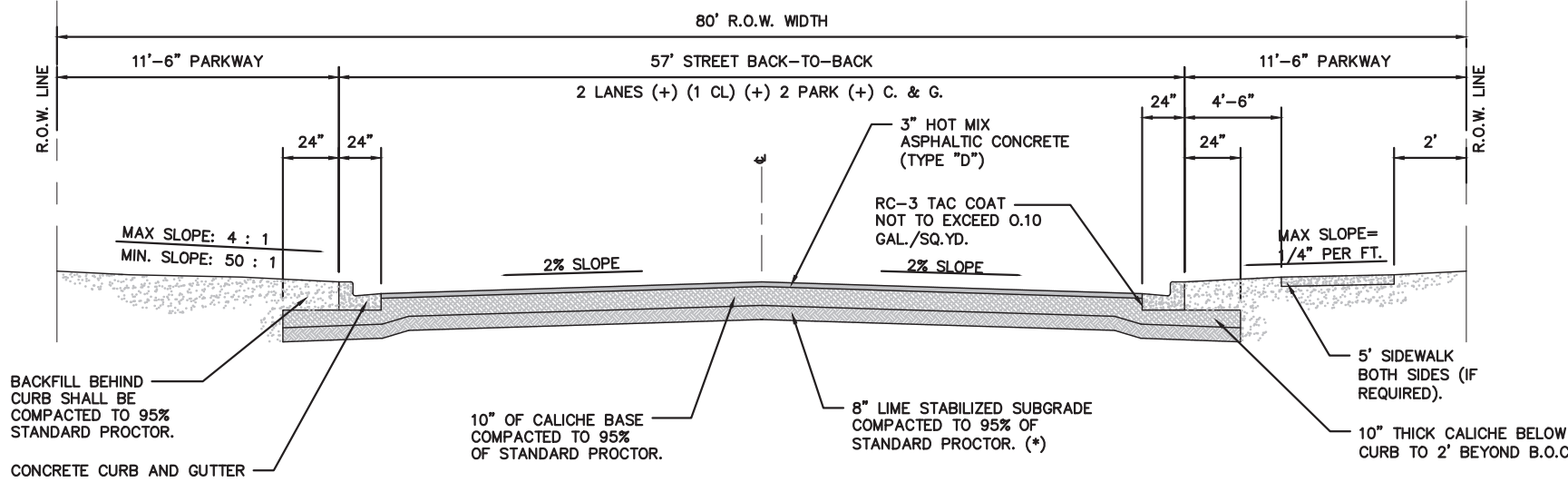
(\*) 2% LIME TREATMENT WILL BE REQUIRED UNLESS DETERMINED BY GEOTECHNICAL REPORT AT PROJECT DEVELOPMENT STAGE.

- NOTES:
1. IF AN ALTERNATIVE PAVEMENT SECTION IS REQUESTED, A PAVEMENT DESIGN ANALYSIS WILL BE REQUIRED FOR APPROVAL BY THE CITY ENGINEER
  2. FOR STREETS SERVING A SUBDIVISION WITH NO STREET TREES (LESS THAN 16 LOTS).

Retained on $\frac{3}{4}$ " Sieve	Percent Required
No. 2	0
No. 4	20 - 60
No. 10	40 - 75
No. 40	70 - 90
Max. P.C.	15
Max. Wet Bulb P.C.	15
Wet Bulb Mill Max Amount	50

### RESIDENTIAL COLLECTOR AND MULTI-FAMILY STREET SECTION DETAIL

P-3



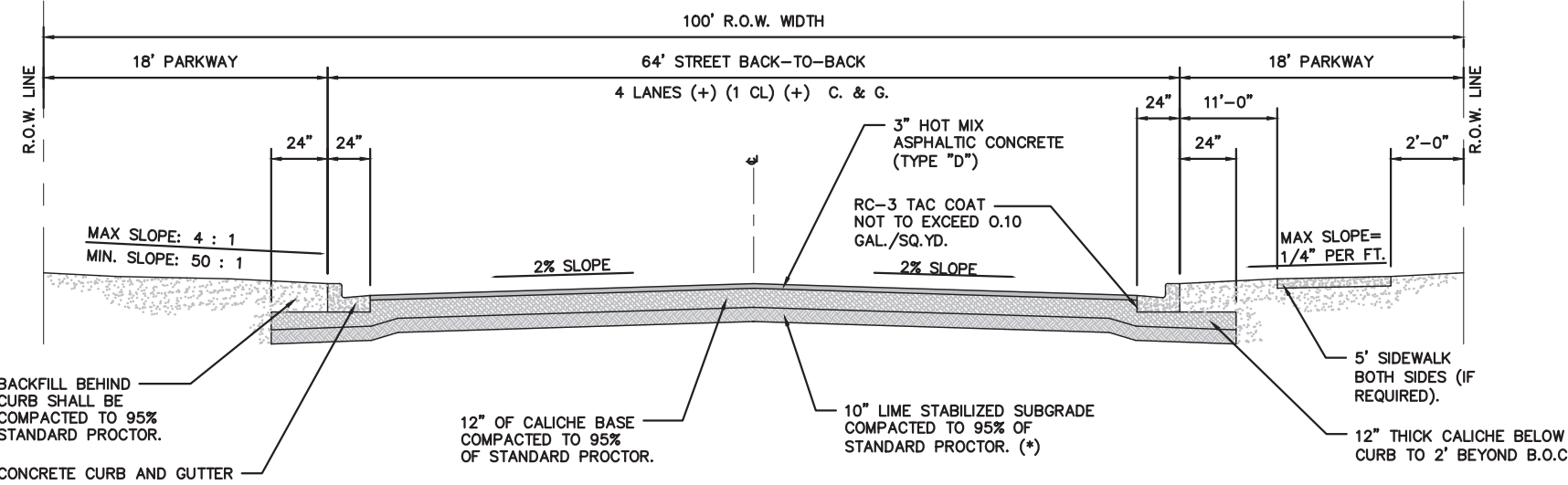
(\*) 2% LIME TREATMENT WILL BE REQUIRED UNLESS DETERMINED BY GEOTECHNICAL REPORT AT PROJECT DEVELOPMENT STAGE.

- NOTE:
1. IF AN ALTERNATIVE PAVEMENT SECTION IS REQUESTED, A PAVEMENT DESIGN ANALYSIS WILL BE REQUIRED FOR APPROVAL BY THE CITY ENGINEER

Retained on $\frac{3}{4}$ " Sieve	Percent Required
No. 2	0
No. 4	20 - 60
No. 10	40 - 75
No. 40	70 - 90
Max. P.C.	15
Max. Wet Bulb P.C.	15
Wet Bulb Mill Max Amount	50

### COLLECTOR STEET SECTION DETAIL

P-4



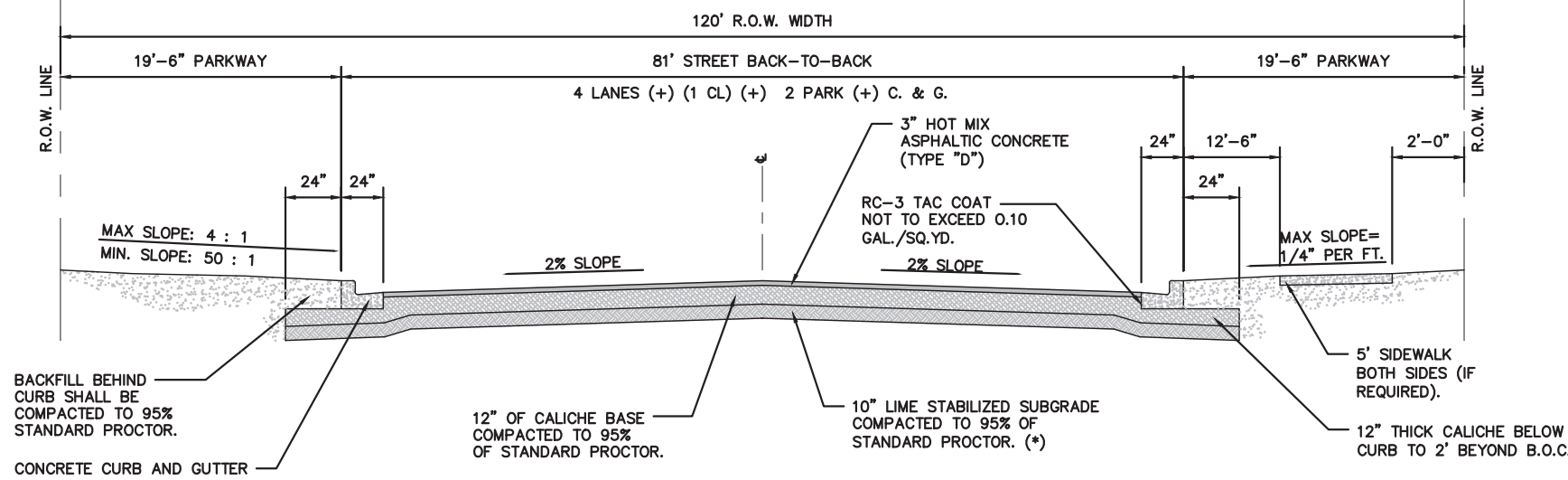
(\*) 2% LIME TREATMENT WILL BE REQUIRED UNLESS DETERMINED BY GEOTECHNICAL REPORT AT PROJECT DEVELOPMENT STAGE.

- NOTE:
1. IF AN ALTERNATIVE PAVEMENT SECTION IS REQUESTED, A PAVEMENT DESIGN ANALYSIS WILL BE REQUIRED FOR APPROVAL BY THE CITY ENGINEER

Retained on $\frac{3}{4}$ " Sieve	Percent Required
No. 2	0
No. 4	20 - 60
No. 10	40 - 75
No. 40	70 - 90
Max. P.C.	15
Max. Wet Bulb P.C.	15
Wet Bulb Mill Max Amount	50

### MINOR ARTERIAL STREET SECTION DETAIL

P-5



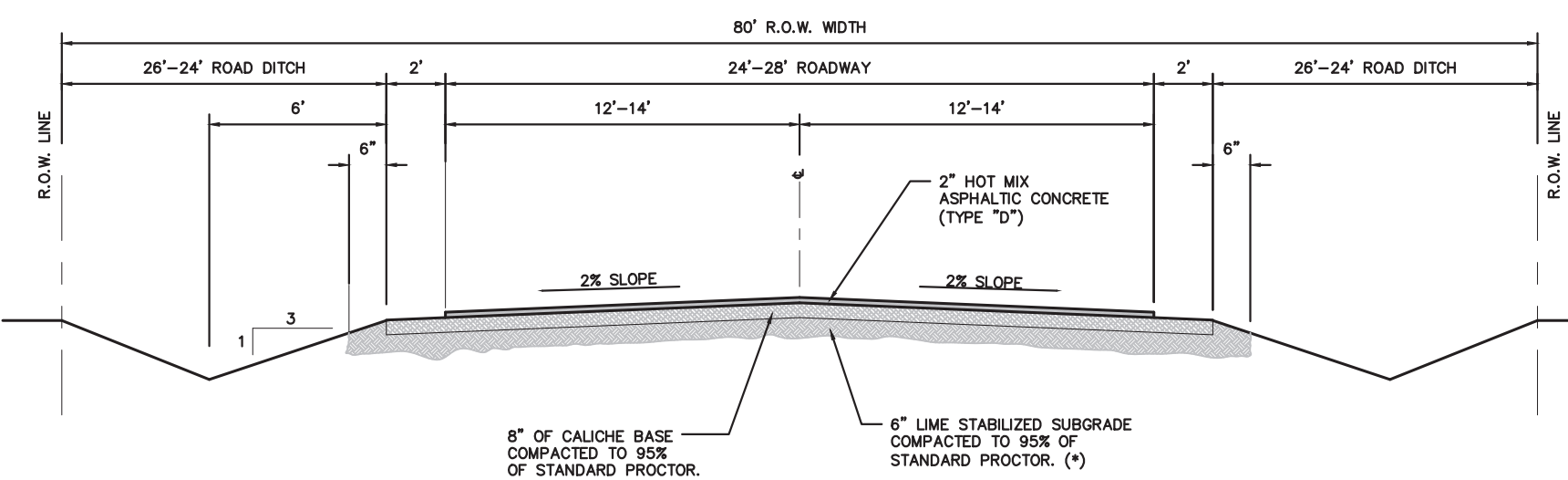
(\*) 2% LIME TREATMENT WILL BE REQUIRED UNLESS DETERMINED BY GEOTECHNICAL REPORT AT PROJECT DEVELOPMENT STAGE.

- NOTE:
1. IF AN ALTERNATIVE PAVEMENT SECTION IS REQUESTED, A PAVEMENT DESIGN ANALYSIS WILL BE REQUIRED FOR APPROVAL BY THE CITY ENGINEER

Retained on $\frac{3}{4}$ " Sieve	Percent Required
No. 2	0
No. 4	20 - 60
No. 10	40 - 75
No. 40	70 - 90
Max. P.C.	15
Max. Wet Bulb P.C.	15
Wet Bulb Mill Max Amount	50

### PRINCIPAL ARTERIAL STREET SECTION DETAIL

P-6

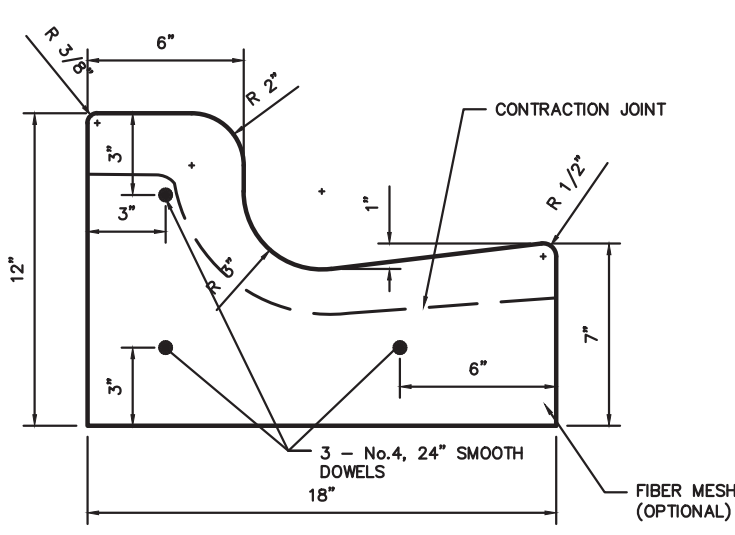


(\*) 2% LIME TREATMENT WILL BE REQUIRED UNLESS DETERMINED BY GEOTECHNICAL REPORT AT PROJECT DEVELOPMENT STAGE.

- NOTE:
1. IF AN ALTERNATIVE PAVEMENT SECTION IS REQUESTED, A PAVEMENT DESIGN ANALYSIS WILL BE REQUIRED FOR APPROVAL BY THE CITY ENGINEER

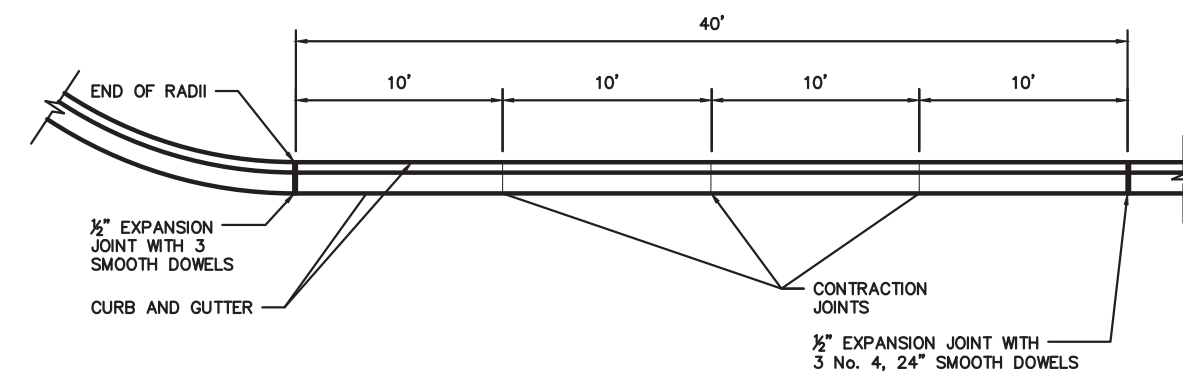
### RURAL ARTERIAL STREET SECTION DETAIL

P-7



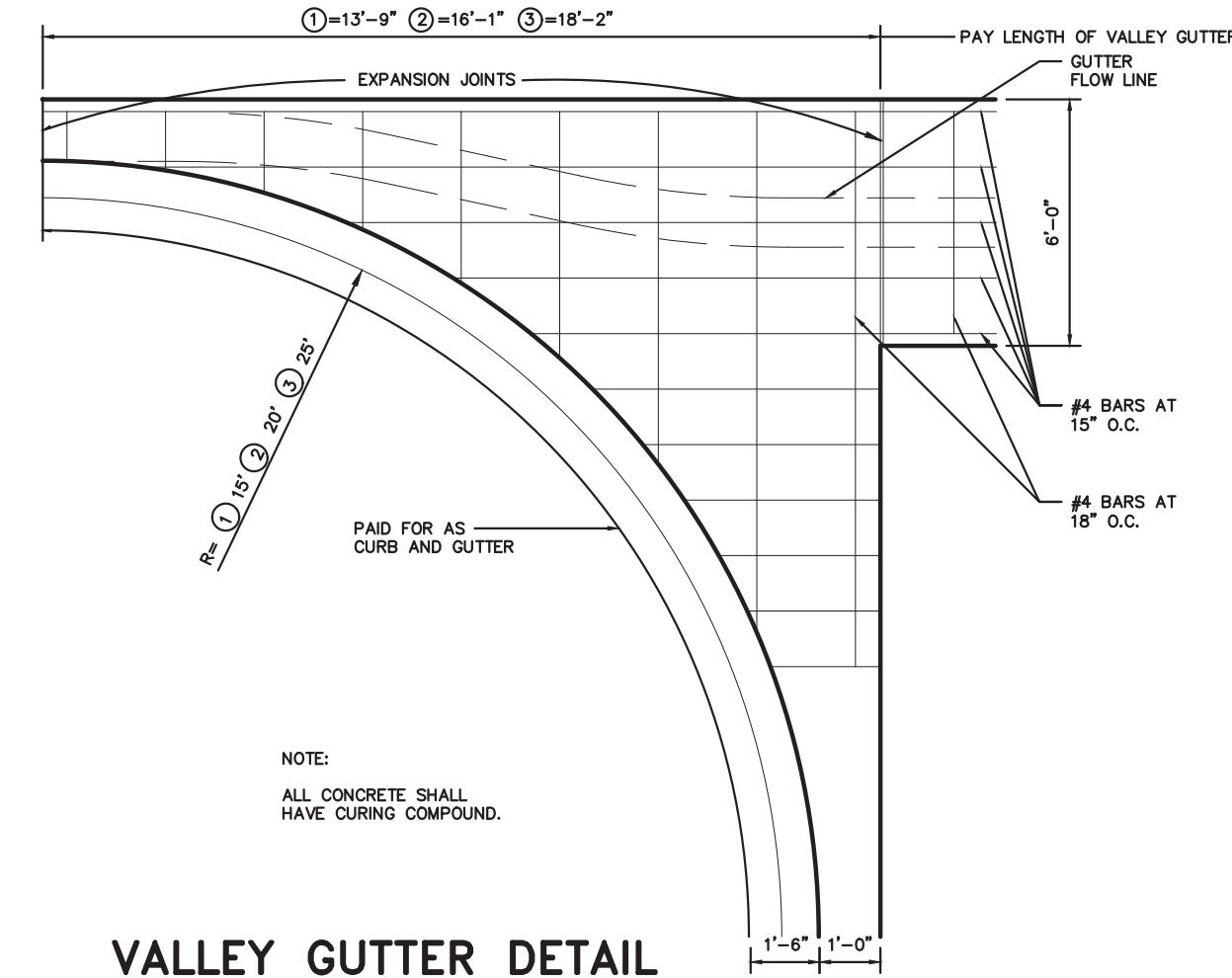
### CURB AND GUTTER DETAIL

NOT TO SCALE



### TYPICAL JOINTS

P-8



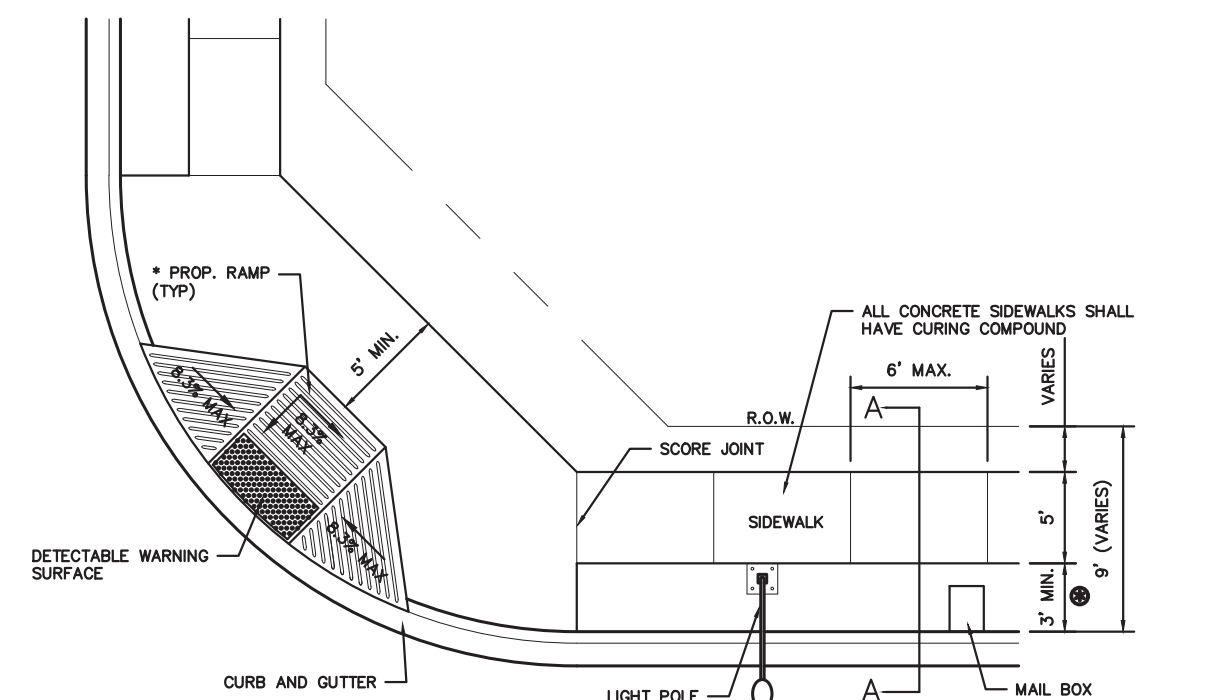
### VALLEY GUTTER DETAIL

NOTE:

- ALL CONCRETE SHALL HAVE CURING COMPOUND.

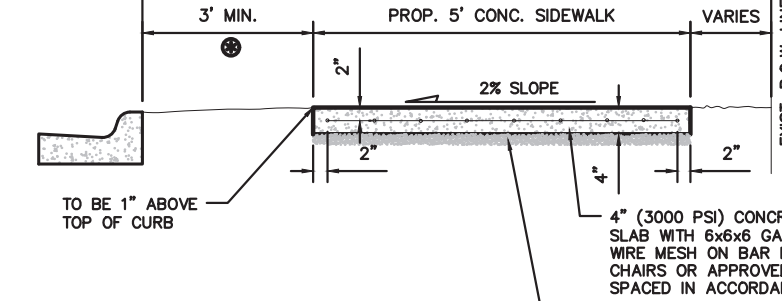
### TYPICAL VALLEY GUTTER SECTION

P-9



### PLAN VIEW

- NOTES:
1. SCORE JOINTS 1/4" THICKNESS OF SIDEWALK
  2. EXPANSION JOINT EVERY 30'
  3. JOINT IN CENTER OF SIDEWALK IF OVER 15' WIDE
  4. ANY OTHER DEVIATION SHOULD BE APPROVED BY CITY ENGINEER



### SECTION A-A

### TYPICAL CONCRETE SIDEWALK DETAIL

P-10



NO.	DATE	ISSUE/REVISION	APP.

PROJECT NAME:

SHEET NAME:  
PAVING  
STANDARD DETAILS  
(1 OF 2)

DATE:  
SEPTEMBER 2022

CREATED BY:  
CITY OF EDINBURG ENGINEERING DEPARTMENT

DRAWING SCALE: N.T.S.

SHEET OF



**P-11** **HANDICAP RAMP**

**P-12** **PAVING DRIVEPAD**

PEDESTRIAN FACILITIES  
RAMPS TYPES

**PEDESTRIAN FACILITIES**  
**SIDEWALK AT DRIVEWAY**

NO.	DATE	ISSUE/REVISION	APP

[illegible][illegible]

Diagram illustrating the specifications for a 'NO PARKING' sign:

- LOADING AND UNLOADING ACCESS:** ACCESSIBLE SIDE WALKWAY PAINTED BLUE.
- STRIPES:** STRIPES AT 30" MAXIMUM ON CENTER PAINTED A COLOR CONTRASTING WITH THE PARKING SURFACE, PREFERENTLY BLUE OR WHITE.
- TYPICAL PAVEMENT SYMBOL:** PER SECTION 1108.4.
- DIMENSION TO CENTERLINE OF STRIP:** Indicated by a vertical dimension line on the left.
- 6'-0" MINIMUM:** Indicated by a horizontal dimension line at the bottom.
- 12'-0" MINIMUM:** Indicated by a vertical dimension line on the right.
- WITHIN THE LOADING & UNLOADING ACCESS:** ACCESSIBLE SIDE WALKWAY PAINTED BLUE.
- 6'-0" MINIMUM AT VAN ACCESSIBLE PARKING STALL:** Indicated by a horizontal dimension line at the bottom.

**P-18** **GATE ENTRANCE**

**FIRE HYDRANT LOCATION - PLAN**

**SIDEWALK DEVIATION AT FIRE HYDRANT**

Diagram illustrating the required clearance for a fire hydrant location relative to a sidewalk and curb and gutter.

- The fire hydrant is located within a 1'-0" MIN. clearance from the curb and gutter.
- The sidewalk is shown with a 2'-0" clearance from the fire hydrant.
- The curb and gutter is shown with a 3'-0" clearance from the fire hydrant.
- The diagram also shows a 1'-0" clearance from the fire hydrant to the sidewalk.

P-21 ADA SIDEWALK AT MAILBOX

(P-22) DRIVEWAYS W/OUT C&G

**(P-23) TYPICAL BANNER**

**P-24 DOWEL TYPE EXPANSION JOINT**