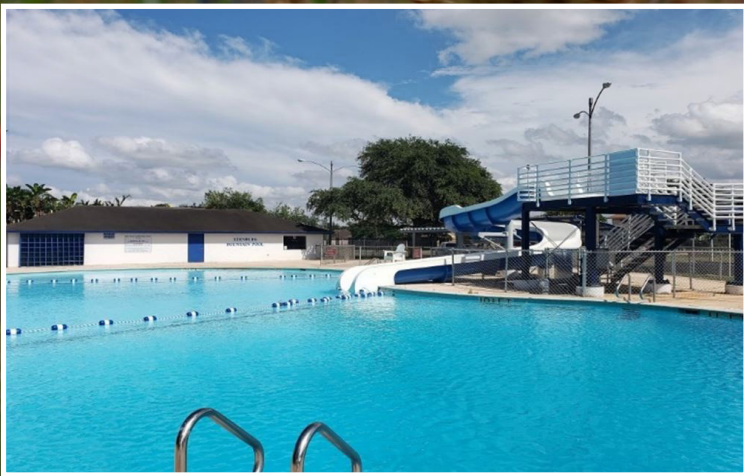


# CITY OF EDINBURG, TEXAS

## PARKS AND RECREATION

### *MASTER PLAN 2019*



July, 2019

**CITY OF EDINBURG, TEXAS**  
**PARKS AND RECREATION**  
***MASTER PLAN 2019***

**July, 2019**

## Acknowledgements

Chapter 1 – Introduction .....	1.1
Chapter 2 – Plan Development Process.....	2.1
Chapter 3 – Goals and Actions.....	3.1
Chapter 4 – Inventory of Parks and Recreation Programs.....	4.1
Chapter 5 – Facilities Concepts and Standards .....	5.1
Chapter 6 – Needs Assessment and Identification .....	6.1
Chapter 7 – Plan Implementation and Prioritization of Needs.....	7.1
Chapter 8 – Operations and Maintenance .....	8.1
Appendices .....	9.1

This plan is intended to guide decisions and development of the City of Edinburg's parks and recreation system. The following individuals make this possible

## **MAYOR AND CITY COUNCIL**

Richard Molina, Mayor

David Torres, Mayor Pro-Tem, Councilmember-Place 4

Jorge Salinas, Councilmember-Place 1

Gilbert Enriquez, Councilmember Place 2

Homer Jasso, Jr., Councilmember Place 3

## **ADMINISTRATION**

Juan G. Guerra, City Manager

Carla M. Rodriguez, Assistant City Manager

Tom Reyna, Assistant City Manager

Parks and Recreation Advisory Board

Veronica Saenz, Board President

Joe Ramirez, Board Vice President

Javier Salazar, Board Member

Jorge Salinas, Board Member

Joseph Calvillo, Board Member

Gabriel Hernandez, Board Member

Jorge Rios, Board Member

Michael Tamez, Board Member

John Oliva, Board Member

## **PARKS AND RECREATION DEPARTMENT**

Javier Garza, Director

Eric Molina, Assistant Director

Ronnie Rodriguez, Recreation Manager/Sports

Martin Martinez, Recreation Supervisor/Family Leisure

Luis Rodriguez, Parks Operations Manager

Nicholus Villarreal, Aquatics Supervisor

Marisa Oliva, World Birding Center Manager

Lee Tamez, Administrative Specialist/Rentals

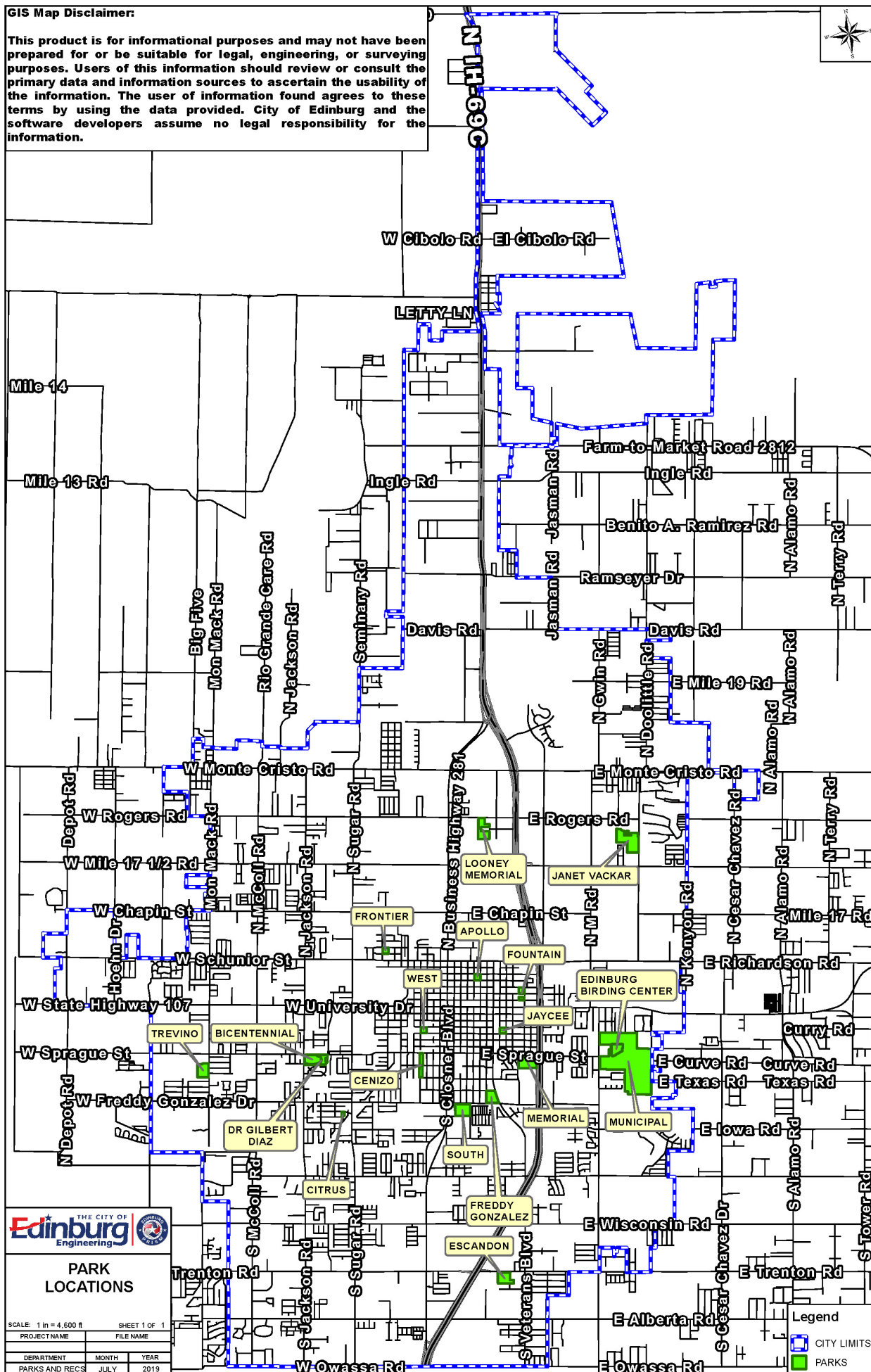
## **DEPARTMENT OF ENGINEERING FOR THE MAPS**

Sergio Castro, Engineering Graphics Tech 1

## **PLANNING CONSULTANT**

Ann Cooke Bagley, FAICP, Bagley Associates LLC

**This product is for informational purposes and may not have been prepared for or be suitable for legal, engineering, or surveying purposes. Users of this information should review or consult the primary data and information sources to ascertain the usability of the information. The user of information found agrees to these terms by using the data provided. City of Edinburg and the software developers assume no legal responsibility for the information.**



**POINT OF CONTACT FOR THE CITY OF EDINBURG, TEXAS**

Javier Garza  
Director of Parks and Recreation  
315 E. Palm Drive  
Edinburg, Texas  
956.381-5631  
javgarza@cityofedinburg.com

**PLAN PREPARER**

Ann Cooke Bagley, FAICP, Bagley Associates  
Principal  
8139 Barbaree Blvd, Dallas, Texas 75228  
214.766.8720  
ann@bagleyworks.com

The development of a new Parks and Recreation Master Plan requires an overview of past, current and future to better understand the needs and desires of the City of Edinburg, Texas. The City, the county seat of Hidalgo County, is located in the central part of the Lower Rio Grande Valley. It is bordered by the cities of Pharr, San Juan, and McAllen.

Edinburg has a total area of 37.7 square miles, U.S. Route 281 (Interstate 69C) runs through the east side of Edinburg. US 281 leads north 103 miles to Alice and 229 miles to San Antonio. With a mild humid subtropical climate, summer high temperatures are in the upper 90s with January lows in the upper 40s. Average rainfall is 22 inches. The elevation above sea level is 95 feet.

The City of Edinburg is chartered as a Home Rule city with a Council/Manager form of government. The governing body is the City Council comprised of an elected Mayor and four City Council Members. The City Council appoints the City Manager to serve as the chief administrative officer managing the day-to-day operations of the City.

**ROLE OF THE CITY IN PROVIDING PARKS AND RECREATION**

In Texas, the role of cities in the provision of parks and recreational facilities varies. Edinburg's citywide Parks and Recreation Department has been successful in creating a useful, well-maintained system of parks and numerous recreation programs. The Department operates and maintains 18 parks and recreation facilities. The Parks and Recreation Advisory Board, the liaison between the citizens and the City Council, provides oversight, recommendations, and support for parks and recreation issues.

This Plan works in concert with the *2017 Bicycle and Pedestrian Plan*, *Downtown Master Plan*, and the forthcoming *Comprehensive Plan* to provide a cohesive approach to continue moving the City forward.

**HISTORY**

In 1908, in an area that was largely ranches, four prominent residents, John Closner, William Briggs, Argyle McAllen, Plutarco de la Viña and Dennis B. Chapin developed a new community located at the current crossroads of U.S. Highway 281 and State Highway 107. The town was officially named Edinburg in 1911 and incorporated in 1919. The Southern Pacific Railroad arrived in 1927 and many streets are named after the early railroad executives. The next year, 1928, Edinburg experienced a building boom that continues even to present day. Edinburg has been recognized numerous times as a great place to live, work and play.



## POPULATION

To help understand the future needs of the city, it is helpful to look at the population over time. The following sections include tables that look at past, present, and projected (estimated) populations.

**Table 2.1-Historic Population** illustrates 100 years of documented population growth.

<b>TABLE 2.1 - HISTORIC POPULATION</b>								
<b>1920</b>	<b>1940</b>	<b>1960</b>	<b>1970</b>	<b>1980</b>	<b>1990</b>	<b>2000</b>	<b>2010</b>	<b>2019</b>
1,406	6,718	18,706	17,163	24,075	34,593	52,038	77,100	86,123

Source: United States Census Bureau, 1960, 1970, 1980, 1990, 2000 Decennial Census, 2016 American Community Survey 5-Year Estimates, 2016, 2017

## CURRENT POPULATION

The 2017 United States Census estimates the population to be 86,123, up significantly from 77,100 in 2010. **Table 2.2 Population Distribution by Age and Sex** uses the Census' American Community Survey 2012-2017 that is the most recent detailed data. The distributions are interesting in that the population is divided almost evenly with 47.6 percent Male and 52.4 percent Female. It is also important to note that approximately 26.8 percent are 14 years and younger with all those under 20 years old are 36.60 percent. The next two largest ages are 25-34 and 45-54, most likely the parents of the children and teenagers. This indicates a young and family-oriented population.

<b>TABLE 2.2 - POPULATION DISTRIBUTION BY AGE AND SEX</b>		
	<b>Total</b>	
	<b>Number</b>	<b>% of Total</b>
<b>Total Population</b>	86,123	100
<b>Sex</b>		
Male	40,961	47.6
Female	45,162	52.4
<b>Age</b>		
Under 5 years	8,441	9.8
5 to 9 years	7,223	8.4
10 to 14 years	7,442	8.6
15 to 19 years	8,429	9.8
20 to 24 years	8,195	9.5
25 to 34 years	12,073	14.0
35 to 44 years	12,086	7.5
45 to 54 years	9,151	10.6
55 to 59 years	3,751	4.4
60 to 64 years	3,199	3.7
65 to 74 years	3,318	3.9
75 to 84 years	1,966	2.3
85 years and over	849	1.0

Source: Source: United States Census Bureau, Selected Characteristics of the Native and Foreign- Born Population 2012-2017 American Community Survey

## RACE AND ETHNICITY

Included in demographic/population information is self-identified race and ethnicity. It is important to note that Hispanic heritage is considered ethnicity rather than race. As expected and shown in the two tables below, Edinburg residents mainly identify as Hispanic. **Table 2.3 - Race and Ethnicity 2017** and **Table 2.4 - Hispanic Demographics** show the data.

TABLE 2.3 - RACE AND ETHNICITY 2010		
Race	Edinburg	Texas
White	87.9%	70.4%
Black or African American	1.3%	11.9%
Asian	2.3%	3.8%
Native American	0.4%	0.8%
Hawaiian/Pacific Islander	0.2%	0.1%
Some Other Race	9.9%	10.4%
Two or More Races	12%	2.2%

Source: United States Census Bureau, Selected Characteristics of the Native and Foreign- Born Population 2012-2017 American Community Survey

TABLE 2.4 - HISPANIC DEMOGRAPHICS		
Hispanic/Not Hispanic	Edinburg	Texas
Hispanic	89.1%	37.6%
Non Hispanic	10.9%	62.4%

Source: United States Census Bureau, Quick Facts July 2017

## POPULATION PROJECTIONS

Looking at what is possible in the future is important to planning for the City of Edinburg. The Texas Water Development Board projections in **Table 2.5 - Population Projections** were developed to anticipate water demand.

TABLE 2.5 - POPULATION PROJECTIONS						
Year	2020	2030	2040	2050	2060	2070
Estimate	97,711	121,329	145,041	168,800	192,560	215,659

Source: Texas Water Development Board. January 2015/2016 Regional Water Plan - Population Projections 2020-2070

## HOUSING

**Table 2.7 - Housing Structures/Number of Units/Occupancy** shows that most of homes (81.9 percent) in Edinburg are single-family, one unit detached structures. The next largest group is mobile homes with 9.9 percent. Duplexes, townhomes, and patio homes are 4.1 percent while apartments are 3.1 percent. Most of homes are owner occupied. **Table 2.6 - Housing Structures/Number Of Units/Occupancy** shows the details of the housing characteristics.



<b>TABLE 2.6 - HOUSING STRUCTURES/NUMBER OF UNITS/OCCUPANCY</b>	
Total housing units	28,047
Occupied housing units	25,649
Vacant housing units	2,398
1-unit detached	16,977
1-unit attached	445
2 units	2,259
3 or 4 units	2,940
5 to 9 units	934
10 to 19 units	1,146
20 or more units	1,065
Mobile home	2268
Boat, RV, van, etc.	13
Owner-occupied	14,205
Renter-occupied	11,444

Source: United States Census Bureau Age and Sex, 2012-2016 American Community Survey 5-Year Estimates 2017

The data for housing is from 2017. Since the City is experiencing rapid growth, there are more houses in 2019, particularly new single family ones. There is still available land that may eventually be developed for housing as the population is expected to increase as people continue to move to Texas.

## EDUCATION

Education in Edinburg is provided primarily by the Edinburg Consolidated Independent School District. A small portion is served by the McAllen Independent School District, including Memorial High School, Cathey Middle School, and Gonzalez Elementary School.

Other education is operated by the South Texas Independent School District with magnet schools that serve Edinburg. South Texas Business Education & Technology Academy (BETA) is in Edinburg. The Catholic Diocese of Brownsville operates St. Joseph Catholic School elementary and middle school.

High education is provided regionally at University of Texas Rio Grande Valley (formerly University of Texas Pan American). This contributes to the higher number of college graduates. In both age groups in the table below.

**Table 2.7 - Educational Attainment Estimates** shows the different levels of educational attainment.

<b>TABLE 2.7 - EDUCATIONAL ATTAINMENT ESTIMATES</b>	
Population 18 to 24 years	11,525
Less than high school graduate	1,571
High school graduate (includes equivalency)	2,642
Some college or Associate degree	6,277
Bachelor's degree or higher	1,035

Population 25 years and over	46,393
Less than 9th grade	6,052
9th to 12th grade, no diploma	4,912
High school graduate (includes equivalency)	9,704
Some college, no degree	9,398
Associate degree	2,694
Bachelor's degree	9,278
Graduate or professional degree	4,355

Source: United States Census Bureau Age and Sex, 2012-2016 American Community Survey 5-Year Estimates 2017

## ECONOMY

Edinburg's economy benefits from being in the Reynosa–McAllen bi-national metropolitan area along the United States/Mexico border as well as on a primary north/south highway. With a population of more than 1.5 million people in the area, the City provides warehousing/shipping/logistics now and in the long range future. Educational institutions as well as healthcare and social assistance form the highest percentage of employees, followed by the service industries and public administration. **Table 2.8 - Employment by Major Industries** in Edinburg is shown below.

<b>TABLE 2.8 – EMPLOYMENT BY MAJOR INDUSTRIES IN EDINBURG</b>		
Civilian employed population 16 years and over		<b>37,802</b>
<b>Name of Industry</b>	<b># of Employees</b>	<b>% of Total</b>
Agriculture, forestry, fishing and hunting, and mining	833	2.2
Construction	2,143	5.7
Manufacturing	1,141	3.0
Wholesale trade	668	1.8
Retail trade	4,782	12.7
Transportation and warehousing, and utilities	1,661	4.4
Information	508	1.3
Finance and insurance, real estate ,and rental and leasing	1,477	3.9
Professional, scientific, and management, and administrative and waste management services	3,593	9.5
Educational services, health care, and social assistance	13,989	37.0
Arts, entertainment, and recreation, and accommodation and food services	2,890	7.6
Other services, except public administration	1,651	4.4
Public administration	2,466	6.5

Source : United States Census Bureau Age and Sex, 2012-2016 American Community Survey 5-Year Estimates 2017:



## INCOME

In general, Edinburg's average household income is slightly lower than the national average income in 2017 of \$61,372. It is generally higher than many other communities in the Rio Grande Valley. The governmental functions and UT RGV contribute to this as well as the educated and technically trained workforce. See **Table 2.9 – Income** below

<b>TABLE 2.9 - INCOME (IN 2017 INFLATION-ADJUSTED DOLLARS)</b>		
<b>Total households</b>	<b>25,649</b>	<b>%</b>
Less than \$10,000	3,159	12.30%
\$10,000 to \$14,999	1,596	6.20%
\$15,000 to \$24,999	2,967	11.60%
\$25,000 to \$34,999	2,587	10.10%
\$35,000 to \$49,999	3,454	13.50%
\$50,000 to \$74,999	4,066	15.90%
\$75,000 to \$99,999	3,028	11.80%
\$100,000 to \$149,999	3,346	13.00%
\$150,000 to \$199,999	958	3.70%
\$200,000 or more	488	1.90%
Median household income (dollars)	\$40,038	
Mean household income (dollars)	\$60,675	

Source United States Census Bureau, Fact Finder, 2018

Edinburg has all the necessary components of a great city, and that is, in part, due to the excellence of its parks and recreation system.

Work on the new Parks and Recreation Plan began with a meeting on February 21, 2019 with all the City staff that would be involved in the planning process. The timeframe of the plan, individual responsibilities, mapping, and contact information were discussed.

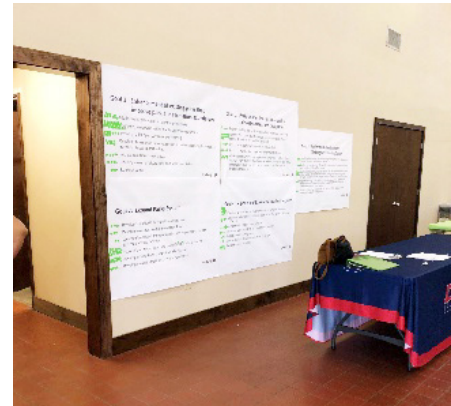
The first meeting with the Parks and Recreation Advisory Board and Staff was held on March 21, 2019 to outline the planning process, start the discussion on the development of the survey, and review the Introduction section of the Plan.

The next meeting of the Parks and Recreation Advisory Board was on April 10, 2019. At this meeting the online and paper surveys were discussed as to form and distribution. Several sections of the Plan were provided for review and comment.

An online survey went live on the City's website on April 15, 2019. Paper copies were available at the Wellness Center and distributed at several city events. The surveys were concluded on May 15 with 455 online surveys received and 286 paper surveys collected.

In May, the staff and Parks and Recreation Board received several more sections of the Plan for review and comment.

On May 10, the Community Meeting was held in the lobby of the Activity Center. The turnout was enhanced by a recreation event that followed the open house format of the meeting. Over 100 people stopped to look at five posters displaying the draft goals. Each person was given three green dots to indicate the ones they liked best or thought were most important. The meeting was widely advertised on the city website and by emails to those signed up for city notices. Flyers were distributed as invitations by Staff and the Parks and Recreation Advisory Board and posted at the Wellness Center and other city buildings. The flyer is in the Appendix.



In June, the initial results of the survey were provided and discussed by the Parks and Recreation Advisory Board and Staff. More than 300 suggestions were provided in the responses to the online survey. The Needs Assessment section of this Plan has the analyses of the two surveys. Copies of both surveys are in the Appendix.

At the July 10 meeting, the Parks and Recreation Advisory Board voted to recommend adoption of the Plan to the City Council.

At the regularly scheduled public meeting of City Council meeting on July 16, the City Council voted to adopt the new Parks and Recreation Plan by resolution. The resolution is included as part of the final document.

In the development of the 2019 Edinburg Parks and Recreation Plan (the Plan), goals give guidance for future activities and facilities. Goals should reflect the desires of Edinburg's citizens, committees, elected officials, and staff—yet be balanced with the realities of accomplishing them. By providing this underlying framework, the Plan better identifies the overall need for parks, recreation and open space improvements for the next 10 plus years. Actions for each goal further defines the steps that are needed, however what is actually undertaken will depend on funding and continued interest.

**Goals** are desires that are used to direct, guide, and promote growth and development. These goals will not be finalized until the results of public input, input from the Parks and Recreation Board and guidance from the staff all come together.

**Actions** are the tools/actual activities that are used to carry out the goals. In many cases the action may be a specific project. These actions will then be prioritized in the Implementation section of the new 2019 Parks and Recreation Master Plan and used subsequent grant applications.

### **Goal 1: Enhancement of existing parks that improve park and recreation experiences**

- Add inclusive playscapes in eight targeted parks
- Add trees, waterwise native plants, and shade structures
- Install smaller open pavilions (party areas)
- Develop fitness areas in parks, such as a challenge course, for increased outdoor fitness opportunities
- Initiate beautification projects.
- Develop areas for leisure time and passive activities
- Re-stock ponds

### **Goal 2: Expand Parks System**

- Develop/build the new North Park on City-owned land
- Develop new sports complex on Davis Road
- Leverage land/funds from park dedication requirements for new and redeveloped facilities
- Acquire land and develop new parks/facilities where needed, particularly a community center on the northern side of the City.
- Develop off-road non-competitive bike facilities
- Develop specialty facilities such as a Planetarium, a regional Zoo and other destination attractions
- Partner with ECISD to build a Natatorium
- Complete the development three gyms and playscapes

### **Goal 3: Parks connections in a network of sidewalks, trails, and bike paths**

- Improve walking trail to Bicentennial Park and future splash pad
- Connect Palm Drive Bike Trail to Ebony Hills Golf course, South Middle School, UTRGV, and 107 Bike Trail
- Continue Jackson Trail to connect to McAllen trails
- Add more walking trails, especially in northwest Edinburg
- Develop a Hike and Bike Trail on the east side along Raul Longoria
- Implement the *2017 Bicycle and Pedestrian Master Plan* to expand connectivity between parks and activity centers



#### **Goal 4: Support and Expand Recreation Programs**

- Continue to provide a variety of outstanding recreation programs
- Add more adult/senior activities such as Tai Chi, Zumba, Arts and Crafts, etc.
- Launch Kayak Program at the WBC
- Provide a wider variety of sport and fitness activities
- Initiate new teen programs.
- Add wellness and nutrition programs for all ages
- Expand aquatic activities

#### **Goal 5: Realize the Potential of the Edinburg World Birding Center**

- Develop a Master Plan for the long range development and management of the Edinburg World Birding Center
- Explore the development of a satellite environmental education program and activities at Ebony Golf Course
- Work with the community, local schools and city departments to establish native habitat for birds and butterflies throughout the Edinburg Area, through initiatives like the Mayor's Monarch Pledge and Living Classrooms
- Implement a large scale wetland restoration project and establish new shoreline and islands within the two large effluent ponds to improve wetland habitat and water quality
- Continue to improve and expand the features of the Edinburg Scenic Wetlands and World Birding Center

These goals and actions were developed by staff, the Parks and Recreation Advisory Board, and the consultant. The public and recreation program users had the opportunity to review and input at the Community Meeting. For the next 10 plus years, these important features of this 2019 Parks and Recreation Master Plan will provide the guidance to move the parks and recreation activities forward in meeting the needs of the City of Edinburg.

In Edinburg, parks and recreation are an important part of daily life and the City provides a variety of active and passive spaces and activities for its residents. In addition to the many sports fields and facilities, residents and visitors can take advantage of picnic facilities (shelters, tables, and BBQ pits), play on play structures, walk on the paths and trails, and generally enjoy the park and recreation environment.

The City of Edinburg Parks and Recreation Department strives to improve and enrich the quality of life for all children, teens, adults, physically challenged individuals, and senior citizens. It is committed to promoting a good, healthy lifestyle and wellness through positive events and family-oriented Parks/Programs that bring the family and whole community together. The following sections are descriptions of the programs that are currently offered during the year.

Currently, the City is divided into 12 park zones as shown on **Map 4.1 - Park Zones**. The parks are generally clustered around the center of the City in Park Zones 5A and 2A. Several of the outlying Park Zones do not have city parks as the areas are less developed, but there is interest in locating parks in those areas.

Each park has a service area which are used to indicate what neighborhoods and surrounding area might be the users of the park. The service areas are shown on **Map 4.2 – Existing Parks Service Areas**. The quarter mile ring indicates the distance someone might easily walk to a park in about five minutes. The one half mile radius suggests that a person might walk or bike to the park in a reasonable 10 minute time span.

There are internal master plans for improving/enhancing all the parks, facilities and programs. to include adding and/or replacing restrooms, picnic shelters, BBQ pits, and play structures (playscapes). At several of the parks , there is room to add splashpads, sand pit volleyball and skateboard facilities. All of the parks are slated to have additional trees and native blooming plants.

The inventory of parks is found on the following pages. Information for each existing park is provided, including location/address, type of park, size, park zone, and for whom the park is named.

Following the Inventory are the Recreation, Sports, Aquatic and World Birding Center programs descriptions and participation rates.

**GIS Map Disclaimer:**

This product is for informational purposes and may not have been prepared for or be suitable for legal, engineering, or surveying purposes. Users of this information should review or consult the primary data and information sources to ascertain the usability of the information. The user of information found agrees to these terms by using the data provided. City of Edinburg and the software developers assume no legal responsibility for the information.

**NEIGHBORHOOD PARK ZONES**

DEPARTMENT	MONTH	YEAR
PARKS AND RECS	JULY	2019

**LEGEND**

- CITY LIMITS
- PARKS
- PARK ZONES
  - 1A
  - 2A
  - 2B
  - 2C
  - 3A
  - 3B
  - 4A
  - 4B
  - 4C
  - 5A
  - 5B
  - 6A
  - 6B

**GIS Map Disclaimer:**  
This product is for informational purposes and may not have been prepared for or be suitable for legal, engineering, or surveying purposes. Users of this information should review or consult the primary data and information sources to ascertain the usability of the information. The user of information found agrees to these terms by using the data provided. City of Edinburg and the software developers assume no legal responsibility for the information.

**THE CITY OF Edinburg**  
Engineering

**PARK SERVICE AREAS**

SCALE: 1 in = 4,000 ft  
PROJECT NAME: \_\_\_\_\_ SHEET 1 OF 1  
FILE NAME: \_\_\_\_\_  
DEPARTMENT: \_\_\_\_\_ MONTH: \_\_\_\_\_ YEAR: \_\_\_\_\_  
PARKS AND RECREATION: \_\_\_\_\_ JULY, 2019

**Legend**

- CITY LIMITS
- PARKS
- 1/4 MI SERVICE AREA
- 1/2 MI SERVICE AREA

### MEMORIAL PARK

**Address:** 1212 E Sprague Street

**Size:** 14.99 Acres

**Classification:** Community Park

**Park Zone:** 5A

This medium-sized family-friendly park includes active sports facilities for baseball, softball (including bleachers), and basketball, and tennis courts.

There are picnic shelters, picnic tables, BBQ pits for great get-togethers.

Other amenities are restrooms, playscapes, benches, restrooms, and ample parking.



## **BICENTENNIAL**

**Address:** 2202 W Sprague Street

**Size:** 9.82 Acres

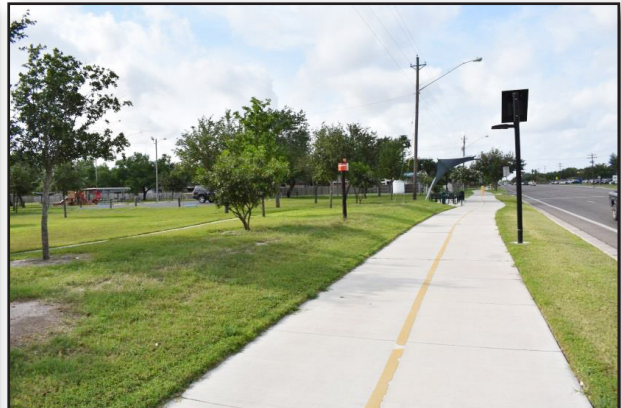
**Classification:** Community Park

**Park Zone:** 2A

**Origin of Name:** This park was named in honor of the 200th anniversary of the United States.

The three baseball/softball fields have bleachers for watching the games.

There are picnic shelters with tables and BBQ pits . Restrooms , park benches, water fountains and a playscape add to the pleasant park experience for all ages. Parking spaces are included on the park grounds.



### **DR GILBERT DIAZ PARK**

**Address:** 2002 W Sprague Street

**Size:** 5.45 Acres

**Classification:** Neighborhood Park

**Park Zone:** 2A

**Origin of Name:** Dr. Diaz was a doctor in Edinburg that supported the park system

This 5.45 acre park provides recreation opportunities for nearby residents.

There is a basketball court and 10 fitness stations along a walkway and two playscapes for younger children.

Picnic facilities include shelters, tables, BBQ pits are there for picnics and parties.

Park benches and water fountains make the park a leisure destination and there are plenty of parking spaces



## **FRONTIER PARK**

**Address:** 900 N 1st Avenue

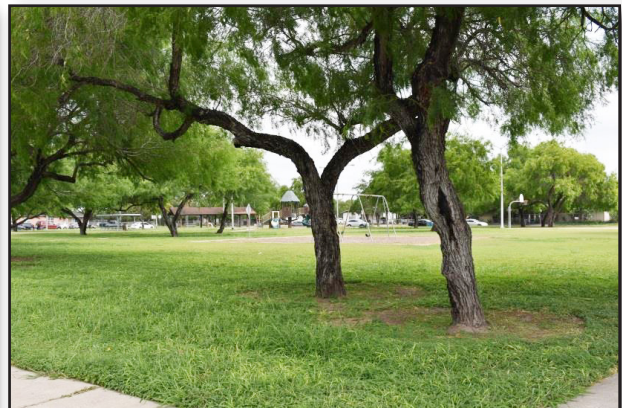
**Size:** 2.41 Acres

**Classification:** Neighborhood Park

**Park Zone:** 2C

**Origin of Name:** Theme of the park at the time of development

As a neighborhood park, Frontier Park is a place to play basketball, have picnics. There are two playscapes and a swing set in addition to several park benches.



## **NORMA LINDA TREVINO CITY/SCHOOL PARK**

**Address:** 909 S Mon Mack Road

**Size:** 10.35 Acres

**Classification:** City/School Park

**Park Zone:** 2A

**Origin of Name:** Norma Linda Trevino was a much loved and respected educator in Edinburg

This City/School park is a joint venture between the City of Edinburg and Edinburg Consolidated School District. It is on the grounds of the Norma Linda Trevino Elementary School. The park is fenced and open to the public after school hours

There are two soccer fields with bleachers, a basketball court, picnic shelters and tables. In addition to 18 park benches, there are restrooms, two playscapes and a swing set. The numerous parking spaces are shared with the school.



## **CITRUS PARK**

**Address:** 1700 John Avenue

**Size:** 0.96 Acres

**Classification:** Mini-Park

**Park Zone:** 1A

**Origin of Name:** The name is a reminder of the citrus crops which are so important in the Valley.

Although small, this mini-park is a fun place to go. There is a basketball court and a playscape with a walking path.



### **CENIZO PARK**

**Address:** 424 W Sprague Street

**Size:** 5.45 Acres

**Classification:** Neighborhood Park

**Park Zone:** 2A

**Origin of Name:** The name for the park comes from the Cenizo—small native shrubs that bloom small pink and purple flowers in response to humidity and moisture.

This park has three picnic shelters, three picnic tables, and a BBQ pit. There is a basketball court and a playscape.

The park also has a walking trail complete with benches, water fountains, trashcans, and a restroom.



## **WEST PARK**

**Address:** 402 W Stubbs Street

**Size:** 2.40 Acres

**Classification:** Neighborhood Park

**Park Zone:** 2A

This neighborhood park is located on the west side of the City. In addition to the picnic shelters and tables, there are two playscapes, swing sets, restrooms, and fitness station. There is a basketball court and a backstop.



### **SOUTH PARK**

**Address:** 300 E Palm Drive

**Size:** 12.75 Acres

**Classification:** Community Park

**Park Zone:** 6A

Adjacent to the Wellness Center and Activity Center this is a very busy park. One of the main features of this centrally located park is the swimming pool. There are picnic shelters and tables, a playscape and two tennis courts. Over 200 parking spaces are available close by.



## FREDDY GONZALEZ PARK

**Address:** 1402 S Veterans Boulevard

**Size:** 9.25 Acres

**Classification:** Neighborhood/Community Park

**Park Zone:** 5A

**Origin of Name:** This park was named in honor of Freddy Gonzalez, a Vietnam war hero.

This is a family activity centered park, a place to meet and have fun. There are park benches, picnic shelters and tables, a playscape and numerous parking spaces.

The Edinburg Splashpad is located in this park. Water rings, bucket drops, and fun showers are just a few of the great features this park has to offer.



### JAYCEE PARK

**Address:** 420 S 19th Street

**Size:** 2.53 Acres

**Classification:** Neighborhood Park

**Park Zone:** 5A

**Origin of Name:** The Jaycees are a civic organization active in park activities.

A Baseball/Softball field with bleachers and a basketball court make this park a great place for sports minded families and groups. There are picnic tables, restrooms, a walking trail, and ample parking.



## **APOLLO PARK**

**Address:** 502 E Peter Street

**Size:** 2.49 Acres

**Classification:** Neighborhood Park

**Park Zone:** 5A

**Origin of Name:** Original equipment had a space theme

In addition to a basketball court and back stops, there are picnic shelters, tables, and BBQ pits. Two playscapes, fitness stations, and swing set provide places to play and exercise.



## **WILL LOONEY LEGACY PARK**

**Address:** 702 Cullen Street

**Size:** 12.02 Acres

**Classification:** Community/Neighborhood Park

**Park Zone:** 5B

**Origin of Name:** This park is named in honor of a young man who tragically lost his life in a car accident.

Focused on active sports, this park has Soccer fields, bleachers, tennis courts, a basketball court, a playscape and restrooms with ample parking.



## FOUNTAIN PARK

**Address:** 1201 E Kuhn Street

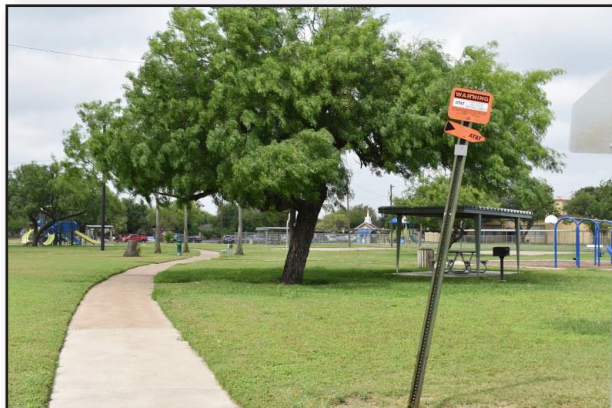
**Size:** 3.51 Acres

**Classification:** Neighborhood Park

**Park Zone:** 5A

**Facilities:** This neighborhood park has two basketball courts, two playscapes, fitness stations, swing set and picnic facilities.

One block away is the Fountain Swimming Pool at 1227 East McIntyre. This is a kidney shaped swimming pool, with bathing facilities, a 70 foot waterslide, a sand-pit volleyball court, tetherball, barbecue grill, and a picnic area.



## JANET VACKAR SPORTS COMPLEX

**Address:** 3105 N Doolittle Road

**Size:** 23.88 Acres

**Classification:** Sports Complex

**Park Zone:** 5B

**Origin of Name:** Janet Vackar is an active local Rio Grande Valley philanthropist.

Focused on active sports, this facility provides baseball/softball and soccer fields and basketball courts. There are large shelters with picnic tables. There are numerous other facilities for activities including tennis courts, fitness stations and a playscape. Restrooms and a large parking lot make this a sports destination.



## **MUNICIPAL PARK**

**Address:** 714 S Raul Longoria Road

**Size:** 155.66 Acres

**Classification:** Community/Regional Park/Sports Complex

**Park Zone:** 5A

As the largest park in the park system, Municipal Park sees daily usage for ballgames, tournaments, family activities, and city events.

There are nine baseball/softball fields with bleachers. Picnic facilities include shelters, tables and BBQ pits—enough for large parties and gatherings. Fitness stations and benches are located along an extensive walking trail. Play areas include playscapes. There are two ponds for fishing.



## ESCANDON CITY/SCHOOL PARK

**Address:** 1100 E Trenton Road

**Size:** 10.27 Acres

**Classification:** City/School Park

**Park Zone:** 6A

This park was developed in cooperation with Edinburg Consolidated Independent School District's Escandon Elementary School. There is a soccer field with bleachers, a basketball court, picnic shelters and tables, three playscapes, restrooms, and 125 parking spaces.



## **EDINBURG MUNICIPAL WATERPARK**

**Address:** 125 E. Palm Drive

**Size:** in Municipal Park

**Classification:** Special Purpose

**Park Zone:** 5A

The Edinburg Municipal Waterpark is a three (3) pool facility which features a 125 foot long figure eight water slide. Other amenities include a sand-pit volleyball court, tanning area, barbecue grills, picnic tables, and water basketball. The waterpark is located on



## EDINBURG WORLD BIRDING CENTER AND SCENIC WETLANDS

**Address:** 714 S Raul Longoria Road

**Size:** 40 Acres

**Classification:** Regional/Special Purpose

**Park Zone:** 5A

The Edinburg Scenic Wetlands and World Birding Center offers spectacular wildlife views along with unique natural and educational experiences. Colorful native plants and overlooked water resources combine to recreate an endangered wetlands environment at the Edinburg Scenic Wetlands. Shallow ponds attract water-loving creatures, sheltered by fringes of native growth. Around the interpretive center, butterflies vie for nectar from six acres of colorful flowering beds, grown according to nature's original native design.

The Interpretive Center exhibits offer information on wetlands, birds, butterflies and dragonflies. The Education Classroom is home to our fifth grade wetland program along with many other programs and activities. Surrounding the Interpretive Center, the 3.5 acre native butterfly habitat offers some of the most diverse habitat in the region. Our water features include two large wetland ponds, a canal, a dragonfly pond, Discovery Pond, and more including a 2.5 mile walking trail.



TABLE 4.1 INVENTORY OF PARK FACILITIES

PARK NAME	Splash pads	Baseball/Softball	Soccer Fields	Basketball Courts	Back Stops	Bleachers	Picnic Shelters	Picnic Tables	BBQ pits	Trashcans	Park Benches	Water Fountains	Playscapes	Fitness Stations	Swing sets	Parking Spaces	Restrooms	Tennis Courts
Bicentennial		3				9	16	18	10	19	1	1	1			160	1	
West				1	1		4	6	1	9	4	1	2	1	1		1	
Cenizo				1			3	3	1	10	7	2	1				1	
Freddy Gonzalez	1						7	9	7	16	13	1	1			84	1	
Memorial		2		2		12	27	63	26	46	12	2	3			200	2	1
Fountain				2			6	8	7	6	7	1	2	1	1			
Jaycee		1		1		4	1	4	1	6		1	1			40	1	
Apollo				1	1		4	9	3	5	11	1	2	1	1			
Municipal		9		2		28	51	62	47	80	14	5	4	5	1	1,047	5	
Looney Memorial			2	1		6				6		1	1			63	1	1
Dr. Gilbert Diaz				1			12	15	10	18	15	1	2	10		66		
Trevino City/School			2	1		11	5	7	2	19	18	1	2		1	320	1	
Escandon City/ School			1	1		2	12	16	4	23	13	1	3			125	1	
Vackar Sports Complex		2	4	3		12	3	6	4	31	12	2	1	10		112	1	4
Citrus				1						2	4	1	1					
South				2			3	5	3	8	2	1	1			205	1	2
Frontier				1			4	9	2	5	7	1	2		1			

## SPORTS AND WELLNESS CENTER

**Address:** 315 East Palm Drive

**Size:** 84,000 square feet

**Classification:** Indoor Recreation

Park Zone: 5A

The Sports and Wellness Center is the indoor recreation center providing a variety of recreational and educational programs year round.

The building was opened in 2014 as a joint partnership between the RGV Vipers, the City of Edinburg and the Edinburg Economic Development Corporation to serve as the official practice facility of the RGV Vipers, the NBA Development League of the Houston Rockets.

Facilities include the Park and Recreation Department offices, eight basketball courts, volleyball courts, four dance studios, computer labs and a gaming room. There is space for boxing, Mixed Martial Arts and group fitness classes. A portion of the building is leased to the Doctors Hospital at Renaissance Wellness Center.



## ACTIVITY CENTER

At 125 East Palm Drive is the Activity Center, a 10,000 square foot space for large meetings and recreational activities.



## RECREATION PROGRAMS

The City of Edinburg Parks and Recreation Department is responsible for providing as many Family Leisure Recreation Parks as possible with the resources made available by the municipal government. The mission is to offer families in our community daily leisure at free, family-friendly, quality recreation time at our parks to unwind, participate, and interact, individually or in group-structured programs.

### KARATE CLASSES

#### Karate Beginners

The Beginners Class will learn basic karate and self-defense skills that promote self-discipline, control, and respect. Basic blocks, punches, kicks, stretching exercises, proper breathing techniques, proper fall techniques, and sparring methods will be taught along with demonstration throughout the course.

#### Karate Yellow Belts

Yellow Belts will continue their skills and knowledge in the art of Yellow Tiger Goju-ryu Karate. The Yellow-belt students will become familiar with the etiquette and procedures of the dojo – training school, and their movements. At this stage, training will focus mostly on learning how and when to apply punches, kicks, and blocks. A long form or kata – choreographed movements, some short combinations, and more self-defense techniques will also be taught.

#### Karate Intermediate

To participate in Intermediate Karate class, students must have a good grasp of all basic material arts moves and be knowledgeable in the art of karate. Students will be taught additional sparring techniques. This is a more physically challenging class.

#### Karate Advanced

Students must have achieved a belt rank of at least Brown or have permission of the head instructor to participate in Advanced Karate class. This class assumes proficiency in the basic techniques and focuses on advanced kicking, sparring, and weapons training. Competition and karate tournaments become a monthly attendance of sanctioned martial arts tournaments.

### BOXING AND FIGHTING ARTS

#### Tiny Tots Boxing

Youth Boxing class teaches basic boxing skills and techniques, such as stance, guard movement, jab, cross, and hook. It increases strength and improves endurance. Youth boxing class will include cardio calisthenics, shadow boxing, bag work, partner drills, pad work, and core strengthening exercises. These skills will give children self-defense tools, as well as self-confidence, while keeping them physically fit.

#### Recreational Boxing

Boxing Skills, Drills, and Techniques is a class designed for students who have the boxing basics, but want to receive more technical instruction in boxing, both offensively and defensively. Skills such as parrying, pivoting, bob weaving, counter punching, and various combinations will be learned on a class-to-class basis, and you will get interactive “live” looks by working with a partner on the gym floor.

#### Kickboxing & Fighting Arts

Kickboxing class teaches basic, intermediate, and advanced kickboxing, Muay Thai, and western-style boxing skills, and combinations. Kickboxing classes include cardio calisthenics and bag work,

which includes punch, kick, and elbow strikes, partner drills, and pad work, in addition to core-strengthening exercises. Along with sparring sessions and competition, kickboxing matches may be scheduled with instructor's approval.

### **MMA and Fighting Arts**

MMA classes utilize the best of the arts of Boxing, Wrestling, Karate, Kickboxing, Muay Thai, Brazilian Jiu-Jitsu, and many other sports based martial arts systems. The required equipment includes gloves, mouthpieces, and wraps.

## **CHEERLEADING AND ACROBATICS AND TUMBLING**

### **Pre School Cheer**

Students from ages 4-6 will learn the basics of cheerleading and team building and will concentrate on cheer arm motions, jumps, flexibility, cheers and dances.

### **Little Cats Cheerleading**

Students from ages 7-12 will learn more basics of cheerleading and team building. In this class, we will concentrate on cheer arm motions, jumps, flexibility, cheers, basic stunts, and dances.

### **Advanced Cheernastics**

This class does not have an age limit; placement is based on skills. Requirements for this class is mastery of flexibility, arm motions, jumps, handstands, cartwheels, two—and-one-hand cartwheels, round offs, front walkovers and back walkovers. This class teaches complex cheers and dances that include tumbling. This class will perform in scheduled sport league games.

### **Tiny Tots Tumbling**

Students from ages 4-6 learn basics of acrobatics and tumbling. This class concentrates on flexibility, handstands, cartwheels, two-and-one-hand cartwheels and round offs

### **Acrobatics and Tumbling**

Students from ages 7-12 learn basics of acrobatics and tumbling. This class concentrates on flexibility, handstands, cartwheels, two-and-one-hand cartwheels, round offs, front walkovers and back walkovers. This class moves at a fast pace based on age and abilities.

### **Advanced Acrobatics and Tumbling**

This class does not have an age limit; placement is based on skill. Requirements for this class are mastery of flexibility, handstands, cartwheels, two-and-one-hand cartwheels, round offs, front walkovers and back walkovers. This class concentrates on back handsprings, front handsprings, back tucks, aerials and a combination of tumbling passes. Competitions are held during scheduled classes. Performances throughout the year are scheduled to showcase abilities and advancement that have been acquired through these classes. \*Parents are responsible for providing uniforms for student's performances.

## **ARTS AND CRAFTS CLASS**

### **Discover the Artistic World of Drawing**

Students will have the opportunity to explore color, line, texture, shape and patterns through hands on experiences with painting, collage, crafts, and basic techniques teaching how to draw by training your eye and hand to work together.

### **Sample Crafts**

This class will expose students to a variety of art activities and mediums on a weekly basis. Students are exposed to pencil and charcoal, watercolors, paper mâché, and a mixture of

colorful miscellaneous arts and crafts. Participants will partake in fine drawing, which will include composition, light and shading, values, and perspectives.

**Pencil & Charcoal**

This art class features pencil and charcoal drawing for three-dimensional objects and shadows. Students will learn to draw the head from various angles, the planes of the face, and the proper ratios of facial features (for men, women, and children). The combination of these skills will allow students to draw complete, fully rendered portraits in pencil or charcoal.

**Watercolor Painting**

While enjoying an afternoon of experimentation and fun, participants will learn the fundamentals of watercolor and the basic techniques all watercolorists use in every painting. The student will be introduced to color, how to mix and how to use it. Mixing yellow, red, and blue to make all colors needed is a simple concept, which uses a limited palette of colors and guarantees color harmony in paintings.

**DANCE AND FOLKLORIC CLASSES DESCRIPTIONS****Pequeos Dazantes**

Our Mission is to continue educating our Tiny Tots and youth about our Mexican heritage through our traditional dancing. Students will learn basic steps each session, including footwork, skirt work, and choreography.

**Folkloric Dance Beginner Level I**

This class is for students who have been promoted from the beginner's class. Students are expected to have adequate body coordination and should know basic Folkloric footwork patterns. Students are taught more challenging dances at a faster pace than the beginner class.

**Folkloric Dance Beginner Level II**

Students are expected to have strong control of their body and feet and should be able to participate in challenging choreographies. Students are also expected to periodically attend extra rehearsals in preparation for performances. They will also learn different dance routings from different regions of Mexico.

**Folkloric Dance Intermediate/Advanced**

Students in this class learn individual, team, and partners difficult footwork combinations, complex choreographies, and advanced performance character and stage presence. They will perform using many different artifacts that represent the Mexican culture. Students are expected to know the history and differences between Mexico's many dance customs. This group is the performing group that will represent the City of Edinburg Parks and Recreation Department.

**Zumbatomic Dance for Kids**

This wonderful class features child-friendly routines based on original Zumba dancing choreography. We break down the steps, add games, activities, and cultural exploration elements into the class structure. The benefits this class provides help develop a healthy lifestyle and incorporate fitness as a natural part of children's lives by making fitness fun. Classes incorporate key childhood developmental elements, such as leadership, respect, teamwork, confidence, self-esteem, memory, creativity, coordination, and cultural awareness.

**Family Social Dancing**

Family Social Dancing is a partner and family dancing class that is informal and relaxed. This class creates a social dancing experience, making a loving memorable experience for everyone. It's for

enjoyment, socialization, recreation and health. This class is very dynamic. The types of social dances and styles change with the times. The class will consist of salsa, cha-cha, rumba, samba, swing, jitterbug, twostep, and tango.

### **MUSIC CLASSES**

#### **Guitar Youth Beginner Level I**

This class is designed for beginners on the guitar or players who would like to fill in the gaps in their basic overall knowledge of the instrument. The goal is to have students playing quickly. This course will cover fingerboard knowledge, basic techniques, chords, strumming, basic improvisation, basics of finger-style technique, sight reading. Introduction to reading music, rhythm studies, chord studies and strumming. \*Students must bring their own guitar and book to class.

#### **Guitar Youth Beginner Level II**

This class continues to expand the students' knowledge with their guitar skills. Level II Guitar is more advanced and teaches students to play entire songs, while having to sight read and understand melodic technique. Students with guitar experience may speak with the Instructor prior to registering for class for proper placement. \*Students must bring their own guitar and book to class.

#### **Guitar Intermediate/Advanced**

This class is designed for performances. Students at intermediate/novice level, music sight reading and chord progression studies. Music theory and practices. This class will cover an instruction to lead into music ensemble class, music history and conducting. \*Students must bring their own guitar and book to class.

#### **Piano/Keyboard**

Our individual piano/keyboard lessons offer a full range of child-friendly lessons for all ages and abilities. Piano/Keyboard lessons for beginners focus on piano basics, learning to read notes, read rhythms, play scales, play basic chords and other tools essential to playing any style of music. Our recreation-trained instructor will help each person to learn piano/keyboard in a style that caters to the student's musical interest and unleashes individual creativity. We provide lessons suited for the novice or expert. Each lesson is one-on-one with the instructor and is catered to each student, allowing for maximum attention and progress. Our instructors want students to feel passionate about music and need to know the individual's favorite style of music.

### **SENIOR MEMBERSHIP PROGRAM DESCRIPTION**

#### **Adult Membership Program**

Edinburg Parks and Recreation Department plans to offer a seasonal senior membership program. Membership will include access to the game room, gymnasium, dance studios, library, arts and crafts, theater room, and, occasionally, a workout room. They will have access to programs to help them be physically fit, learn new hobbies, and make new friends.

#### **Senior Members Nutrition Meals Program**

In partnership with ECISD and the Boys and Girls Club, the department will provide healthy meals and snacks to senior (55 and over) members during the school year.

### **TEEN MEMBERSHIP PROGRAM**

#### **Teen Membership Program**

The Edinburg Parks and Recreation Department is now offering a teen membership program. Joining members become part of the community of Edinburg, the All American City, which greatly supports each other. A membership includes access to the game room and gymnasium and provides

an opportunity to work on fitness, learn new skills, develop new hobbies, and make new friends.

\*This membership is seasonal and operates from September to May, Friday from 5:00 p.m. to 10:00 p.m. The teen membership program will provide open recreation, a safe place, and a fun and active environment in which teens can socialize, build self-esteem, and make new friends.

## **YOUTH MEMBERSHIP PROGRAM**

### **Youth Membership After School Program**

Our daily after school camp for youth members (ages 6-12) provides a safe, fun, and active environment in which children can develop new skills, self-esteem, and friendships. The well-trained staff conducts cultural and social activities and sports and games. The youth members have access to the entire building, which houses four (4) full-size gymnasiums, a computer lab for fun and to enhance typing skills, Rotary Reading Room, which has more than 1,000 books for members to use to enhance reading and literacy skills. Members also learn to communicate and cooperate in other play areas, such as Game, Gaming Room, four dance studios, and Movie Room. Activities vary from week-to-week and are designed to be age appropriate.

### **Summer Youth Membership Camp:**

The Edinburg Parks and Recreation Summer Day Camp is run by the Parks and Recreation Department. The support of the Recreation Department enables the Summer day Camp to offer children a safe and fun camp environment. This support is reflected in the availability of gymnasium, Game, Gaming Room, Discovery Room, Edinburg Rotary Reading Room, Movie, Dance Studios and Arts and Crafts classrooms and equipment, as well as the hiring, training and education of qualified employees. Summer Members are allowed on weekly field trips, swimming field trips, and bi-weekly dance competitions, including presenters throughout the summer. Summer hours of operation are from 7:30 a.m. to 5:30 p.m. for children ages 6-12 years of age.

### **Youth and Teen Members Nutrition Meal Program**

In partnership with ECISD and the Boys and Girls Club, the department will provide healthy meals and snacks to youth members on a year round basis. In addition to the nutrition program, a safe place is provided where a child can be involved in educational, recreational, and social activities.

### **Recreation Division Participation**

There are approximately 1,156 participants annually in 26 Family Leisure Programs that provides over 72 hours of programming weekly.

In the Membership Program there is Summer Youth Program that provides an average of 10 hours a day of programs and activities for over 750 children between 6 and 12.

## **ATHLETICS DIVISION**

This Division provides the coordination and management of athletic programs. There are four seasonal programs that provide indoor and outdoor opportunities to play on organized teams. The following are descriptions of the programs.

### **Junior High and High School Basketball Leagues**

There are two different leagues, one for boys and one for girls. The players learn the art of playing together as a team with players for the upcoming year. The league assists these players to prepare for the upcoming year. A total of 10 games are played against other schools' teams from around the Valley. There is an end of the season tournament.

##### **Junior High and High School Volleyball Leagues**

Both boys' and girls' leagues are focused on the art of playing together as a team and getting them prepared for the upcoming year. A total of 10 games are played against other schools' teams from around the Valley. There is an end of the season tournament.

##### **Adult Basketball Leagues**

The women and men who participate in this league use play to stay in shape and have a healthier lifestyle. The adult players use this time to relax and release some stress in a fun and stress free environment.

##### **Adult Softball Leagues**

The women and men who participate in this league use play to stay in shape and have a healthier lifestyle. The adult players use this time to relax and release some stress in a fun and stress free environment.

##### **Adult Co-Ed Volleyball League**

The women and men who participate in this league use play to stay in shape and have a healthier lifestyle. The adult players use this time relax and release some stress in a fun and stress free environment.

##### **Youth Flag Football League**

This purpose of this league is to teach basic football skills and fundamental techniques of stance, movement, throwing passes, catching passes, running with the football, and blocking techniques. These skills give kids a better understanding and concept of how to play football, and develop self-confidence while keeping physically fit.

##### **Youth Tackle Football League**

This league is to teach the participants the basic football skills and fundamental techniques, such as; football stance, movement, throwing passes, catching passes, running with the football, blocking techniques, and the proper way of tackling the opponents. These skills will give kids a better understanding and concept of how to play tackle football, as well as give them self-confidence while keeping them physically fit.

##### **Youth Basketball Leagues**

The league is to teach the boys and girls basic basketball skills and fundamental techniques such as defensive basketball stance, movement, passing the basketball, dribbling the basketball, shooting the basketball. These skills will give the participants a better understanding and concept of how to play basketball, as well as give them self-confidence while keeping them physically fit.

##### **Youth Volleyball League**

The league teaches girls basic volleyball skills and fundamental techniques such as; defensive volleyball stance, movement, passing the volleyball, bumping the volleyball, spiking the volleyball and serving the volleyball. These skills give the girls a better understanding and concept of how to play volleyball, as well as giving them self-confidence, while keeping them physically fit.

##### **Youth Track Program**

This program teaches boys and girls between the ages of 5 and 18 basic skills and techniques of track. The coaches teach the participants endurance and running techniques, as well as shot put, high jump, hurdles, triple jump, and long jump. Practices are Mondays through Thursdays with meets are on Fridays. At these meets, they compete in their respective events with other kids in our area. These skills will give participants the tools as well as self-confidence while keeping them physically fit.

### Tennis Program

This program is to teach boys and girls between the ages of 5 and 18 basic skills and techniques of tennis. The coaches teach endurance and techniques as well as the proper way of playing tennis. Practices are Mondays through Thursdays. On Fridays there is the opportunity to compete against other youth in our area. These skills will give participants the tools as well as self-confidence while keeping them physically fit.

The programs are very popular and have increased each year. The following chart shows the average of the participation in the past three years.

TABLE 4.3 ATHLETICS PARTICIPATION		
Sport	Teams	Athletes
Junior High & High School Basketball	92	920
Junior High & High School Volleyball	60	720
Adult Basketball	18	180
Adult Softball	29	435
Co-Ed Volleyball	11	110
Youth Flag Football	30	360
Youth Tackle Football	15	300
Youth Volleyball	30	360
Track		325
Tennis		50

## AQUATICS DIVISION

The Aquatics Division is responsible for providing aquatic programs for families, daily public swim times, and family friendly leisure times. The Division's objective is to inform the public about water awareness, teach individuals of all ages how to swim, and most importantly ensure public safety when visiting aquatic facilities. Below are the programs provided by the Division.

### LEARN TO SWIM PROGRAMS

#### Parent and Child Aquatics (16 months to 47 months)

Parents and children learn together to increase a child's comfort level in the water and build a foundation of basic skills, such as arm and leg movements, and breath control. The two levels are fun-filled and help introduce water safety concepts, encouraging a healthy recreational habit that your entire family can enjoy. Class is held only in the evening, and class size is limited to 20 students.

#### Preschool Aquatics (4 to 5 years old) - Morning & Evenings

Throughout the three levels, preschool-age children are taught basic aquatic safety and swimming skills, while increasing their comfort level in and around the water. Skills are age-appropriate, helping children achieve success on a regular basis and enjoy social interactions with other children. As in all swimming and water safety courses, three levels are provided.

#### Learn-to-Swim (children 6 years through 14) - Morning & Evenings

Designed to help participants achieve maximum success, Learn-to-Swim courses are based on a logical, six-level progression that helps swimmers of varying ages and abilities develop their water safety, survival and swim skills. Six levels are provided from an introduction to water skill proficiency.

## AQUATICS PROGRAMS

### Adult Learn-to-Swim

This is an evening program for adults 15 years of age and older who wish to learn to swim or improve on their existing skills. Specialized instruction is by a certified Water Safety Instructor.

### Lap Swim

What a better way to get into shape than by swimming laps! Swim at your own pace. A qualified instructor will be on duty to assist in stroke development and consultation. This activity is for participants 15 years and older.

### Water Jogging

This is an excellent way to run with less stress on the leg joints and lower back. The aqua belt suspends individuals in a vertical position while running in the water. Swimming ability required. Class is for participants 15 years and older

### TAAF Swim Team

This is a training and completion program. Qualifying regional swimmers will compete in The Games of Texas in selected location throughout Texas. Participants are from 6 to 15 years of age, who have gone through Level IV, or have the ability to perform the following strokes: front crawl, back crawl, breaststroke, butterfly, swim 50 yards comfortably, and wish to swim competitively. Swimming meets are scheduled throughout the summer.

<b>TABLE 4.4 AQUATICS PARTICIPATION</b>			
<b>Edinburg Municipal Waterpark</b>	<b>2016</b>	<b>2017</b>	<b>2018</b>
Public Swim	11,000	11,400	11,000
Learn to Swim	2,250	2,540	2,706
Private Rentals		3,400	1,665
Fountain Pool			
Public Swim	1,650	700	Repairs
Splash Pad		13,500	15,000
	14,900	20,140	30,371

## EDINBURG SCENIC WETLANDS AND WORLD BIRDING CENTER PROGRAMS

The Edinburg Scenic Wetlands and World Birding Center (EWBC) provides classes and field trips for all ages in the following programs:

### Summer Survival Series

This program teaches outdoor skills over several weeknights, capped with a “survival challenge” race that put the newly acquired skills to use. Each year, the series is set within an apocalyptic theme using skills as fire building, knot tying, edible and medicinal plant ID, navigation, traps and snare, and more.

### “Toddler Play Dates”

Each month there is a different nature based theme and do a series of indoor and outdoor activities for the toddlers and parents. This past year there were a water theme, mud theme, baby animal theme and more. Activities often include storytelling, puppet shows, crafting, outdoor play and exploration.

**Summer Day Camps**

These are weeklong camps for different age groups, including a 3 day toddler day camp (with parents), and 4 day camps for ages 5 and up. All camps include indoor and outdoor components with a focus on nature, wildlife, and outdoor exploration.

**Skills- Based Program Series for Adults**

This series includes Advanced Birding Classes (Wintering Ducks, Migrating Songbirds, Hawk ID), Wildlife Gardening and Design Series, and Nature Crafting. These programs attract retirees and Winter Texans.

**Weekly Bird and Butterfly Walks**

In the Fall through Spring Seasons, the walks focus on the birds and butterflies in our garden. We see close to 200 species of birds a year on the grounds.

**Adult Educator Training in Project WILD and Wow the Wonders of Wetlands**

Currently, we contract with Workforce Solutions to provide training in Growing Up Wild and Project WILD to area day care centers.

**Angler Ed Program**

In partnership with Texas Parks & Wildlife, this very popular fishing program is offered several times a year. All ages can learn basic and advanced fishing skills of knots, baits/lures, fish identification and regulations. Then, students can practice their casting with a rod and reel combo. A certificate is presented upon completion of the course.

**Field Trips To Our Site For Area Students**

This activity serves more than 6,000 students by providing a destination for field trips throughout the year. Fifth graders from the Edinburg Consolidated School District participate in the “Wetland Program” a three to four hour field trip focused on wetland investigations. Students learn about water testing (macro-invertebrate testing and water quality testing), microscopic pond life observation, and wetland modeling.

For high school students, there is a similar Wetland program for their age group. Beyond the activities mentioned above, they also engage in soil testing. The high school program is a four hour program. On average we have 150 students a year for this program over the course of two weeks.

Field trips are not just for kids. Tours of our grounds are requested by adult groups through the year, especially the winter. Popular site for self-led birding tour groups and UTRGV/STC classes are hosted at the EWBC.

In the past three fiscal years (October through September), there has been a steady increase in visitors, programs, and tours as shown in **Table 4.4 - EWBC Visitation**

<b>TABLE 4.4 EWBC VISITATION</b>			
	FY 15-16	FY 16-17	FY 17-18
TOTAL Center Visitors	23,200	21,439	27,553
Adults	2,301	2,593	2,862
Children	1,307	1,250	1,459
Non-Member 5 & Under	644	770	788
Seniors	1,647	1,526	2,167
Members	1,140	1,270	1,175
Reciprocal Membership	6	6	14
Self-Led Tours - Paid	437	351	318
Self-Led Tours - FREE	146	286	161
Grounds (No Entrance)	1,676	1,287	910
South Pond User Estimate	1,821		4,700
Free Entry (Walk-Ins)	4,919	925	1,502
Free Program/ Event*	1,544	4,827	4,578
Programs & Tours	5,612	1,452	1,497
School Programs	4,089	4,896	5,422
Outreach		4,397	4,357
Volunteer/ Exhibitor		586	439

#### **Off-site Tours**

These tours include native plant and ethno-botany tours of Rancho Lomitas in Rio Grande City and Butterfly Hot-spot tours.

#### **Semester Internship Program**

There are student internships in nursery management, habitat management, wildlife study, marketing, environmental education programming and outreach that lead to actual to jobs.

### **COMMUNITY SPECIAL EVENTS**

The Parks and Recreation Department hosts and or coordinates the following event each year.

- Earth Day Arbor Day 3-4 per times a year
- Trash Bash
- Recreation Programs Annual Recital - July
- All America City 10K Run/Walk - February
- Fiesta Edinburg Parade – February
- Fiesta Edinburg Celebration at the Municipal Park (Folkloric) – February
- City of Edinburg Parks & Recreation Department Easter Egg Hunt Festival – March
- Cardboard Boat Race
- FESTIBA - March
- Art in the Park - April
- Cool City Celebration
- El Dia de los Ninos - April

El Dia de las Madres - May  
Employee Appreciation Picnic  
Summer Camp June - August  
Cinco de Mayo - May  
4th of July Fun Run - July  
National Night Out - August  
16 de Septiembre - September  
Halloween Festival - October  
A Halloween Trick or Treat  
"Edinburg Cares" Food Drive - November  
"Edinburg Cares" Thanksgiving Luncheon - November  
Dia de los Muertos Presentation  
Veterans Day Parade - November  
Toy Drive and Distribution - December  
Christmas members luncheon and toy distribution - December  
Night of Lights - December  
Family Movie Night on Fridays - February  
Father's Day - June  
Cinco De May - May  
Lemonade Stand for First Responders - October  
Grandparents Night - September  
Fairy Festival at the Edinburg World Birding Center  
RGV Coastal Expo, co-hosted with Texas Parks & Wildlife

The City of Edinburg is a leader in providing parks and recreation programs in the Rio Grande Valley.

A park system should have a variety of sizes and types of parks and recreation facilities that meet individual interests and needs, ensure adequate and inclusive opportunities, and encourage use by all age groups. By looking at a set of standards for parks, recreation areas, and open space the community's parks and recreation uses, needs, and desires can then be determined.

In a Parks Master Plan, there are common principles that should be considered to ensure balance between the public and private sectors; indoor and outdoor opportunities; and the integration of spaces, services, and facilities. The following are principles for the parks and recreation for this plan.

- Open and inclusive access to recreational areas, activities, services, and facilities regardless of personal interest, age, gender, income, cultural background, housing environment, or ability
- Spaces and facilities designed to encourage the most efficient utilization of land
- Consideration of the needs, desires, and opinions of the intended users
- Coordination with public institutions and private entities to avoid duplication and encourage cooperation
- Inclusion of public services such as education, health and fitness, transportation, and leisure into park and recreation facilities
- Well planned and coordinated facilities that are adaptable to future needs and requirements
- Consideration of financial resources in all phases of planning, acquisition, development, operation, and maintenance of spaces and facilities
- Public participation included in all stages of the process
- Continuous opportunities for incremental evaluation and review
- Integration of other existing plans that affect the area into the final recommendations and ultimately in implementation of the plan
- Established procedures for acquiring land for future park and recreation areas and facilities

### **PARK CLASSIFICATIONS/TYPES AND DEVELOPMENT STANDARDS**

Parks and recreation facilities and programs are very important to the City's efforts to provide quality of life for its citizens and visitors. The following concepts and development standards will guide the City Council, Parks and Recreation Committee, citizens, and staff in the development and programs of parks and recreation, now and in the future.

A variety of sizes and types of parks and recreation facilities and activities are recommended to satisfy diverse and individual interests; ensure adequate and equal opportunity for access; and encourage use by all age and population groups. Generally, a park system will include both passive and active recreation facilities. Passive recreation does not require much in the way of facilities and may include playground equipment, walking paths, open space, and nature observation places. Active recreation requires more facilities such as ball fields, buildings, and areas for programmed recreation.

### **PARK SYSTEM PARK CLASSIFICATIONS**

A good park system will have combinations of park land and facilities including the following types.

#### **POCKET PARKS**

Pocket parks are small-scale open spaces that can provide a safe and inviting environment for the surrounding community. They should be designed to accommodate a limited variety of passive needs



and functions in a small open space. Locations can be in neighborhoods, apartment complexes, in or adjacent to public buildings, offices and shopping areas. The park improvements should meet the specific location and user needs, and complement, but not infringe on adjacent areas. Input from adjacent properties and potential users should be a primary consideration for developing and maintaining pocket parks. Facilities and improvements may include:

- Sidewalks or walking paths
- Security lighting, if appropriate
- Small open play area with limited playground equipment (optional)
- Park benches
- Trash receptacles
- Irrigation system (optional)
- Native and waterwise plants for low maintenance/trees
- Curb cuts and inclusive pedestrian access

**Purpose/Use:** Serves a concentrated or limited population within an immediate proximity. Examples are a tot lot in or near an apartment complex, or a vacant lot developed as a passive park with pervious sidewalks/walking paths and benches.

**Service area:** Immediate adjacent areas and neighborhood

**Desirable size:** .25 to .50 acre depending on site availability

**Acres/1,000 population:** No minimum or maximum standard

**Site characteristics:** Generally located within or close to residential neighborhoods or in appropriate commercial or public space. Maintenance should be provided by the neighborhood or adjacent property owners

### NEIGHBORHOOD PARKS

Neighborhood parks are usually centrally located in residential areas and should be easily accessed from surrounding neighborhoods. Sidewalks and trails should connect the residents to the park. The site should accommodate both active and passive recreation uses in an aesthetically pleasing environment. Neighborhood parks should provide inclusive facilities for all ages with a combination of equipment and facilities. Involving neighbors in the design and maintenance of the park can ensure that the park is compatible with the neighborhoods in surrounding areas. Recommended facilities and improvements may include:

- Open space
- Sidewalks, and walking paths both internal and external
- Park signs
- Park benches
- Picnic tables with shelters
- Native and waterwise landscaping/trees
- Irrigation system (optional)
- Drinking fountains
- Security lighting
- Playground equipment
- Trash receptacles
- Curb cuts and inclusive pedestrian access

**Purpose/Use:** For residents within walking distance. Active recreation and uses may include playground equipment, athletic courts, field , as well as passive use such as walking trails, benches and shade structures.

**Service area:** 0.25- to 0.5-mile radius to serve up to 5,000 persons

**Desirable size:** Minimum 5 acres, evenly distributed

Acres/1,000 population: 1.0 to 2.0 acre(s) in service area

Site characteristics: Evenly distributed across city with easy, safe access for nearby residents.

### **CITY/SCHOOL PARK**

The opportunity to partner with the school district to develop parks can add additional land and facilities to the park system. By using District owned property adjacent to an existing or proposed school, the mutual benefits are cost saving to the City for the land and equipment and maintenance savings to the District. The park can be used by the school during the school day and all other times by the citizens.

**Purpose/Use:** Similar to Neighborhood parks uses and equipment

**Service area:** Same as Neighborhood, dependent on any special uses

**Desirable size:** Variable, ideally 3.0 to 5.0 acres.

**Acres/1,000 population:** Variable, related to school attendance zone

Site characteristics: adjacent to elementary and middle schools

### **COMMUNITY PARK**

Inclusive facilities and improvements for community parks should be planned and designed for heavy use by persons of all ages, activity levels from all areas of the community. Community parks' physical characteristics should provide for active and passive recreation use with suitable soils and a variety of vegetation. Where feasible, it should be located adjacent to a trail or greenway that provides an off-street linkage from other areas of the community. Neighborhood and community input ensures that the park is appropriate for the community. Recommended facilities and improvements may include the following:

- Street and park directional signs
- Street signs, including "Children at play"
- Park benches
- Tennis courts
- Softball and little league fields
- Soccer field(s)
- Swimming pool
- Sidewalks and walking/jogging paths with exercise stations
- Picnic area(s) with tables, shelters, and grills
- Covered pavilion
- Native and waterwise landscaping/trees/nature areas
- Irrigation
- Restrooms
- Drinking fountains
- Security lighting
- Fencing for ball fields, athletic courts, and secured areas

- Playground equipment
- Pervious surface for general play area
- Trash receptacles
- Off-street parking
- Curb cuts and inclusive pedestrian access
- Field house
- Volleyball court
- Other unique features (as applicable)

**Purpose/Use:** Provide active and passive recreation and may include athletic fields and courts, swimming pools, picnic areas, walking/jogging paths, open play areas, playgrounds, and exercise stations

**Service area:** Primarily for residents within a 2-mile radius, but open to persons throughout the city

**Desirable size:** Minimum 10 to 50 acres, optimum 25 acres

**Acres/1,000 population:** 5.0 to 8.0 acres

**Site characteristics:** Located in areas that will provide city-wide access

### REGIONAL PARK

A regional park typically provides a variety of uses. Ideally it is an area that also preserves natural areas for nature-oriented outdoor recreation, such as viewing and studying nature, wildlife habitat, conservation, swimming, picnicking, hiking, fishing, boating, camping, and trail uses. Regional parks typically include active play, such as sports fields. Recommended facilities and improvements may include:

- Park signs
- Street and directional signs for park
- Park benches
- Tennis courts
- Softball and little league fields
- Soccer field(s)
- Swimming pool
- Sidewalks and walking/jogging paths with exercise stations
- Picnic area(s) with tables, shelters and grills
- Covered pavilions
- Waterwise landscaping and nature areas
- Irrigation
- Restrooms
- Drinking fountains
- Security lighting
- Fencing for ball fields, athletic courts and secured areas
- Playground equipment
- Hard surface for general play area preferably pervious
- Trash receptacles
- Off-street parking
- Curb cuts and inclusive pedestrian access

- Field house
- Volleyball court
- Other unique features (as applicable)

**Purpose/Use:** Serves a wider more regional population's parks and recreation needs with a broad range of facilities and activities. Typically, may include areas of natural resources.

**Service area:** 50-mile radius

**Desirable size:** 40 to 150 plus acres

**Acres/1,000 population:** 5.0 to 10.0 acres

**Site characteristics:** Planned and programed to accommodate large numbers of visitors, including regional special events such as sports tournaments, fairs, concerts, exhibitions, etc.

### **SPORTS COMPLEX**

A sports complex provides for athletic fields and associated facilities at one or more larger sites in the City. The facilities would be developed to meet the needs of the user groups and sports associations.

Complexes are developed for a variety of sports including:

- Baseball
- Softball (adult and youth, male and female)
- Soccer
- Tennis
- Basketball
- Football
- Volleyball
- Handball
- Racquetball
- Other

Additional sports complex facilities may include:

- Group picnic areas and shelters
- Bleachers
- Lighting
- Fencing

Support facilities should include:

- Restrooms
- Water fountains
- Multipurpose building
- Common open space
- Parking

Parking areas should be adequate to provide spaces for tournament activities. The location should be away from developed residential areas and direct access through these areas should be avoided. Trails can be included in the complex and linked to other recreational facilities.

Passive facilities may also be included to provide other activities in the park. The space needed for a sports complex should be a minimum of 40 acres with 150-300 acres being optimal. Consideration should be given to acquiring enough land and setting aside additional acreage for future expansion.

The population served by a sport complex would be the City as a whole. The ability to host tournaments will also provide additional tax revenues from visiting participants.

**Purpose/Use:** Consolidates heavily programmed athletic fields and associated facilities in larger and fewer sites strategically located in the community

**Service area:** Strategically located community-wide facilities.

**Desirable size:** Determined by demand. Usually a minimum of 25 acres, with 40 to 80 acres being optimal.

**Acres/1,000 population:** No minimum standard, serves whole community

**Site characteristics:** Typically developed and designed for programmed athletics

### SPECIAL PURPOSE PARKS

#### SKATEBOARD PARK

A Skateboard Park is a purpose-built recreational environment made for skateboarding, BMX, scooter, wheelchair, and inline skating

**Purpose/Use:** a specific space for specialized recreation activities in a space that is safe and away from public streets and sidewalks.

**Service area:** Citywide or in a community or neighborhood park

**Desirable size:** 1 acre with adequate design to include a range of ages

**Acres/1,000:** No minimum standard

**Site characteristics:** Fenced with ramps and other skateboard designs, posted with liability disclaimer

#### DOG PARK

Dog parks have become an important feature in park systems where owners can safely and legally take their dogs to exercise and socialize off-leash

**Purpose/Use:** A clearly defined location for exercising dogs legally in a designated space

**Service area:** Citywide or in a community or neighborhood park, if there is adequate space

**Desirable size:** 1 acre

**Acres/1,000:** No minimum standard

**Site characteristics:** Fenced area with waste disposal containers and available water

#### SPECIAL USE PARK

A park or facility may be for specialized or single-purpose recreation activities such as golf courses, zoos, nature preserves and conservatories. Another special use park is inclusive for special populations, particularly those who are mobility impaired.

### **DISC GOLF COURSE**

Disc golf (occasionally called Frisbee golf or frof) is a flying disc sport in which players throw a disc at a target; it is played using rules similar to golf and played on a course of 9 or 18 holes.

**Purpose:** a specific space for to play a game similar to golf using a disc (frisbee) in 9 or 18 hole format.

**Service area:** City wide

**Desirable size:** 1 to 2 acres per hole

**Site Characteristics:** usually built in more natural and less manicured environments than golf located and oriented as to not interfere with surrounding activities.

### **LINEAR PARK**

All parks do not have to be in neighborhoods or a specific size and shape. A linear park can be developed between parks, where an otherwise less developable land can provide recreational opportunities.

**Purpose/Use:** For bicycling, hiking, walking, and jogging and commonly used as a linkage between two or more park and recreation areas

**Service area:** Citywide

**Desirable size:** Sufficient to accommodate use and adequate travel distance, minimum 0.5 mile

**Acres/1,000 population:** No minimum standard

**Site characteristics:** Typically follows a linear natural feature, such as an abandoned rail line, river, stream, or existing rights-of-way or easements.

### **PEDESTRIAN AND BICYCLE AND TRAILS**

The development of trails to link parks and, ultimately, form an overall system, will provide for uninterrupted and safe pedestrian movement between parks and throughout the community. They provide outdoor recreational opportunities and experiences that reflect the requests interest of the citizens. The following are types of trails.

#### **PARK WALKING PATHS/SIDEWALKS**

A safe place to walk was identified as a very important park feature. Internal walking loops in all types of parks contribute to good community health. Along with a paved or other approved surface, exercise stations, benches, shade structures and water foundations should be provided.

#### **PARK TRAILS**

These trails are generally located in greenways, natural areas, and parks. They could also be in drainage ways, along irrigation canals, on levees, abandoned railroads, utility easements, and scenic routes. The purposes are to accommodate walkers, joggers, and bicyclists and to protect them from traffic. They allow movement within and between parks, activity centers, and natural resource areas with a minimum of interruptions, while emphasizing a strong connection with the natural environment. They should be a part of an overall park system.

Designs should follow Texas Department of Transportation (TxDOT), American Association of State Highway and Traffic Officials (AASHTO), and Americans with Disabilities Act (ADA) guidelines. These trails may also be used for bicycle commuting.

### CONNECTOR TRAILS

These trails are developed to provide connections between parks, cities, and major activity centers. They can be within or adjacent to the street right-of-way. They can provide separate paths for pedestrians, bicyclists, and skaters. Connector trails can be used for bicycle commuting purposes. Like the Park trails, they must be designed to meet the necessary design standards.

### BIKEWAYS

Bikeways are paved segments of roadways that can be used to separate bicyclists safely from traffic. There are generally two types of bikeways: bike routes that are paved segments separate from the traffic, and bike lanes that are a part of the roadways designated for the use of bikes. These can be used for commuting as well as links to recreational activities and facilities. All-terrain and mountain bike trails are included in this classification.

### CONNECTOR TRAILS

**Use:** Multiple purpose trails that emphasizes safe travel for pedestrians to and from parks and around the community

**Service area:** City-wide. Designed to connect major attractions.

**Desirable size:** Sufficient to provide adequate travel between parks, neighborhoods, and community facilities

**Acres/1,000 population:** No minimum standard

**Characteristics:** Type I: Separate/single purpose hard-surfaced trails for pedestrians, bicyclists, and in-line skaters located in exclusive right-of-way. Type II: Same as Type I but located within existing road right-of-way.

### ON-STREET BIKEWAYS

By designating lanes for safer bike riding is a part of the City's transportation network that encourages riders to use bikes rather than cars for both recreation and trips to work and shopping.

A designated (painted or separated) bike lane is where shared portions of paved roadway provides separation between motor vehicles and bicyclists,

**Use:** Paved segments of roadways that serve to safely separate bicyclists from vehicular traffic

**Service area:** Citywide

**Desirable size:** Sufficient to provide adequate travel between parks, neighborhoods, and community facilities

**Acres/1,000 population:** No minimum standard

**Characteristics:** Bike Route: Designated portions of roadway for the preferential use of bikes or exclusive use of bicyclists

The following chart **Table 5.1** uses National Parks and Recreation Association standards for specifications for facilities.

TABLE 5.1 SUGGESTED FACILITIES SPACE GUIDELINES 2019

Activity/Facility	Recommended Space Requirements	Recommended Size and Dimensions	Recommended Orientation	# of Units Per Population	Service Radius	Location Notes
Baseball 1. Official 2. Little League	3.0-3.85-acre minimum 1.2-acre minimum	Baselines—90' Pitching distance— 60 1/2' Foul lines—min. 320' Center field—400'+Baselines—60' Pitching distance—46' Foul lines—200' Center field—200'-250'	Locate home plate so pitcher throwing across sun and batter not facing it. Line from home plate through pitcher's mound run east north-east.	1 per 5000 Lighted—1 per 30, 000	1/4-1/2 mile	Part of neighborhood complex. Lighted fields part of community complex.
Softball	1.5-2.0 acres	Baselines—60' Pitching distance—46' min. 40'—women Fast pitch field radius form plate—225' between foul lines Slow pitch—275' (men) 250' (women)	Same as baseball	1 per 5,000 (if also used for youth baseball)	1/4-1/2 mile	Slight difference in dimensions for 16" slow pitch. May also be used for youth baseball.
Skateboard and Roller blade	To be determined in specific park					
Disc golf	To be determined in specific park					
Trails	N/A	Well delineated head maximum of 10' width, maximum average grade 5% not to exceed 15%. Capacity rural trails—40 hikers/day/mile Urban trails—90 hikers / day/mile	N/A	1 system per region	N/A	
Archery Range	Minimum 0.65 acres	300' length x minimum 10' between targets. Roped, clear areas on side of range minimum 30'; clear space behind targets minimum of 90' x 45' with bunker	Archer facing north (± 45°)	1 per 50,000	30 minutes travel time	Part of a regional/ metro park complex

TABLE 5.1 (CONTINUED) SUGGESTED FACILITIES SPACE GUIDELINES 2019

Activity/Facility	Recommended Space Requirements	Recommended Size and Dimensions	Recommended Orientation	# of Units Per Population	Service Radius	Location Notes
Basketball 1. Youth 2. High School 3. Collegiate	2400-3036 sq. ft. 5040-7280 sq. ft. 5600-7980 sq. ft.	46' - 50' x 84' 50' x 84' 50' x 84'	Long axis north-south	1 per 5000	1/4-1/2 mile	Same as badminton. Outdoor courts in neighborhood and community parks, plus active recreation areas in other park settings.
Soccer	1.7-2.1 acres	195 to 225' x 330' to 360' with a minimum clearance of 10' on all sides	Fall season—long axis northwest to southeast. For longer periods, north to south.	Number of fields depends on popularity. Currently should be same as baseball	Practice: 1-2 miles Tournament: 15-45 min.	
Tennis	Minimum of 7,200 sq. ft. single court. (2 acres for complex)	36' x 78'. 12' clearance on both sides; 21' clearance on both ends	Long axis north-south	1 court per 5000	1/4-1/2 mile	Best in tennis courts of 2-4. Located in neighbor-hood/ community park or adjacent to school site.
Volleyball	Minimum 4,000 sq. ft.	30' x 60'. Minimum 6' clearance on all sides.	Long axis north-south	1 court per 5000	1/4-1/2 mile	Same as other court activities (e.g. badminton, basketball, etc.)
Football	Minimum 1.5 acres.	160' x 360' with a minimum of 6' clearance on all sides	Fall season—long axis northwest to southeast. For longer periods, north to south.	1 per 20,000	15-30 minutes travel time.	Usually part of baseball, football, soccer complex in community park or adjacent to high school
Multiple Recreation Court (basketball, volleyball, tennis)	9,840 sq. ft.	120' x 80'	Long axis of courts with <i>primary</i> use is north-south	1 per 10,000	1-2 Miles	In neighborhood or community parks.
Open Space	Minimum of 5 acres undeveloped per park			5 acres per 1,000	30-minute travel time	Open Space
1/4 Mile Running Track	2 acres	Overall width—276' Length—600.02'. Track width for 8 - 4 lanes is 32'	Long axis in sector form north to south to northwest to southeast with finish line at northerly end	1 per 20,000	15-30 minutes travel time	Usually part of high school or in community park complex in combination with baseball, soccer, etc.

There are three basic approaches to use to assess the needs and desires as to how the parks, facilities and recreation programs can best serve the community now and in the future. These approaches, combined with the inventory of parks and facilities, helped establish the Goals and Actions of this new Parks Master Plan, as well as priorities for future development. The development distribution of the surveys relied on input and participation of the Parks and Recreation Advisory Committee and City staff from several departments.

For the City of Edinburg, the approaches considered are :

The **demand-based approach** relies on information gathered from participation rates, surveys, and other information, which indicate how much of the population wants certain types of facilities.

The **resource-based approach** examines the assets and resources of the area for open space, parks and recreation facilities, and defines how these resources can be utilized.

The **standards-based approach** uses established standard to determine park areas and facilities of park need of a given population.

### DEMAND-BASED APPROACH

A demand-based approach relies heavily on input from citizens and park users. Two survey formats were used: online (using Google forms) could be accessed through the City's website and a paper version was distributed at events and at the Parks and Recreation Department. The Parks and Recreation Advisory Board took an active role in developing and distributing the surveys. There were 455 responses to the online survey and 280 responses from the paper version. Although the two surveys differ slightly, the attendance, programs and age groups were aligned. Copies of both surveys and tabulations are in the Appendices.

#### ONLINE SURVEY

The following are the questions and summaries from the tabulations of the 455 **online** responses for survey conducted from mid-April to mid-May, 2019. The survey was prepared using Google forms and accessible from the City's website, the EWBC website, and Facebook.

##### **1. How often do you or your family members visit the following Edinburg parks and/or recreational facilities?**

Three parks out of the entire park system stood out as parks attended very frequently. These parks are: Municipal Park (30%), Edinburg Wellness Center (23%) and Edinburg Scenic Wetlands and World Birding Center (18%). Out of these three parks, Municipal Park appears to have the highest attendance (115 responses for "Very Frequently" attended).

In contrast, according to the online survey, 13 of the parks were listed as "Never Attended".

##### **2. If you rarely or never visit Edinburg parks and/or recreation facilities, please let us know the reason.**

For this question, 42% of respondents live in Edinburg, but indicated that the parks and facilities are too far from their home. 18% said they don't live in Edinburg. 2% have limited mobility or transportation, or access to the parks and/or facilities, and 38% do not have time.

In addition to the responses, seventy comments were received. The comments indicated that some people do not know about all of the parks or use the parks. Others said that it is too hot and there are not enough shade. Others indicated that they preferred other types of recreation than provided.



**3. Please select all the activity areas that you or your family members have used within the last 12 months while visiting an Edinburg park or recreation center**

The top three activities are: Walking, Hiking and Biking Trails (58%), Nature Trails (48%) and Playgrounds with Equipment (46%) followed by baseball/softball fields (29%). Other sport and all other responses were below 20%.

**4. What do you or your family members usually do at Edinburg parks or recreation facilities? (452 responses)**

The top activities that people participate in are: Walk/Jog/Run (57%), Spend time with Family (50%) and Play in Open Space/Play Areas (46%) followed by team sports (30%), Bird and Wildlife Watching (24%), and Photography (18%).

**5. What programs and/or activities do you or your family participate in while at an Edinburg park or recreation center? Check all that apply. (403 responses)**

In this survey the responses were quite varied, but the following programs/activities are the most popular: Environmental Education Programs and Family Programs (12%), Day Camps (summer) 11%

Track and Field and Other activities (9%).

Disc Golf, a suggestion, was mentioned on 19 responses while swimming had 7 responses and soccer had 4 responses.

**6. How do you or your family members get to Edinburg parks, trails or recreation facilities? 455 responses**

The top three modes of transportation to get to a park or park facility are: Drive (87%), Walk (19%) and Ride with others (10%). Jog, golf cart, and a horse were each mentioned once.

**7. Please check ALL the age groups that live in your household. (455 responses)**

There is a tie for the two largest age cohorts: Ages 6-12 and 35-44. Each cohort makes up 39% of the responses from the online survey. Ages 25-34 make up 36% of the responses, while Under 6 make up 33%. These numbers indicate that the primary users of the parks are family with children. Older adults use the parks less although their responses would suggest they use the walking trails and go to the Edinburg World Birding Center.

**8-A. Are more facilities needed for persons with disabilities, i.e., playground for all, zero depth entry pools, etc.? Yes, No, Maybe**

Based on the online survey responses: there were 51% Maybe, 37% Yes, and 13% No. The high number of Maybe responses could be attributed to not knowing what type of facilities would be considered.

**8-B. If you answered yes to the above question, what additional facilities would you like to see for persons with disabilities?**

In the 127 comments received, accessible parks and equipment were mentioned the most and included playgrounds, swings, trails, bleacher seating, parking, and designated parking spaces with enforcement.

Generally, there was great interest in inclusive sports, as well as indoor programming.

**9-A. Edinburg has a system of canals and drainage channels. Would you support the creation of a trail along these channels? Yes, No, Maybe**

Over 68% responded that they would like to support such a system. The No and Maybe responses could be linked to comments about safety and costs.

**9-B. If you answered no to the question above, please explain.**

Of the 64 comments received, most were generally supportive, but some questioned the mosquitos and safety.

**10. What other facilities, programs or activities would you like to see the City of Edinburg offer?**

302 comments/suggestions were received. There were requests for new facilities, disc golf and volleyball. Pools trails, and programs, some of which are already in place, were suggested. There were several thoughtful comments that complimented and very few that were critical of the Department.

**PAPER SURVEY**

Although most of the questions in the paper survey were identical, some were slightly different. Most of the paper surveys were filled out in person. That may account for less comments. The following are the questions and responses for this survey, a copy of which is in the Appendices.

**1. Please check ✓ below ALL the Edinburg Parks that you go to.**

As expected, the most popular park was Municipal Park since it has so many facilities and activities with 56% of the respondents listing it as one of the park they use. Bicentennial Park was next with 41% followed by Memorial Park at 28%. The next five parks were all in the 25% range, Freddy Gonzalez, Trevino, and Jaycee Parks. It should be noted that the respondents were asked to check all of the parks they go to.

**2. Which four of the parks, trails and recreation facilities from Question 1 do you and members of your household visit the MOST OFTEN? Write in your answers below using the numbers from the list in Question 1, or check "NONE."**

This question received very few replies since it may have been confusing to the respondents who were most likely filling the survey out while attending an event or ballgame

**3. From the following list, please check ✓ ALL the parks, trails, and recreation facilities operated by the City of Edinburg Parks and Recreation Department that you or members of your household have used or visited over the past 12 months**

The highest number of responses were for Playgrounds with Equipment (36%) which is not surprising since the age groups for the responders (Question 6 below) indicate young children and parents. Baseball/Softball fields at 32% and splash parks at 32%. The next most popular facilities were the Walking, Hiking, and Biking trails at 29%. Swimming Pools, Nature Trails, Picnic Areas/Shelters, and Indoor Basketball scored in the high teens.

**4. How do you usually get to the park/facility? Check ✓ all that apply.**

Most people drive to the park (64%), but the comments indicate that they wish parks were closer to them. The other means that received responses were Walk (18%) and Bike (15%).

**5. What do you usually do at the park/facility?**

Slightly more than half (54%) of the respondents said they walked, run, or jogged at the parks. This could be because most all of the parks have a walking trail, path, or sidewalk.

**6. What programs and activities do you or your family participate in at a park or recreation center? Check ✓ all that apply.**

The majority of the responses were for sports programs with Baseball/Little League at 34%. Football/Volleyball, Basketball were next at 24% followed by Softball at 22%. All of the other listed programs were less than 10%, except for Boxing at 11%.

### **7. Please check ALL the age groups that apply to you and your family.**

The largest group was 6-12 at 43% and under 6 at 31%. The next group were the 13-17 and 35-44 ages. The 35-44 cohort is probably mostly the parents of the other groups. The Rio Grande Valley is an area with large families which are often sports team oriented, however, walking and nature programs are important as well.

### **8. Edinburg has a system of drainage channels. Would you support the creation of a trail network along these channels?**

Not all of the survey participants answered this question. Those who did (112 or 40% of the total) responded positively. Only 17 said No and 38 said Maybe. There was some concern about safety in the comments.

### **9. Are more facilities needed for persons with disabilities, i.e. playground for all, zero depth entry pools, etc.?**

As with Question 8 above, not as many responded to this question although the favorable response was at 39% with many favorable comments and facility requests.

## **SURVEY SUMMARY**

Although the questions were worded slightly differently, the results of the two surveys yield similar results. The difference may be in how and where the surveys were advertised, accessed, distributed and returned. The online survey with its 455 responses and 302 comments/suggestions probably came from a wider range of respondents those who receive information from the City on a regular basis. Also, the survey was created using Google forms and was interesting to respond to. The paper surveys were distributed at registration for sports and recreation programs and at ballgames, but not many comments were received in that the respondents were often at sports activities.

It may be concluded that the respondents participated in the programs and use the parks in Edinburg. The comments indicate that new parks are needed in outlying areas—that they would go to parks if they were closer to their homes. There is receptivity to new parks for persons with disabilities and for using the drainage channels for connectivity between parks, neighborhoods and activity centers as well as connections using park trails and sidewalks.

Walking, Hiking and Biking Trails received over 259 responses in what people actually do and what they want, more places to walk. The *2017 Bicycle and Pedestrian Master Plan* can provide the guidance for addressing those interest and improving park connectivity. It may be feasible to work with the Hidalgo County Drainage District to allow trails along the channels when access and safety concerns can be met and agreed on.

One of the biggest number of response were the comments for Question 8.A of the online survey and Question 9. on the paper survey about inclusive parks. The responses were generally very positive. Over 80 comments were received that listed the need for inclusive parks to serve those who may have special needs or physical mobility restrictions. They responders listed the desire for a park equipment designed for easy access especially from wheelchairs. They were clear wanting trees, plants, and sidewalks.

Disc golf was suggested over 70 times as a new amenity for parks. Playgrounds and splashpads were identified as important in all the parks with over specific 25 suggestions. Splashpads and pool improvement received over 20 suggestions.

## RESOURCE-BASED APPROACH

Edinburg has, and will continue to have, resources for funding new parks and improving existing parks. The City's resources for current and future parks include:

In partnership with the Edinburg Consolidated Independent School District (ECISD), Norma Linda Trevino City/School Park and Escandon City School Park were built. The school district owns the land and the City provides the equipment and maintenance. There are opportunities to do this with other school sites.

There is vacant land in the more underserved areas of the City that may be available for new parks. Without designating particular tracts, there is the potential for new parks in the northern and southern areas of the City.

Areas along the irrigation canals have been discussed as ways to link the parks to each other and to activity centers with trails and sidewalks.

Naming rights and philanthropic donations have the potential to add additional parkland and funding. Looney Park honors a family member and Janet Vacker Park is named in honor of an involved citizen.

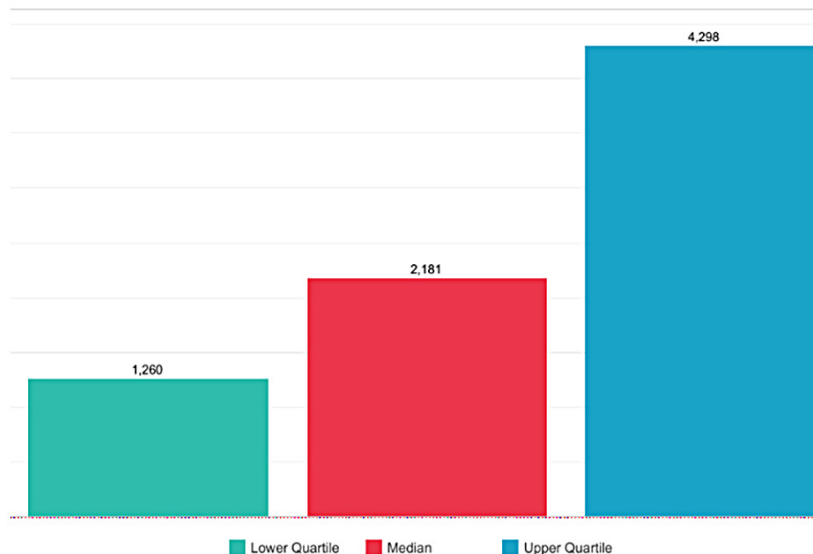
With the increase in population and thus new residential units, the park dedication funds required with platting may provide land or money in lieu of land for park development and improvement.

Grants from a variety of sources have and should continue to provide new features in parks and specialized programs.

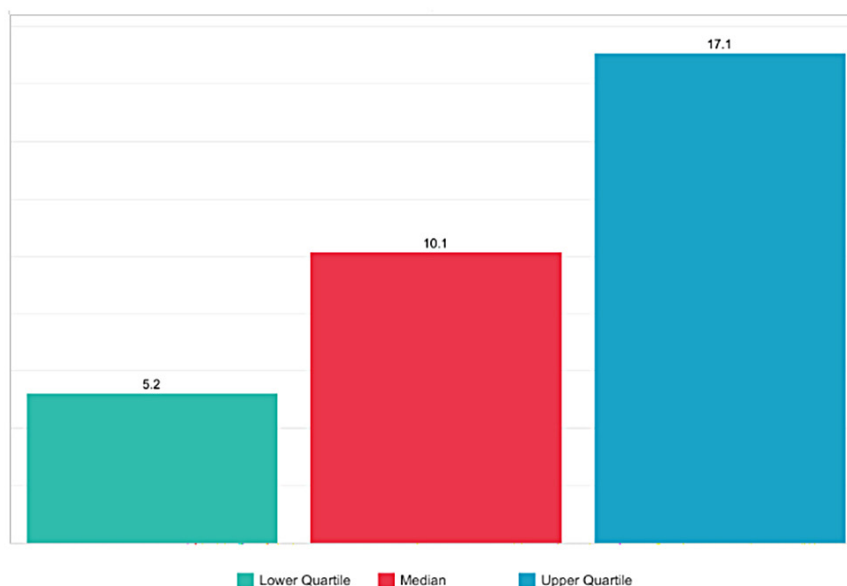
## STANDARDS- BASED APPROACH

The standards-based approach was not heavily relied on since the City and adjacent or nearby cities do not meet the lower quartiles in the graphs below. Although the available information came from the respected National Recreation and Recreation Association's Park Metrics, it is the compilation of information volunteered by cities across the United States and not applicable to the Rio Grande Valley.

Typically ,there is one park for every 2,181 residents



Typically, there are 10.1 acres of parkland per 1,000 residents in the United States



Compared with the other cities in the central part of the lower Rio Grande Valley, it should be noted that Edinburg is actually providing more parkland acres per 1,000 population than the other cities.

**TABLE 6.1 PARKS AND ACREAGE IN AREA CITIES**

CITY	POPULATION ESTIMATES	NUMBER OF PARK FACILITIES	APPROXIMATE ACRES OF PARK LAND	ACRES PER 1,000 POPULATION	NATIONAL MEDIAN ACRES PER 1,000
Edinburg	86,123	18	324.19	3.76	4.53-9.19
Pharr	79,487	13	120.00	1.51	4.53-9.19
McAllen	142,212	25	267.90	1.881	3.94-7.65
San Juan	33,856	16	72.30	2.14	5.23-9.67
Alamo	18,353	6	38.00	2.07	4.53-10.59
Mission	83,563	23	206.90	2.48	4.53-9.19

### NEED FOR NEW PARKS

The City fully supports the expansion to add parks in underserved areas as expressed in the Goals and Actions and in the prioritization of projects in the Implementation section. **Map 6.1 - Future Proposed Parks** shows general, not site specific, areas where new parks may occur when feasible. Land currently under cultivation or just vacant may become available as new residential developments occur in the outlying areas.

Edinburg is growing and will need to provide more and more parks and programs. It has been and is continuing to be very successful in addressing what its residents want in a wide variety of activities and facilities. In using the goals and actions developed in this Plan, the Parks and Recreation Department is well positioned to continue to have an excellent park system, which is inclusive for all residents in a happy and healthy city.



Establishing the priorities for improvements is the basis for implementing a parks and recreation master plan. The needs and desires must be realistically balanced with the fiscal ability in order to make this Plan work. An implementation program is a framework for using the goals and actions to guide the City in providing quality parks and recreation areas, facilities, and improvements.

The priority improvements that are to be completed, underway, or initiated in increments over the 10-year life span are identified below. These improvement priorities are based on the information developed and provided in the chapters of Goals and Action, Needs Assessment and Identification, and Park Standards. The identified improvements are divided into time increments. They include development of existing and future parks and facilities, purchase of additional equipment, construction of pavilions, long term facility improvements and installations, as well as the purchase and acquisition of available and appropriate park lands when possible.

Beginning with identifying existing parks, priorities for locations for new neighborhood and pocket parks, and looking at potential linkages, the program must consider what the desired improvements, expansions, and new facilities are. The goals and actions of this master plan for future development of the City's parks and recreation system are based upon existing conditions, planned improvements, and projected future needs as described in both the Inventory and Needs Assessment sections. The identified recreation facilities and park improvements were developed by staff in concert with the consultant. They were endorsed by the Parks and Recreation Advisory Committee following several mechanisms for citizens of involvement. Inherent in the adoption of this Plan, is the commitment of officials and citizens to attaining a desired public parks and recreation system.

### **PRIORITIZATION OF PROJECTS**

Based on the goals and actions that have evolved through the research, standards development, and public input in the Plan, the priorities are listed below in ranked order. The funding for the projects may be a combination of current fund expenditures, bond funds, reserve funds, tax revenues, grants, donations, in-kind services, and volunteer participation.

The following projects were identified as priorities over the next 10 years. They are planned for certain timeframes, but may be moved up or delayed based on funding and interest.

#### **2019-2020**

- Add inclusive playscapes in eight targeted parks
- Add trees, waterwise native plants, and shade structures
- Develop fitness areas in parks, such as a challenge course, for increased outdoor fitness opportunities
- Initiate beautification projects
- Continue Jackson Trail to connect to McAllen trails
- Re-stock ponds
- Implement the *2017 Bicycle and Pedestrian Master Plan* to expand connectivity between parks and activity centers
- Develop a Hike and Bike Trail on the east side along Raul Longoria
- Consider purchase of buses to facilitate transportation for programs, field trips, and events
- Develop/build North Park on City-owned land
- Complete the development three gyms and playscapes
- Leverage land/funds from park dedication requirements for new and redeveloped facilities



- Continue to provide a variety of outstanding recreation programs
- Complete the develop three gyms and playscapes
- Add more adult/senior activities such as Tai Chi, Zumba, Arts and Crafts, etc.
- Launch Kayak Program at the EWBC
- Provide a wider variety of sport and fitness activities
- Initiate new teen programs
- Add wellness and nutrition programs for all ages
- Expand aquatic activities
- Establish a Friends of the EWBC Board
- Work with the community, local schools and city departments to establish native habitat for birds and butterflies throughout the Edinburg Area, through initiatives like the Mayor's Monarch Pledge and Living Classrooms

### **2021-2026**

- Develop off-road non-competitive bike facilities
- Connect Palm Drive Bike Trail to Ebony Hills Golf Course, South Middle School, UTRGV, and the 107 Bike Trail
- Develop areas for leisure time and passive activities
- Install smaller open pavilions (party areas)
- Acquire land and develop new parks/facilities where needed, particularly a community center on the northern side of the City
- Add more walking trails, especially in northwest Edinburg
- Re-stock ponds
- Expand wellness and nutrition programs for all ages
- Leverage land/funds from park dedication requirements for new and redeveloped facilities
- Launch Kayak Program at the EWBC
- Create a yearly fundraising campaign through the Friends Board tie in with Fairy Fest?)
- Develop a Master Plan for the long range development and management for the Edinburg World Birding Center
- Explore the development of a satellite environmental education program and activities at Ebony Golf Course
- Explore the purchase of land surrounding the Birding Center for future expansion
- Develop specialty facilities such as a Planetarium, a regional Zoo and other destination attractions
- Improve walking trail to Bicentennial Park and future splash pad
- Partner with ECISD to build a Natatorium

### **2027-2029 and beyond**

- Develop new sports complex on Davis Road
- Acquire land and develop new parks/facilities where needed, particularly a community center on the northern side of the City.
- Leverage land/funds from park dedication requirements for new and redeveloped facilities
- Acquire land and develop new parks/facilities where needed
- Implement a large scale wetland restoration project and establish new shoreline and islands within the two large effluent ponds to improve wetland habitat and water quality
- Continue to improve and expand the features of the Edinburg Scenic Wetlands and World Birding Center

While these priorities may seem ambitious, the Parks and Recreation Department is dedicated to using them to guide and provide the delivery of exemplary park facilities and programs for the next ten years and more. Over the past three years, the Department has been successful in improving the operation and maintenance of parks and expanding all aspects of the recreational programming.

To continue the improvements in the parks and programs, the City has a new “to do” list that will move the City of Edinburg forward in providing a healthy, happy place to live and play.

### **TOP PRIORITIES FOR PARK DEVELOPMENT**

Based on the park inventory, needs assessments, survey comments, and additional public input at the Community Meeting, the following are the top 10 features that are desired in parks in Edinburg.

1. Inclusive and accessible play structures
2. Walking trails
3. Picnic/shade shelters
4. Skate park
5. Splashpads
6. Outdoor fitness program/equipment
7. Trees and native plants
8. Canopies for playscapes
9. Open space
10. Lighting

### **IMPLEMENTATION STRATEGIES**

Planning beyond the first 10 years is long range. New priorities may be added, or reordering of existing projects may be desirable, as the population grows and ages. Review and updates to the plan should be considered when necessary. Maintenance of the facilities is generally considered in the department’s yearly budget.

Perhaps the most important aspect of an implementation program is the commitment required from elected and appointed officials, City staff, and citizens. The Comprehensive Parks Master Plan Update must reflect the needs and desires of these individuals for it to be considered a useful tool in directing future decision-making pertaining to the acquisition, development, and management of an adequate parks and recreation system.

In order to ensure appropriate implementation of this 2019 Parks and Recreation Master Plan, City departments responsible for implementing portions of the plan should incorporate the recommended implementation actions in their annual departmental work programs. The Director of the Parks and Recreation Department should provide a progress briefing to the City Commission on an annual basis to allow monitoring of the steps taken toward implementation and the impact of the improvements.

As a valuable resource, this Plan should be used on a continuous basis in guiding the City’s park development program. The goals, objectives, and recommended actions of the plan should be referenced in other studies and development proposals to ensure consideration of existing and planned public parks and recreation areas and open space. As new development occurs, there should be allowances for enough land capable of being developed for public parks and recreation uses.

It is important that the Parks and Recreation Master Plan be periodically reviewed to ensure that the goals, objectives, and recommended actions reflect the changing community needs and attitudes. In and of itself, the master plan can accomplish very little. Rather, the citizens and City officials of Edinburg must

take ownership of the plan to see it is successfully implemented. Great care should be taken to ensure that the actions recommended by this plan are viable and realistic, in that they must relate to the City's adopted and approved plans, policies, and programs.

It should be noted that the implementation of the priorities of this plan will require a substantial investment by the City of Edinburg when it approaches a population of 100,000 (and greater) persons. Acquisition and development of the parks identified in this Plan will require a significant level of expenditure. In addition, upon completion of the park improvements, there must be a commitment of the City to continue to fund ongoing maintenance out of the City's capital budget.

### **POTENTIAL FUNDING MECHANISMS**

Parks and recreation facilities as capital improvements usually involve the outlay of substantial funds. Often local governments must pay for new facilities through appropriations in the annual operating budget. There are numerous techniques available to local governments to pay for capital improvements over a longer period of time. Some of the most readily available techniques may include those already in use:

**Park Dedication** - As part of the subdivision process, the City may require an equitable and reasonable amount of land to be dedicated to the City for park and recreational use. In order to abide by legal validity tests and to avoid a "taking" of private property, the amount of property to be dedicated must be roughly proportional to the demand for park and recreational services placed on the City by a private development. This method has worked effectively in some municipalities.

**Fee In Lieu of Dedication or Improvement** - The use of impact fees may be used by the City to collect revenue for the acquisition and development of park and recreational areas. Similar to the dedication approach, the required fees must also be roughly proportional to the City's burden for the provision of park and recreational services resulting from private development. An example of a "fee in lieu of improvement" is a park excise tax that would require a developer to pay a fee on a per square foot or per dwelling unit cost basis when a building permit is required and issued.

**User Fees** - User fees may be an effective cost recovery technique to recover a reasonable portion of the costs to administer, operate, and maintain public parks and open space. Examples of user fees include registration or entry fees for recreational programs, and equipment and facility rental charges.

**Partnerships with Other Governmental Entities** – The City may partner with the county, school districts, and even other cities in developing parks and recreation facilities.

**In-kind Services and Volunteer Participation** – In-kind services may be coordinated with other departments and government entities to perform the labor on specific construction projects. Individuals, sports associations, private businesses, and civic groups are just a few examples of entities and organizations that may furnish volunteer participation.

**Programs by the Texas A&M Forest Service** – This service provides numerous programs which may be used to enhance parks and recreation areas.

**Current Revenue** – This technique is known as "pay-as-you-go" financing and is the financing of improvements from current revenues such as general taxation, fees, service charges, special established funds, or special assessments.

**Reserve Funds** – The use of reserve funds is made possible by accumulating funds in advance for capital acquisition or development. The accumulation may result from surplus or earmarked operational revenues, funds in depreciation reserves, or the sale of capital assets.

**Enterprise and Revenue Funds** – Municipalities may establish accounts that are earmarked for park and recreation programs. These accounts are used to acquire, operate, and maintain facilities as well as fund programs.

**General Obligation Bonds** – The use of this method involves the taxing power of the jurisdiction as it is pledged to pay the interest and principal to retire the debt. General obligation bonds can be sold to finance permanent types of improvements, such as park and recreational areas and facilities. Voter approval may be required.

**Texas Recreation and Parks Account Program Funds** – The Texas Recreation and Parks Account (TRPA) provides 50 percent matching grant assistance to local governments for the acquisition and development of public parks and recreation areas and facilities. All TRPA grant applications are evaluated for program eligibility based on a “Project Priority Scoring System.” The applications are scored and presented to the Parks and Wildlife Commission for approval. Minimum master plan standards must be met to qualify for priority points in the competitive scoring system. A project awarded a grant must be complete before another grant application is submitted.

The TPWD offers four primary grant programs:

- Outdoor Recreational Grants are reimbursable matching grants up to \$500,000 for park acquisition, development, or redevelopment.
- Indoor Recreational Facility Grants provide matching funds for qualified recreation centers and other types of indoor facilities up to \$750,000.
- Texas Trails Grants provide funds for off street connections between activity centers, such as connecting parks to other parks or between schools and other qualified centers.
- New programs for special projects with matching grants planned in the near future.

The City may apply for and receive a grant in each of the above categories. These grants may run concurrently with each other.

**Land Donation** – Property owners may be willing to donate land to the City for use as a public park. The City should encourage donation subject to established guidelines for the development of park and recreational areas. Considerations should include the suitability of the land for park development, conformance with the objectives of the City Parks and Recreation Facilities and Programs Master Plan, and proximity to neighborhoods, natural features, and adjacent land uses.

Additional programs that may be available to the City include:

**Lease-Purchase** – Local governments utilizing this innovative financing approach prepare standards and specifications for the development of a park by a private company. The facility is then leased to the jurisdiction for a specified period of time. Title to the park and facilities can be conveyed to the local government at the end of the lease period without future payments. The rental over the years will have paid the total original cost plus interest.

**Eminent Domain** – The power of eminent domain allows the local government to acquire private property for public use. Although this is not a common practice for the acquisition and development of park and recreational areas, it is a tool that can be used by the City to purchase property within certain areas of the City, particularly within established neighborhoods. The property would be acquired through condemnation with “just compensation” paid to the property owner.

**Authorities and Special Districts** – Special authorities or districts may be created to provide public facilities such as parks and recreational areas. These authorities are commonly created to avoid

the restrictive debt limitations of local governments. They may be financed through revenue bonds retired by user charges or fees, or in some instances, the authority may have the power to tax.

**Sales Tax** – Through a public referendum, the city may establish a sales tax of any size, typically one-half to one cent, to generate general revenue for the acquisition and development of parks and recreation areas throughout the City. The sales tax may have a limited duration or may be permanent.

**State and Federal Assistance** – State and federal grants-in-aid are available to finance a large number of programs. The cost of funding parks may be borne completely by grant funds, or a typical requirement is a local share. Programs such as federal revenue sharing and Community Development Block Grants (CDBG) have given local governments more freedom on how they spend their grant money. Some of the programs currently available include:

**Community Development Block Grant (CDBG)** – The use of CDBG funds may be used on projects which benefit persons with low and moderate incomes. The CDBG program is administered by the Texas Department of Housing and Community Affairs. Funding is available on an 80/20 cost share basis.

**Federal Land and Water Conservation Fund/Texas Local Parks, Recreation, and Open Space Fund** – This fund is co-administered by the National Park Service and the Texas Parks and Wildlife Department (TP&WD). Funds are available to provide planning, land acquisition, and development assistance for “outdoor recreation.” This is a 50-50 matching grant program administered through the state.

**Urban Parks and Recreation Recovery Program (UPRRP)** – This grant program is for the rehabilitation of recreation facilities in areas defined by the U.S. Census as a Metropolitan Statistical Area (MSA). The City may qualify under this designation. This program is a 70 percent federal and 30 percent local matching grant.

**Rivers, Trails and Conservation Assistance Program (RTCA)** – This program is available for planning assistance and technical assistance on projects emphasizing environmental protection, open space accessibility, and construction. This program is available to qualified private organizations and local governments. Public involvement is a requirement of this program.

**Federal Lands Highway Funds** – This program provides funds for bicycle and pedestrian transportation facilities in conjunction with trails, roads, highways, and parkways. The primary intent of this program is to assist in the construction of transportation facilities. This is a 100 percent federal share program. The use of this fund would primarily be for the acquisition of right-of-way and development of trail linkages connecting residential neighborhoods with the public parks system.

**The Landscape Cost Sharing Program** – This program is administered by the State Department of Highways and Public Transportation. Through this program, there is 50 percent cost sharing available for both highway and pedestrian landscape projects on routes within the designated permanent state highway system.

**Cooperative Forestry Assistance Funds** – This program is administered by the Texas Department of Forestry. Matching grants are available on a 50 percent cost share basis for projects including trails and greenways, beautification efforts, and public education and training. Grants range in size from \$5,000.00 to \$10,000.00 and may be matched with in-kind services or private financing.

**American Greenways DuPont Awards Program** – This program is administered by The Conservation Fund, which provides grants of \$500 to \$2,500 to local greenways projects. Grants can be used for almost any activity that serves as a catalyst for local greenways planning, design, or development.

Most of the grant programs are reviewed and selected on a competitive basis, therefore applications for funding will be evaluated based on the assessment of local need, the existence of an adopted Parks, Recreation, and Open Space Master Plan, and the availability of local matching funds. Although grants provide an alternative means of financing local park and recreational area improvements, they should not serve as the sole basis for funding of a local park and recreation system.

### **PRIVATE FINANCING ALTERNATIVES**

In addition to capital improvement financing and state and federal assistance, there are a variety of innovative approaches to financing public park and recreation areas. The use of incentives to encourage private financing, public-private partnerships, land dedication or donation can be an effective strategy to develop a City-wide park and recreation system without relying on the municipality to fully fund the program. In addition, the use of impact fees may help to offset the impacts of private development on the demand for and use of public facilities and services. The following private funding approaches may be available to the City.

**Trust Fund** – The City could establish a trust fund for citizens to will a portion or all of their estate to public park and recreational use. Legal provisions would need to be established for the conveyance of property. In addition, the City should establish and use guidelines for the acceptance of suitable park land property. The Trust Fund would be incorporated as a 501(c)(3) non-profit organization. This would allow possible income tax benefits for the donors.

**Private Financing** – Community organizations or local service clubs could assist in acquiring and developing park and recreational areas by providing the local match for state or federal grants-in-aid. Another option is 100 percent financing by a private entity with dedication to the City.

**Tax Deferral** – This method may be used by the City to encourage property owners to defer the development of their land while the City uses it for public open space or a semi-developed park. During the deferral period, the property would be assessed as an undeveloped parcel, with the collection of taxes to be deferred until the property is developed. The City would secure an agreement with the property owner, with established conditions of use and provisions for liability and ongoing maintenance. In addition, the City would obtain a recreation easement for “temporary” use of the property.

**Tax Reductions** – Donation of private land for public use may reduce an individual’s federal income tax burden. Also, the market value of a recreation easement may reduce the tax burden either federally or locally, if approved by the local government.

The future success of the parks and recreation system will depend largely on the City’s dedication to implementing this Plan through its actions in promoting and adequately funding a very important part of the overall infrastructure of Edinburg.

Operations and maintenance are a very important part of the daily operations of a parks and recreation system as well as a parks master plan. This section includes standards for operation and maintenance of the improvements, basic equipment criteria and recommended level of staffing that is necessary to implement the priorities and activities set forth in this Plan. The following are recommendations for these areas.

### **PARK EQUIPMENT CRITERIA**

Through careful design and selection of materials, attractive park facilities can be developed and maintained that require minimum staff attention. Standardized criteria facilitate maintenance and repairs, maximize durability and longevity, and establish a minimum quality level.

All park facilities and improvements should be in accordance with the Americans with Disabilities Act (ADA), local building codes, and all applicable restrictions and requirements. The following standards are presented as guidelines for park facilities and improvements:

**Roads and Parking Lots:** All roads and parking lots should be concrete or asphalt, concrete preferred. Parking lots should be striped to delineate parking spaces, including appropriate handicap space designations.

**Gates and Fences:** Parks may be fenced and/or gated to control access. Fences and gates should be specifically designed for each park.

**Park Buildings and Structures (picnic pavilions, restrooms, offices, maintenance buildings):** Buildings should be constructed of metal, wood, brick, or concrete block, with metal or other appropriate roofs. Exterior painted finishes should be avoided. Structures should be designed to discourage birds from roosting, for example, no exposed rafters.

**Playground Equipment:** Equipment should meet Consumer Product Safety Commission (CPSC) Guidelines and American Society for Testing Materials Standards (ASTM). Play equipment should be galvanized or galvanized and powder coated metal, plastics or plastisol-coated expanded metal, or punched steel. No wood play equipment should be used unless it meets the requirements and would serve as an enhancement to the site.

**Playground Fall Surfaces:** All play equipment should have a resilient fall surface in accordance with CPSC Guidelines and ASTM Standards. Acceptable materials are poured rubber, rubber tiles, sand, gravel, and wood chips. No bark should be used. In play zones where the entire fall surface is not accessible in accordance with ADA requirements, the play structure should be made accessible in part through use of rubber fall surfacing within the loose fall surface material.

**Picnic Tables:** All picnic tables and connected benches should be plastisol-coated expanded metal, wood, aluminum, or concrete. All picnic tables should be located on concrete pads or within pavilions. Handicap accessible picnic tables should be provided at all facilities.

**Benches:** All benches should be plastisol-coated expanded metal, concrete, or galvanized metal legs with treated wood slats. All wood benches should be the same in order to facilitate replacement of damaged slats.

**Trash Receptacles:** All trash receptacles should be painted, or powder-coated metal drums mounted on two treated wood posts, or concrete containers. A concrete pad beneath the receptacle will facilitate mowing and edging.

**Grills:** All grills should be galvanized metal, permanently mounted with concrete footings. Grills should not be placed near play equipment.

**Bleachers:** All bleachers should be aluminum.

**Sports Facilities:** Sports facilities should meet standards for intended league play. All goals should be adequately anchored in place to prevent falling when climbed on or pushed.

**Sidewalks:** All sidewalks should be concrete or asphalt, with concrete preferred.

**Walking/Jogging Trails:** All walking or jogging trails should be fly ash or decomposed granite. Accessible trails should be a minimum of 6 feet wide, optimally 8 to 10 feet wide.

**Biking Trails:** Undeveloped trail surface should be of natural materials.

### **PARK MAINTENANCE STANDARDS**

For the parks to be perceived as an asset to the City of Edinburg, they must be well maintained at all times. At meetings and in survey responses, citizens pointed out that they would like to continue to see clean and attractive parks.

*Park Maintenance Standards*, a publication of the National Park and Recreation Association, contains a Maintenance Standard Classification System, which outlines six general levels of maintenance:

Mode I: State of the Art Maintenance—State of the art maintenance applied to a high quality, diverse landscape. This level is usually associated with high-traffic urban areas such as public squares, malls, governmental grounds, or high-visitation parks.

Mode II: High-Level Maintenance—Maintenance associated with well-developed park areas with reasonably high visitation.

Mode III: Moderate-Level Maintenance—Maintenance associated with moderate to low levels of development, moderate to low levels of visitation, or with agencies because of budget restrictions, that cannot afford a higher level of maintenance.

Mode IV: Moderately Low-Level Maintenance—Maintenance usually associated with low level of development, low visitation, undeveloped areas or remote parks.

Mode V: High-Visitation Natural Areas—Maintenance usually associated with large urban or regional parks. Size and user frequency may dictate maintenance staff. Road, pathway, or trail systems are relatively well developed. Included are other facilities at strategic locations, such as entries, trail heads, building complexes, and parking lots.

Mode VI: Minimum-Level Maintenance—Maintenance associated with low-visitation natural area or large, undeveloped urban parks.

The standards for these categories generally outline maintenance tasks and frequencies. Parks may have different levels of maintenance within them. Sports fields might be Mode II while natural areas might be Mode V. As individual parks within the system are programmed and developed, the classification plan should be used to budget maintenance costs for each park. Estimated man-hours per task and labor rates are included in *Park Maintenance Standards*. Another resource document is the *Public Works Handbook*.

## **MAINTENANCE TASKS**

The following tasks have been identified through review of the Park Maintenance Standards. They represent common maintenance tasks that must be accomplished routinely.

**Mowing:** In Texas, most turf areas must be mowed year-round, although the frequency and demand changes seasonally. Mowing is typically done in cycles with the mowers beginning in one area and mowing continually, cycling back to the same area at a regular interval. Park Maintenance Standards suggests different mowing intervals for different levels of maintenance.

**Weeding/Edging:** This task typically follows the same cycle as mowing and is accomplished by the same crew.

**Fertilizing:** Fertilizing is typically done only at community centers or special memorial areas. In many municipalities, leagues using sports facilities are responsible for fertilizing the fields they use.

**Watering:** Typically, only special memorial areas are irrigated in city parks. They are watered as required by the nature of the plantings. Hose bibs are located at sports fields. Leagues using the fields may be responsible for watering and turf care, with oversight by the Parks and Recreation Department.

**Trash Collection:** Daily trash collection from barrels and litter pick-up of heavily used areas.

**Restrooms:** Permanent restrooms are cleaned daily, and hand towels and toilet paper are replenished. Port-a-cans rented for overflow crowds at special events, or to replace closed restrooms, are serviced by the leasing company twice weekly or more often, if necessary.

**Picnic Pavilions:** Park staff schedules reservations for the facilities and makes sure they are clean before guests arrive. In addition, pavilions must be cleaned daily and inspected for damage, vandalism, burned out lights, and associated maintenance requirements. Grills must be cleaned and replaced as necessary, particularly following weekends and holidays.

**Lights:** Police or park rangers patrolling the parks after dark should note any broken or burned out lights. The Parks and Recreation Department should replace light bulbs or have appropriate city electricians do so with bucket trucks.

**Jogging Trails:** Asphalt trails must be re-topped every 4 or 5 years. Fly ash or decomposed granite trails must be re-topped every 2-4 years depending on usage.

**Tree Work:** Trees in developed areas must be pruned to maintain their health, to improve their appearance, and to allow views into parks from surrounding streets for security. Particularly dense trees located near security lights should be Class I pruned to allow light to penetrate the canopies. Dead, damaged, or diseased trees in developed areas and along trails in natural areas may need to be removed. Dead trees pose a hazard to visitors in that they may fall in high winds. Municipalities often contract with tree specialists for pruning and removal. The departments generally do their own cutting and chipping, using the resulting mulch in the parks.

**General Repairs:** Painting and minor carpentry, etc. can be performed by park personnel on an as needed basis. Plumbing and electrical work can be done by qualified park personnel or by other city employees. Graffiti-resistant surface treatments should be considered for building surfaces and facilities.

**Wildlife Management:** Animals in natural areas can be fed to maintain their populations.

**Insect Control:** Park personnel should be alert for fire ants and other hazardous insects as they perform their routine duties. Trained park personnel should eliminate hazardous insects as soon as they are discovered.

**Sports Facilities:** In many cities, sports facilities are developed for and then leased to organized leagues. The City may develop a “Concessionaire Agreement” for that purpose. It may state that leagues are responsible for fertilizing, watering, mowing, and litter pick-up, with the City paying water and electricity bills and emptying trash receptacles daily. The park superintendent should inspect all sports facilities every 30 days. It is particularly important to inspect the bleachers to make sure that they are structurally sound.

**Tennis Courts:** Tennis courts must be cleaned daily with a leaf blower as needed.

**Offices and Community Centers:** All buildings must be cleaned daily and inspected for any damage. Convention and community centers require personnel to make reservations and be present during open hours.

### PERSONNEL

Although the titles vary from city to city, the positions required to run a city park system efficiently are fairly well defined. The positions described below indicate personnel that would be desirable in Edinburg now and as the City continues to grow.

**Parks and Recreation Department Director:** The Director manages the entire park system, hires program and maintenance staff, oversees daily operations and maintenance, develops new park facilities, and reports to the City Commissioners.

**Assistant Director:** Assists the Parks Director in managing parks, contracts, consultants and developing park maintenance budgets, also seeks out grant opportunities, writes and submits grants for park development.

**Secretarial and Administrative:** Responsibilities include correspondence, reception, filing, program registration, reservations, and other such clerical duties.

**Parks Supervisor:** Responsibilities include directing the operation of city parks, including managing maintenance staff, leasing and inspecting sports facilities, and taking reservations for picnic pavilions.

**Parks Foreman:** Supervises and performs maintenance and upkeep tasks in parks.

**Buildings Supervisor:** Responsibilities include the repair and maintenance of facilities and equipment. Applicable licenses are desirable. Also, this position is in charge of scheduling programs run by Community Center, managing Community Center personnel, ordering supplies, in charge of scheduling transportation for senior citizens, youth, etc. participating in programs, may drive bus or van.

**Building Maintenance Technician:** Reports to Building Supervisor and is responsible for repairs to electrical and plumbing while performing light construction duties. Trade licenses are desirable.

**Recreation Supervisor:** Responsibilities include programming for arts and crafts, dance and exercise, etc. Supervises instructors, youth directors, and coaches for classes offered by the Community Center, and supervises youth and adult athletics and special events.

**Aquatics Supervisor:** Responsibilities include the operation and maintenance of the aquatic facilities and programs, as well as some of the recreation and athletic facilities.

Community Meeting Flyer.....	9.2
Online Survey .....	9.3
Tabulation of Online Survey.....	9.10
Paper Survey .....	9.14
Tabulation of Paper Survey.....	9.16
Parks and Recreation Advisory Board Agenda for July 10, 2019.....	9.20
City Council Agenda for July 16, 2019.....	9.???



The City of Edinburg is working on a new  
**Parks and Recreation Master Plan**  
and we need your input!



Our new Master Plan will identify a series of goals and standards that will guide future actions and programs for our parks and facilities.

YOU ARE INVITED TO ATTEND A

## Community Meeting

**MAY  
9**

**Activity Center**  
123 E. Palm Dr. Edinburg, TX 78539

**5-7  
P.M.**

There will be a short presentation regarding the process and our goals, followed by an opportunity for you to tell us what you believe is needed to reach those goals.

Please join us to assure that the City of Edinburg's Parks and Recreation programs continue to meet the needs and standards of its residents.



Light refreshments will be served





**Welcome to the  
Community Meeting/Open House  
for the new  
Edinburg Parks and Recreation Master Plan**

The purpose of this meeting is to introduce you to the proposed Goals and Actions for the new *2019 Parks and Recreation Master Plan*. This plan will serve as a guide for future facilities and activities of the Edinburg Parks and Recreation Department for the next 10 or more years.

Walk around and check out the **Goals and Actions** that are posted on the wall.

Please tell us the Goals and Actions you like most or think are most important and/or add your suggestions.

Here are the ways you can tell us what you think:

1. Place a green dot on the goals and/or actions you like the best.  
You will be given five green dots when you sign in.
2. You can write your thoughts on the comment sheets that are on a close by table
3. You can write directly on the Goal poster with your thoughts or additions.

If you haven't already done so, please participate in the **Parks and Recreation Survey**. Forms are on a table for you to fill out. Please be sure to leave them with us.

or

You can take the online survey while you are here at the meeting. There are staff members with tablets that will help you.

or

You can take the online survey later, but before May 15, at [https://cityofedinburg.com/departments/parks\\_and\\_recreation/index.php](https://cityofedinburg.com/departments/parks_and_recreation/index.php) and click the survey.

Members of Staff and the consultants are here to talk with you and answer any question you may have.

**Thank you.  
We are so glad you came today!**

5/28/2019

2019 Edinburg Parks &amp; Recreation Survey

## 2019 Edinburg Parks & Recreation Survey

Welcome to the 2019 Edinburg Parks & Recreation Survey. Your answers to the following questions will help the City of Edinburg in the planning and programming of parks and recreation facilities.

We ask that at least one family member per household complete the survey. Please note that "Family Members" refers to relatives living within your household.

Thank you for your input. If you have any questions about this survey or services offered by the Parks & Recreation Department, please call us at (956) 381-5631.



### Frequency of Visitation

5/28/2019

2019 Edinburg Parks & Recreation Survey

**1. How often do you or your family members visit the following Edinburg parks and/or recreational facilities?**

*Mark only one oval per row.*

	Very Frequently	Frequently	Sometimes	Rarely	Never
APOLLO PARK (502 E. Peter St.)	<input type="radio"/>	<input type="radio"/>	<input type="radio"/>	<input type="radio"/>	<input type="radio"/>
BICENTENNIAL PARK (2202 W. Sprague St.)	<input type="radio"/>	<input type="radio"/>	<input type="radio"/>	<input type="radio"/>	<input type="radio"/>
CENIZO PARK (424 W. Sprague St.)	<input type="radio"/>	<input type="radio"/>	<input type="radio"/>	<input type="radio"/>	<input type="radio"/>
CITRUS PARK (1700 John Ave.)	<input type="radio"/>	<input type="radio"/>	<input type="radio"/>	<input type="radio"/>	<input type="radio"/>
DR. GILBERT DIAZ PARK (2002 W. Sprague St.)	<input type="radio"/>	<input type="radio"/>	<input type="radio"/>	<input type="radio"/>	<input type="radio"/>
ESCONDON CITY / SCHOOL PARK (1100 E. Trenton Rd.)	<input type="radio"/>	<input type="radio"/>	<input type="radio"/>	<input type="radio"/>	<input type="radio"/>
FREDDY GONZALEZ PARK (1402 S. Veterans Blvd.)	<input type="radio"/>	<input type="radio"/>	<input type="radio"/>	<input type="radio"/>	<input type="radio"/>
FOUNTAIN PARK (1201 E. Khun St.)	<input type="radio"/>	<input type="radio"/>	<input type="radio"/>	<input type="radio"/>	<input type="radio"/>
FRONTIER PARK (202 N. 1st Ave.)	<input type="radio"/>	<input type="radio"/>	<input type="radio"/>	<input type="radio"/>	<input type="radio"/>
JANET VACKAR PARK (3105 N. Doolittle Rd.)	<input type="radio"/>	<input type="radio"/>	<input type="radio"/>	<input type="radio"/>	<input type="radio"/>
JAYCEE PARK (420 S. 19th Ave.)	<input type="radio"/>	<input type="radio"/>	<input type="radio"/>	<input type="radio"/>	<input type="radio"/>
MEMORIAL PARK (1212 E. Sprague St.)	<input type="radio"/>	<input type="radio"/>	<input type="radio"/>	<input type="radio"/>	<input type="radio"/>
MUNICIPAL PARK (714 S. Raul Longoria Rd.)	<input type="radio"/>	<input type="radio"/>	<input type="radio"/>	<input type="radio"/>	<input type="radio"/>
NORMA LINDA TREVINO CITY / SCHOOL PARK (909 S. Mon Mack Rd.)	<input type="radio"/>	<input type="radio"/>	<input type="radio"/>	<input type="radio"/>	<input type="radio"/>
SOUTH PARK (300 E. Palm Dr.)	<input type="radio"/>	<input type="radio"/>	<input type="radio"/>	<input type="radio"/>	<input type="radio"/>
WEST PARK (402 W. Stubbs St.)	<input type="radio"/>	<input type="radio"/>	<input type="radio"/>	<input type="radio"/>	<input type="radio"/>
WILLIAM LOONEY MEMORIAL PARK (702 Cullen St.)	<input type="radio"/>	<input type="radio"/>	<input type="radio"/>	<input type="radio"/>	<input type="radio"/>
EDINBURG SPORTS & WELLNESS CENTER (Parks & Recreation Center)	<input type="radio"/>	<input type="radio"/>	<input type="radio"/>	<input type="radio"/>	<input type="radio"/>
EDINBURG SCENIC WETLANDS & WORLD BIRDING CENTER	<input type="radio"/>	<input type="radio"/>	<input type="radio"/>	<input type="radio"/>	<input type="radio"/>
FOUNTAIN POOL	<input type="radio"/>	<input type="radio"/>	<input type="radio"/>	<input type="radio"/>	<input type="radio"/>
MUNICIPAL POOL	<input type="radio"/>	<input type="radio"/>	<input type="radio"/>	<input type="radio"/>	<input type="radio"/>

**2. If you rarely or never visit Edinburg parks and/or recreation facilities, please let us know the reason.**

*Check all that apply.*

- ☐ I live in Edinburg, but the distance is too far from my home.
- ☐ I don't live in town.
- ☐ I have limited mobility and/or transportation access.
- ☐ I do not have time.
- ☐ Other: \_\_\_\_\_

**Use of Edinburg Parks & Recreation Facilities**

5/28/2019

2019 Edinburg Parks &amp; Recreation Survey

**3.3. Please select all the activity areas that you or your family members have used within the last 12 months while visiting an Edinburg park or recreation center.**

*Check all that apply.*

- ☐ Bar-B-Que Areas (non-shelters)
- ☐ Baseball / Softball Fields
- ☐ Community / Recreation Centers
- ☐ Indoor Basketball Courts
- ☐ Indoor Exercise / Fitness Center
- ☐ Fishing Areas / Ponds
- ☐ Football Fields
- ☐ Playgrounds with Equipment
- ☐ Nature Trails
- ☐ Open / Unstructured Play Areas
- ☐ Outdoor Basketball Courts
- ☐ Outdoor Tennis Courts
- ☐ Outdoor Volleyball Court
- ☐ Picnic Areas / Shelters
- ☐ Soccer Fields
- ☐ Swimming Pool
- ☐ Splash Park
- ☐ Walking, Hiking and Biking Trails
- ☐ Other: \_\_\_\_\_

**4.4. What do you or your family members usually do at Edinburg parks or recreation facilities?**

*Check all that apply.*

- ☐ Bike
- ☐ Bird and Wildlife Watching
- ☐ Play in Open Space / Play Areas
- ☐ Play in Team / Individual Sports
- ☐ Participate in programs
- ☐ Photography
- ☐ Picnic
- ☐ Sit
- ☐ Spend time with family
- ☐ Walk Dog
- ☐ Walk / Jog / Run
- ☐ Other: \_\_\_\_\_

## Program and Event Participation

5/28/2019

2019 Edinburg Parks & Recreation Survey

**5. What programs and/or activities do you or your family participate in while at an Edinburg park or recreation center? Check all that apply.**

*Check all that apply.*

- ☐ Acrobatics & Tumbling
- ☐ Afterschool Membership Program
- ☐ Arts & crafts
- ☐ Ballet
- ☐ Baseball / Little League
- ☐ Basketball
- ☐ Boxing
- ☐ Cheerleading
- ☐ Cheernastics
- ☐ Day Camps (Summer)
- ☐ Environmental Education Programs
- ☐ Events and Festivals
- ☐ Family Parties
- ☐ Family Programs
- ☐ Folklorico
- ☐ Football
- ☐ Guitar
- ☐ Karate
- ☐ Kickboxing
- ☐ MMABoxing
- ☐ Nature Programs
- ☐ Nutrition Programs
- ☐ Outdoor skill building programs (fishing, geocaching, etc)
- ☐ Softball/ Little League
- ☐ Tennis
- ☐ Track & Field
- ☐ Volleyball
- ☐ Volunteering
- ☐ Other: \_\_\_\_\_

## Getting to the Parks

**6. How do you or your family members get to Edinburg parks, trails or recreation facilities?**

*Check all that apply.*

- ☐ Bike
- ☐ Bus
- ☐ Drive
- ☐ Ride with others (ex: parents, friends)
- ☐ Ride Share Program (ex: Uber, Lyft)
- ☐ Walk
- ☐ Other: \_\_\_\_\_

5/28/2019

2019 Edinburg Parks &amp; Recreation Survey

**7. 7. Please check ALL the age groups that live in your household.***Check all that apply.*

- ☐ under 6  
☐ 6-12  
☐ 13-17  
☐ 18-24  
☐ 25-34  
☐ 35-44  
☐ 45-54  
☐ 55-64  
☐ 65-74  
☐ 75+

**What else would you like to see?****8. 8-A. Are more facilities needed for persons with disabilities, i.e. playground for all, zero depth entry pools, etc.?***Mark only one oval.*

- ☐ Yes  
☐ No  
☐ Maybe

**9. 8-B. If you answered yes to the above question, what additional facilities would you like to see for persons with disabilities?**

---

---

---

---

---

**10. 9-A. Edinburg has a system of canals and drainage channels. Would you support the creation of a trail along these channels?***Mark only one oval.*

- ☐ Yes  
☐ No  
☐ Maybe

**11. 9-B. If you answered no to the question above, please explain.**

---

---

---

---

---

5/28/2019

2019 Edinburg Parks & Recreation Survey


12. 10. What other facilities, programs or activities would you like to see the City of Edinburg offer?

\_\_\_\_\_  
\_\_\_\_\_  
\_\_\_\_\_  
\_\_\_\_\_  
\_\_\_\_\_

**Thank you for completing the survey!**

13. If you would like to learn more about Edinburg  
Parks & Recreation, please enter your email  
address below.

\_\_\_\_\_

Powered by  
 Google Forms

## Online Survey Tabulation

**1. How often do you or your family members visit the following Edinburg parks and/or recreational facilities? (Sorted by Very Frequently)**

Park	Very Frequently	Frequently	Sometimes	Rarely	Never	No Response
Municipal Park	115	89	88	34	60	69
Edinburg Sports & Wellness Center	81	41	56	34	143	100
Edinburg Scenic Wetlands & World Birding Center	66	54	76	41	125	93
Memorial Park	42	42	47	46	166	112
Norma Linda Trevino City / School Park	39	25	43	35	196	117
Bicentennial Park	36	36	68	51	164	100
Municipal Pool	35	42	65	34	170	109
Freddy Gonzalez Park	34	50	81	64	133	93
Dr. Gilbert Diaz Park	23	18	49	35	209	121
South Park	23	27	46	37	200	122
Janet Vackar Park	21	26	32	48	206	122
Fountain Pool	19	26	40	44	210	116
Cenizo Park	16	20	48	39	219	113
Escandon City / School Park	16	21	37	41	223	117
Jaycee Park	14	17	28	37	234	125
Fountain Park	12	25	39	51	207	121
Apollo Park	10	15	16	45	254	115
Citrus Park	10	9	12	31	262	131
West Park	10	15	20	32	245	133
Frontier Park	7	9	15	29	257	138
William Looney Memorial Park	5	11	13	30	259	137

**2. If you rarely or never visit Edinburg parks and/or recreation facilities, please let us know the reason.**

I live in Edinburg, but the distance is too far from my home.	113
I don't live in town.	48
I have limited mobility and/or transportation access.	6
I do not have time.	101
Other comments	70

**3. Please select all the activity areas that you or your family members have used within the last 12 months while visiting an Edinburg park or recreation center. 449 responses**

Type	Number
Walking, Hiking and Biking Trails	259
Nature Trails	217
Playgrounds with Equipment	206
Picnic Areas / Shelters	144
Splash Park	141
Baseball/Softball Fields	131
Swimming Pools	127
Community Recreation Centers	123
Bar-B-Que Areas	108
Open / Unstructured Play Areas	93
Outdoor Basketball Courts	82
Indoor Basketball Courts	79
Fishing Areas / Ponds	76
Soccer Fields	66
Football Fields	52
Outdoor Tennis Courts	38
Indoor Exercise / Fitness Center	33
Outdoor Volleyball Courts	26
Other	29

**4. What do you or your family members usually do at Edinburg parks or recreation facilities? 452 responses**

Walk/Jog/ Run	257
Spend Time with family	224
Play in Open Space / Play Areas	209
Play in Team/ Individual Sports	136
Sit	122
Picnic	120
Walk Dog	118
Bird & Wildlife Watching	110
Participate in Programs	104
Bike	84
Photography	80
Other	20

**5. What programs and/or activities do you or your family participate in while at an Edinburg park or recreation center? Check all that apply. 403 responses**

Environmental Education Programs	47
Family Programs	47
Day Camps (Summer)	44
Track & Field	36
Other	35
Volleyball	34
Outdoor skill building programs	33
Acrobatics & Tumbling	30
Arts & Crafts	29
Volunteering	27
Afterschool Membership Program	26
Cheerleading	26
Tennis	21
Guitar	17
Karate	17
Ballet	15
Boxing	15
Folklorico	13
Nutrition	13
Cheerleading	8
Kickboxing	8
MMA Boxing	8
Walk, jog, run	7

**6. How do you or your family members get to Edinburg parks, trails or recreation facilities? 455 responses**

Drive	398
Walk	87
Ride with others	45
Bike	38
Bus	4
Ride Share Program	3
Other	3

Others are Jog, golf cart, and horse.

**7. Please check ALL the age groups that live in your household.** 455 responses

under 6	150
6-12	176
13-17	107
18-24	124
25-34	166
35-44	178
45-54	109
55-64	78
65-74	50
75+	12

**8-A. Are more facilities needed for persons with disabilities, i.e. playground for all, zero depth entry pools, etc.? Yes, No, Maybe**

Yes	165
No	57
Maybe	227

**8-B. If you answered yes to the above question, what additional facilities would you like to see for persons with disabilities?**

127 comments

**9-A. Edinburg has a system of canals and drainage channels. Would you support the creation of a trail along these channels? Yes, No, Maybe**

Yes	307
No	38
Maybe	105

**9-B. If you answered no to the question above, please explain.**

64 Comments See page

**10. What other facilities, programs or activities would you like to see the City of Edinburg offer?**

302 Comments

## 2019 PARKS AND RECREATION SURVEY

Welcome to the 2019 Parks and Recreation Survey. Your answers to the following questions will help the City in planning and programming parks and facilities. Thank you for your input.

1. Please check ☒ below ALL the Edinburg Parks and/or Facilities that you visit.

- |   |  |  |  |
|---|--|--|--|
| <input type="checkbox"/> 1. Apollo Park                   | <input type="checkbox"/> 2. Bicentennial Park                                | <input type="checkbox"/> 3. Cenizo Park          | <input type="checkbox"/> 4. Citrus Park    |
| <input type="checkbox"/> 5. Dr. Gilbert Diaz Park         | <input type="checkbox"/> 6. Escandon City/School Park                        | <input type="checkbox"/> 7. Freddy Gonzalez Park | <input type="checkbox"/> 8. Fountain Park  |
| <input type="checkbox"/> 9. Frontier Park                 | <input type="checkbox"/> 10. Janet Vackar Park                               | <input type="checkbox"/> 11. Jaycee Park         | <input type="checkbox"/> 12. Memorial Park |
| <input type="checkbox"/> 13. Municipal Park               | <input type="checkbox"/> 14. Norma Linda Trevino City/School Park            | <input type="checkbox"/> 15. South Park          | <input type="checkbox"/> 16. West Park     |
| <input type="checkbox"/> 17. William Looney Memorial Park | <input type="checkbox"/> 18. Edinburg World Birding Center & Scenic Wetlands | <input type="checkbox"/> 19. Municipal Park Pool | <input type="checkbox"/> 20. Fountain Pool |

2. Which four of the parks, trails and recreation facilities from Question 1 do you and members of your household visit the MOST OFTEN? Write in your answers below using the numbers from the list in Question 1, or check "NONE."

1<sup>st</sup> \_\_\_\_\_ 2<sup>nd</sup> \_\_\_\_\_ 3<sup>rd</sup> \_\_\_\_\_ 4<sup>th</sup> \_\_\_\_\_ NONE \_\_\_\_\_

3. From the following list, please check ALL the parks, trails, and recreation facilities operated by the City of Edinburg Parks and Recreation Department that you or members of your household have used or visited over the past 12 months.

- |  |  |
|--|--|
| <input type="checkbox"/> (01) Walking, hiking, and biking trails | <input type="checkbox"/> (10) Fishing areas/ponds            |
| <input type="checkbox"/> (02) Nature trails                      | <input type="checkbox"/> (11) Indoor basketball courts       |
| <input type="checkbox"/> (03) Playgrounds with equipment         | <input type="checkbox"/> (12) Outdoor basketball courts      |
| <input type="checkbox"/> (04) Open/unstructured play areas       | <input type="checkbox"/> (13) Outdoor tennis courts          |
| <input type="checkbox"/> (05) Soccer fields                      | <input type="checkbox"/> (14) Picnic areas/shelters          |
| <input type="checkbox"/> (06) Baseball/softball fields           | <input type="checkbox"/> (15) Community/recreation centers   |
| <input type="checkbox"/> (07) Football fields                    | <input type="checkbox"/> (16) Indoor exercise/fitness center |
| <input type="checkbox"/> (08) Swimming Pool                      | <input type="checkbox"/> (17) BBQ Pit areas                  |
| <input type="checkbox"/> (09) Splash park                        | <input type="checkbox"/> (18) Other: _____                   |

4. How do you usually get to the park/facility? Check all that apply.

- |                                    |  |
|------------------------------------|--|
| <input type="checkbox"/> (1) Walk  | <input type="checkbox"/> (2) Bike                    |
| <input type="checkbox"/> (3) Drive | <input type="checkbox"/> (4) Got a ride from someone |
| <input type="checkbox"/> (5) Bus   | <input type="checkbox"/> (6) Other: _____            |

5. What do you usually do at the park/facility?

- |  |   |
|--|---|
| <input type="checkbox"/> (1) Walk/Jog/Run            | <input type="checkbox"/> (2) Bike                               |
| <input type="checkbox"/> (3) Open space/Play area    | <input type="checkbox"/> (4) Family time                        |
| <input type="checkbox"/> (5) Picnic                  | <input type="checkbox"/> (6) Sit                                |
| <input type="checkbox"/> (7) Walk dog                | <input type="checkbox"/> (8) Team/individual sports             |
| <input type="checkbox"/> (9) Participate in Programs | <input type="checkbox"/> (10) Photography: World Birding Center |
|  | <input type="checkbox"/> (11) Other: _____                      |

CITY OF EDINBURG 2019 PARKS AND RECREATION SURVEY

**6. What programs and activities do you or your family participate in at a park or recreation center?**

Check all that apply.

- |   |  |   |   |
|---|--|---|---|
| <input type="checkbox"/> (01) Arts and Crafts       | <input type="checkbox"/> (02) Kickboxing                       | <input type="checkbox"/> (03) Baseball/Little League          | <input type="checkbox"/> (04) Boxing                    |
| <input type="checkbox"/> (05) Karate                | <input type="checkbox"/> (06) MMA Boxing                       | <input type="checkbox"/> (07) Softball/Little League          | <input type="checkbox"/> (08) Track & Field             |
| <input type="checkbox"/> (09) Folklorico            | <input type="checkbox"/> (10) Cheerleading                     | <input type="checkbox"/> (11) Cheernastics                    | <input type="checkbox"/> (12) Guitar                    |
| <input type="checkbox"/> (013) Ballet               | <input type="checkbox"/> (14) Family parties                   | <input type="checkbox"/> (15) Volunteer programs              | <input type="checkbox"/> (16) After school program      |
| <input type="checkbox"/> (17) Acrobatics & Tumbling | <input type="checkbox"/> (18) Environmental education programs | <input type="checkbox"/> (19) Outdoor skill building programs | <input type="checkbox"/> (20) Events and festivals      |
| <input type="checkbox"/> (21) Tennis                | <input type="checkbox"/> (22) Football; Volleyball; Basketball | <input type="checkbox"/> (23) Nutrition Program               | <input type="checkbox"/> (24) Summer Membership Program |

**7. Please check ALL the age groups that apply to you and your family.**

- |                                  |                                |
|----------------------------------|--------------------------------|
| <input type="checkbox"/> Under 6 | <input type="checkbox"/> 6-12  |
| <input type="checkbox"/> 13-17   | <input type="checkbox"/> 18-24 |
| <input type="checkbox"/> 25-34   | <input type="checkbox"/> 35-44 |
| <input type="checkbox"/> 45-54   | <input type="checkbox"/> 55-64 |
| <input type="checkbox"/> 65-74   | <input type="checkbox"/> 75+   |

**8. Edinburg has a system of drainage channels/canals. Would you support the creation of a trail network along these channels?**

- ☐ Yes
- ☐ No—Explain? \_\_\_\_\_
- ☐ Maybe

**9. Are more facilities needed for persons with disabilities, i.e. playground for all, zero depth entry pools, etc.?**

- ☐ Yes ☐ No ☐ Maybe

If you have any questions, please contact the Edinburg Parks and Recreation Department at 956-381-5631 or come by our office located at 315 E. Palm Drive.

Again, thank you and look forward to seeing you at the Parks

### Paper Survey Results

280 surveys were collected mainly at spots and other events at Municipal Park and the Wellness and Recreation Center.

Question on how often parks were visited was left off when the survey was printed for distribution and the questions renumbered.

**1. Please check ☒ below the ALL the Edinburg Parks that you go to.**

Apollo Park	18	6%
Bicentennial Park	114	41%
Cenizo Park	13	5%
Citrus Park	15	5%
Dr. Gilbert Diaz Park	16	6%
Escandon City/School Park	38	14%
Freddy Gonzalez Park	70	25%
Fountain Park	51	18%
Frontier Park	7	3%
Janet Vackar Park	43	15%
Jaycee Park	63	23%
Memorial Park	77	28%
Municipal Park	156	56%
Trevino City/School Park	70	25%
South Park	46	16%
West Park	23	8%
William Looney Memorial Park	11	4%
EWBC		
Municipal Park Pool		
Fountain Pool		
Wellness and Recreation Center		

**2. Which four of the parks, trails and recreation facilities from Question 1 do you and members of your household visit the MOST OFTEN? Write in your answers below using the numbers from the list in Question 1, or check "NONE."**

1<sup>st</sup> \_\_\_\_\_ 2<sup>nd</sup> \_\_\_\_\_ 3<sup>rd</sup> \_\_\_\_\_ 4<sup>th</sup> \_\_\_\_\_ NONE \_\_\_\_\_

Respondents may not have understood so there was very little filled out.

3. From the following list, please check **ALL** the parks, trails, and recreation facilities operated by the City of Edinburg Parks and Recreation Department that you or members of your household have used or visited over the past 12 months

Walking, hiking, and biking trails	80	29%
Nature trails	60	21%
Playgrounds with equipment	100	36%
Open/unstructured play areas	26	9%
Soccer fields	34	12%
Baseball/softball field	89	32%
Football fields	52	19%
Swimming Pool	55	20%
Splash park	89	32%
Fishing areas/ponds	35	13%
Indoor basketball courts	52	19%
Outdoor basketball courts	44	16%
Outdoor tennis courts	5	2%
Picnic areas/shelters	54	19%
Community/recreation centers	33	12%
Indoor exercise/fitness center	20	7%
BBQ pit areas	26	9%
Other:	<u>29</u>	10%

4. How do you usually get to the park/facility? *Check all that apply.*

Walk	51	18%
Bike	43	15%
Drive	180	64%
Got a ride from someone	11	4%
Bus	0	0%
Other:	1	0%

**5. What do you usually do at the park/facility?**

Walk/Jog/Run	151	54%
Bike	42	15%
Open space/Play area	66	24%
Family time	86	31%
Picnic	40	14%
Sit	30	11%
Walk dog	40	14%
Team/individual sports	71	25%
Recreation Programs	42	15%
Photography: World Birding Center	12	4%
Nature Programs		
Other		

**6. What programs and activities do you or your family participate in at a park or recreation center?**

Check all that apply.

Arts and Crafts	17	6%
Kickboxing	15	5%
Baseball/Little League	94	34%
Boxing	30	11%
Karate	16	6%
MMA Boxing	10	4%
Softball	62	22%
Track (Spring)	15	5%
Folklorico	12	4%
Cheerleading	18	6%
Cheerleading	7	3%
Guitar	15	5%
Ballet	11	4%
Volunteer programs	10	4%
Day Camps	26	9%
Acrobatics & Tumbling	16	6%
Environmental education programs	1	0%
Outdoor skill building programs	5	2%
Events and festivals	35	13%
Tennis	5	2%
Football, Volleyball Basketball	68	24%
Nutrition Program	3	1%
Family programs	39	14%
after school	17	6%

**7. Please check ALL the age groups that apply to you and your family.**

Under6	86	31%
6-12	121	43%
13-17	65	23%
18-24	57	20%
25-34	47	17%
35-44	64	23%
45-54	29	10%
55-64	17	6%
65-74	6	2%
75+	3	1%

**8 Edinburg has a system of drainage channels. Would you support the creation of a trail network along these channels? 167 responded**

Yes	112	40%
No	17	6%
Maybe	38	14%

**9. Are more facilities needed for persons with disabilities, i.e. playground for all, zero depth entry pools, etc.? 171 responded**

Yes	108	39%
No	18	6%
Maybe	45	16%

TO COME:

Parks and Recreation Advisory Board Agenda for July 10, 2019

City Council Agenda for July 16, 2019



**City of Edinburg, Texas**

[www.edinburg.recdesk.com](http://www.edinburg.recdesk.com)

[www.cityofedinburg.com](http://www.cityofedinburg.com)