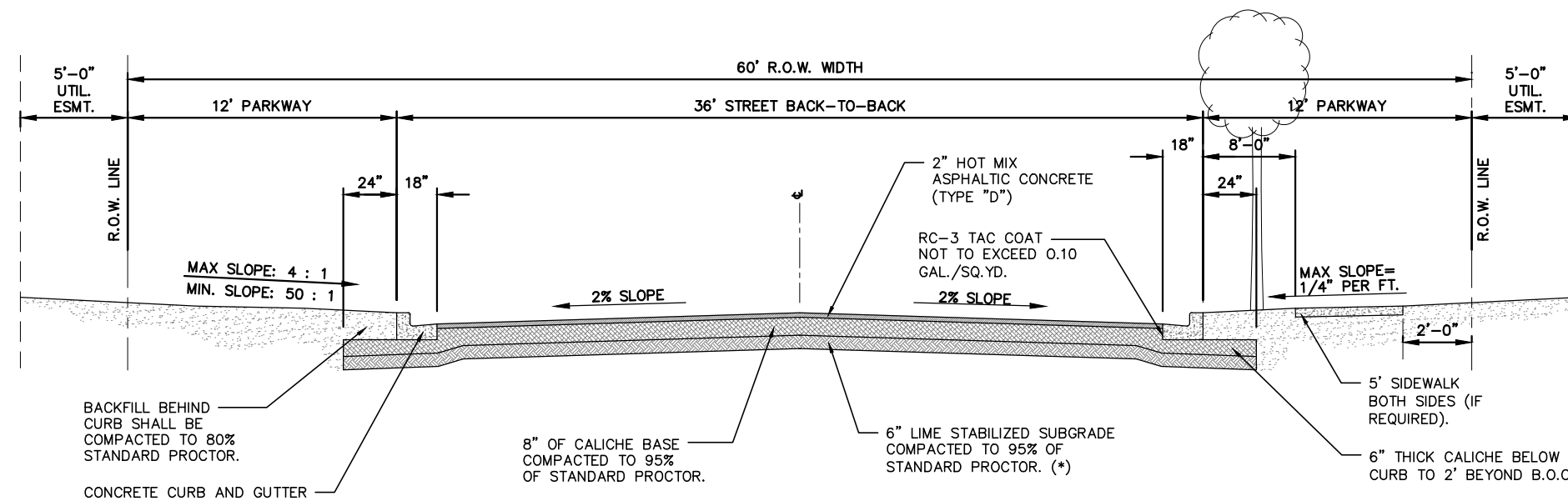


(\*) TO BE DETERMINED BY GEO-TECHNICAL REPORT.  
 NOTES:  
 1. IF AN ALTERNATIVE PAVEMENT SECTION IS REQUESTED, A PAVEMENT DESIGN ANALYSIS WILL BE REQUIRED FOR APPROVAL BY THE DIRECTOR OF PUBLIC WORKS.  
 2. FOR STREETS SERVING A SUBDIVISION WITH NO STREET TREES (LESS THAN 16 LOTS).

FLEXIBLE BASE (TYPE E GRADE 4) SHALL CONFORM TO THE FOLLOWING REQUIREMENTS, PRIOR TO THE ADDITION OF LIME:

Retained on Sq. Sieve	Percent Required
No. 2	0
No. 4	20 - 60
No. 10	40 - 75
No. 40	70 - 90
Max. PI	15
Max. Wet Ball PI	15
Wet Ball Mill Max Amount	50

**P-1** MINOR RESIDENTIAL STREET SECTION ( 32' BB - 50' R.O.W. ) - DETAIL

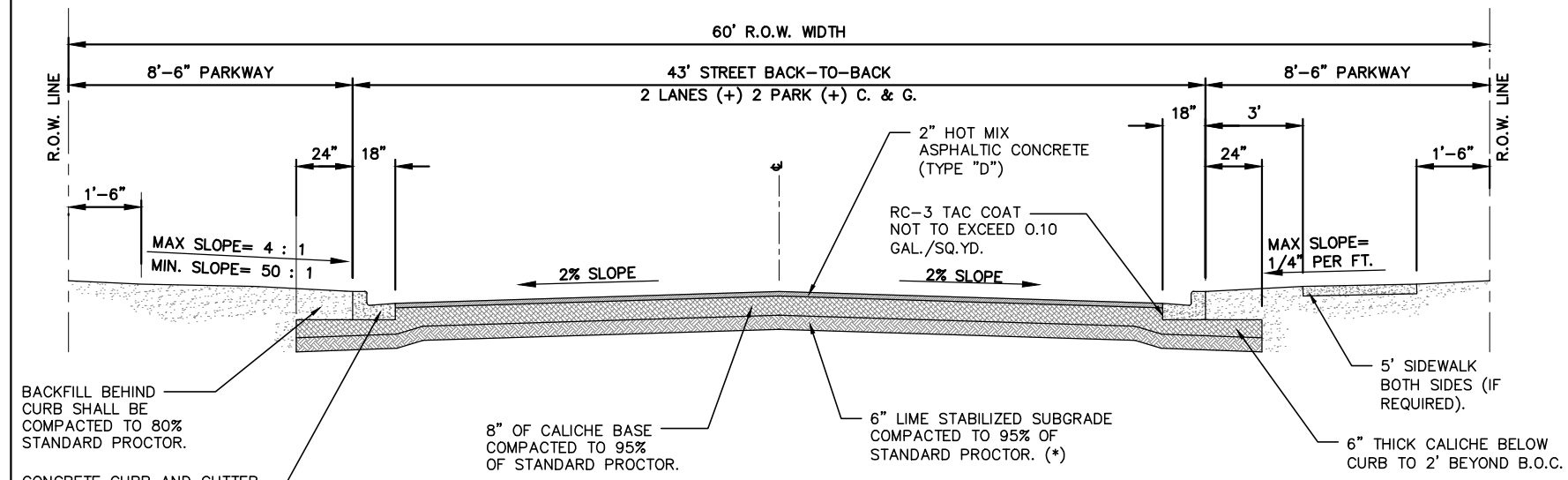


(\*) TO BE DETERMINED BY GEO-TECHNICAL REPORT.  
 NOTES:  
 1. IF AN ALTERNATIVE PAVEMENT SECTION IS REQUESTED, A PAVEMENT DESIGN ANALYSIS WILL BE REQUIRED FOR APPROVAL BY THE DIRECTOR OF PUBLIC WORKS.  
 2. FOR STREETS SERVING A SUBDIVISION WITH STREET TREES (16 OR MORE LOTS).

FLEXIBLE BASE (TYPE E GRADE 4) SHALL CONFORM TO THE FOLLOWING REQUIREMENTS, PRIOR TO THE ADDITION OF LIME:

Retained on Sq. Sieve	Percent Required
No. 2	0
No. 4	20 - 60
No. 10	40 - 75
No. 40	70 - 90
Max. PI	15
Max. Wet Ball PI	15
Wet Ball Mill Max Amount	50

**P-2** MINOR RESIDENTIAL STREET SECTION ( 32' BB - 60' R.O.W. ) - DETAIL

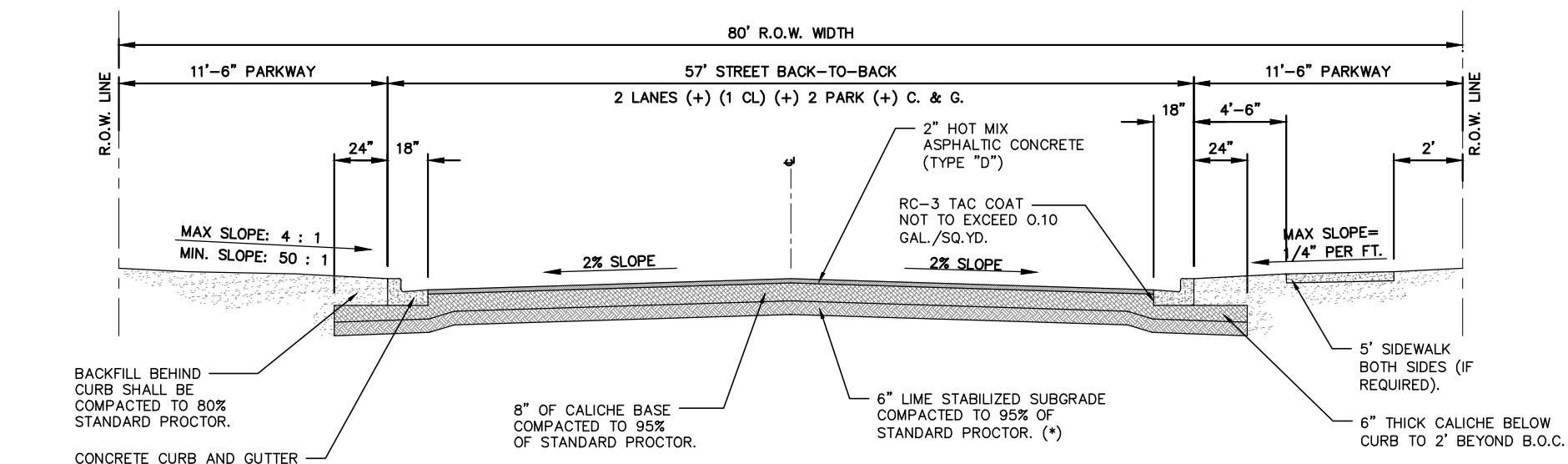


(\*) TO BE DETERMINED BY GEO-TECHNICAL REPORT.  
 NOTE:  
 IF AN ALTERNATIVE PAVEMENT SECTION IS REQUESTED, A PAVEMENT DESIGN ANALYSIS WILL BE REQUIRED FOR APPROVAL BY THE DIRECTOR OF PUBLIC WORKS.

FLEXIBLE BASE (TYPE E GRADE 4) SHALL CONFORM TO THE FOLLOWING REQUIREMENTS, PRIOR TO THE ADDITION OF LIME:

Retained on Sq. Sieve	Percent Required
No. 2	0
No. 4	20 - 60
No. 10	40 - 75
No. 40	70 - 90
Max. PI	15
Max. Wet Ball PI	15
Wet Ball Mill Max Amount	50

**P-3** RESIDENTIAL COLLECTOR AND MULTI-FAMILY STREET SECTION DETAIL

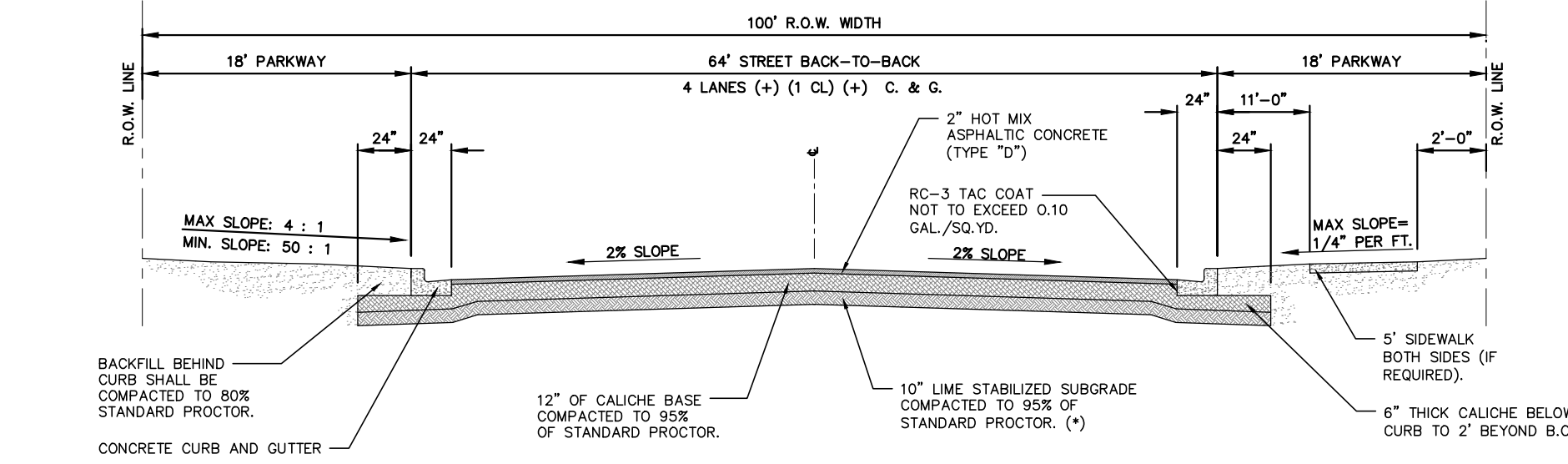


(\*) TO BE DETERMINED BY GEO-TECHNICAL REPORT.  
 NOTE:  
 IF AN ALTERNATIVE PAVEMENT SECTION IS REQUESTED, A PAVEMENT DESIGN ANALYSIS WILL BE REQUIRED FOR APPROVAL BY THE DIRECTOR OF PUBLIC WORKS.

FLEXIBLE BASE (TYPE E GRADE 4) SHALL CONFORM TO THE FOLLOWING REQUIREMENTS, PRIOR TO THE ADDITION OF LIME:

Retained on Sq. Sieve	Percent Required
No. 2	0
No. 4	20 - 60
No. 10	40 - 75
No. 40	70 - 90
Max. PI	15
Max. Wet Ball PI	15
Wet Ball Mill Max Amount	50

**P-4** MINOR AND MAJOR THOROUGHFARES COLLECTOR STREET SECTIONS DETAIL

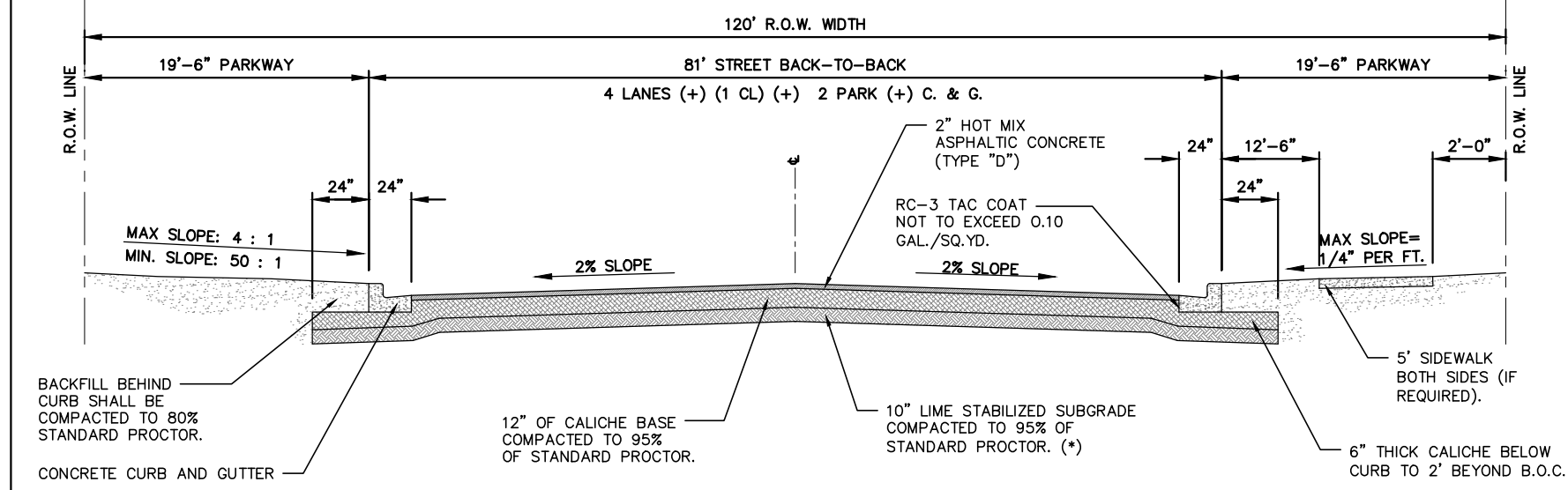


(\*) TO BE DETERMINED BY GEO-TECHNICAL REPORT.  
 NOTE:  
 IF AN ALTERNATIVE PAVEMENT SECTION IS REQUESTED, A PAVEMENT DESIGN ANALYSIS WILL BE REQUIRED FOR APPROVAL BY THE DIRECTOR OF PUBLIC WORKS.

FLEXIBLE BASE (TYPE E GRADE 4) SHALL CONFORM TO THE FOLLOWING REQUIREMENTS, PRIOR TO THE ADDITION OF LIME:

Retained on Sq. Sieve	Percent Required
No. 2	0
No. 4	20 - 60
No. 10	40 - 75
No. 40	70 - 90
Max. PI	15
Max. Wet Ball PI	15
Wet Ball Mill Max Amount	50

**P-5** MINOR ARTERIAL COLLECTOR STREET SECTION DETAIL

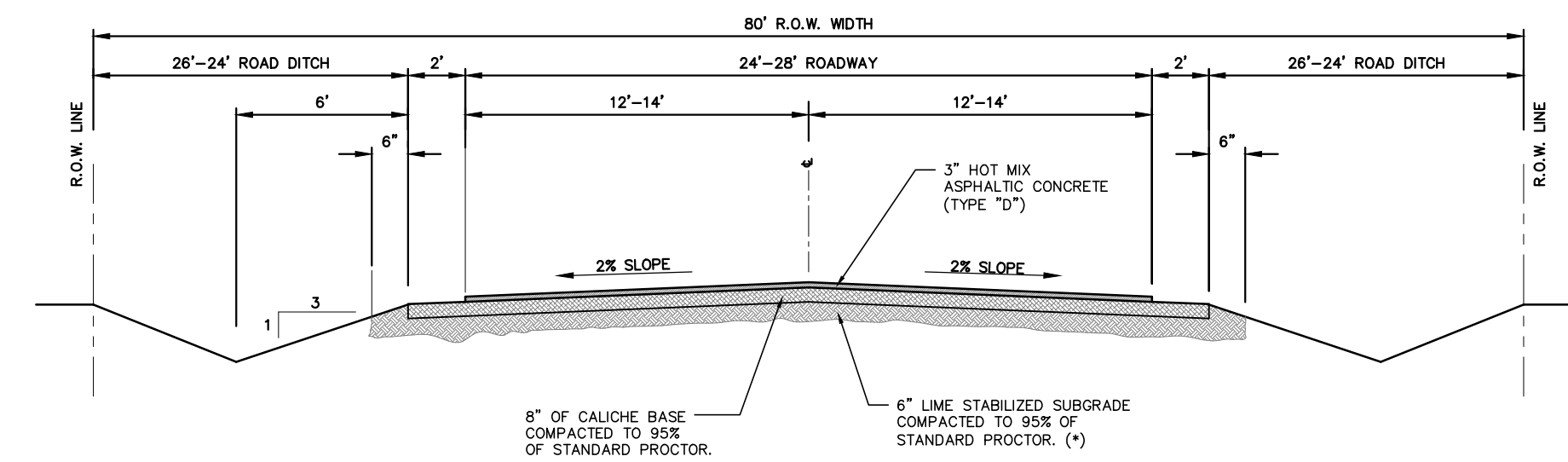


(\*) TO BE DETERMINED BY GEO-TECHNICAL REPORT.  
 NOTE:  
 IF AN ALTERNATIVE PAVEMENT SECTION IS REQUESTED, A PAVEMENT DESIGN ANALYSIS WILL BE REQUIRED FOR APPROVAL BY THE DIRECTOR OF PUBLIC WORKS.

FLEXIBLE BASE (TYPE E GRADE 4) SHALL CONFORM TO THE FOLLOWING REQUIREMENTS, PRIOR TO THE ADDITION OF LIME:

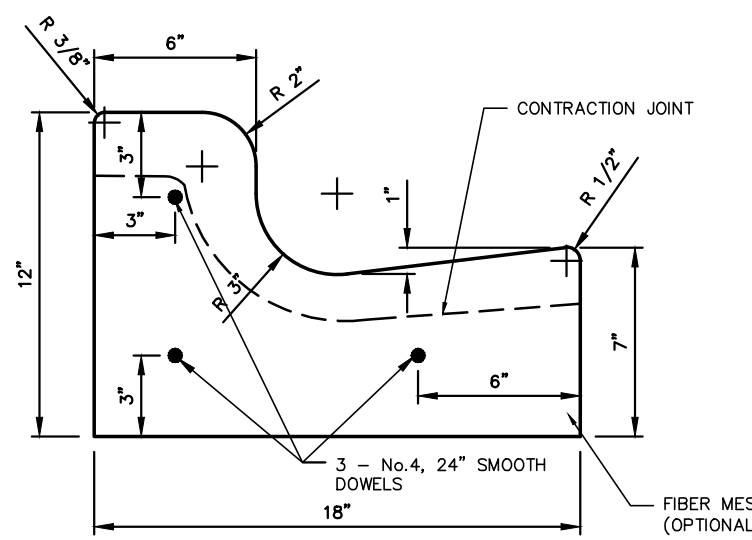
Retained on Sq. Sieve	Percent Required
No. 2	0
No. 4	20 - 60
No. 10	40 - 75
No. 40	70 - 90
Max. PI	15
Max. Wet Ball PI	15
Wet Ball Mill Max Amount	50

**P-6** PRINCIPAL ARTERIAL COLLECTOR STREET SECTION DETAIL



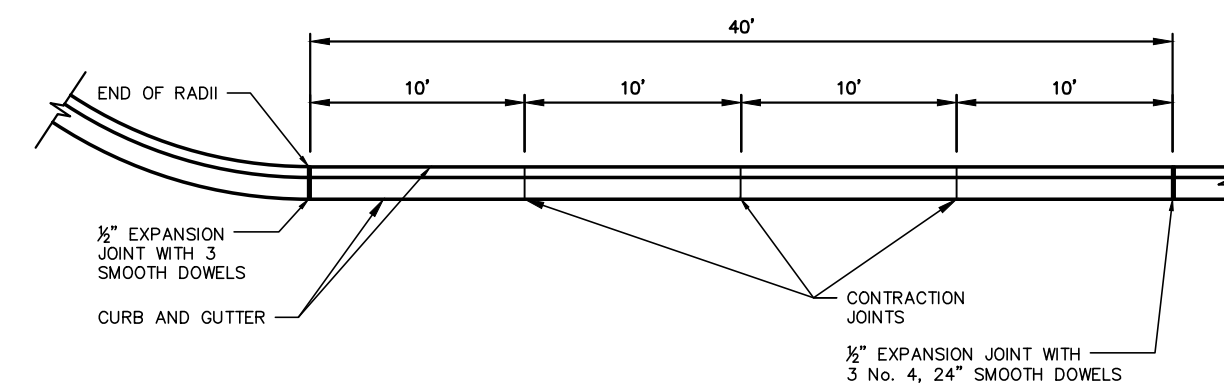
(\*) TO BE DETERMINED BY GEO-TECHNICAL REPORT.  
 NOTE:  
 IF AN ALTERNATIVE PAVEMENT SECTION IS REQUESTED, A PAVEMENT DESIGN ANALYSIS WILL BE REQUIRED FOR APPROVAL BY THE DIRECTOR OF PUBLIC WORKS.

**P-7** RURAL PAVING STREET SECTION DETAIL

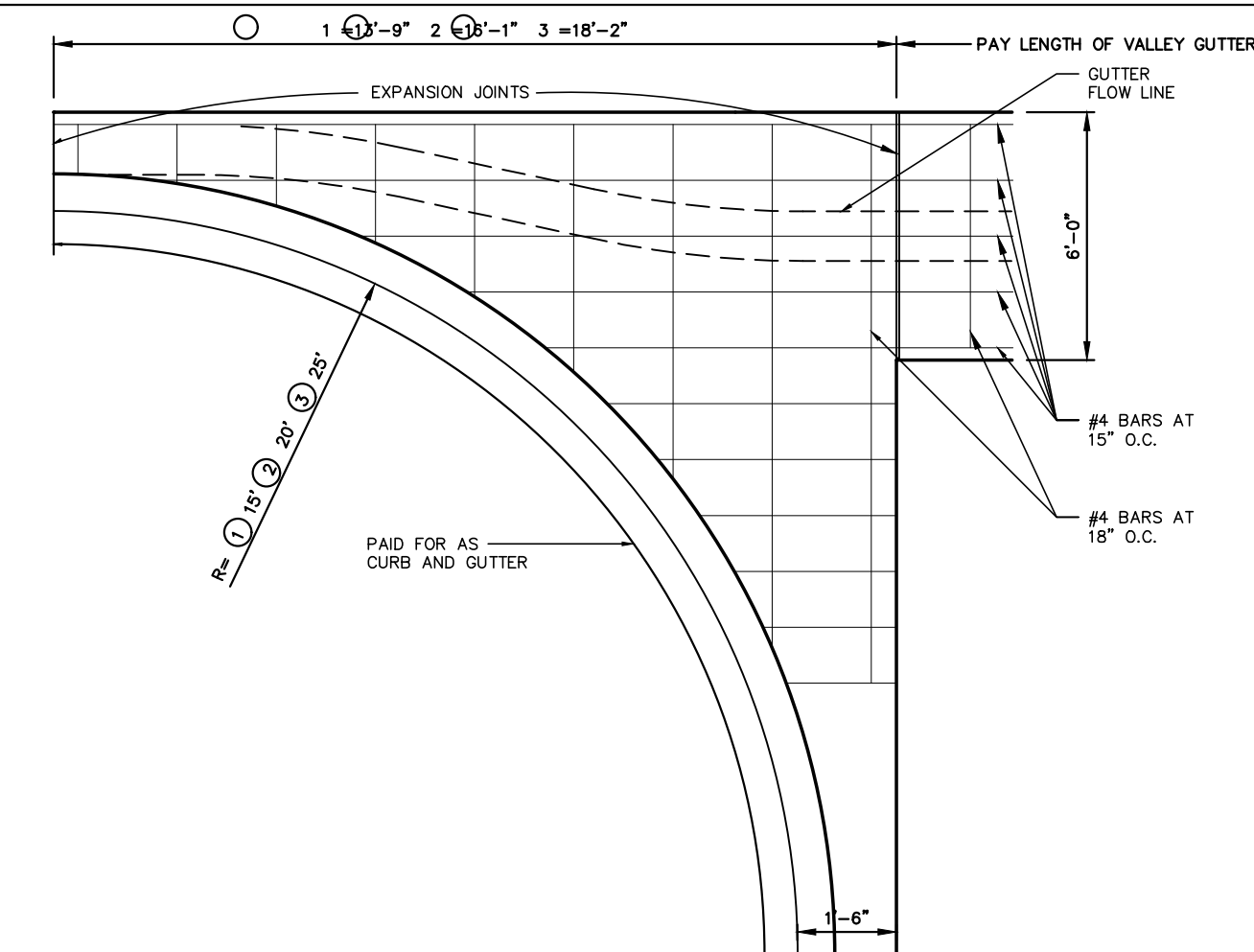


GENERAL NOTES:  
 1. CONCRETE SHALL BE 3000 PSI COMPRESSIVE STRENGTH AT 28 DAY  
 2. ALL CONCRETE WORK SHALL BE TREATED WITH MEMBRANE CURING COMPOUND TYPE 2 WHITE PIGMENTED ACCORDANCE WITH TEXAS DEPARTMENT OF TRANSPORTATION DEPARTMENTAL MATERIALS SPECIFICATIONS ITEM 4650. CONSIDERED INCIDENTAL TO CONCRETE WORK.  
 3. EXPANSION JOINTS REQUIRED AT 40' C.C. AND AT THE BEGINNING AND END OF ALL RADII. CONTRACTION JOINTS SHALL NOT EXCEED 10' C.C.  
 4. EXPANSION JOINTS SHALL HAVE 1/2" EXPANSION JOINT MATERIAL AND 3 No. 4 24" SMOOTH DOWEL BARS COATED TO PREVENT BOND.

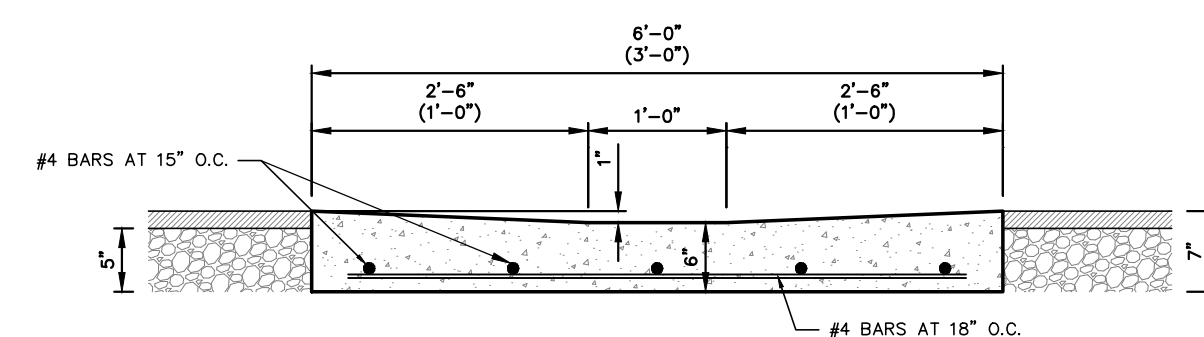
**CURB AND GUTTER DETAIL**  
 NOT TO SCALE



**P-8** TYPICAL JOINTS  
 NOT TO SCALE



**VALLEY GUTTER DETAIL**



**P-9** TYPICAL VALLEY GUTTER SECTION

FILE NAME:  
 DATE: MAY, 2014  
 SURVEYED BY:  
 DESIGNED BY: IP/JAG  
 DRAWN BY: RMM  
 REVISED BY: IP/JAG  
 CHECKED BY: IP/JAG

TITLE:  
 PAVING SYSTEM  
 STANDARD DETAILS

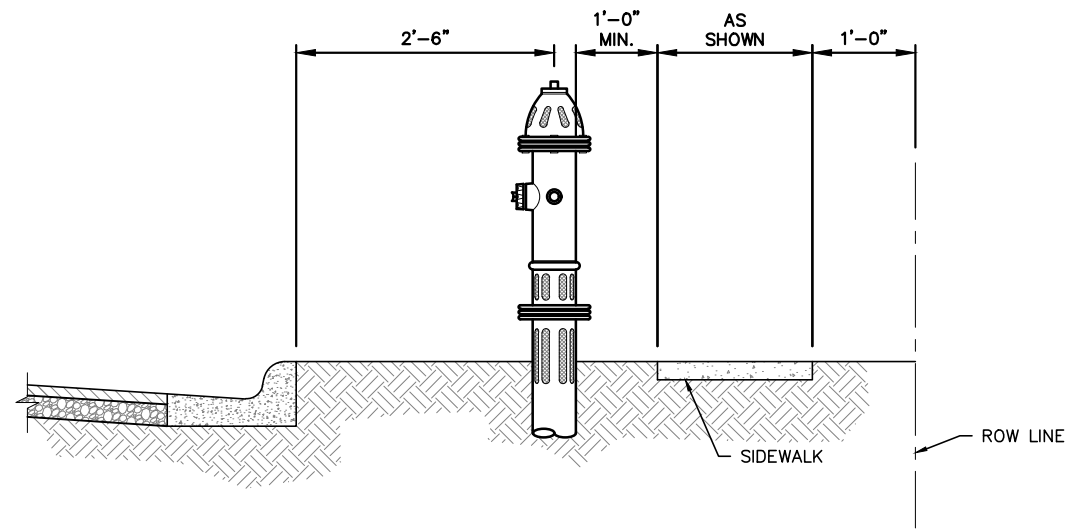
EDINBURG  
 All-America City  
 1968  
 2000

THE CITY OF  
**Edinburg**  
 Engineering

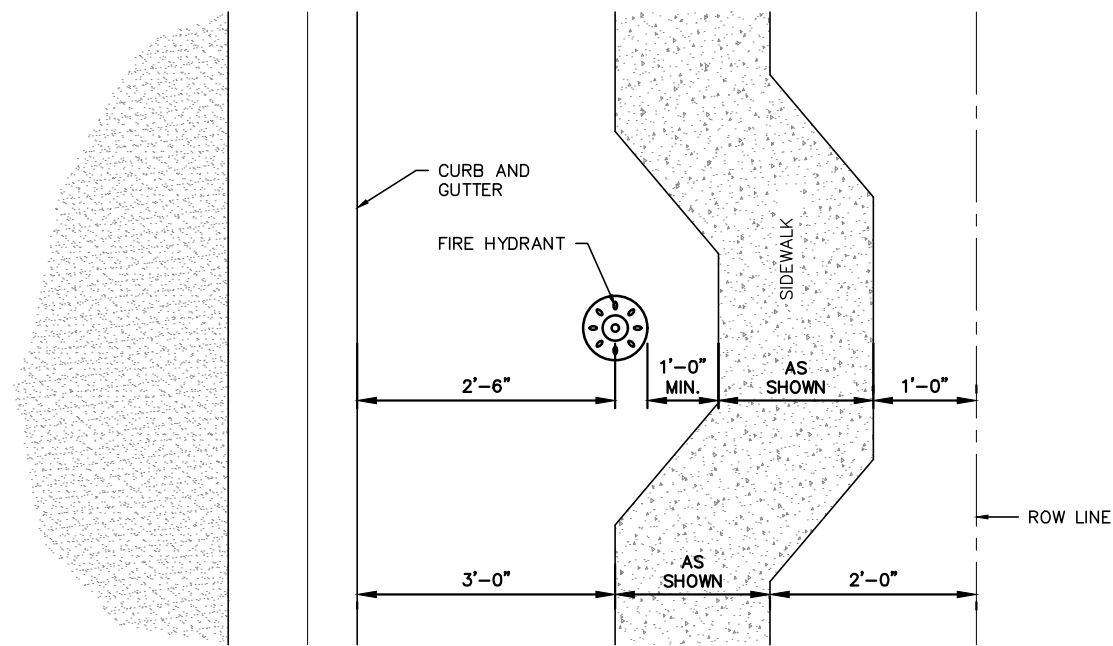
HOR: 1" = NTS  
 SCALE: VERT: 1" = NTS

DATE:  
 SHEET NO.: 1 OF 3

N:\City Standards Manual\Construction\SECTION 2 - STREETS\POLICY\CAD Details\A\_sfr.dtl\_24x36.dwg - Sep 06, 2018 - 9:34AM

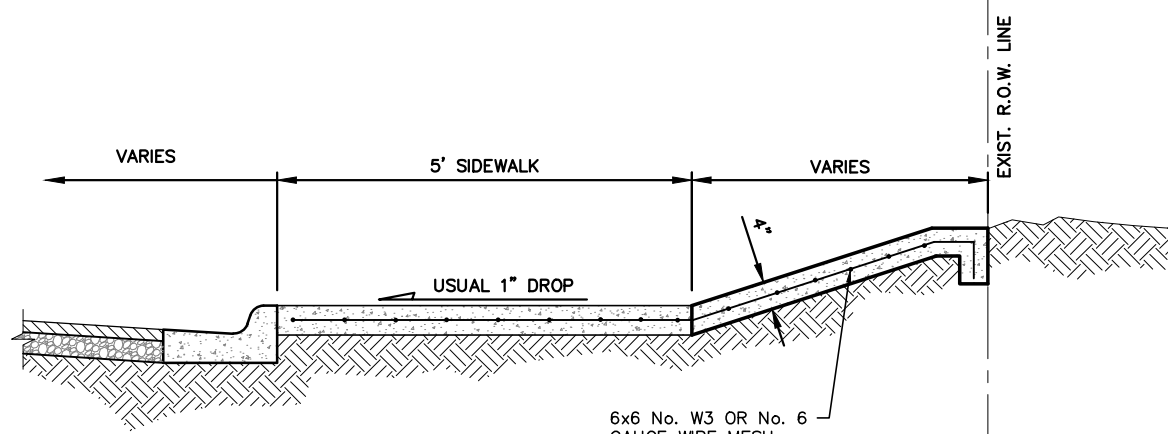


FIRE HYDRANT LOCATION - PROFILE



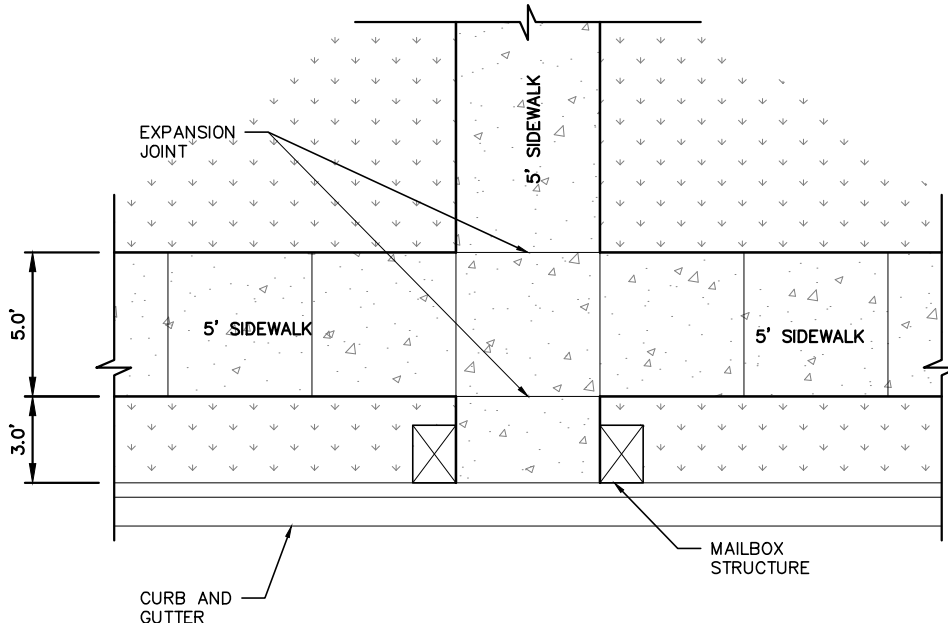
FIRE HYDRANT LOCATION - PLAN

P-19 SIDEWALK DEVIATION AT FIRE HYDRANT



SIDEWALK RIP-RAP

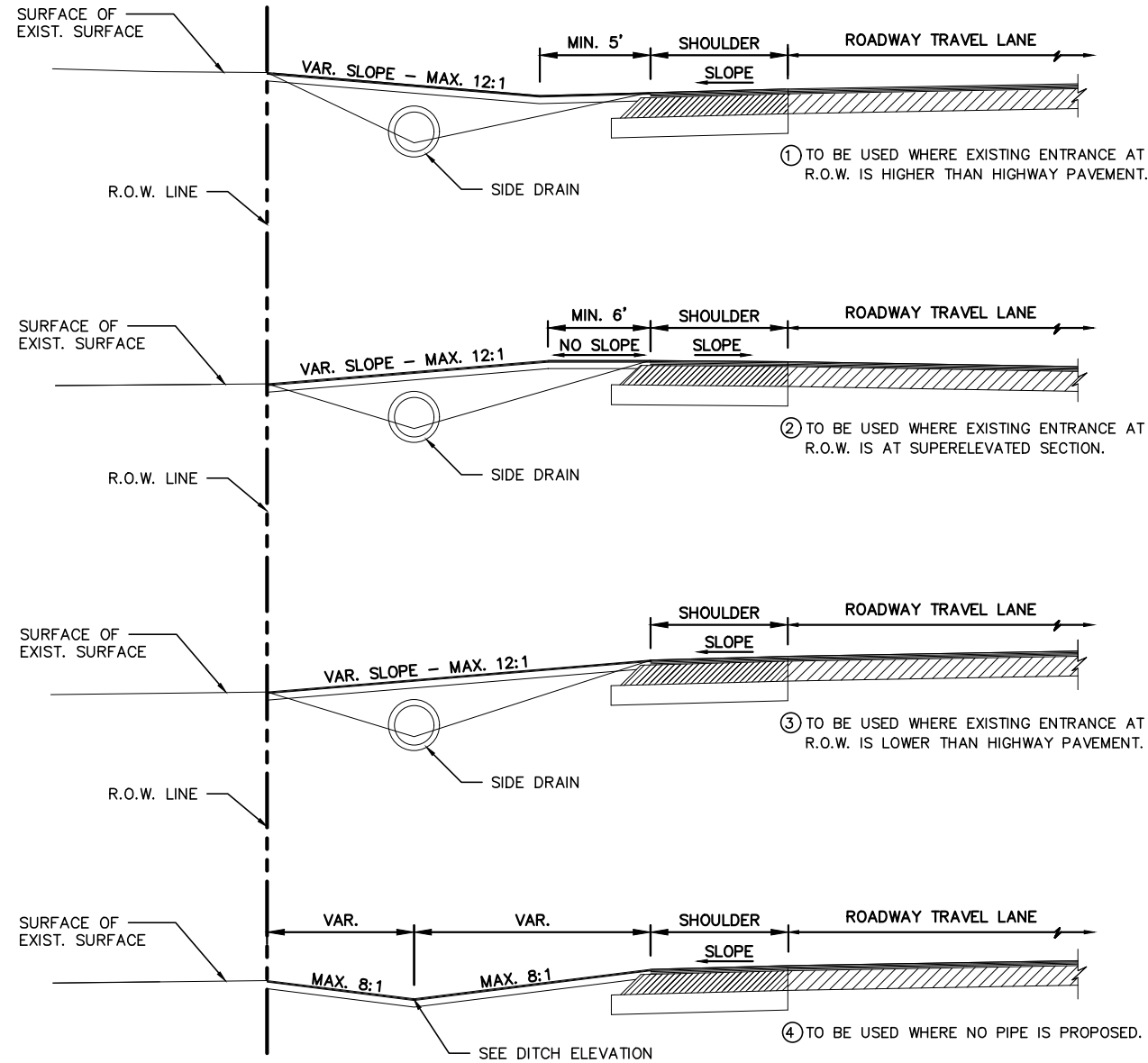
P-20 SIDEWALK RIP RAP



SIDEWALK PLAN

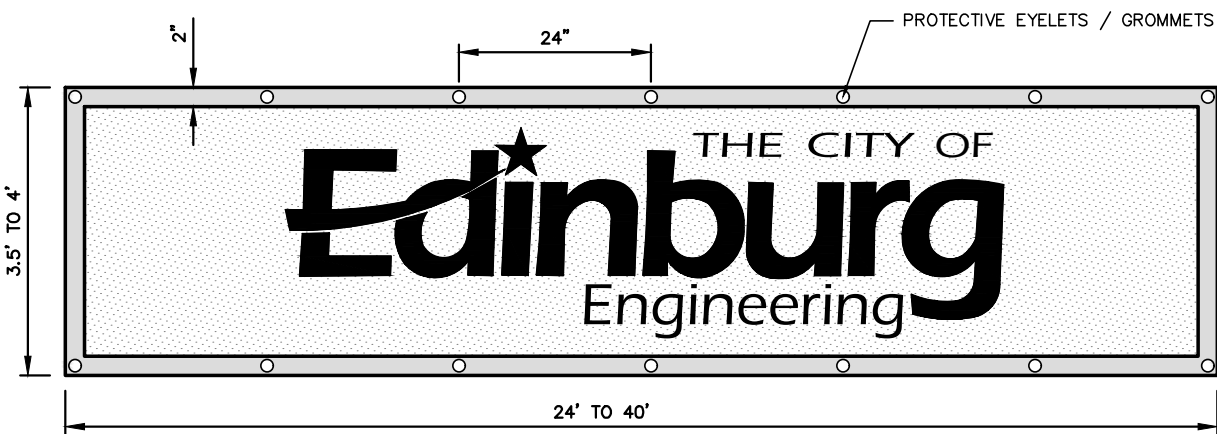
NOTE:  
1. ANY CHANGE TO SIDEWALK PLAN SHOULD BE APPROVED BY THE DIRECTOR OF PUBLIC WORKS.

P-21 ADA SIDEWALK AT MAILBOX - DETAIL



TYPICAL ENTRANCE PROFILE FOR DRIVEWAYS W/OUT C&G

P-22 ENTRANCE PROFILE FOR DRIVEWAYS WITHOUT C&G



TYPICAL BANNER

- NOTES:
- MESH MATERIAL (MESH MATERIAL WILL GUARANTEE LONGER LIFE OF THE BANNER DUE TO LESS WIND RESISTANCE AND IS REQUIRED) IS TO BE OF A TYPE THAT WILL WITHSTAND NORMAL WEATHER (WIND AND RAIN) CONDITIONS (NO EXCEPTIONS).
  - BANNER (TOP, BOTTOM AND BOTH SIDES) IS TO HAVE A FINISHED HEM TO PREVENT WIND TEARS.
  - A HAMMED EDGE APPROXIMATELY TWO (2) INCHES WIDE IS REQUIRED AT THE TOP, BOTTOM AND BOTH SIDES OF BANNER WITH METAL EYELETS INSTALLED ON DOUBLED MATERIAL FOR THE PURPOSE OF ATTACHING THE BANNER TO THE EXISTING GUIDE WIRES.
  - GROMMETS (PROTECTIVE EYELETS) MUST BE PLACED ALONG THE TOP EDGES OF THE BANNER AND ONE AT EACH BOTTOM END. GROMMETS LOCATED AT THE BOTTOM ENDS WILL HAVE HEAVIER REINFORCING OR OTHER PRE-APPROVED METHOD (I.E. D RINGS WITH REINFORCED NYLON STRAPS). THE MINIMUM GROMMET SIZE SHALL BE 1/2-INCH (INSIDE MEASUREMENT), AND THE GROMMETS SHALL BE PLACED EVERY TWENTY FOUR (24) INCHES.

TYPICAL BANNER  
DETAIL

P-23

FILE NAME:

DATE:

MAY, 2014

SURVEYED BY:

DESIGNED BY:

IP/JAG

DRAWN BY:

RMM

REVISED BY:

IP/JAG

CHECKED BY:

IP/JAG

PAVING SYSTEM

STANDARD DETAILS

TITLE:



SCALE:

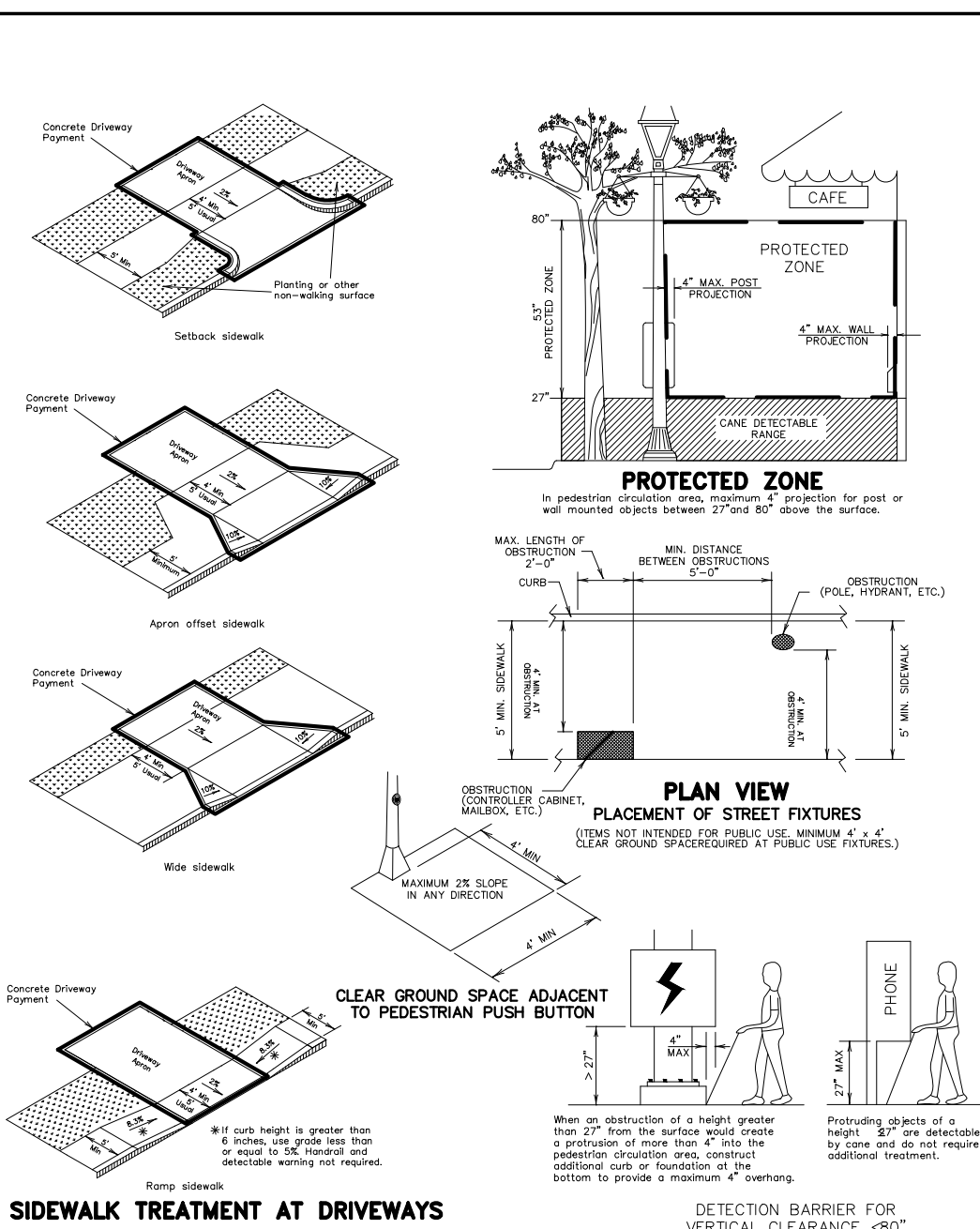
HOR: 1" = NTS

VERT: 1" = NTS

DATE:

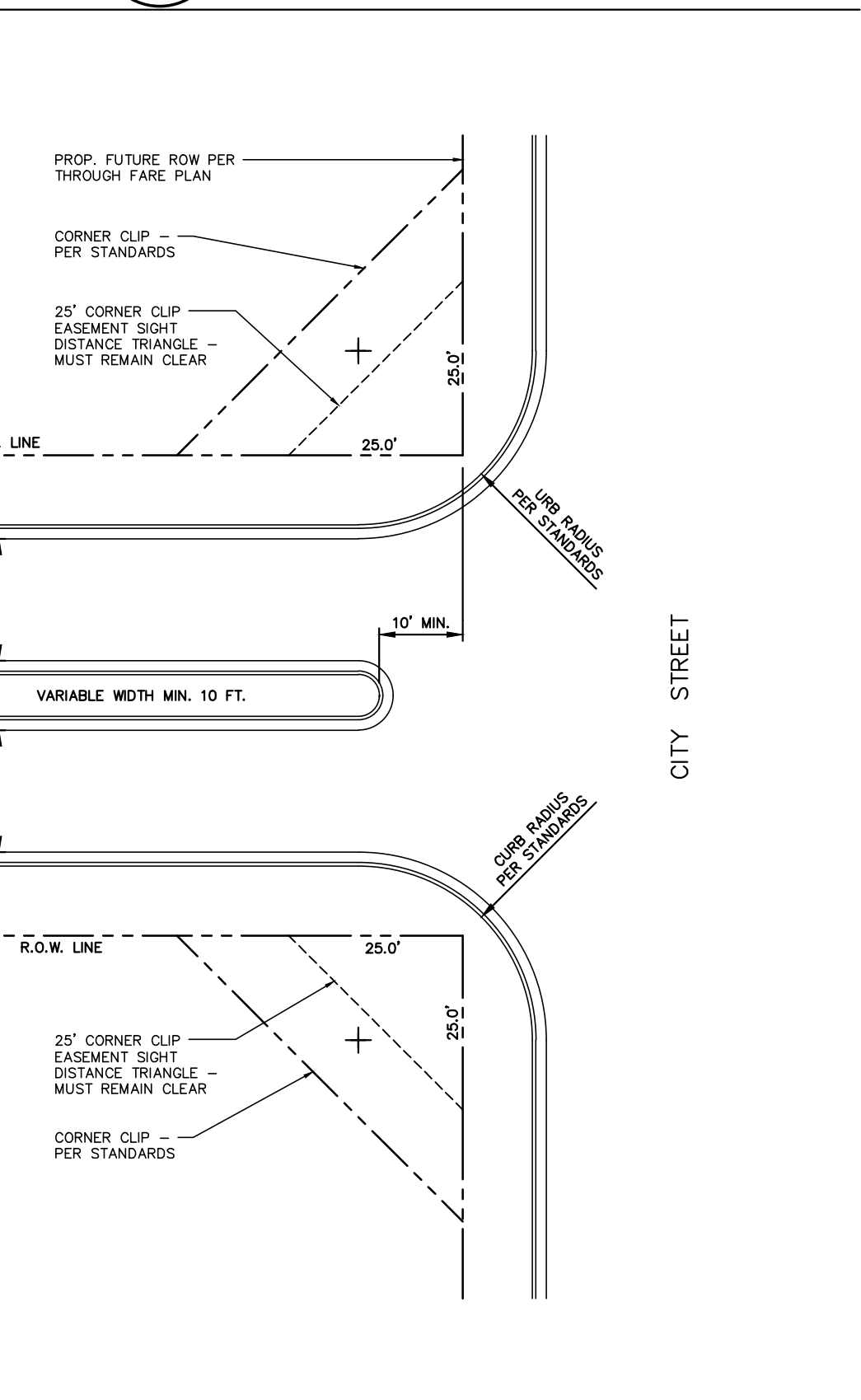
SHEET NO.:

3 OF 3



PEDESTRIAN FACILITIES AND  
SIDEWALKS

P-14 PEDESTRIAN FACILITIES  
SIDEWALK AT DRIVEWAY



### 3 GATED ENTRANCE — DETAIL