



PERMIT AMENDMENT APPLICATION

Part III, Attachment 1

GENERAL FACILITY DESIGN

Edinburg Regional Disposal Facility

Edinburg, Hidalgo County, Texas

TCEQ Permit MSW-956C

Submitted To: City of Edinburg
Department of Solid Waste Management
8601 North Jasman Road
Edinburg, Texas 78541 USA

Submitted By: Golder Associates Inc.
500 Century Plaza Drive, Suite 190
Houston, TX 77073 USA



GOLDER ASSOCIATES INC.
Professional Engineering Firm
Registration Number F-2578

INTENDED FOR PERMITTING
PURPOSES ONLY

July 2017

Project No. 1401491



Table of Contents

1.0	GENERAL FACILITY DESIGN	1
1.1	Facility Access.....	1
1.2	Waste Movement	1
1.2.1	Flow Diagram	1
1.2.2	Schematic View Drawings	1
1.2.3	Ventilation and Odor Control.....	1
1.2.4	Generalized Construction and Design Details	2
1.2.4.1	Storage and Processing.....	2
1.2.4.2	Storage and Processing Component Slab and Subsurface Supports.....	2
1.2.4.3	Storage and Processing Component Containment Dikes or Walls	2
1.3	Endangered Species.....	2

List of Figures

- Figure III1-1 Waste Movement Flow Diagram
 Figure III1-2 Schematic View of Various Waste Disposal, Processing, and Storage Areas



GOLDER ASSOCIATES INC.
 Professional Engineering Firm
 Registration Number F-2578

INTENDED FOR PERMITTING
 PURPOSES ONLY

1.0 GENERAL FACILITY DESIGN

1.1 Facility Access

30 TAC §330.63(b)(1)

The facility shares an entrance with Type IV Landfill TCEQ Permit MSW-2302 where fencing has been installed along its southern boundary to provide continuous security and access control. A gate located at the facility entrance is locked by site personnel at the end of the day's operations. Another gate is located on the west side of the facility on Encinitos Road and is locked unless access is needed by site personnel. Additional fencing is not required because the surrounding land use is primarily agricultural and industrial.

1.2 Waste Movement

30 TAC §330.63(b)(2)

Figure III1-1, Waste Movement Flow Diagram and Figure III1-2, Schematic View of Various Waste Disposal, Processing, and Storage Areas illustrate a generalized process design and working plan of the overall facility.

1.2.1 Flow Diagram

30 TAC §330.63(b)(2)(A)

Figure III1-1, Waste Movement Flow Diagram is a flow diagram illustrating storage, processing, and disposal sequences for the types of waste accepted in accordance to Part II, §1.0 Waste Acceptance Plan.

1.2.2 Schematic View Drawings

30 TAC §330.63(b)(2)(B)

Figure III1-2, Schematic View of Various Waste Disposal, Processing, and Storage Areas is a schematic view showing the various phases of collection, separation, processing, and disposal for the types of waste accepted in accordance to the Part II, §1.0 Waste Acceptance Plan. Structures/areas for the gatehouse and scales, citizen collection station, reusable material staging area, and large item salvage and white good storage area is located within the permit boundary of Type IV Landfill TCEQ Permit MSW-2302.

1.2.3 Ventilation and Odor Control

30 TAC §330.63(b)(2)(C)

The facility will follow measures outlined in Part IV, Site Operating Plan §4.14, Odor Management Plan for all storage, separation, processing, and disposal units.

1.2.4 Generalized Construction and Design Details

1.2.4.1 Storage and Processing

30 TAC §330.63(b)(2)(D)

Roll-off waste containers are used for temporary storage for citizen collection, reusable materials, and large item salvage. Roll-off waste containers are prefabricated to industry standards, therefore generalized construction details are not required.

1.2.4.2 Storage and Processing Component Slab and Subsurface Supports

30 TAC §330.63(b)(2)(E)

The foundation of designated areas for citizen collection, reusable materials, and large item salvage as depicted in Figure III1-2, Schematic View of Various Waste Disposal, Processing, and Storage Areas are maintained; no slab and subsurface supports for roll-off waste containers are required.

1.2.4.3 Storage and Processing Component Containment Dikes or Walls

30 TAC §330.63(b)(2)(F)

All storm water is contained within the facility boundary as well as within the Type IV Landfill TCEQ Permit MSW-2302 boundary with no discharge into surface water in the state as a result of any storm event; therefore containment dikes or walls are not required to enclose all storage and processing components and all loading and unloading areas.

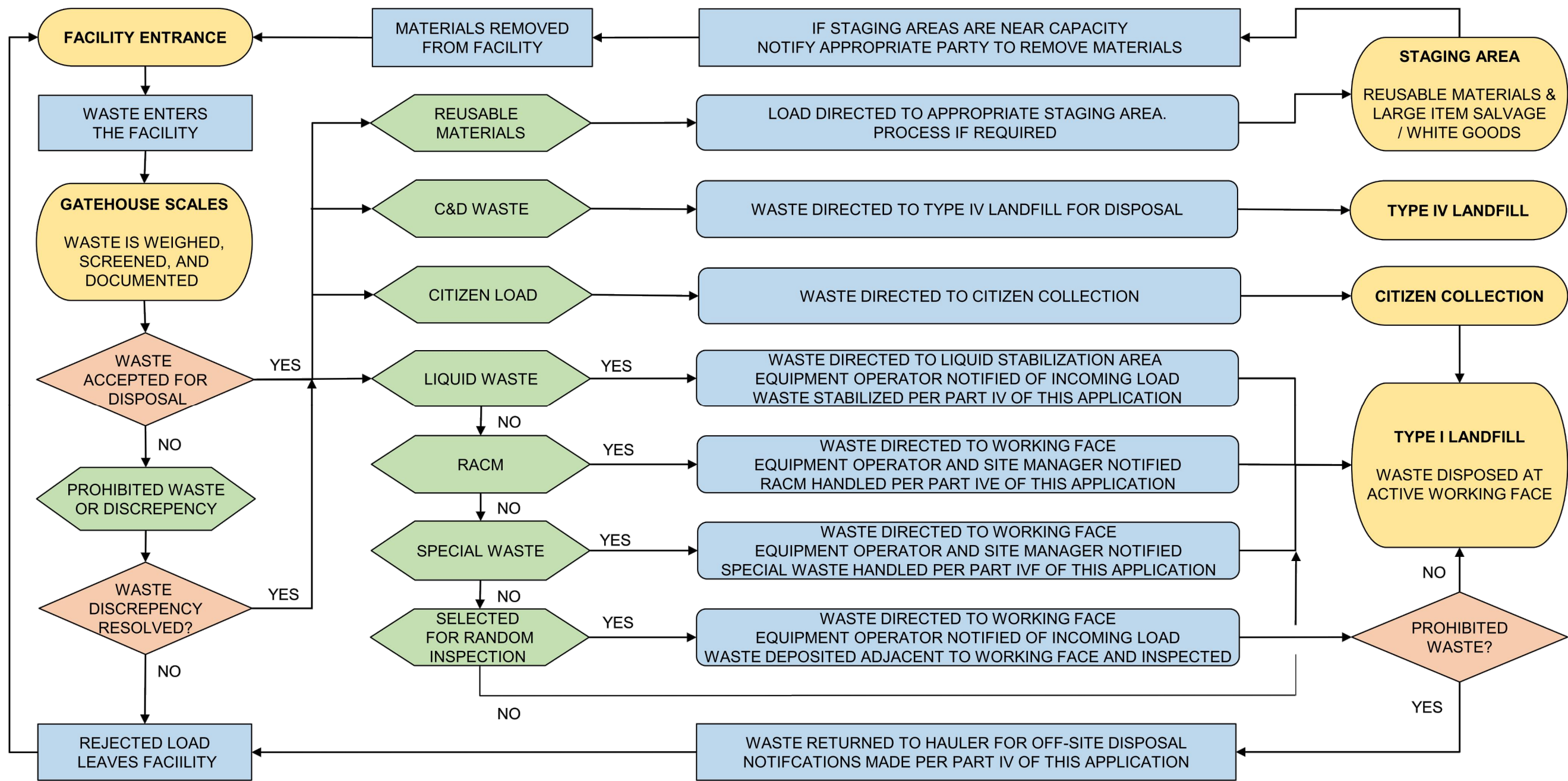
1.3 Endangered Species

30 TAC §330.63(b)(5)

In response to Texas Parks and Wildlife Department (TPWD) recommendations, the facility will employ best management practices to minimize potential negative impacts to federally-listed and state-listed wildlife to include a “no kill” policy. In addition, the City of Edinburg (City) made an agreement with United States Fish and Wildlife Service (USFWS) to preserve a 200-foot wide corridor of dense native woodland along the northern property boundary established with native vegetation, connecting to the southern property boundary of dense native woodland owned by the City. Please refer to Part IIE, Endangered or Threatened Species for response to TPWD recommendations and agreement with USFWS.

FIGURES

- NOTES
1. PER PREVIOUS TCEQ AUTHORIZATION, SCALEHOUSE IS SHARED BY BOTH THE TYPE I AND TYPE IV LANDFILLS OWNED BY THE CITY OF EDINBURG.
 2. REFER TO FIGURE III-1-2 FOR LOCATION OF STAGING AREA AND CITIZEN COLLECTION.



ISSUED FOR PERMITTING PURPOSES ONLY

0	2017-07-21	PERMIT AMENDMENT APPLICATION SUBMITTAL	CEI	TDS	JBF	CEI
REV.	YYYY-MM-DD	DESCRIPTION	DESIGNED	PREPARED	REVIEWED	APPROVED



CLIENT

CITY OF EDINBURG
SOLID WASTE MANAGEMENT

CONSULTANT

Golder Associates

HOUSTON OFFICE
500 CENTURY PLAZA DRIVE, SUITE 190
HOUSTON, TEXAS
USA
[+1] (281) 821-6868
www.golder.com

PROJECT	EDINBURG REGIONAL DISPOSAL FACILITY
PERMIT AMENDMENT APPLICATION TCEQ PERMIT MSW-956C	EDINBURG, HIDALGO COUNTY, TEXAS
TITLE	WASTE MOVEMENT FLOW DIAGRAM
PROJECT NO.	1401491
APPLICATION SECTION	III-1
REV.	0
1 of 2	FIGURE III-1-1

