

PLAT Name

MUMFORD PARK NO. 3

PLATS-Number

PLATS-48830

Last LARA Update

1/11/2019

tif Number

3348101.TIF

tif Size

235.04 KB

tif file

PLAT OF "MUMFORD PARK NUMBER THREE"

A SUBDIVISION OF
PART OF THE NORTHWEST 1/4 OF
SECTION 31, TOWN 1 NORTH,
RANGE 5 EAST, HAMBURG TOWNSHIP,
LIVINGSTON COUNTY, MICHIGAN.

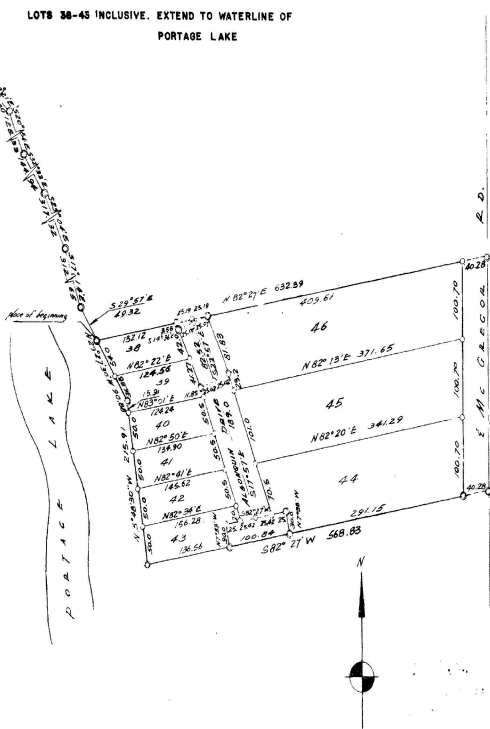
SCALE: 1" = 100'



ALL DIMENSIONS IN FEET AND DECIMALS THEREOF
ALL CURVE DISTANCES ARE CHORDS

SURVEY BY
ATWELL-HICKS INC.
ANN ARBOR, MICH.

LOTS 38-45 INCLUSIVE. EXTEND TO WATERLINE OF
PORTAGE LAKE



DEDICATION

KNOW ALL MEN BY THESE PRESENTS, that we, Rogers and Cotton
Company, a Co-Partnership composed of Donald G.
Rogers and George A. Cotton

as proprietor, have caused the land embraced in the annexed plat to be surveyed,
laid out and plotted, to be known as "Mumford Park Number Three,"
A Subdivision of Part of the Northwest 1/4 of Section
31, Town 1 North, Range 5 East, Hamburg Township,
Livingston County, Michigan,
and that the road and drive as shown on said plat are
hereby dedicated to the use of the public

Signed and Sealed in
the Presence of
By Donald G. Rogers (S.S.)
Mary E. Miller (Witness) Donald G. Rogers - Co-Partner
George A. Cotton (S.S.)
Jean E. Towner (Witness) George A. Cotton - Co-Partner

ACKNOWLEDGMENT

STATE OF MICHIGAN
County of Livingston
On this 17th day of October, 1975, before me,
a Notary Public in and for said County,
appeared Donald G. Rogers and George A. Cotton to me
personally known, who being each by me duly sworn did
say that they are Co-Partners of Rogers and Cotton
Company, a Co-Partnership and that said instrument
was signed in behalf of said Co-Partnership and acknow-
ledged said instrument to be the free act and deed of
said co-partnership.

G. Towner
Notary Public Washtenaw County
My Commission expires August 1978

SURVEYOR'S CERTIFICATE

I hereby certify that the plat hereon delineated is a correct one and that permanent
metal monuments consisting of bars not less than one-half inch in diameter and 48 inches
in length, or shorter bars of not less than one-half inch in diameter topped over each
other at least 6 inches with an overall length of not less than 48 inches, secured in a
concrete cylinder of at least 4 inches in diameter and 48 inches in depth have been placed
at points marked thus () as shown shown at all angles in the boundaries of the
land plotted, or at the intersections of streets, intersections of alleys, or of streets and
alleys, and at the intersections of streets and alleys with the boundaries of the plat as
shown on said plat.

Herbert S. Hicks
Registered Land Surveyor or Registered Professional Engineer
Herbert S. Hicks No. 1715

APPROVAL BY BOARD OF COUNTY ROAD COMMISSIONERS

This plat has been examined and was approved on the 19th
day of October, 1975 by the LIVINGSTON
County Board of Road Commissioners.

Melvin H. Hines
Chairman
Tracy F. Crandall
Commissioner
Russ J. Robb
Commissioner

COUNTY TREASURER'S CERTIFICATE

Office of County Treasurer, LIVINGSTON County.
I hereby certify that there are no tax liens or titles held by the State on the lands de-
scribed herein, and that there are no tax liens or titles held by individuals on said lands,
for the five years preceding the 17th day of
October, 1975, and that the taxes for said period of
five years are all paid, as shown by the records of this office.

This certificate does not apply to taxes, if any, now in process of collection by township,
city or village collecting officers.
Jennie M. Eastman
County Treasurer

MUNICIPAL APPROVAL

This plat was approved by the TOWNSHIP BOARD
of the TOWNSHIP of Hamburg
at a meeting held Oct. 13, 1975
Jane Ann Bennett
Ann Bennett (Clerk)

APPROVAL BY COUNTY PLAT BOARD

This plat was approved on the 19th day of
October, 1975
Frank D. Bush
County Register of Deeds
John A. Hagman
County Clerk
Jennie M. Eastman
County Treasurer
Lloyd W. Munsell
County Drain Commissioner

181-33