

PLAT Name

RIVER VALLEY SUBDIVISION

PLATS-Number

PLATS-48591

Last LARA Update

1/11/2019

tif Number

3383501.TIF

tif Size

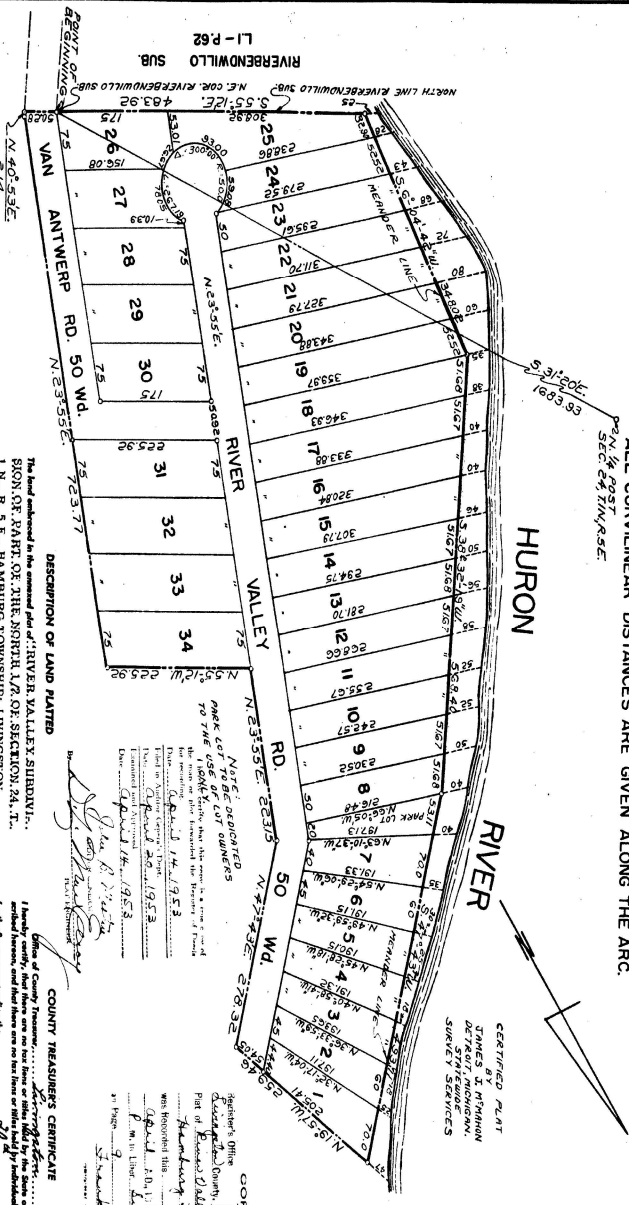
289.58 KB

tif file

RIVER VALLEY SUBDIVISION OF PART OF THE N1/2 OF SECTION 24, T14N, R5E, HAMBURG TWP., LIVINGSTON COUNTY, MICHIGAN.



Note: ALL DIMENSIONS ARE SHOWN IN FEET AND DECIMALS THEREOF.
ALL CURVILINEAR DISTANCES ARE GIVEN ALONG THE ARC.



CERTIFIED PLAT BY JAMES J. MERRIN, DEPUTY CLERK OF LIVINGSTON COUNTY, MICHIGAN. SURVEY SERVICES

KNOW ALL MEN BY THESE PRESENTS, that I, EDITH A. REISE, of the County of Livingston, State of Michigan, have caused the foregoing plat to be surveyed, laid out and plotted, to be known as the "RIVER VALLEY SUBDIVISION OF PART OF THE NORTH 1/2 OF SECTION 24, T. 14 N., R. 5 E., HAMBURG TOWNSHIP, LIVINGSTON COUNTY, MICHIGAN."

EDITH A. REISE, a widow

ACKNOWLEDGMENT

APPROVAL BY BOARD OF COUNTY ROAD COMMISSIONERS

APPROVAL BY COUNTY PLAT BOARD

SURVEYOR'S CERTIFICATE