

PLAT Name

# CREEK AND MEADOWS SUBDIVISION NO. 2

PLATS-Number

PLATS-39979

Last LARA Update

1/14/2019

tif Number

5319001.tif

tif Size

179.01 KB

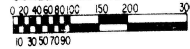
tif file

LIBER \_\_\_\_\_, PAGE \_\_\_\_\_

## "CREEK & MEADOWS SUBDIVISION NO. 2"

A SUBDIVISION OF PART OF THE S.W. 1/4 OF SECTION 9, T1N-R5E,  
HAMBURG TOWNSHIP, LIVINGSTON COUNTY, MICHIGAN

SCALE: ONE INCH=100 FEET.



SHEET ONE

OF  
TWO SHEETS

### SURVEYOR'S CERTIFICATE

I, Gary R. Ross, Surveyor, certify:

That I have surveyed, divided, and mapped the land shown on this plat, described as "Creek & Meadows Subdivision No. 2", a subdivision of part of the S.W. 1/4 of Section 9, T1N-R5E, Hamburg Township, Livingston County, Michigan; described as commencing at the S. 1/4 corner of said Section 9, thence N. 89° 42' 30" W., 1335.79 feet along the south section line to the center of Pettysville Road; thence N. 0° 12' 00" E., 181.20 feet along the centerline of Pettysville Road to the point of beginning of the land to be described; thence continuing N. 0° 12' 00" E., 2106.00 feet along the centerline of Pettysville Road; thence due East 215.00 feet; thence S. 0° 12' 00" W., 278.53 feet; thence Southeast on an arc left having a length of 67.71 feet, a central angle of 14° 45' 03", a radius of 263.00 feet and a chord that bears S. 71° 04' 50" E., 67.52 feet; thence S. 0° 12' 00" W., 211.95 feet; thence due West, 65.00 feet; thence S. 0° 12' 00" W., 278.53 feet; thence Southeast on an arc left having a length of 67.71 feet, a central angle of 14° 45' 03", a radius of 263.00 feet and a chord that bears S. 71° 04' 50" E., 67.52 feet; thence S. 0° 12' 00" W., 821.95 feet; thence due West 50.00 feet; thence S. 0° 12' 00" W., 236.00 feet; thence S. 4° 57' 14" W., 125.61 feet; thence S. 0° 12' 00" W., 181.66 feet; thence due West, 300.00 feet to the center of Pettysville Road and the point of beginning containing 13.42 acres more or less containing Outlots A, B, C and D and Lots 9 thru 17 inclusive.

That I have made such survey, land-division and plat by the direction of the owners of such land.

That such plat is a correct representation of all the exterior boundaries of the land surveyed and the subdivision of it.

That the required monuments and lot markers have been located in the ground or that surety has been deposited with the municipality, as required by Section 125 of the Act.

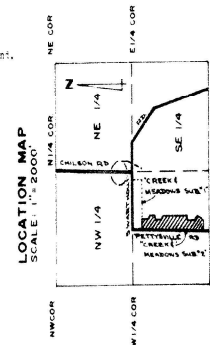
That the accuracy of the survey is within the limits required by Section 126 of the Act.

That the bearings shown on the plat are expressed as required by Section 126 (2) of the Act and as explained in the legend.

Date: April 10, 1972

Ross Engineering Company  
200 N. Grand River  
Liveston, Michigan 48043

*Gary R. Ross*  
Gary R. Ross, P.E. #17007  
Practitioner



### PLAT LEGEND

All dimensions are shown in feet.

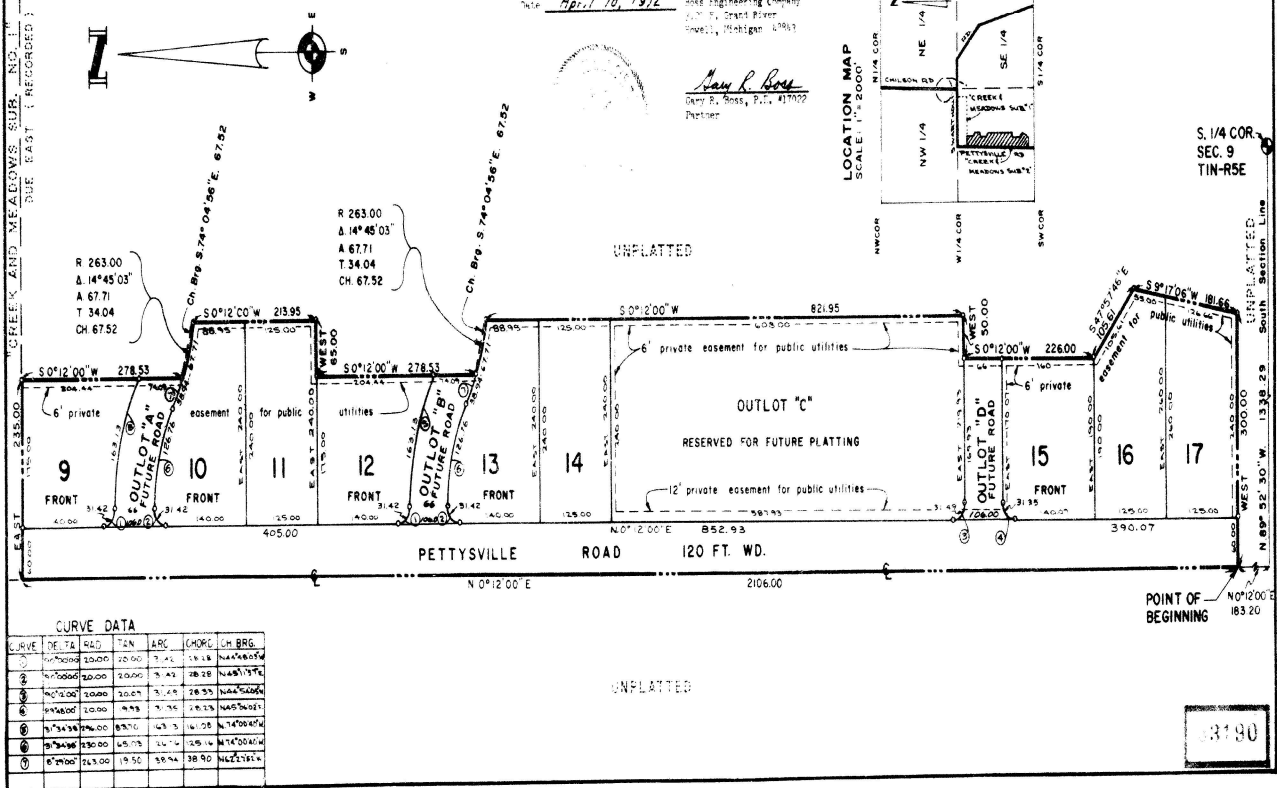
All curvilinear dimensions are shown along the arc or chord.

All bearings are in relation to "Creek and Meadows Sub. No. 2" as recorded in Liber 13 page 11.

The symbol "C" indicates a concrete monument.

All lot markers are 1/2 inch iron rods and are 18 inches in length.

CREEK AND MEADOWS SUB. NO. 2 LIBER 13 PAGE 11



CURVE	BE TO	QAD	TEN	ARC	CHORD	CH. BEG.
1	0° 12' 00" W	20.00	20.00	7.45	19.18	N 89° 42' 30" W
2	0° 12' 00" W	20.00	20.00	7.45	19.18	N 89° 42' 30" W
3	0° 12' 00" W	20.00	20.00	7.45	19.18	N 89° 42' 30" W
4	0° 12' 00" W	20.00	20.00	7.45	19.18	N 89° 42' 30" W
5	0° 12' 00" W	20.00	20.00	7.45	19.18	N 89° 42' 30" W
6	0° 12' 00" W	20.00	20.00	7.45	19.18	N 89° 42' 30" W
7	0° 12' 00" W	20.00	20.00	7.45	19.18	N 89° 42' 30" W
8	0° 12' 00" W	20.00	20.00	7.45	19.18	N 89° 42' 30" W
9	0° 12' 00" W	20.00	20.00	7.45	19.18	N 89° 42' 30" W
10	0° 12' 00" W	20.00	20.00	7.45	19.18	N 89° 42' 30" W
11	0° 12' 00" W	20.00	20.00	7.45	19.18	N 89° 42' 30" W
12	0° 12' 00" W	20.00	20.00	7.45	19.18	N 89° 42' 30" W
13	0° 12' 00" W	20.00	20.00	7.45	19.18	N 89° 42' 30" W
14	0° 12' 00" W	20.00	20.00	7.45	19.18	N 89° 42' 30" W
15	0° 12' 00" W	20.00	20.00	7.45	19.18	N 89° 42' 30" W
16	0° 12' 00" W	20.00	20.00	7.45	19.18	N 89° 42' 30" W
17	0° 12' 00" W	20.00	20.00	7.45	19.18	N 89° 42' 30" W

3180

PLAT Name

# CREEK AND MEADOWS SUBDIVISION NO. 2

PLATS-Number

PLATS-39979

Last LARA Update

1/14/2019

tif Number

5319002.tif

tif Size

157.09 KB

tif file

LIBER \_\_\_\_\_, PAGE \_\_\_\_\_

## "CREEK & MEADOWS SUBDIVISION NO. 2"

A SUBDIVISION OF PART OF THE S.W. 1/4 OF SECTION 9, T1N-R5E,  
HAMBURG TOWNSHIP, LIVINGSTON COUNTY, MICHIGAN

SHEET TWO  
OF  
TWO SHEETS

### PROPRIETOR'S CERTIFICATE

We, as proprietors, certify that we caused the land embraced in this plat to be surveyed, divided, mapped, and dedicated as represented on this plat and that the streets and roads are for the use of the public, that the public utility easements are private easements and that all other easements are for the uses shown on the plat, and Outlots A, B, and D are for future road purposes and Outlot C is reserved for future platting as shown on the plat.

Duane E. Bethke  
Witness Duane E. Bethke

Leon H. Leutz & Lorraine M. Leutz  
Leon H. Leutz and  
Lorraine M. Leutz (his wife)  
9716 W. Beverly Court  
Lakeland, Michigan 48143

Audrey J. Bethke  
Witness Audrey J. Bethke

Joseph E. Horste & Violet M. Horste  
Joseph E. Horste and  
Violet M. Horste (his wife)  
16535 Savage Road  
Belleville, Michigan 48111

### ACKNOWLEDGEMENT

State of Michigan)  
Livingston County)

Personally, came before me this 22nd day of April 1972 the above named Leon H. Leutz and Lorraine M. Leutz (his wife); and Joseph E. Horste and Violet M. Horste (his wife) to me known to be the persons who executed the foregoing instrument and acknowledged that they executed the same as their free act and deed.

Notary Public James F. Boyd Livingston County, Michigan.

My Commission expires May 14, 1973.

### COUNTY TREASURER'S CERTIFICATE

The records in my office show no unpaid taxes or special assessments for the five (5) years preceeding May 15, 1972 involving the lands included in this plat.

Dorothea J. Greer  
Dorothea J. Greer, County Treasurer  
Livingston County

### COUNTY DRAIN COMMISSIONER'S CERTIFICATE

Approved on May 16, 1972 as complying with Section 192 of Act 286, P.A. 1967 and the applicable rules and regulations, published by my office in the County of Livingston.

Clair W. Miller  
Clair W. Miller, Drain Commissioner  
Livingston County

### CERTIFICATE OF BOARD OF COUNTY ROAD COMMISSIONERS

Approved on June 9, 1972 as complying with Section 183 of Act 288, P.A. 1967, and the applicable published rules and regulations of the Board of Road Commissioners of Livingston County.

Melvin L. Simon  
Melvin L. Simon

Ronald Stubble  
Ronald Stubble

James W. Featherly  
James W. Featherly

### CERTIFICATE OF MUNICIPAL APPROVAL

I certify that this plat was approved by the Township Board of the Township of Hamburg at a meeting held, June 22, 1972 and was reviewed and found to be in compliance with Act 286, P.A. 1967, also adequate surety has been deposited with the clerk for the placing of monuments and markers within a reasonable length of time, not to exceed one (1) year from the above date. Preliminary approval by Livingston County Health Department June 19, 1972.

Henry M. Gass  
Henry M. Gass  
Hamburg Township Clerk

### COUNTY PLAT BOARD CERTIFICATE

This plat has been reviewed and is approved by the Livingston County Plat Board on July 12th 1972, as being in compliance with all of the provisions of Act 286, P.A. 1967, and the Plat Board's applicable rules and regulations.

Certified true copy of recorded plat.

ALLISON GREEN  
STATE TREASURER  
Richard L. Roman  
Deputy State Treasurer  
Sept. 12, 1972

Clarence Blackburn  
Clarence Blackburn, Register of Deeds

Joseph H. Ellis  
Joseph H. Ellis, County Clerk

Dorothea J. Greer  
Dorothea J. Greer, County Treasurer

### RECORDING CERTIFICATE

State of Michigan)  
Livingston County)

This plat was received for record on the first day of Sept A.D., 1972 at 4:30 P.M. o'clock and is recorded in Liber 151 of Plate on Pages 31-32.

Clarence Blackburn  
Clarence Blackburn, Register of Deeds  
161

53190