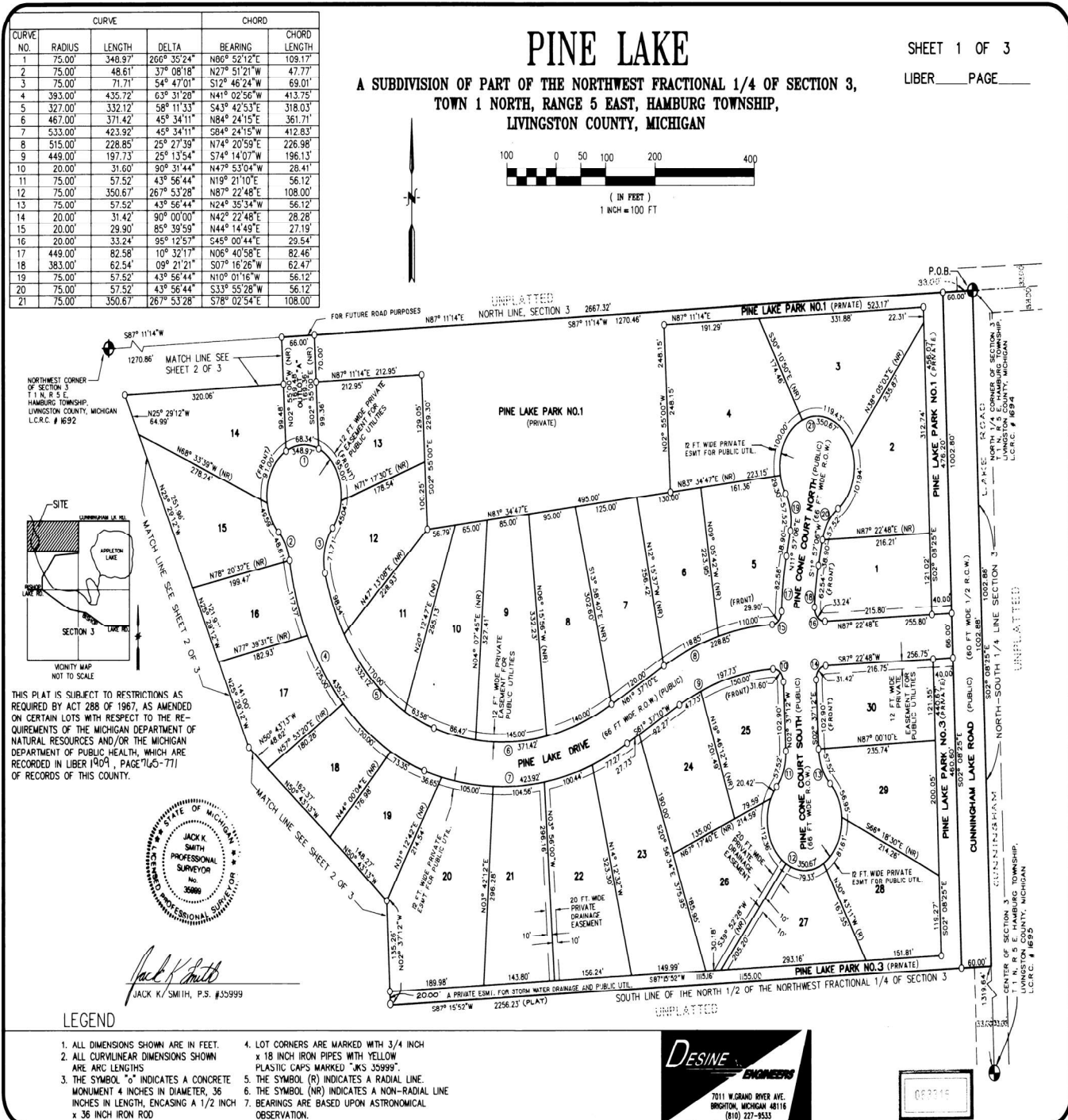


## PINE LAKE

236.41 kb

**tif file**



PLAT Name

PINE LAKE

PLATS-Number

PLATS-53253

Last LARA Update

1/15/2019

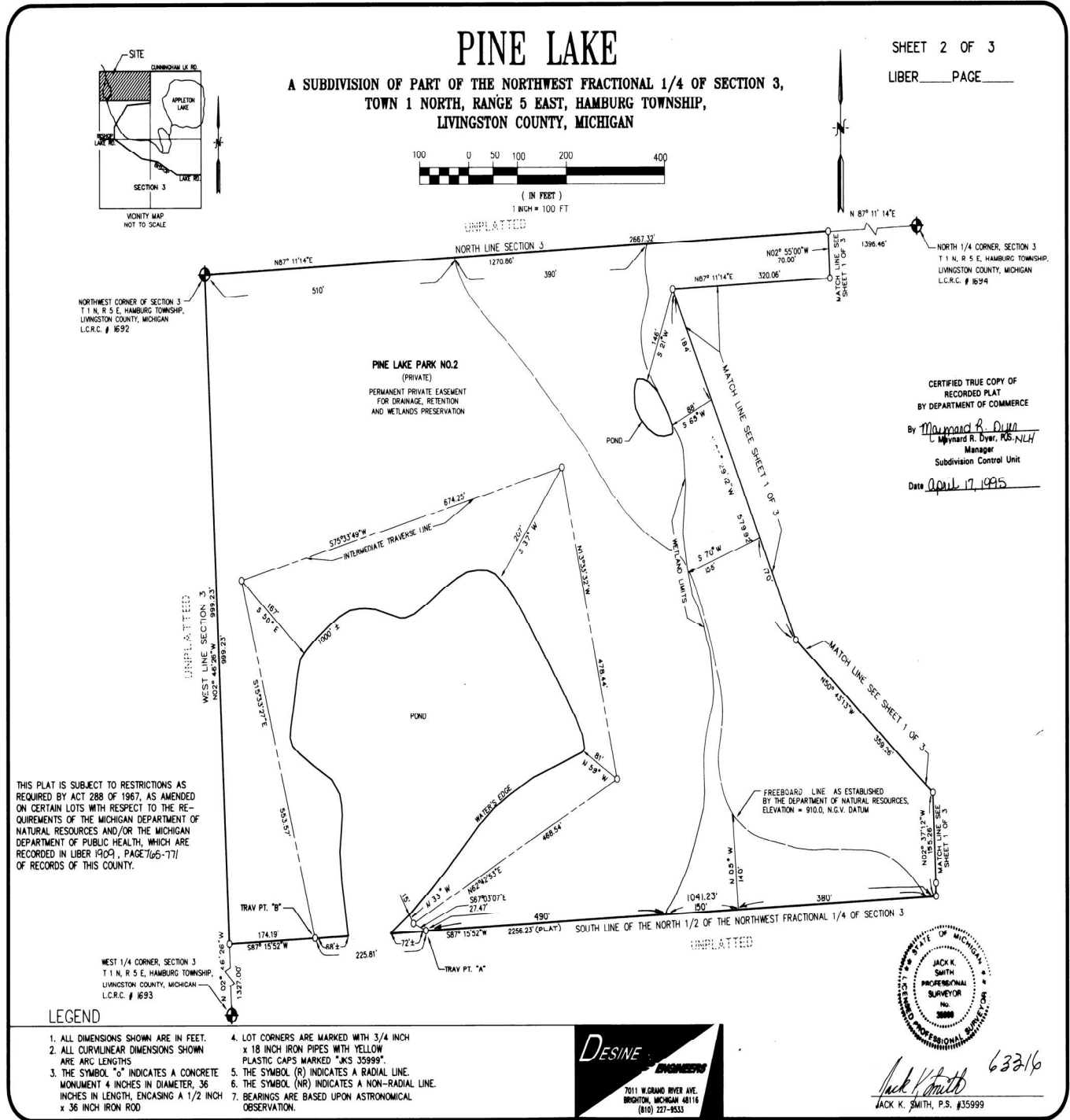
tif Number

6331602.TIF

tif Size

126.48 kb

tif file



PLAT Name

PINE LAKE

PLATS-Number

PLATS-53253

Last LARA Update

1/15/2019

tif Number

6331603.TIF

tif Size

203.90 kb

tif file

# PINE LAKE

A SUBDIVISION OF PART OF THE NORTHWEST FRACTIONAL 1/4 OF SECTION 3,  
TOWN 1 NORTH, RANGE 5 EAST, HAMBURG TOWNSHIP,  
LIVINGSTON COUNTY, MICHIGAN

SHEET 3 OF 3

LIBER PAGE

## SURVEYOR'S CERTIFICATE

I, Jack K. Smith, surveyor, certify:

That I have surveyed, divided and mapped the land shown on this plat, described as follows:

"PINE LAKE", a subdivision of part of the Northwest fractional 1/4 of Section 3, Town 1 North, Range 5 East, Hamburg Township, Livingston County, Michigan.

BEGINNING at the North 1/4 Corner of Section 3, T1N, R5E, Hamburg Township, Livingston County, Michigan; thence S02°08'25"E 1002.88 feet along the North-South 1/4 line of said section and the centerline of Cunningham Lake Road; thence S87°15'52"W 2256.23 feet along the South line of the North 1/2 of the Northwest fractional 1/4 of said section to "Point A", a point on an intermediate traverse line; thence continuing S87°15'52"W 72 feet, more or less to the water's edge of an unnamed pond; thence 1000 feet more or less along said water's edge in a counterclockwise direction to a point on said South line of the North 1/2 of the Northwest fractional 1/4 of said section; thence S87°15'52"W 68 feet more or less along said South line to "Point B", a point on said intermediate traverse line which bears the following 5 (five) courses distant from said "Point A": N67°03'07"W 27.47 feet, N62°42'53"E 466.54 feet, N33°33'32"W 478.44 feet, S72°33'49"W 674.25 feet, and S15°33'27"E 553.57 feet; thence S87°15'52"W 133 feet along said South line; thence N32°44'25"W 222.23 feet along the West line of said section; thence N67°14'E 1007.30 feet along the North line of said section to the Place of Beginning, Containing 57 Acres, of land, more or less.

Containing 30 lots numbered 1 through 30, inclusive, 3 Private Parks, and 1 Outlot.

That I have made such survey, land-division and plat by the direction of the owners of such land.

That such plat is a correct representation of all the exterior boundaries of the land surveyed and the subdivision of it.

That the required monuments and lot markers have been located in the ground or that surety has been deposited with the municipality, as required by Section 125 of the Act.

That the accuracy of survey is within the limits required by Section 126 of the Act.

That the bearings shown on the plat are expressed as required by Section 126(3) of the Act and as explained in the legend.

DESINE, INC.  
7011 WEST GRAND RIVER  
BRIGHTON, MICHIGAN 48116

Jack K. Smith  
Professional Surveyor  
Michigan No. 35999

Date: 11/17/1994

Wayne M. Perry  
President  
Professional Engineer  
Michigan No. 34036  
Date: 11/17/94



## PROPRIETOR'S CERTIFICATE

Corrigan-Davis, Inc., a corporation duly organized and existing under the laws of the State of Michigan by, Stephen M. Davis, President, and Fredrick B. Corrigan, Vice President, as Proprietors, have caused the land to be surveyed, divided, mapped and dedicated as represented on this plat and that the roads are for the use of the public and that "Pine Lake Park No.1", "Pine Lake Park No.2" and "Pine Lake Park No.3" are private parks for the use of the lot owners of this subdivision; that Outlot "A" is for future road purposes; and that the public utility easements are private easements and that all other easements are for the uses shown on the plat, and that "Pine Lake Park No.2" extends to the water's edge, and that park lots embracing waters of the unnamed pond and stream are subject to the correlative rights of other riparian owners and the public trust in these waters.

WITNESSES:

Lori J. Kennedy  
Lori J. Kennedy

John C. Haas III  
John C. Haas III

CORRIGAN-JAVIS, INC.  
P.O. Box 468  
Brighton, Michigan 48116  
Stephen M. Davis, President

Fredrick B. Corrigan  
Fredrick B. Corrigan, Vice President

## ACKNOWLEDGEMENT

STATE OF MICHIGAN }  
LIVINGSTON COUNTY } S.S.

Personally came before me this 17<sup>th</sup> day of Nov., 1994, Stephen M. Davis, President, and Fredrick B. Corrigan, Vice President of the above named corporation, to me known to be the persons who executed the foregoing instrument, and to me known to be such president and vice president of said corporation, and acknowledged that they executed the foregoing instrument as such officers as the free act and deed of said corporation, by its authority.

3/12/97  
My commission expires:

Lori J. Kennedy  
Lori Kennedy, Notary Public  
Washtenaw County, Michigan  
acting in Livingston County, Michigan

## COUNTY TREASURER'S CERTIFICATE

The records in my office show no unpaid taxes or special assessments for the five years preceding November 14, 1994, involving the lands included in this plat.

Dianne H. Hardy  
County Treasurer  
Livingston County

## COUNTY DRAIN COMMISSIONER'S CERTIFICATE

Approved on November 29, 1994, as complying with Section 192 of Act 288, P.A. 1967 and the applicable rules and regulations published by my office in the County of Livingston.

Richard A. Rudnicki  
Drain Commissioner  
Livingston County

## CERTIFICATE OF COUNTY ROAD COMMISSIONERS

Approved on December 8, 1994, as complying with Section 183 of Act 288, P.A. 1967 and the applicable published rules and regulations of the Board of Road Commissioners of Livingston County.

J. Gordon Topping, Vice-Chairman  
John T. Dunleavy, Member  
Richard L. Slayton, Chairman

## CERTIFICATE OF MUNICIPAL APPROVAL

I certify that this plat was approved by the Township Board of the Township of Hamburg at a meeting held Jan. 23, 1995, and was reviewed and found to be in compliance with Act 288, P.A. 1967; that approval of the Preliminary Plat was given by the Livingston County Health Department on October 1, 1993, and that adequate surety for placement of lot irons and monuments for a period not to exceed one year has been deposited with the Township.

Diane G. Wroblewski, D.E.H. Agency  
Diane G. Wroblewski, Hamburg Township Clerk

## COUNTY PLAT BOARD CERTIFICATE

This plat has been reviewed and is approved by the Livingston County Plat Board on January 23, 1995, as being in compliance with all of the provisions of Act 288, P.A. 1967, and the Plat Board's applicable rules and regulations.

Dianne H. Hardy  
Dianne H. Hardy  
County Treasurer  
Nancy N. Haviland  
Nancy N. Haviland  
Register of Deeds  
David E. Tegardine  
David E. Tegardine  
County Clerk

## RECORDING CERTIFICATE

STATE OF MICHIGAN }  
LIVINGSTON COUNTY }

This plat was received for record on the 17th day of March, 1995, A.D. at 12:30 P.M. and recorded in Liber 89 of Plots, Pages 33-35.  
Nancy N. Haviland  
Nancy N. Haviland, Register of Deeds

63316