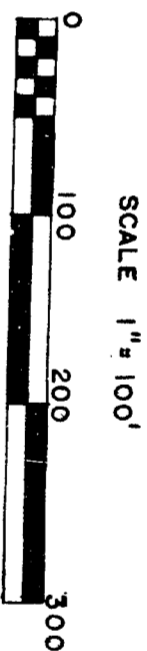


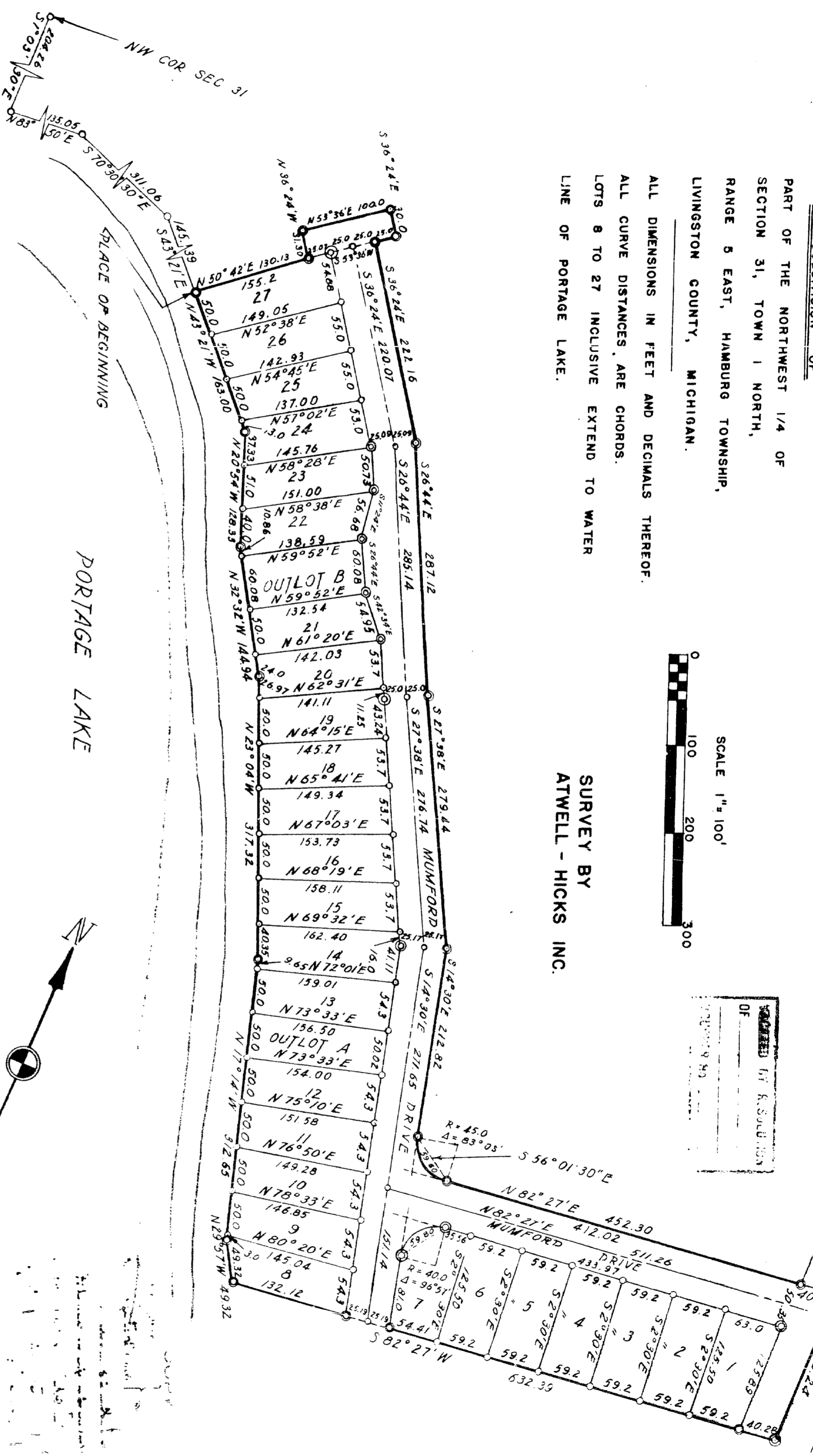
# PLAT OF "MUMFORD PARK"

A SUBDIVISION OF  
PART OF THE NORTHWEST 1/4 OF  
SECTION 31, TOWN 1 NORTH,  
RANGE 5 EAST, HAMBURG TOWNSHIP,  
LIVINGSTON COUNTY, MICHIGAN.

ALL DIMENSIONS IN FEET AND DECIMALS THEREOF.  
ALL CURVE DISTANCES ARE CHORDS.  
LOTS 8 TO 27 INCLUSIVE EXTEND TO WATER  
LINE OF PORTAGE LAKE.



SURVEY BY  
ATWELL - HICKS INC.



### DEDICATION

KNOW ALL MEN BY THESE PRESENTS that Rogers and Cotton Company, a Co-Partner and composed of Donald G. Rogers and George A. Cotton as proprietor has caused the land embraced in the annexed plat to be surveyed, laid out and platted, to be known as Mumford Park, A Subdivision of part of the northwest 1/4 of Section 31, Town 1 North, Range 5 East, Hamburg Township, Livingston County, Michigan, and that Drive and Road as shown on said plat are hereby dedicated to the use of the public.

Signed and Sealed  
In the Presence of:

Rogers and Cotton Company  
by *Donald G. Rogers* (L.S.)  
*Donald G. Rogers* Co-Partner  
*George A. Cotton* (L.S.)  
*George A. Cotton* Co-Partner

### ACKNOWLEDGMENT

STATE OF MICHIGAN } ss.  
County of Washtenaw }

On this 19th day of November, A.D. 1952 before me Evangelina P. Hicks a Notary Public in and for said county appeared Donald G. Rogers and George A. Cotton to me personally known, who being each by me duly sworn did say that they are co-partners of Rogers and Cotton Company, a Co-partnership and that said instrument was signed in behalf of said co-partnership and acknowledged said instrument to be the free act and deed of said co-partnership.

### APPROVAL BY BOARD OF COUNTY ROAD COMMISSIONERS

This plat has been examined and was approved on the 19th day of November, 1952 by the County Board of Road Commissioners.

*Melvin Hibern* (Chairman)  
*Frederick F. Crendall* (Commissioner)  
*Frederick F. Crendall* (Commissioner)  
*Ross J. Robb* (Commissioner)

### DESCRIPTION OF LAND PLATED

The land embraced in the annexed plat of Mumford Park a Subdivision of part of the northwest 1/4 of Section 31, Town 1 North, Range 5 East, Hamburg Township, Livingston County, Michigan is described as follows:

Commencing at the northwest corner of Section 31 of Town 1 North, Range 5 East, Hamburg Township, Livingston County, Michigan, and running thence south 1°-03'-30" east in the range line 204.26 feet; thence north 3°-50'-00" east 135.05 feet; thence south 7°-30'-30" east 311.06 feet; thence south 43°-21'-00" east 145.39 feet for a PLACE OF BEGINNING; thence north 5°-42'-00" east 130.13 feet; thence north 24'-00" west 31.30 feet; thence north 53°-46'-00" east 100.00 feet; thence south 38°-24'-00" east 30.00 feet; thence south 53°-36'-00" west 25.00 feet; thence south 36°-24'-00" east 222.16 feet; thence south 28°-44'-00" east 287.12 feet; thence south 27°-38'-00" east 279.44 feet; thence south 14°-30'-30" east 212.82 feet; thence in the arc of a circular curve to the left with a radius of 450 feet, the chord of which bears south 53°-01'-30" east 59.60 feet; thence north 82°-27'-00" east 452.30 feet; thence south 0°-46'-00" east in the center line of McGregor Road 176.24 feet; thence south 82°-27'-00" west 632.18 feet; thence north 29°-57'-00" east 49.32 feet; thence north 17°-14'-00" west 312.80 feet; thence north 23°-04'-00" west 317.32 feet; thence north 32°-00" west 144.94 feet; thence north 20°-54'-00" west 128.38 feet; thence north 43°-21'-00" west 163.00 feet to the place of beginning, being part of the northwest 1/4 of Section 31, Town 1 North, Range 5 East, Hamburg Township, Livingston County, Michigan.

### COUNTY TREASURER'S CERTIFICATE

Office of County Treasurer Livingston County

I hereby certify, that there are no tax liens or titles held by the State on the lands described hereon, and that there are no tax liens or titles held by individuals on said lands, for the five years preceding the 1952 and that the taxes for said period of five years are all paid as shown by the records of this office.

Jennie M. Eastman (County Treasurer)

### APPROVAL BY COUNTY PLAT BOARD

This plat was approved on the 19th day of November, 1952

*Frank D. Bush* (County Register of Deeds)  
*William M. Eastman* (County Treasurer)  
*John A. Hartman* (County Clerk)  
*Floyd W. Mansell* (County Inland Commissioner)

### SURVEYOR'S CERTIFICATE

I hereby certify that the plat herein delineated is a correct one and that permanent metal monuments consisting of bars not less than one-half inch in diameter and 48 inches in length, or shorter bars of not less than one-half inch in diameter lapped over each other at least 6 inches with an over-all length of not less than 48 inches, enclosed in a concrete cylinder at least 4 inches in diameter and 48 inches in depth have been placed at points marked thus (.....) as thereon shown at all angles in the boundaries of the land platted, at all the intersections of streets, intersections of alleys or of streets and alleys, and at the intersections of streets and alleys with the boundaries of the plat as shown on said plat.

Herbert S. Hicks  
No. 1715  
Registered Professional Engineer  
and Surveyor

### MUNICIPAL APPROVAL

This plat was approved by the Township Board of the Township of Hamburg at a meeting held on the 19th day of November, 1952.

*Dane Ann Bennett* (Clerk)

*Melvin Hibern* (Chairman)  
*Frederick F. Crendall* (Commissioner)  
*Frederick F. Crendall* (Commissioner)  
*Ross J. Robb* (Commissioner)

*Jennie M. Eastman* (County Treasurer)

*Frank D. Bush* (County Register of Deeds)  
*William M. Eastman* (County Treasurer)  
*John A. Hartman* (County Clerk)  
*Floyd W. Mansell* (County Inland Commissioner)

*Herbert S. Hicks* (Registered Professional Engineer and Surveyor)

*Dane Ann Bennett* (Clerk)