

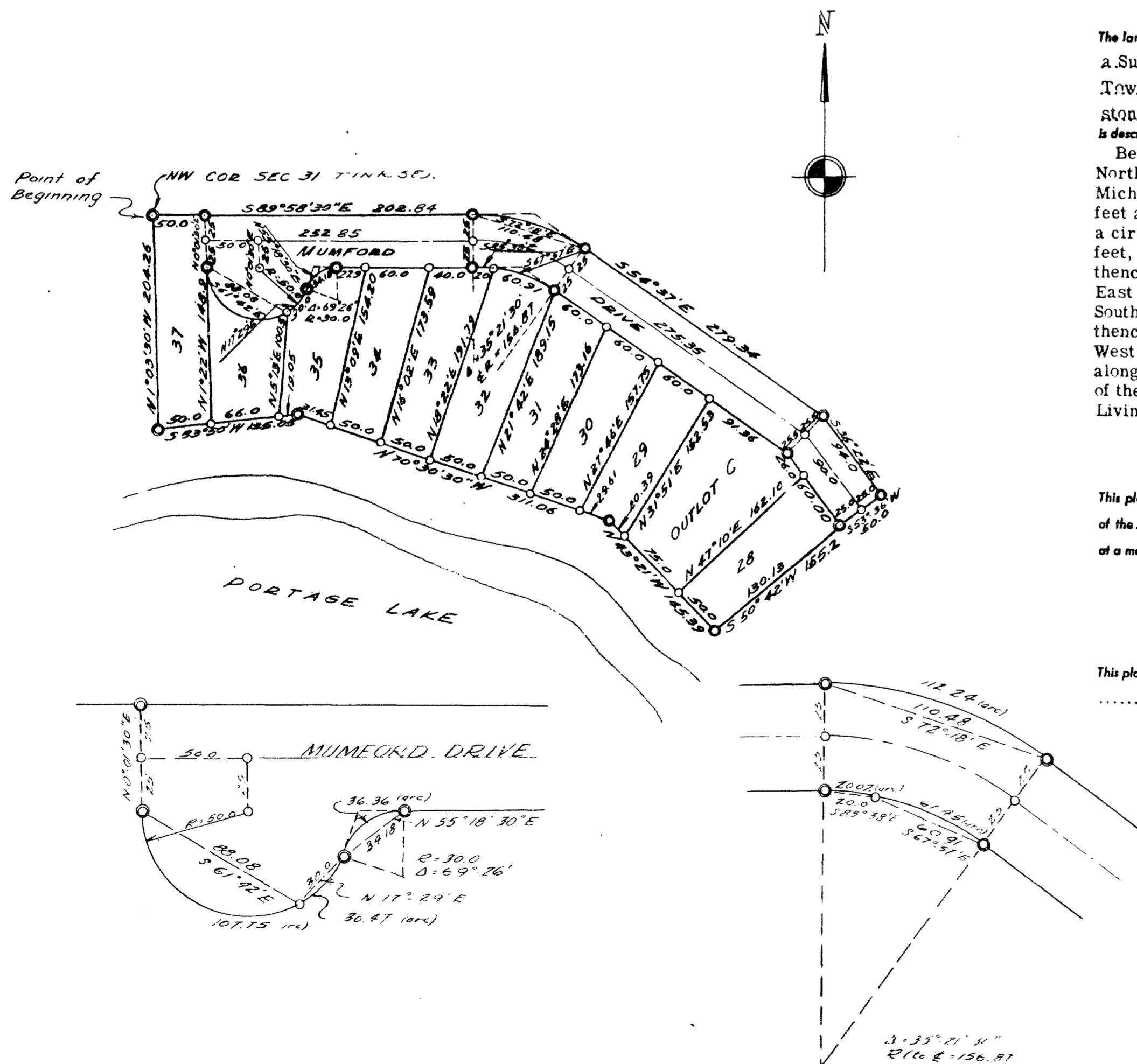
PLAT OF "MUMFORD PARK NUMBER TWO"

A SUBDIVISION OF
PART OF THE NORTHWEST 1/4 OF
SECTION 31, TOWN 1 NORTH,
RANGE 5 EAST, HAMBURG TOWNSHIP,
LIVINGSTON COUNTY, MICHIGAN.



ALL DIMENSIONS IN FEET AND DECIMALS THEREOF
ALL CURVE DISTANCES ARE CHORDS
ALL LOTS EXTEND TO WATERLINE OF PORTAGE LAKE

SURVEY BY
ATWELL-HICKS INC.



DEDICATION

KNOW ALL MEN BY THESE PRESENTS, that we, Rogers and Cottom Company, a Co-Partnership composed of Donald G. Rogers and George A. Cottom

as proprietors, have caused the land embraced in the annexed plat to be surveyed, laid out and platted, to be known as "Mumford Park Number Two", A Subdivision of Part of the Northwest 1/4 of Section 31, Town 1 North, Range 5 East, Hamburg Township, Livingston County, Michigan,

and that the drive as shown on said plat are hereby dedicated to the use of the public

Signed and Sealed in the Presence of:
Mary E. Walter (Witness) *Mary E. Walter*
Donald G. Rogers (U.S.) *Donald G. Rogers*
George A. Cottom (U.S.) *George A. Cottom*
Jean E. Towner (Witness) *Jean E. Towner*

Rogers and Cottom Company
Rogers and Cottom Company

ACKNOWLEDGMENT

STATE OF MICHIGAN }
County of Washtenaw } ss.
On this 17th day of October 1952, before me, a Notary Public in and for said County, personally came the above named Donald G. Rogers and George A. Cottom to me personally known who by each by me duly sworn did say that they are co-partners of Rogers and Cottom Company, a Co-Partnership, and that said instrument was signed in behalf of said co-partnership and acknowledged said instrument to be the free act and deed of said co-partnership

C. J. Towner
Notary Public, Washtenaw County
My Commission expires Aug 5/53

SURVEYOR'S CERTIFICATE

I hereby certify that the plat hereon delineated is a correct one and that permanent metal monuments consisting of bars not less than one-half inch in diameter and 48 inches in length, or shorter bars of not less than one-half inch in diameter lapped over each other at least 6 inches with an over-all length of not less than 48 inches, encased in a concrete cylinder at least 4 inches in diameter and 48 inches in depth have been placed at points marked thus (⊙) as thereon shown at all angles in the boundaries of the land platted, at all the intersections of streets, intersections of alleys, or of streets and alleys, and at the intersections of streets and alleys with the boundaries of the plat

Herbert S. Hicks
Registered Land Surveyor or Registered Professional Engineer
Herbert S. Hicks No. 1715

APPROVAL BY BOARD OF COUNTY ROAD COMMISSIONERS

This plat has been examined and was approved on the 18th day of October 1952 by the LIVINGSTON County Board of Road Commissioners

Melvin Hibner
Melvin Hibner (Chairman)
Tracy F. Crandall
Tracy F. Crandall, Commissioner
Ross J. Robb
Ross J. Robb, Commissioner

COUNTY TREASURER'S CERTIFICATE

Office of County Treasurer, Livingston County.
I hereby certify, that there are no tax liens or titles held by the State on the lands described hereon, and that there are no tax liens or titles held by individuals on said lands, for the five years preceding the 13th day of October 1952, and that the taxes for said period of five years are all paid, as shown by the records of this office

This certificate does not apply to taxes, if any, now in process of collection by township, city or village collecting officers.

Jennie M. Eastman
Jennie M. Eastman (County Treasurer)

DESCRIPTION OF LAND PLATTED

The land embraced in the annexed plat of "Mumford Park Number Two," a Subdivision of Part of the Northwest 1/4 of Section 31, Town 1 North, Range 5 East, Hamburg Township, Livingston County, Michigan, is described as follows:

Beginning at the Northwest corner of Section 31, Town 1 North, Range 5 East, Hamburg Township, Livingston County Michigan and running thence South 89°-58'-30" East 202.84 feet along the North line of the section, thence in the arc of a circular curve concave to the South with radius of 181.87 feet, the chord of which bears South 72°-18' East 110.48 feet thence South 54°-37' East 279.34 feet; thence South 36°-22' East 94.0 feet; thence South 53°-36' West 50.0 feet; thence South 50°-42' W. 155.2 feet; thence N. 43°-21' W. 145.39 feet thence North 70°-30'-30" W. 311.06 feet; thence South 83°-50' West 135.05 feet; thence North 1°-03'-30" West 204.26 feet along the range line to the PLACE OF BEGINNING; being part of the Northwest 1/4 of Section 31, Town 1 North, Range 5 East Livingston County, Michigan.

MUNICIPAL APPROVAL

This plat was approved by the Township Board of the Hamburg Township of Hamburg at a meeting held on 08 13, 1952

Jane Ann Bennett
Jane Ann Bennett (Clerk)

APPROVAL BY COUNTY PLAT BOARD

This plat was approved on the 20th day of October 1952

Frank D. Bush
Frank D. Bush (County Register of Deeds)
John A. Hagman
John A. Hagman (County Clerk)
Jennie M. Eastman
Jennie M. Eastman (County Treasurer)
Floyd W. Munsell
Floyd W. Munsell (County Drain Commissioner)

Handwritten notes and signatures in the bottom right corner, including names like 'Frank D. Bush' and 'John A. Hagman'.