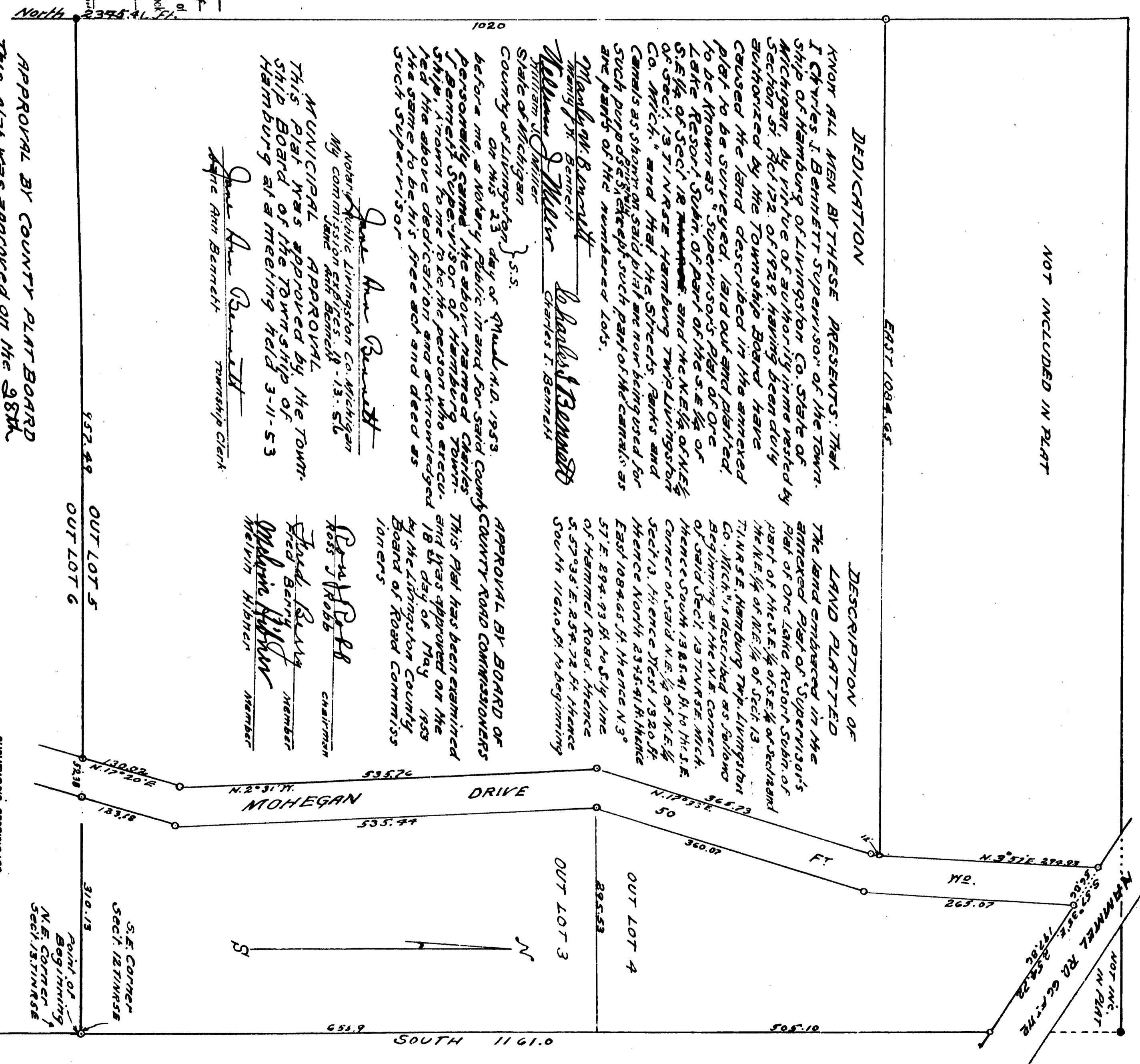


"SUPERVISOR'S PLAT OF DRE LAKE RESORT SUBV. OF PART OF THE S.E. 1/4 OF SE. 1/4 OF SECT. 12 AND THE N.E. 1/4 OF N.E. 1/4 OF SECT. 13

T.I.N.R.S.E. HAMBURG TWP.
LIVINGSTON CO. MICH.

SCALE 1" = 100'
All dimensions are given in feet and decimals thereof



NOT INCLUDED IN PLAT

DEDICATION

I KNOW ALL MEN BY THESE PRESENTS: That I Charles J. Bennett Supervisor of the Town of Hamburg of Livingston Co. State of Michigan; by virtue of authority lawfully conferred on me by the Township Board have caused the land described in the annexed plat to be surveyed, laid out and divided to be known as Supervisor's Plat of One Lake Resort Subv. of part of the S.E. 1/4 of Sec. 12 and the N.E. 1/4 of Sec. 13 T.I.N.R.S.E. Hamburg Twp. Livingston Co. Mich., and that the Streets, Parks and Canals as shown on said plat are now being used for such purposes, except such part of the Canals as are parts of the numbered lots.

Charles J. Bennett
Supervisor of Hamburg
Livingston Co. Michigan

APPROVAL BY BOARD OF COUNTY ROAD COMMISSIONERS
This Plat has been examined and was approved on the 18th day of May 1953 by the Livingston County Board of Road Commissioners

APPROVAL BY TOWNSHIP BOARD
This Plat was approved by the Township Board of the Township of Hamburg at a meeting held 3-11-53

APPROVAL BY COUNTY PLAT BOARD
This Plat was approved on the 28th day of May 1953.

SURVEYOR'S CERTIFICATE

I hereby certify that the plat hereon delineated is a correct one and that permanent metal monument consisting of bars not less than one-half inch in diameter and 48 inches in length, or shorter bars of not less than one-half inch in diameter lapped over each other at least 6 inches with an over-all length of not less than 48 inches, encased in a concrete cylinder of least 4 inches in diameter and 48 inches in depth have been placed at points marked thus (.....) on the corners of all angles in the boundaries of the land plotted, at all the intersections of streets, intersections of alleys, or of streets and alleys, and at the intersections of streets and alleys with the boundaries of the plat as shown on said plat.

William J. Miller
Registered Land Surveyor (or Professional Engineer)

COPY
Part of Livingston County Plat was recorded this _____ day of _____ A.D. 1953 at _____ o'clock P.M. in Liber _____ of Plats in Record's Office

I hereby certify that this copy is a true copy of the map or plat forwarded the Recorder of Deeds for recording.
Date March 1953
Filed in _____ Co. of _____ State
Date June 12, 1953
Examined and Approved
Date June 4, 1953

Frank D. Bush Co. Registrar of Deeds
John W. Hagman Co. Clerk
James M. Eastman Co. Treasurer
Frank W. Hummel Co. Drain Commissioner
Floyd W. Munsell Co. Drain Commissioner