

"MUMFORD PARK NUMBER FOUR"

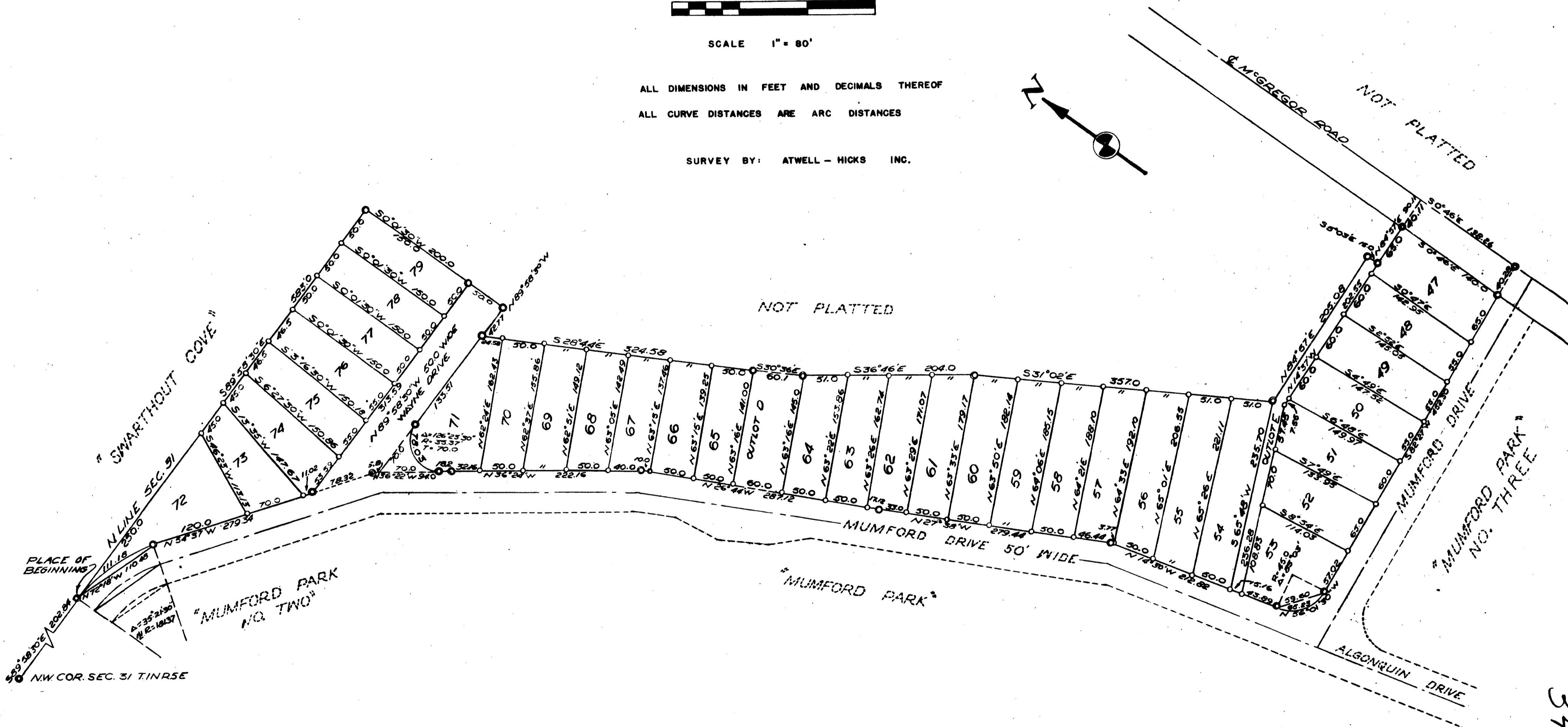
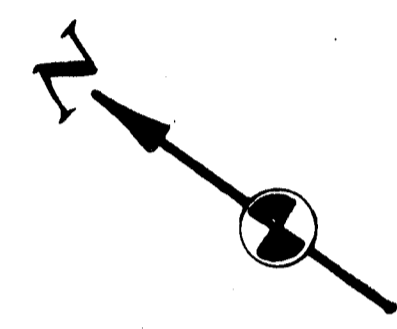
A SUBDIVISION OF PART OF THE
 NORTHWEST FRACTIONAL 1/4 OF
 SECTION 31, TOWN 1 NORTH,
 RANGE 5 EAST, HAMBURG TOWNSHIP,
 LIVINGSTON COUNTY, MICHIGAN.



SCALE 1" = 80'

ALL DIMENSIONS IN FEET AND DECIMALS THEREOF
 ALL CURVE DISTANCES ARE ARC DISTANCES

SURVEY BY: ATWELL - HICKS INC.



34083