

"ROBERT HERNDON'S ADDITION TO VISTA ON THE LAKE SUBDIVISION"

ORIGINAL

OF PART OF NORTH 1/2 OF SECTION 20, T1N-R5E HAMBURG TOWNSHIP LIVINGSTON COUNTY MICHIGAN

DEDICATION

KNOW ALL MEN BY THESE PRESENTS, that we, Robert Herndon and Della G. Herndon, Husband and wife

as proprietors, have caused the land embraced in the annexed plat to be surveyed, laid out and platted, to be known as Robert Herndon's Addition to Vista on the Lake Subdivision, of part of North 1/2 of Section 20, T1N, R5E, Hamburg Township, Livingston County, Michigan

and that the streets as shown on said plat have previously been dedicated.

Signed and Sealed in the Presence of:

Christina M. Law (Witness) Robert Herndon (I.S.)
Christine Johnson (Witness) Della G. Herndon (I.S.)

ACKNOWLEDGMENT

STATE OF MICHIGAN } ss.
County of Livingston }
On this 5th day of April 1957, before me, a Notary Public in and for said County, personally came the above named Robert Herndon and Della G. Herndon, Husband and wife.

known to me to be the persons who executed the above dedication, and acknowledged the same to be their free act and deed.

Harold L. Livingston
Notary Public, Livingston County
My Commission expires 7-7-57

APPROVAL BY BOARD OF COUNTY ROAD COMMISSIONERS

This plat has been examined and was approved on the 18th day of April 1957, by the Livingston County Board of Road Commissioners.

Fred Berry (Chairman)
Delbert W. Smith (Member)
Norman S. Topping (Member)

CERTIFICATE OF MUNICIPAL APPROVAL

This plat was approved by the Township Board of Hamburg at a meeting held April 11, 1957, and that the width of lots is in compliance with requirements of Section 30, Act 172, of 1929, as amended.

William V. Backlund
William Backlund Clerk

DESCRIPTION OF LAND PLATTED

The land embraced in the annexed plat of Robert Herndon's Addition to Vista on the Lake Subdivision of part of north 1/2 Section 20, T1N, R5E, Hamburg Township Livingston County, Michigan, a Replat of Outlot B of "VISTA ON THE LAKE".

Beginning at a point N89°48'45"E 1294.76 feet and S44°09'W 963.04 ft. from the N1/4 post of said sec. 20; Thence S44°09'W 756.3 ft., Thence N Wly 101.61 ft. along the arc of a curve right with a central angle of 44°48'20" and a radius of 130 ft., the long chord bears N23°26'50" W 99.09 ft., Thence N1°02'40" W 496.24 ft., Thence N88°59'20" E 443.22 ft., Thence S Wly. 145.76 ft., along the arc of a curve right with a central angle of 45°09'40" and a radius of 185 ft. the long chord bears S68°49'50" E 142.07 ft. to the point of beginning, containing 18 lots numbered 1 to 18 inclusive. All measurements in feet and decimals thereof.

APPROVAL BY COUNTY PLAT BOARD

This plat was approved on the 25th day of April 1957 by the Livingston County Plat Board

William L. Haack (County Register of Deeds)
John A. Hagman (County Clerk)
Jennie M. Eastman (County Treasurer)
Floyd W. Munsell (County Drain Commissioner)

COUNTY TREASURER'S CERTIFICATE

Office of County Treasurer, Livingston County.
I hereby certify that there are no tax liens or titles held by the State on the lands described hereon, and that there are no tax liens or titles held by individuals on said lands, for the five years preceding the 25th day of April 1957, and that the taxes for said period of five years are all paid, as shown by the records of this office.

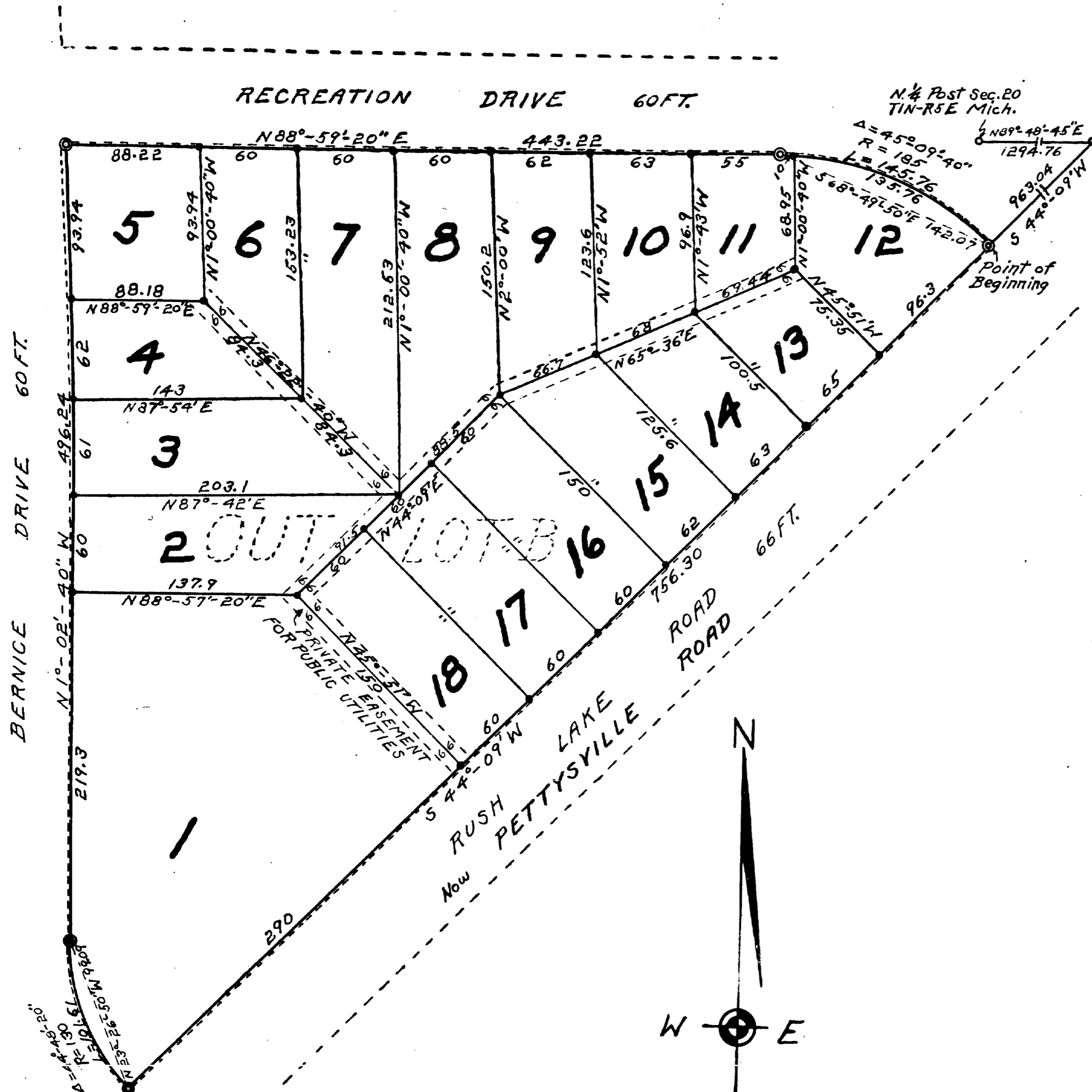
This certificate does not apply to taxes, if any, now in process of collection by township, city or village collecting officers.

Jennie M. Eastman (County Treasurer)

SURVEYOR'S CERTIFICATE

I hereby certify that the plat hereon delineated is a correct one and that permanent metal monuments consisting of bars not less than one-half inch in diameter and 36 inches in length, or shorter bars of not less than one-half inch in diameter lapped over each other at least 6 inches with an over-all length of not less than 36 inches, encased in a concrete cylinder of least 4 inches in diameter and 36 inches in depth have been placed at points marked thus (O) as thereon shown at all angles in the boundaries of the land platted, at all the intersections of streets, intersections of alleys, or of streets and alleys, and at the intersections of streets and alleys with the boundaries of the plat as shown on said plat.

Lyle W. Munsell
Registered Land Surveyor
Lyle W. Munsell No. 8316



COPY
Register's Office
Livingston County, ss.
Plat of Robert Herndon's Addition to Vista on the Lake Subdivision
was Replat this 7th day of May 1957, at 9:30 o'clock A.M. in Lib. 8 with Plat of age 35
William L. Haack
Register of Deeds

Date May 6, 1957
FILED
Date May 23, 1957
Date May 6, 1957
Auditor General
W. L. Mac Elroy

39370