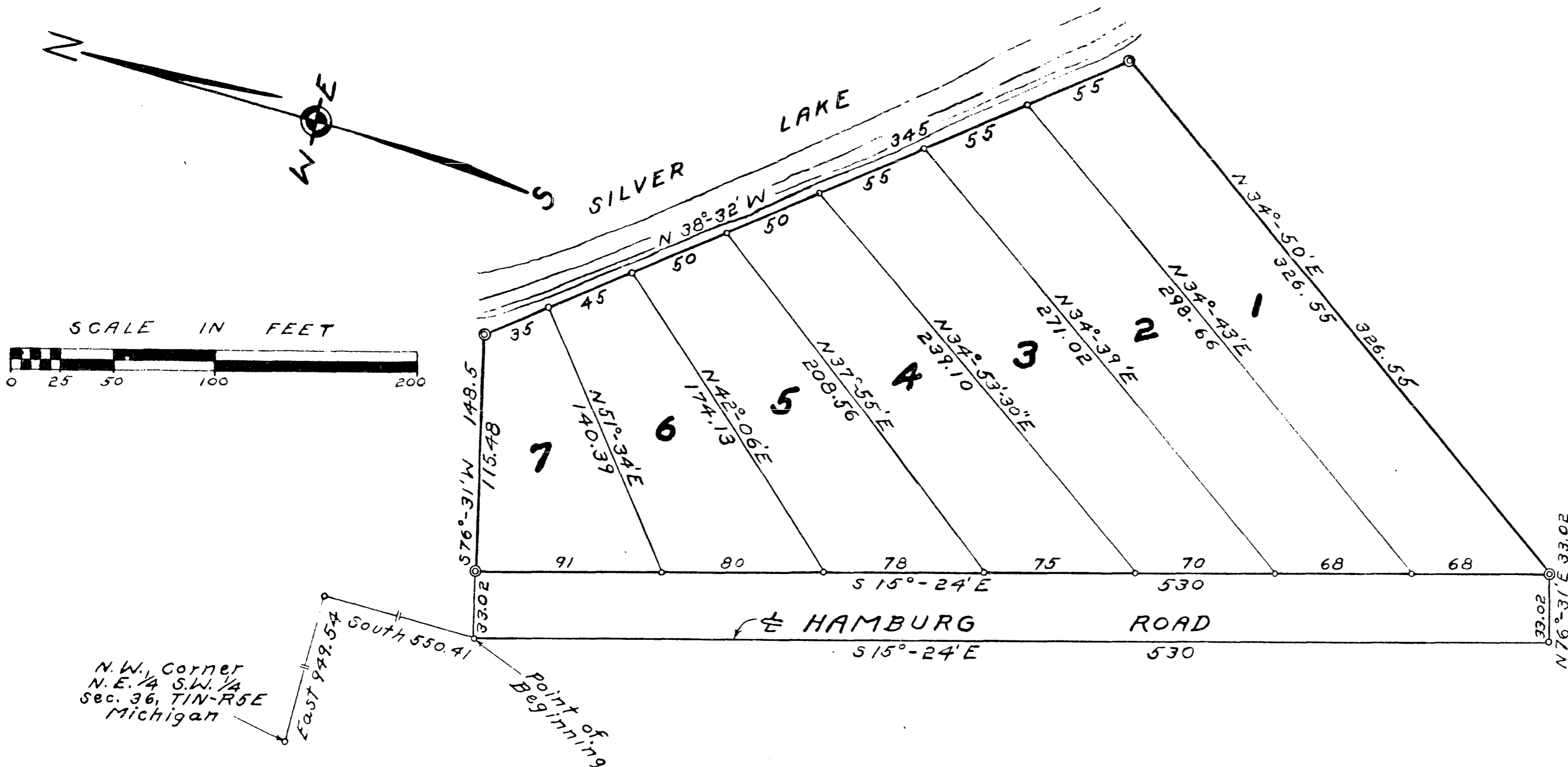


LAKE VIEW SHORES No. 1

A Subdivision of part of N.E. 1/4 of S.W. 1/4 Section 36
T1N-R5E Hamburg Township Livingston County Michigan



DEDICATION

KNOW ALL MEN BY THESE PRESENTS, that we
Walter Zink and Lillian E. Zink, husband and wife
as proprietors, have caused the land embraced in the annexed plat to be surveyed,
laid out and platted, to be known as... LAKE VIEW SHORES No. 1
A subdivision of part of N.E. 1/4 of S.W. 1/4 section 36, T1N-R5E,
Hamburg Township Livingston County Michigan
and that the streets and roads as shown on said plat are
herby dedicated to the use of the public

Signed and Sealed in
the Presence of:
Viola E. Tucker (Witness) Walter Zink (L.S.)
Walter Zink
Irene R. Daniels (Witness) Lillian E. Zink (L.S.)
Lillian E. Zink

ACKNOWLEDGMENT

STATE OF MICHIGAN }
County of Livingston } ss.
On this 14th day of November, 1958, before me,
a Notary Public in and for said County, personally came the above named
Walter Zink and Lillian E. Zink, husband and wife
known to me to be the persons who executed the above dedication, and acknowledged
the same to be their free act and deed.
Viola E. Tucker
Notary Public, Livingston County
My Commission expires June 8, 1959.

CERTIFICATE OF MUNICIPAL APPROVAL

This plat was approved by the Township Board
of the Township of Hamburg
at a meeting held on 11-13-58 and that the width of lots is in compliance
with requirements of Section 30, Act 172, of 1929, as amended.
William V. Backlund
Clerk.

COUNTY TREASURER'S CERTIFICATE

Office of County Treasurer, Livingston County.
I hereby certify, that there are no tax liens or titles held by the State on the lands described
hereon, and that there are no tax liens or titles held by individuals on said lands,
for the five years preceding the 14th day of November, 1958, and that the taxes for said period of
five years are all paid, as shown by the records of this office.
This certificate does not apply to taxes, if any, now in process of collection by township,
city or village collecting officers.
Dorothea J. Greer (County Treasurer)

SURVEYOR'S CERTIFICATE

I hereby certify that the plat hereon delineated is a correct one and that permanent metal
monuments consisting of bars not less than one-half inch in diameter and 36 inches in
length, or shorter bars of not less than one-half inch in diameter lapped over each other
at least 6 inches with an over-all length of not less than 36 inches, enclosed in a concrete
cylinder at least 4 inches in diameter and 36 inches in depth have been placed at points
marked thus (●) as thereon shown at all angles in the boundaries of the land platted, at
all the intersections of streets, intersections of alleys, or of streets and alleys, and at the
intersections of streets and alleys with the boundaries of the plat as shown on said plat.

Lyle W. Munsell
Registered Land Surveyor
Lyle W. Munsell No. 8316

APPROVAL BY BOARD OF COUNTY ROAD COMMISSIONERS

This plat has been examined and was approved on the 13th
day of November, 1958, by the Livingston
County Board of Road Commissioners.

Fred Berry (Chairman)
Norman S. Topping (Member)
Warren H. Andersen (Member)

APPROVAL BY COUNTY PLAT BOARD

This plat was approved on the 14th day of
November, 1958, by the Livingston
County Plat Board

William L. Haack (County Register of Deeds)
John A. Hagman (County Clerk)
Dorothea J. Greer (County Treasurer)
Floyd W. Munsell (County Train Commissioner)

DESCRIPTION OF LAND PLATTED

The land embraced in the annexed plat of LAKE VIEW SHORES No. 1
is a subdivision of part of N.E. 1/4 of S.W. 1/4 section 36,
T1N-R5E, Hamburg Township Livingston County Michigan

is described as follows: Beginning at a point 349.54 feet East
and 500.41 feet South of the North West corner of said
N.E. 1/4 of S.W. 1/4 section 36; thence S 15°-24' E 530 feet;
thence N 70°-31' E 33.02 feet; thence N 34°-50' E 326.55
feet; thence N 38°-32' W 345 feet; thence S 70°-31' E
148.5 feet to the point of beginning.

Containing 7 lots numbered 1 to 7 inclusive
All lots extend to the waters edge of Silver Lake
NOTE-all measurements are in feet and decimals thereof

COPY
Livingston County
December 14, 1958
William L. Haack
December 14, 1958
December 14, 1958
December 14, 1958