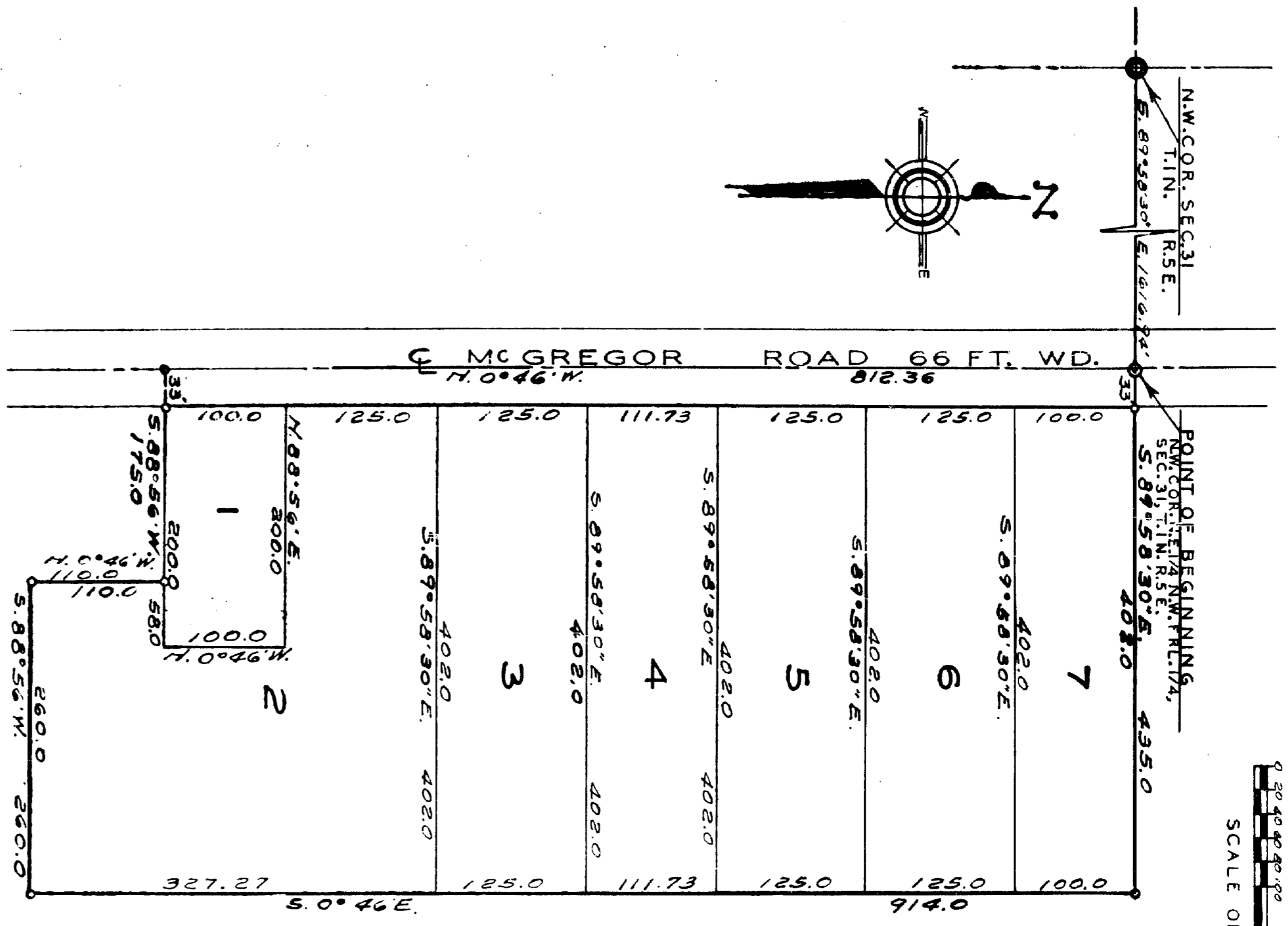
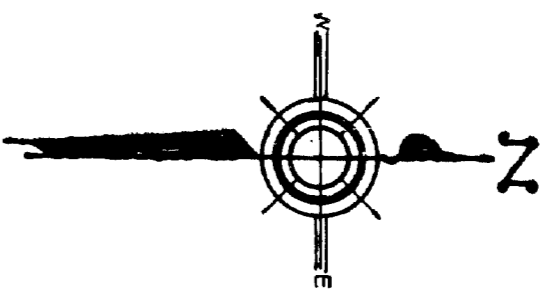
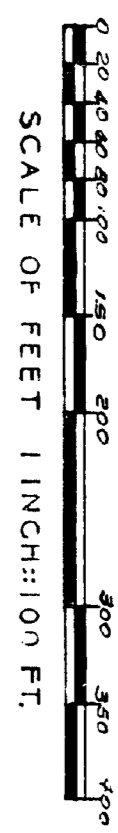


"NEWTON PLAINS"

A SUBDIVISION OF PART OF THE N.E. 1/4 OF THE N.W. 1/4, SEC. 31, T. 1 N. R. 5 E.
HAMBURG TWP. LIVINGSTON CO. MICH.



SURVEYOR'S CERTIFICATE

I hereby certify that the plot hereon delineated is a correct one and that permanent metal monuments consisting of bars not less than one-half inch in diameter and 36 inches in length, or shorter bars of not less than one-half inch in diameter lapped over each other of at least 6 inches with an over-all length of not less than 36 inches, enclosed in a concrete cylinder of least 4 inches in diameter and 36 inches in depth have been placed at points marked thus (O) at the corners shown or all angles in the boundaries of the land plotted, at all the intersections of streets, intersections of alleys, or of streets and alleys, and at the intersections of streets and alleys with the boundaries of the plot or shown on said plot.

CERTIFICATE OF MUNICIPAL APPROVAL

This plot was approved by the Board of Hamburg of the Township of Hamburg and that the width of lots conform with the requirements of Section 30, Act 172, of 1929, as amended.

COUNTY TREASURER'S CERTIFICATE

Office of County Treasurer, LIVINGSTON County, I hereby certify, that there are no tax liens or titles held by the State on the lands described hereon, and that there are no tax liens or titles held by individuals on said lands, for the five years preceding the 1962 day of January 1962, and that the taxes for said period of 1962 day of January 1962, are all paid, as shown by the records of this office. This certificate does not apply to taxes, if any, now in process of collection by township, city or village collecting officers.

APPROVAL BY COUNTY PLAT BOARD

This plot was approved on the 19th day of January, 1962, by the LIVINGSTON County Plat Board consisting of Charles DeGow (County Register of Deeds), John A. Heiman (County Clerk), Dorothy J. Greer (County Treasurer), and Floyd W. Muball (County Drain Commissioners).

APPROVAL BY BOARD OF COUNTY ROAD COMMISSIONERS

This plot has been examined and was approved on the 4th day of January, 1962, by the LIVINGSTON County Board of Road Commissioners.

Norman S. Moppin (Chairman)
Fred Berry (Member)
Warren H. Andersen (Member)

Office of County Treasurer, LIVINGSTON County, I hereby certify, that there are no tax liens or titles held by the State on the lands described hereon, and that there are no tax liens or titles held by individuals on said lands, for the five years preceding the 1962 day of January 1962, and that the taxes for said period of 1962 day of January 1962, are all paid, as shown by the records of this office. This certificate does not apply to taxes, if any, now in process of collection by township, city or village collecting officers.

Nicholas J. Linnel

DEDICATION

KNOW ALL MEN BY THESE PRESENTS, that we, Mary E. Wolter, a single woman, and Frank Bretz, a single man, and

STATE HOMES, INC., a corporation by Charles Goldberg Secretary George DeGow Secretary

A subdivision of part of the N.E. 1/4 of the N.W. 1/4, Sec. 31, T. 1 N., R. 5 E., Hamburg Twp., Livingston County Michigan

and that the streets Road or shown on said plat are hereby dedicated to the use of the Public

Signed and Sealed in the Presence of Mary E. Wolter (Witness) Lerna Maybourn (Witness)

Martin L. Smith (Witness) Frank Bretz (Witness)

STATE HOMES, INC. (L.S.)

John C. Miller (Witness) Charles Goldberg (President)

George DeGow (Secretary)

ACKNOWLEDGMENT

STATE OF MICHIGAN County of Washtenaw } ss. On this 19th day of January, 1962, before me, a Notary Public in and for said County, personally came the above named Mary E. Wolter, a single woman, and Frank Bretz a single man

known to me to be the persons who executed the above dedication, and acknowledged the same to be their free act and deed.

B. C. White Notary Public, Washtenaw County My Commission expires: 4-20-66

ACKNOWLEDGMENT

STATE OF Michigan } ss. On this 19th day of January, A.D. 1962 before me, Charles Goldberg a Notary Public in and for said county appeared Charles Goldberg and George DeGow President and Secretary respectively of the STATE HOMES, INC. a Michigan corporation, and George DeGow in behalf of said corporation by authority that said instrument was signed and acknowledged said instrument to be the free act and deed of said corporation.

Mary E. Wolter Notary Public, Washtenaw County My Commission expires: March 28, 1966

DESCRIPTION OF LAND PLATED

The land embraced in the annexed plat of NEWTON PLAINS is a subdivision of part of the N.E. 1/4 of the N.W. 1/4 of Section 31, T. 1 N., R. 5 E., Hamburg Twp., Livingston County Michigan, containing Lots 1 to 7 Ino. Beginning at the N.W. corner of the N.E. 1/4 of the N.W. 1/4 of said Section 31, said N.W. corner being S. 89° 58' 30" E. 1316.94 ft. from the N.W. cor. of said Section 31. Running thence S. 89° 58' 30" E. 435.0 ft.; thence S. 0° 46' E. 914.0 ft.; thence S. 89° 58' 30" E. 260.0 ft.; thence N. 0° 46' W. 110.0 ft.; thence S. 89° 58' 30" E. 175.0 ft.; thence N. 0° 46' W. 812.36 ft. to the point of beginning.

NOTE: All dimensions are given in feet and decimals thereof.