

"L. R. O'CONNOR SUBDIVISION"

PART OF THE N.1/2 OF SECTION 22, T.1N.-R.5E.,
HAMBURG TOWNSHIP, LIVINGSTON COUNTY, MICHIGAN

SHEET 1
OF
2 SHEETS

SCALE: ONE INCH = 100 FEET
0 20 40 60 80 100 150 200 300
10 30 50 70 90

PREPARED AND DRAFTED BY
BOSS ENGINEERING COMPANY
3121 EAST GRAND RIVER
HOWELL, MICHIGAN - 48843

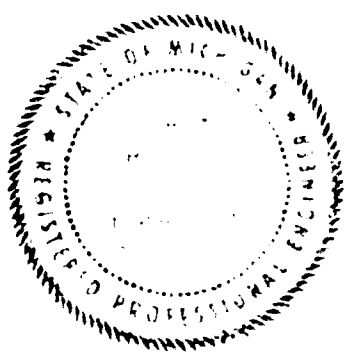
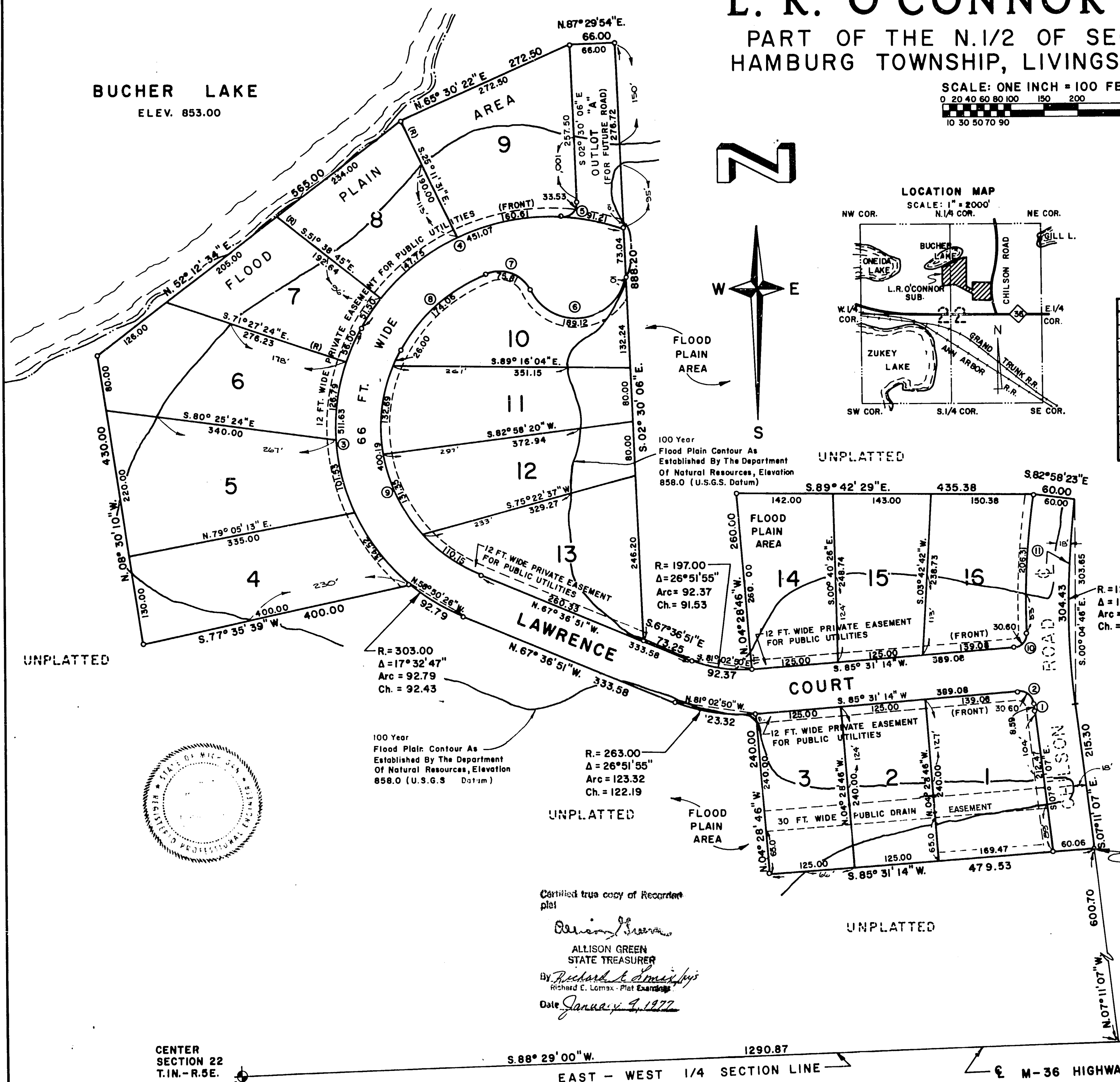
CURVE DATA:

NO.	DELTA	TAN.	RADIUS	ARC	CHORD	CH. BRG.
①	00°22'56"	4.29	1287.29	8.59	8.59	N.06°59'57"W.
②	87°40'35"	19.20	20.00	30.60	27.70	N.50°38'33"W.
③	96°44'51"	340.96	303.00	511.63	452.98	N.19°14'26"W.
④	80°45'52"	272.17	320.00	451.07	414.64	N.69°30'56"E.
⑤	96°04'04"	22.24	20.00	33.53	29.74	N.45°31'55"E.
⑥	144°28'33"	234.13	75.00	189.12	142.85	N.83°01'43"E.
⑦	86°52'15"	47.34	50.00	75.81	68.75	N.68°10'06"W.
⑧	39°15'47"	90.60	254.00	174.06	170.67	N.48°45'54"E.
⑨	96°44'51"	266.69	237.00	400.19	354.31	N.19°14'26"W.
⑩	87°40'35"	19.20	20.00	30.60	27.70	N.41°40'58"E.
⑪	09°10'58"	103.38	1287.29	206.31	206.09	N.02°26'08"E.

PLAT LEGEND

ALL DIMENSIONS ARE SHOWN IN FEET.
ALL CURVILINEAR DIMENSIONS ARE SHOWN ALONG THE ARC.
THE SYMBOL "O" INDICATES A CONCRETE MONUMENT.
ALL LOT MARKERS ARE 1/2 INCH IRON RODS AND ARE 18 INCHES IN LENGTH.
ALL BEARINGS ARE BASED ON TRUE NORTH BY OBSERVATION OF POLARIS - MARCH 19, 1976.

THIS PLAT IS SUBJECT TO RESTRICTIONS AS REQUIRED BY ACT 288 OF 1967, AS AMENDED ON CERTAIN LOTS WITH RESPECT TO THE REQUIREMENTS OF THE MICHIGAN DEPARTMENT OF NATURAL RESOURCES AND/OR THE MICHIGAN DEPARTMENT OF PUBLIC HEALTH, WHICH ARE RECORDED IN LIBER 720, PAGES 055-062 OF RECORDS OF THIS COUNTY.



Certified true copy of Recorded plat
Allison Green
STATE TREASURER
By Richard E. Lomax
Richard E. Lomax - Plat Examiner
Date January 4, 1977

CENTER SECTION 22
T.1N.-R.5E.

S.88°29'00"W. 1290.87
EAST - WEST 1/4 SECTION LINE

M-36 HIGHWAY