

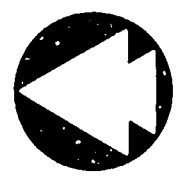
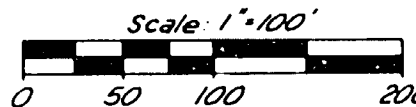


Certified true copy of Recorded plat

Allison Green
STATE TREASURER
By Richard E. Lomas/My's
Richard E. Lomas - Plat Examiner
Date May 3, 1977

"HURON RIVER HIGHLANDS"

PART OF THE WEST 1/2 OF SECTION 23, T.1N., R.5E.
HAMBURG TOWNSHIP, LIVINGSTON COUNTY, MICHIGAN

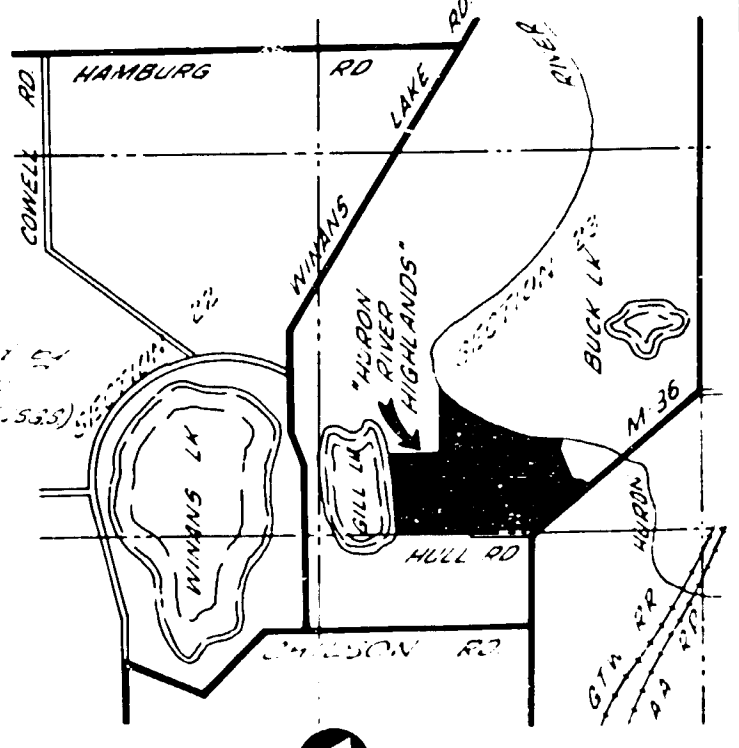
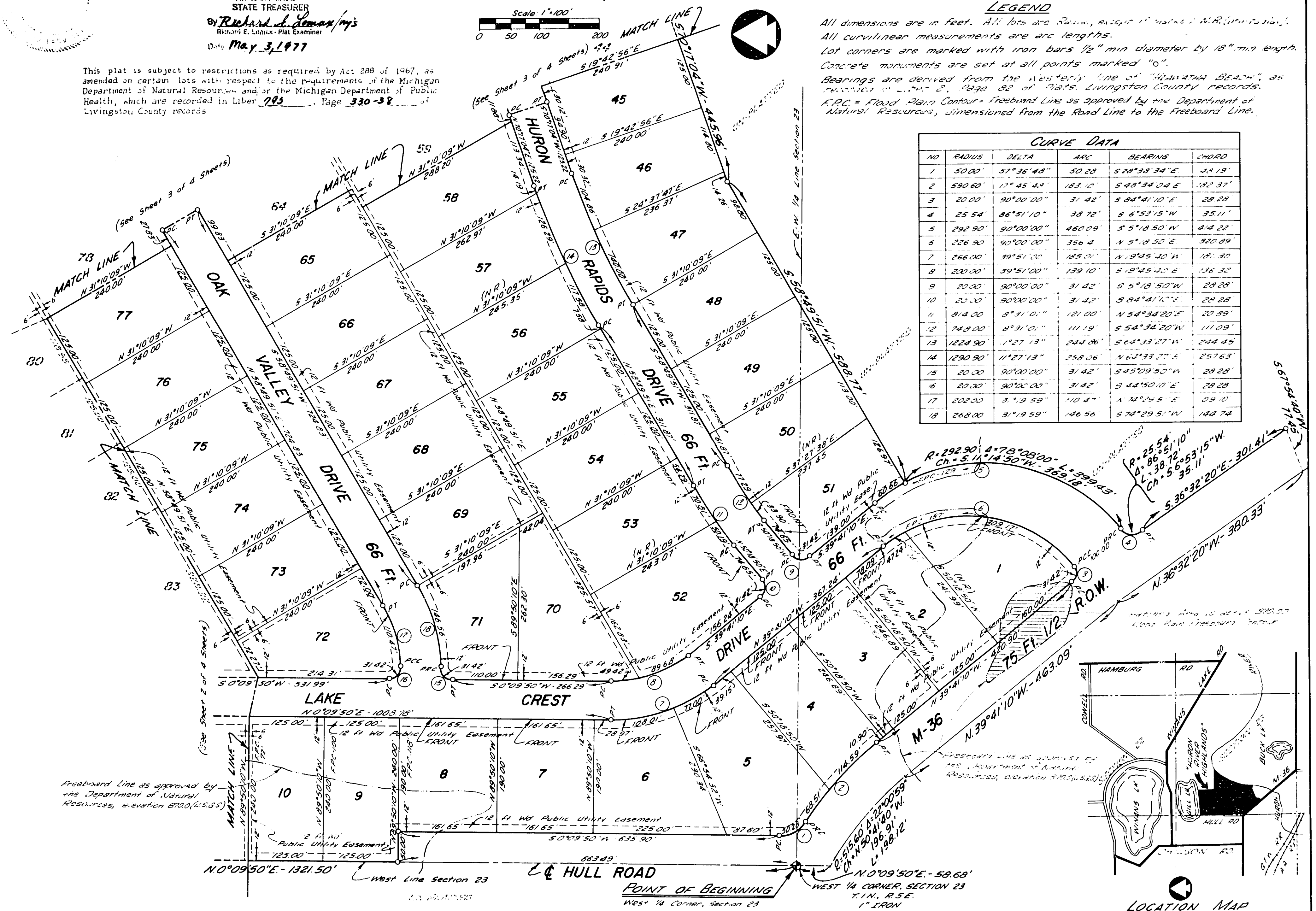


LEGEND

All dimensions are in feet. All lots are Rural, except where marked N.R. (non-residential).
All curvilinear measurements are arc lengths.
Lot corners are marked with iron bars 1/2" min diameter by 18" min length.
Concrete monuments are set at all points marked "o".
Bearings are derived from the westerly line of "Huron Beach", as referenced in Liber 2, Page 82 of Plats, Livingston County records.
F.P.C. = Flood Plain Contour = Freeboard Line as approved by the Department of Natural Resources, dimensioned from the Road Line to the Freeboard Line.

This plat is subject to restrictions as required by Act 288 of 1967, as amended on certain lots with respect to the requirements of the Michigan Department of Natural Resources and/or the Michigan Department of Public Health, which are recorded in Liber 993, Page 330-38 of Livingston County records

NO	RADIUS	DELTA	ARC	BEARING	CHORD
1	50.00'	57°36'48"	50.28'	S 28°38'34"E	42.19'
2	590.60'	17°45'44"	183.10'	S 48°34'04"E	182.37'
3	20.00'	90°00'00"	31.42'	S 84°41'10"E	28.28'
4	25.54'	86°51'10"	38.72'	S 6°53'15"W	35.11'
5	292.90'	90°00'00"	460.09'	S 5°18'50"W	414.22'
6	226.90'	90°00'00"	356.4'	N 5°18'50"E	320.89'
7	266.00'	39°51'00"	185.01'	N 19°45'40"W	181.30'
8	200.00'	39°51'00"	139.10'	S 19°45'40"E	136.32'
9	20.00'	90°00'00"	31.42'	S 5°18'50"W	28.28'
10	20.00'	90°00'00"	31.42'	S 84°41'10"E	28.28'
11	814.00'	8°31'01"	121.00'	N 54°34'20"E	20.89'
12	748.00'	8°31'01"	111.19'	S 54°34'20"W	111.09'
13	1224.90'	1°27'13"	244.86'	S 64°33'27"W	244.45'
14	1290.90'	11°27'13"	258.06'	N 64°33'27"E	257.63'
15	20.00'	90°00'00"	31.42'	S 45°09'50"W	28.28'
16	20.00'	90°00'00"	31.42'	S 44°50'10"E	28.28'
17	202.00'	3°19'59"	110.47'	N 12°29'5"E	109.10'
18	268.00'	3°19'59"	146.56'	S 74°29'51"W	144.74'



Freeboard Line as approved by the Department of Natural Resources, elevation 870.0 (45.65)

Freeboard Line as approved by the Department of Natural Resources, elevation 870.0 (45.65)

POINT OF BEGINNING
West 1/4 Corner, Section 23
T.1N., R.5E.
1" IRON

LOCATION MAP