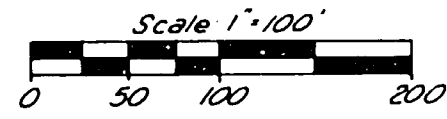


# "HURON RIVER HIGHLANDS"

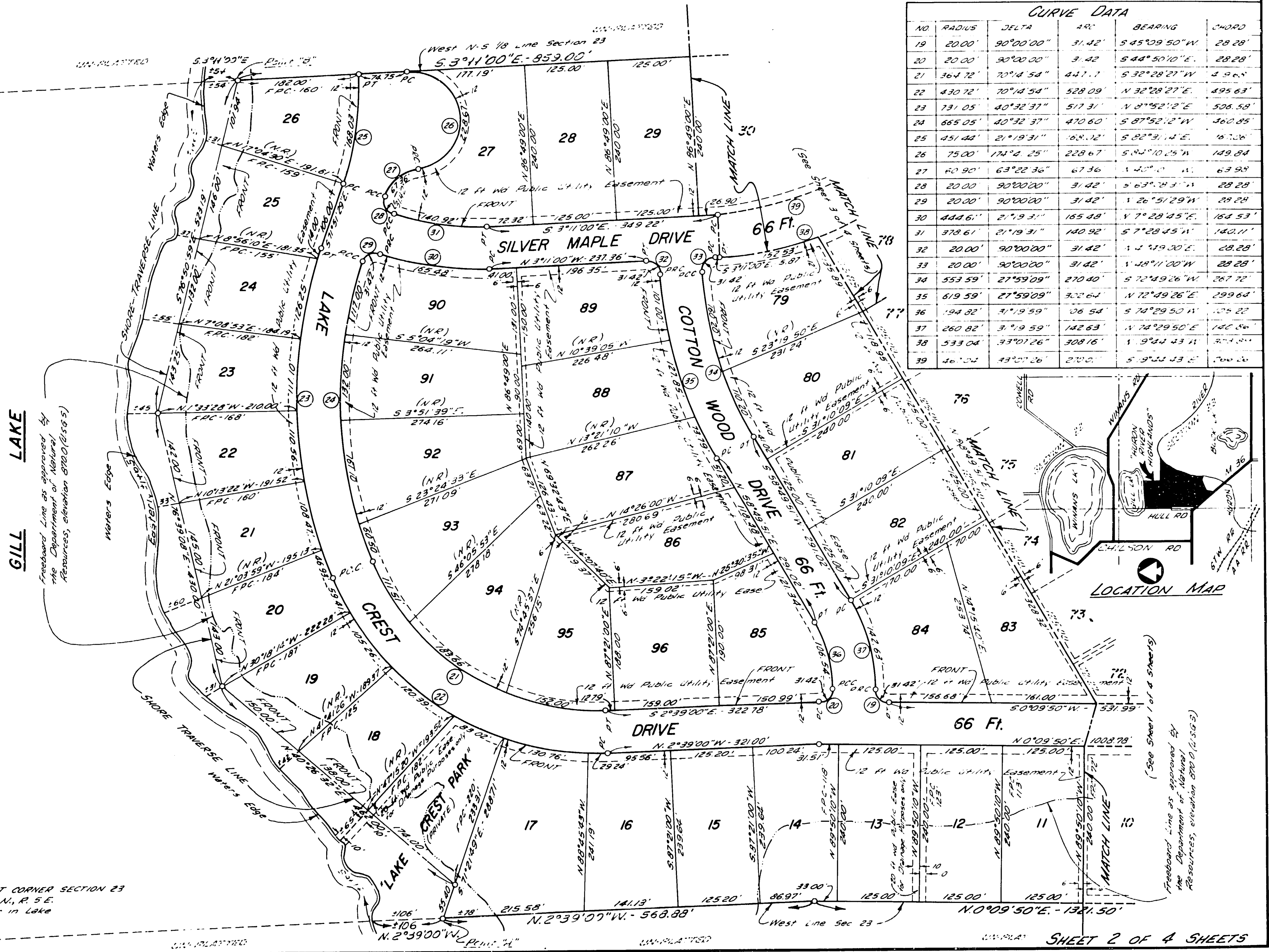
PART OF THE WEST 1/2 OF SECTION 23, T.1N., R.5E.,  
HAMBURG TOWNSHIP, LIVINGSTON COUNTY, MICHIGAN



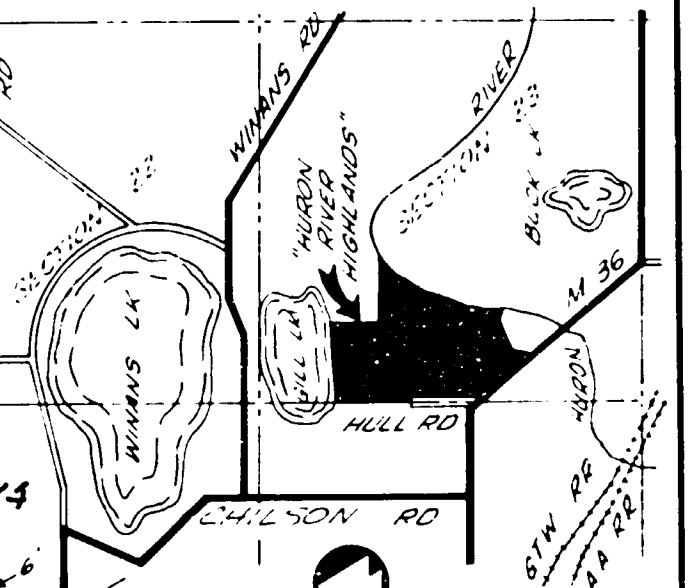
## LEGEND

All dimensions are in feet. All lots are Radial, except if marked "NR".  
All curve near measurements are arc lengths.  
Lot corners are marked with iron bars 1/2" min dia 3" x 18" min length.  
Concrete monuments are set at all points marked "O".  
Bearings are derived from the Westerly line of "HIAWATHA BLVD" as recorded in 2-28-21, Page 82 of Maps, Livingston County records.  
F.P.C. = (Free) Fair Contour - Freeboard Line as approved by the Department of Natural Resources, dimensioned from the Road Line to the Freeboard Line.

NO	RADIUS	DELTA	ARC	BEARING	CHORD
19	20.00'	90°00'00"	31.42'	S 45°09'50"W	28.28'
20	20.00'	90°00'00"	31.42'	S 44°50'10"E	28.28'
21	364.72'	70°14'54"	447.1'	S 32°28'27"W	496.4'
22	430.72'	70°14'54"	528.09'	N 32°28'27"E	495.63'
23	731.05'	40°32'37"	517.31'	N 8°52'12"E	508.58'
24	665.05'	40°32'37"	470.60'	S 87°52'12"W	360.85'
25	451.44'	21°19'31"	168.12'	S 82°31'14"E	167.06'
26	75.00'	174°2'25"	228.67'	S 42°10'25"W	149.84'
27	40.90'	63°22'36"	67.36'	S 40°0'0" W	63.94'
28	20.00'	90°00'00"	31.42'	S 63°28'31"W	28.28'
29	20.00'	90°00'00"	31.42'	N 26°51'29"W	28.28'
30	444.61'	21°19'31"	165.48'	N 7°28'45"E	164.53'
31	378.61'	21°19'31"	140.92'	S 7°28'45"W	140.11'
32	20.00'	90°00'00"	31.42'	N 2°39'00"E	28.28'
33	20.00'	90°00'00"	31.42'	N 28°11'00"W	28.28'
34	553.59'	27°59'09"	270.40'	S 72°49'26"W	267.72'
35	619.59'	27°59'09"	302.64'	N 72°49'26"E	299.64'
36	194.82'	31°19'59"	106.54'	S 74°29'50"W	105.22'
37	260.82'	31°19'59"	142.63'	N 74°29'50"E	140.86'
38	533.04'	33°01'26"	308.16'	N 9°34'43"W	304.01'
39	461.04'	43°07'26"	270.0'	S 9°34'43"E	266.26'



## LOCATION MAP



"PLEASANT LAKE MILLS ANNEX"  
(Liber 2, Page 3)  
C.D. 77, 127, 128  
Recorded 1257-1291, 65  
North Line Section 23

GILL LAKE  
Freeboard Line as approved by the Department of Natural Resources, elevation 870.0 (2158.5)

Freeboard Line as approved by the Department of Natural Resources, elevation 870.0 (2158.5)  
(See Sheet 1 of 4 Sheets)