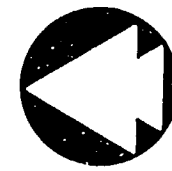
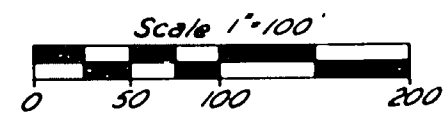




"HURON RIVER HIGHLANDS"

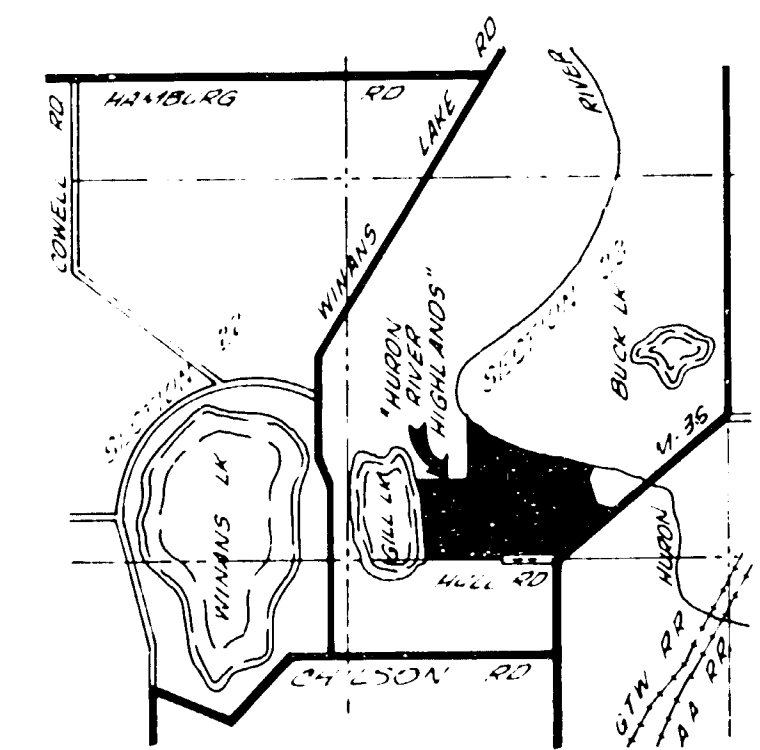
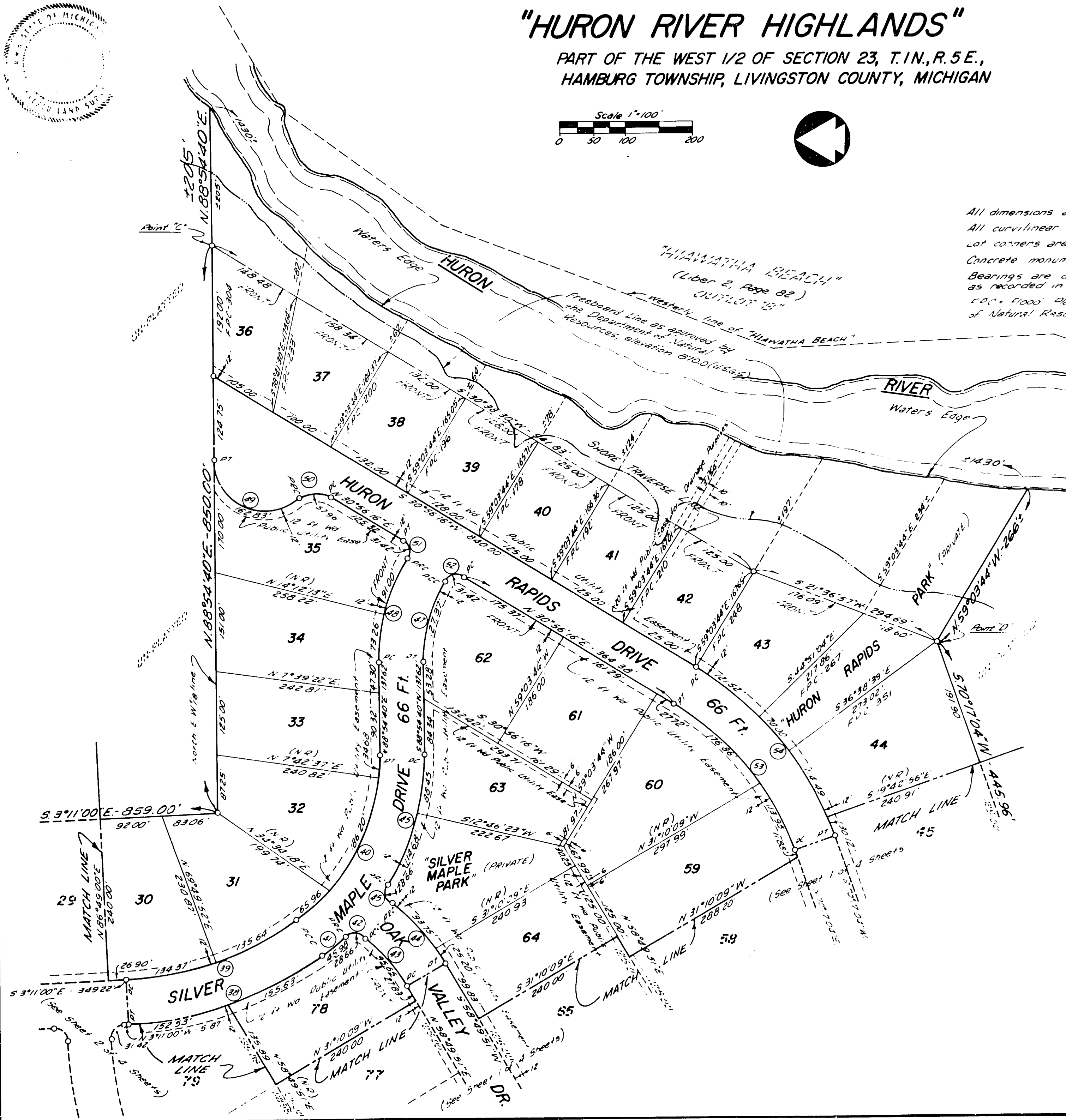
PART OF THE WEST 1/2 OF SECTION 23, T.1N., R.5E.,
HAMBURG TOWNSHIP, LIVINGSTON COUNTY, MICHIGAN



LEGEND

All dimensions are in feet. All lots are shown, except for those shown otherwise.
All curvilinear measurements are arc lengths.
Lot corners are marked with iron bars 1/2" min dia by 18" min length.
Concrete monuments are set at all points marked "O".
Bearings are derived from the westerly line of "HIAWATHA BEACH" as recorded in Liber 2, Page 82 of Plats, Livingston County records.
F.P.C. = Flood Plain Contour = Freeboard Line as approved by the Department of Natural Resources, dimensioned from the Road Line to the Freeboard Line.

NO	RADIUS	DELTA	ARC	BEARING	CHORD
38	533.04'	33°07'26"	308.16'	N 19°44'43" W	303.89'
39	467.04'	33°07'26"	210.01'	S 19°44'43" E	266.26'
40	300.00'	54°46'54"	286.84'	S 63°41'53" E	216.03'
41	366.00'	7°11'52"	45.98'	N 39°54'22" W	45.95'
42	20.00'	82°06'29"	28.66'	N 2°27'03" W	26.21'
43	210.94'	20°33'39"	95.65'	N 48°43'02" E	95.16'
44	336.94'	20°33'39"	118.95'	S 48°43'02" W	118.34'
45	20.00'	82°06'29"	28.66'	S 79°39'27" W	26.27'
46	366.00'	31°48'01"	203.14'	N 75°11'19" W	200.54'
47	227.87'	32°01'36"	21.37'	N 75°04'32" W	125.72'
48	193.87'	32°01'36"	64.26'	S 75°04'32" E	162.13'
49	75.00'	124°23'43"	62.83'	N 26°42'48" E	132.62'
50	50.00'	66°25'14"	5.96'	N 2°16'24" W	54.00'
51	20.00'	90°00'00"	3.42'	N 75°56'16" E	28.24'
52	20.00'	90°00'00"	3.42'	N 14°03'44" W	19.28'
53	423.47'	39°20'24"	290.18'	N 50°36'42" E	245.3'
54	439.47'	14°20'44"	336.3'	S 50°36'42" W	312.57'



LOCATION MAP