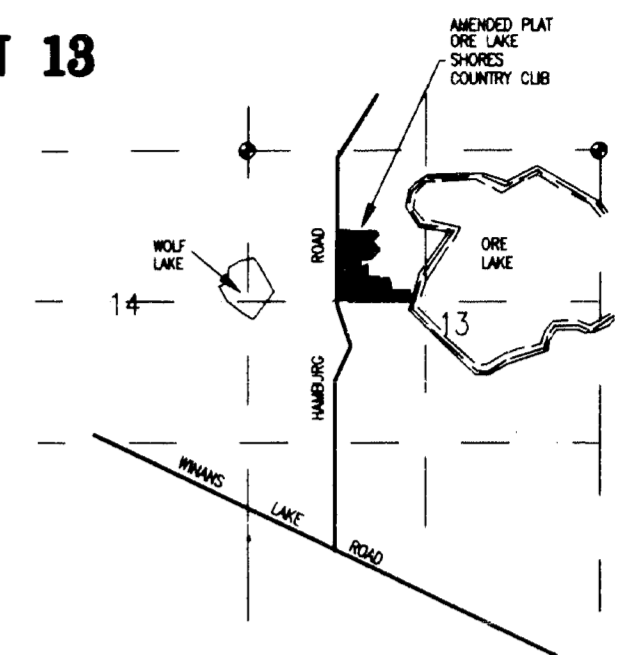
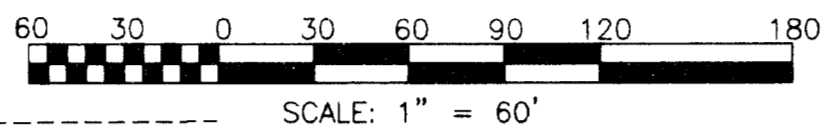
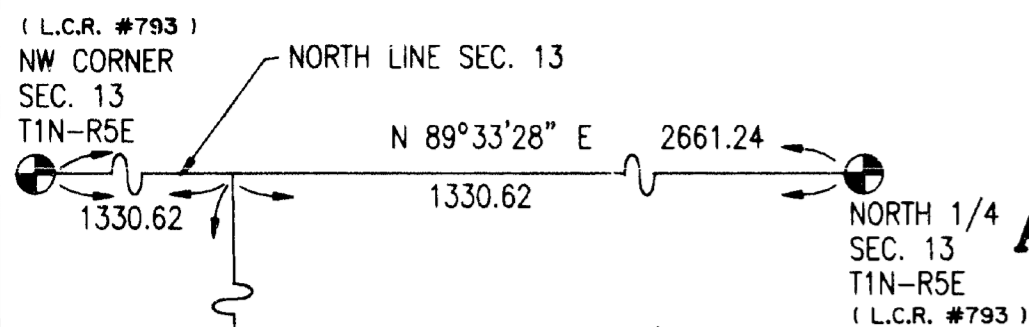


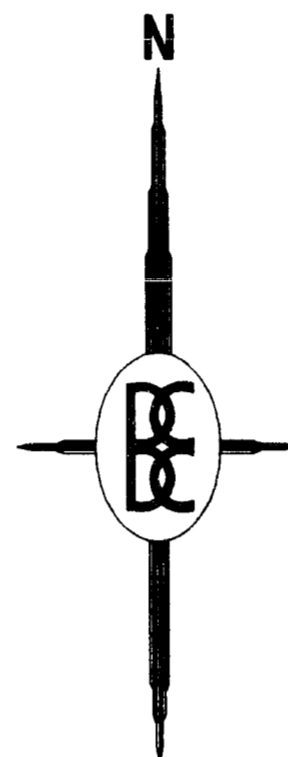
AMENDED PLAT OF  
 LOTS 1,2,6-13 BLOCK 13; LOTS 1-4,10-21 BLOCK 15; LOTS 1-18 BLOCK 16; LOTS 1-33 BLOCK 18  
 N. VALLEY DRIVE, PART OF SOUTH VALLEY DRIVE, PART OF SOUTH DRIVE  
 AND PART OF VACATED LOCUST DRIVE

**ORE LAKE SHORES COUNTRY CLUB**  
 A SUBDIVISION OF PART OF THE NW 1/4 AND PART OF THE SW 1/4 OF SECTION 13  
 T1N-R5E, HAMBURG TOWNSHIP, LIVINGSTON COUNTY, MICHIGAN



LOCATION MAP

CERTIFIED TRUE COPY OF  
 RECORDED PLAT  
 BY DEPARTMENT OF COMMERCE  
*Richard E. Lomax, L.S.*  
 Richard E. Lomax, L.S.  
 Manager, Plat Section  
 December 20, 1991

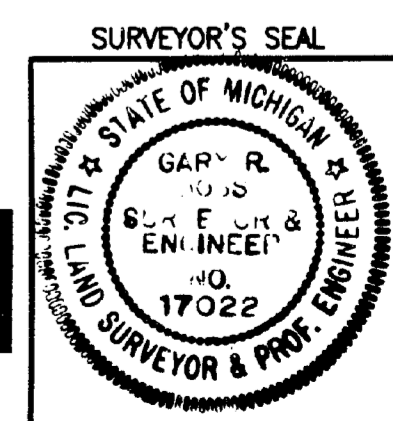


CURVE DATA					
CURVE	RADIUS	CENTRAL ANGLE	ARC LENGTH	CHORD LENGTH	BEARING DIRECTION
1	52.11	78°43'03"	71.59	66.09	S 51°38'00"E
2	90.00	32°07'32"	50.46	49.80	S 74°55'46" E
3	50.00	30°55'04"	26.98	26.65	N 74°19'32" W

LEGEND:  
 All dimensions are shown in feet.  
 All curvilinear dimensions are shown along the arc.  
 The symbol "o" indicates a concrete monument, which is 4" in diameter x 36" long, encasing a 1/2" iron rod.  
 The symbol (R) denotes a radial lot line.  
 All lot markers are 1/2 inch iron rods and are 18 inches in length. (not capped)  
 Bearings were established from the recorded Plat of "Ore Lake Shores Country Club" a subdivision as recorded in Liber 2 of Plats, page 66, Livingston County Records.

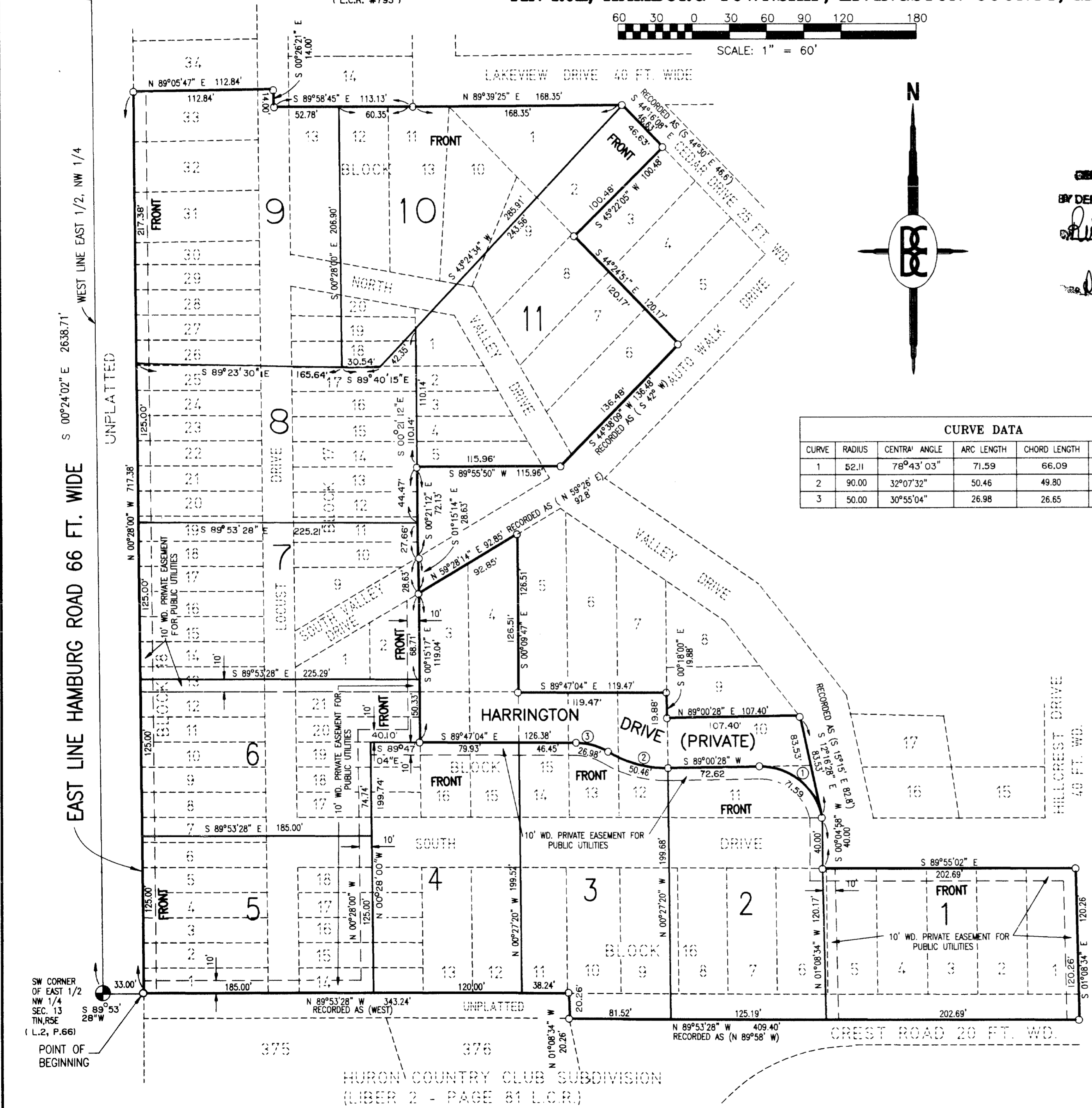
PREPARED AND DRAFTED BY:  
 Boss Engineering Company  
 3121 East Grand River  
 Howell, Michigan 48843

*Gary R. Boss*  
 Gary R. Boss



061511

LIBER \_\_\_\_\_ PAGE \_\_\_\_\_



HURON COUNTRY CLUB SUBDIVISION  
 (LIBER 2 - PAGE 81 L.C.R.)