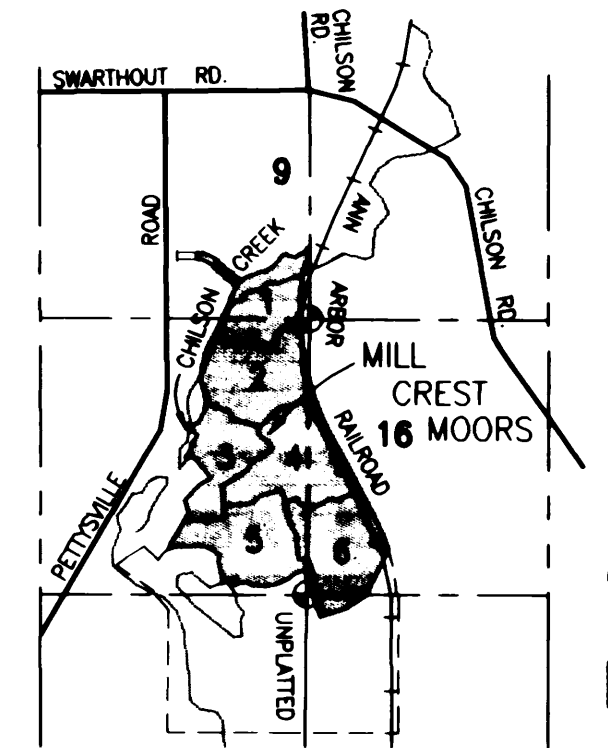


THIS PLAT IS SUBJECT TO RESTRICTIONS REQUIRED BY ACT 288 OF 1967, AS AMENDED ON CERTAIN LOTS WITH RESPECT TO THE REQUIREMENTS OF THE MICHIGAN DEPARTMENT OF NATURAL RESOURCES AND/OR THE MICHIGAN DEPARTMENT OF PUBLIC HEALTH, WHICH ARE RECORDED IN 1876 OF RECORDS OF THIS COUNTY.

# MILL CREST MOORS

A PART OF THE SOUTHEAST 1/4 AND SOUTHWEST 1/4 OF SECTION 9 AND PART OF THE NORTHEAST 1/4 AND NORTHWEST 1/4 AND SOUTHEAST 1/4 OF SECTION 16, T1N-R5E, HAMBURG TOWNSHIP, LIVINGSTON COUNTY, MICHIGAN

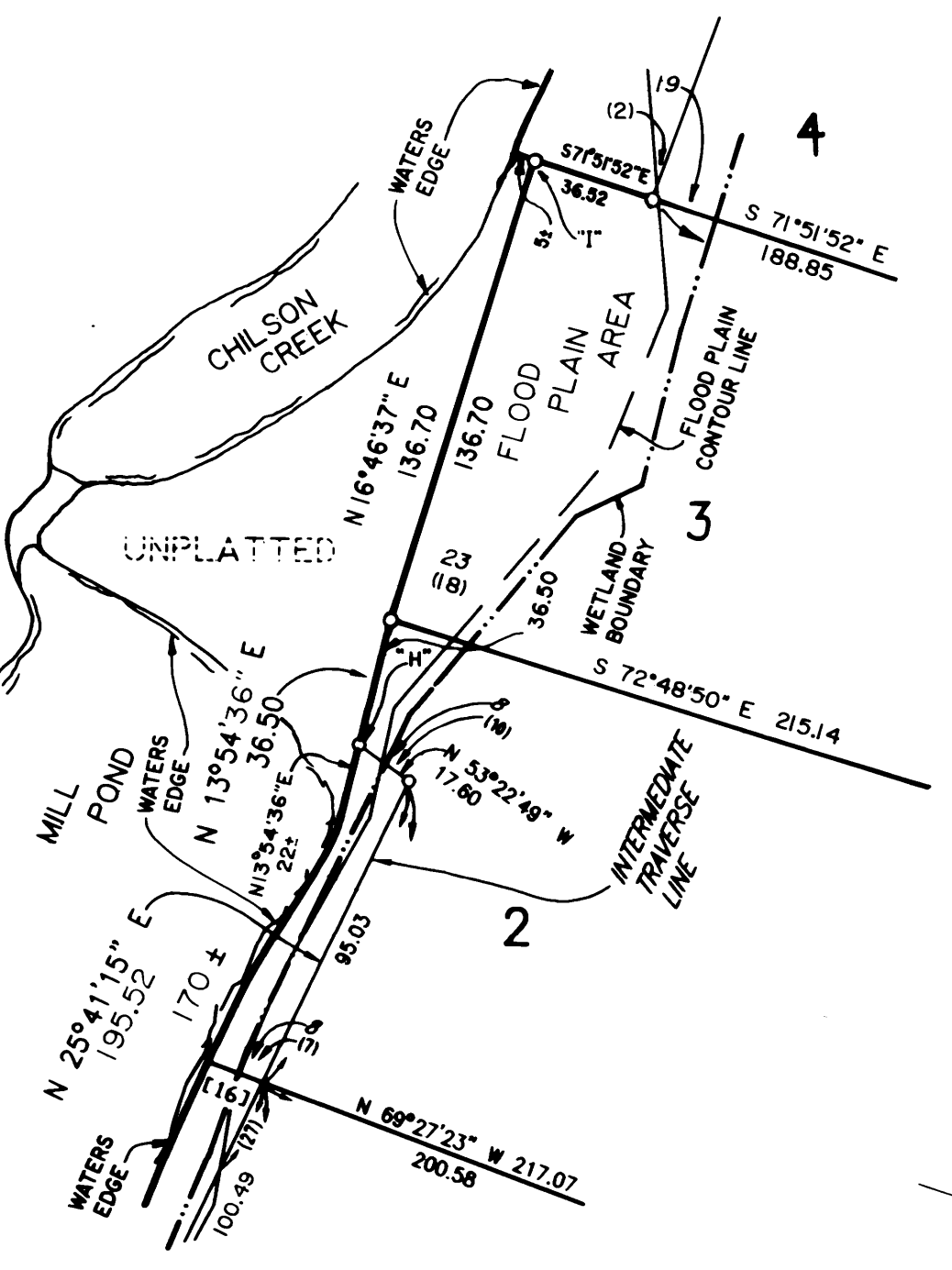
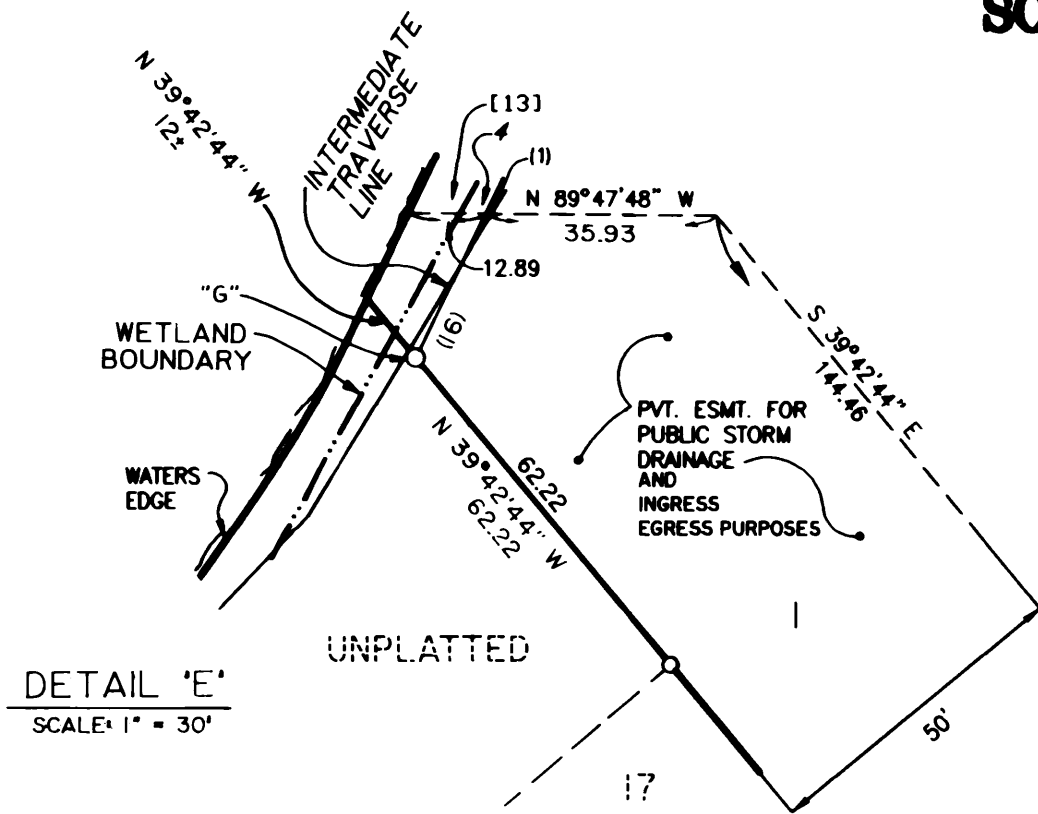
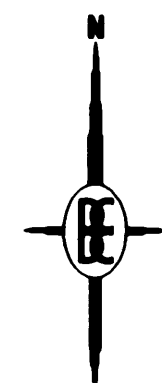
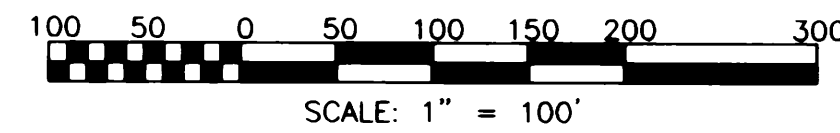
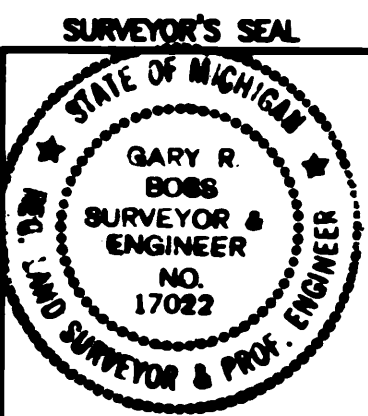


LOCATION MAP  
SCALE: 1" = 2000'

**LEGEND:**  
 THE SYMBOL "●" INDICATES A CONCRETE MONUMENT WHICH HAS BEEN FOUND.  
 NUMBERS IN BOXES [889.7] INDICATE THE FLOOD PLAIN CONTOUR ELEVATION ON SELECTED SIDE LOT LINES.  
 ALL DIMENSIONS ARE SHOWN IN FEET.  
 ALL CURVILINEAR DIMENSIONS ARE SHOWN ALONG THE ARC.  
 THE SYMBOL "O" INDICATES A CONCRETE MONUMENT, WHICH IS 4" IN DIAMETER X 36" LONG, ENCASING A 1/2" IRON ROD.  
 THE SYMBOL (R) DENOTES A RADIAL LOT LINE.  
 ALL LOT MARKERS ARE 1/2 INCH IRON RODS AND ARE 18 INCHES IN LENGTH. (NOT CAPPED)  
 BEARINGS WERE ESTABLISHED FROM THE PLAT OF "CREEK & MEADOWS SUBDIVISION NO. 2", AS RECORDED IN LIBER 15 OF PLATS ON PAGES 31-32 OF THE LIVINGSTON COUNTY RECORDS.  
 ALL DIMENSIONS SHOWN IN PARENTHESIS (50) ARE FROM THE INTERMEDIATE TRAVERSE LINE OR LOT LINE TO THE FLOOD PLAIN.  
 ALL DIMENSIONS SHOWN IN ITALICS *14* ARE FROM THE INTERMEDIATE TRAVERSE LINE OR LOT LINE TO THE WETLANDS.  
 ALL DIMENSIONS SHOWN IN BRACKETS [88] ARE FROM THE INTERMEDIATE TRAVERSE LINE TO THE WATERS EDGE.  
 INTERMEDIATE TRAVERSE POINTS ARE LETTERED AND SHOWN AS "A", "B", ETC.

PREPARED AND DRAFTED BY:  
 BOSS ENGINEERING COMPANY  
 3121 EAST GRAND RIVER  
 HOWELL, MICHIGAN 48843

*Gary R. Boss*  
 GARY R. BOSS



CURVE	RADIUS	CENTRAL ANGLE	ARC LENGTH	CHORD LENGTH	BEARING DIRECTION
31	197.00	29°08'03"	100.17	99.10	N 35°43'14" E
32	75.00	169°05'41"	221.34	149.32	N 55°44'25" E
33	50.00	59°55'38"	52.30	49.95	S 01°09'23" W
34	263.00	09°58'00"	45.75	45.69	N 26°08'13" E
35	20.00	90°00'00"	31.42	28.28	S 66°09'13" W
36	20.00	90°00'00"	31.42	28.28	S 23°50'47" E
37	275.00	53°52'20"	258.57	249.15	N 41°54'37" W
38	209.00	53°52'20"	196.51	189.35	N 41°54'37" W

