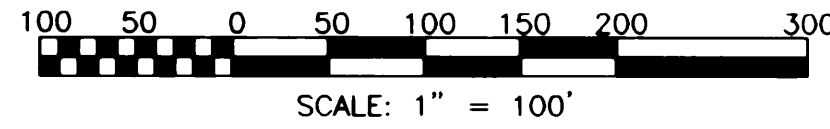


THIS PLAT IS SUBJECT TO RESTRICTIONS REQUIRED BY ACT 288 OF 1967, AS AMENDED ON CERTAIN LOTS WITH RESPECT TO THE REQUIREMENTS OF THE MICHIGAN DEPARTMENT OF NATURAL RESOURCES AND/OR THE MICHIGAN DEPARTMENT OF PUBLIC HEALTH, WHICH ARE RECORDED IN LIBER 1976, PAGES 122-821, OF RECORDS OF THIS COUNTY.

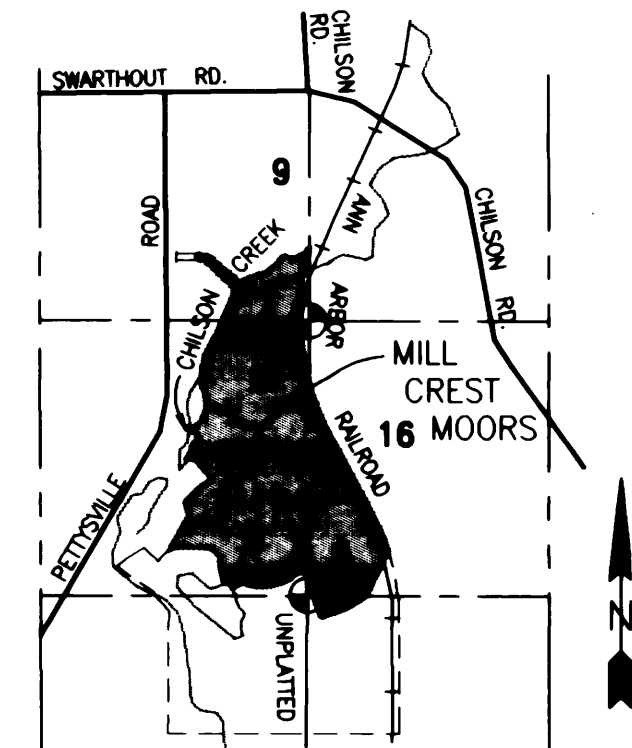
MILL CREST MOORS

A PART OF THE SOUTHEAST 1/4 AND SOUTHWEST 1/4 OF SECTION 9 AND PART OF THE NORTHEAST 1/4 AND NORTHWEST 1/4 AND SOUTHEAST 1/4 OF SECTION 16, TIN-R5E, HAMBURG TOWNSHIP, LIVINGSTON COUNTY, MICHIGAN

CURVE DATA					
CURVE	RADIUS	CENTRAL ANGLE	ARC LENGTH	CHORD LENGTH	BEARING DIRECTION
26	263.00	37°15'59"	171.06	168.06	N 39°05'46" W
37	275.00	53°52'20"	258.57	249.15	N 41°54'37" W
38	209.00	53°52'20"	196.51	189.35	N 41°54'37" W
39	20.00	90°00'00"	31.42	28.28	S 59°58'28" E
40	209.00	13°09'11"	47.98	47.87	N 68°26'57" E
41	20.00	90°00'00"	31.42	28.28	N 16°52'22" E
42	2000.00	07°39'52"	267.54	267.34	S 24°17'43" E
43	197.00	37°15'59"	128.13	125.89	N 39°05'46" W
44	1934.00	07°39'52"	258.71	258.52	S 24°17'43" E
45	20.00	90°00'00"	31.42	28.28	N 73°07'38" W
46	275.00	13°09'11"	63.13	62.99	N 68°26'57" E
47	20.00	90°00'00"	31.42	28.28	S 30°01'32" W
48	263.00	24°01'51"	110.31	109.50	N 02°57'32" W
49	197.00	24°01'51"	82.62	82.02	N 02°57'32" W



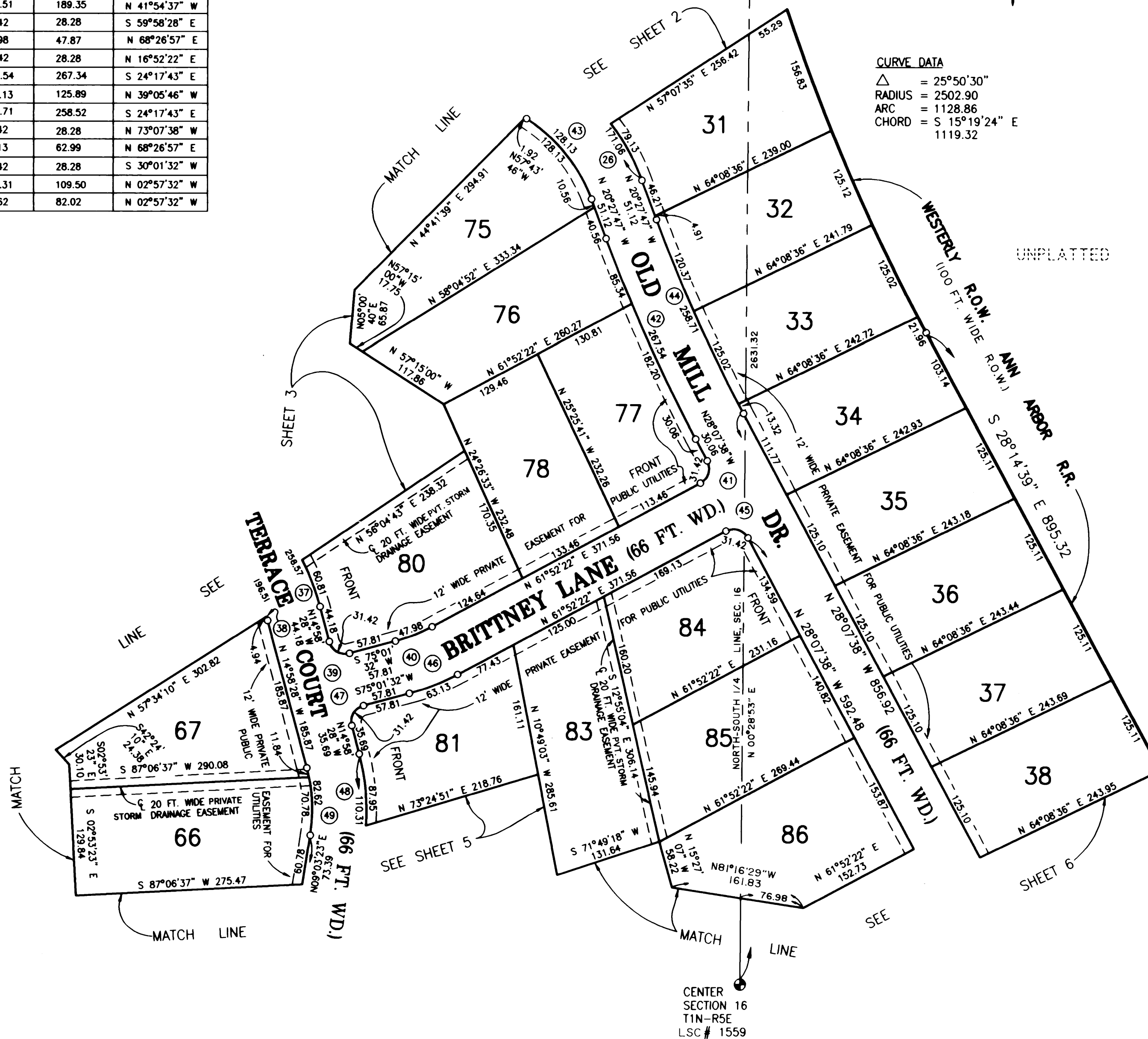
SOUTH 1/4 COR.
SECTION 9
T1N-R5E
LSC # 426
&
NORTH 1/4 COR.
SECTION 16
LSC # 426



LOCATION MAP
SCALE: 1" = 2000'

CURVE DATA

△	= 25°50'30"
RADIUS	= 2502.90
ARC	= 1128.86
CHORD	= S 15°19'24" E 1119.32



LEGEND:

ALL DIMENSIONS ARE SHOWN IN FEET.

ALL CURVILINEAR DIMENSIONS ARE SHOWN ALONG THE ARC.

THE SYMBOL "O" INDICATES A CONCRETE MONUMENT, WHICH IS 4" IN DIAMETER X 36" LONG, ENCASED A 1/2" IRON ROD.

THE SYMBOL (R) DENOTES A RADIAL LOT LINE.

ALL LOT MARKERS ARE 1/2 INCH IRON RODS AND ARE 18 INCHES IN LENGTH. (NOT CAPPED)

BEARINGS WERE ESTABLISHED FROM THE PLAT OF "CREEK & MEADOWS SUBDIVISION NO. 2", AS RECORDED IN LIBER 15 OF PLATS ON PAGES 31-32 OF THE LIVINGSTON COUNTY RECORDS.

ALL DIMENSIONS SHOWN IN PARENTHESIS (50) ARE FROM THE INTERMEDIATE TRAVERSE LINE OR LOT LINE TO THE FLOOD PLAIN.

ALL DIMENSIONS SHOWN IN ITALICS *14* ARE FROM THE INTERMEDIATE TRAVERSE LINE OR LOT LINE TO THE WETLANDS.

ALL DIMENSIONS SHOWN IN BRACKETS [88] ARE FROM THE INTERMEDIATE TRAVERSE LINE TO THE WATERS EDGE.

ALL INTERMEDIATE TRAVERSE POINTS ARE LETTERED AND SHOWN AS "A", "B", ETC.

PREPARED AND DRAFTED BY:
BOSS ENGINEERING COMPANY
3121 EAST GRAND RIVER
HOWELL, MICHIGAN 48843

Gary R. Boss
GARY R. BOSS

