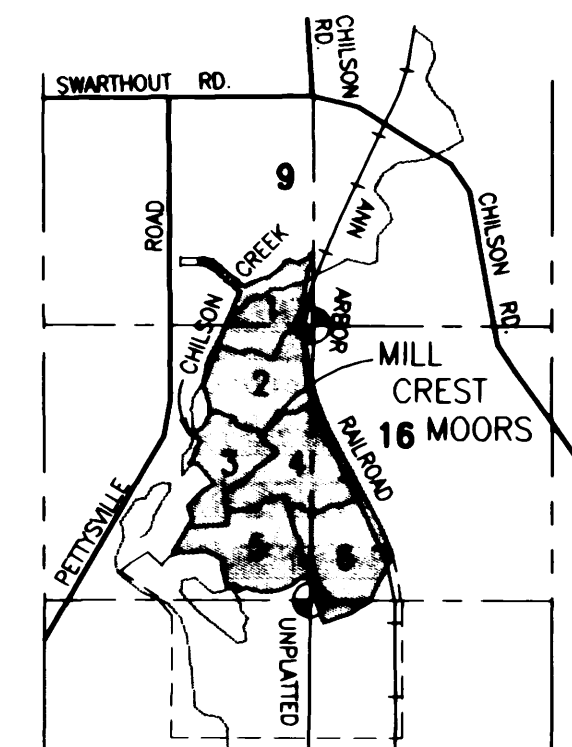


THIS PLAT IS SUBJECT TO RESTRICTIONS REQUIRED BY ACT 288 OF 1967, AS AMENDED ON CERTAIN LOTS WITH RESPECT TO THE REQUIREMENTS OF THE MICHIGAN DEPARTMENT OF NATURAL RESOURCES AND/OR THE MICHIGAN DEPARTMENT OF PUBLIC HEALTH, WHICH ARE RECORDED IN LIBER 1559, PAGES 122-131, OF RECORDS OF THIS COUNTY.

# MILL CREST MOORS

A PART OF THE SOUTHEAST 1/4 AND SOUTHWEST 1/4 OF SECTION 9 AND PART OF THE NORTHEAST 1/4 AND NORTHWEST 1/4 AND SOUTHEAST 1/4 OF SECTION 16, T1N-R5E, HAMBURG TOWNSHIP, LIVINGSTON COUNTY, MICHIGAN

SOUTH 1/4 COR. SECTION 9 T1N-R5E LSC # 426 & NORTH 1/4 COR. SECTION 16 LSC # 426

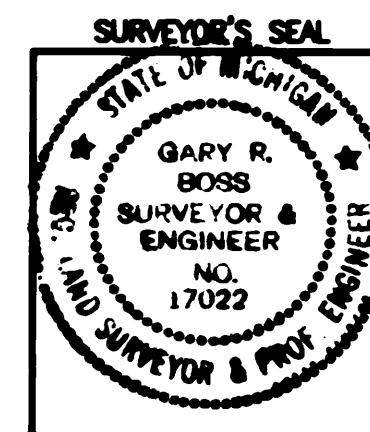


LOCATION MAP SCALE: 1" = 2000'

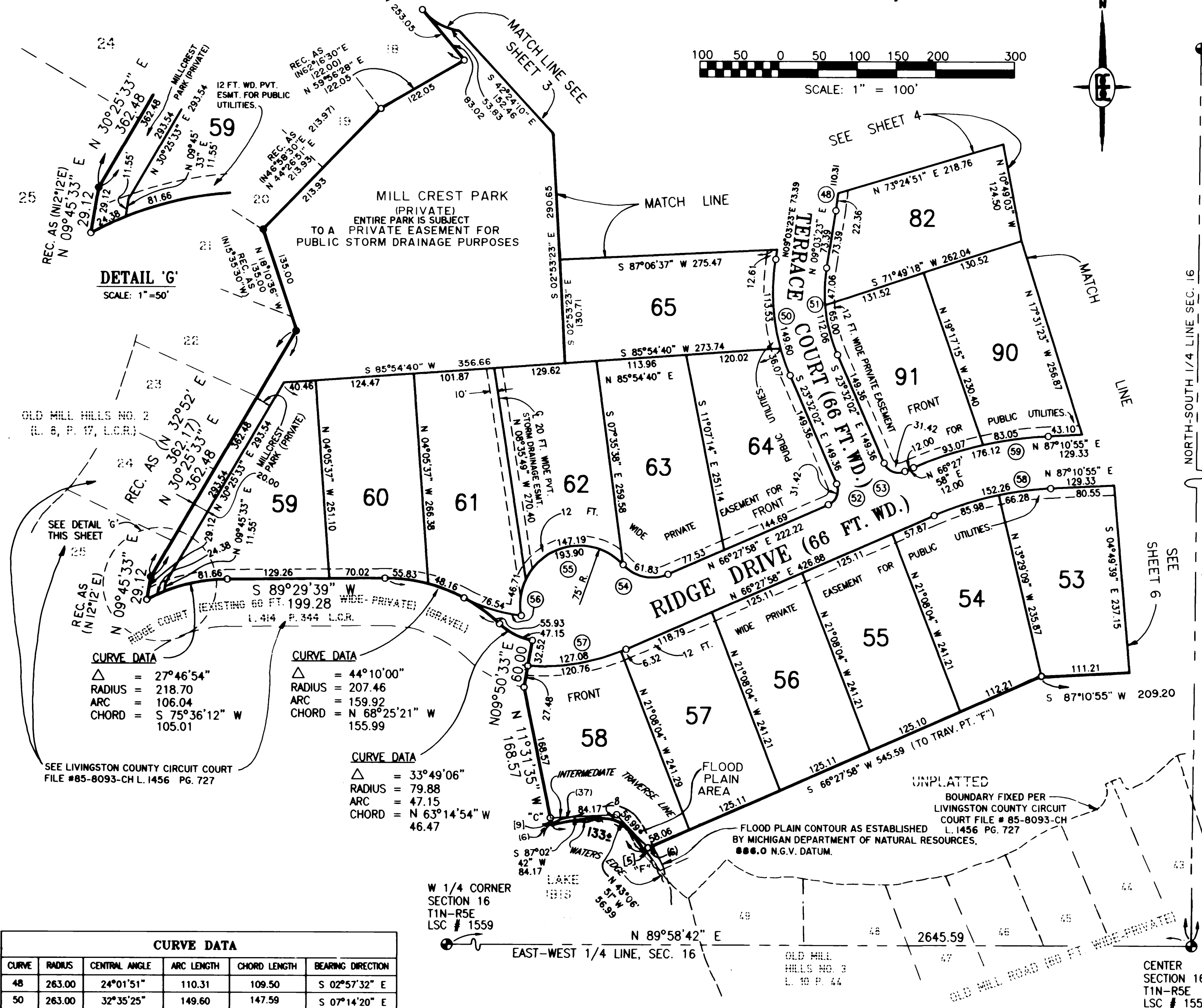
**LEGEND:**  
 THE SYMBOL "●" INDICATES A CONCRETE MONUMENT WHICH HAS BEEN FOUND.  
 ALL DIMENSIONS ARE SHOWN IN FEET.  
 ALL CURVILINEAR DIMENSIONS ARE SHOWN ALONG THE ARC.  
 THE SYMBOL "O" INDICATES A CONCRETE MONUMENT, WHICH IS 4" IN DIAMETER X 36" LONG, ENCASING A 1/2" IRON ROD.  
 THE SYMBOL (R) DENOTES A RADIAL LOT LINE.  
 ALL LOT MARKERS ARE 1/2 INCH IRON RODS AND ARE 18 INCHES IN LENGTH. (NOT CAPPED)  
 BEARINGS WERE ESTABLISHED FROM THE PLAT OF "CREEK & MEADOWS SUBDIVISION NO. 2", AS RECORDED IN LIBER 15 OF PLATS ON PAGES 31-32 OF THE LIVINGSTON COUNTY RECORDS.  
 ALL DIMENSIONS SHOWN IN PARENTHESIS (50) ARE FROM THE INTERMEDIATE TRAVERSE LINE OR LOT LINE TO THE FLOOD PLAIN.  
 ALL DIMENSIONS SHOWN IN ITALICS *14* ARE FROM THE INTERMEDIATE TRAVERSE LINE OR LOT LINE TO THE WETLANDS.  
 ALL DIMENSIONS SHOWN IN BRACKETS [88] ARE FROM THE INTERMEDIATE TRAVERSE LINE TO THE WATERS EDGE.  
 ALL INTERMEDIATE TRAVERSE POINTS ARE LETTERED AND SHOWN AS "A", "B", ETC.

PREPARED AND DRAFTED BY:  
 BOSS ENGINEERING COMPANY  
 3121 EAST GRAND RIVER  
 HOWELL, MICHIGAN 48843

*Gary R. Boss*  
 GARY R. BOSS



LIBER \_\_\_\_\_ PAGE \_\_\_\_\_



DETAIL 'G' SCALE: 1"=50'

**CURVE DATA**

Δ	=	27°46'54"
RADIUS	=	218.70
ARC	=	106.04
CHORD	=	S 75°36'12" W 105.01

**CURVE DATA**

Δ	=	44°10'00"
RADIUS	=	207.46
ARC	=	159.92
CHORD	=	N 68°25'21" W 155.99

**CURVE DATA**

Δ	=	33°49'06"
RADIUS	=	79.88
ARC	=	47.15
CHORD	=	N 63°14'54" W 46.47

**CURVE DATA**

CURVE	RADIUS	CENTRAL ANGLE	ARC LENGTH	CHORD LENGTH	BEARING DIRECTION
48	263.00	24°01'51"	110.31	109.50	S 02°57'32" E
50	263.00	32°35'25"	149.60	147.59	S 07°14'20" E
51	197.00	32°35'25"	112.06	110.55	S 07°14'20" E
52	20.00	90°00'00"	31.42	28.28	N 21°27'58" E
53	20.00	90°00'00"	31.42	28.28	S 68°32'02" E
54	50.00	70°51'09"	61.83	57.97	S 78°06'28" E
55	75.00	148°07'34"	193.90	144.23	S 63°15'20" W
56	197.00	22°15'35"	76.54	76.05	S 72°54'53" E
57	263.00	27°41'03"	127.08	125.84	N 80°18'29" E
58	421.11	20°42'58"	152.26	151.43	S 76°49'27" W
59	487.11	20°42'58"	176.12	175.16	S 76°49'27" W