



---

**HAMBURG TOWNSHIP  
PARKS AND RECREATION COMMITTEE  
REGULAR MEETING AGENDA  
Hamburg Township Board Room  
Tuesday, October 25, 2022 – 3:00 p.m.**

1. Call to Order
2. Pledge to the Flag
3. Roll Call of the Board
4. Call to the Public
5. Approval of the Agenda
6. Approval of the Minutes
  - A. September 27, 2022 – Regular Meeting
7. Correspondence
  - A. Letter of Concern re: 2022 Fun Fest Programming (Consent TB 10/18/22)
  - B. Hamburg Township Historical Museum Newsletter
8. Current Business
  - A. Master Plan Renewal
    1. Master Plan Draft – Review and Recommend
    2. Timeline Review and Next Steps
9. Old Business
  - A. Parks & Recreation Master Plan/Pending Grants/Supervisor Report**
    1. Iron Belle Trail/Lakelands Trail Projects – Supervisor Update
      - Hay Creek Bridge – Funding request being processed
      - Trail Maintenance Project – Closed
      - Huron River free-span Bridge Grant – No Update
    2. 5-year Parks Master Plan – See above
    3. Bennett Park & Water Trail Access Improvements – Supplemental info submitted
  - B. Township Park Use Policy/Fee/Procedures**
    1. Park Facility Use Policy – In Progress

- Park Use Policy updates – No updates
- Community Center Policy & Fee change – No updates

**C. Administrative Services**

1. Park Coordinator's Report – October 2022
2. Senior Center Report – September 2022
3. Scholarship Request
  - a. East Michigan Panthers – Fall 2022
4. Park Use Requests
  - a. PCS Cross Country Event – 11/1/22 – (approved TB 10/18/22)

**D. Special Projects**

1. East Park Playground Renovation Project – Update
2. Baseball Dugout Renovation Project – Complete
3. Pickleball – Update
4. RC Truck Track Proposal – Update
5. Sledding Hill – Update

**E. Sponsorships/Volunteerism**

1. Amenities and Beautification Committee
  - A. Adopt a Garden/Memorial Bench/Tree Project – Update
2. Community Clean-up Event Date – Saturday, April 22, 2023 – 9AM-3PM

**F. Signage and Community Awareness**

1. Wayfinding Signage – Update
2. Hamburg Historical Sign in Hamburg Cemetery – Sign Ordered, Dedication Date TBD

**G. Risk Management (Insurance/ADA)**

1. ADA Compliance in Parklands – No Update
10. Call to the Public
11. Committee Comments
12. Adjournment

**Next Meeting Date:**

**Parks Committee: November 22, 2022 – 3:00 p.m.**

# Pledge to the Flag



No  
Information





# Hamburg Township Parks & Recreation

Hamburg Township Offices  
10405 Merrill Rd., P.O. Box 157  
Hamburg, MI 48139  
(810)222-1124  
[www.hamburg.mi.us](http://www.hamburg.mi.us)

---

Hamburg Township  
Parks & Recreation Committee  
Regular Meeting  
Hamburg Township Hall  
Monday, September 27, 2022  
4:00 p.m.

1. Call to Order

Dolan called the meeting to order at 4:00 p.m.

2. Pledge to the Flag

3. Roll Call of the Parks & Recreation Committee

Board Members Present: Michniewicz, Dolan, Auxier, Muck, McCabe

Board Members Absent: None

Also Present: Deby Henneman, Township Coordinator, Duane Hoepfner, Building & Grounds, Member of Spicer Group – Jennifer Stewart

4. Call to the Public

A call was made with no response.

5. Approval of the Agenda

**Motion by Muck, supported by Dolan, to approve the agenda with the addition of PCS use of the Cross Country facilities.**

**VOICE VOTE: Ayes: 5      Absent: 0**

**MOTION CARRIED**

6. Approval of the Minutes

**Motion by Auxier, supported by Michniewicz, to approve the minutes from the August 29, 2022 Regular Meeting as presented.**

**VOICE VOTE: Ayes: 5      Absent: 0**

**MOTION CARRIED**

7. Correspondence

Hamburg Historical Museum newsletter was received and filed.

Copies of draft Parks Master Plan, Goals and Objectives & Action Item List, were distributed for use during discussion.

8. Current Business

A. Master Plan Renewal

1. Master Plan Draft Update – Jennifer Stewart, Spicer Group

Stewart stated the draft of the Goals and Objectives need to be reviewed/edited which she would like to do at the meeting today. The draft Action Items can be reviewed by the Committee and priorities/changes can be given to her within the next couple of weeks in preparation for the final version. She stated that the goals didn't change much overall, the redundancies were removed and the goals reorganized. The final draft will have the Action Items broken into Short, Mid, and Long Term goals, with a list of Ongoing items such as Maintenance, or larger projects that are done in a phased approach.

Dolan suggested that the ADA items be removed and put on a separate list.

2. Timeline Review & Next Steps – Jennifer Stewart, Spicer Group

Review of Final Draft – Parks Meeting – 10/25/22

Motion for Public Review – Township Board – 11/15/22

Public Review Period – 11/15/22 – 12/15/22

Recommendation of Adoption – Parks Meeting (Special) - 12/20/22

Public Hearing and Adoption – Township Board – 1/3/23

Master Plan Renewal Deadline: 2/1/23

9. Old Business

**A. Parks & Recreation Master Plan/Pending Grants/Supervisor Report**

1. Iron Belle Trail/Lakelands Trail

- a. Hay Creek Bridge Project – No update
- b. Trail Maintenance Project – Complete – Awaiting Funds
- c. Huron River free-span Bridge Project – No update

2. 5-year Master Plan Renewal – Update – Final Draft will be distributed for 10/25/22 meeting

3. West Park Trust Fund Grant – Preliminary Score Review

Stewart reviewed the preliminary score and stated going by the last few years, 330 is pretty good. She reviewed a few areas where her team feels some extra points could be awarded primarily: Park visibility (wayfinding signage), Sustainable Design Narrative edits, Renovation (year of construction confirmation), Quality of overall park design (reconfigure path to Halls Creek Access aka switchback), Universal Access Design Review (letters of support).

Staff to work with planner to finalize and upload Supplemental application by deadline of 9/30/22.

- a. Supervisor Hohl to obtain letter from Huron River Watershed Council
- b. Henneman to obtain letter for Accessibility Design Review (Senior Center assist)
- c. Spicer to obtain letter from ARC of Livingston for Accessibility Design Review

**B. Township Park Use Policy/Fee/Procedures**

1. Park Use Policy updates – Updates pending.

2. Community Center Policy & Fee change – Updates pending.

3. Administrative Fee Schedule – Updates pending.

**C. Administrative Services**

1. Park Coordinator's Report – September 2022 – Report received and filed

2. Senior Center Report – September 2022 – Report received and filed
3. Scholarship Request – None
4. Park Use Requests – Discussion of recent use of facilities by PCS Cross Country

Muck stated he had discussions with residents who were charged a \$10 parking fee for this event and wasn't happy. She wondered why the schools were charging fees for fields they were getting to use for free, in a public park.

Hardesty, President of H.E.R.O., addressed the committee. She stated there was a question raised, however, she was made aware that it is a common practice for them to charge for these types of events to cover the cost of the trackers. She was at the event, and did note that there were no extra portable toilets, that dogs were all over the place, and that there were about 12 schools participating in the event.

Dolan stated he received a complaint as well. The portable toilets the Township provides were unsuitable for public use after the event.

Doncea stated some of their signs are missing from the areas where Cross Country run through the Flyer's field.

**Motion by Muck, supported by Michniewicz, to direct staff to draft a letter to Pinckney Schools regarding their recent event, and the concerns the Committee discussed at today's meeting including: Public Safety concerns with ground and traffic control (including crossing of Merrill Rd.), the collecting of fees without inclusion of the practice on the application for use, lack of adequate number of sanitary facilities, allowance of pets during a large event which is prohibited under the Park Use Policy, and allowance of food/vendor presence without proper approval and/or paperwork on file. Staff is further directed to report back to the Committee with any response.**

VOICE VOTE: Ayes: 5 Absent: 0

**MOTION CARRIED**

#### **D. Special Projects**

1. East Park Playground Renovation Project – No updates. Staff will advise PCS Cross Country of the planned location.
2. Baseball Dugout Renovation Project – Painting is being completed, weather permitting.
3. Pickleball – Ground has been prepared for Court #3.
4. RC Car/Truck Track proposal – Discussion

Dolan stated some excavation has happened back by the RC field, and seeding is now needed.

Doncea stated if they are done with grading, something will definitely need to be done to prevent erosion.

Dolan stated whole area was being prepped for sledding.

Doncea stated poles were put out to prevent vandalism. He suggested meeting for a site walk and plotting out location for the future RC Auto/Truck track on a map.

Site Walk was scheduled for 10/5/22 at 5:00 p.m. at the Flyer's field.

#### **E. Sponsorships/Volunteerism**

1. Amenities and Beautification Committee – No updates

2. Commemorative Bench & Tree Program – Pads poured and trees installed at Village Trailhead

**F. Signage and Community Awareness**

1. Wayfinding Signage – No update
2. Winans/Hamburg Historical Marker – Hamburg Cemetery – New Marker Coming Soon

**G. Risk Management (Insurance/ADA)**

1. ADA Compliance in Parklands - No update
2. Pedestrian Crossings along Lakelands Trail – No update

10. Call to the Public

A call was made with no response.

11. Committee Comments

No comments.

12. Adjourn Meeting

**Motion by Auxier, supported by Dolan, to adjourn the meeting.**

**VOICE VOTE: Ayes: 5      Absent: 0**

**MOTION CARRIED**

Meeting adjourned at 5:45 p.m.

Respectfully submitted,



Debra Henneman  
Township Coordinator  
Parks, ADA, Grants, Ordinances

**Next meeting: Tuesday, October 25, 2022 – 3:00 p.m.**

**From:** [Francine Dolins](#)  
**To:** [Mike Dolan](#); [Deby Henneman](#); [hamburg-tw@miqvf.org](mailto:hamburg-tw@miqvf.org); [Pat Hohl](#); [Jason Negri](#)  
**Subject:** Hamburg Township's Summer Fun Fair  
**Date:** Tuesday, October 11, 2022 5:57:34 PM  
**Attachments:** [Letter to Protest Primates in Entertainment FINAL.pdf](#)

---

Dear Members of the Hamburg Township Government,

I am a resident of a nearby township and a neighbor to Hamburg. I am writing with regard to this past summer's (2022) Fun Fair held in Hamburg, where there was a Monkey Rodeo. In response to this particular event in the Fun Fair, I have collected approximately 50 signatures of primatologists (scientists who study nonhuman primates) from across the United States, asking you to kindly not engage this event and show again in future Fun Fairs due to the cruelty to the animals, both the monkeys and the dogs.

I, and my colleagues who signed this letter (attached), from US zoos, universities, and colleges, are willing to meet with you via zoom if you would like to discuss any aspect of this request. We would welcome a collegial dialogue with you about this issue.

I have also mailed a paper copy of this letter to the Hamburg Township office.

Thank you for considering this request. I look forward to hearing from you at your convenience.

Sincerely,

Francine Dolins, Ph.D.

Email. 





**Primatologists Protecting Primates – PPP**



October 10, 2022

Dear Hamburg Township Government Officials:

We represent a group of concerned scientists - ***Primatologists Protecting Primates (PPP)*** - from distinguished universities, zoological associations, and conservation organizations across the United States with expertise in the behavior, ecology, welfare, care, and the conservation of non-human primates. As a group, we support the prohibition of the use of nonhuman primates in entertainment other than in zoos accredited by associations such as the Association of Zoos and Aquariums (AZA) and the European Association of Zoos and Aquaria (EAZA). We actively support the prohibition of the importation and exportation, transportation, sale, and purchase of all species of non-human primates, with the goal to eliminate the trade of primates as pets and for entertainment. As professional primatologists who have extensive experience studying the ecology and behavior of wild primates, we fully support the extended protection for primates in the U.S. such as would be provided by **H.R. 3135**, the *Captive Primate Safety Act*. The International Primatological Society, the world's largest association of primatologists, has written their support for **H.R. 3135**.

This letter specifically highlights the cruel practice inflicted on monkeys for entertainment, referred to as “Banana Derby Races”, where capuchin monkeys are chained to dogs that are raced around in front of crowds of people from which the monkeys cannot escape. This situation creates terror and permanent emotional harm to a vulnerable animal: the monkey can't flee, and it can't fight, and it can't adapt or cope. The monkey can only suffer.

<https://www.npr.org/sections/13.7/2017/05/04/526779675/animal-activists-say-it-s-time-for-the-cowboy-monkey-rodeo-to-go-extinct>

Non-human primates (lemurs, lorises, monkeys and apes) are our closest living relatives and share many similarities with humans. They are longer lived than other similar-sized mammals, have large and complex brains, and have a long period of dependency on their parents. Primates are among the most endangered animal group in the world with approximately 68% of species on the brink of extinction, including [four of the six species of great apes](#). Although breeders and purveyors of the primate pet and entertainment trade in the U.S. would point to captive breeding programs as irrelevant to species survival, we note the following:

1. **Taking on the responsibility of non-human primates as pets and the use non-human primate in entertainment bears little resemblance to owning a cat or dog.** Primate pet owners and trainers of primates for entertainment are often unprepared for their long lifespans and complexity of their care. Primates are long-lived – often surviving 20 to 40 years, require specialized diets, may be stronger than humans, require prolonged





- interactions with members of their own species, and need cognitive stimulation as they are highly social and intelligent.
2. **Primates in the pet trade and in entertainment is big business.** Primate infants who have been separated from their parents and hand reared to increase “tameness” are in particular demand, are sold for thousands of dollars and are money-makers for owner/trainers who use these primates in commercial films and advertisements, traveling shows and circuses, and roadside and petting zoos. Removing a young primate from its parent is extremely cruel and results in significant behavioral and psychological problems. This tragedy only provides benefits to animal traders and entertainment trainers; the costs are extremely high to each primate. The degrading manner of exhibiting and handling these primates is presented to the public as “normal” and “acceptable”, instead of educating people about the sensitivity of these sentient animals, their welfare needs, and that primates are not domesticated and never can be.
  3. **Non-human primates are wild animals,** as such their behavior is never entirely predictable. Numerous examples of primate-induced injuries to long-term owners illustrate that the cuteness of infancy can give way to serious injury to handlers as they mature beyond infancy. Remedies such as filing down or removing teeth, and/or sedation are cruel and threaten the primate’s health.
  4. **Humans and non-human primates can share diseases.** The close relatedness of non-human primates to humans results in [disease transmission in both directions](#) prompting the CDC to recommend wearing protective equipment when in close proximity and handling them. Humans can transmit a variety of potentially deadly diseases to pet primates, e.g., hepatitis A, poliomyelitis, measles, tuberculosis, influenza. The highly contagious herpes B virus is endemic in Asian macaques, causing serious illness in humans, and bacteria and virus infections (e.g., *Giardia* and *Shigella*) can be transmitted from handling marmosets and other Neotropical primates.
  5. **Current state regulations are highly variable** ranging from no protection to a total ban of primates in the pet trade and in entertainment. **H.R. 3135** would provide uniformity among states to eliminate inter-state transfer of primates for the pet trade and for entertainment.

In writing this letter, our goal is to call attention to the cruel practice of primates used in entertainment, specifically in events such as the “Banana Derby Race” (e.g., Hamburg Michigan’s *Family Fun Fest* (<https://www.michiganfun.com/event/hamburg-family-fun-fest/>)). We ask for these types of events to be prohibited in the name of humane care and empathy for these primates (and any other non-human animals involved), as is stipulated in **H.R. 3135**.



**Primatologists Protecting Primates – PPP**



Sincerely yours,

The concerned scientists of **Primatologists Protecting Primates -**

Francine L. Dolins, Ph.D.

Paul A. Garber, Ph.D., Emeritus Professor of Anthropology, University of Illinois-Urbana

Jennifer Cramer, Ph.D.

Herbert H. Covert, Ph.D.

Tim Eppley, Ph.D.

Susan Lappan, Ph.D.

Christy K. Wolovich, Ph.D.

Kathy West, MS

Katherine R. Amato, Ph.D.

Cynthia L. Thompson, Ph.D.

Stacey Tecot, Ph.D.

Pat Shipman, Ph.D.

Sylvia Atsalis, Ph.D.

Robert Mitchell, Ph.D.

Alejandro Estrada, Ph.D.

Barb Smuts, Ph.D., Emeritus Professor of Psychology, University of Michigan

Marilyn Norconk, Ph.D.

Kaelyn Dobson, Ph.D.

Andrew J. Marshall, Ph.D.

Anne Savage, Ph.D.

Michelle Bezanson, Ph.D.

Katherine C. MacKinnon, Ph.D.

Barbara King, Ph.D.

Tremaine Gregory, Ph.D.

Brandi Wren, Ph.D.

Rafaela Takeshita, Ph.D.

Sofia Carrera, Ph.D. candidate

Abigail Ross, Ph.D.

Tabor Whitney, Ph.D. candidate

Susan Perry, Ph.D.

Tina Cloutier Barbour, Ph.D.

Lori K. Sheeran, Ph.D.

Liliana Cortés-Ortiz, Ph.D.

Taylor Weary, DVM/Ph.D. candidate

Casey Farmer, B.S., MA candidate

Noel Rowe, MFA

Laurie Kauffman, Ph.D.

Linda Marie Fedigan, Ph.D.

Julie Wieczkowski, Ph.D.





***Primatologists Protecting Primates – PPP***



Erik Patel, Ph.D.

Erin Riley, Ph.D.

Jason D. Wark, Ph.D., Animal Welfare Scientist, Animal Welfare Science Program, Lincoln Park Zoo

Katherine A Cronin, Ph.D., Senior Director of Lincoln Park Zoo Animal Welfare Science Program and  
Lester E. Fisher Center for the Study & Conservation of Apes

Raquel Costa, D.Sc.

Mary Lee Jensvold, Ph.D.



**HAMBURG  
TOWNSHIP  
MUSEUM**

P.O. Box 272  
7225 Stone Street  
Hamburg, MI 48139  
810-986-0190

info@hamburgmuseum.org  
<https://hamburgmuseum.org>



Karl Bangert  
*President*

Carrie Schulz  
*Vice President*

Linda Harrison  
*Secretary*

Suzanne Hines  
*Treasurer*

Pat Corr  
Heather Harrison  
Joyce Terry  
Alice Winkelman

**VISITING HOURS**  
11 am-3 pm  
Weds. & Sats.

# The Wave

*Newsletter of the Hamburg Township Historical Society • October 2022*

## Flyer Paranormal Returns for 2 Halloween-Time Investigations!

If you missed the June 5 ghost hunt at the museum, you'll have another chance to follow John Yost and his investigators from Flyer Paranormal (FP) as they move from room to room on the evening of Saturday, October 22. (And if you were there on June 5 and wonder if the disembodied voice that spoke the name "Jim" and the cool breeze that some people experienced will repeat themselves, then you might want to make a return visit!)

Two investigations will be conducted that evening: from 6:30-9 pm and 9:30 pm-midnight. Each session will be limited to 15 participants with tickets priced at \$35 per person. (FP is kindly donating half the price of each ticket to the museum.)

Attendees younger than 18 must be accompanied by an adult. To register, visit [Eventbrite.com](https://www.eventbrite.com) (search under Flyer Paranormal).

*Celebrate the Halloween season by joining the Flyer Paranormal investigation team at the museum Saturday, October 22.*



**On the Museum's Wish List...**a 65-piece Stanley Home Tool Kit with carrying case. Cost: \$54.99 at Home Depot.

DIVE INTO YOUR HISTORY

## GOODBYE AND THANK YOU TO PATRICIA MAJHER

Pat Majher, who's served as our museum administrator since 2020, has left the historical society to take a new job in communications and training at the Livingston County Convention and Visitors Bureau...and she will be missed. Under her leadership, the museum has developed five exhibits, introduced new events such as takeout teas, a lecture series on first families, and a history day camp, boosted our presence in the community, and helped set us on the path to financial independence by introducing an annual online auction.

We wish her well in her new adventure, which will include the opportunity to market the many businesses and tourist attractions in the Hamburg area!

**HELP US  
PRESERVE AND  
PRESENT  
THE HISTORY  
OF HAMBURG.  
JOIN THE  
HISTORICAL  
SOCIETY!**

## WHAT'S NEW?

- Have you stopped by the township hall lately? If not, make the time to visit and view our new exhibit titled "They Call It *What?* The Naming of Our Roads and Waterways."



*Pictured above is a Wyandot Indian who illustrates the meaning behind the name of our Huron River. The answer to this mystery may be found at 10405 Merrill Road from 9 am-5 pm Monday through Friday.*

## WHAT'S NEW CONTINUED

- October is the month in which we vote on filling openings on the board of directors. If you have a desire to serve in this capacity, please fill out the application at [www.hamburgmuseum.org/support](http://www.hamburgmuseum.org/support) and return it to the museum. If you'd prefer to contribute your time to a committee, you can find a volunteer application on the same webpage. Either way, we'd welcome your involvement and new ideas!

## WHAT'S COMING?

OCTOBER 22  
**Museum Ghost Hunt  
w/ Flyer Paranormal**  
6:30-9 pm and 9:30 pm-midnight  
(Tickets at [Eventbrite.com](https://www.eventbrite.com))

OCTOBER 31  
**Trick or Treating in  
the Village**  
Free parking at the museum

Name \_\_\_\_\_ Date \_\_\_\_\_  
Address \_\_\_\_\_  
City \_\_\_\_\_ State \_\_\_\_\_ Zip \_\_\_\_\_ Phone \_\_\_\_\_  
Email address\* \_\_\_\_\_

### ANNUAL DUES

- ☐ Individual \$20.00    ☐ Dual \$25.00    ☐ Family \$30.00  
☐ Business \$50.00    ☐ Life \$300.00 (one lifetime payment)

\*ADD \$12 to receive paper newsletters via USPS; email copies are free.

Please make your check payable to the Hamburg Township Historical Society. Mail it with this form to P.O. Box 272, Hamburg, MI 48139 or drop it off at the museum at 7225 Stone Street during visiting hours.



DRAFT

# PARKS AND RECREATION MASTER PLAN

HAMBURG TOWNSHIP | LIVINGSTON COUNTY

2023-2028





### ACKNOWLEDGEMENT

A public hearing on the Hamburg Township 2023-2028 Parks and Recreation Master Plan was held on **month day, 202\_**. The Parks and Recreation Master Plan was adopted by the Hamburg Township Board of Trustees on **month day, 202\_**.

### TOWNSHIP BOARD OF TRUSTEES

Patrick J. Hohl, Supervisor  
Mike Dolan, Clerk  
Jason Negri, Treasurer  
Chuck Menzies, Trustee  
Cindy Michniewicz, Trustee  
Bill Hahn, Trustee  
Patricia Hughes, Trustee

### PARKS AND RECREATION ADMINISTRATION

Deby Henneman, Township Coordinator  
Parks, ADA, Grants, Ordinances

### PARKS AND RECREATION COMMITTEE

Mike Dolan, Director, Clerk  
Cindy Michniewicz, Township Board Trustee Representative  
Cliff Auxier, Member at Large  
Jeffrey Muck, Member at Large

#### PREPARED BY:

Hamburg Township  
Parks and Recreation Committee  
Hamburg Township, MI 48139  
[www.hamburg.mi.us](http://www.hamburg.mi.us)



#### WITH ASSISTANCE FROM:

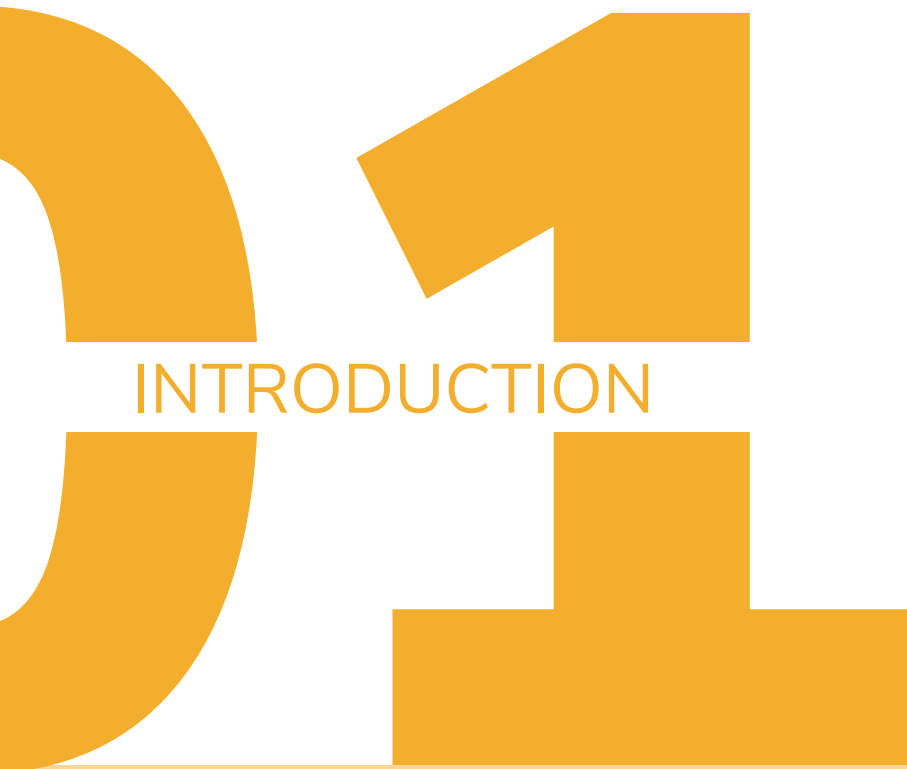
Spicer Group, Inc  
Saginaw, MI 48607  
[www.spicergroup.com](http://www.spicergroup.com)  
Project #: 132605SG2022



## TABLE OF CONTENTS

<b>1 – Introduction</b>	<b>3</b>
<b>2 – Community Description</b>	<b>6</b>
Regional Setting	7
Demographics	8
Natural Resources	10
Transportation	13
<b>3 – Administrative Structure</b>	<b>14</b>
Introduction	15
Maintenance and Operations	17
Funding and Budget	17
Additional Partnerships	17
Past Grant History	22
<b>4 – Recreation Inventory</b>	<b>23</b>
Parks & Recreation Inventory	24
<b>5 – Community Input</b>	<b>43</b>
Community Input	44
<b>6 – Goals and Objectives</b>	<b>55</b>
Goals and Objectives	56
Action Plan	62
<b>7 – Planning Process</b>	<b>71</b>
Process	72
Review and Adoption	72
<b>8 – Appendix</b>	<b>74</b>
Appendix A: Grant History	
Appendix B: Public Input Results	
Appendix C: Sources of Recreation Grant Funding	
Appendix D: Mike Levine Lakelands Trail State Park Map	
Appendix E: Great Lake to Lake Trail Map	
Appendix F: Huron River Water Trail Map	
Appendix G: Living Legacy Land Map	
Appendix H: ADA Transition Plan	
Appendix I: Adoption Documentation	

# DRAFT



INTRODUCTION

IN THIS CHAPTER

04 - INTRODUCTION

Hamburg Township has developed this Parks and Recreation Master Plan to serve as a guide in future decision-making regarding recreation facilities improvements and the development of new recreation opportunities for the next five years. This document is the basis for policy implementation of improvements and new initiatives that will meet the recreational goals and interests of Hamburg Township.

Before any Parks and Recreation Master Plan is adopted and enacted, it is first important to understand the needs of the current residents, existing recreational opportunities, the demographic characteristics of the area, program initiatives, and projects and facilities that are best suited for the community. This Plan was compiled based on public input and suggestions from residents, officials, and other community partners with the collaboration of Spicer Group and Hamburg Township Parks and Recreation Committee. The community was a key component in creating this plan. Together, the voices of Hamburg Township have united to develop a Parks and Recreation Master Plan that will enhance community members' and visitors' experiences.

The foundation for the development of the Hamburg Township Parks and Recreation Master Plan was based on the following goals:

- Involve the community throughout the process of updating the Parks and Recreation Master Plan.
- Identify and map existing Township-owned/operated recreation facilities.
- Build common ground among the Hamburg Township residents and community partners in addressing the future recreational needs and priorities of the Township.
- Enable the Township to be eligible for financial assistance based on the Parks and Recreation Master Plan.
- Facilitate interagency collaboration in establishing parks and recreation goals, objectives, and actions in partnership with Hamburg Township and other local groups.
- Support the implementation of improvements for barrier-free access to Township parks and recreation sites.





The Township prides itself on its parks and recreation system and the benefits it brings to residents and visitors. Parks and recreation systems provide three (3) primary benefits which make them essential to the community:

- **Economic value**
  - Parks improve the local tax base and increase property values. It is proven that private property values increase the closer such land is to parks. This increase in private property value increases property tax revenues and improves local economies.
- **Health and Environmental Benefits**
  - Parks are the places that people go to be healthy and stay fit.
  - Parks and recreation programs and services contribute to the health of children, youth, adults, and seniors.
  - Parks and protected public lands are proven to improve water quality, protect groundwater, prevent flooding, improve the quality of the air we breathe, provide vegetative buffers to development, produce habitat for wildlife, and provide a place for children and families to connect with nature and recreate outdoors together.
- **Social Importance**
  - Parks provide gathering places for families and social groups, as well as for individuals of all ages and economic status, regardless of their ability to pay for access.

The intent of this Plan is to extend the many benefits of the Township's parks to all members of the Hamburg Township community.

In conclusion, Hamburg Township officials intend to use this Plan as a guide for their work on all future recreation and park projects within the Township. It is also a strategic document that articulates specific goals to various agencies and organizations that fund local recreational and park improvement projects. Specifically, this plan is developed in accordance with the Guidelines for Development of Community Parks and Recreation Plans published by the Michigan Department of Natural Resources (MDNR). A five-year, MDNR-approved Parks and Recreation Master Plan is necessary for Hamburg Township to pursue MDNR-administered grants. This Parks and Recreation Master Plan is written for Hamburg Township and covers all aspects of recreation within the Township over a five-year period from 2023-2028.

# DRAFT

A large, stylized blue number '32' is positioned on the left side of the page. The number '3' is on the left, and the number '2' is on the right. The text 'COMMUNITY PROFILE' is written in a smaller, blue, sans-serif font across the middle of the number '2'.

## COMMUNITY PROFILE

### IN THIS CHAPTER

07 - REGIONAL SETTING

08 - DEMOGRAPHICS

10 - NATURAL RESOURCES

13 - TRANSPORTATION

Hamburg Township is located in the southeast region of Michigan's lower peninsula. It is located along the southern border of Livingston County. Within the County, Hamburg Township is bordered by Genoa Township to the north, Putnam Township and the Village of Pinckney to the west, and Green Oak Township to the east. To the south is Webster Township of Washtenaw County. Hamburg Township contains the unincorporated communities of Hamburg, Lakeland, and Pettysville. The community of Lakeland is in the center of the Township surrounded by Oneida Lake and Zukey Lake. This area is known as a summer retreat area for residents of Southeastern Michigan. Pettysville is in the vicinity of Pettysville and Rush Lake Roads.

## MAP 1 – REGIONAL LOCATION



In this section, background information from the U.S. Census was used to analyze Hamburg Township's current demographic conditions. The following section analyzes Census-based data on overall population trends, housing characteristics, and economic information within the Township to present an overall demographic condition analysis.

The information presented in this chapter uses the most recent Census Data from the 2020 Census and 2010 Census, the 2020 American Community Survey, and the Southeast Michigan Council of Governments (SEMCOG). The Township is compared to Livingston County and the State of Michigan.

Understanding the characteristics of the population is helpful when evaluating parks and recreation facilities and needs. The tables below provide a comparison of key demographic data between Hamburg Township, Livingston County, and the State of Michigan.

### PEOPLE & POPULATION

When a community plans for the future, they must consider the composition of the population today and also consider its likely future composition. Understanding where the Township has been and where it is likely to go is essential to projecting future needs. Table 1 provides an analysis of key population data for Hamburg Township compared to Livingston County and the State of Michigan.

TABLE 1 - HAMBURG TOWNSHIP PEOPLE & POPULATION DATA

Select Census Data for Hamburg Township, Livingston County, and the State of Michigan			
	Hamburg Township	Livingston County	State of Michigan
Population – 2010 Census	21,165	180,967	9,883,640
Population – 2020 Census	21,259	193,866	10,077,331
Percent of Population Change Between 2010-2020	0.004%	7.1%	2.0%
Percent of Population 65 & Older	21.0%	18.8%	17.2%
Percent of Population Under 18	18.5%	20.5%	21.5%
Median Age	48.1	43.7	39.8
Percent with a Bachelor's Degree or Higher	42.9%	36.5%	30%

**Population Growth:** Hamburg Township's population in 2020 was 21,259, a 0.004% increase from 21,165 in 2010. While increasing, it remains slower than Livingston County as a whole (7.1%) and the State of Michigan (2%). The Southeast Michigan Council of Governments (SEMCOG) provides a regional economic and demographic forecast for communities within Southeast Michigan. In SEMCOG's most recent development forecast, Hamburg Township is projected to continue to grow by approximately 9% through 2045.

**Senior Citizens:** Of the three communities in Table 1, Hamburg Township has the largest population of residents older than 65. As the US population ages, this population is also expected to grow. Seniors have different needs in recreation facilities than other ages groups. They tend to prefer more passive recreation options such a pathways and recreation centers versus playgrounds. Often, they live on a fixed income, therefore, public parks can be crucial to quality of life. They serve as gathering spaces and activity centers for both physical and mental well-being.

**Educational Attainment:** The highest levels of educational attainment result in a higher skill set and ultimately contribute to the local job growth. Within Hamburg Township 42.9% of residents older than 25 years have earned at least a bachelor's degree, which is significantly higher than Livingston County as a whole (36.5%), as well as the State of Michigan (30%).

## HOUSING & ECONOMICS

Understanding what a typical household looks like within the Township is an important factor in parks and recreation planning. This data demonstrates how park facilities and programs will be utilized by residents. Table 2 provides an analysis of key population data for Hamburg Township compared to Livingston County and the State of Michigan.

TABLE 2 - HAMBURG TOWNSHIP HOUSING & ECONOMIC DATA

Select Census Data for Hamburg Township, Livingston County, and the State of Michigan			
	Hamburg Township	Livingston County	State of Michigan
Percent of Population Below Poverty Line	4.7%	5.3%	13.7%
Median Household Income	\$92,670	\$84,274	\$59,234
Average Household Size	2.74	3.06	2.45
Median Housing Value	\$269,500	\$256,100	\$162,600
Renter-Occupied Housing as % of Total Occupied Units	6.1%	14.9%	9.4%

**Socioeconomic Status:** The household median income in the Township is \$92,670 which is about \$12,000 higher than Livingston County and \$33,000 higher than the State of Michigan. Hamburg Township's poverty rate is 4.7% which lower than the County average of 5.3% and significantly lower than the State average of 13.7%. These indicators point to a relatively strong economic base for the Township. A strong economic base and educational foundation is typically associated with a population that has a strong desire for quality parks. The Township should continue to invest in park facilities and programming. Parks are a tangible reflection of the quality of life in a community. They provide identity for citizens and are a major factor in the perception of quality of life in the community.

**Residents in Multi-Family Housing, Apartments, and Renters in General:** While the Township retains a lower percentage of renter-occupied housing units at 6.1% of the population, these residents in high-density housing have a greater need for open space and recreational facilities because they do not have large yards or open areas of their own.



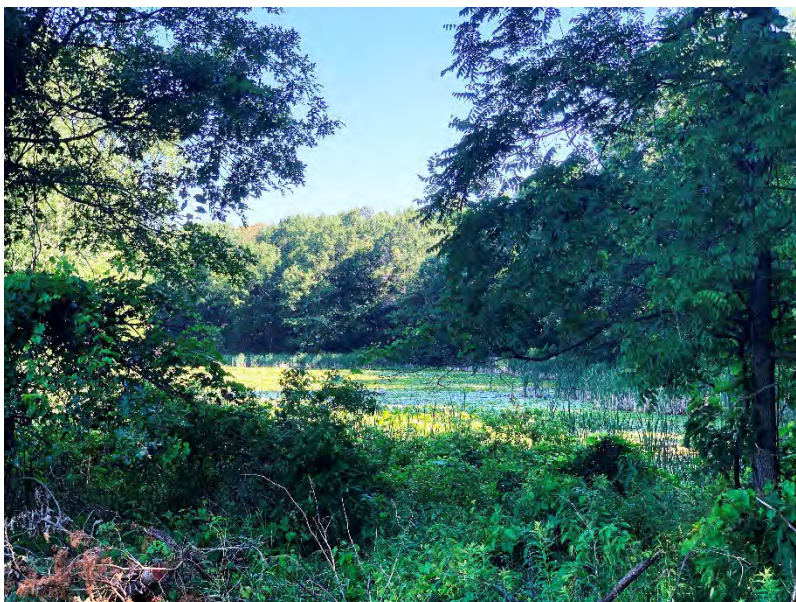
## NATURAL RESOURCES

When studying parks and recreation resources in a community, it can be worthwhile to examine significant natural resources that may need conservation or protection. A large portion of the land area in the Township contains natural resources that have a value to the residents. However, it is not realistic to expect that all of that land will be preserved in a natural state in perpetuity. The Township has continued to encourage land developers to preserve natural features to the greatest extent possible when making plans for new construction through the Township's open space preservation program. Natural features are not easily restored after they are impaired. These natural features provide numerous existing and potential parks and recreation opportunities for residents.

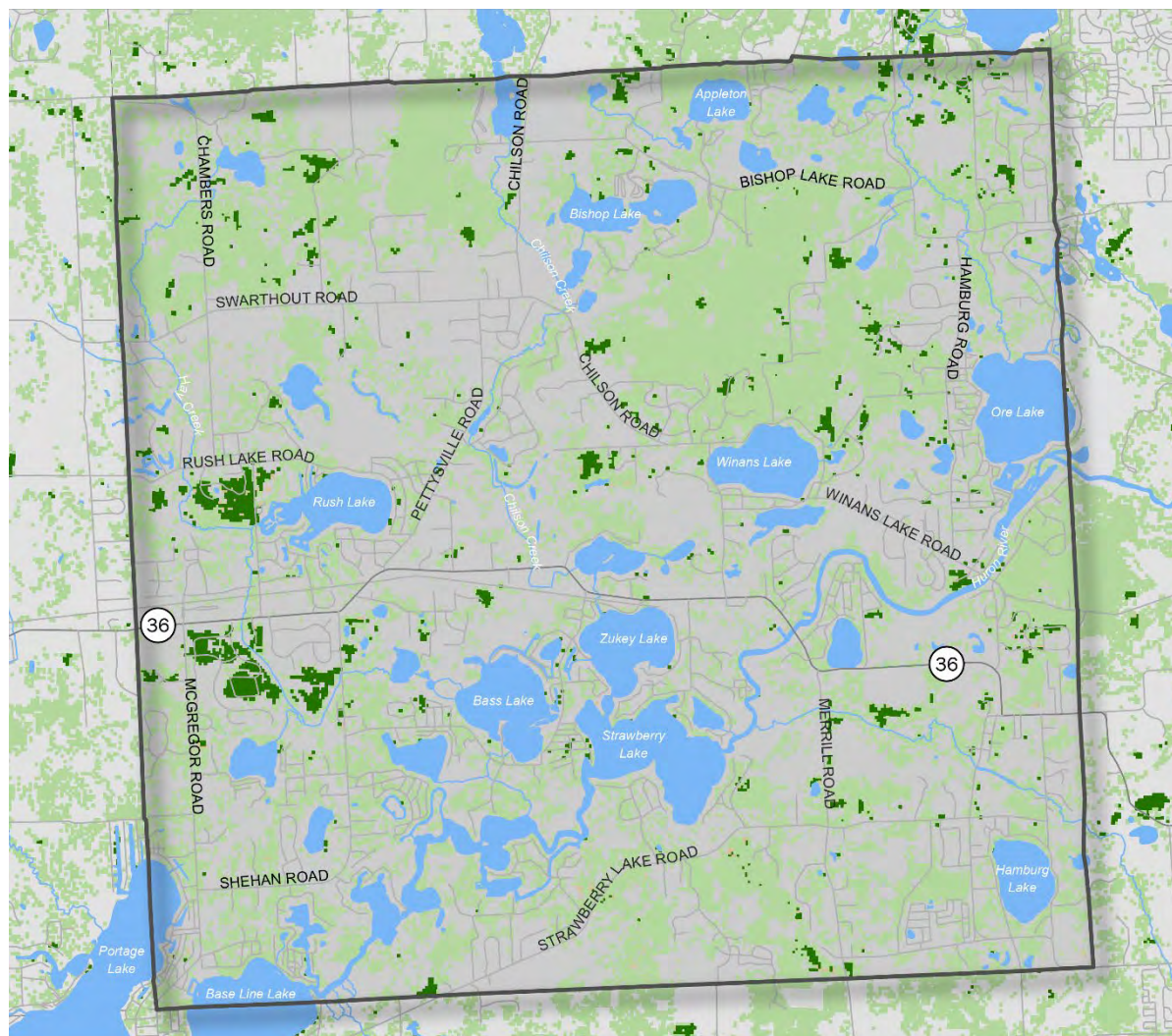
The Township has several lakes connected by the Huron River, and with the exception of Mohican Lake and Sunset Lake, all are surrounded by relatively high-density residential development. Access to water bodies for active and passive purposes is an important recreation issue along with limiting the impact of potential development around the lakes. The Huron River area in Hamburg Township has been designated as a "country-scenic" river area under the Michigan Natural River Act of 1970 which is defined as a river in an agricultural setting, with pastoral borders, some homes and is readily accessible.

Wetland areas are scattered throughout the Township, with the largest concentration in the centrally located Lakeland area. The wetlands, as identified by Map 3 below, show mostly combinations of wetlands with wetland soil areas. Wetlands connected to or within 500 feet of an inland lake, pond, river, or stream, and/or those five acres in size or greater are regulated by Part 303, Wetland Protection, of the Natural Resources and Environmental Protection Act, Public Act 451 of 1994.

Woodland areas are commonly located adjacent to the wetland areas throughout the Township. The majority of the woodlands are composed of water tolerant species such as ash, silver maple, cottonwood, tamarack, willow, and sycamore. Where natural vegetation meets the water's edge, areas of unique scenic resources and wildlife habitat are found. In the future, the lands highlighted on Map 2, provided below, would be priority conservation lands for any future land acquisition or park improvements and should be considered in any new development of park land. Similarly, SEMCOG has identified significant tracts of land in the northern portion of the Township as Living Legacy Lands. The Living Legacies Initiative is facilitated by the Michigan Department of Natural Resources (MDNR) and works with many partners to identify, restore, and manage those natural places in Michigan that, together, best represent the diversity of Michigan's biological heritage. Living Legacies is about making sure that these many different natural areas and the life within them become a long-lasting legacy shared with residents and visitors. A map of Living Legacy Lands within the Township can be found in Appendix G.



## MAP 2 – WOODLANDS



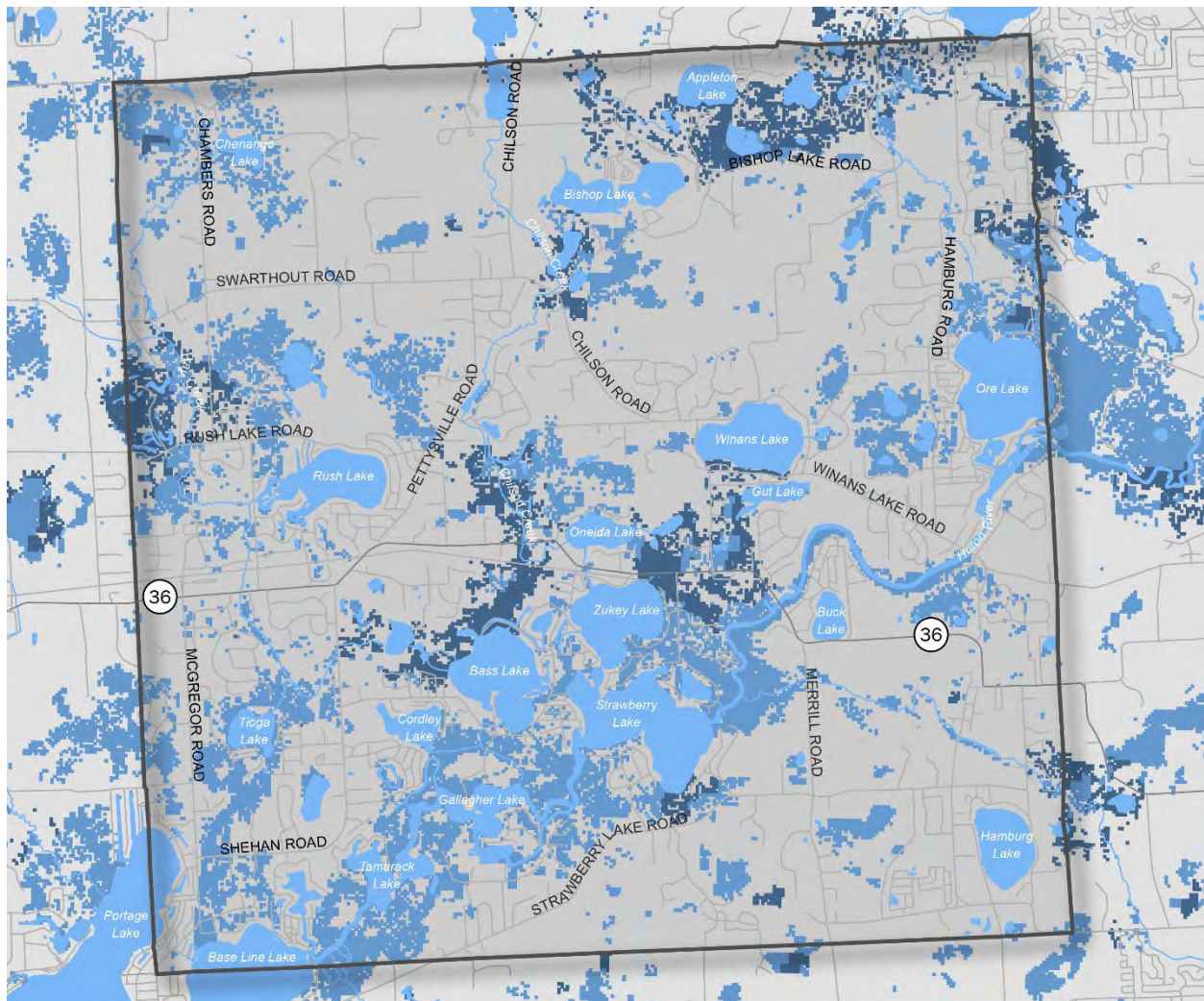
### LEGEND

- LAKES/RIVERS
- DECIDUOUS FOREST
- EVERGREEN FOREST
- MIXED FOREST





MAP 3 - WETLANDS



### LEGEND

- LAKES/RIVERS
- SCRUB/SHRUB WETLANDS
- FORESTED WETLANDS ▲

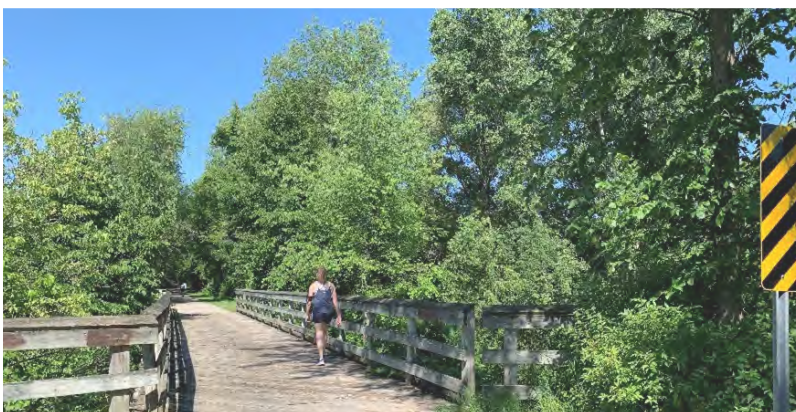


Township residents rely on the road and pathway networks to access regional parks and recreational facilities. The Township has no mass public transportation busing or railways at this time, as the transportation system is oriented toward the automobile. The existing road system consists of an irregular network of roads, which are situated around waterbodies and other significant natural resources.

Livingston County maintains a dial-a-ride public transportation system called the Livingston Essential Transportation Service (LETS). LETS allows anyone in the county call and request a bus service to reach their destination. LETS offers a 50% reduced fare for disabled persons or seniors age 60 and above. This bus is ADA accessible and equipped with a wheelchair lift.

The Township is linked to the transportation network via M-36, which intersects with US-23 in neighboring Green Oak Township. Major north-south roads within the Township are Hamburg Road, Chilson Road, Pettysville, Whitewood, and McGregor Roads. Other arterial east-west roads within the Township are M-36, Strawberry Lake Road, and Winans Lake Road. The system of roads in and near Hamburg provides adequate access by automobile to recreation facilities in the Township and in surrounding communities. M-36 provides connections to regional and state facilities, as well as shopping and entertainment facilities in Green Oak Township and Oakland County. Other shopping and entertainment facilities in Brighton, Howell, and Ann Arbor are easily accessed by taking M-36 to US-23.

Access to recreation facilities can be difficult for certain segments of the population, primarily children and the elderly. Existing recreation facilities are scattered throughout the Township, thus located a considerable distance from much of the population. The Township has made inroads to expand nonmotorized transportation routes such as bike paths, walkways, and trails to provide for more equitable access to the park system. A particular emphasis has been placed on increasing access to the Mike Levine Lakelands Trail State Park, which is a segment of the larger Great Lake-to-Lake Trail and extends through the Township. Although progress has been made, the Township should continue to focus on building complete streets infrastructure which can be linked to improved safety for all uses, improved human health by encouraging walking and biking, decreased vehicular traffic, reduced dependence on gasoline and other petroleum products, and improved air quality. Complete streets policies provide for more transportation options, fosters more livable communities, and improves quality of life for all ages and socio-economic groups in the Township.



# DRAFT

# OS

## ADMINISTRATIVE STRUCTURE

### IN THIS CHAPTER

15 - INTRODUCTION

17 - MAINTENANCE AND OPERATIONS

17 - FUNDING AND BUDGET

17 - ADDITIONAL PARTNERSHIPS

22 - PAST GRANT HISTORY

The Township does not have a formal Parks and Recreation Department so the operations, maintenance, and improvements to Hamburg's recreational facilities are the responsibility of the Clerk's Office. The structure of Parks and Recreation begins at the top with residents, to the Township Board, then the Parks and Recreation Committee who serves as a recommending body to the Township Board. Daily oversight of the parkland facilities is conducted by the Clerk's Department staff. In addition, staff coordinates the efforts of the citizens, volunteers, and recreational providers who provide services such as: programming, project assistance, and funding matches.

On December 21, 2010, the Township Board accepted the Parks and Recreation sub-committee's recommendation to reconstruct the Parks and Recreation Board (run by volunteers) and to create the new Community Recreational Services Organization (CRSO) committee. On November 20, 2012, the CRSO was renamed Parks and Recreation Committee and was formed to be a recommending body to the Hamburg Township Board of Directors. Although the original Parks Board was dissolved, the volunteers and recreation providers still play an important role under the current structure by providing time and energy for the construction of capital improvements, as well as ongoing maintenance of park facilities. The fees collected for field use provides funds for the maintenance of the parklands and their improvements.

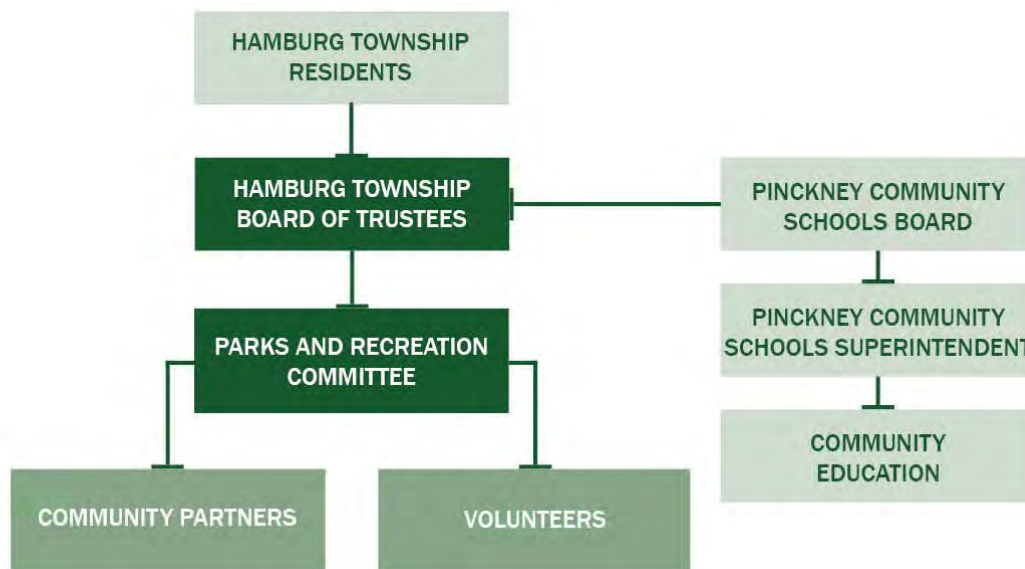


A program for the sale and installation of Commemorative Trees and Benches, along with an Adopt-A-Garden program, is managed by the Clerk's Department and provides a way for the community to fund amenities in the parkland and along the stretch of the Mike Levine Lakelands Trail that runs through the Township. These programs allow the community members to take an active role in the beautification of their Township facilities while providing residents and visitors with pleasing respites and gardens to enjoy. The projects that are organized through this program are fully funded by the donor and provide a long-lasting tribute to their loved one.

The structure of Community Education, as shown in Figure 1 below, is an offshoot of the Pinckney Community Schools. Community Education does not report directly to any Hamburg Township government entity but rather, works with the Township to provide recreational opportunities to their community. Their structure starts at the top with the Pinckney Community School Board, with the Superintendent reporting to the School Board, and Community Education in turn reporting to the Superintendent. Community Education serves Hamburg and areas in six other townships outside of Hamburg, including the Village of Pickney, Genoa Charter Township, Dexter, Marion, Unadilla, Webster, and Putnam Townships.

There are a number of community partners and providers that serve the recreational needs of the residents, including but not limited to, baseball, football, cheer/pom, rugby, radio-controlled activities, and soccer. Given the importance of the various Township community partners, they have been included in Figure 1 below.

FIGURE 1 – TOWNSHIP ADMINISTRATIVE STRUCTURE





## MAINTENANCE AND OPERATIONS

Operations and maintenance of park facilities are the responsibility of the Township Clerk's office as the Township does not have a formal Parks and Recreation department.

## FUNDING AND BUDGET

Hamburg Township's parks are financed through the Township's General Fund. The Township charges service fees for the organized use of parklands by recognized community partners and otherwise, the use of pavilions, disc golf, and community center. These fees are put into the General Fund.

Primary funding for the operation and short and long-term maintenance of the Lakelands Trail, Township Parks, and the Hamburg Senior/Community Center is covered by the General Fund.

Additional funding sources include park facility user fees, donations from individuals/private organizations, and grants awarded for specific projects.

The Senior/Community Center charges a \$5 membership fee annually that goes into the General Fund. This membership fee is waived for individuals aged 90 or older.

TABLE 3 - BUDGET & FUNDING

	CURRENT YEAR 2021-2022	NEXT YEAR 2022-2023
OPERATION & MAINTENANCE	\$265,795	\$449,685
PROGRAMMING	\$48,216	\$39,400
CAPITAL EXPENDITURES	\$77,426	\$120,000
TOTAL	\$391,437	\$609,085

## ADDITIONAL PARTNERSHIPS

### VOLUNTEERS

In Hamburg Township, volunteers have been significant in helping the Township maintain their various gardens and plantings throughout the community.

The Amenities & Beautification Committee, commonly known as the ABC Committee, is a sub-committee made of volunteer members in the community who maintain all gardens, flower beds, sign beds, and plants annually. This sub-committee makes recommendations to the Parks and Recreation Committee and will plan and execute projects like:

- Planting and maintenance of Parkland/Trail gardens
- Installation of sculptures and outdoor artwork
- Beautification of Cemetery and support of historical tours
- Development of nature/linking trails as supported by this Plan
- Installation of bike racks and repair stations
- Installation of identification and interpretive signate along trails
- Support of volunteer force for garden projects

The Township's Adopt-A-Garden program provides volunteers or groups of volunteers with the opportunity to care for and maintain a garden of their choosing within the Township. The Township has a list of available gardens for adoption. The Township works with each group that adopts a garden to determine plants and supplies needed to care for the garden. Donated materials/supplies are desired, but the Township will provide anything not already covered. All plants and designs for the gardens must be approved by the Parks and Recreation Committee. The Township has a successful community garden located between the pickleball courts and senior center.

The Township also receives volunteer assistance installing and maintaining benches for their Commemorative Bench or Tree Program. The commemorative Bench or Tree Program allows the public to donate funds for the installation of a tree or bench to be placed within a Township Park. Each tree or bench includes a commemorative plaque to pay tribute to the donor.



## PINCKNEY COMMUNITY SCHOOLS SYSTEM

Hamburg Township collaborates with the neighboring Pinckney Community Schools System to provide parks and recreation opportunities to their students. The schools use the parks for their cross country meets at Manly W. Bennett Memorial Park – East.

### Community Education

Within Pinckney Schools is a department called Community Education. This entity does not report directly to Hamburg Township but serves Hamburg Township and other area townships with preschool, latchkey, and enrichment classes for youth and adults such as:

- Aerobics
- Arts & Crafts
- Baton Twirling
- Belly Dance
- Youth Basketball
- CPR & First Aid
- Dance Classes
- Enrichment Classes
- Financial & Estate Planning
- Youth Golf
- Youth Gymnastics
- Adult Hula Hooping
- Hypnosis
- Lifeguard Certification
- Kickboxing
- Marine Safety
- Martial Arts
- Mom & Tot Playgroup
- Music Classes
- Pilates
- Pinckney Aquatic Club (PAC)
- Pinckney Players
- Preschool
- Soccer Camp
- Swimming
- Tennis Lessons
- Volleyball
- Yoga
- Zumba

## FRIENDS OF THE LAKELANDS TRAIL

The Friends of the Lakelands Trail group is made up of volunteers to maintain and improve the Mike Levine Lakelands Trail State Park.

## RECREATIONAL PROGRAMMING

The Township does not directly program recreational opportunities but instead collaborates with community partners and organizations to provide common community recreational opportunities.

The Hamburg Township Senior/Community Center offers several programs, classes, activities, and volunteer opportunities for individuals ages 55 and older. Other programs are offered by repeat community partners like HCSC, HERO, PYA, PHBSA, and Flyer's RC Club. Recognized community partners include:

- East Michigan Panthers (soccer) – The East Michigan Panthers is a 501 (c)(3) organization offering competitive soccer opportunities for homeschool families in Southeast Michigan. The organization offers competitive Boys' Middle School (5th-8th), Men's JV and Varsity, Women's Varsity and Girls' Middle School (5th-8th) soccer teams with an emphasis on Christian values. Additional information can be found at: [www.empantners.com/](http://www.empantners.com/)
- Hamburg Community Soccer Club (HCSC) - HCSC is a non-profit, 501(c)(3) community youth soccer organization that manages boys and girls soccer teams ranging from ages three to 19. The club is comprised of players from Hamburg Township, Pinckney, Whitmore Lake, Brighton, Dexter, South Lyon, Howell, Gregory, and Ann Arbor. All HCSC outdoor activities and home games are held at West Bennett Park. Additional information can be found at: [www.hamburgsoccer.org](http://www.hamburgsoccer.org)
- Pinckney Hamburg Baseball and Softball Association (PHBSA) - The Pinckney Hamburg Baseball & Softball Association is a non-profit 501(c)(3) organization completely staffed by volunteers. The purpose of the (PHSBA) is to conduct an amateur youth baseball and softball program for boys and girls ages four and older in the Pinckney Hamburg community. The mission of the P.H.B.S.A. is to provide opportunity and a fun, cooperative learning environment for children who participate in the Association's programs. Home facilities for PHSBA is Manly W. Bennett Park within Hamburg Township. Additional information can be found at: [www.pickneyball.org/home](http://www.pickneyball.org/home)
- Go Sports LLC (baseball) – Go Sports LLC is a sports organization, headquartered in Green Oak Township, dedicated to providing youth athletes the opportunity to play competitive baseball and fastpitch games locally and on travel teams. Go Sports teams frequently utilize the Manly W. Bennett Memorial Park fields for practice and home games. Additional information can be found at: [www.gosportsllc.com/](http://www.gosportsllc.com/)



- Pirate Youth Athletics (PYA) - Pirate Youth Athletics is a non-profit youth sports organization that specializes in Youth Tackle Football and competitive Cheer/Pom. PYA is comprised of players from the greater Pickney area and works as a pipeline to the Pickney Middle School and High School football and competitive cheer/pom programs. PYA utilizes the Pickney School facilities as their home base. Additional information can be found at: [www.pyathletics.org/home](http://www.pyathletics.org/home)
- Hamburg Flyers RC Club - The Hamburg Flyers RC Club is a non-profit, 501(c)(3) organization serving Hamburg Township and surrounding communities and provides opportunities for youth, adults, veterans, and senior citizens to build, fly, and discuss model aircraft. The RC field is located in East Bennett Park. Additional information can be found at: [www.hamburgflyers.org](http://www.hamburgflyers.org)
- Hamburg Enhanced Recreation Organization (H.E.R.O.) - H.E.R.O. is a non-profit, 501(C)(3) organization formed in 2005 for the purpose of supporting the continued development of recreational opportunities and facilities within Hamburg Township. H.E.R.O. plans, organizes, and hosts the annual Hamburg Family Fun Fest. H.E.R.O.'s goal is to provide an affordable, convenient, close to home, family event offering daily activities such as shows, concerts, a petting zoo, circus, etc. free of charge. The intent of the Hamburg Family Fun Fest is to help fund future enhancements of the recreational programs in the Hamburg area through a grant process when funds are available. Additional information can be found at: [www.hamburgfunfest.com](http://www.hamburgfunfest.com)

## Adult Sports

Offered at the Manly W. Bennett Memorial Park, adult sports include:

- Rugby (Dexter Rugby)

## Youth Sports

Offered at the Manly W. Bennett Memorial Park and Pickney Community School Facilities, youth sports include:

- Soccer (HCSC)
- Football (PYA)
- Baseball & Softball (PHBSA)
- Rugby (Dexter Rugby)



## Library

Located adjacent to the Hamburg Senior Center, the Hamburg Community Library offers a variety of materials to the public, as follows:

- |                          |                       |
|--------------------------|-----------------------|
| ▪ Audio Books            | ▪ Literacy Collection |
| ▪ Books                  | ▪ Magazines           |
| ▪ DVDs                   | ▪ Music CDs           |
| ▪ E-Books                | ▪ Newspapers          |
| ▪ Enrichment Programming | ▪ Sheet Music         |





### Senior Programming

The Hamburg Senior Community Center offers a multitude of activities and classes for the community's senior residents, as follows:

- Exercise Classes Provided by Michigan Rehabilitation Specialists
- Yoga
- One-on-One Computer Lessons
- Watercolor Painting
- Acrylic Painting
- Card-Making
- Origami
- Quilting
- Crafting
- Flower Arrangement
- Assistance with Veteran's Benefits
- Euchre
- Pinochle
- Mah-Jongg
- Ripple
- Travel Excursion

## PAST GRANT HISTORY

The following list identifies grant projects that were awarded through the Michigan Department of Natural Resources, as reported by DNR Grants Management. This list does not reflect the other grant sources that have been used for recreation projects.

TABLE 4 - PAST GRANT HISTORY: HAMBURG TOWNSHIP

TITLE	PROJECT #	YEAR	GRANT AMOUNT	DESCRIPTION
MANLY W. BENNETT MEMORIAL PARK	26-01104 B	1980	\$25,000	Concession/restroom building, utilities, sewage disposal, site restoration & landscaping, parking area, LWCF sign.
MERRILL FIELD	26-01274	1983	\$29,133	Landscaping, entrance signs, road & parking lot improvements, play structure, asphalt walkway, litter barrels, bleachers, service gate, & LWCF sign.
MANLY W. BENNETT MEMORIAL FIELD	BF89-092	1989	\$100,800	Division A soccer field, Division B soccer field, lighting for 2 ballfields, parking lot, 4 shuffleboard courts, picnic tables, picnic pavilion, playground equipment, 2 basketball courts, 9 bleachers, 4" well, 2 tennis courts, 2 batting cages.
MANLY W. BENNETT PARK	CM99-077	1999	\$247,000	Nature trails (8,000 LF), paved trails (8-ft wide, 3,800 LF), boardwalk (600 LF), fishing dock, picnic tables, picnic shelter with storage shed, playground equipment.
LAKELANDS TRAIL ACCESS IMPROVEMENTS	TF13-014	2013	\$125,400	Paved trail (to complete Lakelands Trail in Hamburg Township), trailhead parking & amenities, natural resource access & protection. Project included 2 phases to completely construct the universally accessible development project.
HAY CREEK BRIDGE RENOVATION	TF20-0145	2020	\$50,000	Replacement of bridge decking on pedestrian bridge along the Lakelands Trail.

DRAFT

# 04

RECREATION INVENTORY

IN THIS CHAPTER

24 - PARKS & RECREATION INVENTORY

## PARKS & RECREATION INVENTORY

The following inventory studies the parks and recreation facilities in Hamburg Township. This inventory was updated by the planning consultants in the summer of 2022 and verified by Township staff. The text below includes an in-depth description of Township-owned parks, park classifications, and ADA accessibility ratings. Table 4 summarizes park amenities in a tabular form. This chapter also contains a brief discussion of other recreational facilities in the Township and region.

### ACCESSIBILITY

Creating a park system that is safe, accessible, and usable to all individuals, including those with disabilities, is essential. A grading system has been developed by the Michigan Department of Natural Resources to easily identify those parks and facilities which are most and least accessible, based on the Americans with Disabilities Act (ADA) guidelines. The accessibility grading system uses a five-point system ranging from one (none of the facilities/park area meet accessibility guidelines) to five (the entire park was developed/renovated using the principals of universal design). See Table 4 below for the grading system.

In 2016, the Township hired a planning consultant to complete an ADA and universal accessibility evaluation of their facilities and park areas and create an ADA Transition Plan. Within the Township, some parks have facilities that are not ADA accessible. However, the Township recognizes the importance of equal access for all park users and is dedicated to improving accessibility at each of its parks when improvements are made. Additionally, over the next five (5) years, the Township has decided to prioritize the items on the ADA Transition Plan because they believe making the Township facilities accessible is of the utmost importance. The ADA Transition Plan contains priority codes ranging from one (1) to four (4), with one (1) being the highest priority and four (4) being the lowest. A full list of transition plan priority items is listed on page XXX on the action plan. This includes parking, paths, restrooms, activity areas, amenities, and signage.

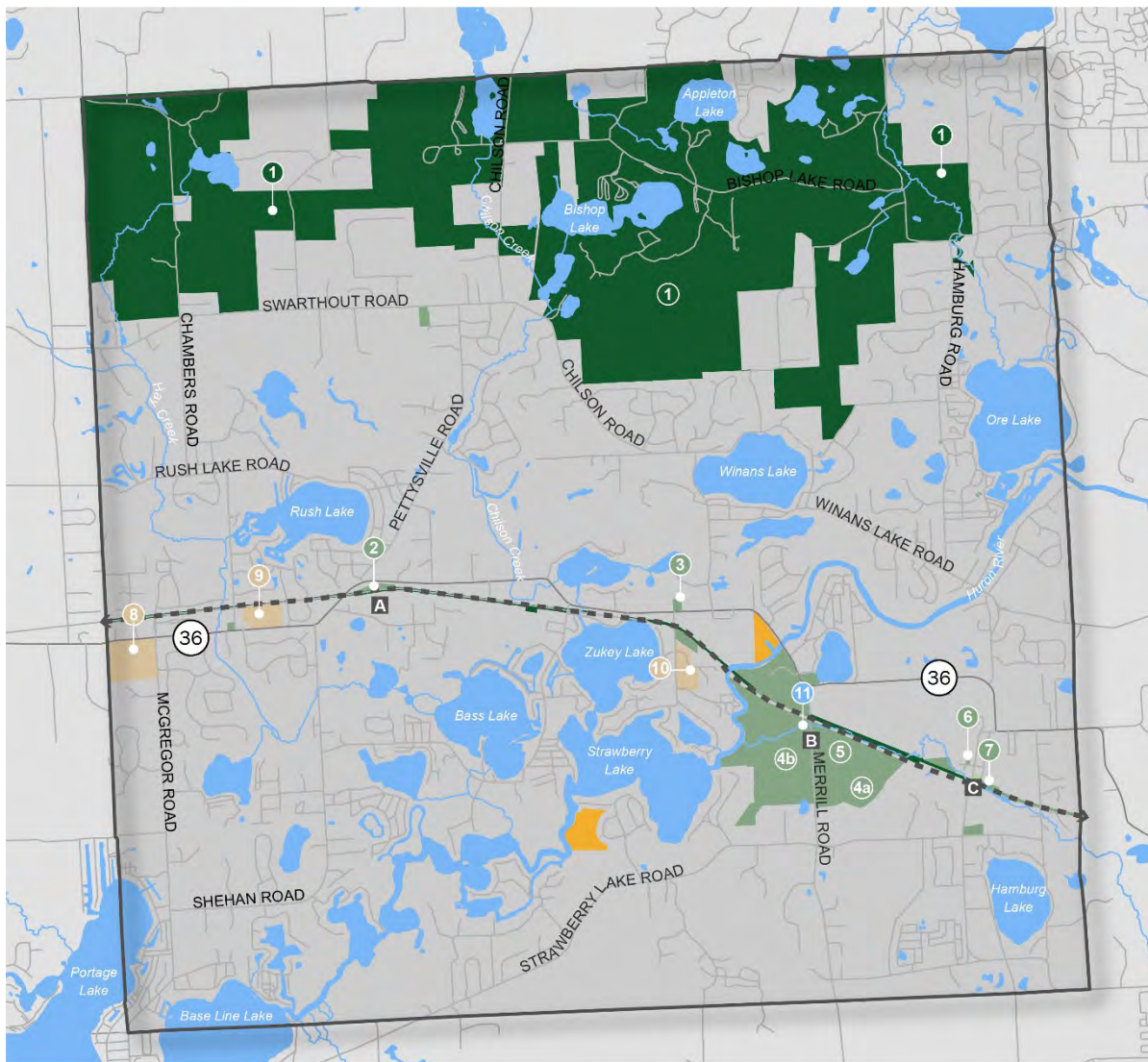
TABLE 5 - DNR ACCESSIBILITY GRADING SYSTEM FOR PARKS AND RECREATION FACILITIES

ACCESSIBILITY GRADE	DEFINITION
1	None of the facilities/park areas meet accessibility guidelines.
2	Some of the facilities/park areas meet accessibility guidelines.
3	Most of the facilities/park areas meet accessibility guidelines.
4	The entire park meets accessibility guidelines.
5	The entire park was developed/renovated using the principals of universal design.



### TOWNSHIP PARK FACILITIES

MAP 4 - HAMBURG TOWNSHIP PARKS



#### LEGEND

<span style="display:inline-block; width:15px; height:15px; background-color:darkgreen;"></span> STATE PARKS	<span style="display:inline-block; width:15px; height:15px; background-color:lightbrown;"></span> PUBLIC SCHOOL
<span style="display:inline-block; width:15px; height:15px; border:1px solid black; border-radius:50%; background-color:darkgreen;"></span> 1 Brighton State Recreation Area	<span style="display:inline-block; width:15px; height:15px; border:1px solid black; border-radius:50%; background-color:lightbrown;"></span> 8 Navigator/Pathfinder Middle School
<span style="display:inline-block; width:15px; height:15px; background-color:mediumseagreen;"></span> COMMUNITY FACILITIES	<span style="display:inline-block; width:15px; height:15px; border:1px solid black; border-radius:50%; background-color:lightbrown;"></span> 9 County Elementary School
<span style="display:inline-block; width:15px; height:15px; border:1px solid black; border-radius:50%; background-color:mediumseagreen;"></span> 2 Pump Track	<span style="display:inline-block; width:15px; height:15px; border:1px solid black; border-radius:50%; background-color:lightbrown;"></span> 10 Kensington Woods Schools
<span style="display:inline-block; width:15px; height:15px; border:1px solid black; border-radius:50%; background-color:mediumseagreen;"></span> 3 Livingston County Conservation Club	<span style="display:inline-block; width:15px; height:15px; background-color:orange;"></span> LIVINGSTON COUNTY LAND
<span style="display:inline-block; width:15px; height:15px; border:1px solid black; border-radius:50%; background-color:mediumseagreen;"></span> 4a Manly W. Bennett Memorial Park- East	<span style="display:inline-block; width:15px; height:15px; background-color:gray;"></span> TRAILHEAD
<span style="display:inline-block; width:15px; height:15px; border:1px solid black; border-radius:50%; background-color:mediumseagreen;"></span> 4b Manly W. Bennett Memorial Park - West	<span style="display:inline-block; width:15px; height:15px; border:1px solid black; border-radius:50%; background-color:gray;"></span> A Pettysville Trailhead
<span style="display:inline-block; width:15px; height:15px; border:1px solid black; border-radius:50%; background-color:mediumseagreen;"></span> 5 Hamburg Township Library / Hamburg Senior Community Center	<span style="display:inline-block; width:15px; height:15px; border:1px solid black; border-radius:50%; background-color:gray;"></span> B Merrill Trailhead
<span style="display:inline-block; width:15px; height:15px; border:1px solid black; border-radius:50%; background-color:mediumseagreen;"></span> 6 Hamburg Historical Society Museum	<span style="display:inline-block; width:15px; height:15px; border:1px solid black; border-radius:50%; background-color:gray;"></span> C Hamburg Village Trailhead
<span style="display:inline-block; width:15px; height:15px; border:1px solid black; border-radius:50%; background-color:mediumseagreen;"></span> 7 Winkelhaus Park	<span style="display:inline-block; width:15px; height:15px; background-color:lightblue;"></span> WATER BODIES
<span style="display:inline-block; width:15px; height:15px; background-color:darkgreen;"></span> Township Owned Property	<span style="display:inline-block; width:15px; height:15px; border:1px solid black; border-radius:50%; background-color:lightblue;"></span> 11 Huron River Water Trail Bennett Launch



## MANLY W. BENNETT MEMORIAL PARK – EAST

*Location: 10405 Merrill Rd.,  
Whitmore Lake, MI 48189*

*Acreage: 120.40*

*ADA Accessibility: 3*

*Classification: Regional*

Bennett Park East includes a playground, several baseball diamonds, a field and track for remote controlled vehicles and aircraft, football and rugby practice areas, a concession stand, picnic shelters, and a 5-acre community event field.



## MANLY W. BENNETT MEMORIAL PARK – WEST

*Location: 10405 Merrill Rd., Whitmore Lake, MI 48189*

*Acreage: 181.6*

*ADA Accessibility: 3*

*Classification: Regional*

On the other side of Merrill Road is Bennett Park West. This park is best known for its soccer fields, 18-hole disc golf course, an outdoor workout area, nature and paved trails, boardwalk to a scenic overlook over the Huron River, a playground, concessions building and pavilion, and access to the Huron River Water Trail and Mike Levine Lakelands Trail State Park.





MAP 5 - MANLY W. BENNETT MEMORIAL PARK - EAST





MAP 6 - MANLY W. BENNETT MEMORIAL PARK - WEST & MERRILL TRAILHEAD





## WINKELHAUS PARK

*Location: 10655 Hamburg Rd, Hamburg, MI 48139*

*Acreage: 0.90*

*ADA Accessibility: 1*

*Classification: Neighborhood*

In memory of the Winkelhaus family and the former Hamburg Hotel, this park includes open space for picnicking beneath the tree canopy, a nature trail through the woods, horseshoe pits, a gazebo for events, and interpretive signage reflecting on the history of the hotel.





### MAP 7 - WINKELHAUS PARK & HAMBURG VILLAGE TRAILHEAD





## PARK SERVICE AREA AND CLASSIFICATION

A recreation inventory is the foundation for developing an understanding of the Township's recreation needs, deficiencies, and future plans. An inventory provides a snapshot of all the available facilities within a community along with detail about the types of activities and features. The following classification system is adapted from the National Recreation and Parks Association (NRPA) guide. It recognizes types of parks based on size, service area, facilities, and use groups. Each park in Hamburg Township is classified as a neighborhood park, a community park, or a regional park. The NRPA classifies several other park types, but they are not all applicable to the Hamburg Township.

### NEIGHBORHOOD PARKS

Parks in this classification are the most basic park unit of a system and serve as the recreation and social focus of a neighborhood. Neighborhood parks are easily accessible to neighborhood populations and geographically centered within safe walking distance and bike access. Typically, neighborhood parks are 5 to 10 acres in size and can service a population of approximately 5,000 residents. The parks have a service location of  $\frac{1}{4}$  to  $\frac{1}{2}$  mile distance. National standards recommend between .25 to 2.0 acres of neighborhood parks per 1,000 residents. The national standard is about 5.3 acres. Hamburg Township provides .9 acres of neighborhood park space, which is short of the national standard about 4.4 acres. Neighborhood Parks are identified by the service area of Hamburg Township in the previous inventory section.

Winkelhaus Park is the only neighborhood park in the Township. However, it has been the policy of Hamburg Township over the past 30 years to require new residential developments to provide open space areas within each project to meet the passive and active recreation needs of neighborhoods. Further, some older residential developments already have open space set aside for these purposes. Therefore, there may be more neighborhood park space within the Township that is not Township-owned land.



## COMMUNITY PARKS

Community parks are intended to serve several neighborhoods and usually serve a broad range of uses. The typical park size is 30 acres or more. The Township has two parks that are classified as a community park. The national classification system recommends 5 acres per 1,000 residents. The national standard is about 106.3 acres. There are no community parks that Hamburg Township owns or operates. Compared to national standards, it appears that the Hamburg Township may be deficient in terms of community parks. However, schools can help provide parks facilities in the category of community parks. If schools are included in the community park category, there is a total of 71.36 acres of recreation/park land, reduces the deficiency to 35 acres, according to the national standards.

## REGIONAL PARKS

Regional parks are typically classified as serving several communities and being large in size, typically, 200 acres or more. They are land that is set aside for preservation, natural resources, environmental significance, use, or historic/cultural interest. While the national standard acreage is large, and Hampton Township's regional parks are smaller, the NRPA does not only categorize parks by size. A regional park can be smaller but still have a regional use or cultural significance. This is the case for the Manly W. Bennett Memorial Park (East and West). National Standards suggest 5 acres per 1,000 residents. The Township owns one regional park broken into two:

- Manly W. Bennett Memorial Park – East
- Manly W. Bennett Memorial Park – West

The Township has a total of 365 acres of regional park land, with an excess of 96.5 acres of land. In addition to its regional parks, the Township also has access to a regional trail system. 4.5-miles of the Mike Levine Lakelands Trail state park passes through the Township and connects to many local points of interest and to the larger cross-state Great Lake-to-Lake Trail.





TABLE 6 - HAMBURG TOWNSHIP PARK INVENTORY

	MANLY W. BENNETT MEMORIAL PARK - EAST	MANLY W. BENNETT MEMORIAL PARK - WEST	WINKELHAUS PARK
ACREAGE	183.42	181.6	0.9
ACCESSIBILITY	3	3	1
CLASSIFICATION	Regional Park	Regional Park	Neighborhood Park
ADULT FITNESS EQUIPMENT		X	
PICKLEBALL COURT	X		
BASEBALL DIAMOND	X		
BATTING CAGES	X		
FOOTBALL/ RUGBY FIELD	X		
DISC GOLF COURSE		X	
T-BALL FIELD	X		
SOCCER FIELDS		X	
HORSESHOES			X
VOLLEYBALL COURT	X		
RC FLYER FIELD	X		
PAVILION/ GAZEBO	X		X
PLAYGROUND	X	X	
HIKING/ WALKING TRAILS	X	X	X
KAYAK/ CANOE LAUNCH SITE		X	
SENIOR/ COMMUNITY CENTER	X		
RESTROOMS	X	X	
CONCESSIONS BOOTH	X	X	
VIEWING DECK		X	
PICNIC AREA			X
BOARDWALK		X	

There are several facilities that are owned by the Pickney Community School District which provide public access to parks and recreation functions. The school system contains outdoor facilities that are utilized by youth sport organizations and adjacent neighborhood residents, and indoor school facilities such as gyms, auditoriums, and pool which are used in local recreation programming.

### Navigator / Pathfinder Middle School

Navigator / Pathfinder contains several recreational facilities available to the public. Amenities include an indoor swimming pool, community theater, indoor running track, outdoor track, soccer field, weight room, performing arts room, basketball courts, a baseball field, two softball fields, and eight tennis courts. Residents can request use of these facilities from Pinckney Community Schools.

### Pinckney High School

Pickney High School (in Putnam Township) contains numerous recreational facilities and is classified as a community park. Recreational amenities include a swimming pool, weight room, performing arts room, indoor running track, outdoor running track, football stadium with a football playing field, two soccer practice fields, tennis courts, three basketball courts, two softball diamonds, and two baseball diamonds.



## COMPARISON TO STANDARDS

The Township has committed to taking a steady and consistent approach to developing park facilities that provide lifelong recreation options for the residents of Hamburg Township. When considering level of service, it is important to note that the Township provides de facto recreation services and facilities to a population greater than its residential population. Therefore, it is important to consider this broader need in terms of demand and not just classification standards for park land per 1,000 residents.

The National Recreation and Park Association (NRPA) has published typical recreation facility standards that specify facility service area, the number of facilities needed to service the population, and the land area needed. These standards can be used in conjunction with the acreage standards to further identify the Hamburg Township's recreation needs. Table 6 provides a comparison of the Township's public recreation facilities against the NRPA's published recreation facility standards.

In general, the Township rates very well compared to the MDNR's suggested facility development standards regarding the acreage of park land necessary for their population. The table only indicates excess parkland in Neighborhood Parks, Community Parks, and Regional Parks.

In addition to the standards outlined in the table below, more recent park guidelines indicate that officials must also consider the parks and recreation "Level of Service" desired by the residents of a community. If the Township's resident needs are met with the existing park land and facilities, then that amount is sufficient, regardless of the standards or acreage suggestions. Therefore, the community input portion of a recreation plan is so important. While it appears that the Township has enough recreation land, the community input results indicated some deficiencies in parks such as additional restrooms, updated playground equipment, greater access to trails, and access to dog parks. Residents are most concerned with improving the current facilities. The Parks and Recreation Committee needs to understand the wishes of the community it serves to provide the appropriate level of service.

TABLE 7 - COMPARISON TO STANDARDS

	STANDARD ACREAGE	TOWNSHIP PARK ACREAGE	STANDARD AMOUNT OF ACREAGE	DEFICIENCY / EXCESS
NEIGHBORHOOD PARKS	.25 to 2 acres / 1,000 Residents	0.9	5.3 to 42.5	-4.4
COMMUNITY PARKS*	5 acres / 1,000 Residents	71.4	106.3	-34.9
REGIONAL PARKS	5 acres / 1,000 Residents	365	106.3	+195.7
TOTAL		437.3	217.9	156.4
Table is based on the 2020 Census Population				
*Community Park calculations include school properties				

Regional recreation facilities such as local, County, and State parks provide additional opportunities to Hamburg Township residents. These additional facilities provide residents with a variety of activities and opportunities that include larger acres of land, lakes, camping, recreation centers, and other recreational activities. A brief inventory of these facilities is below.

### LOCAL PARKS

#### *Hamburg Township Facilities*

- **Senior / Community Center:** The senior center provides a wide range of programs for all Township residents 55 and older. The programs offer something for everyone whether that's educational, fitness, socialization, or a trip.
- **Hamburg Historical Museum:** Established in 2004 and located on Stone Street, the goal of the museum is to preserve the history of Hamburg and enrich the community. The museum is located in one of Hamburg's major historic buildings, which was constructed in the mid-1850's and served as a Methodist Church. It was subsequently converted into the Township Offices in the mid-1900's and later into a Township Library before housing the museum. The tearoom within the facility is available to the public as an event space, by appointment.
- **Hamburg Township Library:** Located off Merrill Road, the library contains various meeting rooms, computers, and other equipment for public use. The library's collection contains audio books, newspapers, DVD's, books, music CD's, sheet music available for checkout with a library card.

#### *Other Local Recreation Areas*

- Brighton Mill Pond (Brighton)
- Selcra Meijer Skate Park (Brighton)
- Baldwin Park (Howell)
- Genoa Township Fields (Genoa Township)
- Howell City Park (Howell)
- Howell Area Aquatic Center (Howell)
- Howell Recreation Center (Howell)
- Lakeside Drive Park (Howell)
- Marion Disc Golf Course (Marion Township)
- Oceola Township Soccer Fields (Oceola Township)
- Page Field (Howell)
- Paul Bennett Field (Howell)
- Putnam Township Square (Pinckney)
- MDNR Portage Lake Boat Launch





Lutz County Park is the only park within the Livingston County parks system. It is approximately 300 acres containing over 7,000 linear feet of groomed trails, numerous natural features, picnic tables and park benches. Nearby Genesee, Oakland and Washtenaw County Park systems also provide a plethora of natural resources, including playgrounds, trails, swimming, and sport facilities. The following list represents adjacent county park facilities within a 30-mile radius of Hamburg Township:

- Cavanaugh Lake County Park (Sylvan Township, Washtenaw County)
- Clear Lake County Park (Waterloo Township, Jackson County)
- County Farm Park (Pittsfield Township, Washtenaw County)
- Gillett's Lake County Park (Leoni Township, Jackson County)
- Grass Lake County Park (Grass Lake Township, Jackson County)
- Groveland Oaks County Park (Groveland Township, Oakland County)
- Independence Lake County Park (Webster Township, Washtenaw County)
- Linden County Park (Linden Township, Genesee County)
- Little Wolf County Lake (Napoleon Township, Jackson County)
- Lyon Oaks County Park (City of Wixom, Oakland County)
- Parker Miller County Park (Ann Arbor Township, Washtenaw County)
- Park Lyndon (Lyndon Township, Washtenaw County)
- Park Northfield (Northfield Township, Washtenaw County)
- Pleasant Lake County Park (Henrietta Township, Jackson County)
- Portage Lake County Park (Waterloo Township, Jackson County)
- Rolling Hills County Park (Ypsilanti Township, Washtenaw County)
- Rose Oaks County Park (Rose Township, Oakland County)
- Sharon Mills County Park (Sharon Township, Washtenaw County)
- Springfield Oaks (Springfield Township, Oakland County)
- Waterford Oaks (Waterford Township, Oakland County)

## STATE PARKS & RECREATION AREAS

### *Brighton State Recreation Area*

The Brighton Recreation Area is located in Hamburg Township and provides various recreational opportunities for Township residents. The 4,057-acre park offers swimming, picnicking, hiking, camping, boating, and fishing, equestrian activities and trails, as well as playground equipment.

DRAFT

MAP 8 - REGIONAL FACILITIES

Coming soon

Communities across the United States are creating regional trail systems in both cities and rural areas to provide a higher quality of life for residents. Trails give residents the opportunity to be more active and healthier, safer while walking or biking on the roads, have additional ways to experience their community, and give all users the option of increased mobility in different modes of travel.

### WHY TRAILS ARE IMPORTANT

While trails can be a challenge to implement, their positive effects on a community cannot be disputed. It has been proven that trails create a place of pride and sense of ownership in Michigan residents. Trails are also an important driver in the local and regional economy, they increase property values, and provide safe and healthy recreation options. The growing trail trend in Michigan is also reflected in the Township. Trails and pathways are an asset to every community. Trail users have a measurable impact on the local economy. Working with the surrounding townships and other jurisdictions is an effective way to connect with existing systems and expand the non-motorized pathway infrastructure. Several statewide trail systems are being developed which provide an opportunity for the Township to connect with its neighbors. The Great Lake-to-Lake Trail system stretches from South Haven on Lake Michigan to Port Huron on Lake Huron. Similarly, the Iron Belle Trail is a set of two trails which span the length of the State from Ironwood in the Upper Peninsula to Belle Isle in the Lower Peninsula. The Township should seek to connect to larger regional and state trail systems whenever possible as these projects create a long-term, valuable investment in the community. Trail investment promotes economic vitality, encourages a healthier lifestyle in residents, and creates a safer travel environment.

### COMPLETE STREETS

Hamburg Township has implemented a Complete Streets policy. For the Township, implementing a Complete Streets approach integrates people and place in the planning, design, construction, operation, and maintenance of the local transportation network. Additionally, this policy helps ensure streets are safe for people of all ages and abilities, balance the needs of different modes, and support local land uses, economies, and natural features.

### HURON RIVER WATER TRAIL

The Huron River Water Trail is an inland paddling trail along the Huron River which traverses through Hamburg Township. The trail & river begin east of Milford and moves through 30 different communities before emptying out into Lake Erie. The route is intended for kayaking, canoeing, fishing, and other similar water activities. The trail connects to several Hamburg Township lakes including Ore, Strawberry, Gallagher, Whitewood, Base Line, etc. The Township is interested in partnerships and fostering this type of non-traditional recreation to provide greater opportunities in the community.

## MIKE LEVINE LAKELANDS TRAIL LINEAR STATE PARK

*Location: The trail traverses through Jackson, Ingham, and Livingston Counties. Entering Livingston County, the trail starts on the western boundary of Gregory Township and follows closely along M-36 to the eastern boundary of Hamburg Township. Within Hamburg Township there are three trailheads. Pettysville Trailhead is located on the south side of the intersection of Pettysville Road and M-36, Merrill Trailhead is in West Bennett Park in the parking lot adjacent to Merrill Road, and Hamburg Village Trailhead is adjacent to the south of Winkelhaus Park.*

*Acreage: 33 miles extending between Hamburg Township and Blackman Township.*

*ADA Accessibility: 1*

*Classification: Linear State Park*

The Mike Levine Lakelands Trail runs 34 miles between Blackman Township in Jackson County and Hamburg Township in Livingston County. Opened to the public in 1994 as the Lakelands Trail State Park, it is a popular destination for people looking to enjoy the outdoors. Local philanthropist, Mike Levine, contributed extensive resources to transform the former railway corridor into an improved trail. In 2018, the DNR changed the trail's name to the Mike Levine Lakelands Trail State Park in recognition of Mr. Levine's efforts.



The trail consists of eight (8) miles of paved asphalt surface while the remaining 25 miles are surfaced with crushed limestone, making it an accessible travel route. As a multiple-use trail, it is frequented by bikers, joggers, horseback riders, hikers, cross-country skiers, and rollerbladers. The trail traverses through pastures, natural hardwoods, picturesque wetlands, across streams and the popular Huron River.

Within Hamburg Township there are three trailheads: Pettysville Trailhead, Merrill Trailhead, and Hamburg Village Trailhead. Pettysville Trailhead features ADA and standard parking, a bike rack, pump track, portable toilet, and informational kiosk. Merrill Trailhead includes ADA and standard parking, a portable toilet, and informational kiosk. Finally, Hamburg Village Trailhead has ADA and standard parking, an informational kiosk, and a bench.

The trail is a key component of the Great Lake to Lake Trails Route #1, which extends 275 miles from South Haven to Port Huron. It is an important link in proposed statewide trail systems that represent ongoing collaboration between communities, counties, and organizations.







## PRIVATE PARKS AND FACILITIES

There are a number of privately owned recreation facilities located either within Hamburg Township or a short travel distance from the Township. Although these facilities are privately operated and may charge a user fee or require membership, they are considered in the plan analysis because they meet specific community needs. Private facilities include:

- Legacy Center: A sports complex that includes a wealth of services like wellness and fitness classes, organized adult and youth recreation, and travel and elite sports leagues, including soccer, baseball, softball, football, and volleyball.
- Bowling Alleys: Brighton Bowl, Howell Bowl-E-Drome, Chelsea Lanes, and Whitmore Lanes.
- Camps and Gymnastic and Fitness Clubs: Camp's include Birkett, Talahi, Crooked Creek Farm, DiBrova, Hamburg Fitness Center and Camp, and Varsity Day.
- Ice Skating: Ann Arbor Ice Cube, Arctic Coliseum, 140 Ice Den, Kensington Valley Ice House, Veterans Memorial Park Pool and Ice Rink, Yost Ice Arena.
- Golf Courses (Private/Members Only): Chemung Hills Country Club, Lakelands Golf and Country Club, Oak Pointe Country Club.
- Golf Courses (Open to the Public): Hawk Meadows Golf Course, Faulkwood Shores Golf Club, Huron Meadows Metropark Golf Course, Ironwood Golf Club, Kensington Metropark Golf Course, Majestic at Lake Walden, Moose Ridge Golf Course, Rush Lake Golf Course, Timber Trace Golf Club, Whispering Pines Golf Course.
- Miscellaneous Facilities: Brighton Riding Stable, Golf-o-Rama, Emrich Retreat Center, Howell Nature Center, Livingston County Wildlife and Conservation Club (Archery, Hunting, Gun Safety, Trap Shooting, Hunting and Boater Safety Classes, etc.), Mt. Brighton Ski Area, Rollerama II, Michigan Academy of Dance and Music, Whitmore Lake Rod and Gun Club, Portage Yacht Club Marina, UofM Sailing Club and the Hamburg disc golf course (publicly owned).



DRAFT

# 05

COMMUNITY INPUT

IN THIS CHAPTER

44 - COMMUNITY INPUT

#### OVERVIEW

One of the most important aspects of a community's Parks and Recreation Master Plan is the inclusion of the park user's opinions about how they view the future of their parks and recreation system. Such feedback is used to direct Township leadership on issues important to their constituency and prioritize future capital improvement projects. Given its impact, gathering meaningful public input was a focused strategy of the recreation planning process. The input received in the development stage of this plan guides the parks and recreation goals, objectives, and action items outlined in Chapter 6 of this document. To comply with the Michigan Department of Natural Resources Guidelines for Development of Community Parks and Recreation Plans, Hamburg Township offered several public input opportunities including an online community input survey, a public open house input survey, a 30-day review period, and a public hearing.

A compilation of all the input received is located in Appendix B. A Summary of the various methods of input and feedback received is described in the following pages. The Plan was available for public comment during the required 30-day public review period held between **DATE** and **DATE**. The Parks and Recreation Committee held a public hearing and recommended adoption of the Plan to the Township Board on **DATE**. The Township Board adopted the Plan on **DATE**.

#### SURVEY RESULTS

The Hamburg Township Parks and Recreation Master Plan community-wide survey was available online from July 2022 to August 2022, under the web address [www.hamburgmirecreationsurvey.com](http://www.hamburgmirecreationsurvey.com). The community-wide survey received 621 responses. It was publicized with a variety of methods:

- Link on the Township website.
- Various Facebook posts on the Hamburg Township page and shared on numerous pages including the Hamburg Township Parks and Recreation page.
- Email blasts to Township staff, Township Board, various boards/commissions, and volunteer list.
- A press release in the local newspaper.
- Postcards with a QR code and the survey website address were placed at Township Offices, the Senior Center, Library, and local businesses.

Key points of the survey are summarized on the following pages, and the remaining tables developed for the report can be found in Appendix B.

#### Community Input Quotables. What Hamburg stakeholders are saying:

*"I like the variety of activities available, and the fact that Hamburg Township seems to actually maintain their parks and section of the Lakelands Trail."*

*"Add a couple splash pads and more dog parks."*

*"Absolutely love the parks. Given the size of our community, it's amazing to see everything the township has to offer. "*

*"Make the community more aware of the variety of facilities available here."*

*"The senior center is a wonderful facility. I love what they do for the seniors there. Julie is a great manager."*

*"More neighborhood trail access to Lakeland trail"*

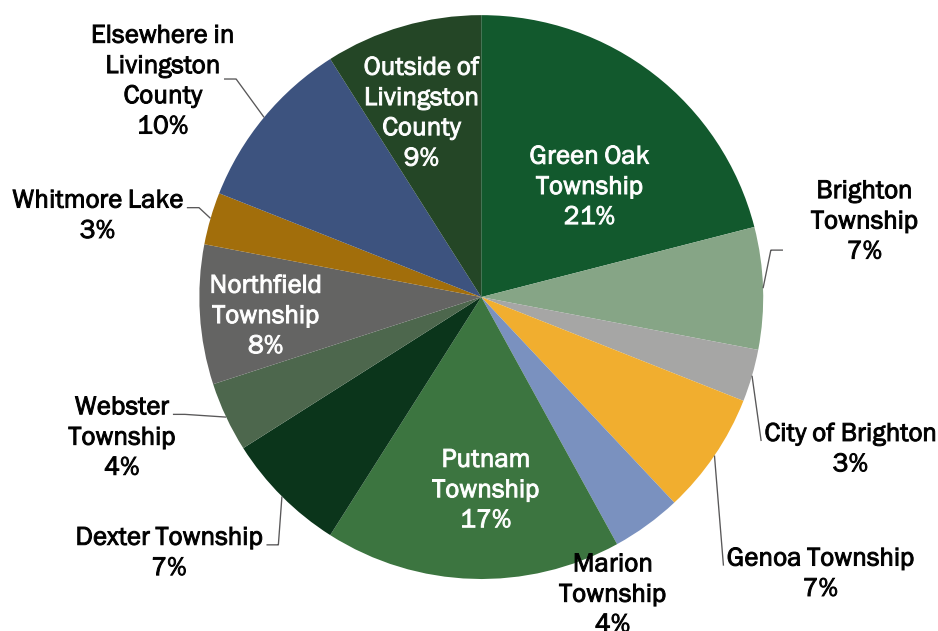
*"I am looking forward to the Levine Rail trail being connected to the island Lake trail system."*



## About the Respondents

There was a total of 621 respondents who participated in the survey. Respondents were not required to answer every question. Therefore, not all the questions have a total of 621 answers. To have a general understanding of who was taking the survey, the first questions were demographic questions about the respondents themselves. Respondents were asked to provide their relationship to the Township and their age. An overwhelming majority, 84 percent, of the respondents either live, own a business or own property in the Township and 16 percent did not. It is valuable to know where Township Park stakeholders live. Figure 2 depicts where those stakeholders who are not a resident and/or business or property owner in the Township live.

Figure 2 – Relationship to Hamburg Township



To understand more about the respondents, the survey asked respondents to select which age cohort they are a part of. The top respondent age cohorts were 60 to 69, at 29 percent, followed by 50 to 59 at 21.9 percent.

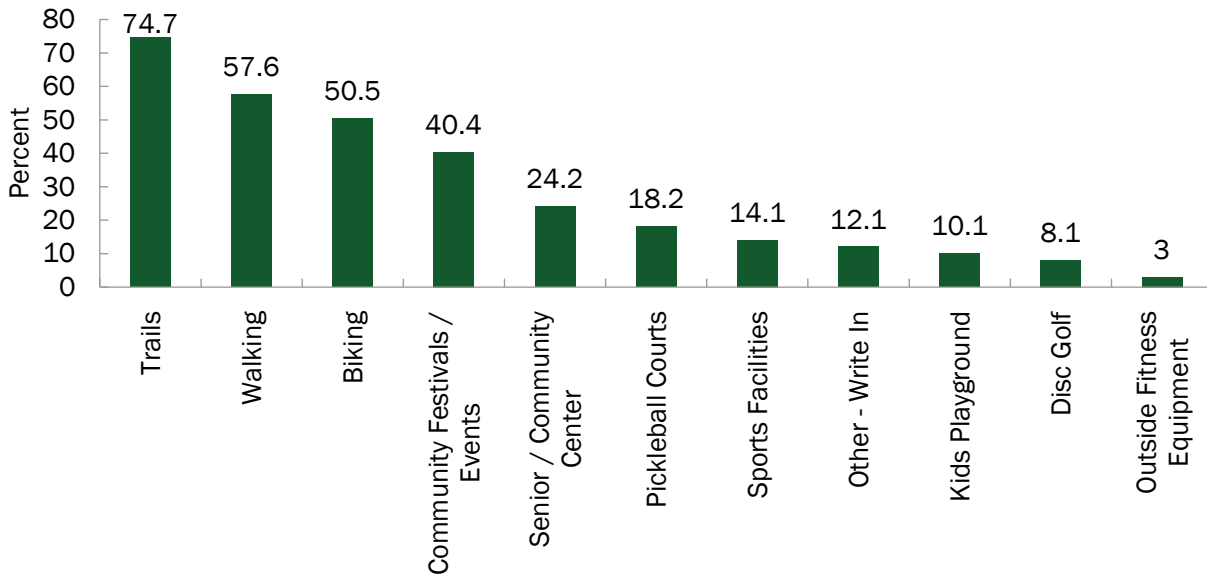
Table 8 – Age of Respondents

Age Group	Respondents
18 and under	0.2%
18-29	3.6%
30-39	12.9%
40-49	15.8%
50-59	21.9%
60-69	29.4%
70-79	13.9%
80 and older	2.3%

### Park Activity

Respondents were asked how they used parks and open spaces in the Township. Eleven (11) options were presented, including an opportunity for “other-write in”. Respondents were encouraged to check all responses that applied to them. The use of trails, walking and biking came in as the top three (3) responses. A breakdown of the feedback received is provided in Figure 3, below.

Figure 3 – Park Activities



Next, respondents were asked how frequently they visited or used Township parks and facilities. The list included individual parks, amenities located within Manly Bennett Park as well as individual facilities, such as the Senior Center and Historical Museum. The Mike Levine Lakelands Trail State Park received the most daily and frequent usage. This data aligns with the Township's 2018 Plan and affirms that a significant portion of the population regularly utilize the trail system in the park. A summary of results are presented in Table 9 below, a full list of results can be found in Appendix B.

Table 9 – Park and Facility Usage

	Daily	Frequently (a couple of times per week)	Infrequently (a couple of times per month)	Rarely (a couple of times per year)	Never	Responses
<b>Baseball Diamonds</b> Count Percent	15 2.6%	107 18.7%	88 15.4%	78 13.7%	283 49.6%	571
<b>Boardwalk</b> Count Percent	17 3.0%	146 25.3%	191 33.2%	148 25.7%	74 12.8%	576
<b>Mike Levine Lakelands Trail State Park</b> Count Percent	75 12.9%	222 38.1%	152 26.1%	64 11.0%	69 11.9%	582
<b>Playground - Baseball side</b> Count Percent	4 0.7%	38 6.7%	59 10.4%	82 14.4%	387 67.9%	570
<b>Trailhead Parking</b> Count Percent	26 4.5%	162 28.2%	161 28.0%	106 18.4%	120 20.9%	575

Respondents were then asked whether they, or a member of their household, played an organized sport. The question encouraged respondents to check all responses that applied to them. The top response was Pickleball (29.2%), and a number of write in responses were received. The top write in responses were: Tennis (6), Biking (5), Equestrian (4), None (5), and a tie between Disc Golf (3) and Mountain Biking (3). The remaining responses are summarized in Figure 4 below and a full list of write in responses can be found in Appendix B.

### Thoughts on Parks

The next five (5) questions in the survey sought opinions from respondents ranging from current conditions of the Township's parks to their vision for the future. Similar to the Township's 2018 Plan, a majority of respondents (62.9%) were satisfied with current park maintenance and appearance, as presented in Table 10 below:

Table 10 – Current Park Opinion

	Satisfied	Somewhat Satisfied	Neutral	Unsatisfied	No Opinion/ Do Not Use	Responses
<b>Park Maintenance/Appearance</b> Count Percent	379 62.9%	122 20.2%	63 10.4%	11 1.8%	28 4.6%	603
<b>Variety of Amenities/Facilities</b> Count Percent	279 46.5%	162 27.0%	102 17.0%	22 3.7%	35 5.8%	600
<b>Safety and Security</b> Count Percent	351 58.7%	121 20.2%	87 14.5%	13 2.2%	26 4.3%	598

Diverging from the Township's 2018 Survey, which noted 74% of respondents would support the acquisition of more parkland within the Township. Respondents noted that their number 1 priority would be to maintain existing parks and facilities, with the number 2 priority being to add facilities/amenities to the existing parks, and the lowest priority being to acquire more park space. This feedback is presented in Figure 4, below:

Figure 4 – Organized Sports Participation

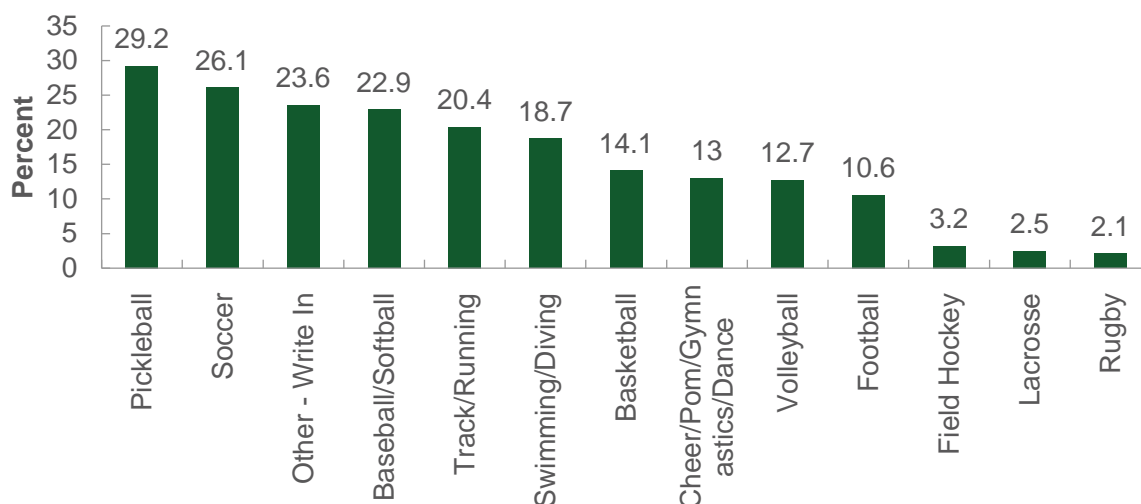


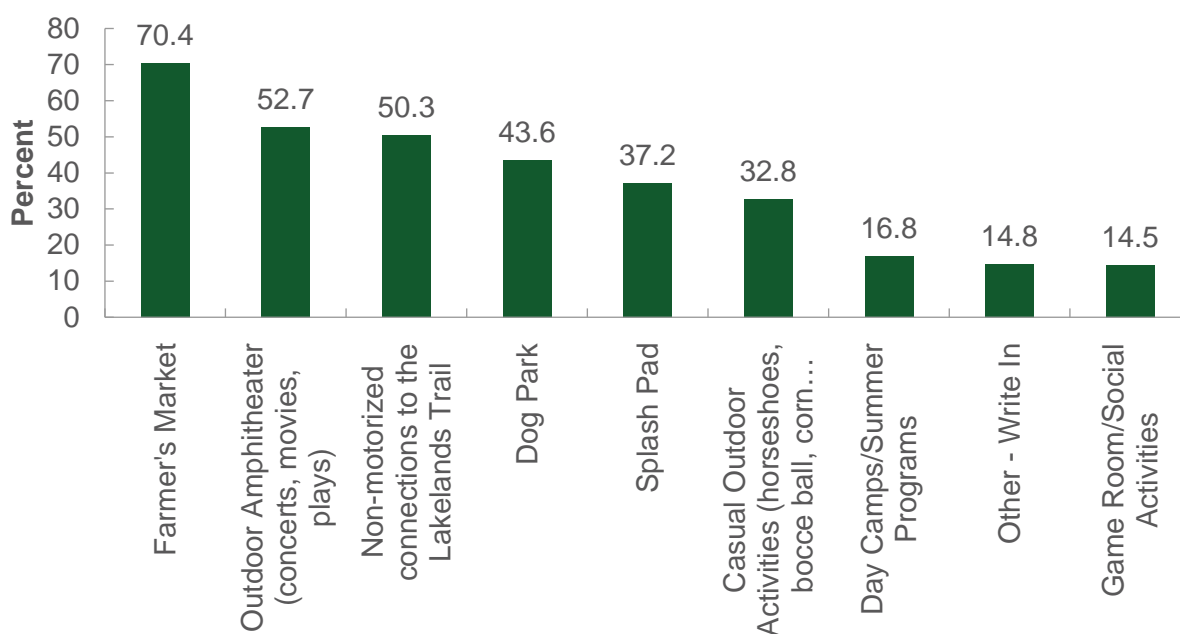


Table 11 – Future Park Priorities

Item	Overall Rank	Ranking	Score	Total Respondents
<b>Maintain parks and facilities we have</b>	1		1,233	516
<b>Add facilities/amenities to the existing parks</b>	2		1,111	493
<b>Acquire more park space</b>	3		728	459

Respondents were next asked what new activities/amenities they would like to see added to the parks in Hamburg Township. Of the respondents, 70.4% would like to see a farmers' market. The remaining responses are presented below:

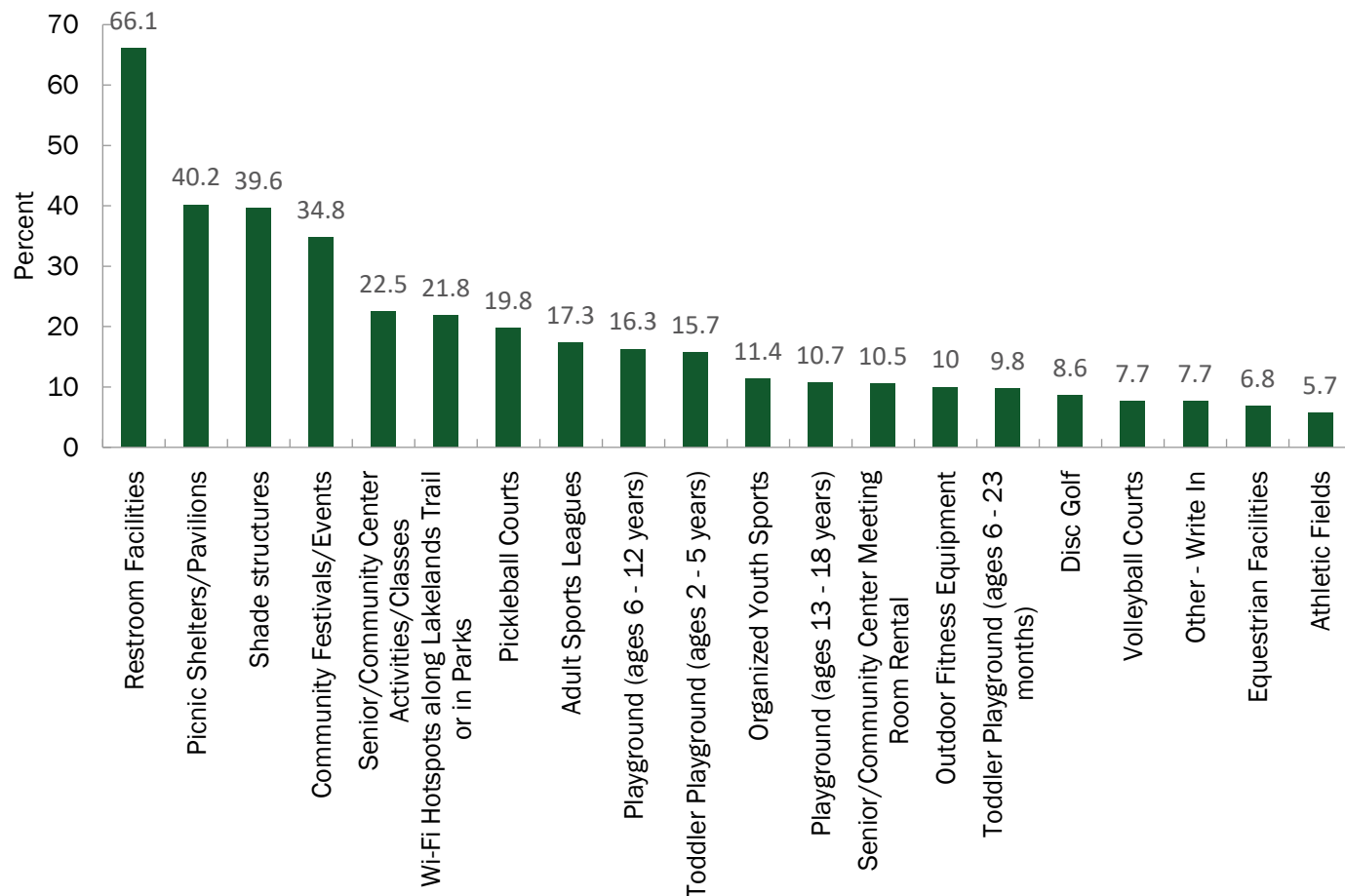
Figure 5 – New Amenities Requested



The top three (3) write-in responses were: Pickleball, Pool, and RC Car Track. a full list of results can be found in Appendix B.

Next, respondents were asked what existing activities/ amenities they would like to see added to the parks in Hamburg Township. Of the respondents, 66.1% would like to see additional restroom facilities. The remaining responses are presented below:

Figure 6 – Existing Amenities Requested

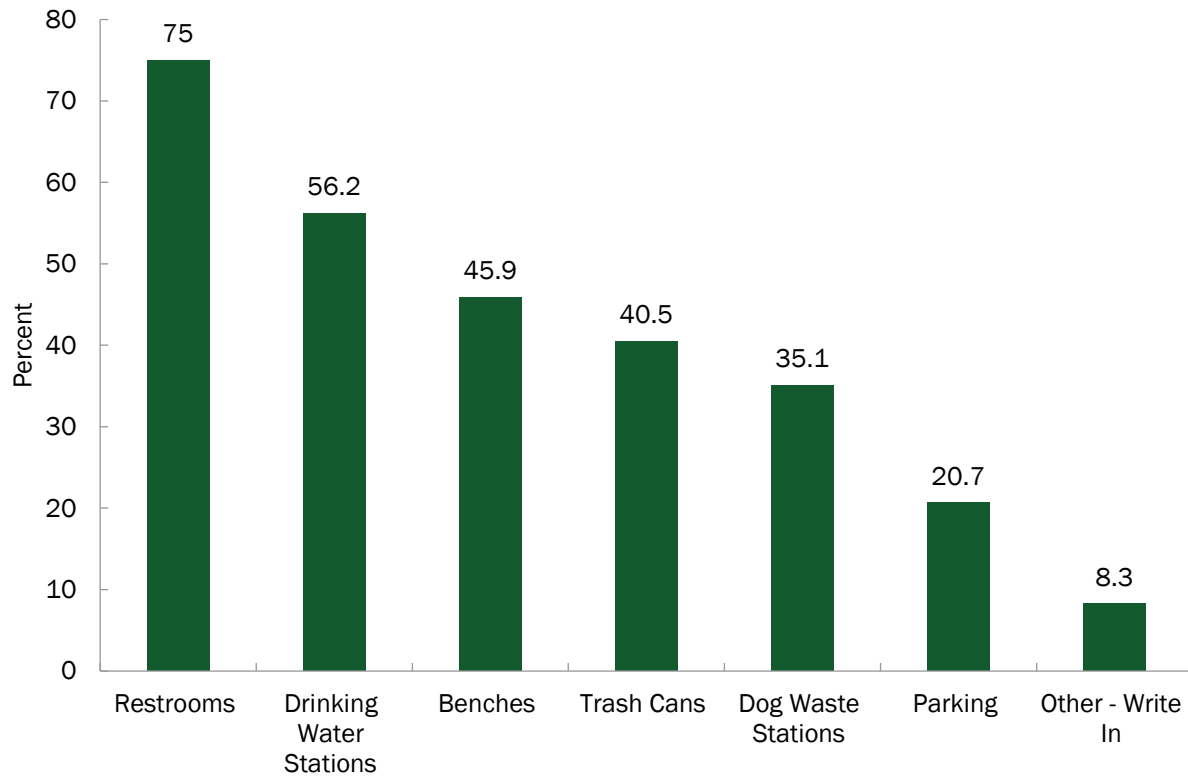


### Trails and Pathways

The Mike L. Levine Lakelands Trail State Park is a popular attraction for both residents of Hamburg Township, as well as those in neighboring communities. Similar to the Township's 2018 Survey, which noted 82% of respondents lived near or had access to the Lakelands Trail, the 2022 Survey 75% noted that they lived near or had access to the Lakelands Trail. In the 2022 survey, 11% did not know of and 14% stated that they did not live near or have access to the Lakelands Trail. Next, respondents were asked if their use of the Lakelands Trail would increase if they were able to access it from a trail link in their neighborhood. Sixty three percent of respondents said yes, while 37% of respondents stated no or that they didn't know/was not applicable.

The next question asked what improvements respondents would like to see at trailheads along the Mike L. Levine Lakelands Trail State Park. Respondents were encouraged to check all responses that applied to them. Additional restrooms and drinking water stations were the top requests. The top write in response were bike repair stations with six (6) write ins. The remaining responses are below.

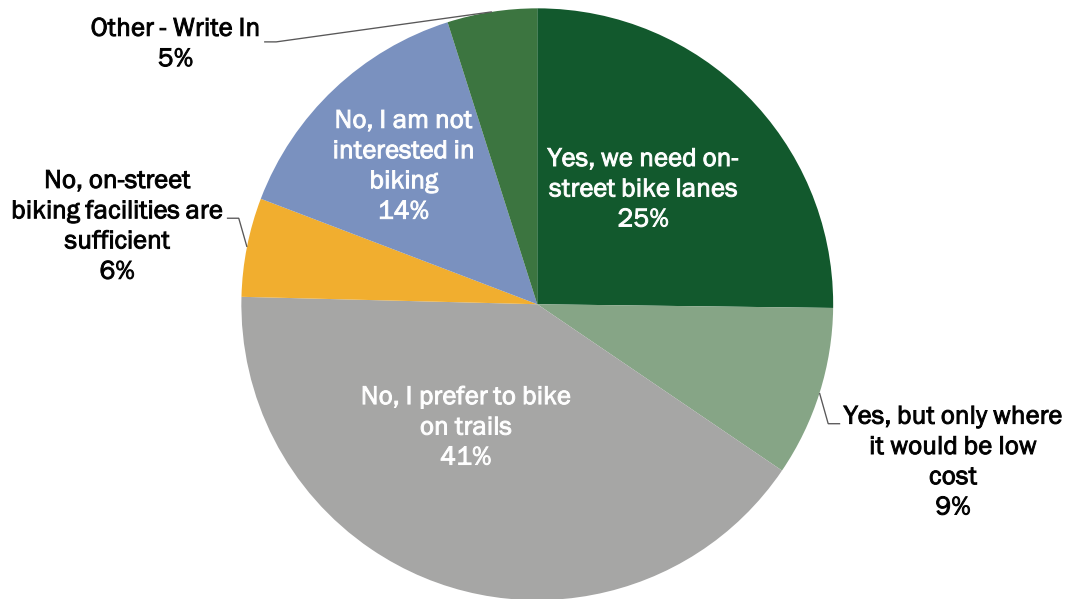
Figure 7 – Requested Improvements to the Mike Levine Lakelands Trail State Park



The Township has recently adopted a complete streets policy, which encourages the implementation of non-motorized transportation routes in the community. In this vein, respondents were asked if the Township should plan for on street biking facilities. Results were mixed with 41% of respondents reporting “no, I prefer to bike on trails” and 34% of respondents reporting “yes, we need on street bike lanes” or “yes, but only where it would be low cost.” The remaining responses are below.



Figure 8 – On Street Biking Facilities



There was one open ended question relating to trails posed to the community. Respondents were asked the following: Along the Mike Levine Lakelands Trail State Park and throughout the Township Parks, there are benches, trash cans, and dog waste stations. However, if you feel there is an area where these facilities are missing, where is that? The results were generally mixed; however, the top responses were:

- Additional benches
- Additional Drinking water
- Dog waste stations
- Restroom by Merrill Road
- Pettysville Road to Pickney
- Restroom near Kroger





### Accessibility

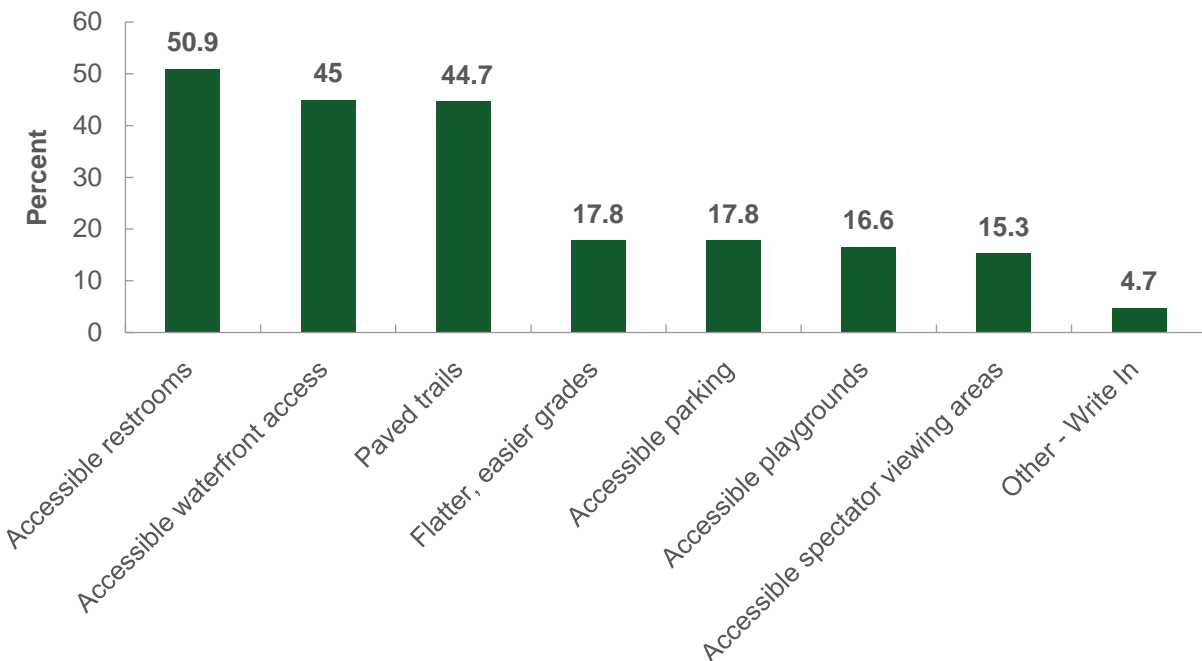
Understanding the makeup of the park users is a valuable tool for future park planning and ensuring that parks facilities are accessible to all residents, regardless of their background or ability. This is a priority that is continually addressed by Hamburg Township. Respondents were asked whether they, or anyone in their household has a disability, 13% of respondents stated yes while the remaining 87% said no.

Of the 13% of respondents who answered yes, an open-ended question was posed asking what accessible amenities they, or the member of their household, would like to see in Hamburg Township Parks. The top responses were:

- Restrooms
- Access to playgrounds
- Access to trails
- Paths that are wheelchair and walker accessible

Then respondents were asked which accessible improvements should be undertaken. Fifty-point nine percent of respondents selected accessible restrooms. The remaining responses are below.

Figure 9 – Accessible Improvements



### Funding and Outreach

The final section of the survey posed questions specifically to Township residents and/or business or property owners. Respondents were first asked if they would support a mileage to expand or provide new park and recreation facilities/programming. Fifty nine percent of respondents answered yes while 41% stated no or that they didn't know/had no opinion.

Respondents were then asked what was the best way to receive updates/ information about Township parks? Most respondents (67.5%) stated social media was their preference. The most common write-in answer was email (6). The results are provided below.

Figure 10 – Outreach Methods



Of those who selected social media as their preferred method of communication, an additional question was posed asking which social media platform the Township should use. An overwhelming majority (98.2%) of respondents selected Facebook, while 24% of respondents selected Instagram, 9% selected Twitter, and 3.3% selected TikTok.

The last two questions posed to respondents were open ended, asking what they liked best about Hamburg Township parks and what was one thing that Hamburg Parks could improve. Many responses were provided for each question, the following summary represents the most common answers:

#### The Best thing about Hamburg Township Parks:

- Trails
- Good maintenance
- Safe
- Beautiful
- Variety of amenities
- Clean

#### One thing you would do to improve Hamburg Township Parks:

- Install a splash pad
- More restroom facilities
- Have a farmers' market
- More/ safer trail access
- Updated play equipment
- Install a dog park

# DRAFT

## GOALS & OBJECTIVES

### IN THIS CHAPTER

56 - GOALS AND OBJECTIVES

62 - ACTION PLAN



## GOALS AND OBJECTIVES

Developing effective and achievable goals and objectives is an important part of the parks and recreation planning process. Overall, the Commission would like to provide high quality recreation opportunities for the community. More specific goals and objectives are based on the demographic characteristics of the population, the physical and environmental characteristics in Hamburg Township, and the input from the community.

Goals are the broadest level of ideas. By necessity, they are overarching and general. Objectives carry out the purpose of each goal. Finally, the Action Plan items are the most specific level. They identify specific projects and programs to be pursued over the next five years. Action Plan items can include organizational, staffing, programming, public information, and operation and maintenance actions. The Hamburg Township Parks and Recreation Committee formulated the following goals and objectives.

### GOAL #1: SAFETY AND SECURITY

---

#### IMPROVE SECURITY & ALLEVIATE ANY CURRENT SAFETY CONCERNS AT PARK FACILITIES

*Objectives:*

- Update faulty or inadequate equipment on an ongoing basis in cooperation with the parkland user groups.
- Install security/safety lighting at RC Field and investigate the use of surveillance equipment in areas of parkland and Lakelands Trail where appropriate.
- Install new lighting for sports fields at Manly W. Bennett Memorial Park including an additional baseball field.
- Build a cyclone fence around West Bennett Park's soccer field #4 and between #6 & #7 to catch errant balls due to major topographical changes.
- Install safety and field barriers around the north end of the RC Field facility consisting of plantings and signage, 6-ft to 8-ft tall at the bleachers.
- Install lighting at sledding hill and the RC Field.

### GOAL #2: IMPROVE EXISTING FACILITIES

---

#### IMPROVE AND MAINTAIN EXISTING FACILITIES ON A REGULAR AND CONTINUING BASIS

*Objectives:*

- Install benches and respite areas along Lakelands Trail and upgrade existing benches to include companion seating to conform to ADA standards.
- Screen existing portable restrooms or replace with composting toilets and develop a plan to upgrade restroom facilities in both Manly W Bennett Memorial Park east and west.
- Upgrade the electrical capacity at the concession stands.
- Install picnic facilities to support passive recreational activities.
- Upgrade nature trails in West Bennett Park to asphalt or crushed limestone to conform to Universal Access standards.

- Install wayfinding signage at the entrance to West Bennett Park, East Bennett Park, Trailheads, and municipal complex.
- Adhere to high standards of maintenance for all parks and recreation facilities.
- Develop and improve the trailheads with restrooms, paved parking, and picnic areas, etc.
- Upgrade existing sprinkler system in the park.
- Install a new pavilion at the Hamburg Village Trailhead near Winkelhaus Park and extend trailhead parking into grass area.
- Investigate future park facility options at the existing pump track at Pettysville Trailhead.
- Evaluate portable toilet utilization and determine if additional restroom facilities are needed or if other restroom options such as vault toilets or full restroom buildings would be more appropriate.
- Ensure that any park land remains open to public recreation use only.

### GOAL #3: MAXIMIZE THE DESIGN AND USE OF FACILITIES

---

#### FULLY DEVELOP AND UTILIZE PARKS AND RECREATION FACILITIES BASED ON THE MULTIPLE-USE CONCEPT, WHEREBY A VARIETY OF ACTIVE AND PASSIVE OPPORTUNITIES ARE PROVIDED IN EACH PARK

##### *Objectives:*

- Develop centrally located calendar of events/information signage, and website.
- Include a broad range of facilities within each park where feasible.
- Develop park sites to their optimal use in consideration of changing community needs and resource limitations.
- Maintain a logical balance between active and passive recreational pursuits in the parks.
- Develop a marketing strategy for facilities as well as programming for Parks and Recreation and Township recreation functions.
- Acquire scheduling software for parks facilities and community center and provide training for personnel scheduling park use.
- Convert underutilized areas of the park to support a greater variety of uses and review not less than an annual basis to maximize the efficiency of the turf facilities.



## GOAL #4: EXPAND RECREATION OPPORTUNITIES

---

### CONTINUE TO PROVIDE THE NECESSARY RECREATION SERVICES TO ACCOMMODATE THE EXPANDING POPULATION OF HAMBURG TOWNSHIP

#### *Objectives:*

- Develop one additional sand volleyball court at East Bennett Park and update existing field to better cater to leagues and events.
- Construct storage facilities to accommodate Football, Soccer, Baseball, and RC Field.
- Reconfigure the T-ball fields in East Bennett Park to maximize the efficiency of the facilities and to allow for parking to be developed. Consider a cloverleaf shape.
- Consider the addition of a splash pad.
- Explore the potential to physically connect the existing library and community center buildings with an addition.
- Pursue the development of a natural amphitheater on Township parklands to support concerts, movies, and plays.
- Relocate baseball field to practice field #3 to open up space south of library.
- Foster a multi-generational Community Center.
- Create a multi-use recreational sports facility that can accommodate adults and youth.
- Work with library to provide an outdoor space for patrons.
- Add a pavilion in football/sand volleyball area.
- Monitor the need of possible expansion and future facilities at the sledding hill and pickleball courts.

## GOAL #5: PRESERVATION OF NATURAL AND CULTURAL RESOURCES

---

### PROTECT NATURAL AND CULTURAL FEATURES, SUCH AS WOODED AREAS, WETLANDS, WILDLIFE HABITAT, NATURAL DRAINAGE WAYS, AND HISTORIC STRUCTURES AND FACILITIES

#### *Objectives:*

- Create a native prairie planting area with a nature trail in appropriate areas of the park.
- Include native planting “vignettes” within the parklands and along the trails to help prevent soil erosion and increase stormwater infiltration, and to educate users on the plant and animal species present in the local area.
- Preserve natural features on proposed park sites to the maximum extent feasible, in consideration of the proposed multiple-use character of the Township's parks.
- Support the efforts of the Amenities and Beautification Committee (ABC) to assist with planning, maintenance and development of gardens, nature trails, vignettes and wildlife habitats.
- Incorporate natural and historic resource protection, including protection of groundwater recharge areas, into the parks and recreation program whenever the opportunity presents itself.
- Include informational/interpretive signage in areas of significance as it relates to natural and historical resources.

## GOAL #6: FUNDING AND FISCAL OVERSIGHT

---

### DEVELOP STABLE SOURCES OF FUNDING AND PRACTICE SOUND FISCAL MANAGEMENT OF THE PARKS AND RECREATION SYSTEM

#### *Objectives:*

- Pursue all available funding sources for capital improvements and operations and maintenance, including local sources, state and federal grant programs, local businesses, and other sources.
- Explore opportunities for greater private sector participation in the provision of recreation and leisure services in the Township.
- Continue to cooperate and interact with all other community recreation organizations in providing recreation resources in order to avoid duplication of services and make efficient use of public funds and lands.

## GOAL #7: QUALITY OF DESIGN

---

### PROVIDE HIGH QUALITY PARKS & RECREATION FACILITIES

#### *Objectives:*

- Complete the ADA transition plan recommendations to adhere to high quality accessibility standards.
- Design well-built parks and recreation facilities and equipment with quality materials that will reduce routine maintenance costs.
- Consider the cost of maintenance and operation in designing new recreation facilities.
- When planning and developing a park site, consider its overall appearance and its potential impact on adjoining uses and the surrounding neighborhood.
- Design future parks in Hamburg Township to be symbiotic with the environment on and surrounding the park sites.
- Design the parks so they enhance the aesthetic quality and cultural values of the Township.

## GOAL #8: CONTINUE TO BE A REGIONAL RECREATION DESTINATION

---

### PROVIDE RECREATIONAL OPPORTUNITIES THAT ARE EITHER UNAVAILABLE OR INACCESSIBLE TO RESIDENTS IN THE REGION

#### *Objectives:*

- Consider equestrian amenities at Pettysville Trailhead and to support equestrian activities.
- Expand the community garden at the Senior Community Center.
- Develop linking paths, greenways, and complete streets to provide better access to amenities.
- Review regional recreation opportunities and determine a deficiency in level of service and consider adding those identified amenities to the Township parks.



## GOAL #9: TRANSPORTATION AND ACCESS

---

### IMPROVE ACCESS AND MULTI-MODAL TRANSPORTATION OPTIONS TO PARKS AND RECREATION FACILITIES

#### *Objectives:*

- Develop a safe connection across Merrill Road to connect the east and west sides of Manly W. Bennett Memorial Park.
- Pave Manly W. Bennett Memorial Park and Lakelands Trail gravel parking lots and bring accessible parking into compliance with the current ADA standards in all areas.
- Connect the Lakelands Trail with parking areas wherever appropriate.
- Develop biking/hiking path systems to meet the alternate transportation, scenic, and athletic needs of the Township.
- Provide pedestrian and bicycle paths separate from the vehicular routes to create safe circulation to and within all parks.
- Utilize natural feature areas as connections between parks and recreation facilities.
- Work with Planning Commission and Planning Department to consider pedestrian connections to recreation properties and trails when approving site plans for new subdivisions, PUDs, or other appropriate land uses.
- Work with school system to obtain Safe Routes to School status.
- Promote new recreation opportunities and access points associated with the Huron River Water Trail and enhance the existing access point at Halls Creek.
- Develop secondary connections to Lakelands Trail, both with the existing Township and State Park facilities and from the community at large.

## GOAL #10: RECREATION PROGRAMMING

---

### WORK WITH PINCKNEY COMMUNITY EDUCATION, THE HAMBURG LIBRARY, THE HAMBURG SENIOR COMMUNITY CENTER, AND OUR OTHER COMMUNITY PARTNERS TO DEVELOP, IMPROVE, AND OFFER A COMPREHENSIVE RANGE OF RECREATION PROGRAMS.

#### *Objectives:*

- Promote and implement recreation programming at parks, in cooperation with all community recreation organizations who offer their services.
- Encourage programs to serve the changing demographics of the Township, including passive and active recreation programs, instructional programs, sports leagues, adaptive recreation programs, and other programs to address the varied interests of residents.
- Encourage programs which address the needs of special segments of the population, such as senior citizens, persons with disabilities, and youth.

## GOAL #11: PLANNING

---

### MAINTAIN AN ONGOING PARKS AND RECREATION PLANNING PROCESS

#### *Objectives:*

- Review and update the parks and recreation plan, particularly the five-year capital improvement plan, during the budget cycle.
- Provide for citizen input in recreation planning and decision-making.
- Adopt a current Parks and Recreation plan no less than every five years.
- Work with the Township Board to develop an annual budget to meet park and recreation needs.
- Parks and Recreation Committee and staff to develop Capital Improvements Plan/ project list for consideration by Township Board annually.

## GOAL #12: LAND ACQUISITION

---

### WHEN APPROPRIATE, IDENTIFY OPPORTUNITIES TO PRESERVE LAND FOR RECREATIONAL, EDUCATIONAL, AND ENVIRONMENTAL PRESERVATION PURPOSES.

#### *Objectives:*

- Remain open to opportunities to expand parks and recreation options in the Township in a manner that is not in detriment to the existing facilities and responsibilities.
- Prioritize access to high quality natural features such as water bodies, wetlands, and wooded areas.
- Prioritize non-motorized transportation connections to existing recreation facilities.
- Acquire more park land to support nature trails and access to water.
- As the Township develops, acquire additional land for future park development to provide a more uniform geographic distribution of facilities.



With goals and objectives in place, Hamburg Township has developed an accompanying 5-Year Action Plan that will enable the Township to move toward accomplishing the goals and objectives outlined in the Recreation Plan. The action program is used to highlight specific projects which will maintain and improve the quality and diversity of amenities in the parks.

Potential projects are shown in Table 13 on the following page. Each of these action items relates to one or more of the goals from the previous Goals and Objectives Section. They have each been assigned a priority level of 1, 2, or 3. The potential capital improvements that are listed in Table 13 have been established to provide a framework for decision makers, and to enable the Township to apply for grant funding for those proposed projects.

The project list is not a fixed element, nor is it exhaustive. It reflects the results of the input received from the Township staff, the public hearing, and the online survey. Future circumstances, especially availability of funding, may influence the order in which the projects are completed.

Table 12 – Action Table Key

Action Item List - Key	
Timeframe	
Short-range	0 - 2 Years
Mid-range	3 - 5 Years
Long-range	5 + Years
Ongoing	Ongoing
Funding Sources	
TF	Township Funds
G	Grants
PD	Private Donations
CP	Community Partners
V	Volunteers

Table 13 –Five Year Action Table

GENERAL PARK AND GROUND IMPROVEMENTS			
IMPROVEMENT DESCRIPTION	FACILITY	TIMEFRAME	FUNDING SOURCES
<b>Manly W. Bennett Park</b>			
Install water bottle filling stations at restrooms	Manly Bennett Park	3 - 5 Years	G, TF, CP, PD, V
Construct a dog park	Manly Bennett Park	3 - 5 Years	G, TF, CP, PD, V
Buy scheduling software & provide staff training	Manly Bennett Park	0 - 2 Years	G, TF
Design and install an unified wayfinding signage system including an informational kiosk & campus map	Manly Bennett Park	0 - 2 Years	G, TF, CP, PD, V
Provide bike racks/bike repair stations and rental	Manly Bennett Park	5 + Years	G, TF, CP, PD, V
Identify an area for development of outdoor amphitheater for community events, movies, and music in the park	Manly Bennett Park	5 + Years	G, TF, CP, PD, V
Storage building for Building and Grounds, Parks, and Senior/Community Center	Manly Bennett Park	0 - 2 Years	TF, G
Find a viable solution for restroom facilities in parklands (including concession stand)	Manly Bennett Park	Ongoing	TF, G
Design and install additional pickleball courts	Manly Bennett Park	0 - 2 Years	G, TF, CP, PD, V
Install a universally accessible play area (60x60) - to replace the existing playgrounds and ensure safety/ADA compliance	Manly Bennett Park	0 - 2 Years	G, TF, CP, PD, V
Purchase Sporting Equipment, if necessary	Manly Bennett Park	Ongoing	TF, CP, G, PD
Install a reading pavilion near the Library	Manly Bennett - East	5 + Years	G, TF, CP, PD, V
Maintain parking area with future replacement of barriers/posts	Manly Bennett - East	Ongoing	G, TF, CP, PD, V
Construct a storage/office facility	Manly Bennett - East	5 + Years	G, TF, CP, PD, V
Designate a sledding hill area	Manly Bennett - East	0 - 2 Years	G, TF, CP, PD, V
Install electricity to all backstops	Manly Bennett - East - Baseball	3 - 5 Years	G, TF, CP, PD, V
Install new lighting at an additional baseball field	Manly Bennett - East - Baseball	5 + Years	G, TF, CP, PD
Install irrigation at baseball fields with Midway project	Manly Bennett - East - Baseball	5 + Years	G, TF, CP, PD, V
Design and install a splash pad in the Midway	Manly Bennett - East - Midway	5 + Years	G, TF, CP, PD, V



GENERAL PARK AND GROUND IMPROVEMENTS			
IMPROVEMENT DESCRIPTION	FACILITY	TIMEFRAME	FUNDING SOURCES
<b>Manly W. Bennett Park</b>			
Install lawn games such as cornhole, bocce ball, checkers, and horseshoes in the Midway area	Manly Bennett - East - Midway	5 + Years	G, TF, CP, PD, V
Install Flyer's Runway safety screening	Manly Bennett - East - RC Field	0 - 2 Years	G, TF, CP, PD, V
Install a picnic pavilion w/ storage at RC Field	Manly Bennett - East - RC Field	0 - 2 Years	G, TF, CP, PD, V
Install new security lighting at RC Field	Manly Bennett - East - RC Field	3 - 5 Years	G, TF, CP, PD
Install irrigation at RC Field	Manly Bennett - East - RC Field	5 + Years	G, TF, CP, PD, V
Construct a RC truck track	Manly Bennett - East - RC Field	0 - 2 Years	G, TF, CP, PD, V
Construct an Additional Sand Volleyball Court	Manly Bennett - East - Volleyball	5 + Years	G, TF, CP, PD, V
Construct a storage/office facility	Manly Bennett - West	5 + Years	G, TF, CP, PD, V
Complete the West Park loop with pavement and/or other accessible surfacing	Manly Bennett - West	3 - 5 Years	G, TF, CP, PD, V
Design and install phase 2 of adult fitness station	Manly Bennett - West - Fitness Station	5 + Years	G, TF, CP, PD, V
<b>Winkelhaus Park</b>			
If available, acquire park property	Winkelhaus Park - Leased	5 + Years	TF, G, PD
Construct stairway from park down to Village Trailhead parking	Winkelhaus Park - Leased	5 + Years	TF, G, PD
<b>Mike L. Levine Lakelands Trail State Park</b>			
Secondary Connections from neighborhoods and businesses to Lakelands Trail	Lakelands Trail	3 - 5 Years, Ongoing	TF, G
Unified Signage and Wayfinding System	Lakelands Trail	0 - 2 Years	G, TF, CP, PD, V
Identify and install equestrian amenities	Lakelands Trail	5 + Years	G, TF, PD, V
Provide/maintain dog waste stations along trail	Lakelands Trail	Ongoing	TF, G, PD
Investigate composting/vault toilets at trailheads	Lakelands Trail	5 + Years	TF, G, PD
Relocate/Update Amenities, when needed	Lakelands Trail	Ongoing	TF, G, PD
Replace Huron River Bridge, investigate bridge types (free span)	Lakelands Trail	0 - 2 Years	G, TF, PD, V

GENERAL PARK AND GROUND IMPROVEMENTS			
IMPROVEMENT DESCRIPTION	FACILITY	TIMEFRAME	FUNDING SOURCES
Cont. Mike L. Levine Lakelands Trail State Park			
Replace small pedestrian bridge (behind Carpet Depot)	Lakelands Trail	0 - 2 Years	G, TF, PD, V
Provide ADA picnic tables, parking, and access to restrooms	Merrill Trailhead	3 - 5 Years	PD, V, G, TF
Senior/Community Center			
Install game tables, Interior and Exterior	Senior/Community Center	3 - 5 Years	G, TF, CP, PD, V
Develop an all ages Community Center - either in cooperative effort with other organizations or with expansion of existing facilities	Senior/Community Center	5 + Years	G, TF, CP, PD, V
Install ADA auto-access doors to patio	Senior/Community Center	0 - 2 Years	G, TF, CP
Provide shade over outdoor patio	Senior/Community Center	0 - 2 Years	G, TF, CP, PD, V
Upgrade flooring	Senior/Community Center	0 - 2 Years	G, TF, CP, PD, V
Investigate maximizing building space to accommodate programming and office space	Senior/Community Center	3 - 5 Years	G, TF, CP, PD, V
Consider an addition to the senior center - connecting to the library	Senior/Community Center	5 + Years	G, TF, CP, PD, V
General Parks and Grounds Improvements			
Support farmer's market effort	Township Grounds & Gardens	5 + Years	PD, V
Repair clock tower and upgrade plantings	Township Grounds & Gardens	5 + Years	TF, CP, PD, V
Provide upgraded garbage cans & enclosed dumpsters for parklands	Parklands and Trail Systems	3 - 5 Years	G, TF, CP, PD, V
Find a viable solution for restroom facilities in parklands	Parklands and Trail Systems	Ongoing	G, TF, CP, PD
Install picnic pavilions	Parklands and Trail Systems	5 + Years	G, TF, CP, PD
Install new lighting	Parklands and Trail Systems	5 + Years	G, TF, PD, RP
Install surveillance equipment	Parklands and Trail Systems	5 + Years	G, TF, RP, PD, V
Complete all projects on the ADA priority list	System-wide improvements	Ongoing	G, TF, CP, PD, V
Wi-Fi Access at Parklands, Winkelhaus Park, and Lakelands Trail Trailhead	Parklands and Trail Systems	3 - 5 Years	G, TF, CP, PD
Develop walking trail for park/nature area adjacent to future dog park	Parklands and Trail Systems	3 - 5 Years	G, TF, CP, PD, V

GENERAL PARK AND GROUND IMPROVEMENTS			
IMPROVEMENT DESCRIPTION	FACILITY	TIMEFRAME	FUNDING SOURCES
Cont. General Parks and Grounds Improvements			
Investigate and design non-motorized transportation routes that connect to Brighton Recreation Area	System-wide improvements	5 + Years	G, TF, CP, PD, V
Purchase/operate access to River/Lakes/Livery - to support Huron Water Trail in Hamburg Township	Future Acquisition	Ongoing	G, TF, CP, PD, V
Purchase/operate Rush Lake Golf Course property for potential park revenue	Future Acquisition	Ongoing	G, TF, CP, PD, V
Amenities and Beautification Committee			
Construct benches with companion seating along Lakelands Trail/Trailheads	Lakelands Trail	Ongoing	V, PD, TF, G
Install flora identification signs/interpretive signage along trail	Lakelands Trail	Ongoing	V, PD, TF, G
Install bike racks/bike repair stations	Lakelands Trail	0 - 2 Years	G, TF, CP, PD, V
Develop an Amenities and Beautification Committee and support the Volunteer force for garden projects	Parklands and Trail Systems	Ongoing	V, PD, TF, G
Install public art in gardens and along trail	Parklands and Trail Systems	Ongoing	G, CP, PD, V
Construct benches with companion seating along Lakelands Trail/Trailheads	Lakelands Trail	Ongoing	V, PD, TF, G



Table 14 – ADA Accessibility Projects – ADA Transition Plan

ADA Accessibility Projects - ADA Transition Plan					
Improvement Description	Facility	Timeframe	Funding Sources	ADA Transition Plan Item	ADA Priority Code
<b>Manly Bennett Park</b>					
Provide companion Seating at all diamonds	East Bennett Park - Baseball	3 - 5 Years	TF, G	Yes	2
Provide accessible route from parking to seating and dugouts - Midway	East Bennett Park - Baseball	3 - 5 Years	TF, G	Yes	2
Provide accessible picnic tables and surface	East Bennett Park - Concession	0 - 2 Years	TF, G	Yes	2
Provide accessible route & height for grill - Midway	East Bennett Park - Concession	3 - 5 Years	TF, G	Yes	2
Design and construct Midway to allow ADA access to facilities/fields	East Bennett Park - Midway	0 - 2 Years	G, TF, CP, PD, V	Yes	1
Create new parking area for t-ball (approx. 90 cars with accessible route) Reconfiguration of t-ball may be required	East Bennett Park - T-ball	0 - 2 Years	G, TF, CP, PD, V	Yes	1
Provide accessible picnic tables and surface	Manly Bennett - East - RC Field	0 - 2 Years	TF, G	Yes	2
Provide van/accessible parking in existing lot	East Bennett Park - RC Field	0 - 2 Years	TF, G	Yes	1
Provide accessible route from parking to common areas	East Bennett Park - RC Field	0 - 2 Years	TF, G	Yes	1
Provide accessible route from parking to seating	East Bennett Park - Rugby	0 - 2 Years	TF, G	Yes	1
Provide van/accessible parking in existing lot	East Bennett Park - Rugby	0 - 2 Years	TF, G	Yes	2
Provide van/accessible parking in existing lot	East Bennett Park - Volleyball	0 - 2 Years	TF, G	Yes	1
Provide accessible route from parking to volleyball court	East Bennett Park - Volleyball	0 - 2 Years	TF, G	Yes	1,2
Provide van/accessible parking in existing lot	West Bennett Park	0 - 2 Years	TF, G	Yes	1
Fill gaps in walking path	West Bennett Park	0 - 2 Years	TF, G	Yes	1



ADA Accessibility Projects - ADA Transition Plan					
Improvement Description	Facility	Timeframe	Funding Sources	ADA Transition Plan Item	ADA Priority Code
<b>Manly Bennett Park</b>					
Provide accessible route from sidewalks to common areas	West Bennett Park	0 - 2 Years	TF, G	Yes	1,2
Pave existing soccer gravel lot (280 cars)/Add ADA parking	West Bennett Park	0 - 2 Years	G, TF, PD	Yes	1
Design and construct west Midway/To allow ADA access to facilities/fields	West Bennett Park	0 - 2 Years	G, TF, CP, PD, V	Yes	1
<b>Winkelhaus Park</b>					
Provide accessible parking (including van accessible)	Winkelhaus Park - Leased	0 - 2 Years	TF, G	Yes	1
Provide accessible route to horseshoe pit	Winkelhaus Park - Leased	3 - 5 Years	TF, G	Yes	2
Provide accessible route/ramp to gazebo	Winkelhaus Park - Leased	3 - 5 Years	TF, G	Yes	2
Provide accessible picnic tables and surface	Winkelhaus Park - Leased	0 - 2 Years	TF, G	Yes	2
Construct accessible trail	Winkelhaus Park - Leased	3 - 5 Years	TF, G	Yes	2
<b>Lakelands Trail</b>					
Improve cub scout pack 391 picnic respite	Lakelands Trail	0 - 2 Years	V, PD, CP	Yes	1
Relocate/Update Amenities - i.e.: move Doggie bags closer to sidewalk, provide companion seating near benches, etc.	Lakelands Trail	0 - 2 Years	TF, G	Yes	2,3,4
Provide accessible route to portable toilets	Pettysville Trailhead	0 - 2 Years	TF, G	Yes	1
Provide accessible route to kiosk	Pettysville Trailhead	0 - 2 Years	TF, G	Yes	2
Add Parking/ADA parking	Pettysville Trailhead	0 - 2 Years	TF, G	Yes	1

ADA Accessibility Projects - ADA Transition Plan					
Improvement Description	Facility	Timeframe	Funding Sources	ADA Transition Plan Item	ADA Priority Code
<b>Cont. Lakelands Trail</b>					
Provide accessible route to Pump Track if maintained as such - Long Range plans could include development into Skate Park or re- development into Dog Park	Pettysville Trailhead	3 - 5 Years	TF, G	Yes	2
Upgrade trail alongside Merrill RR	Merrill Trailhead	0 - 2 Years	TF, G	Yes	1
Relocate/Update Amenities, when needed	Village Trailhead	3 - 5 Years	TF, G, PD	Yes	2,3,4
<b>Senior/Community Center</b>					
Upgrade to hi/lo drinking fountain	Senior/Community Center	5 + Years	TF, G	Yes	4
Upgrade interior amenities, relocate items	Senior/Community Center	3 - 5 Years	TF, G	Yes	2,3,4
Construct walkways from complex to Lakelands Trail	Senior/Community Center	0 - 2 Years	G, TF, CP, PD, V	Yes	1
<b>Township Grounds</b>					
Construct Merrill Road E/W under/overpass	Parklands and Trail Systems	0 - 2 Years	G, TF, CP, PD, V	Yes	1
<b>ABC</b>					
Upgrades to amenities and trail at all intersections	Lakelands Trail	0 - 2 Years	TF, G	Yes	1
Develop respite areas along trail	Lakelands Trail	0 - 2 Years	G, TF, V, PD	Yes	1
<b>Potentially Funded Projects</b>					
Fill gaps and correct drop in walking path	East Bennett Park - Playground	0 - 2 Years	TF, G	Yes	1
Provide accessible route from path to sand surface or provide interactive play equipment - Midway	East Bennett Park - Playground	3 - 5 Years	TF, G	Yes	2
Provide ramp, ground level play equipment - Playground Upgrade	East Bennett Park - Playground	3 - 5 Years	TF, G	Yes	2
Relocate AED Unit	East Bennett Park - Concession	0 - 2 Years	TF, G	Yes	1,2

Relocate/Remove concession counters	East Bennett Park - Concession	3 - 5 Years	TF, G	Yes	2
<b>ADA Accessibility Projects - ADA Transition Plan</b>					
Improvement Description	Facility	Timeframe	Funding Sources	ADA Transition Plan Item	ADA Priority Code
<b>Cont. Potentially Funded Projects</b>					
Relocate AED Unit	West Bennett Park - Concession	0 - 2 Years	TF, G	Yes	1,2
Repair and seal existing paths at Soccer Fields/provide ADA access to amenities	West Bennett Park	0 - 2 Years	G, TF, CP, PD, V	Yes	1
Expand and pave existing paths to rear of Soccer Fields (currently gravel)	West Bennett Park	0 - 2 Years	G, TF, CP, PD, V	Yes	1
Provide accessible route from parking to sidewalk	West Bennett Park	0 - 2 Years	TF, G	Yes	1
Relocate/Remove concession counters	West Bennett Park - Concession	0 - 2 Years	TF, G	Yes	1,2
Restroom upgrades	West Bennett Park - Concession	3 - 5 Years	TF, G, CP, PD	Yes	3,4
Playground upgrades/ongoing until entire structure can be replaced/ includes wood fiber maintenance and inspections	West Bennett Park	3 - 5 Years	TF, G	Yes	2
Provide accessible route from parking to sidewalk	West Bennett Park	0 - 2 Years	TF, G	Yes	1

# DRAFT

# 07

## PLANNING PROCESS

IN THIS CHAPTER

72 - PROCESS

72 - REVIEW AND ADOPTION



In a continuing effort to provide quality recreational opportunities for its citizens, Hamburg Township has developed this Parks and Recreation Master Plan as a tool to guide the development of community parks and recreational facilities over the next five years. This Plan is an update of the Township's most recent plan which was adopted in 2017. The Plan will provide the Township eligibility for grants from the MDNR to assist the community in reaching its recreational goals.

Hamburg Township contracted with Spicer Group of Saginaw, Michigan to assist with the completion of the Parks and Recreation Master Plan. The consultant met with the Township staff and Parks and Recreation Committee several times during the development of the Plan.

During the development of the Plan, three opportunities for input, participation, and review were provided:

- Online community input survey that was available from July to August 2022
- Community visioning session held on August 29, 2022.
- 30-day review period and public hearing held on Month Day, 2022.

The plan was also discussed at several committee and board meetings between October 2021 and July of 2022.

Based upon the existing information and public input, the Township developed the goals and objectives for parks and recreation for the next five years. Then, the Township developed an action program to accomplish the goals and objectives of the plan.

## REVIEW AND ADOPTION

Spicer Group completed a draft Parks and Recreation Master Plan which was subsequently available for review at the Township Offices and on the Township's website. The review period from DATE through DATE, was publicized on the Township website, Facebook page, and the local Cable television channel. The final opportunities for community input occurred at the advertised public hearings held prior to the adoption of the Plan at the Parks and Recreation Commission meeting on DATE, and at the Township Board meeting on DATE. After the DATE public hearing, the Parks and Recreation Committee passed a motion recommending the Township Board adopt the Parks and Recreation Master Plan. The Plan was transmitted to the Township Board for its review. The second public hearing was held at the DATE Township Board meeting. The Hamburg Township Board passed a resolution to adopt the Plan at the Township Board meeting on DATE. Copies of the Plan were transmitted to Livingston County and the Southeast Michigan Council of Governments. The Plan was uploaded to the DNR for approval in January of 2023. Copies of the notification advertisements, the public hearing minutes, and the resolution are included in Appendix I.

# DRAFT

## APPENDIX

### IN THIS CHAPTER

APPENDIX A: GRANT HISTORY

APPENDIX B: PUBLIC INPUT RESULTS

APPENDIX C: SOURCES OF RECREATION GRANT FUNDING

APPENDIX D: MIKE LEVINE LAKELANDS TRAIL STATE PARK MAP

APPENDIX E: GREAT LAKE TO LAKE TRAIL MAP

APPENDIX F: HURON RIVER WATER TRAIL MAP

APPENDIX G: LIVING LEGACY LAND MAP

APPENDIX H: ADA TRANSITION PLAN

APPENDIX I: ADOPTION DOCUMENTATION

## APPENDIX A

### GRANT HISTORY

## APPENDIX B

### PUBLIC INPUT RESULTS



## APPENDIX C

### SOURCES OF RECREATION GRANT FUNDING

## APPENDIX D

### MIKE LEVINE LAKELANDS TRAIL STATE PARK MAP

## APPENDIX E

### GREAT LAKE TO LAKE TRAIL MAP

## APPENDIX F

### HURON RIVER WATER TRAIL MAP



## **APPENDIX G**

### **LIVING LEGACY LAND MAP, SEMCOG GREEN INFRASTRUCTURE PLAN**

## **APPENDIX H**

### **ADA TRANSITION PLAN**

## APPENDIX I

### ADOPTION DOCUMENTATION

# HAMBURG TOWNSHIP RECREATION PLAN UPDATE SCHEDULE

		June '22	July '22	Aug. '22	Sept. '22	Oct. '22	Nov. '22	Dec. '22	Jan. '23	Feb. '23
<b>TASK 01</b>	-Meeting #1 - Parks Committee - June 21, 2022 Review Process, Schedule, and Survey Draft -Launch Survey - July 8, 2022 -Conduct Parks and Natural Features Inventories									
<b>TASK 02</b>	-Begin Draft of Plan -Survey Open 1-1/2 Months -Meeting #2- Parks Committee - Aug. 23, 2022 Review Survey Results, Public Input, Vision Discussion									
<b>TASK 03</b>	-Continue to work on Draft of Plan with Township Staff -Meeting #3- Parks Committee - Sept. 27, 2022 Review Goals, Objectives ,and Action Plan									
<b>TASK 04</b>	-Completion of Draft Parks & Recreation Master Plan -Meeting #4- Parks Committee - Oct. 25, 2022 Review draft to recommend to Township Board									
<b>TASK 05</b>	-Township Board Reviews & Approves Draft Plan for 30-day Public Review - Nov. 15, 2022									
<b>TASK 06</b>	-Public Hearing and Adoption of Plan by Township Board Jan. 3, 2023									
<b>TASK 07</b>	Submit Final Plan - Feb. 1, 2023									

Plan Development
Adoption



## Final Costs for Hay Creek Bridge Renovation Project – 2020-2022

Mike Levine Lakelands Trail (Bridge west of Chambers Rd.)

GL 208-800-000-975-300 (or 208-800-000-674-000)

IMEG – Engineering & Design Services/Prime Professional (Cost not to exceed \$14,000):

7/30/21 – Engineering Services - \$4,700.00

10/7/21 – Engineering Services - \$7,000.00

11/15/21 – Engineering Services - \$2,413.30

Total Engineering: \$14,113.30

LJ Construction – Bridge Contractor (\$159,300.00 original approved estimate):

**5/10/22 Change Order 1 Approved – in amount of \$25,065 (revised total cost \$184,365.00)**

6/22/22 – Bridge Materials - \$78,908.52

9/7/22 – Construction Labor & Final - \$106,331.48

Total Contractor: \$185,240.00

Misc Expenses:

4/4/22 – Cookson – Sign Vinyl for Construction - \$60.00

3/10/22 – Smart Sign – Signs for Detour - \$226.84

3/24/22 – Sign blanks for Construction - \$106.29

4/6/22 – Rotary Multiforms DNR Plaque - \$219.50

6/27/22 – American Awards Wilson Plaque - \$315.00

Total Misc: \$927.63

Project Grand Total: \$200,280.93

# Support for the Restoration of the Hay Creek Bridge on the Lakelands Trail

Community Foundation Grant – GG-20208728

Amount \$50,000 – Payment Received: 4/25/22

Images:







Please join us for our  
**RIBBON  
CUTTING**



for the  
*Hay Creek Bridge Renovation Project*



Funded by:

*Michigan Department of Natural Resources  
Ralph C. Wilson, Jr. Foundation  
Hamburg Township*



9th September, 2022 | 2:30pm  
Hay Creek Bridge west of Chambers Rd.

RSVP to [Clerk@hamburg.mi.us](mailto:Clerk@hamburg.mi.us)















Thank you Ralph C. Wilson Jr. Foundation for supporting this amazing project!

*We love our new bridge!*

Michigan Department of Natural Resources

Hamburg Township Parks & Recreation

Hamburg Township Staff

Friends of the Lakelands Trail

PLHH Chamber of Commerce

Hamburg Local Businesses & Residents





## Hamburg Township Parks & Recreation

Hamburg Township Offices  
10405 Merrill Rd., P.O. Box 157  
Hamburg, MI 48139  
(810)231-1000  
[www.hamburg.mi.us](http://www.hamburg.mi.us)

October 17, 2022

To: Parks & Recreation Committee

From: Deby Henneman, Township Coordinator

Re: Parks & Recreation Report

A final draft version of the Master Plan will be presented to the Parks Committee at the October meeting, in order for it to be recommended to the Township Board for their November 15, 2022 meeting to be approved for distribution and public review. Comments and suggested edits on this draft are due back to me no later than November 1, 2022 in order to be included in the final draft copy for the Board packet. Once approved, the public review period will be scheduled for 30 days and copies of the draft plan will be available on the website, as well as at Township Hall, the Senior Community Center, and Library. Once the review period is complete in December, a final draft will be recommended by the Parks & Recreation Committee at a special meeting (tentatively December 20, 2022 – 3:00 p.m.), and presented to the Township Board at a Public Hearing January 3, 2023, for adoption. Deadline to MDNR is 2/1/23.

Benches will be installed at the Village Trailhead respite and plaque proofs have been requested. We anticipate the project to be completed by early spring. There have been 2 benches installed in memory of Jim Neilson and Annette Koeble at the Merrill Trailhead. A dedication ceremony for both benches is scheduled for November 1, 2022 at 1:30 p.m. before the Township Board meeting.

I hope to revisit the PayPal topic with Accounting/Treasury by the end of this year. It was firmly placed on the back burner with all of the other projects needing my attention this summer. I believe having a digital QR code, along with a way to invoice park/senior center users, would be a huge time saver to staff and make things easier on the end user.

We will be updating some wayfinding signage in the parks that is deteriorating, and installing directional signage in the driveways. Updated pricing is being obtained from our vendor, and we hope to have the new signs up by spring 2023.

The shade structure at Pickleball has been completed and the information kiosk should be going up shortly. There will also be an information kiosk installed outside of Township Hall for the required postings.

### **Facebook Links:**

Parks & Recreation: <https://www.facebook.com/HamburgParksAndRecreation>

Lakelands Trail: <https://www.facebook.com/LakelandsTrailHamburgMI>

Winkelhaus Park: <https://www.facebook.com/WinkelhausPark>

Senior Center: <https://www.facebook.com/hamburgseniorcenter>



October 19, 2022

To: Parks and Recreation Committee  
From: Julie Eddings, Senior Program Director  
Re: Senior Center Director's Report

**September Statistics:**

- Monthly Attendance: 2347
- Daily Average: 112
- Transportation Daily Average: 15
- Number of New Members: 27

**Upcoming Closures:**

- Tuesday, November 8, 2022-Elections Day
- Friday, November 18, 2022-Holiday Bazaar Set Up
- Thursday and Friday, November 24-25, 2022-Thanksgiving Holiday

**Upcoming Programming:**

- Veterans Lunch on November 4
- Village Travelers Iceland informational meeting on November 10
- King Tut Immersion on November 14
- Book Club on November 17
- Holiday Bazaar on November 19
- Lunch Bunch on November 30

**Other Information:**

- The Senior Center reached 1000 members in September.
- The Annual Bazaar Fundraiser will be held on Saturday, November 19 from 9 am to 2 pm.



Hamburg Township Offices  
10405 Merrill Rd., P.O. Box 157  
Hamburg, MI 48139  
(810)231-1000  
[www.hamburg.mi.us](http://www.hamburg.mi.us)

## **Memorandum**

Date: October 3, 2022

To: Parks & Recreation Committee

From: Deby Henneman, Township Coordinator

Re: Scholarship Request - East Michigan Panthers – Fall 2022

We have received a request from the captioned user group to assist with participant fees for their fall 2022 season. They would like to request funding as follows:

- 1 Jr. Varsity Player (Fee \$275) – Family #1 - \$150 each
- 2 Middle School Player (Fee \$250) – Family #2 - \$150 each

Total amount requested: \$300

The group is a 501©(3) organization and requires fundraising from their participants, which will be used to offset some of the additional costs for the fees. I have confirmed that both of these requests are for Hamburg residents.

**TO:** Township Board of Trustees

**FROM:** Deby Henneman, Township Coordinator

**DATE:** October 13, 2022

**AGENDA ITEM TOPIC:** Parks & Rec – Park Use App – PCS Cross Country Invitational

Number of Supporting Documents: 3

---

**Requested Action**

**Motion to approve the Park Use application for the Pinckney High School Cross Country Invitational, scheduled for November 1, 2022 from 1:00 p.m. to 7:00 p.m. to be held on the East side of Manly Bennett Park, with use of the West side of the park for bus parking. Public Safety has deemed the event a Medium Hazard level, and it is agreed that all park and public safety fees should be waived.**

**Background**

Due to time constraints, this application bypassed Parks & Recreation Committee and went directly to Public Safety. The list of concerns the Parks Committee had from the Cross-Country event held in September will be addressed, as per the Supervisor.

*Draft motion by Parks & Recreation, meeting held 9/20/22 at 3:00 p.m.:*

**Motion by Muck, supported by Michniewicz, to direct staff to draft a letter to Pinckney Schools regarding their recent event, and the concerns the Committee discussed at today's meeting including: Public Safety concerns with ground and traffic control (including crossing of Merrill Rd.), the collecting of fees without inclusion of the practice on the application for use, lack of adequate number of sanitary facilities, allowance of pets during a large event which is prohibited under the Park Use Policy, and allowance of food/vendor presence without proper approval and/or paperwork on file. Staff is further directed to report back to the Committee with any response.**

**VOICE VOTE: Ayes: 5      Absent: 0**

**MOTION CARRIED**

*This is the draft motion from Public Safety, meeting held 10/12/22 at 3:00 p.m.:*

**Motion was made by Hohl, second by Menzies, that we move forward, waive the fees and, based on the public safety approval given today, give approval to this event at a medium hazard.**

**Voice votes: Ayes: 2, Nays: 1 (Hughes)**

**Motion Carried**

*As drafted by: Danielle Price, Administrative Supervisor*

Documents attached:

- Park Use Application for 11/1/22 Event
- Certificate of Insurance – Renewal for 7/1/22 to 7/1/23 term
- Park Fee/Public Safety Rates





## Hamburg Township Manly Bennett Park

P.O. Box 157  
10405 Merrill Road  
Hamburg, Michigan 48139-0157  
(810) 231-1000 Office X-218  
(810) 231-4295 Fax

### Park Use Application

### And Release of Liability & Indemnification Agreement

(Application must be submitted 60 days before requested use)

#### Applicant Information:

Event Sponsor (or name if family or individual use): Pinckney High School Cross Country

Name of Event: Post a PR Cross Country Invitational

Type of Event: High School Cross Country Invitational Park Use Category #: Select One

Applicant Name: James Wicker

Date(s) of Event: November 1st 2022 Time(s) of Event: 1 pm - 7 pm

Applicant Address: 10255 Dexter Pinckney Rd. Suite or Apt #: \_\_\_\_\_

Applicant City: Pinckney State: MI Zip: 48169

Contact Person (present during use): James Wicker

Contact's Affiliation with Applicant: Brian Wardlow

Contact's Phone: 810 599 9543 Contact's E-Mail: jwicker@pinckneypirates.org

Event Co-applicant, if any: Tom Mcallef

All Co-applicants must also sign all applications and waivers.  
Co-applicant relationship to Applicant: XC meet director

Co-applicant's phone: \_\_\_\_\_

#### Insurance Information:

Insurance Carrier: You have insurance information already from previous events exp 7/1/22

Certificate of Insurance must be provided by all applicants as outlined in Appendix B in the Park Facility Use Policy.

Policy #: \_\_\_\_\_ Expiration Date: \_\_\_\_\_

Limit of General Liability: \_\_\_\_\_ Occurrence \_\_\_\_\_ Aggregate \_\_\_\_\_

Umbrella Coverage Limit (if any): \_\_\_\_\_ Occurrence \_\_\_\_\_ Aggregate \_\_\_\_\_



**Event Description:** *(any information that doesn't pertain to your event please indicate not applicable)*

Please describe the event you propose to host: High School Cross Country invitational there will be six races total

Total Number of participants/spectators/guests anticipated during event: 2,000

Average of participants/spectators/guests anticipated at any given time: 2,000

Site of Proposed Event; include all areas of the parklands that will be used: East Bennett Park, but will need West Bennett for Bussing.

*Include site plan drawing reflecting all areas of the Township Park and recreational facilities the event will effect*

Will there be camping and trailer facilities? If so, are overnight stays anticipated: no

Number of Volunteers: 20 Are Volunteers trained?: yes  
*Please attach copy of Volunteer Handbook if applicable*

Will tents be used?: Team tents If so, please indicate locations: South Baseball fields

Please show location on map

*Under no circumstances are tent stakes to be driven into asphalt surfaces. Tent locations must be pre-approved.*

Will admission be charged? If so, how much: Yes \$10 per car to help fund Pinckney XC

Parking fee charged? If so, how much: See above Valet service available? jBus will drop off ea

Will Food/Beverages be served? If so, types of food and name of persons serving: May have a coffee truck  
if it is cold. He is health department approved. Also, meet tee shirt vendor tent.

- Copies of Ins & Health permits required - also fire insp.

*For anything other than pre-packaged foods, Concession Application, Health Department License and Products Liability coverage is required.*

Will there be Fireworks or any other pyrotechnic display? If so, describe: no

*Insurance requirements to be established during the event review process as stated in Appendix B of the Park Facility Use Policy.*

Will there be any animals present? If so, describe: No MHSAA rules do not allow pets at athletic events ✓

*Pets are not allowed in Parkland during events. Service Dogs are allowed with proper certification.*

Will there be Amusement rides or games? If so, describe: No

*Insurance requirements to be established during the event review process as stated in Appendix B of the Park Facility Use Policy.*



Will there be a need for vehicles to be used on Township grounds? If so, describe: Yes the timer and I will drive my truck around to set up course

*Personal vehicles require proof of Auto Liability based on the description of use and areas needing to be accessed during event.*

Will there be a need for Emergency Responders over and above what is included in the Public Safety Fee? If so, describe: Meet director has a medical person at meets and an athletic trainer will be on site.

*Hamburg Township reserves the right to require private security and/or emergency responders be present during any event.*

Specific services required from the Township, if any: None

Other information regarding your event that you feel may be helpful: This is an event that will bring a lot of people to Hamburg Twp. who normally would not be here and spending money at local businesses

### Organized Sports and/or Sporting Events:

Please indicate type of sports event: ☒ Regular Season (Games/Practices) ☐ Sports Tournament ☐ Other

If Tournament or other event, complete Event Description on Page 2 and provide additional details, if any:

### ***Release of Liability & Indemnification Agreement***

*The approval of this park use request is contingent upon receipt of all requested information, review process of the Hamburg Township Parks & Recreation Committee, and approval of the Hamburg Township Board. The applicant may be required to provide additional information as is deemed necessary by the Parks & Recreation Committee and/or Township Board, and may be required to meet with the Parks Administrator and/or Parks Coordinator to supply additional information or to answer questions. If the Park Use Application is received less than 60 days prior to the requested event date, the Parks & recreation Committee and Township Board may process the application, however, the application fee may be increased in an amount to be determined by the Parks & Recreation Committee and/or the Township Board.*

The undersigned acknowledges that he/she/they are authorized to sign this application on behalf of the applicant and that he/she/they have received a copy of all documents relating to the use of the park and recreational facilities including the Hamburg Township Park Facility Use Policy Rules and Regulations.



In further consideration of entering into this agreement, to the fullest extent permitted by law, the Applicant agrees to defend, pay on behalf of, indemnify, and hold harmless Hamburg Township, its elected and appointed officials, employees and volunteers, and others working on behalf of Hamburg Township against any and all claims, demands, suits, or loss, including all costs connected therewith, and for any damages which may be asserted, claimed, or recovered against or from Hamburg Township, by reason of personal injury, including bodily injury or death and/or property damage, including loss of use thereof, which arises out of, or is in any way connected or associated with this contract.

The Applicant covenants and agrees that it will have a representative on the premises at all times to monitor the set-up, use and tear-down of the use and all activities related to thereto and under no circumstances shall the use of the park be granted or sublet to any other group or organization without the express written permission of the Hamburg Township Board of Trustees.

Any Applicant or group or entity co-hosting an event must provide a Certificate of Insurance naming Hamburg Township as an additional insured and proof of that coverage must be provided prior to the issuance of the permit for the event. The Applicant and/or co-host of any event must comply with all rules, regulations and policies of the Township pertaining to the said use and will be ultimately responsible for any and all damages to any Hamburg Township property resulting from the use, and shall otherwise restore the Township property to its previous condition.

**Personal Property Damage Claims:** The applicant hereby releases Hamburg Township, Its elected and appointed officials, employees and volunteers, and others working behalf of Hamburg Township, from any and all liability or responsibility to the applicant or anyone claiming through or under the applicant by way of subrogation or otherwise, for any loss or damage to applicant's property resulting from any incident, except damages resulting from the gross negligence of the Township, as it relates to the activities and uses contemplated by the application. It is understood by the applicant that all private property kept, stored or maintained in and on the Hamburg Township Park and recreational facilities shall be so kept, stored or maintained at the risk of the Applicant.

Initials: JSW

**Public Health & Safety:** The applicant hereby swears and attests that they have complied with all aspects and intent, of Background Checks and that they are in compliance with the Michigan Sports Concession Law, Acts 342 & 343, Public Acts of 2012, as referenced in the Park Facility Use Policy and outlined in Appendix A. The applicant understands that falsification of the above statement and/or failure to comply with these requirements may result in the suspension and/or revocation of the use of the Hamburg Township parkland facilities.

Initials: JSW

Applicant's Signature: James Wicker Date: 10/10/22  
Co- applicant's Signature: Tom Mcalfe Date: 10/2/22  
Parks Coordinator: [Signature] Date: 10-11-22

#### For office use only

Comments: Public Safety med Hazard  
Fees waived

Meeting Approval Dates: 10/11/22 Parks & Recreation 10/12/22 Public Safety 10/18/22 Township Board

Application has been (Circle one)



Approved



Denied

Hamburg Township Representative: [Signature]





**Hamburg Township  
Parks & Recreation**

**Hamburg Township Offices  
10405 Merrill Rd., P.O. Box 157  
Hamburg, MI 48139  
(810)231-1000  
[www.hamburg.mi.us](http://www.hamburg.mi.us)**

**Memorandum**

Date: April 12, 2016

To: All Parkland User Groups

From: Deby Henneman, Parks Coordinator

Re: Vendor Inspections at Large Events/Tournaments

All vendor displays will now be required to pass a safety inspection, facilitated by the Hamburg Township Fire Department (HTFD). As part of this process, a tent permit application is required, and must be completed by the applicant who is hosting the event. The Tent Permit Application must include a list of all vendors who are expected to be present, and the date and time of their anticipated set-up. This process pertains to all vendors, in whatever type of display they sell from.

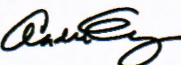
It is highly recommended that inspections be done in advance of the event start. This will allow time for the vendor to take corrective action on any issues found, and the HTFD ample time to re-inspect the display. Any vendor who is not in compliance by the start of the event, will be asked to vacate the premises.

The Tent Permit Application must be completed and returned to the Parks Department no later than 2 weeks prior to your event. Certificates of Insurance, and copies of Health Department Certificates if applicable, should be submitted to the Parks Department no later than 1 week prior to your event. I have attached the required language for Certificates for your reference. The permit fee for each application will be covered by the park fees invoiced for use of the facility.

Questions regarding this process should be directed to Fire Inspector Jordan Zernick (810) 222-1100, or Park Coordinator Deby Henneman at (810) 222-1124.



# CERTIFICATE OF INSURANCE

<b>Producer</b> <b>SET SEG</b> 1520 Earl Ave East Lansing, MI 48823			THIS CERTIFICATE IS ISSUED AS A MATTER OF INFORMATION ONLY AND CONFERS NO RIGHTS UPON THE CERTIFICATE HOLDER. THIS CERTIFICATE DOES NOT AMEND, EXTEND OR ALTER THE COVERAGE AFFORDED BY THE POLICIES BELOW.			
<b>Insured</b> <b>Pinckney Community Schools</b> 2130 E M-36 Pinckney, MI 48169			<b>COMPANIES AFFORDING COVERAGE</b> <b>A</b> MASB-SEG Property/Casualty Pool, Inc.			
THIS IS TO CERTIFY THAT THE POLICIES OF INSURANCE LISTED BELOW HAVE BEEN ISSUED TO THE INSURED NAMED ABOVE FOR THE POLICY PERIOD INDICATED, NOTWITHSTANDING ANY REQUIREMENT, TERM OR CONDITION OF ANY CONTRACT OR OTHER DOCUMENT WITH RESPECT TO WHICH THIS CERTIFICATE MAY BE ISSUED OR MAY PERTAIN, THE INSURANCE AFFORDED BY THE POLICIES DESCRIBED HEREIN IS SUBJECT TO ALL TERMS, EXCLUSIONS AND CONDITIONS OF SUCH POLICIES.						
CO LTR	TYPE OF INSURANCE	POLICY NUMBER	EFFECTIVE DATE	EXPIRATION DATE	LIMITS	
<b>A</b>	<b>GENERAL LIABILITY</b> <input checked="" type="checkbox"/> Comprehensive Form <input checked="" type="checkbox"/> Premises/Operations <input checked="" type="checkbox"/> Products/Completed Operations <input checked="" type="checkbox"/> Broad Form Property Damage <input checked="" type="checkbox"/> Personal Injury	PC- 0000359	7/1/22	7/1/23	BI & PD COMBINED OCCURRENCE  BI & PD COMBINED AGGREGATE  PERSONAL INJURY OCCURRENCE  PERSONAL INJURY AGGREGATE	\$1,000,000  N/A  \$1,000,000  N/A
DESCRIPTION Hamburg Township Parks and Recreation are hereby added as an additional insured for liability but only in respects to the school activities performed at Manly Bennet Park by or on behalf of the named Insured for the 2022 to 2023 school year.						
CERTIFICATE HOLDER Hamburg Township – Manley Bennett Park 10405 Merrill Rd. Whitmore Lake, MI 48189			SHOULD ANY OF THE ABOVE DESCRIBED POLICIES BE CANCELLED BEFORE THE EXPIRATION DATE THEREOF, THE ISSUING COMPANY WILL ENDEAVOR TO MAIL <b>30</b> DAYS WRITTEN NOTICE TO THE CERTIFICATE HOLDER NAMED TO THE LEFT, BUT FAILURE TO MAIL SUCH NOTICE SHALL IMPOSE NO OBLIGATION OR LIABILITY OF ANY KIND UPON THE COMPANY, ITS AGENTS OR REPRESENTATIVES.			
AUTHORIZED REPRESENTATIVE <div style="display: flex; justify-content: space-between; align-items: flex-start; padding-top: 20px;"> <div style="width: 60%;">             Andrea Schray            PROPERTY/CASUALTY DEPARTMENT         </div> <div style="width: 35%; text-align: right;">           Date October 12, 2022         </div> </div>						



10405 Merrill Road  
P.O. Box 157  
Hamburg, MI 48139  
(810) 231-1000  
[www.hamburg.mi.us](http://www.hamburg.mi.us)

---

Supervisor Pat Hohl Clerk Mike Dolan Treasurer Jason Negri Trustees Bill Hahn, Patricia Hughes, Chuck Menzies, Cindy Michniewicz

---

## **BOARD OF TRUSTEES REGULAR MEETING**

**Tuesday, October 18, 2022 at 7:00 PM**

**Hamburg Township Hall Board Room**

### **MINUTES**

#### **CALL TO ORDER**

Hohl called the meeting to order at 7:00 pm.

#### **PLEDGE TO THE FLAG**

#### **ROLL CALL OF THE BOARD**

##### **PRESENT**

Pat Hohl  
Mike Dolan  
Bill Hahn  
Chuck Menzies  
Cindy Michniewicz  
Patricia Hughes

##### **ABSENT**

Jason Negri

#### **CALL TO THE PUBLIC**

A call was made with no response.

#### **CONSENT AGENDA**

Motion to approve as presented.

Motion made by Menzies, Seconded by Hahn.

Voting Yea: Hohl, Dolan, Hahn, Menzies, Michniewicz, Hughes

1. DPW Monthly Report - September 2022
2. Approved Special MUC Minutes - September 07, 2022
3. Public Safety Monthly Report September, 2022
4. Board of Trustees Regular Meeting Minutes October 04, 2022



5. AP BILLS LIST 10-18-22
- \* 6. Correspondence - Parks & Rec - Hamburg Fun Fest - Email from Resident.101122

#### **APPROVAL OF THE AGENDA**

Motion to approve as presented with the addition of #15 ZBA Refund.

Motion made by Hughes, Seconded by Michniewicz.

Voting Yea: Hohl, Dolan, Hahn, Menzies, Michniewicz, Hughes

#### **UNFINISHED BUSINESS**

7. Tax Levy Resolution 2022

Motion to approve the resolution for the 2022 Tax Levy in the packet with an updated, corrected and final dollar amount.

Motion made by Dolan, Seconded by Hughes.

Roll Call Voting Yea: Hohl, Dolan, Hahn, Menzies, Michniewicz, Hughes

#### **CURRENT BUSINESS**

8. MMTA PRIME Award Presentation - Tricia Wiggle-Bazzy

MMTA awarded Tricia Wiggle-Bazzy with their PRIME award.

9. Camera Systems for Fire Stations

Motion to authorize the procurement of the camera system through Data Net as outlined in Chief Duffany's memo dated October 13, 2022 at a cost not to exceed \$57,270.23.

Motion made by Hohl, Seconded by Menzies.

Voting Yea: Hohl, Dolan, Hahn, Menzies, Michniewicz, Hughes

10. Purchase of Fire Turnout Gear

Motion to approve the purchase of turnout gear as outlined in Chief Duffany's memo dated October 13, 2022 from Municipal Emergency Services of Sanford, Michigan for a cost of \$28,080.00.

Motion made by Hohl, Seconded by Hughes.

Voting Yea: Hohl, Dolan, Hahn, Menzies, Michniewicz, Hughes



11. Aquatic Weed Harvesting SAD - Mechanical Cut & Removal Contract for 2023 and 2024

Motion to authorize the Supervisor and Clerk to sign the contract presented in the packet.

Motion made by Hahn, Seconded by Menzies.

Voting Yea: Hohl, Dolan, Hahn, Menzies, Michniewicz, Hughes

12. Hamburg Twp. Aquatic Weed Harvesting SAD - Aquatic Herbicide Treatments for 2023 and 2024

Motion to authorize the Supervisor Hohl and Clerk Dolan to sign the contract dated October 07, 2022 for years 2023/2024 and that the accompanying cost sheet and bid sheets give various costs for application of various chemicals used or that could be contemplated to be used in the Aquatic Weed Control SAD.

Motion made by Hohl, Seconded by Hahn.

Voting Yea: Hohl, Dolan, Hahn, Menzies, Michniewicz, Hughes



13. Parks & Rec - Park Use App - PCS Cross Country Invitational - November 01, 2022

Motion to approve the event waiving the fees and acceptance of the Public Safety recommendation of a medium hazard event.

Motion made by Hohl, Seconded by Menzies.

Voting Yea: Hohl, Dolan, Hahn, Menzies, Michniewicz, Hughes

14. S.A.D. Exemption from Sewer Tap Fee Increase Request

Motion to approve the reduction in the tap fee from \$7,500 to \$2,500 specifically and only for those instances where the tap fee is being issued in a district that has an approved special assessment district.

Motion made by Hohl, Seconded by Michniewicz.

Voting Yea: Hohl, Dolan, Hahn, Menzies, Michniewicz, Hughes

15. ZBA Refund

Motion to direct accounting to issue a refund in the amount of \$500 to Geoffrey Galliher at 3631 Higgins Dr., this is a reimbursement for a ZBA application from June 28, 2022, that application fee was paid and subsequent to that a review of other requests reveal that the request was not necessary and the item was removed from the agenda and the \$500 ZBA fee needs to be refunded.

Motion made by Hohl, Seconded by Dolan

Voting Yea: Hohl, Dolan, Hahn, Menzies, Michniewicz, Hughes

**CALL TO THE PUBLIC**

A call was made with no response.

**BOARD COMMENTS**

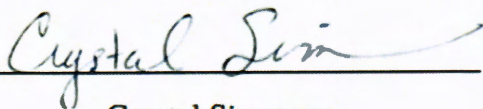
**ADJOURNMENT**

Motion to adjourn at 7:35 pm.

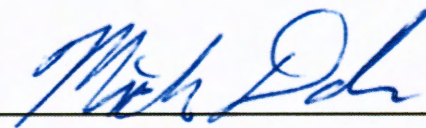
Motion made by Menzies, Seconded by Michniewicz.

Voting Yea: Hohl, Dolan, Hahn, Menzies, Michniewicz, Hughes

Respectfully submitted,

A handwritten signature in blue ink, appearing to read "Crystal Simmons", written over a horizontal line.

Crystal Simmons  
Recording Secretary

A handwritten signature in blue ink, appearing to read "Mike Dolan", written over a horizontal line.

Mike Dolan  
Township Clerk



# Hamburg Township

FAX: 810-231-4295  
PHONE: 810-231-1000  
www.hamburg.mi.us



P.O. Box 157  
10405 Merrill Road  
Hamburg, Michigan 48139

## A GREAT PLACE TO

### PUBLIC SAFETY COMMITTEE MEETING

Hamburg Township Hall  
10405 Merrill Road  
Hamburg Township, MI 48139

#### AGENDA

Wednesday, October 12, 2022  
3:00 p.m.

1. Call to Order
2. Roll Call of the Committee
3. Approval of the Agenda
4. Approval of Minutes
5. Call to the Public
6. General Topics
  - A. Parks & Recreation – Park/ADA/Grant Update
7. Old Business
  - A. Police
    1. Narcan
8. New Business
  - A. Police
    1. New Officer Hiring Process
    2. Sergeant Promotional Exam Process
  - B. Fire
    1. Tanker 12 Refurbishment
    2. Captain Promotion
  - C. Parks
  - I. Cross Country
9. Adjournment

Copies to:	1	Pat Hohl	8	Fire Dept. Dir: Jeff Newton
	2	Chuck Menzies	9	Fire Dept. Ref.: Jordan Zernick
	3	Pat Hughes	10	Police Dept. Dir. Rick Duffany
	4	Mike Dolan	11	Police Dept. Rep.: Dariusz Nisenbaum
	5	Mary Kuzner	12	Police Dept. Rep: Gary Harpe
	6	Deby Henneman	13	Police Dept. Rep.: Justin Harvey
	7	Brenda Richardson	14	File