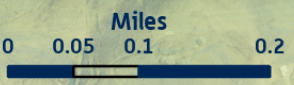
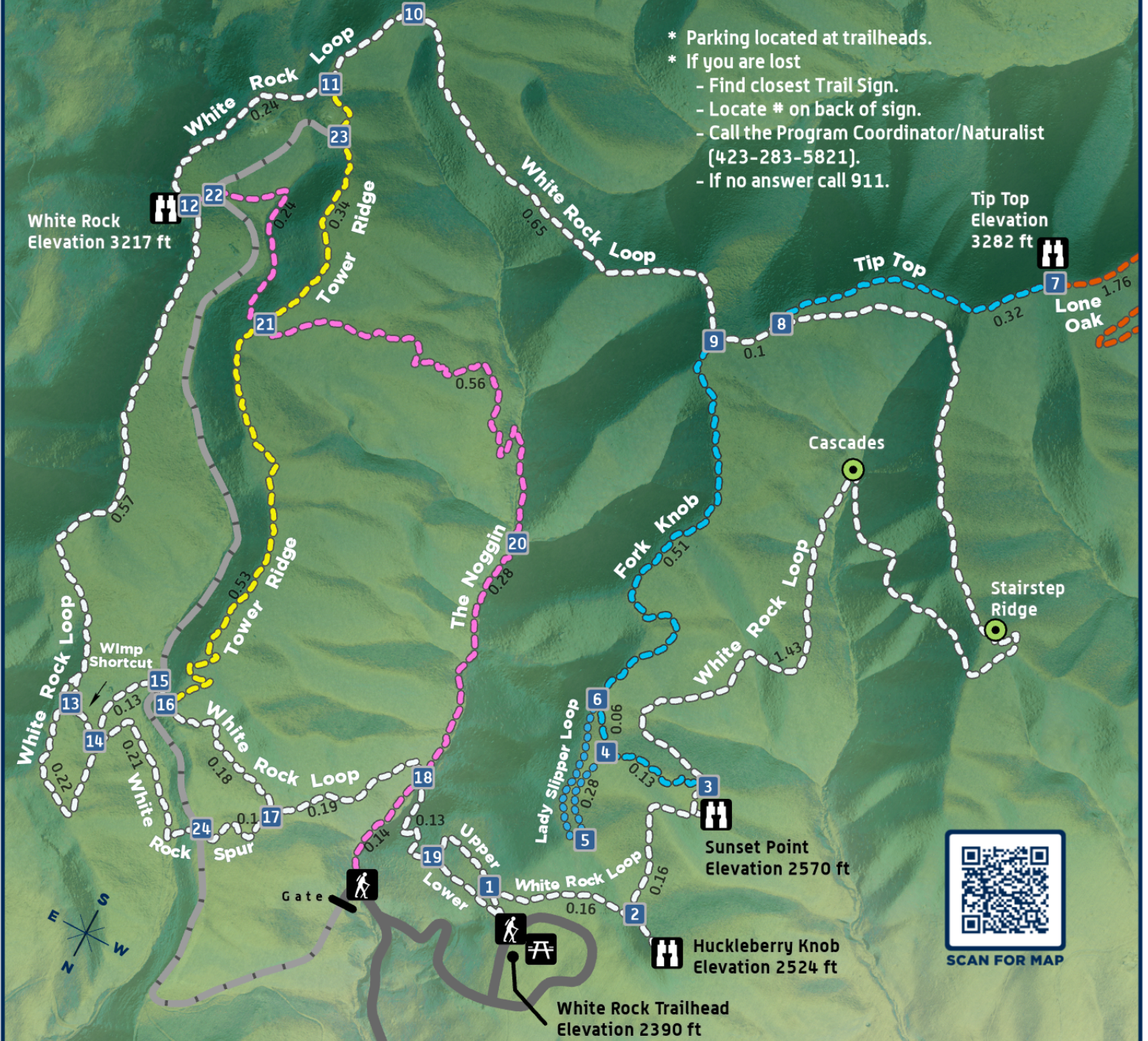


# Buffalo Mountain Park

- \* Parking located at trailheads.
- \* If you are lost
  - Find closest Trail Sign.
  - Locate # on back of sign.
  - Call the Program Coordinator/Naturalist (423-283-5821).
  - If no answer call 911.



- Trail Sign
- Trailhead
- Point of Interest
- Overlook
- Picnic Area
- Gravel
- Paved

Miles	Trail Journeys (TH = Trailhead)
0.7	Fork Knob
.77	Tower Ridge
1.29	The Noggin
2.1	Tip Top to Lone Oak to Dry Creek Road
1.25	Service Road Gate to White Rock Overlook
4.4	White Rock Loop
.76	White Rock Loop TH, East to Tower Ridge
2.6	White Rock Loop TH, East to White Rock Overlook
1.9	White Rock Loop TH, West to Fork Knob End
0.4	White Rock Loop TH, West to Fork Knob Start
.25	White Rock Loop TH, West to Huckleberry Knob
.39	White Rock Loop TH, West to Sunset Point
1.8	White Rock Loop TH, West to Tip Top