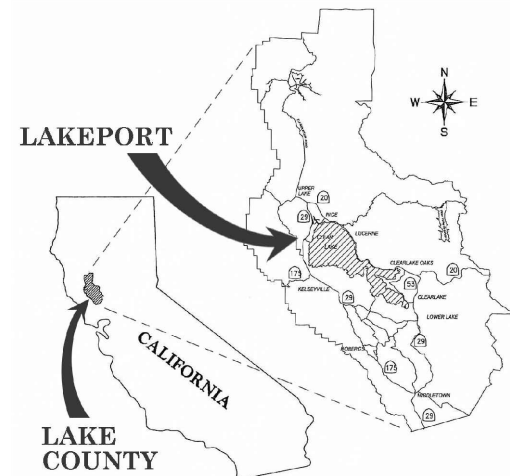


CITY OF LAKEPORT

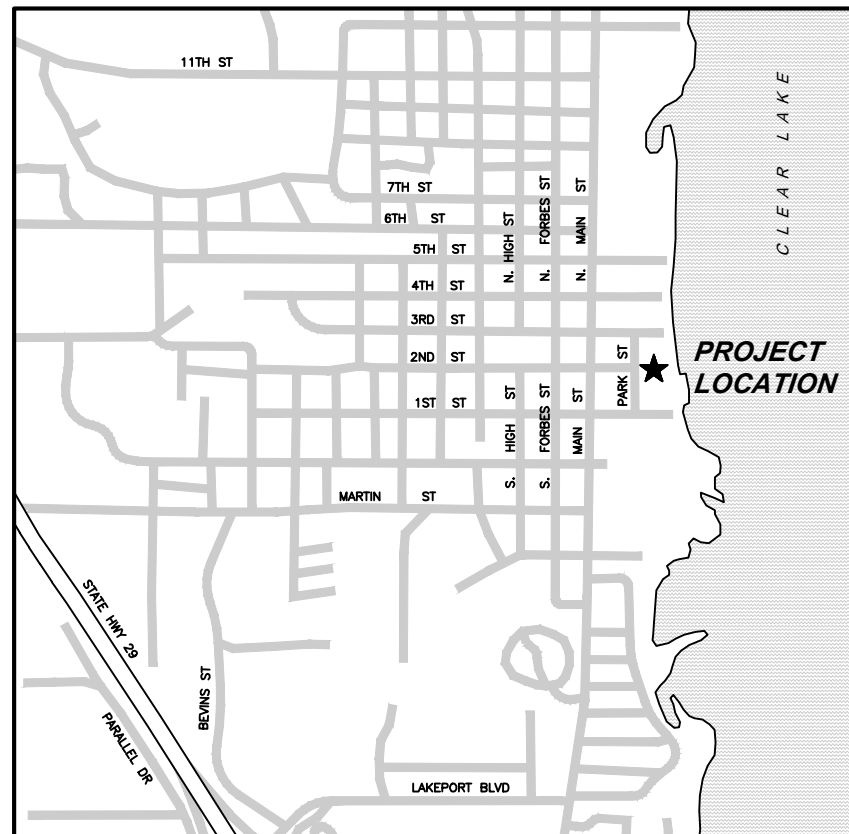
PLANS FOR

CARNEGIE LIBRARY IMPROVEMENTS

BID NO. 22-07



STATE OF CALIFORNIA/COUNTY OF LAKE
NOT TO SCALE



 CITY OF LAKEPORT: VICINITY MAP
NORTH NOT TO SCALE

CITY & UTILITY CONTACT INFORMATION:

PACIFIC GAS & ELECTRIC COMPANY
CLAY GROSSKOPF
2641 N. STATE STREET
UKIAH, CA 95482
(707) 391-4106
cwbjg@pge.com

PACIFIC GAS & ELECTRIC COMPANY
BOB SHIELDS, ASSOC. DISTRIBUTION ENGINEER
SERVICE PLANNING
1575 HIGH STREET
LAKEPORT, CA 95453
(707) 262-1902

AT&T
MIKE HOLLAND, AREA REPRESENTATIVE
2510 OLD HIGHWAY 53
CLEARLAKE, CA 95422
(707) 995-0650 OFFICE
(707) 295-8109 CELL

MEDIACOM
MIKE CARUTHERS, PLANT MANAGER
13221 EAST HWY 20
PO BOX 1180
CLEARLAKE OAKS, CA 95423
(707) 998-1184

CITY OF LAKEPORT - CORPORATE YARD
RON LADD, PUBLIC WORKS SUPERINTENDENT
591 MARTIN STREET
LAKEPORT, CA 95453
(707) 263-3578

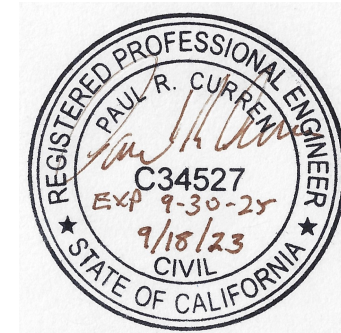
CITY OF LAKEPORT
PAUL HARRIS, UTILITIES SUPERINTENDENT
225 PARK STREET
LAKEPORT, CA 95453
(707) 263-3578

CITY OF LAKEPORT
PAUL R. CURREN, P.E., CITY ENGINEER
225 PARK STREET
LAKEPORT, CA 95453
(707) 263-5615 EXT. 407

CITY OF LAKEPORT
KEVIN M. INGRAM, CITY MANAGER
200 PARK STREET
LAKEPORT, CA 95435
(707) 263-5615 EXT. 201 OFFICE
kingram@cityoflakeport.com

CITY OF LAKEPORT
BETHANY MOSS, BUILDING OFFICIAL
225 PARK STREET
LAKEPORT, CA 95453
(707) 263-5615 EXT. 202

CITY OF LAKEPORT
OLIVIA GRUPP, PROJECT MANAGER
225 PARK STREET
LAKEPORT, CA 95453
(707) 263-5615 EXT. 406



SHEET INDEX

SHEET NO.	DESCRIPTION
1	TITLE SHEET
2	DEMOLITION PLAN
3	IMPROVEMENT PLAN

APPROVED: 

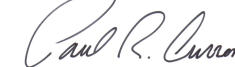
KEVIN M. INGRAM, CITY MANAGER

10/3/2023

DATE

CERTIFICATION:

I CERTIFY THAT THIS PROJECT WAS DESIGNED BY ME OR UNDER MY DIRECTION
IN ACCORDANCE WITH GENERALLY ACCEPTED ENGINEERING PRACTICES.



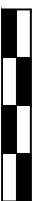
PAUL R. CURREN, PE CE 34527 EXP. 9-30-25

10/3/2023

DATE

CITY OF LAKEPORT
CARNEGIE LIBRARY IMPROVEMENTS
200 PARK STREET / LAKEPORT / CA / 95453

2nd FLOOR POWER PLAN: TITLE SHEET

VERIFY SCALE

BAR REPRESENTS
1" ON ORIGINAL

DATE APR. 2022

SCALE --

DRAWN MPW

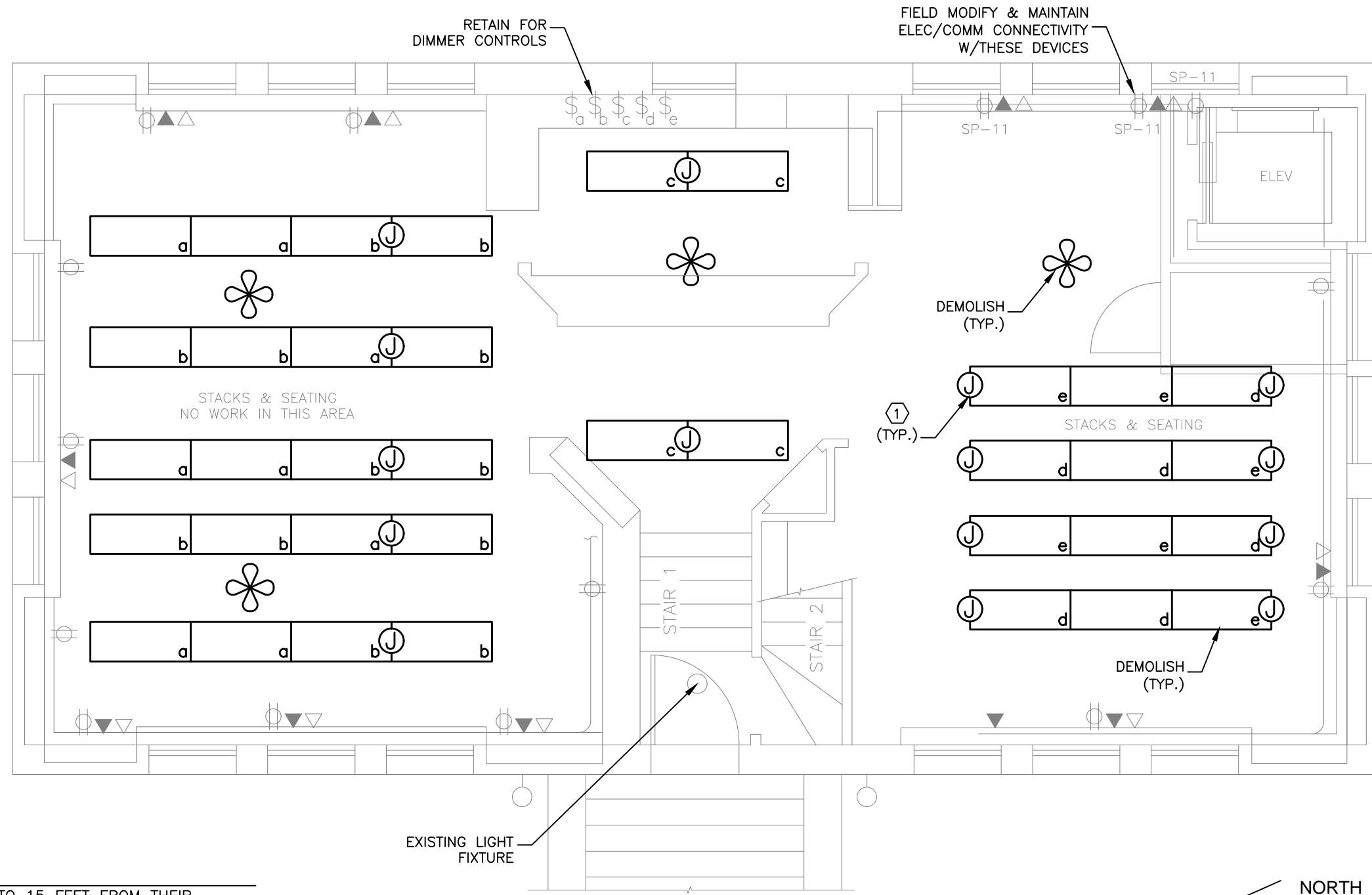
SHEET

1 of 3



CITY OF LAKEPORT
 CARNEGIE LIBRARY IMPROVEMENTS
 200 PARK STREET / LAKEPORT / CA / 95453

2nd FLOOR POWER PLAN: DEMOLITION PLAN

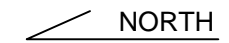


KEYED NOTES

1. RELOCATE JUNCTION BOXES UP TO 15 FEET FROM THEIR CURRENT LOCATIONS TO ACCOMMODATE NEW PENDANT FIXTURES IN THE IMPROVEMENT PLAN ON THIS SHEET.
2. DIMMER SWITCHES SHALL BE 0-10V, LUTRON OR EQUAL.
3. FIELD COORDINATE LOCATIONS OF NEW FIXTURES W/HVAC DEVICES, ATTIC ACCESS & ANY OTHER POTENTIAL CONFLICTS.
4. CONNECT FIXTURE "x" TO 120V POWER UPSTREAM OF LIGHT SWITCH CIRCUIT "a".
5. CHANDELIER SUPPLIED BY CITY, INSTALLED BY CONTRACTOR (INCLUDING ALL ELECTRICAL).
6. CEILING FAN SUPPLIED BY CITY, INSTALLED BY CONTRACTOR (INCLUDING ALL ELECTRICAL).

SHEET NOTES

1. ALL LIGHT FIXTURE LOCATIONS SHOWN ARE APPROXIMATE.



VERIFY SCALE
 BAR REPRESENTS
 1" ON ORIGINAL

DATE APR. 2022

SCALE 3/16"=1'-0"

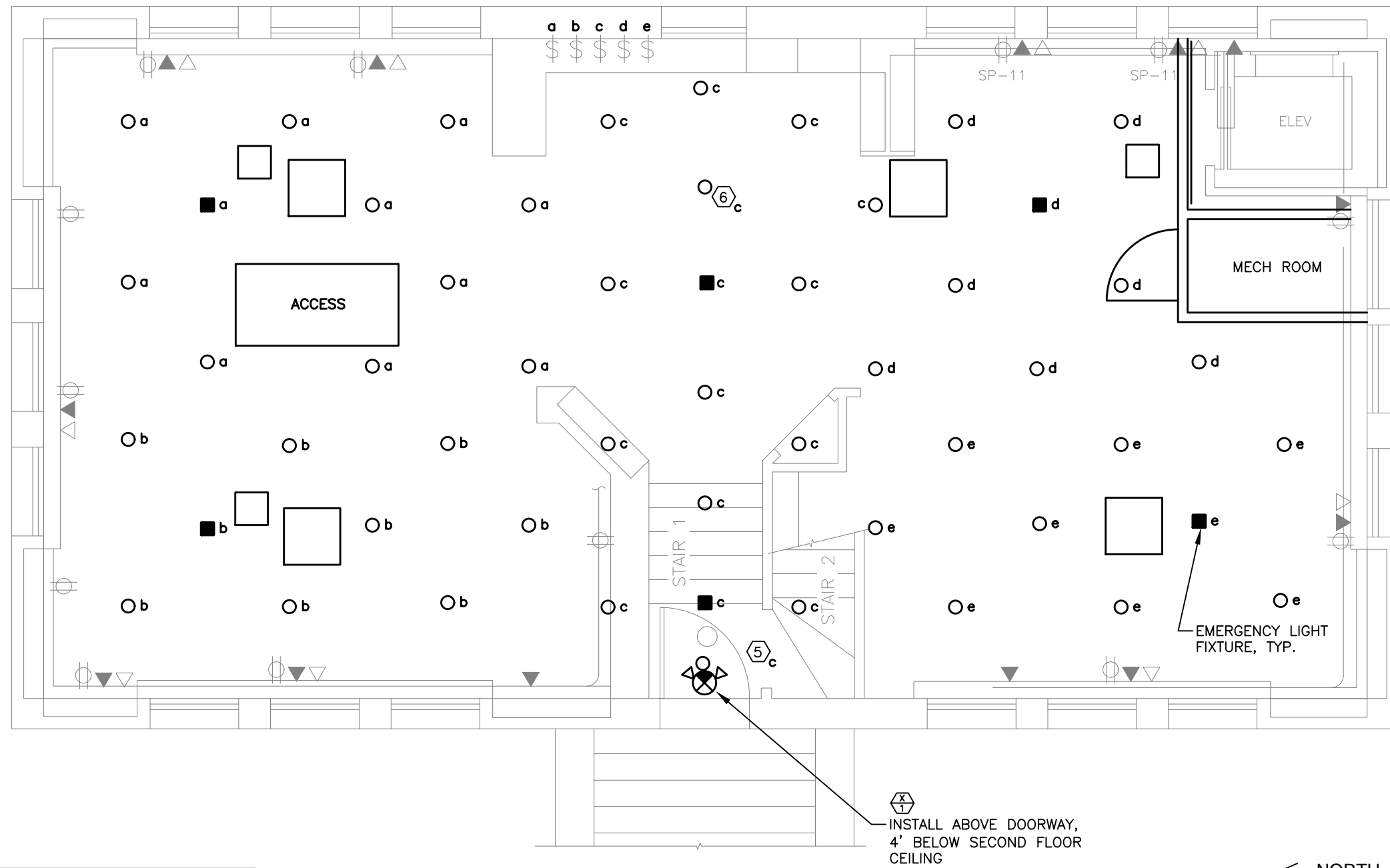
DRAWN MPW

SHEET



CITY OF LAKEPORT
 CARNEGIE LIBRARY IMPROVEMENTS
 200 PARK STREET / LAKEPORT / CA / 95453

2nd FLOOR POWER PLAN: IMPROVEMENT PLAN



KEYED NOTES

1. RELOCATE JUNCTION BOXES UP TO 15 FEET FROM THEIR CURRENT LOCATIONS TO ACCOMMODATE NEW PENDANT FIXTURES IN THE IMPROVEMENT PLAN ON THIS SHEET.
2. DIMMER SWITCHES SHALL BE 0-10V, LUTRON OR EQUAL.
3. FIELD COORDINATE LOCATIONS OF NEW FIXTURES W/HVAC DEVICES, ATTIC ACCESS & ANY OTHER POTENTIAL CONFLICTS.
4. CONNECT FIXTURE "X" TO 120V POWER UPSTREAM OF LIGHT SWITCH CIRCUIT "a".
5. CHANDELIER SUPPLIED BY CITY, INSTALLED BY CONTRACTOR (INCLUDING ALL ELECTRICAL).
6. CEILING FAN SUPPLIED BY CITY, INSTALLED BY CONTRACTOR (INCLUDING ALL ELECTRICAL).

SHEET NOTES

1. ALL LIGHT FIXTURE LOCATIONS SHOWN ARE APPROXIMATE.

VERIFY SCALE
 BAR REPRESENTS
 1" ON ORIGINAL

DATE APR. 2022

SCALE 3/16"=1'-0"

DRAWN MPW

SHEET