

LAKE COUNTY PUBLIC SERVICES  
DEPARTMENT



Reduce



Recycle!

HANDBOOK



Published by the County of Lake  
Public Services Department, CalRecycle  
City of Lakeport and City of Clearlake  
333 Second St, Lakeport, CA 95453  
[www.recycling.co.lake.ca.us](http://www.recycling.co.lake.ca.us)  
VISIT US ON FACEBOOK  
707-262-1618

## **Check out what is inside!**

|  | Page  |
|--|-------|
| 1. Index.....                                  | 1     |
| 2. Curbside service & Contact Information..... | 2     |
| 3. Learn ways to save money by recycling ..... | 4     |
| 4. Drop-off & buy-back centers.....            | 5     |
| 5. Paint disposal .....                        | 6     |
| 6. Hazardous Waste & Collection Events.....    | 7     |
| 7. Sharps disposal .....                       | 9     |
| 8. Used oil and filters.....                   | 11    |
| 9. Tires and tire disposal.....                | 12    |
| 10. Composting.....                            | 13    |
| 11. Alternatives to yard and wood waste.....   | 14    |
| 12. E-Cycle & E-Waste.....                     | 15    |
| 13. Bulky item collection program.....         | 16    |
| 14. A-Z Guide of materials and items.....      | 17-27 |
| 15. Notes .....                                | 28-30 |
| 16. Getting Kids Involved in Recycling.....    | 31-32 |



**Curbside recycling, trash and green waste service is available in Lake County.**

Do you know how convenient it is to dispose of your garbage, recycling, and green waste? Did you know curbside is available instead of traveling to a disposal site? All you have to do is call your local hauler to sign up, put your carts curbside and they will come to pick your carts up weekly at your curb!

**Cost effective, save gas and save time!**

Lake County Waste Solutions/Clearlake Waste Solutions  
1-888-718-4888 or 1-707-234-6400 or 234-6412

City of Clearlake, Clearlake Oaks, Glenhaven, Kelseyville,  
Lucerne, Nice, Upper lake, North Lakeport

South Lake Refuse and Recycling

1-707-994-8613

Cobb, Hidden Valley, Lower Lake, Middletown, Riviera  
East of Soda Bay

Lakeport Disposal

707-263-6080

City of Lakeport

lakeportdisposal.com

lkptdisposal@mediacombb.net

## **Residential Customers are entitled to many benefits!**

All recyclables go in one cart. No separating required!

Easy to maneuver roller carts provided by the hauler.

Rates as low as \$19 a month based on the size of your refuse cart: (20-gallon, 32-gallon, 64-gallon, 96-gallon). A 96-gallon green waste cart (yard waste) and a 96-gallon recycling cart at no additional charge with residential service.



Bulky item service allows two large items free each year at curbside. Call for information and an appointment (pg. 16).

## **Recycling for Commercial or Public entities, or multifamily residential dwellings of 5 units or more is mandatory by State law!**

Commercial customers in the unincorporated area of Lake County are entitled to a recycling container equal to the size of their refuse container. If you are paying for weekly collection of a 4-yard bin, you could start recycling and avoid a recycling surcharge, and pay for only a 2-yard bin.

If you would like to establish a recycling program for your business, mobile home park, or apartment complex. Call your hauler to schedule your free “waste audit”. You will be shocked at how much you can save!



***THE MORE YOU RECYCLE THE MORE YOU  
SAVE!***

**Some Common Recycling Mistakes:**

Leaving caps and lids on recyclable containers

Putting brooms and mops in the recycling bin

Putting batteries and fluorescent lights in the trash instead of taking to the household hazardous waste events .

Carpet is not recyclable (see carpet- pg. 10)

Hoses and tarps are not recyclable

Painted and treated wood are not green waste

Styrofoam and film plastic is NOT recyclable at curbside

**Ways to reduce your waste!**

1. Buy in bulk & avoid buying individually wrapped items.
2. Choose products with the least amount of packaging.
3. Bring your own reusable shopping bag.
4. Save boxes and reuse for the future.
5. Take reusable items to thrift stores

**Hospice** - 14290 Lakeshore Dr. Clearlake

1701 South Main St Lakeport

21257 Calistoga Rd. Middletown

**People Services**-395 N Main St. Lakeport

**Methodist Church** - 21216 Washington St. Middletown

**St. Vincent De Paul** - 16125 Orchard Dr. Lower Lake

**Meals on Wheels Thrift Store** - 120 N. Main St., Lakeport

## RECYCLING AND BUY-BACK FACILITIES

### Available facilities/services at time of publication



N/C=No charge

F= Fee charged call for pricing

\$\$=Redemption paid

N/A= Not Accepted

|                         | South Lake Recycling | Lake County Waste Solutions |
|-------------------------|----------------------|-----------------------------|
| Appliances              | F                    | N/C                         |
| Batteries, automotive   | N/C                  | N/C                         |
| Cardboard               | N/C                  | N/C                         |
| Televisions             | N/C                  | N/C                         |
| Glass Containers        | N/C                  | N/C                         |
| Green waste             | F                    | F                           |
| Mixed Paper             | N/C                  | N/C                         |
| Plastic Containers      | N/C                  | N/C                         |
| Scrap Non-Ferrous Metal | N/C                  | N/C                         |
| Tires                   | F                    | F                           |
| Used Oil                | N/C                  | N/C                         |
| Beverage Containers     | N/C                  | N/C                         |
| Mattresses              | F                    | F                           |
| Carpet                  | F                    | F                           |

### Clearlake Area

#### South Lake Recycling

16015 Davis Street  
707-994-8614

#### Foods Etc.

15290 Lakeshore Dr.  
707-994-6423

#### Walmart Shopping Center

15950 Dam Rd  
707-994-2950  
Tues-Sat 10a.m.-4:30p.m.

#### Clearlake Oaks

#### Red & White Market

12580 Acorn St  
707-275-0205  
Wed: 10a.m.-3p.m.

### Kelseyville Area

3575 Merritt Rd.  
707-263-6080  
Tues-Fri: 9a.m.-4p.m.  
Sat—9a.m.—2p.m.

#### Lakeport Area

#### Willow Tree Plaza

11th St. Lakeport  
Tue-Fri: 9a.m.-4p.m. &  
Sat 9a.m.-2p.m.

#### Shoreline Shopping Center

1285 S. Main St, Lakeport  
707-263-6080  
Tue-Fri: 9a.m.-4p.m. &  
Sat 9a.m.-2p.m.

### Lucerne Area

#### Lakeview Market

6804 E Hwy 20  
707-275-0205  
Thurs: 10a.m-3p.m.

#### Nice Area

#### Robinson Rancheria

1545 E Hwy 20  
707-367-4442  
Daily 8:30a.m.-3:30p.m.

# FREE Paint Disposal

## Not Accepted :

- \* Paint thinners, solvents, and oil-based paints
- \* Aerosol products / spray cans
- \* Auto marine and aircraft paints
- \* Art and craft paints
- \* Cans that are not in the original container
- \* Cans without a label or leaking
- \* Mixed paints



Recycled paint is available on a first come first serve basis at Lake County Waste Solutions in 5-gal buckets.

## Accepted for FREE:

- \* Latex and water based paints ONLY
- \* 5-gallon cans maximum per visit
- \* Must be in original can with original label



## **Disposal Sites are:**

|                             |                                 |
|-----------------------------|---------------------------------|
| Lake County Waste Solutions | Southlake Refuse & Recycling    |
| 230 Soda Bay Rd             | 16015 Davis (landfill entrance) |
| Lakeport, CA 95453          | Clearlake, CA 95422             |
| Monday-Saturday 7:30-4:00   | Daily—7:30-3:00                 |
| 888-718-4888 / 707-234-6400 | 707-994-8613                    |

## Hazardous Waste/Haz Drop

DID YOU KNOW? It is illegal to put used oil and hazardous household products such as pesticides, paints, or gasoline into your trash bin. Dumping them on the ground or into the storm drain is illegal and harms the environment. You should not store used oil or unneeded hazardous products around your house or garage.



When disposed of in the trash or poured down a sink or storm drain, the toxic chemical components in products like paint, turpentine, acid or lye-based cleaners, household and car batteries, pesticides, and herbicides will damage the environment by ending up in Clear Lake or other waterways endangering the health of all - children, wildlife, pets, and the environment. And when dumped illegally, just one gallon of motor oil can contaminate 1 million gallons of water – a year's supply for 50 people.

### Hazardous Waste Collection Events

Household hazardous waste is collected from Lake County residents the third Friday and Saturday of each month from 9:00 a.m. to 1:00 p.m. at rotating ends of the lake for convenience to all residents in Lake County. Visit [www.recycling.co.lake.ca.us](http://www.recycling.co.lake.ca.us) for more information regarding the schedule of events.

Most items are accepted free. Businesses must make an appointment and a small fee will apply.

- State law prohibits transporting of more than 15 gallons per vehicle.
- Propane tanks (any compressed gas cylinders), 5 gallon size maximum.
- Be prepared to show your ID or Identification as a Lake County resident.





# Household Hazardous Waste

## **ITEMS ACCEPTED:**

|                    |                     |                    |
|--------------------|---------------------|--------------------|
| Polishes           | Acid                | Bleach             |
| Metal cleaner      | Paint thinner       | Pool chemicals     |
| Corrosives         | Fluorescent tubes   | Gasoline           |
| Stripper           | Butane              | Cosmetics          |
| Nail polish        | Lighter fluid       | Adhesives          |
| Wood cleaner       | Solvents            | Fungicide          |
| Bleach             | Oil based paint     | Kerosene           |
| Thermometers       | Prescriptions       | Weed killer        |
| Dyes               | Rat poison          | Moth balls         |
| Batteries          | Antifreeze          | Herbicides         |
| (household)        | 5 gal Propane tanks | Toxic cleaners     |
| Cell phones        | (drained)           | Oil/Filters        |
| Printer cartridges |                     | Fluorescent lights |
|                    |                     | Tubes (and CFLs)   |

**NOT ACCEPTED:** Copy machines, large in-line printers, explosives, ammunition, and compressed gas cylinders larger than 5 gallons, medical waste, ammunition, and radioactive materials. Televisions and computer monitors are accepted at no charge at Lake County Waste Solutions in Lakeport and Southlake Refuse & Recycling at the Eastlake Landfill.

Events are hosted the third Friday and Saturday of each month from 9:00-1:00pm at alternating ends of the County at:

|  |  |
|--|--|
| Lake County Waste Solutions<br>230 Soda Bay Rd in Lakeport | Quackenbush Mtn. Resource Recovery<br>& Compost Facility in Clearlake<br>Adjacent to the Eastlake Landfill |
|--|--|

For more information:  
[www.recycling.co.lake.ca.us](http://www.recycling.co.lake.ca.us)  
 Public Services Facebook  
 707-262-1618

# Sharps Disposal



*FREE Drop-off  
available in approved  
container*



**Sharps must be properly packaged and sealed in an approved, puncture-proof container or they will not be accepted. Containers can be purchased at most local pharmacies.**

**Milk cartons and detergent bottles are NOT acceptable sharps containers.**

**Free approved sharps containers are available at local pharmacies.**

This service is funded by the Lake County Waste Management Department for all County residents. For additional information call 707-262-1618

Sharps Disposal by mail at the following pharmacies

⇒ Postage paid shipping container

⇒ No prescription required



### **Lakeport**

#### **Northlake Pharmacy**

347 Lakeport Blvd.

707-263-1328

#### **Northlake Pharmacy**

Sutter Lakeside Hospital

5131 Hill Rd East

707-263-6192

#### **CVS Pharmacy**

949 11th St

707-262-0211

#### **K-Mart**

2019 So. Main St

707-263-9051

#### **Safeway**

1071 11th St

707-263-8779

### **Lucerne**

6244 Highway 20

707-274-6643

### **Hidden Valley**

#### **Coyote Valley Pharmacy**

18990 Coyote Valley Rd

707-987-8502

### **Kelseyville**

#### **Kelseyville Pharmacy**

3720 Main St

707-279-1560

### **Clearlake**

#### **Moran's Pharmacy**

15175 Lakeshore Dr.

707-994-6440

#### **Lake Pharmacy**

15230 Lakeshore Dr.

707-994-3141



## Drop-Off Sites for Used Oil Recycling and Used Oil Filters

### Did you know...

- Used oil doesn't wear out: it just gets dirty.
- It is illegal to spray motor oil on roads for dust control
- Used oil contains high levels of toxic heavy metals and halogens that can enter the watershed and contaminate soils through improper disposal.
- It is illegal to dispose of motor oil on the ground, in sewers, or in the trash.
- One gallon of oil can contaminate up to one million gallons of water.

#### **Clearlake**

O'Reilly Auto Parts  
14993 Lakeshore Dr.  
707-995-9295

South Lake Recycling  
16015 Davis St  
707-994-8614

#### **Lucerne**

North shore Fire Protection  
6257 7th Ave  
707-274-3100

#### **Lakeport**

Lake County Waste Solutions  
230 Soda Bay Rd  
707-263-7683

O'Reilly Auto Parts  
2011 S. Main St  
707-263-9633

Hillside Honda  
460 S Main St  
707-263-9000

#### **Middletown**

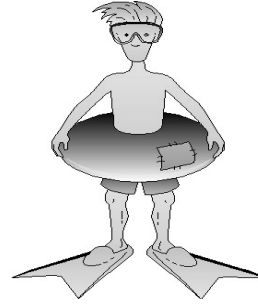
South Lake Fire Dept.  
21095 Hwy 175  
707-987-3089

#### **Kelseyville**

**Marine Oil**  
Bay shore Marine Service  
7723 Hwy 29  
707-279-1094

## Get Rid of your Spare Tire!

Residents of Lake County may dispose of up to 9 passenger tires (up to R19.5) during advertised Tire Amnesty Events at no charge (sponsored through grant funds from CalRecycle). Discounted fees apply for passenger tires over R19.5. The Amnesty program is not for commercial, heavy duty, farm, or heavy equipment tires.



Customers will be asked to show proof of Lake County residency and sign a form showing numbers and origin of tires. No commercial tire, auto repair or salvage businesses.



### **Tires can be disposed of any time during regular operating hours for a small fee at:**

Lake County Waste Solutions  
230 Soda Bay Rd  
Lakeport, CA 95453  
Mon-Sat 7:30-4:00 pm

South lake Recycling  
16015 Davis Ave  
Clearlake, CA 95422  
Mon-Sat 7:30-3:00pm  
Sunday 8:00-3:00pm

**It's the Law!** California law prohibits anyone from hauling more than 9 tires without a State permit which can be obtained for free at the Lake County Environmental Health Department. There may be exemptions for some clean up projects. Contact the Public Services Department for more information at 707-262-1618 or Lake County Environmental Health 707-263-1164





**COMPOST**– Composting keeps organic materials out of our landfills, making additional space available for trash, and turns organic materials into useful products. The composting process decomposes organic wastes into soil amendment that will improve soil structure, texture, and aeration, as well as increasing the soil’s water-holding capacity. Com-

post is available for sale at Quackenbush Mtn. Resource Recovery and Compost Facility or Lake County Waste Solutions.

**HOW TO MAKE COMPOST:** In a wire, wood, or plastic bin (with air holes), place leaves, yard trimming, vegetable scraps, coffee grounds, cold wood ash, etc. Alternate green and brown layers, keeping food scraps well covered in the pile. Keep pile moist, but not soggy. It is done when it is dark and crumbly. For more recipes and information on composting tips you can visit: [www.calrecycle.ca.gov/organics/HomeCompost](http://www.calrecycle.ca.gov/organics/HomeCompost)

## VERMIPOSTING

### Things to Compost:

- leaves
- grass clippings
- pruning’s
- flowers
- wood ash
- sawdust
- vegetable trimmings
- coffee grounds



### Things NOT to Compost:

- bones
- dog & cat feces
- Un-chopped wood
- Plastics
- meat, fish, poultry
- diseased plants
- animal scraps
- dairy products

**“VERMI THE WORM”**

# **ALTERNATIVES TO BURNING YARD AND WOOD WASTE**



- 1. CURBSIDE SERVICE:** there is no additional charge for the 96-gallon green waste or 96-gallon recycling carts when you subscribe for residential curbside service. Monthly rates (as low as \$12.00) are based on the size of your refuse container. For more information, call your hauler. Call the Lake Quality Air Management District for burn regulations.

**NOTE:** No poison oak, berry vines, cactus, palm fronds, or dirt

- 2. REDUCED SELF-HAUL RATES -**  
For more information about fees for clean wood (not treated or painted) and green waste.

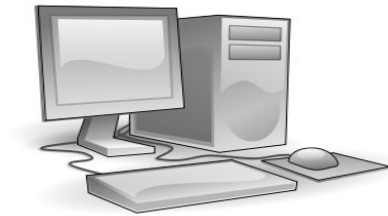


- 3. Deliver to:**

|  |  |  |
|--|--|--|
| <p>Lake County Waste Solutions<br/>Monday-Saturday<br/>7:30 a.m. -4:00 p.m.<br/>230 Soda Bay Rd<br/>Lakeport<br/><br/>707-263-7682<br/>707-234-6400<br/>888-718-4888</p> | <p>South Lake Refuse &amp; Recycling<br/>Open Daily<br/>7:30a.m. -3:00 p.m.<br/>16015 Davis St.<br/>Clearlake<br/>Located at the entrance to the Eastlake Landfill<br/>707-994-8613<br/>707-994-8614</p> | <p>Quakenbush Mtn. Resource Recovery &amp; Compost Facility<br/>Monday-Saturday<br/>7:30 A.M. to 3:00 P.M.<br/>Located behind the Eastlake Landfill<br/>(707) 995-0104</p> |
|--|--|--|

## E-Cycle & E-Waste Recycling

Did you know that when you purchase electronics you are charged a fee that allows you to recycle it for free? So why not?



Recycle your old electronics at these convenient locations:

### Lake County Waste Solutions

230 Soda Bay Rd  
Lakeport, CA  
707-234-6400

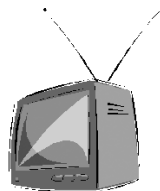


### Southlake Refuse and Recycling

16015 Davis Ave  
Clearlake, CA  
707-994-8613



Each year in California hundreds of thousands of computers, monitors, copiers, fax machines, printers, televisions, and other electronic items become "obsolete" in the eyes of consumers. Rapid advances in technology and an expanding demand for new features accelerate the generation of "old" electronic equipment ("e-waste"). The result is a growing challenge for businesses, residents, and local governments as they search for ways to reuse, recycle, or properly dispose of this equipment.





## Take Advantage of Lake County's Bulky Item Collection Program

You **MUST** call your hauler in advance to schedule a pick-up

Available in the unincorporated areas of Lake County for residential customers of  
South Lake Refuse and Recycling 707-994-8613 or Lake County Waste Solutions– 707-234-6400

There are no transportation fees; Maximum of 2 items per year. Large appliances incur a \$10  
handling fee.

Clearlake, and Lakeport residents call your hauler to schedule a pick-up. Fees may apply

### No Fee for these items:

Barbeque

Furniture

Plumbing fixture

Bed frame

Household electronics

Recliner

Bicycle

Large toys

Sporting equipment

Box spring

Lawn mower

Television

Carpet & padding

Mattress

Vacuum Cleaner

Computer

Microwave oven

Wheelbarrow

Couch

Printer

Window



**NOTE: The homeowner is responsible for all  
materials set out at the curb regardless of  
who set them there.**

### This program is NOT for items that:

- fit in your trash can, (e-waste cannot go in trash can)
- can be recycled, or
- can be donated to a thrift store,
- are hazardous materials, concrete, dirt, tree stumps

### \$10 handling fee for large appli- ances:

Air conditioner

Dishwasher

Dryer

Refrigerator or freezer

Stove or oven

Washing machine

Water heater



**FOUR TIRES (ONLY PASSENGER  
VEHICLE OR LIGHT TRUCK)**

## Alphabetical Index of Materials

### - A -

**AEROSOL CANS**— If the container is empty and contents were nontoxic, recycle curbside in your blue cart or drop off at recycling . If contents were toxic, and container is not empty take to the next hazardous waste drop off event (see page 7&8) for free disposal.



**ALUMINUM CANS**— Recycle curbside in your blue cart or take to a buy back center to receive money back.

**AMMUNITION**— Can be taken to the Lake County Sherriff's office with an appointment, call 707-262-4200 to schedule for drop off.

**ANIMALS, DEAD** - On public county roads, call local hauler for pick up. If on your property , take to Animal Control @ 4949 Helbush Lakeport 707-263-0278.

**ANTIFREEZE**- Some oil collection sites accept antifreeze (LCWS Lake County Waste Solutions, 5gal a day per customer), or you can it take to the next hazardous waste event for free drop off (see page 7&8).

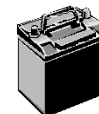
**APPLIANCES** - Call your Residential curbside customers hauler to schedule a “Bulky Item Pickup” for large appliances or drop off at their recycling center. Proof of residency is required. \$10 fee for a major appliance ( refrigerator, washer, dryer, dishwasher) Check to see if your item can be recycled as scrap metal.

Large & Small appliances delivered to recycling yards are free in most cases (toaster, coffee pot, etc.).

### **ASBESTOS (presumed asbestos-containing materials)**

Examples: Friable asbestos-containing material: Pipe lagging, boiler insulation, fire retardant material on steel work, sprayed insulation. Non-friable asbestos containing material: Asbestos cement sheet, asbestos cement molded products, bitumen-based water proofing, vinyl floor tiles.

Call Public Services for more information- 707-262-1618 or the East Lake Landfill 707-994-5888



**ASPHALT & ASPHALT SHINGLES**—See construction/demolition

## **-B-**

**BATTERIES**— All batteries are considered hazardous materials and cannot be thrown into the garbage. Drop off free at recycling center or take to hazardous waste event for free disposal (see page 7&8).

**AUTOMOTIVE BATTERIES** –Drop off at most recycling centers or auto parts store.

**HOUSEHOLD BATTERIES/CELL PHONE BATTERIES**– Drop off at recycling center or a hazardous waste event (see page 7&8).

**BICYCLES** - If they are still usable consider donating to a thrift store or post on free cycle.

**FRAMES**– Recyclable as scrap metal at recycling center

**TIRES**– Take to recycling center for a small fee or ask if an amnesty event is going (see page 12).



**SEAT**— Can be disposed in trash.

**BOOKS**-If they are re-usable, donate them to schools, library county jail, or any thrift store. Contact used bookstores for possible buy-back or store credit. Paperback books are recyclable curbside in your blue cart or drop off free at recycling center. Covers on hardcover books must be removed and disposed of with trash.

**BUILDING MATERIALS**—See construction and demolition

**BUTANE LIGHTERS- (BIC, DISPOSABLE, ETC)** -Take to hazardous waste event (see page 7&8).

**BUTANE CONTAINERS**- Take to hazardous waste event (see page 7&8).

## **-C-**

**CAR PARTS** - Many car parts are recyclable as scrap metal for buy-back. Or at little or no charge (metal or scrap). All fluids must be removed and disposed of properly.

**CARDBOARD**— Recycle curbside in your blue cart or drop-off free at recycling center. Professional moving boxes that are flattened and in good shape may be offered on free cycle. Dispose of waxed cardboard with refuse as it is not recyclable

**CARPETING AND CARPET PAD**-Can be disposed of at lake county waste solutions or the Eastlake landfill, or in your trash can. If it does not fit in the can, call for bulky item pick-up service in the unincorporated areas. Fees charged.

**CATALOGS** —Recyclable curbside or drop-off at recycling center.

**CELL PHONES**-Cell phones contain toxic metals that cannot go to the landfill, so they cannot be thrown away in your trash. All cell phone stores are now required to accept used phones for recycling. Free drop off at the recycling center.

**CERAMICS**— See construction and demolition. Dispose of as garbage.



**CEREAL BOXES**-Remove plastic inner bag, boxes are recyclable curbside or drop off at recycling center.

**CHRISTMAS TREES**-Unflocked and clean trees can be cut and placed inside your green bin curbside (lid must close). Call your hauler for special residential pickup and drop off information if too large to fit in can.

**CLOTHING**— Donate clothes in good shape to thrift stores or offer on free cycle.

**COMPUTERS**— Includes the CPU, keyboard, monitor, and mouse. No charge to drop-off at recycling center (see pg. 15) or call your hauler to schedule a “bulky item pick-up” (see pg. 16).

**CONCRETE**— See CONSTRUCTION AND DEMOLITION

**CONSTRUCTION AND DEMOLITION**— If materials are in good working order, consider donating to Habitat for Humanity. Fees will be charged at all disposal sites listed below:

**Eastlake landfill**— 16015 Davis St., Clearlake 707-994-5888

Accepted: non-asbestos-containing materials, non-metal pipe, flooring, dirt, asphalt, treated or painted wood, roofing, concrete. Excess concrete will result in a recycling surcharge— or you can recycle at Quackenbush Mt. (see below) or lake county waste solutions (see below). Mobile homes and trailers by appointment only.

**Lake County Waste Solutions-** 230 Soda Bay Rd., Lakeport 707-234-6400  
1-888-718-4888.

Accepted: mixed or separated construction and debris, clean landscaping materials, asphalt shingles, tar and rock roofing, dry wall, scrap metal, concrete, brick, asphalt, and porcelain (toilets and sinks).

**Quakenbush Mtn. Resource Recovery & Compost Facility-**16520 Davis St., Clearlake 707-995-0104

Accepted: clean construction wood, clean concrete, clean asphalt, and clean dirt

**COPY MACHINES**—See Electronics

**COUCHES**— See Furniture



**-D-**

**DETERGENT CONTAINERS**— Cardboard or plastic are recyclable curbside or drop-off at recycling center.

**DISHES-** Not Recyclable. If usable donate to a thrift store or shelter. If not usable dispose of in trash.



**-E-**

**ELECTRONICS**— Electronic products such as computers, printers, copy machines, fax machines, stereos, DVD players, VCR's, and answering machines are accepted for no charge at South lake Refuse & Recycling and Lake County Waste Solutions.

**EXPLOSIVES**— Make appointment to drop-off at sheriff's department, 707-262-4200.

**-F-**

**FIRE EXTINGUISHERS**— Hazardous Waste. Take to free hazardous waste drop-off event (see pg. 7&8)

**FLEA POWDER**—Hazardous Waste. Take to free hazardous waste drop-off event (see pg. 7&8)



**Fluorescent Light Tubes & Bulbs** - Hazardous Waste. Take to a free hazardous waste drop-off event for residents (see pg. 7&8). For large quantities there is a small fee and you must make an appointment.

**-G-**

**GASOLINE**— Hazardous waste. Take to Hazardous Waste event (see pg. 7/8).

**GLASS**— Beverage containers marked CRV or California redemption value can be redeemed for money at buy-back centers, placed in curbside bins (please remove lids) , or dropped off at a recycling center. Food jars and bottles may be placed in curbside bins without the lids. Window glass is not recyclable and should be disposed of as garbage

**GLASSWARE**— If reusable, donate to thrift store or offer on free cycle. If not recyclable, dispose of as garbage

**GREEN WASTE**— No poison oak, berry vines, cactus, or palm fronds—they must be disposed of as garbage or taken to landfill. Yard trimmings can be placed in green curbside bin. For more information on home composting, you can go to [www.calrecycle.ca.gov](http://www.calrecycle.ca.gov). Organics green waste can also be dropped off at Lake County Waste Solutions, Southlake Refuse and Recycling Center, or Quakenbush. Fees charged

**-H-**

**HAIR DYE**— Take to a hazardous waste event (see pg. 7&8). If completely dry can be disposed of in the trash

**HERBICIDES**— Take to a hazardous waste event (see pg. 7&8).

**HOSES**— If reusable, take to a thrift store. If not reusable dispose of in trash.

**-I-**

**INSECTICIDES**— Hazardous Waste. Save and take to an hazardous waste drop-off event for free.

**-J-**

**JUICE BOXES**— Juice, Soy milk, etc., can be rinsed and recycled curbside or at a recycling drop-off center.



**-K-**

**KEROSENE**— Hazardous Waste. Take to Hazardous Waste drop-off event (see pg. 7&8).

**-L-**

**LAWNMOWERS**— Deliver to recycling drop-off center after fluids are drained and properly disposed of at a hazardous waste (HHW) drop-off event (see pg. 7&8). Recycle as scrap metal at no charge.



**-M-**

**MAGAZINES**— Recycle curbside or at recycling drop-off center.

**MATTRESSES**— Deliver to Eastlake Landfill or Lake County Waste Solutions for a fee or you can schedule a bulky item pickup with your garbage service (see pg. 16).

**MEDICAL SUPPLIES OR EQUIPMENT**— If equipment is reusable, donate to a thrift store or offer on free cycle. Syringes cannot be disposed of in garbage or basic recycling (see how to dispose of your home generated sharps responsibly for free on page 9).

**MEDICATIONS**— Prescription and over the counter medications can be taken to hazardous waste drop-off events (see pg. 7&8) as long as they are taken in a clear plastic bag (mixed is fine, and bottles and labels are not needed for disposal purposes).



**METAL CANS**— Including food (soup, tuna, pet food, etc.) are recyclable at curbside or at a recycling drop-off center. Please rinse, and clean. Labels are ok to still be affixed.

**METAL (SCRAP)**- Most non-ferrous and ferrous metals are eligible for buy back. Vehicles are accepted with junk slip but all tires should be removed. There will be a fee for any tires that have not been removed from any vehicle or piece of equipment. All fluids should be drained and disposed of before bringing to scrap. For detailed information on scrap metal services in the county you can call 707-262-1618. Other metals such as bed frames, shelving, car parts with the fluids drained, bike frames, tools, wood stoves, hardware, chain link fencing, galvanized pipe, iron pots and pans etc. can be dropped off at Southlake Refuse and Recycling Center or Lake County Waste Solutions. Iron or steel cable, chain or barbed wire must be disposed of in trash.

**MILK CARTONS**— Rinse and recycle curbside or at recycling drop-off center.

**MIRRORS**— Not recyclable. If reusable, donate to a thrift store. Otherwise throw in the trash.

**MOTH BALLS & FLAKES**— Hazardous Waste. Save and take to a hazardous waste drop-off event (see pg. 7&8).

**MOTOR OIL, USED and NEW-**

See page 11 for drop-off locations and additional information. For no charge a redemption value may be available at some locations if the oil is uncontaminated. Up to 5 gallons a day is accepted and oil filters are accepted at the same sites.



**-N-**

**NAIL POLISH AND POLISH REMOVER**— Hazardous Waste. Please save and take to the next hazardous waste drop-off event (see page 7&8) unless it is completely dry then you can dispose of in trash.



**NURSERY POTS, (PLASTIC)**— Accepted for reuse at most nurseries or recycle curbside or at recycling drop-off site.

**-O-**

**OIL, USED**— See Motor Oil

**OIL FILTERS, USED**— Accepted at no charge (see pg. 11 for drop off areas). See Motor Oil.

**-P-**

**PAINT**— Take to Lake County Waste Solutions or Southlake Refuse and Recycling if the paint is latex or water based for free drop-off. If cans are completely dry you can dispose of in the garbage. Recycled paint is available for a small fee on a first come first serve basis at both recycling centers. (See page 6 on Paint care sites to see what is acceptable for free disposal).



## **PALLETS— (SEE WOOD WASTE)**

**PAPER—** Recycle curbside or at a recycling center (includes cardboard, newspaper, junk mail, magazines, office paper, etc. )

**PESTICIDES—** Hazardous waste. Save and take to a Hazardous Waste event (see pg. 7&8).

**PET FOOD BAGS—**with plastic lining, not recyclable. Reuse or dispose of in garbage. Without lining please recycle.

**PHOTOGRAPHY CHEMICALS—** Hazardous waste. Take to a hazardous waste event (see pg. 7&8).

**PIZZA BOXES—** Not recyclable if contaminated with food or grease. Dispose of with garbage

## **PLASTICS—**

**BEVERAGE CONTAINERS:** Recycle curbside or take to a buy back center. Lids are not recyclable. Dispose of in the trash.

**CLEAN FOOD CONTAINERS:** Recycle curbside

**GROCERY BAGS AND FILM PLASTICS:** In Lakeport and Clearlake, dispose of in garbage in other areas secure bags and place in recycling bin.

**RIGID/HARD PLASTICS:** Clean buckets and nursery pots can be recycled curbside. Larger items that will not fit in curbside bin can be taken to recycling center ( kiddie pools, crates, resin lawn chairs, storage containers, big wheels).

**POISONS—**Hazardous waste. Rat, mouse, gopher, snail, and slug poisons. Take to a hazardous waste event (see pg. 7&8).

**POLISH—** Hazardous waste. Car, furniture, nail, shoe, silver, copper, floor etc. Can be taken to a hazardous waste event (see pg. 7&8). If empty or dry they can be disposed of with garbage.

**PRESCRIPTIONS**— Hazardous waste. Do not dispose of in garbage, sink, or toilet. Take to hazardous waste event in a clear plastic bag. Empty prescription containers can be returned to most pharmacies (see pg. 7&8).



**PROPANE TANKS**— 5 gallons or smaller, accepted at hazardous waste sites. Empty tanks without lids can be taken to lake county waste solutions.

**PVC (POLY VINYL CHLORIDE)**- Not recyclable. Dispose of with trash. See construction and demolition.

**-R-**

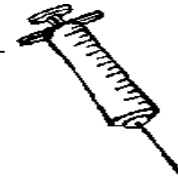
**RESIN (PLASTIC) CHAIRS**—If reusable, take to a thrift store or offer on free cycle. If it's broken and can fit, you can place in your curbside recycling cart.



**-S-**

**SHAMPOO BOTTLES**— Recycle curbside or take to recycling/drop-off center. Rinse bottle and dispose of lid in trash.

**SHARPS/SYRINGES**— Needles and syringes are hazardous waste. Dispose of in appropriate containers, (see pg. 9 & 10 for appropriate containers and free disposal information options that are available in Lake County).



**SHOE BOXES**— If cardboard, flatten and recycle curbside or drop off at recycling center.

**SMOKE DETECTORS**— Double wrap in plastic and dispose of with garbage after removing batteries.

**STRAWS**— Not recyclable. Dispose of with trash.

**STYROFOAM**— Dispose of as refuse in plastic bag to prevent littering.

## **-T-**

**TARPS**— Not recyclable. If reusable take to thrift store or offer on free cycle. If not reusable dispose of with garbage.

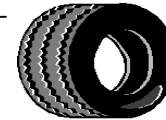
**TELEPHONES**— See Electronics

**TELEPHONE BOOKS**— Recycle Curbside or at recycling center.

**TELEVISIONS**— Monitors and televisions are banned from landfill. Free drop-off at Southlake Refuse and Recycling and Lake County Waste Solutions or call your hauler for a bulky item pick-up (see pg. 16).

**THERMOMETERS**— Hazardous waste. Take to a hazardous waste drop-off event (Pg. 7&8).

**TIRES**-Banned from landfills. Drop-off at Southlake Refuse and Recycling or Lake County Waste Solutions for a small fee. Watch for tire amnesty events and programs to allow for free drop-off of tires (see pg. 12) some restrictions apply.



**TISSUES**-Not recyclable. Dispose of in garbage

**TISSUE PAPER**-Recycle curbside or at recycling center if paper. If foil then dispose of in garbage.

**TONER CARTRIDGES**— Mail at no charge to recycling centers with postage paid envelopes at most post offices.

**TOYS**— If reusable, take to thrift store or offer on free-cycle. Refer to plastics if not reusable

**TURPENTINE**—Hazardous waste. Take to hazardous waste drop-off event (Pg. 7&8).

## **-V-**

**VCR's** - See Electronics

**VIDEOS**— If reusable donate, if not reusable then throw in garbage.

**-W-**

**WATER BOTTLES**— Recyclable curbside or at recycling centers or may be redeemed for California redemption value (CRV) at buy back centers, see pg. 5. Caps must be disposed of in the garbage.



**WEED KILLER**— Hazardous waste. Take to hazardous waste event (see pg. 7&8).

**WINDOW GLASS**— Not recyclable. Throw away in garbage

**WOOD WASTE**— Clean Painted & treated wood must be treated like garbage. Don't burn. Clean wood (nails okay), including branches, small pieces of unpainted and untreated lumber can be recycled curbside in green waste at no additional charge with curbside service or deliver to Lake County Waste Solutions, Quackenbush Resource Recovery and Compost Facility, or Southlake Refuse and Recycling for a small fee.



## The Evolution of the Waste Can



[illegible]

[illegible]

## This image shows a full page of blank white paper with horizontal ruling lines. The lines are evenly spaced and run across the width of the page, providing a template for writing or drawing. There are no margins, text, or other markings present.



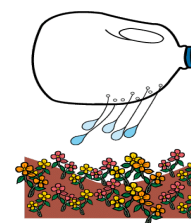
When you recycle, less trash goes to the landfill, leaving us with more land for houses, schools, parks...and toy stores! Glass, aluminum cans, plastic bottles, paper and yard waste are some of the most common items that are recycled. Some cities provide special recycling bins to put your recyclables in; most cities have recycling centers where you can return your recyclables for money.

|             |              |         |
|-------------|--------------|---------|
| ENVIRONMENT | RECYCLE REX  |         |
| RENEWABLE   | CONSERVATION |         |
| BAUXITE ORE | BUY RECYCLED |         |
| BOTTLE      | STEEL        | GLASS   |
| LANDFILL    | REDUCE       | REUSE   |
| EARTH       | RESOURCES    | PLASTIC |
| NATURE      | ALUMINUM     | GREEN   |
| MINERALS    | GARBAGE      | ENERGY  |
| SAVE        | TREES        | LITTER  |
| WASTE       | RECYCLE      | PET     |
| PAPER       | SAND         | OIL     |

## Kids Recycling

GELDENVIRONMENTOMRX  
 JLKSLMSHRTSBTSLUFVP  
 VFAZTNJPENJVLPNGLT  
 PLASTICVCQGITIKATOB  
 SDIROKAUYVONMDNROJU  
 WEVTBSWTCSPUWDGBSPY  
 PINHTUMQLNLYFOSAWRR  
 ANTEOEYIEASIXQPGHEE  
 PONQRBKRTLUTREESNC  
 EIMULGSPELJESLIGJEY  
 RTTWQGYEXCBSTWLEMWC  
 JAQ SXPLZWPYRPAJSKAL  
 NVKPRESOURCE SRVUVBE  
 HREDUCEJTYVSDABEWLD  
 BEWVDSVWQSHQLQARCEG  
 YSBAUXITEOREGRPYLRL  
 CNGPSWNJGOWNTSCWEJS  
 EOQTVTPIJSZHPEVETEQ  
 RCSMINERALSVRDNASPG

## Fun Recycling Ideas!





## Fun ways to get kids reducing, reusing and recycling:

1. Make recycling an adventure by visiting a recycling center and a landfill! A great way to teach kids about recycling is to let them see first-hand what goes on behind the scenes. A trip to a landfill teaches kids that when things go into the trash they don't just disappear. The enormous piles of trash will make a clear case for why recycling is so important. And, a trip to the recycling center is an exciting way for kids to see what happens to the materials they have been sorting and how they are turned into new products.
2. Be a good example—children will follow your lead, so start by setting an example and making an effort to recycle consistently. Explain to your kids what you're doing when you throw plastic into the recycling bin instead of the trashcan. Show them how to look for the recycling number on plastic packaging and give them the opportunity to put recyclables into the bin themselves.
3. For younger kids, the green and blue recycle bins make an easy, fun lesson in colors and materials. Even when they are as young as two, they can play a game matching household items with the right bin color. Make piles and have your child try to match the material with the proper bin.
4. Online at National Geographic Kids, your children can help Gus the Gorilla speed clean the parks by sorting trash. Older children can play Recycle City on the U.S. Environmental Agency's website. This site explains the roles that various places have in recycling, and it provides activities that get children thinking critically. In the Dumptown Game, your child becomes the city manager and has to figure out how to encourage residents to recycle and reduce waste.



Lake County Public Services is working  
with business partners and other agencies  
to create a better environment for the  
residents and guests of our county!

We hope you find this recycling guide useful and if you  
have any questions please call or stop by:

Lake County Public Services  
333 Second St  
Lakeport CA 95453  
707-262-1618

