



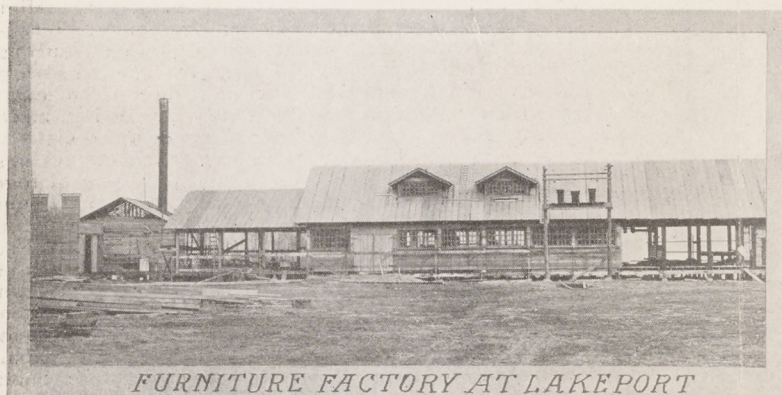
LAKEPORT CARNEGIE FREE LIBRARY



COUNTY COURT HOUSE AT LAKEPORT



SCENE AT LAKEPORT AUTO PARK



FURNITURE FACTORY AT LAKEPORT

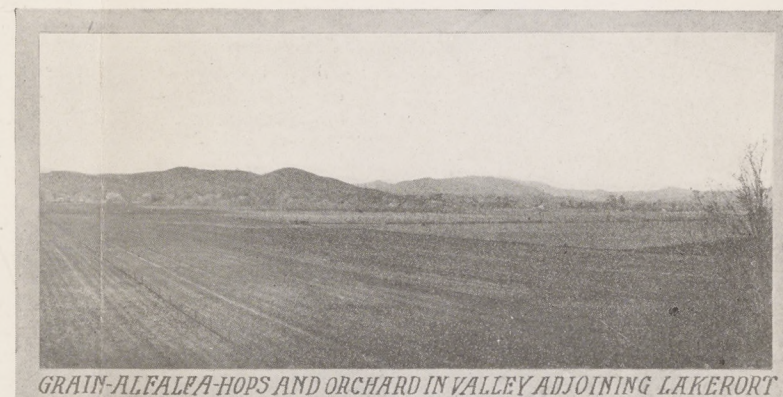
LAKEPORT

(ON CLEAR LAKE)

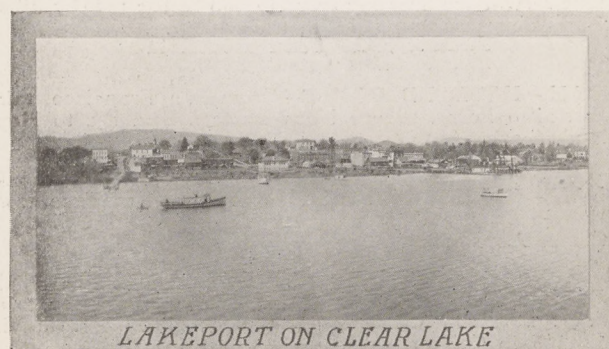
Lake County California

On State Highway

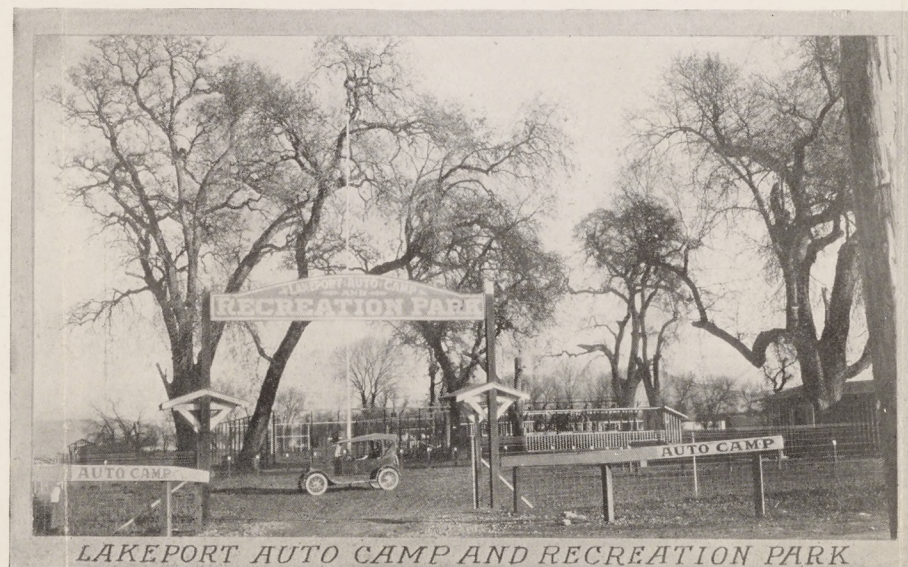
120 Miles from San Francisco Bay



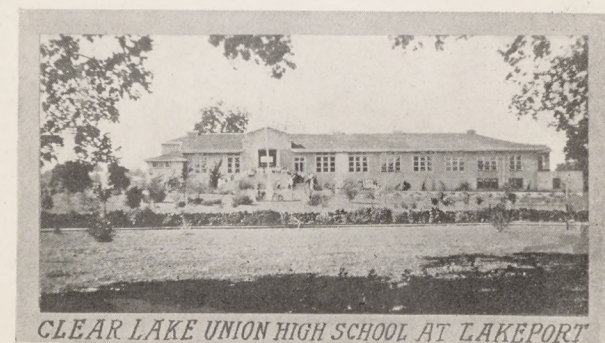
GRAIN-ALFALFA-HOPS AND ORCHARD IN VALLEY ADJOINING LAKEPORT



LAKEPORT ON CLEAR LAKE



LAKEPORT AUTO CAMP AND RECREATION PARK



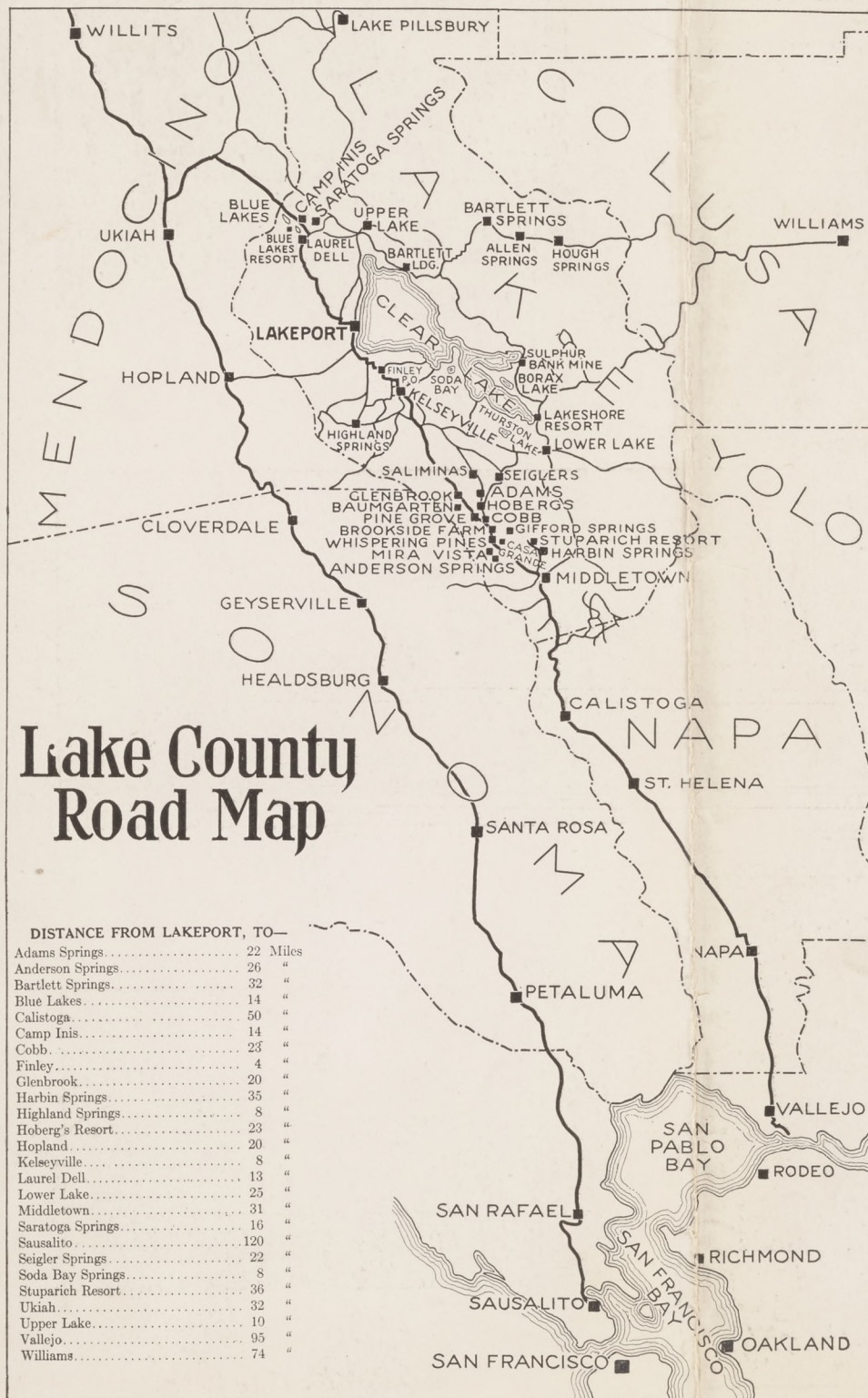
CLEAR LAKE UNION HIGH SCHOOL AT LAKEPORT

LAKEPORT

(ON CLEAR LAKE)

LAKE COUNTY

CALIFORNIA

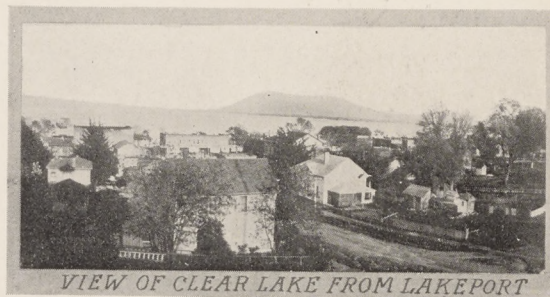


LAKEPORT

(ON CLEAR LAKE)

LAKE COUNTY

CALIFORNIA



LAKEPORT

County Seat of Lake County; population is 1,200; touring center for

pleasure seekers and headquarters for huntsmen and fishermen; ideally located in the center of Lake County's many famous pleasure resorts and mineral springs; surrounded by large fertile valleys abundantly producing the famous Lake County Bartlett pears, prunes, walnuts, apples, almonds, peaches and other fruits; hops, grain, alfalfa, string beans, dairying and stock raising; is rapidly expanding and coming to be known as one of the most attractive cities in California. It is situated on the State Highway about five hours drive from San Francisco by auto.

Imbued with a spirit of progress and "pep" characteristic of the West, Lakeport people are happy, ambitious and prosperous.

A delightful home and a religious life is evident, the many churches receiving strong support and good attendance. The activities of fraternal organizations and women's clubs cultivating good-fellowship and the worth while achievements of a wide-awake Chamber of Commerce are all manifested in a genial social atmosphere that is prevalent everywhere.

As to the accommodations of life, one finds nearly all of the advantages of an up-to-date city; modern electric lighting facilities; municipal water and sewer systems; cement sidewalks; a well organized fire department; sound banks; good hotel and restaurants; movie theatre; free public Carnegie Library; new modern Union Grammar and High Schools; many auto stages connecting with nearest railroad centers and the numerous noted pleasure resorts and springs of the County; fine stores well stocked with goods of every description, luxuries as well as the necessities of life, and a trade that pours in from the flourishing country districts greatly augmented by an ever-increasing tourist travel.

With an elevation of 1,325 feet, the total absence of fogs, the calm coolness of the summer months and the mild temperature of winter, make the climate one that is enticing and enjoyed with solid comfort every month of the year.

Within her corporate limits located on the shores of that grand old Clear Lake (largest in California), Lakeport maintains one of the finest auto camps and recreation parks, consisting of ten acres of splendidly shaded level land, to be found in California. It is modernly equipped throughout; electric lighted; telephone service; kitchenette; ice cream and soft drink parlor; shower baths; sanitary toilets; public garage; day and night police patrol; children's play grounds; baseball field; tennis court; open air dancing pavilion; row boats; launches; bathing, swimming and fishing,—in fact, everything for the comfort and enjoyment of camping tourists.

Black Bass and cat fish are abundant in Clear Lake and the season open the year round; many wild ducks are on the lake in winter; deer hunting is good in the nearby hills; quail and doves are plentiful in the valleys.

HOW TO GET THERE

BY RAIL—HOPLAND ROUTE—From San Francisco, take Sausalito Ferry, thence Northwestern Pac. Ry. to Hopland, thence Auto Stage.

—OR—

BY RAIL—CALISTOGA ROUTE—From San Francisco, take Vallejo Boat to Vallejo, thence Electric Ry. to Calistoga, thence Auto Stage.

—OR—

BY RAIL—CALISTOGA ROUTE—From San Francisco, take S. P. Ferry to Oakland Mole, thence S. P. train via Vallejo to Calistoga, thence Auto Stage.

BY PRIVATE AUTOMOBILE—See Map.

For Further Information, Address

Lakeport Chamber of Commerce

LAKEPORT, LAKE COUNTY, CALIFORNIA