





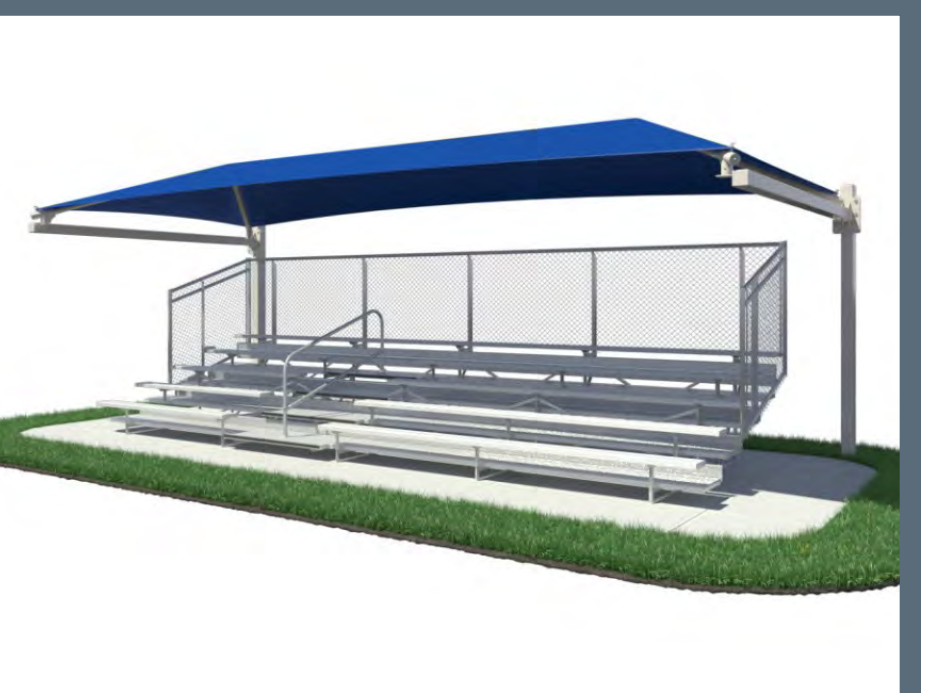
**EXPANDED COURTS**



**PLAYER BENCHES**



**SPECTATOR BLEACHERS**



**SHOWERS**



**RESTROOMS & CONCESSIONS**

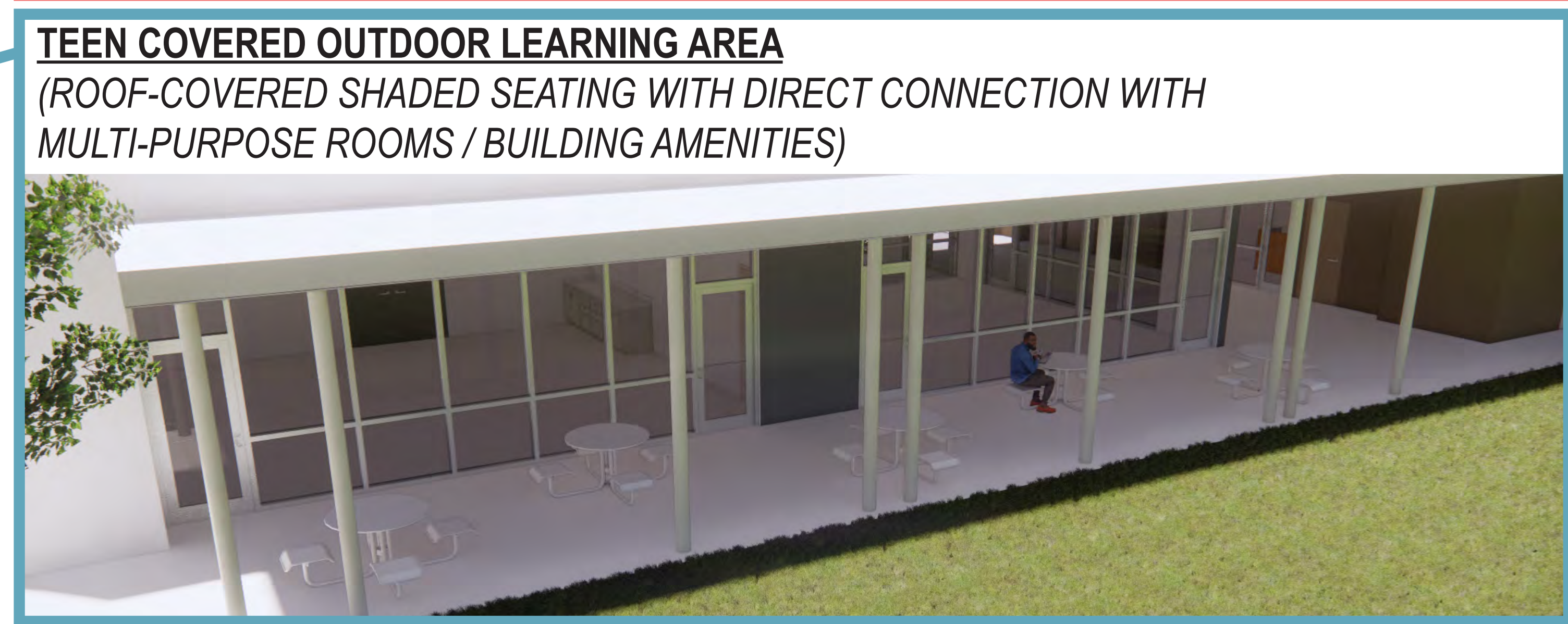






**TEEN PROGRAM:**  
 THE TEEN-FOCUSED RECREATION BUILDING ALSO ACTS AS THE CENTRAL HUB TO THE ADJACENT PARK ACTIVITY PROGRAMS:

- SKATE PARK
- BASKETBALL
- PICKELBALL
- VOLLEYBALL
- TRAILS







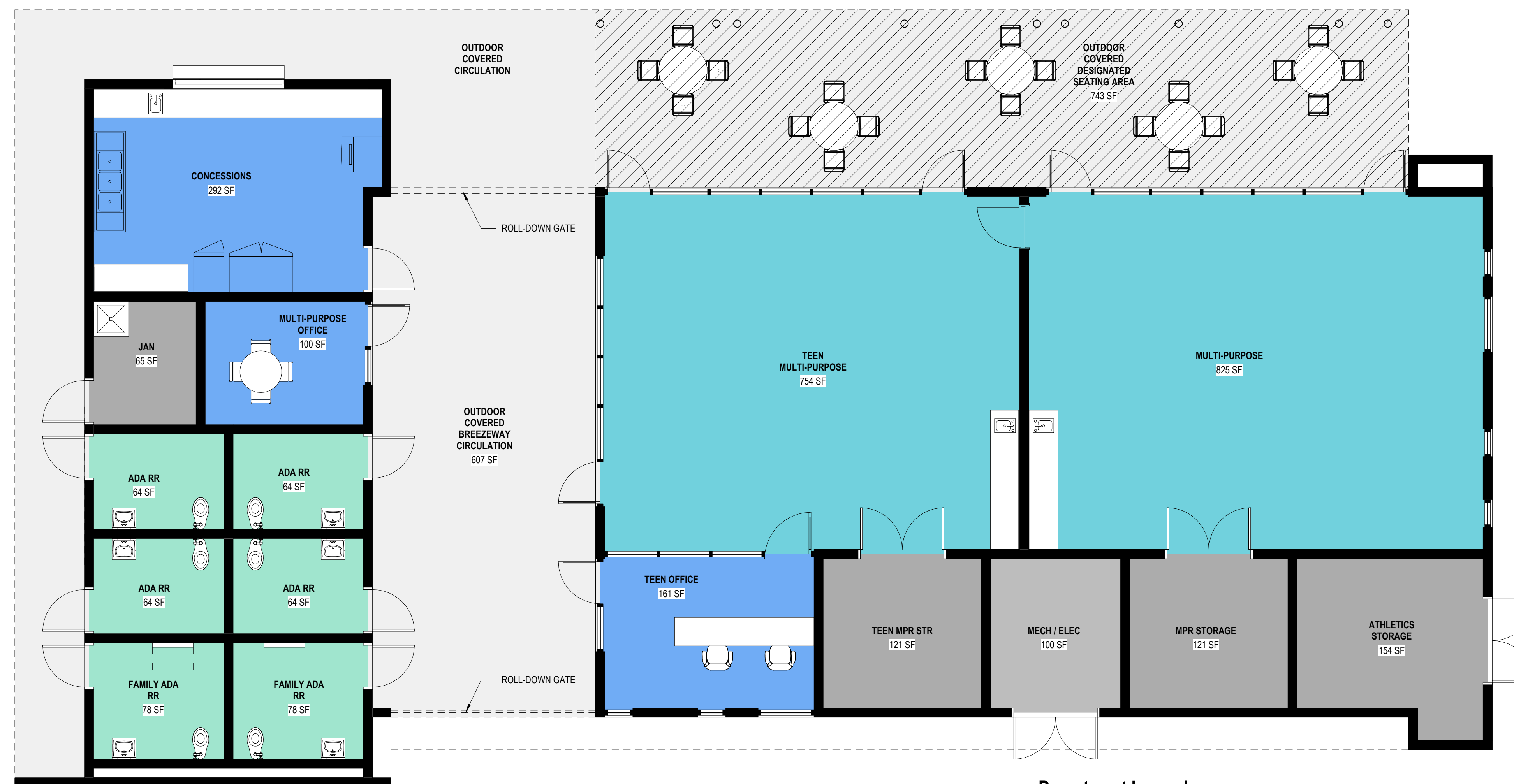
EXISTING 4 PULL-IN PARKING SPOTS ALONG 5TH AVE

NEW 2 PARALLEL PARKING ALONG 5TH AVE

NEW 92 STALL PARKING LOT EXPANDED FOR INCREASED VOLLEYBALL COURTS CAPACITY

ACCESS TO PARK ACTIVITY FUNCTIONS  
ACCESS TO DOG PARK





INDOOR CONDITIONED SPACE: 3,508 SQ. FT.  
 OUTDOOR COVERED SPACE: 1,350 SQ. FT.  
 TOTAL OCCUPIABLE SPACE: 4,858 SQ. FT.

#### Department Legend

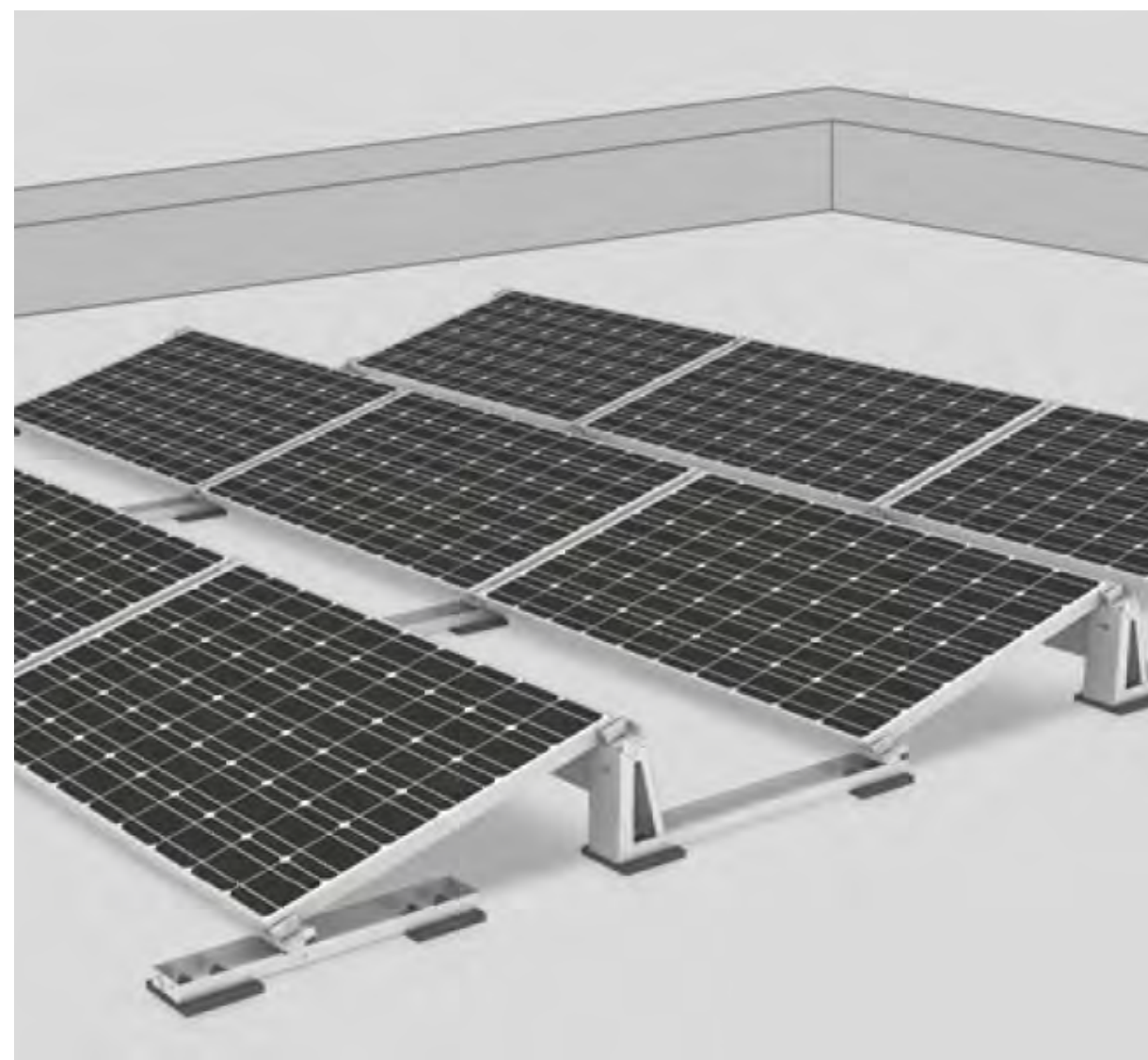
MEP  
 MULTI-PURPOSE  
 OUTDOOR SEATING  
 RESTROOM  
 STORAGE  
 WORK  
 DOUBLES AS TEEN OUTDOOR LEARNING AREA







**PHOTOVOLTAIC  
PANELS ON ROOF**



**ELECTRIC VEHICLE DUAL  
CHARGING STATION**



**LOCATIONS FOR FUTURE ELECTRIC  
VEHICLE CHARGING STATIONS**

