



301 East Main Street  
Lowell, Michigan 49331  
Phone (616) 897-8457  
Fax (616) 897-4085

CITY OF LOWELL  
DOWNTOWN DEVELOPMENT AUTHORITY  
THURSDAY, MARCH 7, 2019  
12 NOON  
AT  
LOWELL CITY HALL  
COUNCIL CHAMBERS  
SECOND FLOOR  
301 EAST MAIN STREET

1. CALL TO ORDER; ROLL CALL
2. APPROVAL OF THE AGENDA
3. APPROVAL MINUTES OF PREVIOUS MEETING(S)
  - a) October 11, 2018
  - b) January 10, 2019
4. TREASURER'S REPORT
5. PUBLIC COMMENTS FOR ITEMS NOT ON THE AGENDA
6. OLD BUSINESS
7. NEW BUSINESS
  - a) Riverwalk Sound System.
  - b) Riverside Street resurfacing.
  - c) Fiscal Year 2020 Budget.
  - d) DDA law changes.
8. REPORTS AND MEMBER COMMENTS
9. ADJOURNMENT

**OFFICIAL PROCEEDINGS  
OF THE  
DOWNTOWN DEVELOPMENT AUTHORITY  
OF THE  
CITY OF LOWELL  
THURSDAY, OCTOBER 11, 2018**

1. **CALL TO ORDER; ROLL CALL**

The Meeting was called to order at 12:00 p.m. by Chair Reagan.

Present: Boardmembers Cliff Yankovich, Rita Reister, Mike Larkin, Rick Seese, Dean Lonick, April McClure and Chair Jim Reagan.  
Absent: Boardmembers Brian Doyle and Mike Devore.  
Also Present: City Manager Mike Burns, City Clerk Susan Ullery, DPW Director Rich LaBombard, Chief of Police Steve Bukala, Andy Moore with William & Works.

2. **EXCUSE OF ABSENCES**

IT WAS MOVED BY LONICK and seconded by YANKOVICH to excuse the absence of Brian Doyle and Mike Devore.

YES: 7. NO: 0. ABSENT: 2. MOTION CARRIED.

3. **APPROVAL OF THE AGENDA**

IT WAS MOVED BY YANKOVICH and seconded by MCCLURE to approve the agenda as written.

YES: 7. NO: 0. ABSENT: 2. MOTION CARRIED.

4. **APPROVAL OF THE MINUTES**

IT WAS MOVED BY REISTER and seconded by LARKIN to approve the minutes of the September 06, 2018 meeting as written.

YES: 7. NO: 0. ABSENT: 2. MOTION CARRIED.

5. **TREASURER'S REPORT**

**DOWNTOWN DEVELOPMENT AUTHORITY FUND  
FINANCIAL STATEMENT  
October 8, 2018**

Beginning Balance:	\$273,118.62
Revenue:	
TIFA Revenue	\$458,273.08
PPT Reimbursement	
Total Revenues	\$731,391.70
Expenditures:	
Capital Outlay	

Salaries/FICA	\$12,723.95
Maintenance Supplies	\$13,259.50
Utilities	\$3,771.05
Misc. and Community Promotions	\$2,180.47
Accrued Wages	\$2,454.14
Administration	\$4,121.41
Accrued Payables	\$10,195.92

Transfer to General Fund

*Total Expenditures:* \$48,706.44

**Ending Balance** \$682,685.26

IT WAS MOVED BY LONICK and seconded by YANKOVICH to accept the Treasurer's Report as submitted.

YES: 7. NO: 0. ABSENT: 2. MOTION CARRIED.

6. **PUBLIC COMMENTS FOR ITEMS NOT ON THE AGENDA.**

There we no public comments.

7. **OLD BUSINESS**

a. **Downtown Master Plan.**

Andy Moore with William & Works spoke and City Manager Mike Burns stated that since receiving the walkability study report, they have been working on tying in many of those recommendations to the Master Plan. Moore presented his revisions to the master plan for DDA Councilmembers to review and then recommended to Council. Burns added that he recommends Council look at enhancing the rear side of downtown buildings as an action strategy and utilize the South River Walk as a very important piece to enhance the downtown (a splash pad if possible) should also be considered.

8. **NEW BUSINESS**

a. **Recreation Park Study.**

City Manager Mike Burns stated in this year's budget, funds were budgeted for a feasibility study of the future use of Recreation Park once the Kent County Youth Fair vacates to their new location. I reached out to our Consultant, Williams and Works, to submit a proposal to us for this study and to do this in phases. The first Phase would be for the background with City administration and other key representatives regarding the property. We would begin a community outreach phase where we can look at different options including a charrette. We would then take the information from those engagements and utilize toward designing a plan. After this, we would finalize the plan and take steps to begin implementation once the KCYF leaves. Total Project cost is \$10,000 without a design charrette and \$13,500 if we hold a design charrette. It may be the best option to hold one as an opportunity to seek a greater input.

IT WAS MOVED BY YANKOVICH and seconded by DEVORE to approve the Downtown Development Authority partner with William and Works to conduct a feasibility plan for the future use of Recreation Park not to exceed \$13,500.

YES: 8.0 NO: 0. ABSENT: 1. MOTION CARRIED.

Councilmember Cliff Yankovich left at 12:45.

b. Christmas Marketing.

Liz Baker with the Chamber of Commerce spoke regarding the Christmas in Lowell marketing funds and requested \$6,450 in sponsorship for the event.

IT WAS MOVED BY DEVORE and seconded by DOYLE to provide a sponsorship to the Lowell Area Chamber of Commerce at a cost not to exceed \$6,450 for the Christmas in Lowell marketing sponsorship.

YES: 7.0 NO: 0. ABSENT: 2. MOTION CARRIED.

c. Marketing.

Liz Baker with the Chamber of Commerce spoke regarding the annual marketing funds requests for the Chamber of Commerce, this year requesting \$40,000 in sponsorship. An increased amount was provided for marketing in the Fiscal Year 2019 budget.

IT WAS MOVED BY DEVORE and seconded by DOYLE to provide a sponsorship to the Lowell Area Chamber of Commerce at a cost not to exceed \$40,000 for their annual marketing.

YES: 7.0 NO: 0. ABSENT: 2. MOTION CARRIED.

9. REPORTS AND MEMBER COMMENTS

Board member Mike Larkin asked how MDOT deciphers the speed limits, bump outs, speed signs, etc. for different cities.

IT WAS MOVED BY DEVORE and seconded by REISTER to adjourn at 1:10 p.m.

YES: 7. NO: 0 ABSENT: 2. MOTION CARRIED.

Date:

APPROVED:

---

James E. Reagan, Chair

---

Susan Ullery, City Clerk

**OFFICIAL PROCEEDINGS  
OF THE  
DOWNTOWN DEVELOPMENT AUTHORITY  
OF THE  
CITY OF LOWELL  
THURSDAY, JANUARY 10, 2019**

1. **CALL TO ORDER; ROLL CALL**

The Meeting was called to order at 12:15 p.m. by Chair Reagan.

Present: Boardmembers April McClure and Chair Jim Reagan, Brian Doyle and Mike DeVore.  
Absent: Boardmember Rita Reister and Rick Seese.  
Also Present: City Manager Mike Burns, City Clerk Susan Ullery, Light & Power Manager Steve Donkersloot, Police Chief Steve Bukala, Eric Wakeman and Greg Canfield.

2. **EXCUSE OF ABSENCES.**

All conceded that the excuse of absence for Rita Reister and Rick Seese can be approved at the next meeting.

3. **APPROVAL OF THE AGENDA**

All conceded that the agenda can be approved at the next meeting.

4. **2019 MEETING DATES FOR DOWNTOWN DEVELOPMENT AUTHORITY.**

City Manager Michael Burns went over the 2019 Meeting Dates (as needed) and are as follows:

- January 9, 2019
- No February Meeting
- March 7, 2019
- April 11, 2019 Informational Meeting
- May 9, 2019
- June 6, 2019
- July 11, 2019
- August 8, 2019
- September 5, 2019
- October 10, 2019 Informational Meeting
- November 7, 2019
- December 5, 2019

All conceded to approve meeting dates at the next meeting.

5. **APPROVAL OF THE MINUTES**

All conceded that the minutes can be approved at the next meeting.

6. **TREASURER'S REPORT**

**DOWNTOWN DEVELOPMENT AUTHORITY FUND  
FINANCIAL STATEMENT**

Beginning Balance:		\$273,118.62
Revenue:		
TIFA Revenue		\$458,273.08
PPT Reimbursement		
Total Revenues		\$731,391.70
Expenditures:		
Capital Outlay		
Salaries		\$21,256.19
Maintenance Supplies		\$23,055.66
Utilities		\$8,570.45
Misc.	and	Community Promotions
\$53,596.16		
Accrued Wages		\$2,454.14
Administration		\$8,524.08
Accrued Payables		\$10,195.92
Transfer to General Fund		
Total Expenditures:		\$127,652.60
Ending Balance		\$604,334.73

There we no public comments.

a. Midwest Sculpture Initiative.

City Manager stated we are not going to be able to participate this year...we are too far down on the waiting list. There is a fall initiative that we may be able to participate in and he will check into that. We can discuss further next year at budget time but there may be some reservations for next year.

a. Decorative Fencing for Light and Power.

Lowell Light & Power Manager Steve Donkersloot spoke and stated that Lowell Light & Power (LL&P) in conjunction with Consumers Energy just completed a gas regulating station project and that equipment is

located on the south side of the Lowell Light & Powers office building. Consumer's requirements are an 8 foot fence with two entry points and no barbed wire around the regulating station. LL&P has obtained quotes for a chain-link privacy fence and it will be only a portion of the previous fenced in area that will be fenced. Esthetically and quality will be much better than previous. Donkersloot continued asking the DDA if they wanted a more decorative fence, the lowest quote from Grand Rapid Fence Company and with the choice of a more decorative fence, the DDA would have to cover the extra cost and that would be an additional \$5530.

All conceded to install a decorative black chain link fence at the next meeting.

b. Update on Unity School.

City Manager Michael Burns discussed at length the Unity School property and what the developers are looking at doing and explained the exchange of 7 feet of park property. Discussed several possible ideas. Board member Greg Canfield spoke and said the property south of high street on the river is extremely important to the Riverwalk and we need to make sure we are negotiating the best outcome when it comes to this property and our best bargaining position is now.

10. REPORTS AND MEMBER COMMENTS

Chair Jim Reagan wanted to introduce Eric Wakeman who will be joining the DDA Board and also stated that Mike Sprenger and Julie DeVoe will also be joining the DDA Board once they are approved at the next meeting which is set for March 7, 2019.

IT WAS MOVED BY DOYLE and seconded by DEVORE to adjourn at 12:50 p.m.

YES: 5. NO: 0 ABSENT: 2. MOTION CARRIED.

Date:

APPROVED:

---

James E. Reagan, Chair

---

Susan Ullery, City Clerk

DOWNTOWN DEVELOPMENT AUTHORITY FUND  
FINANCIAL STATEMENT  
March 4, 2019

Beginning Balance:	\$273,118.62
Revenue:	
TIFA Revenue	\$524,559.35
Interest	1963.16
Total Revenues	\$799,641.13
Expenditures:	
Capital Outlay	\$1,180.00
Salaries	\$31,824.00
Maintenance Supplies	\$34,876.89
Utilities	\$11,608.92
Misc and Community Promotions	\$53,640.58
Accrued Wages	\$2,454.14
Administration	\$13,721.67
Accrued Payables	\$10,195.92
Transfer to General Fund	\$151,273.00
<i>Total Expenditures:</i>	\$310,775.12
Ending Balance	\$488,866.01



Check Date	Bank	Check #	Payee	Description	Account	Dept	Amount
Fund: 248 DOWNTOWN DEVELOPMENT AUTHORITY							
01/18/2019	GEN	72312	BERNARDS ACE HARDWARE	STATEMENT OF ACCOUNT	740.000	463	15.99
				STATEMENT OF ACCOUNT	740.000	463	126.87
				CHECK GEN 72312 TOTAL FOR FUND 248:			142.86
01/18/2019	GEN	72348	LOWELL LIGHT & POWER	ELECTRIC STATEMENTS	920.000	463	1,638.48
01/18/2019	GEN	72357	OLIN, SUZANNE	DDA LUNCH	880.000	740	25.40
01/18/2019	GEN	72369	VISA	ACCOUNT STATEMENT	930.000	463	336.27
02/14/2019	GEN	72440	LOWELL LIGHT & POWER	ELECTRIC STATEMENTS	920.000	463	828.44
03/01/2019	GEN	72472	CONCRETE CUTTING & BREAKING	DDA - CURB SAWING AT L&P	930.000	463	475.00
03/01/2019	GEN	72481	HANAH'S FLAG & BANNERS LLC	REPAIR FLAGS	930.000	463	33.00
03/01/2019	GEN	72494	LOWELL LIGHT & POWER	ELECTRIC STATEMENTS	920.000	463	571.55
03/01/2019	GEN	72512	WILLIAMS & WORKS INC.	ENGINEERING SERVCIES	801.000	450	1,180.00
				Total for fund 248 DOWNTOWN DEVELOPMENT AUTHORI			5,231.00

**LOWELL DOWNTOWN DEVELOPMENT AUTHORITY**  
**MEMORANDUM**



**DATE: March 6, 2019**

**TO: Downtown Development Authority Board of Directors**

**FROM: Michael T. Burns, City Manager MD**

**RE: Riverside Drive**

---

For the upcoming Fiscal Year 2020 budget, I requested an estimate from Williams & Works for reconstructing Riverside Drive from just south of the Backwater Café up to the north part of the Lowell Light and Power building. This consists of approximately 350 feet of road work which would include asphalt removal, curb replacement, sidewalk ramps, a new catch basin, new underdrains and manhole covers.

The City requested two separate options for construction. The first option is to remove and replace the asphalt. Cost for this would be estimated at \$90,000. The second option is to completely reconstruct the roadway and would cost \$107,000. While it is \$17,000 more, it might be best to have a full reconstruction for this section of road.

I would like the DDA Board to consider this project for next fiscal year. This would allow the project to go out for bid in June with the intent to begin construction early in the upcoming fiscal year.

# williams&works

engineers | surveyors | planners

January 29, 2019

Mr. Rich LaBombard, Assistant City Manager  
City of Lowell  
301 E. Main Street  
Lowell, MI 49331

RE: Riverside Street Reconstruction – Preliminary Opinion of Cost

Dear Mr. LaBombard:

At your request, we have prepared a preliminary opinion of cost for improving a portion of Riverside Street adjacent to the City parking lot and Riverside's intersection with N. Broadway Street (see attached graphic).

Based on our field meeting with you on January 11, 2018 we have developed the following list of assumptions in preparing this cost opinion.

- **Limits** – Starting on the south end, just south of the Backwater Café. Includes paving of Lowell Light & Power garage entrance.
- **Length** – 350 ft. (approx.)
- **Width** - Full width. Varies from approx.. 21 ft. to 52 ft.
- **Treatment** – Completely remove and replace existing asphalt, assuming base is OK. Otherwise, full reconstruction (new sand, gravel, 3.5 inches asphalt).
- **Curbs** – Remove all existing tall "E" curb on west side next to Light & Power, regrade and replace "F" curb. Also assumes 50% of remaining "F" curb to be replaced. Assumes Removal and replacement of gutter pan for north parking lot entrance.
- **Sidewalk Ramps** – 2 new ramps planned for along the west side.
- **Drainage** – Assumes placement of one new catch basin connecting to existing storm sewer to assist with drainage on the west side near LLP garage,
- **Underdrains** – Install new 6 inch underdrains. Both sides.
- **Manhole Covers** – Assume replace all utility covers

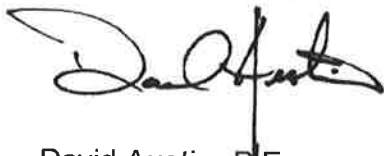
The estimated costs for the two alternatives are as follows. In order to determine the viability of the base materials, pavement cores and soil borings will need to be taken prior to design.

	<u>Remove &amp; Replace</u>	<u>Full Reconstruction</u>
<b>Construction</b>	\$ 69,000	\$ 82,000
<b>Contingencies @ 15%</b>	\$ 10,500	\$ 12,500
<b>Engineering @ 15%</b>	\$ 10,500	\$ 12,500
<b>Total Project Estimate</b>	<b>\$ 90,000</b>	<b>\$ 107,000</b>

A detailed copy of the cost opinion is attached. We are happy to meet with you to discuss this in more detail at your convenience.

Sincerely,

**Williams & Works**



David Austin, P.E.

attach:

cc: Mike Burns, City of Lowell

# LOWELL DOWNTOWN DEVELOPMENT AUTHORITY

## MEMORANDUM



**DATE: March 6, 2019**

**TO: Downtown Development Authority Board of Directors**

**FROM: Michael T. Burns, City Manager** 

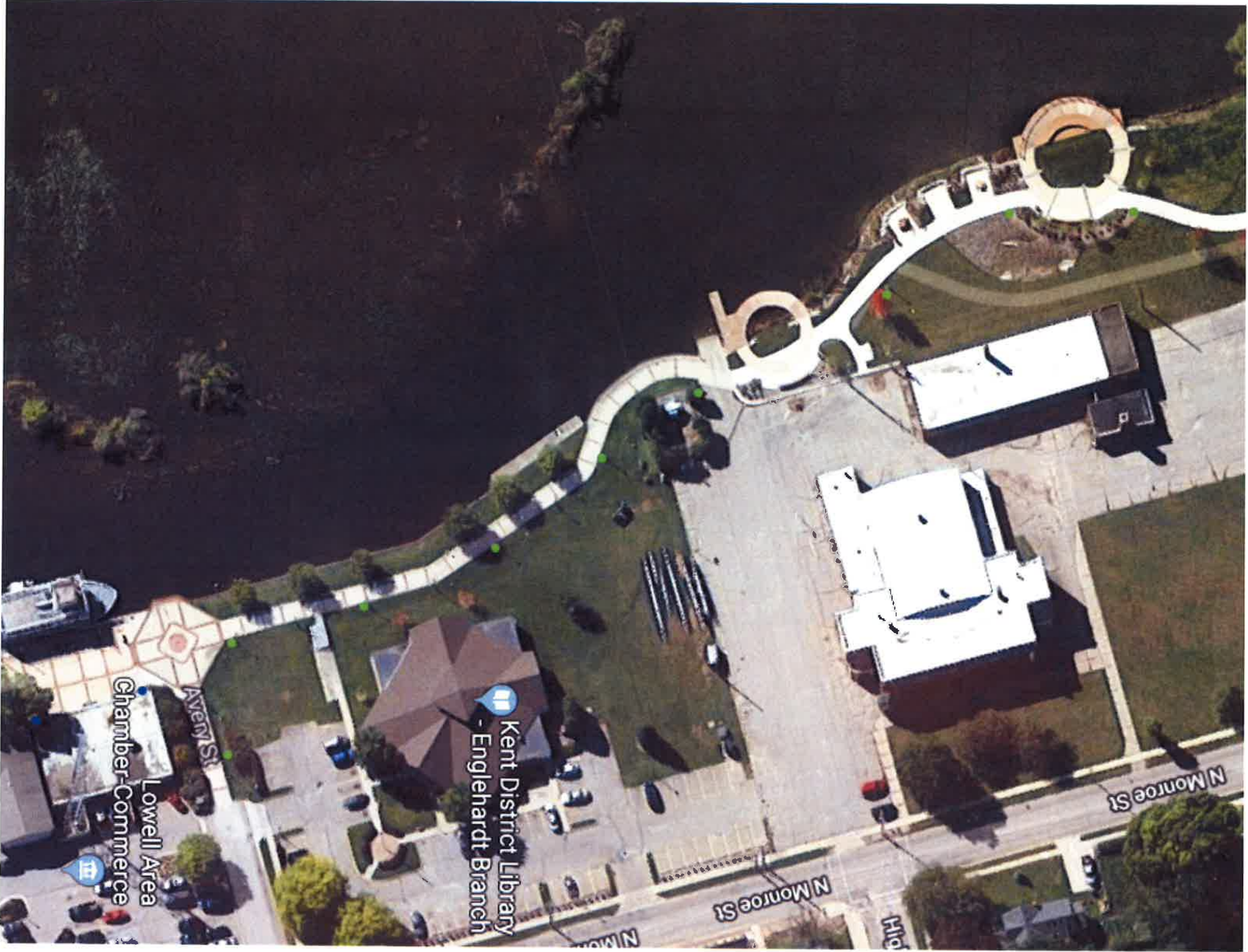
**RE: Riverwalk Sound System**

---

A request was received from the Lowell Area Chamber of Commerce to install a sound system for the Riverwalk area. This would allow the City to sound in music throughout the year. The music can be incorporated for Riverwalk, summer concert series and Christmas events. In addition, we could have music at the site at any time we wish if this were installed. It would be an enhancement to the area in addition to the Showboat improvements being planned.

The plan would be for the speakers to be placed at certain points throughout the park. We anticipate 700 feet of cable that would be buried in areas along the river walk. While this was not budgeted in the current fiscal year, we do not anticipate budgeting additional funds for sign replacement. We were able to repaint the "Welcome to Lowell" signs at a significantly lower cost than replacing them. This project must go out for competitive bid in accordance with the City's purchasing policy since this is an estimated cost of over \$10,000.

DDA Administration would like to know if the board is interested in this project. If interested, the City will go out for bid on it.



Kent District Library  
- Englehardt Branch

Lowell Area  
Chamber-Commerce





# CONTROL 88M

8" Two-Way Co-axial Mushroom Landscape Speaker

Professional Series

## Key Features:

- Components:
  - 8" highly weather-resistant driver
  - 1" soft-dome highly weather-resistant tweeter
- 120W Pink Noise Power Handling (240W program) in direct 8Ω setting, plus built-in 60W 70V/100V multi-tap transformer
- Tough polyethylene highly weather resistant enclosure
- Fully isolated center chamber for wiring protection
- High fidelity sound character with broad frequency range of 47Hz - 16kHz



## Applications:

The Control 88M Mushroom-Style Landscape Speaker is a two-way highly weather resistant speaker providing 360 degree coverage of the listening space. The extended bass capability and flat spectral response provides exceptionally high fidelity sound quality for music and music/speech program material. Designed to be mounted on or in the ground, the Control 88M can be used in a wide variety of applications including hotels, casinos, pool areas, shopping malls, theme parks, sports venues, resorts, restaurants, hospitality and leisure venues, entranceways, and anywhere a high quality music and/or paging speaker landscape speaker is required.

Its compact size allows the speaker to blend into landscaping and shrubbery, while its tough hunter green polyethylene enclosure resists abuse from lawn care equipment and the elements. The enclosure color extends throughout the material so the speaker will maintain color even when scraped or scratched.

The two part enclosure is designed to open with a twist for wiring and then close securely. The bottom base section of the enclosure can be pre-installed and then wired to the top speaker section of the enclosure. When assembled, the bottom base section becomes a fully isolated chamber, keeping the speaker and transformer (in the speaker section) highly isolated from the possibility of intruding moisture. Multiple locations on the bottom and sides are provided for the mounting of the exterior gland nut (installed by drilling a 22 mm (0.875 in, 7/8 in) diameter hole in the chosen location), and a second gland nut is positioned between the bottom base and the top speaker sections, to keep the speaker system highly weather tight. Included gland nuts maintain a water-tight seal

only when used with round-jacketed cable with outside diameter between 4.0 and 9.0 mm (0.16 and 0.35 inches).

All external hardware is stainless steel, and the powder-coated stainless steel grille resists rusting. The Control 88M can be secured to the ground via third-party ground stakes using the three attachment points that extend out from the bottom section of the speaker.

The 200 mm (8.0 in) diameter low-frequency driver features a Kapton former with 38 mm (1.5 in) voice coil for high power handling and superior long term reliability. The polypropylene cone and polyurethane surround provide high strength and superior moisture resistance. The 25 mm (1.0 in) high frequency driver utilizes a polyetherimide dome, providing high rigidity, strength, and high temperature resistance. The high slope crossover provides natural sonic character and SonicGuard™ protected HF driver ensures long-term reliability from occasional overdriving.

In addition, the speaker contains a high-quality 60 Watt multi-tap transformer for use on 70V or 100V distributed loudspeaker lines, and is switchable for 8 ohm voice-coil direct operation. The speaker handles 120 Watts Continuous Pink Noise (240W Program, 480W Peak) in the 8 ohm mode.

The Control 88M is UL certified, per UL1480.

# CONTROL 88M 8" Two-Way Co-axial Mushroom Landscape Speaker

## Specifications:

Frequency Response (-10 dB):	47 Hz - 16 kHz
Frequency Response ( $\pm 3$ dB):	60 Hz - 15 kHz
Power Rating <sup>1</sup> :	240 W Continuous Program (2 hrs) 120 W (480 W peak), Continuous Pink Noise (2 hrs) 100 W (400 W peak) Continuous Pink Noise (100 hrs)
Maximum Input Voltage:	28.0 V
Sensitivity <sup>2</sup> :	87 dB, 1 W @ 1 m (avc. 80 Hz - 16 kHz)
Nominal Coverage Angle:	360° horizontal, 160° vertical (primary listening 10° to 50° up from ground).
Directivity (Q):	2.1
Directivity Index (DI):	3.2 dB
Rated Maximum SPL <sup>3</sup> :	108 dB @ 1 m
Nominal Impedance:	8 $\Omega$ (at 8 $\Omega$ setting)
Minimum Impedance:	6.6 $\Omega$ at 9.5 kHz
Transformer Taps:	70V: 60W, 30W, 15W & 7.5W 100V: 60W, 30W, 15W
Insertion Loss:	<0.5 dB at any tap setting
Thru Setting:	8 $\Omega$ nominal
Crossover Type:	2 <sup>nd</sup> Order LPF on LF and 2 <sup>nd</sup> Order HPF on HF
Recommended Protective High-Pass:	45 Hz for 8 $\Omega$ operation, 24 dB/oct 80 Hz for 60W tap, 24 dB/oct 50 Hz for 30W, 7.5W, and 7.5W taps, 24 dB/oct
<b>Transducer:</b>	
Low Frequency Driver:	200 mm (8.00 in) diameter LF driver, Kapton <sup>™</sup> former, 38mm (1.5 in) voice coil, polypropylene cone and polyurethane surround.
High Frequency:	25mm (1.0 in) diameter HF driver Polyetherimide (PEI) dome.
<b>Physical:</b>	
Enclosure Material:	LDPE Polyethylene plastic, 6 mm wall thickness, UL94V-0 rated.
Grille:	Powder coated stainless steel.
Environmental:	IP-56 rating per IEC529 (dust protected and protected against strong jets of water). Exceeds MilSpec 810 for humidity, salt spray, temperature & UV. Passes Mil-STD-202F for salt spray. Enclosure UL94V0 rated.
Agency Ratings:	UL 1480 Speakers for Fire Alarm, Emergency, and Commercial and Professional Use, 5th Edition, for outdoor wet locations; UL 1480A Speakers for Commercial and Professional Use, 1st Edition; CSA C22.2 No. 205-12, Signal Equipment. Transformer UL Recognized per UL1876, ROHS compliant.
Terminals:	Bare wire with dielectric-gel-filled wire nuts (internal to top speaker section)
Wiring:	Water ingress protected by two stages of gland nuts, one mounted on outside of enclosure (installed by installer via drilling 22 mm (0.875 in, 7/8 in) hole in any of multiple provided locations) and one between the bottom base and top speaker sections. Included gland nuts require round-jacketed wire with outside diameter between 4.0 mm and 9.0 mm (0.16" in and 0.35" in). For Installation instructions, see Installation Guide (#IS-C80MLS).
Colors:	Hunter Green, RAL6018
Dimensions (H x W x D):	524 x 355 x 355 mm (20.7 x 14 x 14 in.)
Net Weight:	7.8 kg (17 lb)
Shipping Weight:	10.5 kg (23 lb)
Included Accessories:	(2) wire nuts, (2) gland nuts, (1) security screwdriver
Installer-Supplied Required Tools:	22mm (0.875 in, 7/8 in) twist-type drill bit (or other type suitable for plastic) for installing gland nut into enclosure.

<sup>1</sup> Continuous Pink Noise rating is IEC-shaped pink noise with a 6 dB crest factor. Continuous program power is defined as 3 dB above the Continuous Pink Noise Rating. In 8 ohm mode

<sup>2</sup> Half-space, 2m listening (in-ground recessed), 360° horizontal, vertical averaged 10 to 50 degrees from ground.

<sup>3</sup> 8 ohm mode, calculated from sensitivity and power handling, exclusive of power compression.

JBL continually engages in research related to product improvement. Some materials, production methods and design refinements are introduced into existing products without notice as a routine expression of that philosophy. For this reason, any current JBL product may differ in some respect from its published description, but will always equal or exceed the original design specifications unless otherwise stated.

## SPL Level Variation Chart by Layout Spacing

SPL Level Variation Within the Listening Space	Distance Apart
$\pm 1.5$ dB	4.0 meters (13 feet) apart
$\pm 3.0$ dB	6.5 meters (21 feet) apart
$\pm 4.5$ dB	9.0 meters (30 feet) apart

At listening height of 1.5 meters (5 feet)

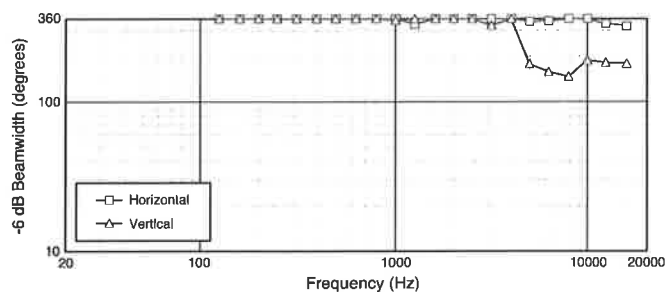




# ► **CONTROL 88M 8" Two-Way Co-axial Mushroom Landscape Speaker**

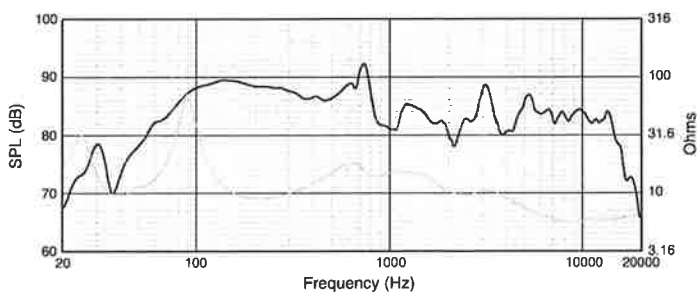
## **Beamwidth:**

-6 dB coverage by frequency

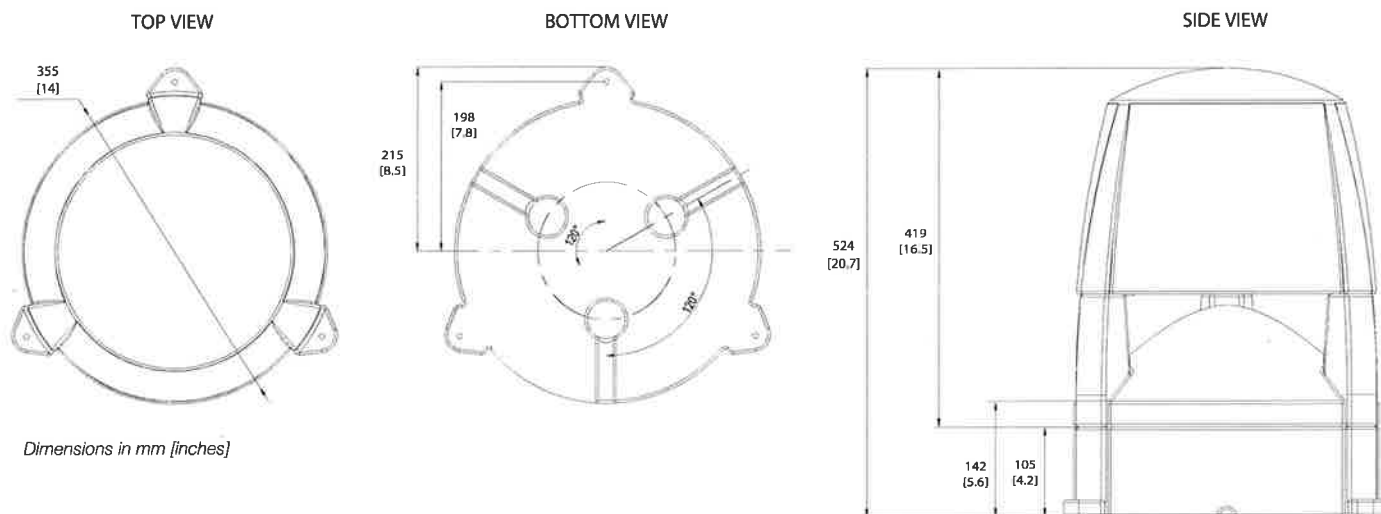


## **Frequency Response:**

In half-space ( $2\pi$ , in ground), plus impedance curve  
[Frequency response, Impedance graph]



## **Dimensions:**



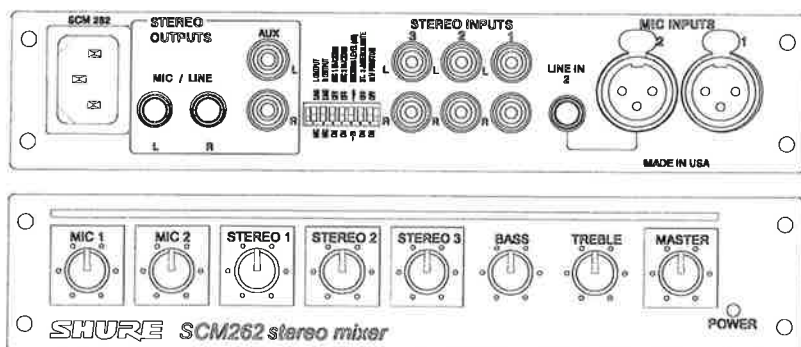
JBL Professional  
8500 Balboa Boulevard, P.O. Box 2200  
Northridge, California 91329 U.S.A.

© Copyright 2016 JBL Professional  
[www.jblpro.com](http://www.jblpro.com)

### SCM262 STEREO MIXER

The Shure Model SCM262 is a stereo mixer intended for sound reinforcement applications that integrate microphones with consumer stereo products. It incorporates two

active-balanced microphone inputs with three unbalanced stereo aux level inputs.



### SYSTEM FEATURES

The SCM262 Stereo Mixer is designed for restaurants, classrooms, corporate training, aerobics classes, and other situations where a paging/public announcement system is combined with background music or other program material.

- Designed to combine paging with background music.
- One active-balanced, XLR microphone input channel.
- One active-balanced XLR microphone and 1/4-in. TRS line input channel.
- Three STEREO INPUT channels

### SPECIFICATIONS

Measurement Conditions (unless otherwise specified): Tone controls centered; Line voltage 120 Vac, 60 Hz (SCM262) or 230 Vac, 50 Hz (SCM262E); full gain; 1 kHz, one channel activated; source impedances: Mic 150  $\Omega$ ; Line/Aux 40  $\Omega$ , terminations: Line/Mic/Aux 20 k $\Omega$ .

**Frequency Response** (Ref 1 kHz, channel and master controls centered)

MIC/LINE Inputs: 150 Hz to 20 kHz  $\pm 2$  dB

AUX Inputs: 20 Hz to 20 kHz  $\pm 2$  dB

**Low-Cut Filter (microphone inputs only)**

3dB down at 80 Hz, 6 dB/octave

**Voltage Gain (typical, controls full clockwise)**

Input	Output		
	Mic	Line	Aux
Low-impedance mic (150 $\Omega$ )	32 dB	72 dB	60 dB
Line	-9 dB	31 dB	19 dB
Stereo	-5 dB	35 dB	23 dB

Input	Impedance		Input Clipping Level
	Designed for use with	Actual (typical)	
Mic (XLR)	<600 $\Omega$	1.4 k $\Omega$	-16 dBV

- Stereo AUX level OUTPUTs
- Stereo MIC/LINE OUTPUTs
- BASS and TREBLE tone controls on the master output.
- 1/2-rack chassis.
- 12 V phantom power for condenser microphones.
- Internal power supply.
- Removable power cable.
- Ducking function (defeatable).
- Jukebox mute function (defeatable).

Line	<10 k $\Omega$	155 k $\Omega$	+24 dBV
Stereo	<2 k $\Omega$	21 k $\Omega$	>28 dBV

#### Outputs

Output	Impedance		Output Clipping Level
	Designed for use with	Actual (typical)	
Mic	> 600 $\Omega$	3 $\Omega$	-22 dBV
Line	>5k $\Omega$	300 $\Omega$	+18 dBV
Aux	$\geq 10$ k $\Omega$	1.5k $\Omega$	+5 dBV

#### Total Harmonic Distortion

<0.25% at +4 dBu output level, (through 22 Hz-22 kHz filter; MIC Input 1 and Master at center, all other controls full counterclockwise)

#### Hum and Noise

Equivalent Input Hum and Noise ..... -125 dBV  
..... (150  $\Omega$  source; 22 Hz - 22 kHz)

Output Hum and Noise  
(22 Hz to 22 kHz; channel controls full counterclockwise)  
... Master full counterclockwise ..... -85 dBV  
... Master full clockwise ..... -60 dBV

#### Common Mode Rejection

>70 dB at 1 kHz

#### Polarity

All inputs to all outputs are non-inverting.

For additional service or parts information, please contact Shure's Service department at 1-800-516-2525. Outside the United States, please contact your authorized Shure Service Center.



**CROWN**  
HARMAN

# CDi Series



## Features

- Accurate, uncolored sound with very low distortion for the best in music and voice reproduction
- Extremely versatile; rated for 2 $\Omega$ , 4 $\Omega$ , 8 $\Omega$  loads and 70Vrms/140Vrms outputs
- Advanced protection circuitry guards against: shorted outputs, open circuits, DC, mismatched loads, general overheating, high-frequency overloads and internal faults
- Intuitive front-panel LCD screen for quick, easy configuration
- Switch-mode universal power supply
- Onboard digital signal processing (DSP) includes crossovers, EQ filters, delay, and output limiting
- Up to 20 user-defined DSP presets are available

# CDi Series



CDi 1000, 2000, 4000



CDi 6000

## Power Matrix

Model	Channels	Dual (per ch.)				Bridge		
		2Ω	4Ω	8Ω	70Vrms	4Ω	8Ω	140Vrms
1000	2	700W*	500W	275W	500W	1400W*	1000W	1000W
2000	2	1000W*	800W	475W	800W	2000W*	1600W	1600W
4000	2	1600W*	1200W	650W	1000W	3200W*	2000W	2000W
6000	2	3000W*	2100W	1200W	2500W	6000W*	4200W	5000W

\*With 1% THD

Performance Specifications	1000	2000	4000	6000
Sensitivity (for full rated power at 4Ω)	1.3V	1.3V	1.3V	1.3V
Rated Power Output (per Channel at 4Ω)	500W Stereo	800W Stereo	1200W Stereo	2100W Stereo
Signal to Noise Ratio (below rated 1kHz power at 8Ω) (below rated 1kHz power at 8Ω; A weighted)	100dB	100dB	100dB	100dB
Total Harmonic Distortion (THD)	< .05%	< .05%	< .05%	< .05%
Damping Factor (20Hz to 400Hz)	> 500	> 500	> 500	> 500
Frequency Response (at 1W, 20Hz to 20kHz)	0dB, -1dB	0dB, -1dB	0dB, -1dB	0dB, -1dB
Crosstalk (below rated power) 20Hz to 1kHz	> 70dB	> 70dB	> 70dB	> 70dB
Input Impedance (nominal)	20kΩ balanced, 10kΩ unbalanced	20kΩ balanced, 10kΩ unbalanced	20kΩ balanced, 10kΩ unbalanced	20kΩ balanced, 10kΩ unbalanced

Physical Specifications				
Width	19 in. (48.3 cm)	19 in. (48.3 cm)	19 in. (48.3 cm)	19 in. (48.3 cm)
Height	3.5 in. (8.9 cm)	3.5 in. (8.9 cm)	3.5 in. (8.9 cm)	3.5 in. (8.9 cm)
Depth	12.5 in. (31.8 cm)	12.5 in. (31.8 cm)	12.5 in. (31.8 cm)	16.2 in. (41.1 cm)
Weight	22lbs (9.97kg)	22lbs (9.97kg)	22lbs (9.97kg)	30lbs (13.60kg)

Specifications subject to change without prior notice. Latest information available at [www.crownaudio.com](http://www.crownaudio.com). Crown offers a three-year, no-fault, fully transferable warranty for every new Crown amplifier – an unsurpassed industry standard. With this unprecedented no-fault protection, your new Crown amplifier is warranted to meet or exceed original specifications for the first three years of ownership. During this time, if your amplifier fails, or does not perform to original specifications, it will be repaired or replaced at our expense. In most cases, the only things not covered by this warranty are those losses normally covered by insurance and those caused by intentional abuse. Plus, the coverage is transferable, should you sell your amplifier. See your authorized Crown dealer for full warranty disclosure and details. For customers outside of the USA, please contact your authorized Crown distributors for warranty information or call 574-294-8200. © 2015 Crown Audio, Inc.





**CROWN**  
HARMAN

# CDi Series



## Features

- Accurate, uncolored sound with very low distortion for the best in music and voice reproduction
- Extremely versatile; rated for 2 $\Omega$ , 4 $\Omega$ , 8 $\Omega$  loads and 70Vrms/140Vrms outputs
- Advanced protection circuitry guards against: shorted outputs, open circuits, DC, mismatched loads, general overheating, high-frequency overloads and internal faults
- Intuitive front-panel LCD screen for quick, easy configuration
- Switch-mode universal power supply
- Onboard digital signal processing (DSP) includes crossovers, EQ filters, delay, and output limiting
- Up to 20 user-defined DSP presets are available

# CDi Series



CDi 1000, 2000, 4000



CDi 6000

## Power Matrix

Model	Channels	Dual (per ch.)				Bridge		
		2Ω	4Ω	8Ω	70Vrms	4Ω	8Ω	140Vrms
1000	2	700W*	500W	275W	500W	1400W*	1000W	1000W
2000	2	1000W*	800W	475W	800W	2000W*	1600W	1600W
4000	2	1600W*	1200W	650W	1000W	3200W*	2000W	2000W
6000	2	3000W*	2100W	1200W	2500W	6000W*	4200W	5000W

\*W in 1% THD

Performance Specifications	1000	2000	4000	6000
Sensitivity (for full rated power at 4Ω)	1.3V	1.3V	1.3V	1.3V
Rated Power Output (per Channel at 4Ω)	500W Stereo	800W Stereo	1200W Stereo	2100W Stereo
Signal to Noise Ratio (below rated 1kHz power at 8Ω) (below rated 1kHz power at 8Ω; A weighted)	100dB	100dB	100dB	100dB
Total Harmonic Distortion (THD)	< .05%	< .05%	< .05%	< .05%
Damping Factor (20Hz to 400Hz)	> 500	> 500	> 500	> 500
Frequency Response (at 1W, 20Hz to 20kHz)	± 0dB, -1dB	± 0dB, -1dB	± 0dB, -1dB	± 0dB, -1dB
Crosstalk (below rated power) 20Hz to 1kHz	> 70dB	> 70dB	> 70dB	> 70dB
Input Impedance (nominal)	20kΩ balanced, 10kΩ unbalanced	20kΩ balanced, 10kΩ unbalanced	20kΩ balanced, 10kΩ unbalanced	20kΩ balanced, 10kΩ unbalanced

## Physical Specifications

Width	19 in. (48.3 cm)	19 in. (48.3 cm)	19 in. (48.3 cm)	19 in. (48.3 cm)
Height	3.5 in. (8.9 cm)	3.5 in. (8.9 cm)	3.5 in. (8.9 cm)	3.5 in. (8.9 cm)
Depth	12.5 in. (31.8 cm)	12.5 in. (31.8 cm)	12.5 in. (31.8 cm)	16.2 in. (41.1 cm)
Weight	22lbs (9.97kg)	22lbs (9.97kg)	22lbs (9.97kg)	30lbs (13.60kg)

Specifications subject to change without prior notice. Latest information available at [www.crownaudio.com](http://www.crownaudio.com). Crown offers a three-year, no-fault, fully transferable warranty for every new Crown amplifier – an unsurpassed industry standard. With this unprecedented no-fault protection, your new Crown amplifier is warranted to meet or exceed original specifications for the first three years of ownership. During this time, if your amplifier fails, or does not perform to original specifications, it will be repaired or replaced at our expense. In most cases, the only things not covered by this warranty are those losses normally covered by insurance and those caused by intentional abuse. Plus, the coverage is transferable, should you sell your amplifier. See your authorized Crown dealer for full warranty disclosure and details. For customers outside of the USA, please contact your authorized Crown distributors for warranty information or call 574-294-8200. © 2015 Crown Audio<sup>®</sup>, Inc.

## QLX-D™ Digital Wireless Specifications (Model: All specifications are subject to change.)

System	<b>RF Carrier Frequency Range</b> <b>Image Rejection</b> <b>Latency</b> <b>RF Sensitivity</b> <b>Working Range</b> <b>Audio Frequency Range</b> <b>Audio Dynamic Range</b> (System Gain @ +10) <b>Total Harmonic Distortion</b> <b>Operating Temperature Range</b>	470–937.5 MHz, varies by region >70 dB, typical <2.9 ms -97 dBm at 10 <sup>-5</sup> BER 100 m (328 ft.) line-of-sight. <i>Note: Actual range depends on RF signal absorption, reflection and interference.</i> 20 Hz to 20 kHz. <i>Note: Dependent on microphone type.</i> >120 dB, A-weighted, typical <0.1% (-12 dBFS input, System Gain @ +10) -18°C (0°F) to 50°C (122°F) <i>Note: Battery characteristics may limit this range.</i>
QLXD4 Receiver	<b>Dimensions</b> <b>Weight</b> <b>Housing</b> <b>Power Requirements</b> <b>Spurious Rejection</b> <b>Antenna Connector Type</b> <b>Antenna Impedance</b> <b>Gain Adjustment Range</b> <b>Configuration</b> <b>Antenna Impedance</b> <b>Full Scale Output</b> <b>Mic/Line Switch</b> <b>Network Interface</b> <b>Network Addressing Capability</b>	41 mm x 197 mm x 151 mm (1.63 in. x 7.75 in. x 5.94 in.) 777 g (1.71 lbs.), without antennas Steel 12 V DC @ 0.4 A, supplied by external power supply (lin positive) > 80 dB, typical BNC 50 Ω -18 to +42 dB (in 1 dB steps) ¼" (6.35 mm): Impedance balanced (Tip = audio, Ring = no audio, Sleeve = ground) XLR: balanced (1 = ground, 2 = audio +, 3 = audio -) ¼" (6.35 mm): 100 Ω (50 Ω Unbalanced) XLR: 100 Ω ¼" (6.35 mm): +12 dBV XLR: LINE setting = +18 dBV, MIC setting = -12 dBV 30 dB pad Single Port Ethernet 10/100 Mbps DHCP or Manual IP address
QLXD1 Bodypack Transmitter QLXD2 Handheld Transmitter	<b>Dimensions</b> <b>Weight</b> <b>Housing</b> <b>Battery Type</b> <b>Battery Runtime</b> <b>RF Output Power</b> <b>Occupied Bandwidth</b> <b>Modulation Type</b> <b>Mic Offset Range</b>	QLXD1: 86 mm x 65 mm x 23 mm (3.38 in. x 2.57 in. x 0.92 in.) without antenna QLXD2: 256 mm x 51 mm (10.1 in. x 2.0 in.) L x Dia. QLXD1: 138 g (4.9 oz.), without batteries QLXD2: 347 g (12.2 oz.), without batteries QLXD1: Cast aluminum QLXD2: Machined aluminum Shure SB900 Rechargeable Li-Ion or AA batteries 1.5 V (@ 10 mW) Shure SB900 rechargeable: up to 10 hours alkaline: up to 9 hours 1 mW or 10 mW < 200 kHz Shure proprietary digital 0 to 21 dB (in 3 dB steps)

**SHURE**  
LEGENDARY  
PERFORMANCE™

United States, Canada,  
Latin America, Caribbean:  
Shure Incorporated  
5800 West Touhy Avenue  
Niles, IL 60714-4608 USA

Phone: +1 847-600-2000  
Fax: +1 847-600-1212 (USA)  
Fax: +1 847-600-6446  
Email: info@shure.com  
www.shure.com

Europe, Middle East, Africa:  
Shure Europe GmbH  
Jakob-Diefenbacher-Str. 12,  
75031 Eppingen, Germany

Phone: +49-7262-92490  
Fax: +49-7262-9249114  
Email: info@shure.de  
www.shure.eu

Asia, Pacific:  
Shure Asia Limited  
22/F, 625 King's Road  
North Point, Island East  
Hong Kong

Phone: +852-2893-4290  
Fax: +852-2893-4055  
Email: info@shure.com.hk  
www.shureasia.com

www.shure.com

©2014 Shure Incorporated

AL25255 5K

05/14



QLX-D™ Digital Wireless Systems

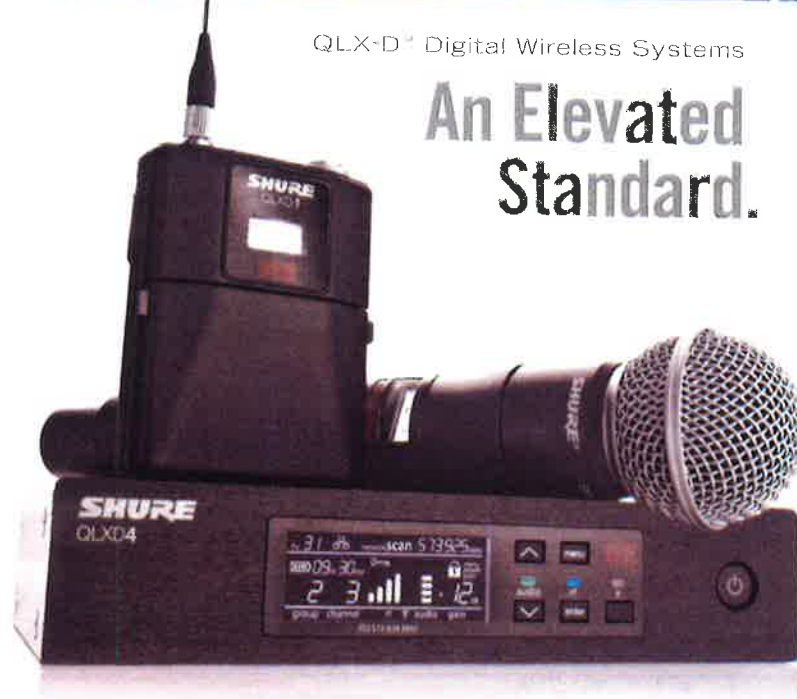
# POWERFULLY REFINED WIRELESS





QLX-D<sup>®</sup> Digital Wireless Systems

**An Elevated Standard.**



**Transparent 24-bit digital audio.**  
**Incredibly efficient wireless.**  
**Powerful networking.**  
**Rugged, secure systems.**

Shure QLX-D<sup>®</sup> Digital Wireless is the clear choice for exceptionally detailed wireless audio in widely diverse and demanding environments. A highly flexible system featuring streamlined setup and operation, QLX-D boasts impressive RF efficiency to gain more channels on air using less spectrum, while the rugged all-metal construction withstands the rigors of constant use. From corporate seminars to music clubs, classroom lectures to houses of worship, Shure QLX-D Digital Wireless has it covered — delivering confident performance, no matter what the venue.

## System Components



### QLXD1 Bodypack Transmitter QLXD2 Handheld Transmitter

- Rugged metal construction
- Backlit LCD with easy-to-navigate menu and controls
- 2 x AA batteries provide up to 9 hours of runtime
- Optional Shure SB900 lithium-ion rechargeable battery provides up to 10 hours of runtime
- External charging contacts for docked charging
- Multiple microphone cartridges available, including the legendary SM58<sup>®</sup> (QLXD2)

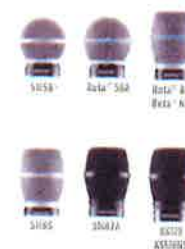
### QLXD4 Receiver

- Transparent, 24-bit digital audio
- 20 Hz - 20 kHz frequency range\*
- 120 dB dynamic range
- 64/12 MHz overall tuning bandwidth\*\*
- 17 compatible channels per 5 MHz TV channel
- More than 60 pre-set compatible channels per frequency band\*\*
- AES 256-bit encryption
- Ethernet networkable receivers
- Network Scan finds clean frequencies for networked receivers
- AMX/Crossbar control system ready
- ShurePlus<sup>®</sup> Channels mobile app compatible
- Wireless Workbench<sup>®</sup> control software compatible

## Systems available with:

### Handheld

Interchangeable SM<sup>®</sup> 58, and K58 microphone cartridges



### Lavalier

Miniature and boundary-type lavalier condenser microphones



### Headset

Comfortable over-the-ear design



### Instrument

Microphone and cable designed for instrument and line input



DICKINSON WRIGHT

Public Act 57 of 2018:

THE REPEAL AND RECODIFICATION OF MULTIPLE  
ACTS RELATED TO TAX INCREMENT FINANCE  
AUTHORITIES

---

---


---

---

---

---

---



[www.dickinsonwright.com](http://www.dickinsonwright.com)

DICKINSON WRIGHT

---

---

---

---

---

---

---

What the new legislation does:

- Repeals and recodifies multiple acts related to TIFAs (tax increment finance authorities).
- Subjects the TIFAs to standard reporting requirements.
- Provides for the continuation of existing TIFAs.
- Takes effect January 1, 2019.

[www.dickinsonwright.com](http://www.dickinsonwright.com)

DICKINSON WRIGHT

---

---

---

---

---

---

---

### Acts recodified

- Downtown Development Authority Act (1975 PA 197)
- Tax Increment Authority Act (1980 PA 450)
- Local Development Financing Authority (1986 PA 281)
- Nonprofit Street Railway Act (1867 PA 35)(only partially a TIFA, within zones)
- Corridor Improvement Authority Act (2005 PA 280)
- Water Resource Improvement Tax Increment Finance Authority Act (2008 PA 94)
- Neighborhood Improvement Authority Act (2007 PA 61)

www.dickinsonwright.com

DICKINSON WRIGHT

### Acts repealed

- Historical Neighborhood Tax Increment Finance Authority Act (2004 PA 530)
- Private Investment Infrastructure Funding Act (2010 PA 250)

www.dickinsonwright.com

DICKINSON WRIGHT

### General Reporting Requirements for 6 of the Recodified Acts

-TIFAs must create a website or use existing municipal website (regularly maintained with access to records and documents for the fiscal year) including:

- Minutes.
- Annual budget and audits.
- Current development plan if not included in TIF plan.
- Current TIF plan if capturing revenues.
- Staff contact information.
- List of current contracts and description of contracts and other documents related to authority management and services provided to the TIFA.

www.dickinsonwright.com

DICKINSON WRIGHT

### General reporting requirements continued...

- Information regarding TIF revenues described in annual audit that are not spent within 5 years and reasons for accumulating funds, uses for which they will be spent, a time frame for spending the funds, and the amount of and explanation for any funds that have not been spent within ten years of receipt.
- List of TIFA accomplishments including progress on development plan and TIF plan goals and objects for the immediately preceding fiscal year.
- List of TIFA projects and investments including active and completed projects for immediately preceding fiscal year.
- List of TIFA events and promotional campaigns for the immediately preceding fiscal year.

www.dickinsonwright.com

DICKINSON WRIGHT

### General reporting requirements continued...

- Records and documents phased in. Act requires that 5 years of information be disclosed, subject to phase in. Within 180 days of the end of the TIFA's fiscal year, its website must contain one year of information (the immediately preceding year). Then annually thereafter information shall be updated up to 5 years.
- If no existing website, records must be maintained at a physical, public location within municipality.

www.dickinsonwright.com

DICKINSON WRIGHT

### Financial Reporting Requirements

- The Department of Treasury ("DOT") is required to create a form for TIFAs to use to report the status of TIF accounts.
- DOT shall consult with professional organizations representing municipalities in developing reporting form.
- Information required by reporting form includes:
  - Name of the TIFA.
  - Date the TIFA was formed.
  - Date the TIF plan is set to expire or terminate including whether it expired during immediately preceding fiscal year.
  - Date the TIFA began capturing TIF revenues.
  - Current base year taxable value of the TIF District.
  - Unencumbered fund balance for the immediately preceding fiscal year.
  - Encumbered fund balance for the immediately preceding fiscal year.

www.dickinsonwright.com

DICKINSON WRIGHT

## Financial Reporting Requirements continued...

- Amount and source of revenue in the account, including the amount from each taxing jurisdiction.
- Amount in any bond reserve account.
- Amount and purpose of expenditures from the account.
- Amount of principal and interest on any outstanding bonded indebtedness.
- Initial assessed value of the development area or TIFA district by property tax classification.
- Captured assessed value retained by the TIFA by property tax classification.
- Tax increment revenues received for the immediately preceding fiscal year.
- Whether the TIFA amended its development plan or its TIF plan within the immediately preceding fiscal year and if so, a link to the current development plan or TIF plan as amended.
- Any additional information the governing body of the municipality or DOT considers necessary.

www.dickinsonwright.com

DICKINSON WRIGHT

## Financial reporting requirements continued...

- Form submitted annually by the TIFAs to the governing bodies of the municipalities, governing body of any taxing unit levying taxes subject to capture by the TIFA, and to DOT, at same time that annual financial report is required under the Uniform Budgeting and Accounting Act.
- DOT is required to collect reports and compile combined reports summarizing information and submit copies to each member of legislature.
- Within 90 days of Act's effective date each TIFA required to send DOT copy of or link to currently adopted development plan or TIF plan if separate from development plan.

www.dickinsonwright.com

DICKINSON WRIGHT

## Penalties for Noncompliance

### of General and Financial Reporting Requirements

- DOT could institute proceedings to compel enforcement.
- DOT would send written notification to each TIFA in noncompliance; each taxing jurisdiction subject to capture, and the governing body of the establishing municipality.
- TIFA has 60 days to comply.
- Failure to comply would result in inability to capture beyond bonded indebtedness and other obligations for the period of noncompliance.
- During noncompliance period TIFA could not amend or approve TIF plan.
- If noncompliance period exceeds 2 consecutive years, TIFA could not capture the amount needed for bond debt without resolution from establishing municipality and each taxing jurisdiction subject to capture.
- Excess funds captured would be returned to taxing jurisdictions per statute.

www.dickinsonwright.com

DICKINSON WRIGHT

### Informational Meetings Requirements

- TIFA must hold at least 2 informational meetings each year.
- Notice must be given on website at least 14 days in advance.
- At least 14 days in advance, TIFA must mail notice to governing body of each taxing jurisdiction subject to capture OR TIFA could notify the Clerk of other taxing jurisdictions by email.
- Informational meeting may be held in conjunction with other public meetings of the TIFA or municipality.

[www.dickinsonwright.com](http://www.dickinsonwright.com)

DICKINSON WRIGHT

---

---

---

---

---

---

---

### Continuation of Existing Authorities

- For all practical purposes, the boards, financial arrangements, bonds, notes and other obligations, contractual rights and duties, and development and TIF plans continue despite repeal.
- Members continue terms.

[www.dickinsonwright.com](http://www.dickinsonwright.com)

DICKINSON WRIGHT

---

---

---

---

---

---

---

DICKINSON WRIGHT  
P.C.

For more information please contact:

Dick Wright or Jessica Wood | Dickinson Wright PLLC | 200 Ottawa Avenue, N.W., Suite 1000  
Grand Rapids, Michigan 49503 | (616) 458-1300

---

---

---

---

---

---

---